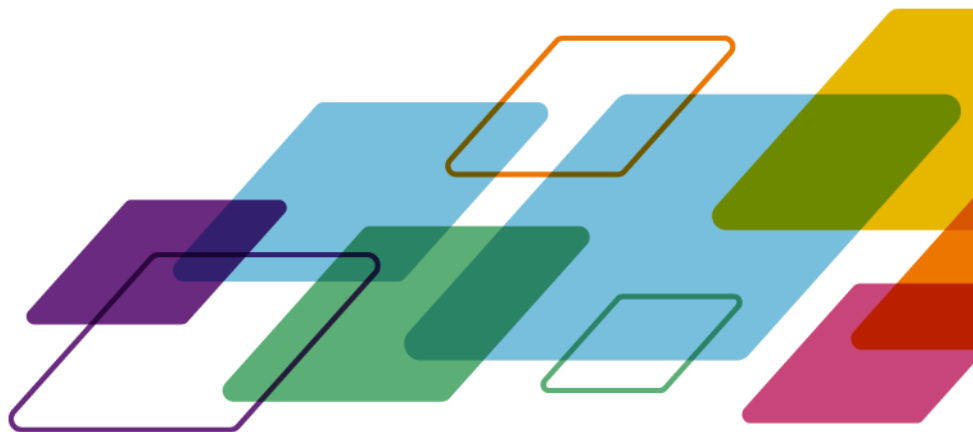




Fiery FS600 Pro and Fiery FS600

What's new product guide for
Fiery servers driving cutsheet
printers





CONTENTS

Introduction	4
New features by innovation and foundational areas	5
Color & Imaging	6
Adobe PDF Print Engine 6.0	6
Color management automation	6
1-step color management	6
Zero-touch recalibration	8
Fiery TrueBrand for all cutsheet servers	8
Fiery Edge spot color processing.....	9
Fiery Spot Pro enhancements	10
Configurable Fiery Edge spot color processing	10
Enable/disable spot color groups	12
Show measured Delta E on swatch books	13
Fiery ImageViewer enhancements	14
Preserve spot colors with Fiery ImageViewer curves	14
Show imageable area	15
Ruler guidelines.....	15
Usability improvements	16
PrintWide 2020 source profile support	16
Cutback trapping	17
Enhanced support for inline measurement instruments	17
Dynamic patch layout support	17
Improved measurement accuracy	18
Specialty color enhancements	18
Overprint control of specialty colors	18
Subset profiling	19
Productivity.....	20
Intelligent HyperRIP	20
Submit jobs to Fiery JobFlow through Fiery Command WorkStation.....	22
Fiery JobExpert enhancements	23
PostScript support.....	24
Find Record Length.....	24
Selective settings presets	25
Management.....	27
Fiery Print Scheduler.....	27
Job Groups.....	28
Media Catalog.....	30
Size Catalog	30
Global Paper/Media Catalog edits	32





Visual image shift.....	33
Fiery Preflight for black-and-white external servers	35
Fiery Command WorkStation enhancements	36
Easy job cancellation.....	36
Visible server IP address	36
Faster job title editing	37
Expanded output profile names	37
Customizable server list.....	37
Paper/Media Catalog Favorites	38
Print time remaining.....	38
Performance preference for makeready multitasking	39
Connection.....	40
Microsoft Windows 10 IoT Enterprise LTSC 2021	40
Debian 11 Linux.....	40
Support for IPP 2.0	41
Compliance with Mopria Print Service	41
Native support for Universal Print by Microsoft	42
Fiery IQ cloud services integration	43
Secure	44
FIPS 140-2 compliant data encryption	44
Secure Erase (NIST 800-88 compliant)	44
Login with SSO (Single Sign-On)	45
Fiery High Security Kit v1.0	45
Modified/removed functions.....	46
Fiery Learning	48
Free learning resources	48
Fiery certification programs.....	48
Fiery Communities	50
Additional resources	51





Introduction

The new Fiery® FS600 Pro/FS600 system delivers innovative, intelligent technology to meet the evolving demands of production print environments and provides options to scale for future growth. New features in the latest release deliver the following customer benefits:

- Fiery HyperRIP mode selection is now automated for greater efficiency.
- More user-friendly and directly accessible automation streamlines the process of media color management, and improves spot color accuracy.
- Ensures compliance with organizational security protocols and delivers important functionality for enterprise customers.
- More operator control of job print order, faster application of specific properties to multiple jobs, and more efficient media management.

Fiery FS600 is available for embedded Linux-based servers, and Fiery FS600 Pro for external Windows-based servers. The term Fiery FS600 Pro is also used as a general reference to the software at a system level.

Fiery DFEs are built on a strong foundation focused on security, reliability, scalability, connection, and user-centric operation. New features in Fiery FS600 Pro servers make the Fiery foundational areas even more robust, providing more day-to-day reliability and security for your operation. This product guide is structured to present new features by innovation area as well as these foundational aspects.

This guide includes a key like this one at the end of each feature section that indicates the availability of that feature.

Availability	Definition
Cutsheet external servers	Windows-based servers driving cutsheet printers
Cutsheet embedded servers	Linux-based servers driving cutsheet printers
Standard	Available by default
Optional	Requires an optional software package to enable
N/A	Not available
Check Fiery server materials to confirm support	Available on a product-specific basis
Server	Feature is part of FS600 Pro/FS600 software for external or embedded servers. Not available with earlier Fiery software versions.
Client	Feature available as part of Fiery Command WorkStation® 6.8.



New features by innovation and foundational areas

 Color & imaging	 Productivity	 Management	 Connection
<ul style="list-style-type: none"> • Adobe PDF Print Engine 6.0 • Color management automation • Fiery TrueBrand for all cutsheet servers • Fiery Edge spot color processing • Fiery Spot Pro enhancements • Fiery ImageViewer enhancements • Cutback trapping • PrintWide 2020 source profile support • Enhanced support for inline measurement instruments • Specialty color enhancements 	<ul style="list-style-type: none"> • Intelligent HyperRIP** • Submit jobs to Fiery JobFlow® via Fiery Command WorkStation** • Fiery JobExpert improvements • Selective settings presets 	<ul style="list-style-type: none"> • Fiery Print Scheduler • Job Groups • Media Catalog • Visual image shift • Global Paper/Media Catalog entry edits • Fiery Preflight for black and white external servers** • Fiery Command WorkStation enhancements 	<ul style="list-style-type: none"> • Microsoft® Windows 10 IoT Enterprise LTSC 2021** • Debian 11 Linux* • Support for IPP 2.0 • Compliance with Mopria® Print Service • Native support for Universal Print by Microsoft • Fiery IQ® cloud services integration
<div>  Secure </div> <ul style="list-style-type: none"> • FIPS 140-2 compliant data encryption** • Secure Erase (NIST 800-88 compliant) ** • Login with Single Sign-on (SSO)** • Fiery High Security Kit v1.0** • Support for IPP 2.0 • Compliance with Mopria® Print Service 			

* Only available on Fiery embedded Linux-based servers

** Only available on Fiery external Windows-based servers

[Blue - indicates features available as part of Fiery Command WorkStation 6.8](#)

Note: Features may vary by print engine model. Please refer to the individual product datasheet or feature matrix to find out exactly which features are available.



Color & Imaging

Adobe PDF Print Engine 6.0

Adobe's PDF-based RIP, Adobe PDF Print Engine, enables direct PDF RIPping without conversion to PostScript, avoiding potential errors for PDF files that contain transparencies.



Adobe PDF Print Engine

This support offers users a native end-to-end PDF workflow and helps them improve the consistency and flexibility of the printed output from design to print.

Fiery FS600 Pro servers include Adobe PDF Print Engine 6.0, which includes support for PDF/X-6 and PDF/VT-3 files.



[Visit the webpage](#)

Benefits:

- High-quality output that matches the on-screen appearance of the document.
- Minimizes the use of system resources, making the printing process fast and efficient.

Availability:

Cutsheet external servers	Standard
Cutsheet embedded servers	Optional – requires Fiery JobExpert and PDF Processing Kit
Server or client feature	Server

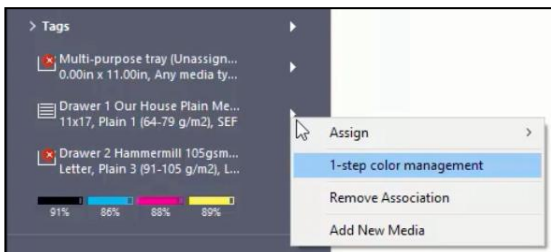
Color management automation

Fiery color management automation is a combination of two features that work in harmony to effortlessly achieve great color for users of all experience levels. Media can be calibrated and profiled in just a single step; then fully-automated, hands-off recalibration keeps color consistent for users of inline measurement instruments – all within Fiery Command WorkStation.

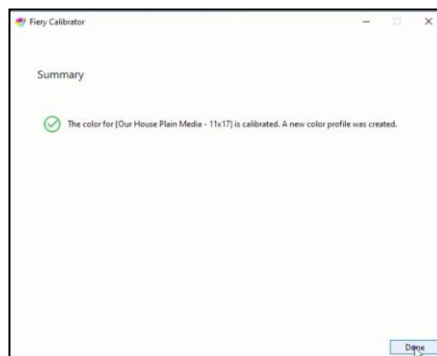
1-step color management

This revolutionary media color management feature combines calibration and media profile creation into one single action. A right-click from the chosen media tray guides users through the short wizard-driven color management process. New media is now ready for production in just 4 clicks. The operator doesn't have to make any decisions to create a high-quality custom calibration and profile.

Once a media is "known" to Fiery Command WorkStation, the process of maintaining great results is even faster, with only a recalibration needed when initiating 1-step color management.



1-step color management initiated for the media tray



A new calibration and media profile completed in 3 clicks

This feature works with both handheld and inline measurement instruments, though inline instruments provide the highest level of automation.

Benefits:

- Automates and streamlines the process of media color management.
- Reduces the time it takes to create a calibration and profile by over 60% compared to previous methods.
- Easily delivers the best possible gamut and quality for all media.
- Requires no color management expertise to get excellent results.
- No need to step out of the Fiery Command WorkStation workspace to get media ready for production.
- Includes the option to fully automate G7 Grayscale calibration.

Availability:

Cutsheet external servers	Requires a handheld or inline measurement instrument Check Fiery server materials to confirm support Requires a Fiery Color Profiler Suite license
Cutsheet embedded servers	Requires a handheld or inline measurement instrument Check Fiery server materials to confirm support Requires a Fiery Color Profiler Suite license
Server or client feature	Server



Zero-touch recalibration

Zero-touch compliments the 1-step color management feature to deliver scheduled, fully automated, unattended recalibration.

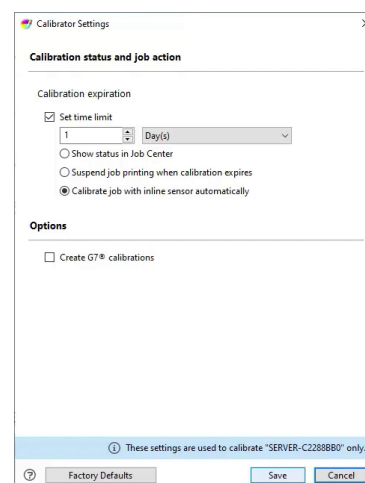
For use with inline measurement instruments, it lets users schedule recalibration at any interval that suits their print environment, per media type. Because this feature takes advantage of inline measurement instruments, operators don't need to intervene to get color back to the defined state established by 1-step color management. So, it delivers a fully "hands-off" media color calibration solution.

Benefits:

- Fully automatic and hands-free recalibration with no need for operator intervention to keep color results on track.
- Guaranteed accurate and consistent results automatically with no need for operators to remember to perform recalibration routines.
- No need to manually halt production to take care of media recalibration.

Availability:

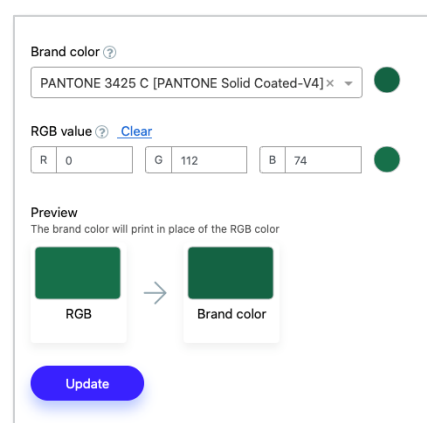
Cutsheet external servers	Check Fiery server materials to confirm support
Cutsheet embedded servers	Check Fiery server materials to confirm support
Server or client feature	Server



Fiery TrueBrand for all cutsheet servers

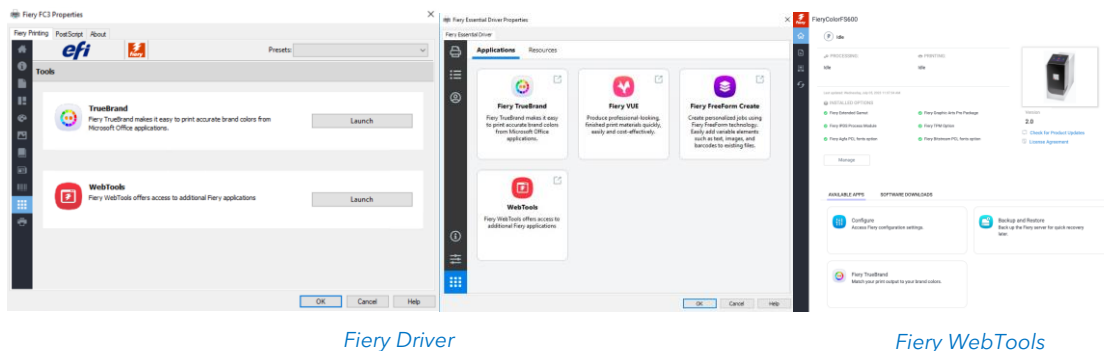
One of the most common print challenges is getting documents created in Microsoft Office applications, which only support RGB colors and do not support spot colors, to print with accurate brand colors.

With Fiery TrueBrand™, now available for all cutsheet Fiery servers, it's easy for anyone to map RGB values to named spot colors. The Fiery TrueBrand application walks users through the steps to first select the desired named color, and then the corresponding RGB values. And, once these values are set on the Fiery server, the RGB combination used in RGB-only applications will automatically map to the desired named color for future prints. Users are just a few clicks away from producing presentations, brochures, and other Microsoft Office documents with accurate brand colors.



Mapping brand colors to RGB values in the Fiery TrueBrand application

The Fiery TrueBrand application is accessible in multiple ways:



Fiery Driver

Fiery WebTools



[Watch the video](#)

Benefits:

- Easy way to produce documents with accurate brand colors
- No specialized color knowledge required.
- Suitable for all print environments.

Availability:

Cutsheet external servers	Standard
Cutsheet embedded servers	Standard
Server or client feature	Server

Fiery Edge spot color processing

Fiery Edge spot color processing is a new spot color technology, available by default on all Fiery FS600 Pro servers.

- It can produce up to 20% dE 2000 improvement in spot colors near or outside of the gamut for CMYK printers.
- CMYK+ printers can achieve up to a 40% improvement in dE values for spot colors near or outside of the gamut.

Users may also see a dE improvement for in-gamut spot colors for both CMYK and CMYK+ printers, though visual changes may be small.

Examples (see improvement in dE values below):

PANTONE Orange 021



13.35 dE

Standard Fiery spot color processing

8.36 dE

New Fiery Edge spot color processing

PANTONE 812



13.79 dE

Standard Fiery spot color processing

10.31 dE

New Fiery Edge spot color processing

PANTONE 251



3.53 dE

Standard Fiery spot color processing

2.22 dE

New Fiery Edge spot color processing

Benefit:

- Improved spot color accuracy, especially for out-of-gamut colors

Fiery Spot Pro enhancements

The following features are available with Fiery Spot Pro, part of the [Fiery Graphic Arts Pro Package](#) for cutsheet external servers, and the [Fiery ColorRight Package](#) for cutsheet embedded servers.

- Configurable Fiery Edge spot color processing
- Enable/disable spot color groups
- Show measured Delta E on swatch books

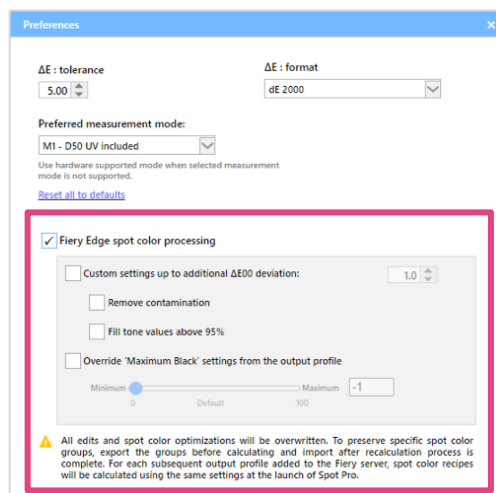
Configurable Fiery Edge spot color processing

Users with Fiery Spot Pro can take advantage of configurable options in Fiery Edge spot color processing to:

- Achieve a cleaner color appearance.
- Reduce the amount of ink/toner used in spot color recipes.
- Disable Fiery Edge spot color processing technology.

Cleaner color appearance

In Fiery Spot Pro, operators can configure available Fiery Edge spot color processing options to produce a cleaner color appearance. They can do this by either removing a color from a spot color recipe that contains a very low value (*Remove contaminations*), which is most noticeable in light colors. Or, they can use 100% of a color in a spot color recipe when it is already 95% or higher (*Fill tone values above 95%*), which avoids white stippling in dark or saturated colors.





Examples (note the changed C, M, Y, K values below in bold):

PANTONE Yellow C

Standard Fiery spot color processing
Recipe: C 0.00, M 3.93, Y 100.00, K 0.00

New Fiery Edge spot color processing
Recipe: C 0.00, **M 0.00**, Y 100.00 K 0.00

PANTONE Strong Red C

Standard Fiery spot color processing
Recipe: C 0.01, M 100.00, Y 46.87, K 3.87

New Fiery Edge spot color processing
Recipe: **C 0.00**, M 100.00, Y 46.87, **K 0.00**

Reduce the number of inks/toners used in spot color recipes

Fiery Edge spot color processing can reduce the number of inks/toners used. By limiting spot color recipes to 3 colors plus black, it can deliver potential cost savings. And, for CMYK+ printers, it can produce more stable spot colors by preventing any inconsistency in how a press lays down 6 or more colors in a single area, which can also help prevent metamerism effects.

In Fiery Spot Pro, operators can choose *Override maximum black settings from the output profile* to control how much non-black ink/toner will be used in gray spot color recipes. This is similar to the existing *Print CMYK gray using black only*, available in Job Properties. However, this feature applies only to spot colors and allows additional control in the composition of the gray value beyond what is defined in the output profile.

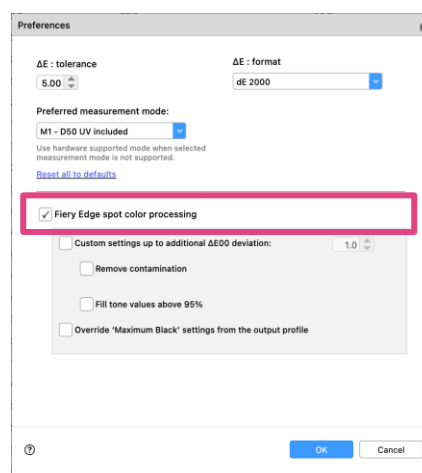
Option to disable Fiery Edge spot color processing

Some operators may need to use the traditional Fiery spot color processing instead of Fiery Edge spot color processing. In this case, they can disable Fiery Edge spot color processing technology by unchecking the box in Fiery Spot Pro.

① However, this will remove any existing spot color edits on the Fiery server and will be used for all subsequent jobs.

We strongly recommend backing up spot color groups in the .icc file format before disabling Fiery Edge spot color processing.

Operators can choose to switch back to Fiery Edge spot color processing technology at any time.



Unchecking this box in Spot Pro preferences disables Fiery Edge spot color processing.



Benefits:

- Reduce the number of inks/toners used in CMYK+ spot color recipes, which can potentially result in ink/toner savings
- Achieve a cleaner color appearance

Enable/disable spot color groups

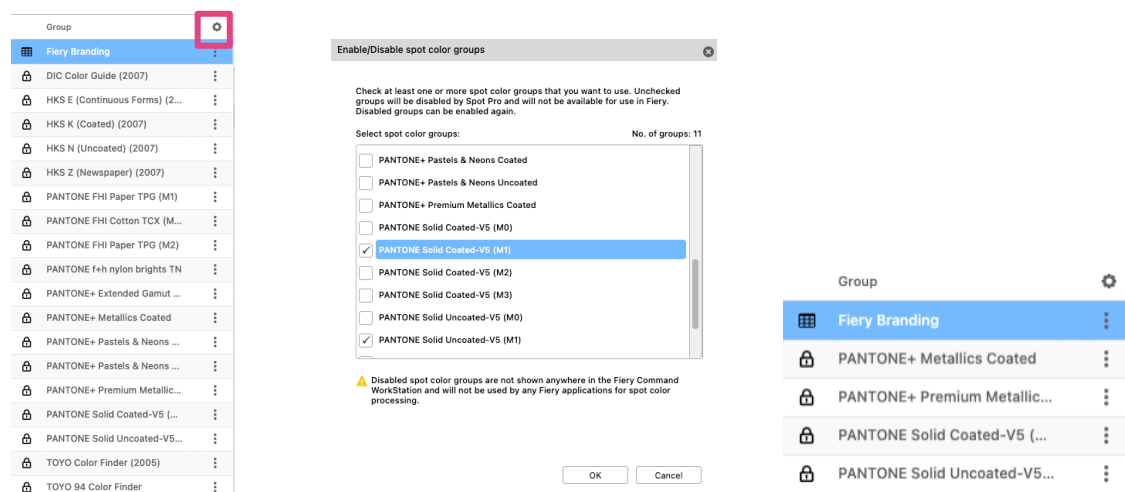
The Fiery server ships with a wide variety of spot color groups installed by default. However, some users may never use some of the default groups. But, when they search for a specific spot color, they still must wade through the results showing many unneeded colors.

Fiery Spot Pro allows users to enable (show) or disable (hide) spot color groups. They can choose to enable only the groups they use on a regular basis. Now, when searching for a specific spot color, Fiery Spot Pro will only search in the enabled groups, delivering faster search results.

Users can re-enable disabled spot color groups at any time.

Disabled spot color groups are not only hidden in Fiery Spot Pro, but in other applications that access spot colors, such as Fiery ImageViewer, Fiery TrueBrand, and Job Properties.

The ability to enable/disable spot color groups applies to default spot color groups, imported groups, and custom spot color groups.



Example of spot color groups panel as -is. Note the gear icon in the upper right. Click on this to open the enable/disable window

In the configuration window, uncheck any groups you don't want to show. Or, check the groups that you do want to show

Example of spot color groups panel after choosing which groups should be visible.



[Watch the video](#)

Benefits:

- Streamlines the spot color experience by only showing a user's desired spot color groups
- Disabling unneeded spot color groups results in a more efficient spot color search

Availability:

Cutsheet external servers	Optional
Cutsheet embedded servers	Optional
Server or client feature	Server

Show measured Delta E on swatch books

In Fiery Spot Pro, the operator can choose to display the measured Delta E (dE) of colors in printed swatch books. This feature will prompt the operator to measure the swatch colors before the swatch book prints.



Swatch book showing measured dE for each color.



Close up of measured dE

Benefit:

- Shows brand owners how accurately brand colors will print on a specific media

Availability:

Cutsheet external servers	Optional
Cutsheet embedded servers	Optional
Server or client feature	Client

Fiery ImageViewer enhancements

Fiery ImageViewer offers a range of powerful new capabilities for Fiery FS600 Pro servers. These features are designed to help users get even more efficient in prepress tasks:

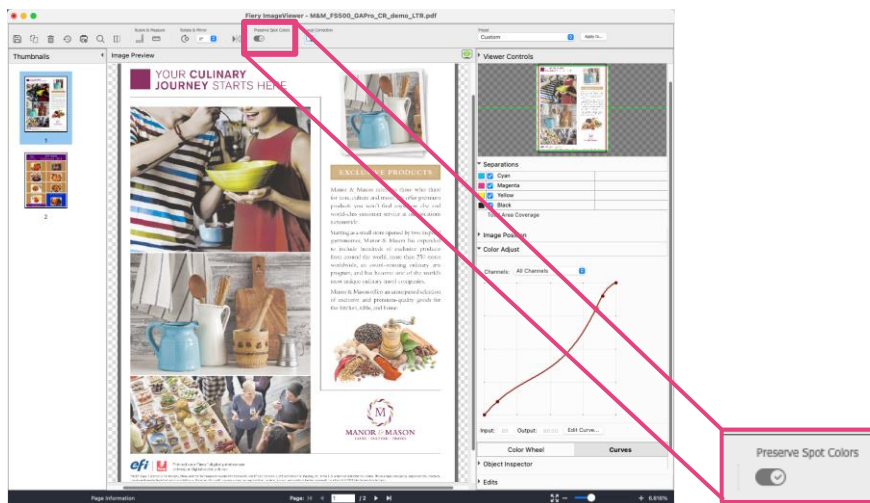
- Preserve spot colors when editing ImageViewer curves
- Show the imageable area on a page
- Ruler guidelines for precise page inspection
- Usability improvements
- Visual image shift (find more information in the [Management section](#))

Fiery ImageViewer is part of the [Fiery Graphic Arts Pro Package](#) for cutsheet external servers, and the [Fiery ColorRight Package](#) for cutsheet embedded servers.

Preserve spot colors with Fiery ImageViewer curves

Fiery ImageViewer provides the ability to adjust color curves in a document across the entire page or for selected page areas. If a user needs to adjust the color curves of the page or a specific area, but needs to ensure that the change doesn't affect spot colors in that area, ImageViewer now allows them to adjust color curves as needed, but preserve any spot colors.

For example, if a page contains an image and a company logo, the user can adjust the color curves for the image while preserving the brand colors of the company logo.



When users toggle the Preserve spot colors switch to on in Fiery ImageViewer, curve edits will not affect spot color values.



[Watch the video](#)

Benefits:

- Flexibility to edit color curves as needed, while still preserving brand color integrity

Availability:

Cutsheet external servers	Optional
Cutsheet embedded servers	Optional
Server or client feature	Server

Show imageable area

Users can now view the imageable area of a sheet. This helps confirm that all content will print in that area, and that no content will be impacted during the finishing process. Seeing this preview before printing helps reduce wasted prints and minimize rework.

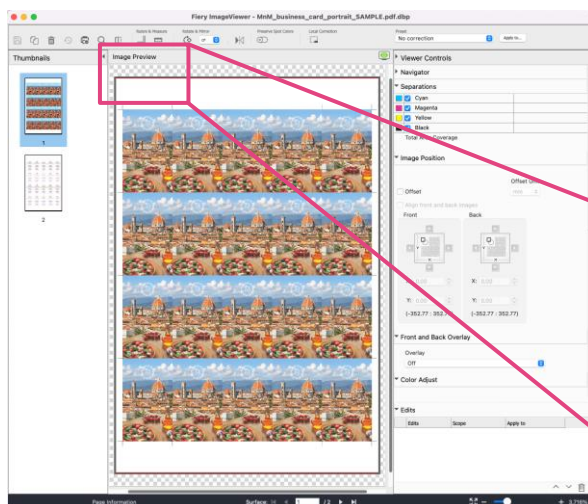
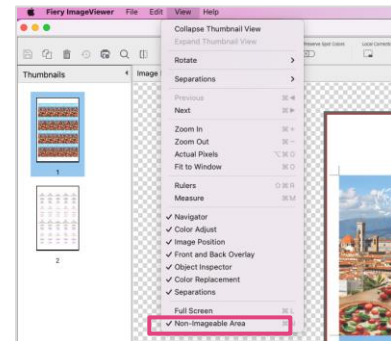
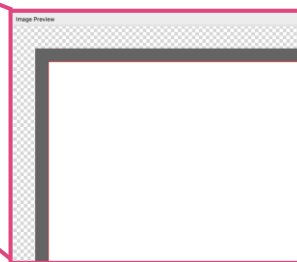


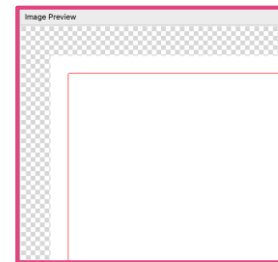
Image Preview with "view non-imageable area" turned on.



"View non-imageable area" option in ImageViewer



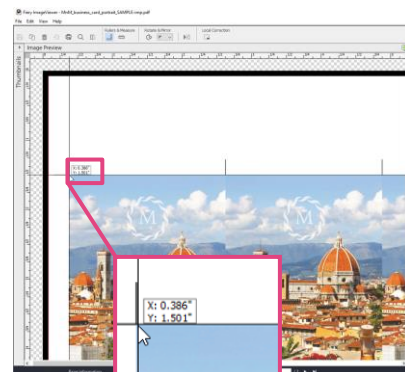
Close up view of highlighted area. The black border indicates the non-imageable area of the page. The red line indicates the page border.



View of the same area with "view non-imageable area" turned off. The red line indicating the page border is more visible.

Ruler guidelines

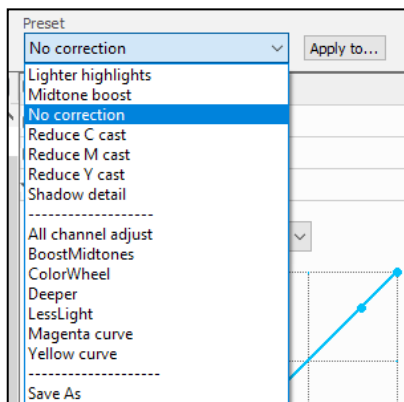
The ruler tool now includes the ability to use guidelines to ensure page objects line up with their intended position on a page. Users can drag the horizontal and vertical guides from the corner of the window to wherever they want. The guides will show the distance of a specific point from the edges of a page.



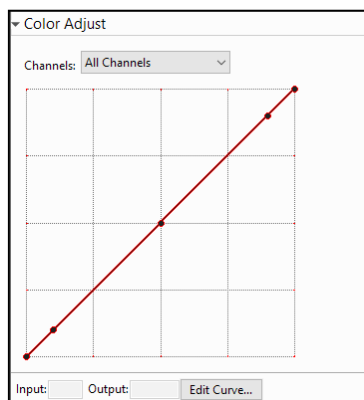
New ruler guidelines help ensure page objects are in the proper position on a page.

Usability improvements

- Fiery ImageViewer curve presets, both default and user-created, are now ordered alphabetically in the dropdown menu. This makes it faster for users to find the preset they need.
- All Channels is now the default view. Using All Channels (also known as global curve adjust), users can adjust the curves for all the channels at the same time. This makes it faster to make curve adjustments across all separations such as midtone, shadow, or highlight curves



Presets are now listed alphabetically



All Channels is now the default view

Benefits:

- Helps reduce waste and rework by knowing in advance if any page areas will not print.
- Ensures page objects are in the proper position on the page.
- Gives faster access to presets
- Enables faster curve adjustments

Availability:

Cutsheet external servers	Optional
Cutsheet embedded servers	Optional
Server or client feature	Client

PrintWide 2020 source profile support

Support for this Idealliance reference profile gives users advantages in scenarios where they want to produce more saturated results:

- The PrintWide 2020 profile can act as an intermediate CMYK "translation space" in which users can convert highly saturated original images (usually RGB) without losing color fidelity.
- The PrintWide 2020 profile can act as a "saturation booster" for CMYK files when assigned to a CMYK file.

Benefits:

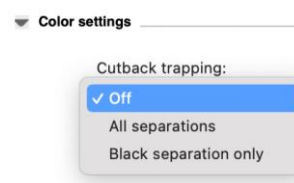
- Produces maximum gamut results for both RGB and CMYK files, when required, without any negative impact on critical color areas such as skin tones and neutrals

Availability:

Cutsheet external servers	Standard
Cutsheet embedded servers	Standard
Server or client feature	Server

Cutback trapping

If operators see an individual ink/toner from a composed color on a white background because of engine mis-registration, cutback trapping lets them manually define specific separations (usually darker separations) that will cut back from the edges of an object. This is also useful in CMYK+ printing.



Cutback trapping settings in Job Properties



Example of good output (alignment is fine)

Example of mis-registered output.

Cutback trapping pulls back all inks/toners except the darkest one to compensate for mis-registration

Benefits:

- Helps operators compensate for mis-registration issues to ensure high-quality output.

Availability:

Cutsheet external servers	Check Fiery server materials to confirm support
Cutsheet embedded servers	Check Fiery server materials to confirm support
Server or client feature	Server

Enhanced support for inline measurement instruments

Dynamic patch layout support

Fiery FS600 Pro servers have built-in support for custom charts and wedges, to use with inline measurement instruments that are fully or partially based on RGB scanner technology. With built in support, operators don't need server patches to print and measure future custom charts and wedges.

Benefits:

- Provides users with an instant solution when they need to use a new chart, and/or wedge layouts.

Improved measurement accuracy

A new algorithm places color patches for charts and wedges in the ideal order needed to reduce the negative affect that neighboring patches could have on the accuracy of readings. This feature is available for inline measurement instruments that are fully or partially based on RGB scanner technology.

Benefits:

- Improves the accuracy of measurement data from inline measurement instruments.

Availability:

Cutsheet external servers	Check Fiery server materials to confirm support
Cutsheet embedded servers	Check Fiery server materials to confirm support
Server or client feature	Server

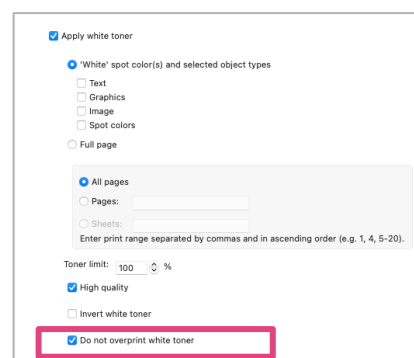
Specialty color enhancements

The features in this section may be available for specific print engines that support specialty colors or CMYK+.

Overprint control of specialty colors

With Fiery servers that support specialty colors, the user can override a file's overprinting instructions, causing objects with specialty colors to knock out the background. This allows the specialty toner to print directly on the substrate.

This eliminates the possibility of other colors showing through beneath the specialty colors.



☒ Apply white toner

☒ 'White' spot color(s) and selected object types

☐ Text

☐ Graphics

☐ Image

☐ Spot colors

☐ Full page

☒ All pages

☐ Pages:

☐ Sheets:

Enter print range separated by commas and in ascending order (e.g. 1, 4, 5-20).

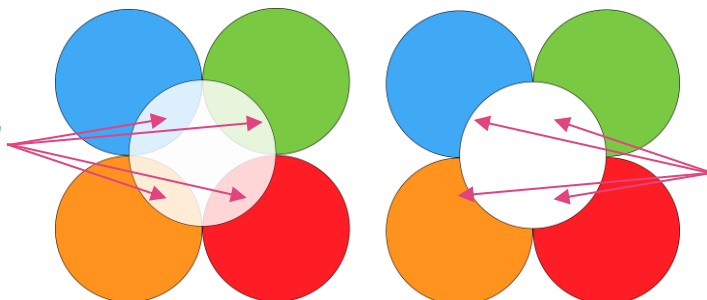
Toner limit: 100 %

☒ High quality

☐ Invert white toner

☒ Do not overprint white toner

The white toner overprints other toners, which can produce undesirable



Selecting "Do not overprint specialty color" knocks out any other toner underneath it, printing the specialty color directly onto a substrate.

Benefits:

- Gives the user more control of how specialty colors overprint

Availability:

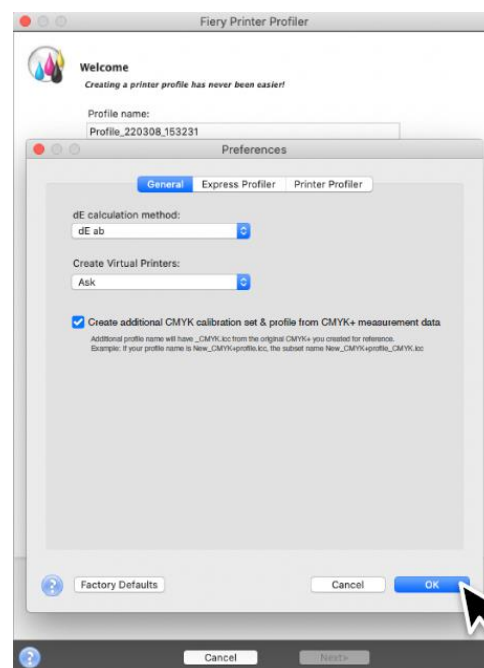
Cutsheet external servers	Check Fiery server materials to confirm support.
Cutsheet embedded servers	Check Fiery server materials to confirm support.
Server or client feature	Server

Subset profiling

Subset profiling automatically creates a CMYK profile and calibration when an operator creates a CMYK+X profile and calibration. This means users only need to print and measure one set of charts to create two high-quality results – one for printing in CMYK, and one for printing in CMYK plus gamut-extending colors.

Benefits:

- Greatly decreases the profiling effort when running the printer in both CMYK only, plus CMYK+ mode.



Availability:

Cutsheet external servers	Check Fiery server materials to confirm support Requires Fiery Color Profiler Suite
Cutsheet embedded servers	Check Fiery server materials to confirm support Requires Fiery Color Profiler Suite
Server or client feature	Client (Fiery Color Profiler Suite 5.5 and above)



Productivity

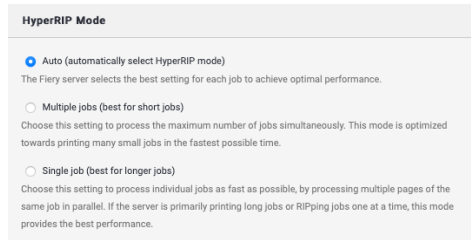
Intelligent HyperRIP

The proprietary Fiery HyperRIP™ technology makes market-leading Fiery servers even faster by processing multiple segments of a job or several jobs simultaneously across multiple processor cores.

Previously, choosing the HyperRIP mode was only available as a system setting. Single job mode was the default. Once users selected a HyperRIP mode, it would apply to all jobs unless they manually changed it by updating the setting in Configure, followed by a server reboot.

Now, Intelligent HyperRIP automatically switches the Fiery server between single-job and multiple-job modes. This can improve throughput and overall productivity in print environments that produce a wide variety of jobs by intelligently choosing the optimal HyperRIP mode for each job.

✦ In some cases, Intelligent HyperRIP on a Fiery FS600 Pro NX Premium server can process a run of mixed length jobs **up to 2 times faster** than a Fiery FS500 Pro NX Premium server with traditional HyperRIP.



HyperRIP mode options in Fiery Configure

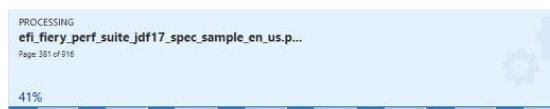
In addition to faster processing, Intelligent HyperRIP improves overall production efficiency, as the operator has no need to stop production and reboot the Fiery server to change the HyperRIP mode.

Intelligent HyperRIP (Auto mode) is the server default. However, the user still has the option to select either multiple jobs mode or single job mode as the default. This could be useful in cases where most jobs are similar in length (either short jobs, such as book covers, or longer jobs, such as book blocks). Intelligent HyperRIP is available when using both Adobe PDF Print Engine or PostScript (CPSI) processing paths. Existing features, such as Rush RIP, still work with jobs processed by Intelligent HyperRIP in single job mode.

Note that not all job and workflow types support some of the specific HyperRIP modes. Please review the sections for more details.

Single job mode

Simultaneously RIPs a single job across multiple processors. Most useful for longer jobs of 20+ pages.





File formats supported by HyperRIP in single job mode

This table lists the file formats supported, and the limitations with some workflows and print settings. If the Fiery server determines a file is not eligible for HyperRIP, it will automatically route the job through the single RIP path.

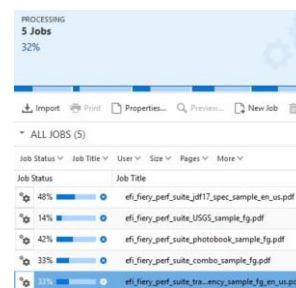
File type	Plain	Duplex	XObjects Form caching	Mixed media	Control bar	Print range/page/record	Imposition	Postflight	Direct queue
PostScript (CPSI) workflow									
PDF	Yes	Yes	Yes	Yes	Yes	Yes	Yes	Yes	Yes
PostScript (PS)	Yes	Yes	Yes	Yes	Yes	Yes	Yes	Yes	Yes
PDF/VT	Yes	Yes	Yes	Yes	Yes	Yes	No	No	Yes
PPML	Yes	Yes	Yes	Yes	Yes	Yes	No	No	Yes
VPS	Yes	Yes	Yes	Yes	Yes	Yes	No	No	Yes
VIPP (Xerox servers only)	Yes	Yes	Yes	Yes	Yes	Yes	No	No	Yes
Fiery FreeForm™ Master	No	No	No	No	No	No	No	No	No
FreeForm Variable	Yes	Yes	Yes	Yes	Yes	Yes	-	-	Yes
FreeForm Create (.ffc)	Yes	Yes	Yes	Yes	Yes	Yes	Yes	Yes	Yes
FreeForm Plus (.ffp)	Yes	Yes	Yes	Yes	Yes	Yes	Yes	Yes	Yes
TIFF	No	No	No	No	No	No	No	No	No
EPS	No	No	No	No	No	No	No	No	No
Adobe PDF Print Engine workflow									
PDF	Yes	Yes	Yes	Yes	Yes	Yes	Yes	No	Yes
PDF/VT	Yes	Yes	Yes	Yes	Yes	Yes	Yes	No	Yes
FreeForm Plus	Yes	Yes	Yes	Yes	Yes	Yes	Yes	No	Yes
PDF group	Yes	Yes	Yes	Yes	Yes	Yes	Yes	No	Yes
PCL workflow									
PCL	No	No	No	No	No	No	No	No	No

Multiple jobs mode

Simultaneously RIPs several jobs across multiple processors. Ideal for short jobs, such as book covers, brochures, or flyers. Some file formats are not supported by the multiple jobs mode and will be processed using a single RIP path. Those are: PPML, PDF/VT, VIPP, PCL, and FreeForm.



[Watch the video](#)



Benefits:

- Intelligently chooses the most efficient HyperRIP mode for each job
- Delivers performance and efficiency gains for runs of mixed-length jobs
- Keeps production running smoothly: no need to stop and reboot the Fiery server to change HyperRIP modes.

Availability:

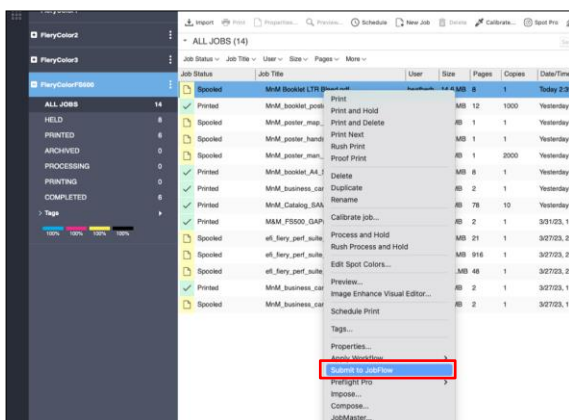
Cutsheet external servers	Standard for NX Premium and select NX Pro servers
Cutsheet embedded servers	Not available
Server or client feature	Server

Submit jobs to Fiery JobFlow through Fiery Command WorkStation

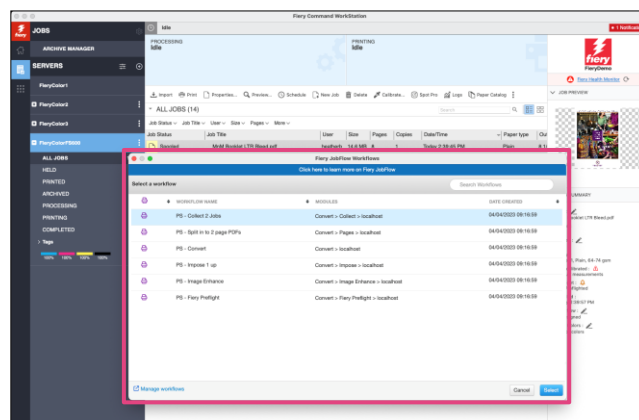
Submitting jobs into automated prepress workflows has never been easier. Users can now seamlessly submit jobs to Fiery JobFlow™ using various submission methods including Fiery Command WorkStation, Fiery Virtual Printers, and print drivers. This provides greater flexibility in the job submission process, plus reduces the potential for human error, and makes automation more accessible and easier to use.

By submitting jobs directly from Command WorkStation or Virtual Printers, users can streamline their workflow and avoid unnecessary manual steps in the prepress process. This leads to increased productivity and time savings. In addition, Fiery print drivers provide a convenient option for users to submit jobs to JobFlow from their desktop without navigating through multiple applications.

To submit a job through Command WorkStation, users can simply right-click on a job in the held queue and select "Submit to JobFlow." This will open a new window where users can select the JobFlow automation workflow they want to use for that job.

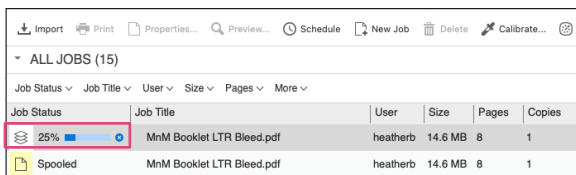


Right-click on a job and select Submit to JobFlow.



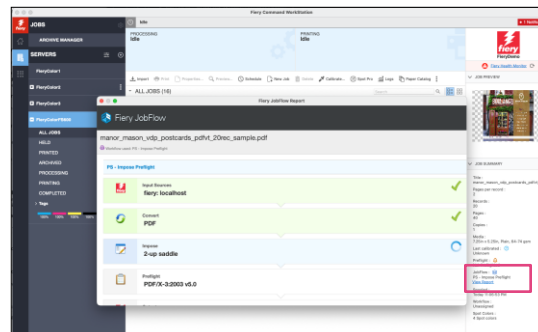
The JobFlow workflow window will open for users to choose which workflow to apply.

Once they've submitted a job, users can keep track of its progress through the JobFlow workflow by checking the Job Status column of the Held queue or by opening the JobFlow Report from the Job Summary pane in Command WorkStation.



Job Status	Job Title	User	Size	Pages	Copies
25%	MnM Booklet LTR Bleed.pdf	heatherb	14.6 MB	8	1
Spooled	MnM Booklet LTR Bleed.pdf	heatherb	14.6 MB	8	1

Check the workflow progress in the Job Status column



JobFlow	Job Title	User	Size	Pages	Copies
25%	MnM Booklet LTR Bleed.pdf	heatherb	14.6 MB	8	1
Spooled	MnM Booklet LTR Bleed.pdf	heatherb	14.6 MB	8	1

Check the workflow progress by opening the JobFlow report

Use-case example:

Submit any file format*, including JPEGs, to Fiery Command WorkStation. Fiery JobFlow converts the files into a PDF before sending them to the Fiery server. To enable this, simply create a Virtual Printer with a JobFlow conversion workflow.

* See the full list of supported file formats [here](#).

Benefits:

- Makes automation user-friendly and readily accessible
- Provides various channels to seamlessly submit jobs to automated workflows

Availability:

Cutsheet external servers	Standard with Fiery JobFlow Base Optional for workflows that require Fiery JobFlow capabilities
Cutsheet embedded servers	Not available
Server or client feature	Server

Fiery JobExpert enhancements

With Fiery FS600 Pro, we are introducing two new enhancements for Fiery JobExpert: PostScript support for jobs submitted through a Fiery Virtual Printer and Find Record Length to leverage VDP capabilities.

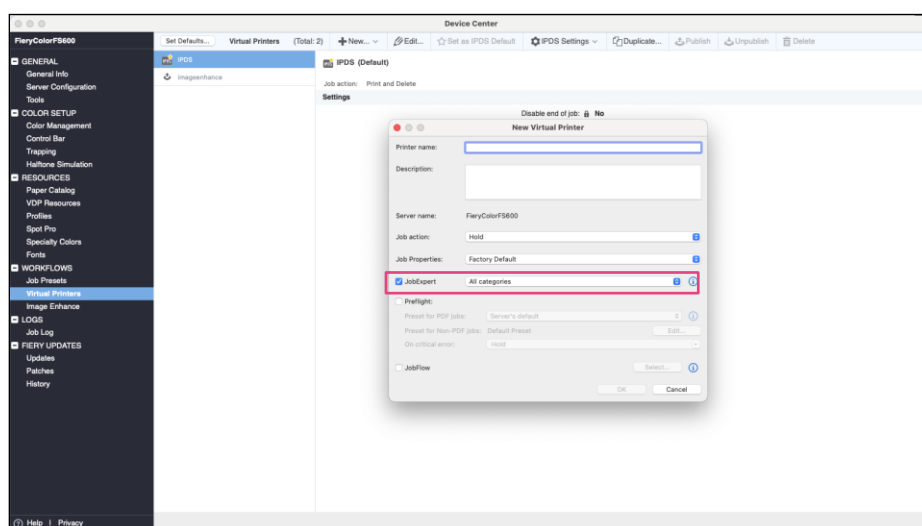


PostScript support

Fiery JobExpert is now PostScript-compatible in addition to PDF files. This allows users to leverage the intelligent automation of JobExpert for jobs submitted through a Virtual Printer.

By using, JobExpert operators can ensure the optimum print settings are enabled to produce the highest quality with minimal effort, no matter how users submit the job.

To use JobExpert from a print driver, users need to turn it on in the Virtual Printer settings. Once configured, the Virtual Printer will automatically apply JobExpert to all files submitted through it.



Enable Fiery JobExpert when configuring a Virtual Printer

Benefit:

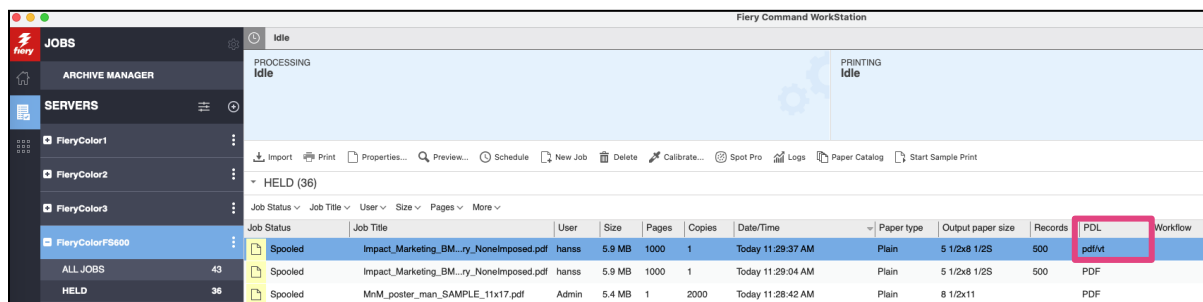
- Automatically apply the optimum Fiery settings for jobs submitted through a print driver or Virtual Printer to improve image quality

Find Record Length

Fiery JobExpert now analyzes simple PDF files and identifies sets of repeating pages among variable data.

When Fiery JobExpert detects reoccurring content, it stops analyzing the remainder of the file to speed up analysis time. JobExpert then converts the PDF into a PDF/VT* file so it can identify repeating records. This enables users to take advantage of variable data capabilities such as printing specific record numbers, or using certain VDP features when imposing a job.

* Note that the PDF/VT conversion is only to enable VDP capabilities, it will not be RIPped as a VDP file



After applying JobExpert to the flattened PDF, it now appears as a PDF/VT file with records

Benefit:

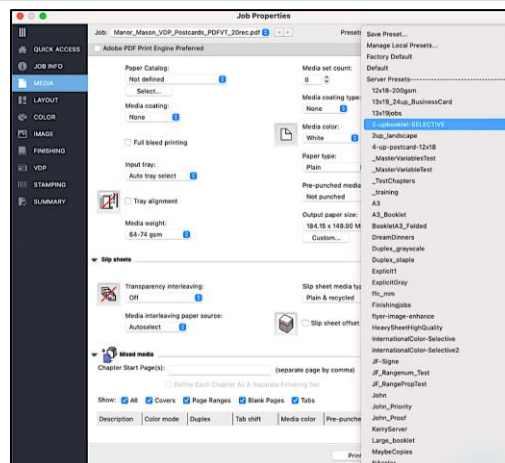
- Converts basic PDF files with repeating content to be recognized as PDF/VT files to use variable data capabilities during job preparation

Availability:

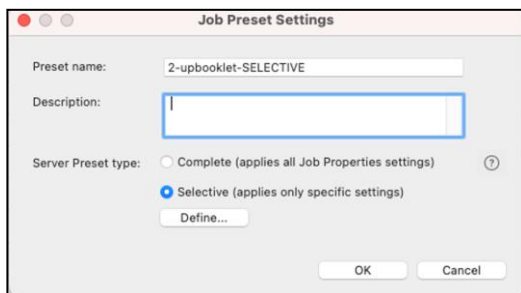
Cutsheet external servers	Standard
Cutsheet embedded servers	Optional – requires Fiery JobExpert and PDF Processing Kit
Server or client feature	Server

Selective settings presets

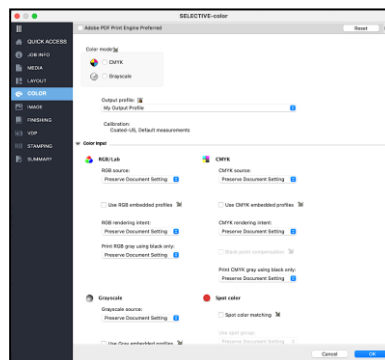
Fiery job presets are now more flexible to use than ever before. A new type of server preset – a Selective settings preset – can contain specific job settings **only**, so that it doesn't touch existing settings when applied. This means that users can have smaller groups of "often-used" job settings they can apply on top of existing settings, adding greater flexibility, and reducing the overall number of presets needed to achieve the desired outcome.



A Selective preset can be added to a job which has existing settings applied that need to be retained



Preset creation dialog box from Device Center with the choice of both server preset types



Here, a user defines specific color settings as part of a Selective preset

Selective presets are created in Device Center by choosing Job Presets. Good examples of where Selective presets provide flexibility are where only imposition settings or color settings need to be changed. Users can also apply more than one Selective preset to the same job for even greater flexibility.



[Watch the video](#)

Benefits:

- This more flexible type of preset can be used cumulatively.
- Reduces the number of presets needed overall.

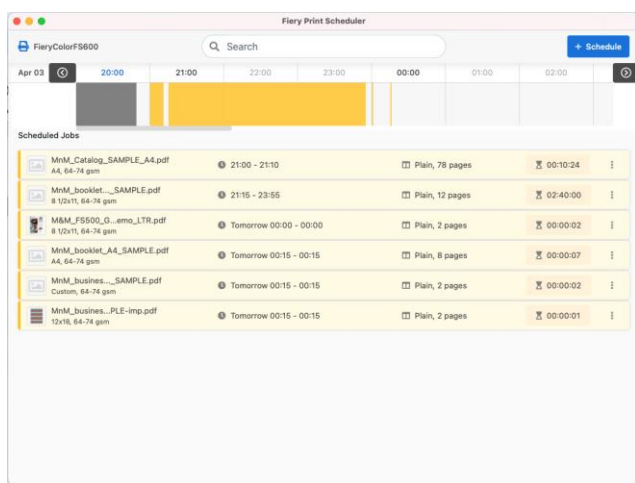
Availability:

Cutsheet external servers	Standard
Cutsheet embedded servers	Standard
Server or client feature	Client

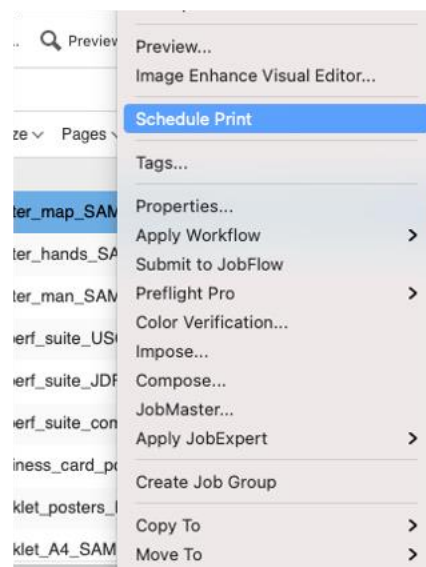
Management

Fiery Print Scheduler

This new tool lets users easily schedule job printing through a visual interface. Operators can schedule and slot jobs into a 24-hour window to best align with daily production demands, equipment availability, and customer delivery deadlines. Fiery Print Scheduler helps operators have clear visibility into the printer's use during the day, ensuring it operates at maximum capacity.



Fiery Print Scheduler window



Right-click on a job to schedule

Multiple users can access the tool from the Toolbar, or with a right-click on the job. Fiery Print Scheduler leverages the Print Time Estimation feature to let users plot a job in the most appropriate print window, or slot a job into the schedule easily at the next available time. Users can add single or multiple jobs to the schedule with just a few clicks.



Fiery Print Scheduler accessed from the Command WorkStation Toolbar

The tool is also dynamic. For example, if the number of copies required for an already scheduled job changes, the schedule will automatically adjust to accurately reflect the new start and finish times.



[Watch the video](#)

Benefits:

- Ensures the timely production of customer jobs.



- Helps maximize the production capacity of printers.
- Facilitates more accurate communication with customers on job delivery times.
- Simplifies job re-scheduling when things change.
- Provides print workload transparency to all operators.

Availability:

Cutsheet external servers	Standard
Cutsheet embedded servers	Standard
Server or client feature	Server

Job Groups

This feature lets users combine multiple jobs into a group so that they can be treated as a single job by Fiery Command WorkStation. There are two main scenarios where using a Job Group is valuable:

1. **Print Group** – for strictly ordering the printing of a set of jobs.
2. **PDF Group** – to combine multiple jobs for use with Fiery Impose, Fiery Compose, or Fiery JobMaster™.

	Spooled	MnM_poster_man_SAMPLE_11x17.pdf	Admin	5.4 MB	1	Submit to JobFlow
	Spooled	MnM_poster_hands_SAMPLE_11x17.pdf	Admin	4.0 MB	1	Apply JobExpert
	Spooled	MnM_poster_map_SAMPLE_11x17.pdf	Admin	5.5 MB	1	Create Job Group
						Copy To

Right-click to create a group from multiple selected jobs

For both types of groups, users can apply Job Properties to the whole group; plus add, remove, or reorder the jobs within a group after creating the group. However, there are differences between the group types:

Print Group

When using this type, jobs will be printed in the order in which they appear in the group. Properties can be applied to individual jobs within a group, or, applied to the group as a whole.

This type of group is useful when multiple jobs need to be printed in a specific order, such as to eliminate the need for any hand collation for the chapters of a manual, when each job is a chapter.

PDF Group

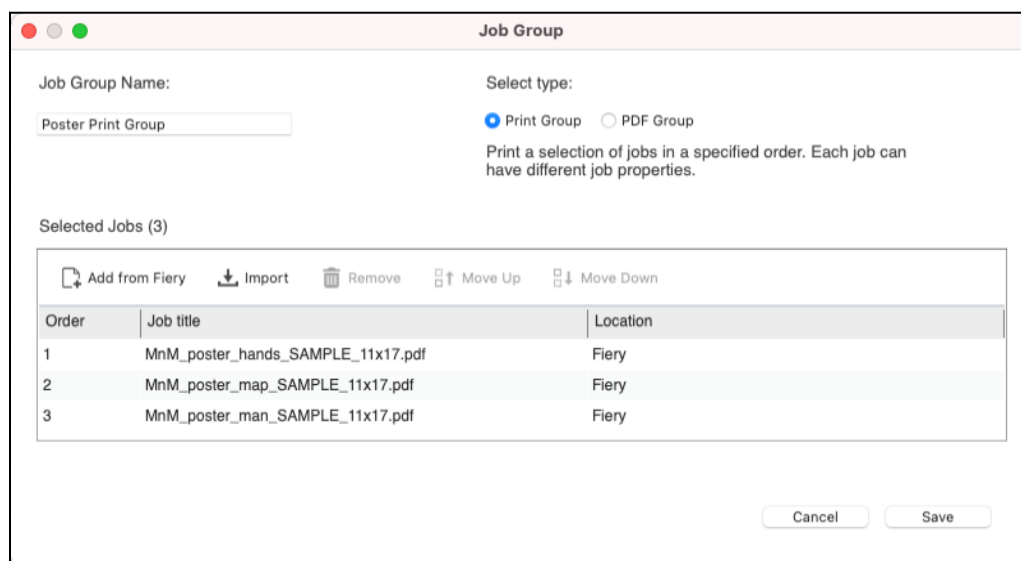
This type combines jobs in the order they appear within the group. Properties can be applied to the group as a whole.

For example, if different business cards need to be imposed on a single sheet using Fiery Impose, or chapters need to be combined for a binder and Fiery JobMaster is needed for mixed finishing – it might be useful to group them this way.

① Note: a subscription-based license for Fiery Impose, Compose, or JobMaster is required to use PDF Groups for makeready purposes

Summary: PDF Group and Print Group

	PDF Group	Print Group
Primary use case	Multi-job use with Fiery makeready applications	Multi-job organization
Supported file types	PDF only	Any supported Fiery file type
Print settings	Group level	Group or job level
Makeready application support	Group level	Job level



Job Group

Job Group Name:

Select type: ☒ Print Group ☐ PDF Group

Print a selection of jobs in a specified order. Each job can have different job properties.

Selected Jobs (3)

Order	Job title	Location
1	MnM_poster_hands_SAMPLE_11x17.pdf	Fiery
2	MnM_poster_map_SAMPLE_11x17.pdf	Fiery
3	MnM_poster_man_SAMPLE_11x17.pdf	Fiery

Job Groups window where jobs can be added, imported, moved in order, or removed from a Fiery server

Benefits:

- Allows the application of Job Properties to a group of jobs at the same time, increasing setup productivity and consistency.
- Provides greater control over the print queue, plus adds effective ways to import and manage jobs.
- Offers flexible editing of jobs within a group after creating the group.
- Speeds up the creation of new groups that are similar in content.

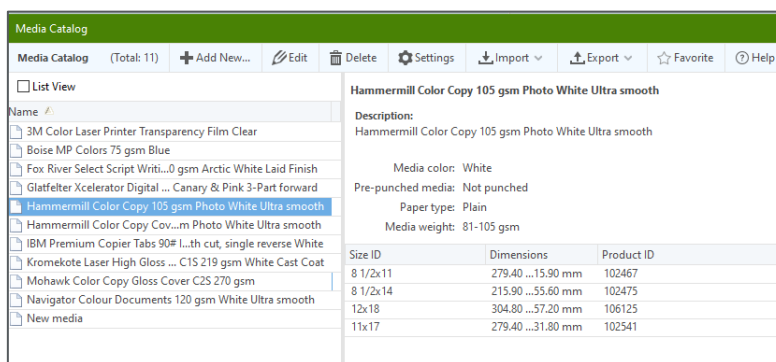
Availability:

Cutsheet external servers	Standard Requires a subscription-based license type if PDF Groups are used with Fiery Impose, Compose, and JobMaster
Cutsheet embedded servers	Standard Requires a subscription-based license type if PDF Groups are used with Fiery Impose, Compose, and JobMaster
Server or client feature	Server

Media Catalog

Media Catalog is the media/paper management interface for most Fiery FS600 Pro servers and replaces Fiery Paper Catalog.

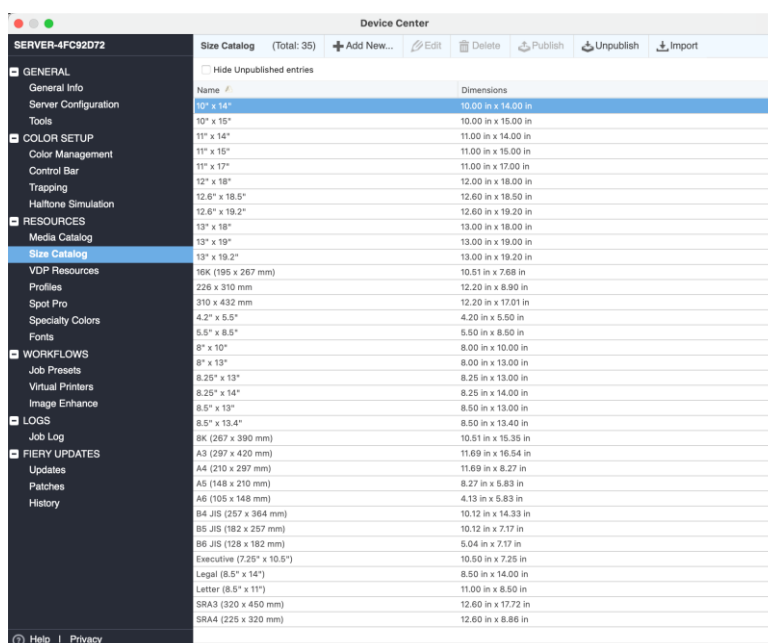
Media Catalog greatly simplifies the process of managing multiple media types of different sizes. It enables a single catalog entry for a media type, including multiple sizes (where all other attributes are the same). Calibrations and color profiles are assigned a catalog entry, which then applies them automatically to all sizes of a given media.



A Media Catalog entry selected with multiple sizes associated with it

Size Catalog

Size Catalog is a component of Media Catalog that creates a central library for all media sizes used by the printer. Size Catalog makes it easy to quickly associate additional media sizes with an entry in Media Catalog, as users simply need to choose the right size of media from the dropdown menu.

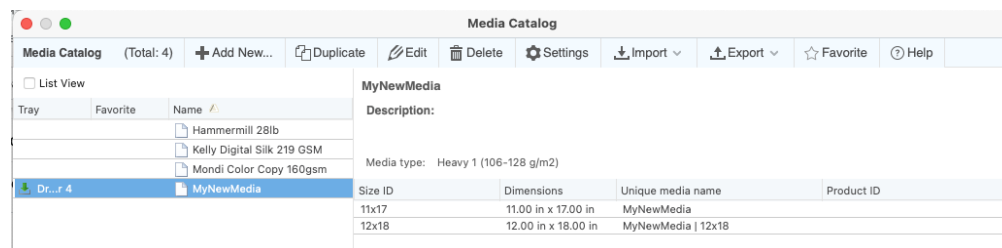


Size Catalog in Device Center.

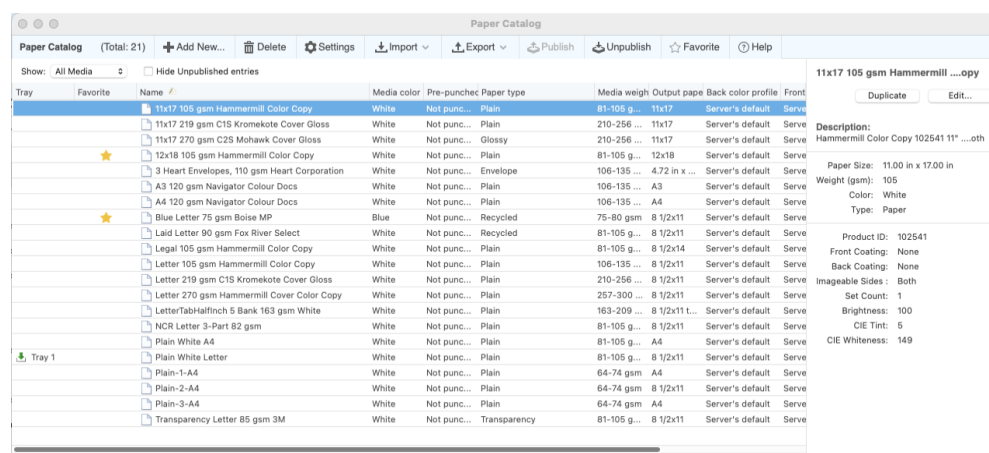


Comparison: Media Catalog versus Paper Catalog

Media Catalog



Paper Catalog



Feature	Paper Catalog	Media Catalog
Single media name for all sizes	No	Yes
Favorites	Yes	Yes
Bi-directional communication (on supported engines)	Yes	Yes
Size Catalog	No	Yes
Unpublish media entries	No	Yes
Hide unpublished media entries	No	Yes
Create custom sizes for all media	No	Yes
Create custom sizes for a specific media	Yes	No
Apply output profiles to all sizes of a media	No	Yes
Apply output profiles to a single media size	Yes	No
Add new media based on tray/drawer configuration	Yes	Yes
Support for 1-step color management	Yes	Yes
Support for Zero-touch recalibration	Yes	Yes
Import/export catalog (on supported engines)	Yes	Yes
Back up catalog (on supported engines)	Yes	Yes
Set Page Device support	Yes	Yes
JDF support	Yes	Yes



Benefits:

Fewer overall media entries lead to:

- Easier sorting, administration, and management.
- Faster navigation to a particular media in the list due to the reduced number of entries.
- Less chance of errors on media-detail entry due to the simplified workflow.
- Greatly simplifies the color management of media types.
- Compliments 1-step color management and Zero-touch recalibration as all media sizes are color managed in one go.

Availability:

Cutsheet external servers	Check Fiery server materials to confirm support
Cutsheet embedded servers	Check Fiery server materials to confirm support
Server or client feature	Server

Global Paper/Media Catalog edits

Fiery FS600 Pro servers remove the restriction of editing Media or Paper Catalog entries that are associated with a job in the queue. This means that if a job is using an existing Media or Paper Catalog entry, and this entry is edited or removed, the job will retain the original entry in Job Properties and the catalog association will be removed so that the modification doesn't affect previous jobs.

This feature lets operators edit Media or Paper Catalog entries that are associated with a job. Fiery FS600 Pro servers have no restrictions on editing catalog entries that are already in use. If a job already has an entry assigned, and that entry is edited or removed, the job will retain the original entry job properties, but the catalog association will be removed.

Benefit:

- Significantly reduces the time needed for media or paper catalog updates as users no longer need to disassociate catalog entries from jobs before they make entry edits.

Availability:

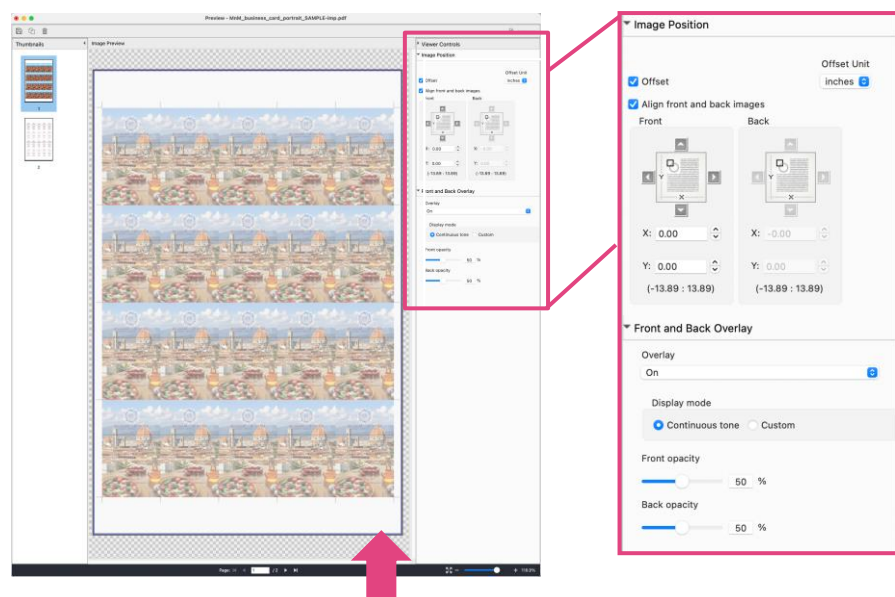
Cutsheet external servers	Standard
Cutsheet embedded servers	Standard
Server or client feature	Server

Visual image shift

Users now have a visual way to shift the page content of an image on a sheet. This is helpful to correct engine misregistration, to fix a problem in a job that has fundamental offset issues, or to manually shift content to adapt to finisher behavior (such as hole punch or other binding functions).

Visual image shift is available in both Preview and Fiery ImageViewer (for servers with licenses for Fiery ColorRight Package or Fiery Graphic Arts Pro Package). It provides a visual way to perform shifts of image content on the front and back sides of a sheet. Previously, users could do this in Job Properties (changes were applied when the job was RIPped), but there was no live preview of the changes.

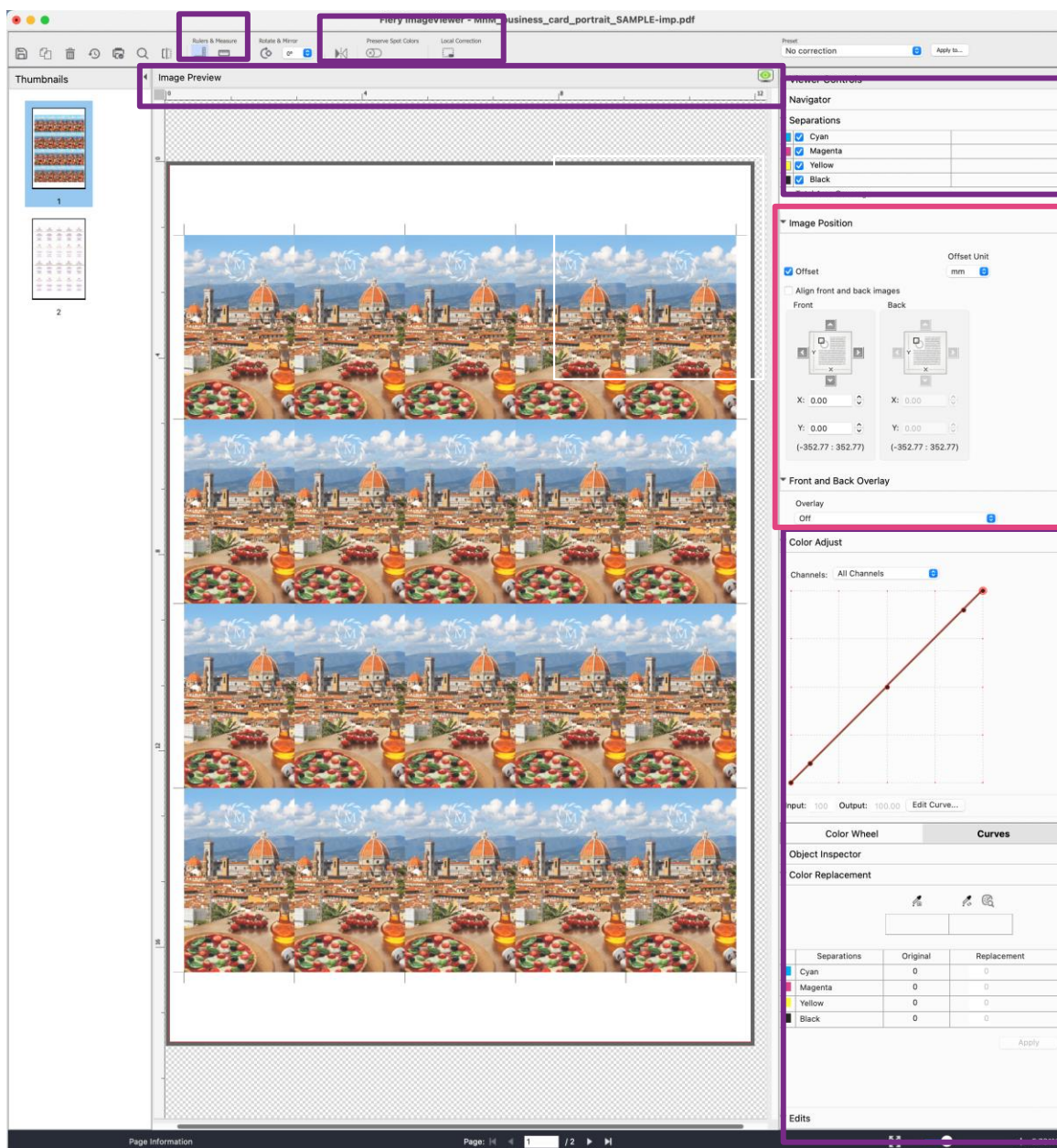
Now, users can see the shifted RIPped content in real time as they make precise adjustments. They can choose to align the front and back images together or adjust each page independently. If the “Non-imageable area” option is on, a gray border appears in the non-imageable area of the page. This helps ensure that any shifted content remains in the printable area of the page.



Visual image shift in Fiery Preview. Note the Image Position section in the right-hand sidebar. The non-imageable area is highlighted with a gray border.

Not only do users see a visual preview but, since the changes are made on the RIPped file, they don't need to re-RIP the file before printing.

Fiery ImageViewer provides additional benefits. The Ruler and Measure tools, along with a much more powerful magnification function, provide a more precise preview of shifted content. Users also get the all-in-one convenience of other color editing functions in Fiery ImageViewer, such as adjusting color curves or making color replacements.



Visual Image Shift in Fiery ImageViewer highlighted in red. Additional ImageViewer functionality not available in Fiery Preview is highlighted in purple.



[Watch the video](#)



Benefit:

- Provides a visual interface to adjust content placement on the sheet, with few or no proof prints required

Availability:

Cutsheet external servers	Standard in Preview Option – Fiery ImageViewer requires a Fiery Graphic Arts Pro Package license.
Cutsheet embedded servers	Standard in Preview Option – Fiery ImageViewer requires a Fiery ColorRight Package license
Server or client feature	Server

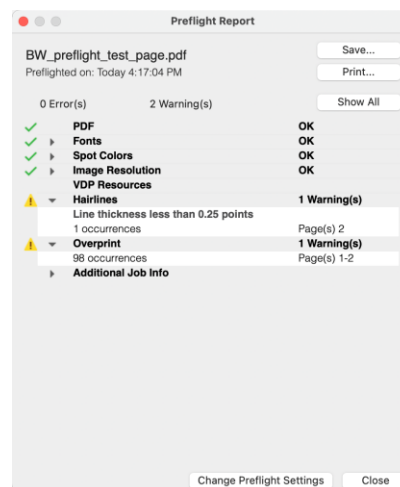
Fiery Preflight for black-and-white external servers

Fiery FS600 Pro external black-and-white servers include Fiery Preflight as a new standard feature.

Fiery Preflight provides basic preflight checks for problems in a file, such as:

- Missing elements like VDP resources, or fonts
- Potential errors like low-resolution images or overprints

You can configure Fiery Preflight to match your custom error-checking requirements. Automate basic preflight checks through [Fiery Hot Folders](#); or you can integrate Fiery Preflight with [JobFlow Base/JobFlow](#) for a touchless, fully automated job inspection workflow.



Benefit:

- Make every click count by catching potential file errors before printing a job.

Availability:

Cutsheet external servers	Standard on black-and-white external servers
Cutsheet embedded servers	Not available
Server or client feature	Server



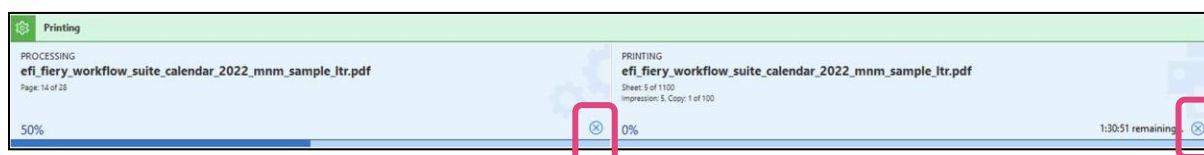
Fiery Command WorkStation enhancements

The following features are included with Fiery Command WorkStation 6.8. They provide faster and more flexible ways to set files up for print, plus new features and functions for better job and server management.

- Easy job cancellation
- Visible server IP address
- Faster job title editing
- Expanded Output Profile name
- Customizable server list
- Paper/Media Catalog favorites
- Print time remaining
- Performance preference for makeready multitasking

Easy job cancellation

The cancel buttons are now visible at any time when jobs are processing or printing, so users can stop further work more quickly.

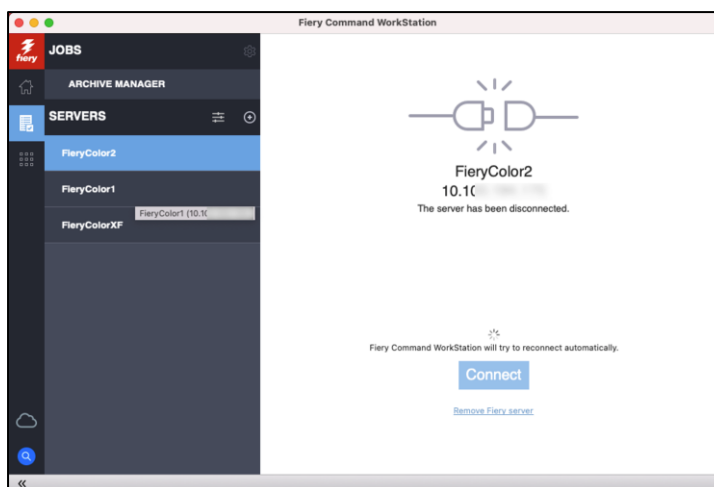


Persistent cancel button for jobs that are processing and printing

Visible server IP address

With Command WorkStation 6.8, the Fiery server IP address is visible when a user hovers over a name in the server list. The IP address will be displayed whether the server is connected or disconnected. This removes the need to go to Device Center or Server Manager to find the IP address of a server.

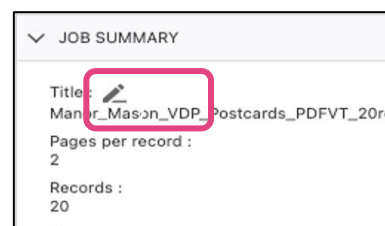
By showing the IP address of a disconnected server in the Command WorkStation main window, it's easier to reconnect and troubleshoot that server.



IP address shown with a mouseover of the server list and on the main window of a disconnected server

Faster job title editing

Users can more readily edit longer job titles in the Job Summary pane. They can edit job names and other fields without scrolling to the right to locate the edit button, for greater convenience and speed when managing jobs.



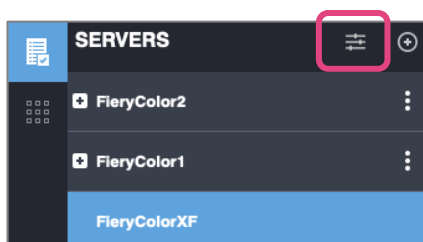
Expanded output profile names

In Job Properties, users can see the output profile name in full in the Color and Quick Access sections in a newly expanded profile pull-down menu. Seeing longer, more descriptive names in full makes it easier and faster for operators to choose the correct profile.

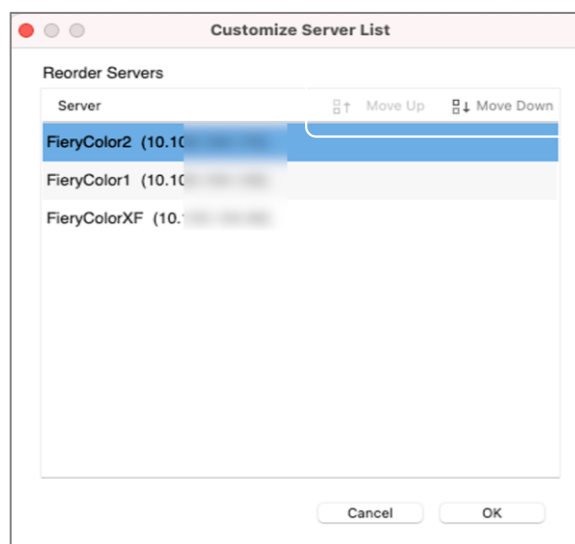


Customizable server list

Operators can reorder Fiery servers in the server list for a more logical order to suit the requirements of their print room. In the Customize Server List dialog, accessed from the slider bars icon at the top of the server list, they can move a server up or down to create whatever order is most productive. This could be alphabetical, grouped by printer type, or to reflect the layout of a print shop. Servers do not need to be connected to be reordered.



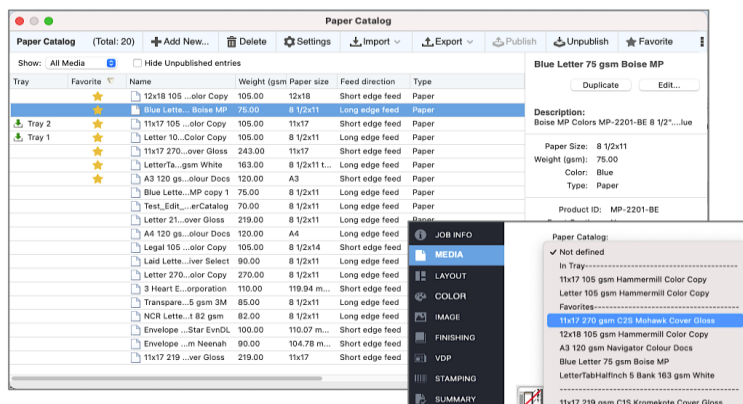
Customize server list icon



Dialog with Move Up and Move Down buttons

Paper/Media Catalog Favorites

To help users select a media type faster in Job Properties, they can mark an entry as a Favorite. This is particularly useful for print environments that handle many paper types.



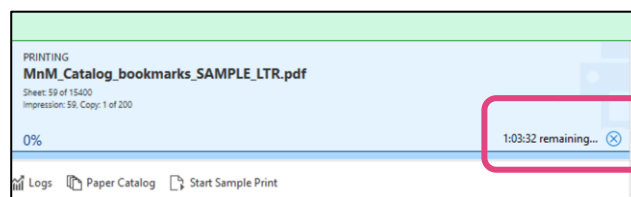
Adding a Favorite in the Paper Catalog dialog box, then selecting it in Job Properties

In the Paper/Media Catalog dialog box, users can check and uncheck this new tag using a right click or the button at the top of the Paper/Media Catalog window.

In Job Properties, they'll then see favorites displayed in a dedicated section after "In Tray" entries – placing them nearer the top of the list for faster selection.

Print time remaining

Once a job starts to print, this feature displays the estimated time it will take for it to finish printing. It shows the remaining time above the printing progress bar on the printing pane to help users plan production. This is the same information shown in the Fiery Ticker, with the additional detail of the seconds remaining.



Print time remaining in hours, minutes, and seconds

Benefit:

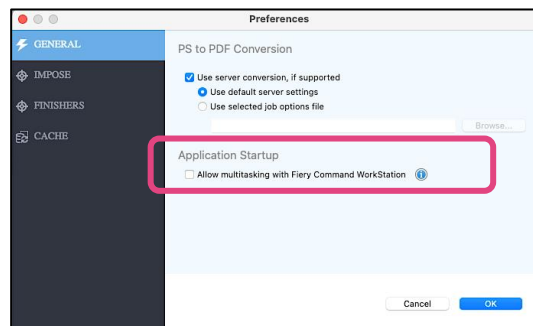
- Faster and more efficient ways to manage files and Fiery servers.
- Faster navigation to the required server.
- Helps operators better plan production.
- Quicker selection of most frequently used paper types.

Availability:

Cutsheet external servers	Standard
Cutsheet embedded servers	Standard
Server or client feature	Client

Performance preference for makeready multitasking

The preference to *Allow multitasking with Command WorkStation* lets a user actively manage their jobs in the Command WorkStation window while they're performing imposition and makeready work. When this preference is selected, a user can actively toggle between the open windows of Fiery Command WorkStation and Fiery makeready applications (Fiery Impose, Fiery Compose, or Fiery JobMaster). However, multitasking may increase the time required to start and load makeready applications.



To prioritize faster launch times for makeready applications, the default preference for *Allow multitasking with Command WorkStation* is off. If a user wants to multitask between makeready work and managing the job queue, they can enable this feature in the preference settings of Fiery Impose, Compose, or JobMaster.

Fiery recommends:

Multitasking OFF: Focus and complete all makeready work for a job before returning to Command WorkStation.

Multitasking ON: Actively switch windows to manage the job queue in Command WorkStation while keeping a job open in a makeready application to perform imposition and other makeready work.

Note: This feature does not apply to Fiery Preview.

Benefit:

- Users can choose where they want more productivity when using Fiery makeready applications.

Availability:

Cutsheet external servers	Optional – requires Fiery Impose, Fiery Compose, or Fiery JobMaster license
Cutsheet embedded servers	Optional – requires Fiery Impose, Fiery Compose, or Fiery JobMaster license
Server or client feature	Client



Connection

Microsoft Windows 10 IoT Enterprise LTSC 2021

New servers have the latest version of Windows 10 installed, Microsoft® Windows® 10 IoT Enterprise LTSC 2021, and it includes the cumulative enhancements provided in all previous Windows 10 versions, up to 21H2.



This version of the OS provides Fiery customers with the latest features and security enhancements from Microsoft; and supports the latest hardware technologies such as Intel CPUs, I/O, RAID, and graphic cards.

In addition, it includes the new Microsoft Chromium-based Edge browser as the default, which provides compatibility with current and future web applications and websites.



Benefits:

- Latest security features
- Long-term support ensures security updates until 2031.

Availability:

Cutsheet external servers	Standard
Cutsheet embedded servers	Not available
Server or client feature	Server

Debian 11 Linux

Fiery embedded servers got an operating system upgrade to Debian 11 Linux. It is the latest stable release of the Debian operating system.

This version adds new security features and several enhancements to the OS core components and extends eligibility to receive future OS security updates.



Benefit:

- Improved stability and security

Availability:

Cutsheet external servers	Not available
Cutsheet embedded servers	Standard
Server or client feature	Server



Support for IPP 2.0

Fiery servers now support IPP 2.0 operations and attributes. This version enables Fiery servers to integrate with modern IPP-based workflows and applications such as cloud printing, authentication, and management.

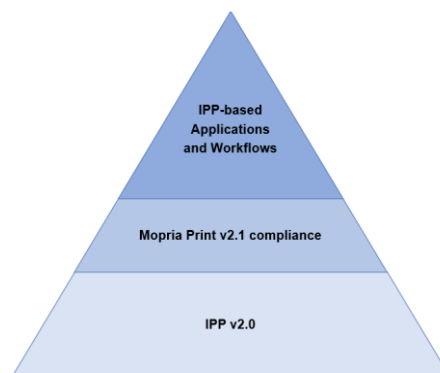
This industry compliance allows additional use cases such as driverless printing; and cloud-centric workflows such as Universal Print by Microsoft, Papercut, etc.

Benefit:

- Facilitates Fiery integration with third-party solutions.

Availability:

Cutsheet external servers	Standard
Cutsheet embedded servers	Standard
Server or client feature	Server



Compliance with Mopria Print Service

The Mopria® Print Service offers a simple and seamless way to print to any Mopria-certified printer or multi-function device. It eliminates the need to install any additional software or drivers, allowing users to easily print – regardless of the printer brand.

Fiery FS600 Pro servers are compliant with Mopria print version 2.1. This compliance optimizes the user experience and ensures interoperability with future and legacy applications in the office and light production markets.

The Mopria Print Service is supported by most printing and imaging OEMs, as well as major IT solutions providers such as Microsoft, Adobe, and Google.



[Visit the webpage](#)

Benefit:

- Optimizes printing and improves compatibility with applications for office and light production markets.

Availability:

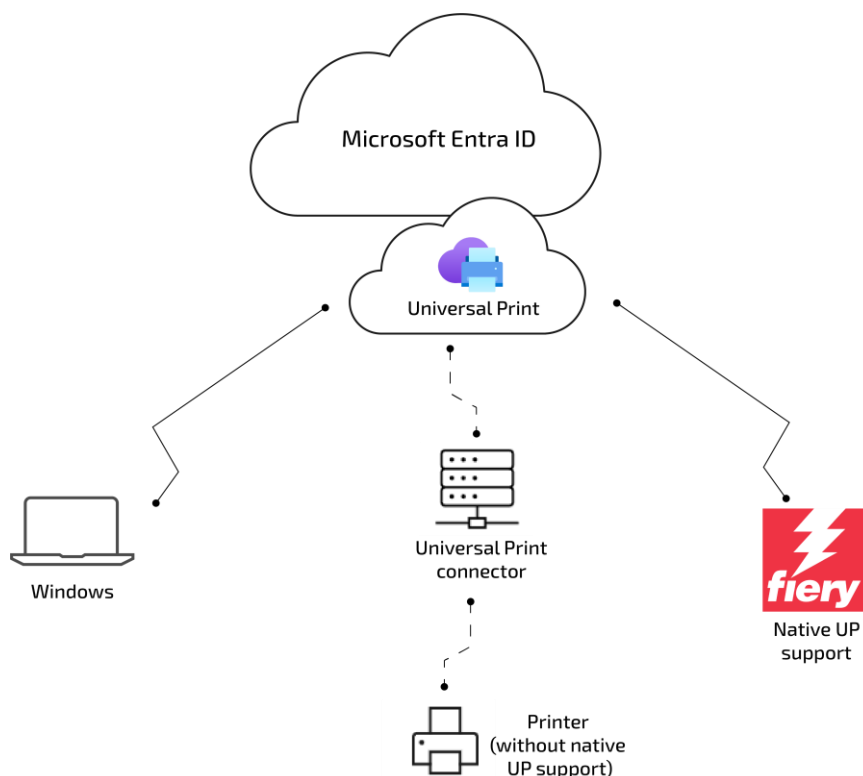
Cutsheet external servers	Standard
Cutsheet embedded servers	Standard
Server or client feature	Server

Native support for Universal Print by Microsoft

Universal Print is cloud-based print management solution by Microsoft®. Universal Print enables IT administrators to reduce their IT infrastructure costs by moving print management to the cloud. It's fully integrated with Microsoft Entra ID (Azure Active Directory) and supports single sign-on scenarios.

Universal Print addresses business demand for secure, cloud-based printing and management in remote/hybrid work environments.

Fiery FS600 Pro servers include native support for Universal Print. IT and printer administrators can seamlessly connect Fiery servers directly to their Universal Print portal without requiring additional infrastructure or connectors.



[Visit the webpage](#)

Benefits:

- Connect Fiery servers to the Universal Print Portal seamlessly and without extra infrastructure.

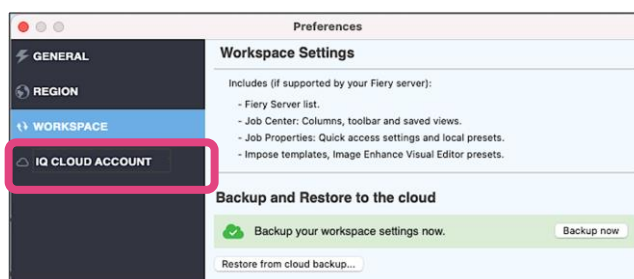


Availability:

Cutsheet external servers	Standard
Cutsheet embedded servers	Standard
Server or client feature	Server

Fiery IQ cloud services integration

Fiery Command WorkStation can take advantage of Fiery IQ™ cloud capabilities to back up and restore Command WorkStation settings. This gives users the ability to back up their settings (all of them, or just selected ones) to the cloud for easy retrieval to the same or different Command WorkStation clients, as well as to share settings with other users.



Fiery Command WorkStation uses free cloud services for:

- Backing up and restoring client settings
- Sharing client settings with other team members
- Launching Fiery IQ cloud analytics from Command WorkStation

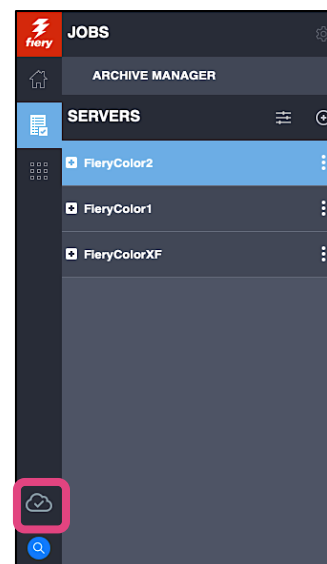
A cloud icon is available in the Command WorkStation main window that provides direct access to Fiery IQ cloud preferences. Users can sign in with their company's existing IQ account, and backup and restore their client settings or share them with other users in their team. This single account ensures that all individual users can access the same information and cloud resources.

Benefits

- Keep the same settings for all instances of Fiery Command WorkStation with a simple process.
- Easy onboarding to IQ applications.

Availability

Cutsheet external servers	Standard
Cutsheet embedded servers	Standard
Server or client feature	Client





Secure

FIPS 140-2 compliant data encryption

Fiery DFEs running Windows 10 2021 LTSC and Fiery FS600 Pro software can be configured to meet FIPS 140-2 data encryption guidelines.

A Fiery DFE in FIPS 140-2 mode uses only cryptographic algorithms validated and certified under the U.S. Federal Government's Cryptographic Algorithm Validation Program (CAVP) to encrypt data at rest and data in transit.



Benefit:

- Ensures that cryptographic modules meet high security standards established by the U.S. federal government, enhancing the security and integrity of sensitive data.

Availability:

Cutsheet external servers	Standard
Cutsheet embedded servers	Not available
Server or client feature	Server

Secure Erase (NIST 800-88 compliant)

National Institute of Standards and Technology Special Publication 800-88 Revision 1 or NIST 800-88, is the U.S. government standard for data sanitization. Its objective is to ensure that any customer data deleted from storage media becomes irretrievable.



With this feature, available for all Fiery FS600 Pro DFEs on Windows, Fiery administrators can securely erase all the actual data stored on the server to prevent data leakage when replacing or disposing the disk drives.

Benefits:

- Ensure that any data found on storage media becomes irretrievable.
- Reduce the risk of data breaches.
- Enable compliance with industry regulations.

Availability:

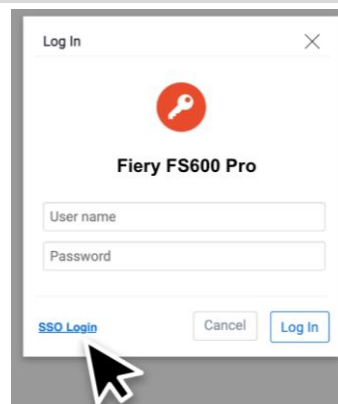
Cutsheet external servers	Standard
Cutsheet embedded servers	Not available
Server or client feature	Server

Login with SSO (Single Sign-On)

Users can now log in to a Fiery server using their existing AAD (Azure Active Directory) credentials. It supports multi-factor/two-factor authentication (MFA/2FA) workflows. For example, log in with CACs (common access cards), mobile apps, etc.

Benefits:

- Improved security
- Enhanced Fiery IT friendliness
- Support for cloud-based authentication and authorization solutions
- Meet industry compliance requirements



Availability:

Cutsheet external servers	Standard
Cutsheet embedded servers	Not available
Server or client feature	Server

Fiery High Security Kit v1.0

This new optional kit provides customers with increased protection against unauthorized access and tampering of the system and enables full compliance with industry regulations and standards, such as FIPS 140-2 and Common Criteria.

The kit includes a trusted platform module (TPM) and enables encryption of the boot drive.



Benefits:

- Increased protection against unauthorized access and tampering of the system.
- Meet industry compliance requirements.

Availability:

Cutsheet external servers	Optional for specific Fiery NX hardware platforms. Check materials to confirm availability.
Cutsheet embedded servers	Not available
Server or client feature	Server



Modified/removed functions

Removal of Sequential Print

Fiery FS600 Pro/FS600 servers no longer offer Sequential Print. This feature has been replaced by Strict Ordered Printing, first introduced in Fiery FS400 Pro/FS400.

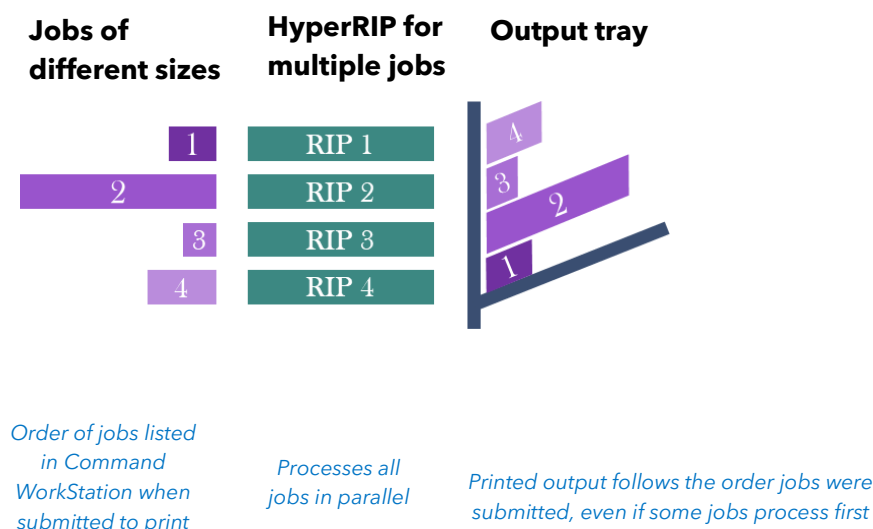
Strict Ordered Printing ensures jobs print in the order they are listed when operators select them to print from Fiery Command WorkStation. Even if one job finishes processing before a job ahead of it in the queue, the jobs will stay in the order in which they were submitted to the Print queue. It offers a predictable order of the printed output to guarantee a streamlined finishing and distribution process.

Strict Ordered Printing resolves a few limitations with Sequential Print:

- Sequential Print did not support RIP-while-print or RIP-while-spool. Each job needed to be fully RIPped before it could start printing, which slowed production.
- Sequential Print was not available for jobs already held on the Fiery server.
- In certain situations, it was still possible for jobs to print out of order.

In some cases, Strict Ordered Printing processes jobs **significantly faster** than Sequential Print.

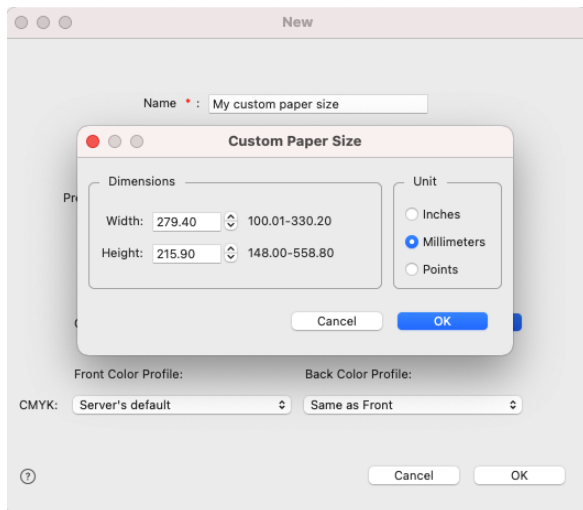
With Strict Ordered Printing, operators can use advanced job management features such as Rush Print and Print Next to override the strict order rule.





Accurate paper size conversions

Because operators can define custom page sizes in inches, millimeters, or points; we've improved the accuracy for page size conversions.



A custom paper size being added in Media/Paper Catalog

M1 mode for spot color libraries

All Fiery default spot color libraries are now based on the M1 measurement mode. This new default also applies to spot color measurements.

M0, M2, and M3-based libraries are still available for use on FS600 Pro servers.

Benefits:

- Clearer to users which measurement mode has been used for libraries.
- Measurement creation that results in more accurate matching.



Fiery Learning



Free learning resources

[Fiery Learning](#) delivers learning resources that best fit users' needs, using a variety of free, self-paced, web-based courses; videos; or hands-on, practical guides that make it easy to fit training into busy schedules.

- eLearning courses: interactive online learning sessions
- Simulation learning: learning solution that offers the opportunity to practice techniques and procedures in a realistic, immersive environment
- Express videos: short videos on key topics, delivered by Fiery subject-matter experts
- Webinars: access to recordings of World of Fiery webinars, an on-going program of educational, free webinars that feature valuable information for color professionals, and owners and managers of print businesses or in-plant/CRD operations
- How-to guides: step-by-step instructions with sample files

Fiery certification programs

In today's fast-changing world, print professionals need a convenient and affordable way to gain new skills and credentials quickly – so they can do more, be more, and take their careers to the next level. Be a step ahead of the others. Our paid certification programs will help print professionals stand out in the workplace.

Fiery Professional Certification

The Fiery Professional Certification teaches print professionals the necessary skills to optimize the performance of Fiery technology solutions. Developed by Fiery subject-matter experts, it provides the latest information on Fiery technology to develop employee skills, enhance professional development, and transform print businesses.

Fiery Expert Certification

The Fiery Expert Certification builds on the Fiery Professional Certification to develop more in-depth expertise. The expert courses help students master the advanced Fiery toolsets and learn to use the full range of features.

Fiery Technician Certification

The Fiery Technician Certification program equips service technicians with the knowledge and skills required to optimize performance and maintain Fiery technology solutions.



Ghent PDF Output Suite 5.0 Conformance Certification

Having Ghent PDF Output Suite 5.0 conformance for your Fiery Driven™ print system is not only a way to achieve PDF/X-4 standards compliance, but also a very valuable marketing tool to show your customers that they are in safe hands when it comes to their printed products.

For more information on the Fiery certification programs and to enroll, visit [this web page](#).

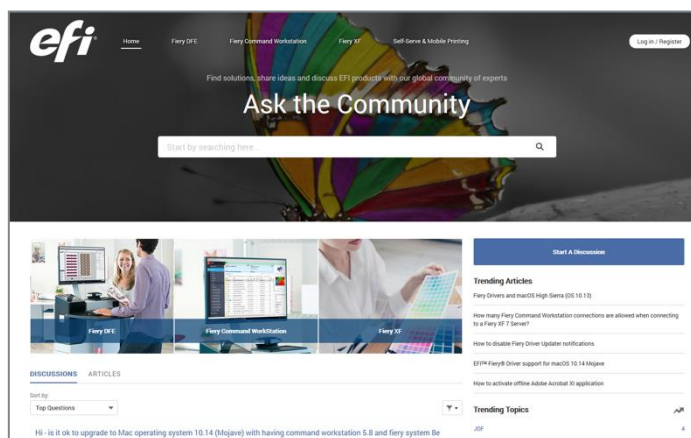


Fiery Communities

Fiery hosts a customer engagement platform, [Fiery Communities](#). Here, Fiery users have a place to find solutions, share ideas, and discuss Fiery products with our global community of experts.

Fiery Communities also offers additional great features:

- A searchable knowledge base of technical articles created by the Fiery Technical Support team, for solutions to common or known issues.
- The ability to “follow” topics that interest you, or on specific areas of focus.
- A personalized feed which is created dynamically, based on your previous activities on the site.
- The ability to select the “best” answer from multiple solutions.
- Mobile-friendly design
- Fiery Licensing Assistant, an automated chat option designed to quickly help with licensing-related questions.



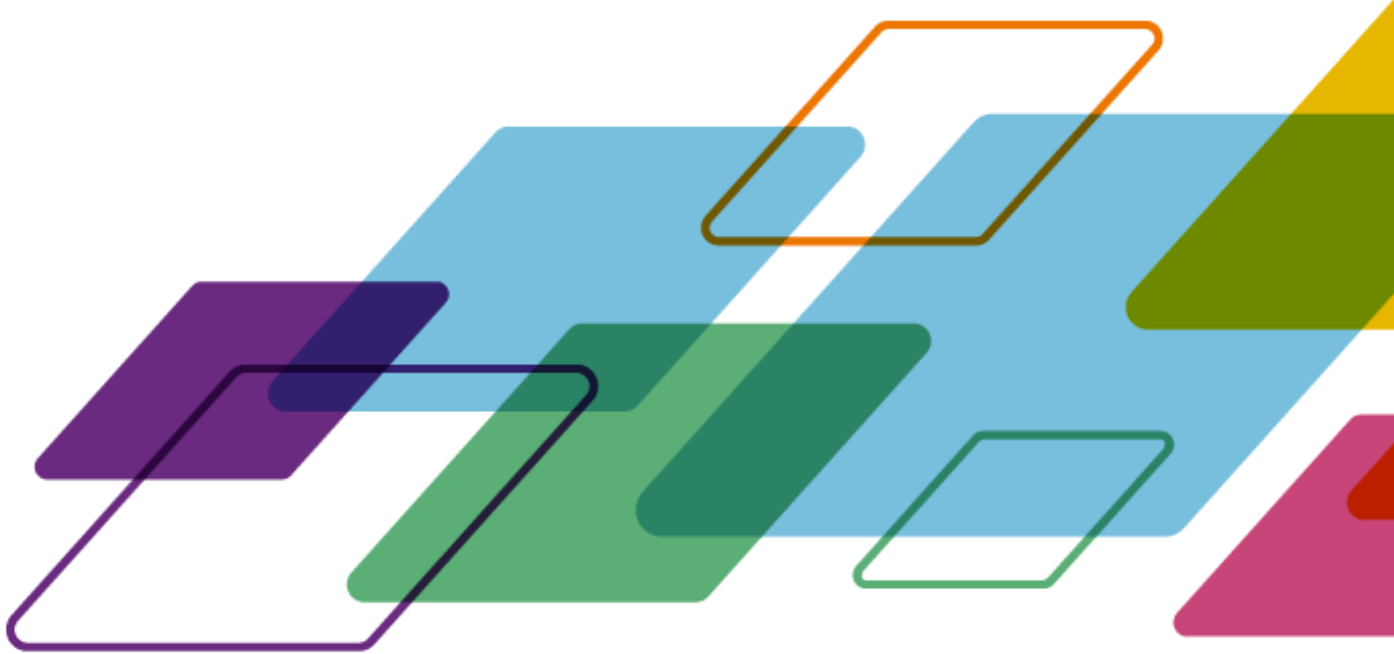
Fiery Communities landing page



Additional resources

Use this list of sales, training, and technical resources to help you broaden your knowledge of Fiery print servers, plus related products, and applications.

Fiery servers main page	fiery.com
Fiery online resources	resources.fieri.com
Explore the Fiery digital front ends sold by Fiery partners	fiery.com/partners
Fiery production solutions	solutions.fieri.com/production-solutions
Fiery Workflow Suite	fiery.com/workflow-suite
Fiery integration to third-party software	fiery.com/integration
Fiery driver downloads	download.fieri.com/drivers
Fiery Command WorkStation main page	fiery.com/cws
Fiery software free trial request	fiery.com/free-trials
Training resources at Fiery Learning	learning.fieri.com
Fiery Communities	fiery.com/communities



For more information, please visit fiery.com.

Nothing herein should be construed as a warranty in addition to the express warranty statement provided with Fiery, LLC products and services.

ColorGuard, ColorRight, Command WorkStation, ColorWise, Fiery, the Fiery logo, Fiery Compose, Fiery Driven, the Fiery Driven logo, Fiery Edge, Fiery Essential, Fiery HyperRIP, Fiery Impose, Fiery Impress, Fiery ImageViewer, Fiery Intensify, Fiery JobExpert, Fiery JobFlow, Fiery JobMaster, Fiery Prep-it, Fiery Prints, the Fiery Prints logo, Fiery TrueBrand, FreeForm, MicroPress, IQ, PrintMe, RIPChips, RIP-While-Print, Spot-On, Spot Pro, and WebTools are trademarks or registered trademarks of Fiery, LLC and/or its wholly owned subsidiaries in the U.S. and/or certain other countries. All other terms and product names may be trademarks or registered trademarks of their respective owners and are hereby acknowledged.

© 2023 FIERY, LLC. ALL RIGHTS RESERVED.

FTL_001.01.23