

# How-To:

Load Fiery Image  
Boost Preset for  
Fiery System  
10/10e and Newer



# Fiery Image Boost Preset for Fiery System 10/10e and Newer

## Overview of Fiery Image Boost Preset

The Fiery® Image Boost preset helps you produce brighter, cleaner and more pleasing images and smoother vector gradients your customers will notice. You can apply the Image Boost preset when submitting print jobs through a print driver or by using Fiery Command WorkStation® Job Properties.

Fiery Job Presets allow you to create automated job submission workflows for repetitive job settings. This reduces touch points on a job, reduces errors and speeds up submission.

## Benefits

- Produce brighter, cleaner images and smoother vector gradients your customers will notice
- Easy to install and use

## Objectives

Import Fiery Image Boost Preset to improve image quality in a print job.

## Requirements

Fiery Command WorkStation version 5.4 or above. Get the latest version from [www.efi.com/cws5](http://www.efi.com/cws5)

Fiery system software: Fiery System 10/10e, Fiery FS100/FS100 Pro or Fiery FS150/FS150 Pro

## Preparation

Install Command WorkStation on either a Windows or Macintosh client.

- Locate the Image\_Boost.fjp preset file and the sample file.  
(Sample Files: **Connect\_Alumni\_Newsletter\_LTR.pdf** or **Connect\_Alumni\_Newsletter\_A4.pdf**)



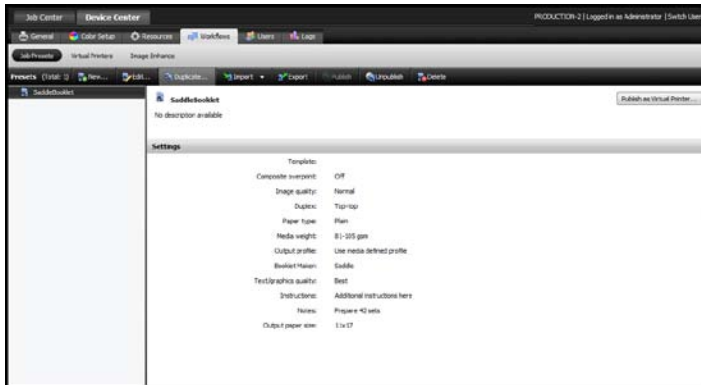
Note:

Each output device will have different procedures for configuring and printing the finished document. If needed you may consult the user documentation for the press and Fiery Server that will be used for this How-To exercise.

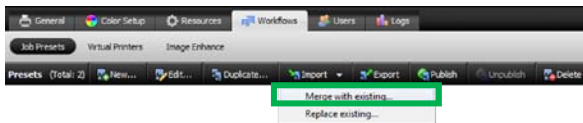
## Importing the Image Boost preset

1. Open Command WorkStation and connect to a Fiery server as an administrator.

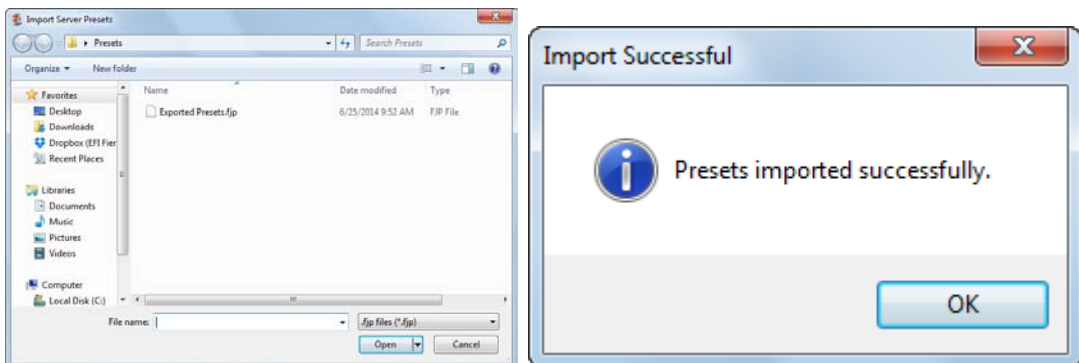
Go to the Device Center tab at the top. Under this tab, find the Workflows tab. This tab is where Job Presets are located. These Presets can be accessed from Job Properties and print drivers, and they can also be applied in workflows using Fiery Hot Folders and Virtual Printers.



2. In the Presets section select Import and select Merge with existing.

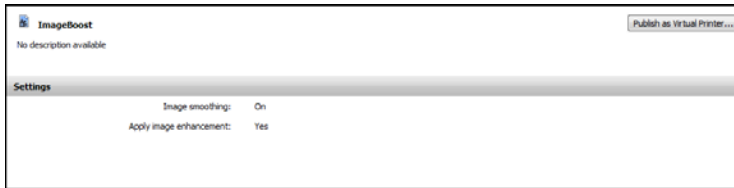


3. Browse to the location where you saved the **Fiery Image Boost** preset file and select **Open**. Click OK when the preset has been imported successfully.

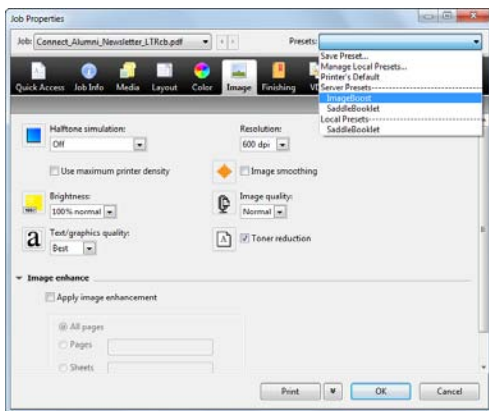


## Load Fiery Image Boost Preset for Fiery System 10/10e and Newer

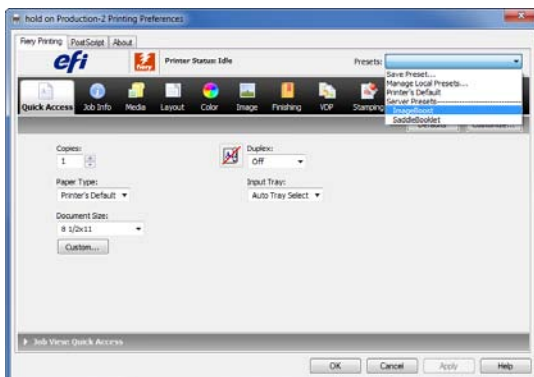
- The preset will appear in the Device Center Presets window. You can verify the functions of a preset by viewing the Settings pane.



- Your new Fiery Server preset will now appear in the Presets drop down menu in Fiery Command WorkStation Job Properties.



The new preset will also be available in the Fiery print driver for clients connected to the Fiery server.



### Note:

Always apply the Fiery Image Boost preset *first* - before any other setting. If a preset is applied after making other custom settings in the Job Properties, the Preset will replace them with just the preset job properties.

If you want to create an inclusive preset of both Fiery Image Boost and other print settings, then select the preset first, make the other custom settings, and then save a new preset.

## Steps to Verify and Use the Fiery Image Boost Preset From the Fiery Print Driver

1. Open **Connect\_Alumni\_Newsletter\_LTR.pdf** or **Connect\_Alumni\_Newsletter\_A4.pdf** in Adobe Acrobat or Acrobat Reader. (NOTE: You must have the latest Fiery Driver installed)
2. Select **File, Print** and select **Properties**.
3. Print the file using default settings.
4. Select **File, Print** and select **Properties**.
5. Using the Presets dropdown menu, select the Fiery Image Boost preset.
6. Make any additional job property changes desired such as media or finishing.
7. Print the file.
8. Review the printed output and observe the improvements made with the preset applied.



Without Fiery Image Boost



With Fiery Image Boost

## From Fiery Command WorkStation

1. Import the sample file **Connect\_Alumni\_Newsletter\_LTR.pdf** or **Connect\_Alumni\_Newsletter\_A4.pdf** into the Command Workstation Held queue using **File, Import Job** or Drag and Drop.
2. Select the file in the Held queue, right click the job and select **Properties** or choose **Properties** from the **Actions** menu.
3. Print and Hold the file using default settings.
4. Select the file in the Held queue, right click the job and select **Properties** or choose **Properties** from the **Actions** menu.
5. Using the Presets dropdown menu, select the Fiery Image Boost Preset.
6. Print the file with the Fiery Image Boost Preset applied.
7. Review the printed output and observe the improvements made with the Preset applied.

Alternately, you can choose to use the Process and Hold feature in Command WorkStation for the steps above and use Fiery Preview or Fiery ImageViewer to compare the results.



Without Fiery Image Boost



With Fiery Image Boost

## Load Fiery Image Boost Preset for Fiery System 10/10e and Newer





## EFI fuels success.

From Fiery to super wide inkjet, from the lowest cost per label to the most automated business processes, EFI has everything your company needs to succeed. Visit [www.efi.com](http://www.efi.com) or call 650-357-3500 for more information.



The APPS logo, AutoCal, Auto-Count, Balance, Best, the Best logo, BESTColor, BioVu, BioWare, ColorPASS, Colorproof, ColorWise, Command WorkStation, CopyNet, Cretachrom, Cretaprint, the Cretaprint logo, Cretaprinter, Cretaroller, DockNet, Digital StoreFront, DocBuilder, DocBuilder Pro, DocStream, DSFdesign Studio, Dynamic Wedge, EDOX, EFI, the EFI logo, Electronics For Imaging, Entrac, EPCount, EPPhoto, EPRegister, EPStatus, Estimate, ExpressPay, Fabrivid, Fast-4, Fiery, the Fiery logo, Fiery Driven, the Fiery Driven logo, Fiery JobFlow, Fiery JobMaster, Fiery Link, Fiery Prints, the Fiery Prints logo, Fiery Spark, FreeForm, Hagen, Inkintensity, Inkware, Jetrion, the Jetrion logo, LapNet, Logic, MiniNet, Monarch, MicroPress, OneFlow, Pace, PhotoXposure, Printcafe, PressVu, PrinterSite, PrintFlow, PrintMe, the PrintMe logo, PrintSmith, PrintSmith Site, Printstream, Print to Win, Prograph, PSI, PSI Flexo, Radius, Rastek, the Rastek logo, Remoteproof, RIPchips, RIP-While-Print, Screenproof, SendMe, Sincolor, Splash, Spot-On, TrackNet, UltraPress, Ultraflex, UltraVu, UV Series 50, VisualCal, VUTEK, the VUTEK logo, and WebTools are trademarks of Electronics For Imaging, Inc. and/or its wholly owned subsidiaries in the U.S. and/or certain other countries.