



Fiery® JobExpert™ and PDF Processing Kit

Fiery FS500 and newer servers

Intelligent automation,
native PDF and VDP processing

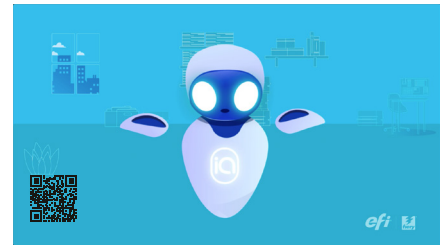


POWERED BY
Adobe PDF Print Engine



Your built-in print expert

Fiery JobExpert automatically chooses the optimal and most efficient way to process each job to achieve the highest print quality. It analyzes each PDF in detail and sets the best job settings for color management, image quality, VDP, and engine specific properties.



[Watch the video](#)

Benefits of using Fiery JobExpert

- Produce high quality output on the first try
- Optimizes processing times
- Enables less-experienced operators to run jobs correctly
- Reduces setup time
- Cuts waste

Without Fiery JobExpert

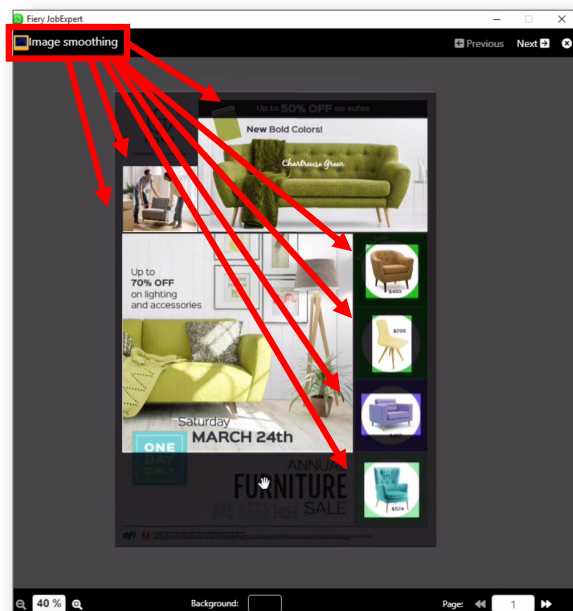
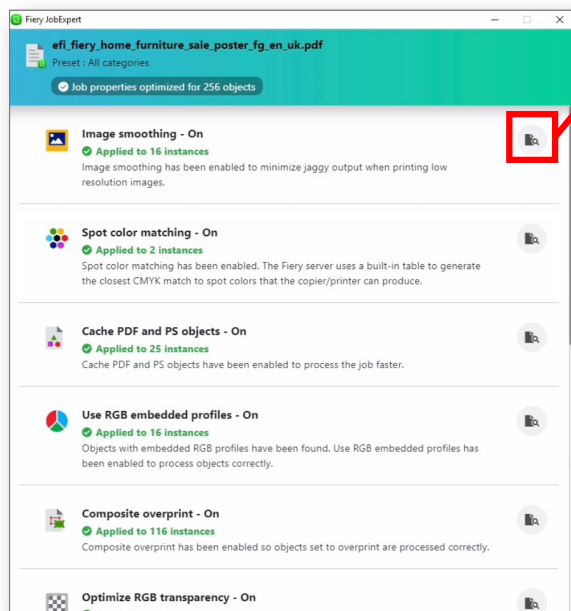


With Fiery JobExpert



Visualize optimizations

The Fiery JobExpert Report shows a summary and explanation of the settings applied for a job. The preview functionality can be used to find the elements that required specific settings to be enabled by JobExpert.



Get a perfect PDF workflow

Adobe PDF Print Engine ensures consistent, predictable output in an end-to-end Adobe workflow.



What is Adobe PDF Print Engine?

EFI and Adobe have partnered to integrate the PDF Print Engine rendering technology with the Fiery server. By combining Adobe interpreter technology with a proprietary EFI software rendering engine, the Fiery server produces reliable reproduction of the original PDF, ensuring that the final product matches designer and customer expectations.



When should you consider Adobe PDF Print Engine?

PDF is the world's de facto standard for electronic documents. Consider the following scenarios to determine if this option is right for your business.

- Implement an end-to-end native PDF workflow
- Receive jobs from document creators that used Adobe Creative Cloud applications like Photoshop, Illustrator, or InDesign.
- Deal with PDF files that are complex or very large in size
- Run PDF files that may have multiple layers or transparencies



Typical applications for Adobe PDF Print Engine



Graphically rich content



Brochures



Annual reports



Books



Direct mail



Signage

Add new VDP capabilities

Support for **PDF/VT-1** brings the benefits of a PDF workflow to variable data printing (VDP), which helps print providers extend their print offerings and increase production efficiency with capabilities such as late-stage exchange of critical variable content. The system processes PDF/VT files by detecting records defined in the PDF/VT job and caching reusable XObjects, which enables the Fiery server to RIP repeated elements only once, then cache them.



How to buy

The **Fiery JobExpert** and **PDF Processing Kit** is available to purchase from Fiery resellers for customers with **embedded Fiery servers running FS500 or newer software**. For some servers, this kit may also include an additional 4GB of RAM needed to bring the total server RAM to 8GB.

EFI™ is a global technology company, leading the worldwide transformation from analog to digital imaging. We are passionate about driving customers' business growth with a scalable portfolio of products, solutions, services, and world-class partnerships for the manufacturing of signage, packaging, textiles, ceramic tiles, building materials, commercial print, and personalized documents with a wide range of printers, inks, digital front ends, and workflow software. They work together to increase profits, cut costs, improve productivity, and optimize efficiency – job after job, year after year. Learn more at www.efi.com.



Nothing herein should be construed as a warranty in addition to the express warranty statement provided with EFI products and services.

ColorGuard, ColorRight, Command WorkStation, ColorWise, EFI, the EFI logo, Electronics For Imaging, EFI Fiery, Fiery, the Fiery logo, Fiery Compose, Fiery Driven, the Fiery Driven logo, Fiery Edge, Fiery Essential, Fiery HyperRIP, Fiery Impose, Fiery Impress, Fiery ImageViewer, Fiery Intensify, Fiery JobExpert, Fiery JobFlow, Fiery JobMaster, Fiery Prep-it, Fiery Prints, the Fiery Prints logo, Fiery TrueBrand, FreeForm, MicroPress, IQ, PrintMe, RIPChips, RIP-While-Print, Spot-On, Spot Pro, and WebTools are trademarks or registered trademarks of Electronics For Imaging, Inc. and/or its wholly owned subsidiaries in the U.S. and/or certain other countries. All other terms and product names may be trademarks or registered trademarks of their respective owners and are hereby acknowledged.