



New Features in Fiery System 10





Page left intentionally blank



Contents

Introduction	4
Target Markets	4
Target Applications	4
Performance	5
Color	5
Usability	5
Integration	6
New and Enhanced Features Table	7
Performance	8
VDP Enhancements	8
Job Presets	15
Modify Default Queues	17
Auto Preflight	18
Proof Print	20
Pad Printing	21
Color	22
Image Enhance Visual Editor	22
New Calibrator Features	24
Fiery Color Profiler Suite 3.0 Integration	35
Fiery Spot-On Enhancements	39
PANTONE PLUS SERIES libraries	40
Optimize RGB Transparency	40
Paper Simulation with ES-1000	41
Fiery Graphic Arts Package Standard with Fiery External Servers	41
Fiery ImageViewer for Black and White	42
Usability	44
Fiery Command WorkStation 5.3	44
Fiery SeeQuence Suite Enhancements	46
Integration	64
Microsoft Windows® 7 Professional for Embedded Systems (FES) x32/x64	64
Paper Catalog Enhancements	64
Set Page Device Support	65
Sequential Printing	68
Direct Mobile Printing	70



Introduction

The Fiery® System 10 is the most innovative, scalable and integrated server solution for print engines, ensuring customers get the highest return on their investment. Some important new features include:

- Fiery Command WorkStation 5.3 – The latest release of the print job management interface for Fiery systems includes many new features such as the Image Enhance Visual Editor plug-in for on-the-fly image corrections and User Defined Finished Size for increased operator control over imposition settings.
- Mixed Finishing Sets — Now available in Fiery SeeQuence Compose, this allows users to specify different finishing options among different subsets. It streamlines and automates the assembly process to produce fully finished jobs.
- New Fiery Calibrator tools and UI — With Fiery System 10, the calibration process has become extremely simple with enhanced step-by-step user interface, automatic calibration management tool, job-based calibration and more.
- VDP Enhancements — Fiery System 10 provides better usability for Fiery FreeForm and VDP Resource Manager, as well as PostScript optimization.
- PDF/VT-1 Support — Fiery System 10 now supports PDF/VT for both CPSI and APPE workflows.
- Direct Mobile Printing — All System 10 Fiery servers provide direct mobile printing for Apple iOS devices with no additional software or drivers necessary.

Target Markets

Production environments include: commercial printers, digital printers, quick printers, print-for-pay shops, in-plant commercial reprographics departments (CRDs) and corporate office markets. Emerging markets include marketing service providers (MSPs) and photobook printers.

Target Applications

- Marketing materials: brochures, catalogs, stationery, direct mail and cards.
- Photo publishing: photo books, postcards and calendars.
- Corporate: newsletters, presentations and proposals.
- Book publishing: books and manuals.
- Packaging: boxes, envelopes and proofs.

- 
- VDP: direct mail, catalogs and transactional promotional material.

Market-leading Fiery servers excel in the following four categories:

Performance

Fiery Systems Maximize Productivity and Automate Workflows

New features, such as Server Presets, Auto Preflight, and Proof Print, further automate workflows, minimize clicks, and increase productivity. The new variable data printing (VDP) enhancements boost performance and increase workflow flexibility with support of PDF/ VT-1 format.

Combined with its intuitive operation, the high-performance server empowers automated workflows to deliver completely finished jobs faster. Customers can meet their tight turnaround times and do more work by automating time-consuming manual tasks and by removing bottlenecks that slow down production.

Color

Fiery Systems Deliver Accurate and Consistent Color Across Applications and Platforms

Now customers can take real-time image editing to the next level with Image Enhance Visual Editor. Service providers can increase business and revenues by offering image correction services. The calibration process has been dramatically simplified and effectiveness is increased with job-based calibration and a calibration guard.

This makes the Fiery server ideal for producing marketing materials, packaging and photo publishing applications. Fiery servers produce high-value, color intensive output with such high quality results that it amazes even the toughest customers.

The integrated calibration process includes job-based calibration and customized calibration status alerts to guarantee even higher color consistency at all times.

Usability

Fiery Systems Deliver Ease of Use

The latest Fiery Command WorkStation® 5.3 includes many new features. Fiery SeeSequence Compose provides Mixed Finishing Sets to automate document production with multiple finishing requirements in a set. Fiery SeeSequence Impose supports user-defined trim and bleed definitions, so the operator has more control over imposition settings.

Fiery technology also adapts to anyone's skill level. Job management and preparation are faster and more efficient, regardless of the jobs' complexity, using award-winning Fiery Command WorkStation and Fiery SeeSequence Suite.



Integration

Fiery Systems Deliver Seamless Integration

Fiery technology offers a high return on investment because the open platform technology integrates seamlessly with most EFI™ and third-party vendor solutions worldwide.

Fiery JDF technology serves as a gateway to other EFI solutions and Fiery-enabled solutions, so users can move job details — such as job numbers, descriptions, media, production counts and start and stop times — through their systems faster and more efficiently.

Sequential Print enables Fiery servers to integrate into workflows that require jobs to be finished based on the order in which they were submitted. System 10 automatically prints Set Page Device (SPD) embedded files from specialized applications that require mixed media, eliminating the need for operator intervention.

By supporting the Adobe® PDF Print Engine, Fiery servers also offer native PDF workflows, allowing users to improve the end-to-end consistency and flexibility of their printed output.



New and Enhanced Features Table

<u>Performance</u>	<u>Color/Image Quality</u>	<u>Usability</u>	<u>Integration</u>
<u>VDP Enhancements</u>	<u>Image Enhance Visual Editor</u>	<u>Fiery Command WorkStation 5.3</u>	<u>Microsoft Windows 7 Professional FES</u>
<u>Server Job Presets</u>	<u>New Calibrator Features</u>	<u>Fiery SeeSequence Suite Enhancements</u>	<u>Paper Catalog Enhancements</u>
<u>Modify Default Queues</u>	<u>Fiery Color Profiler Suite Integration</u>	<u>Fiery SeeSequence Compose Enhancements</u>	<u>Sequential Printing</u>
<u>Auto Preflight for Hot Folders and Virtual Printers</u>	<u>Fiery Spot-On Enhancements</u>	<u>Fiery SeeSequence Impose Enhancements</u>	<u>SPD Support</u>
<u>Proof Print</u>	<u>PANTONE® PLUS SERIES libraries</u>	<u>Job Properties Print Actions</u>	<u>Direct Mobile Printing</u>
<u>Pad Printing</u>	<u>Optimize RGB Transparency</u>	<u>Serviceability Improvements</u>	
	<u>Paper Simulation with ES-1000</u>	<u>Quick Access Tab Reminder</u>	
	<u>Fiery Graphic Arts Package Standard with Server</u>	<u>Improved International Support</u>	
	<u>Fiery ImageViewer for Black and White</u>	<u>Custom Job Log Export</u>	
		<u>Save Password and Auto Login</u>	



Performance

VDP Enhancements

The Fiery System 10 VDP enhancements include:

- Enhanced FreeForm
- Enhanced VDP Resource Manager
- PDF/VT-1 support
- PostScript optimization

Enhanced FreeForm

Fiery FreeForm is an exclusive, built-in and very easy to use VDP file format. FreeForm supports a wide variety of source applications without the need for a third-party VDP composition tool. With FreeForm, customers can enter the market for producing personalized marketing campaigns and support a multitude of customer requirements with ease.

FreeForm operates at a page level (as opposed to PPML which is object-based) and each record in a FreeForm job is defined by the page length of the Freeform master document. FreeForm maps the pages from the variable document to the record length defined by the FreeForm master until all the variable document pages are used.

Prior to System 10, if a page required no variable elements, and there was not an exact one-to-one correspondence between the number of pages in the variable document and the number of pages in the master document, the user had to add blank pages to the source document to make sure mapping was handled properly.

As an example, imagine a company needs to distribute a personalized newsletter to their customers. This newsletter has four pages and only two of those pages — the front cover with the name of the customer and a personalized image, and the back cover with the mailing address and a custom ad — contain variable information.

Master Pages



Variable Pages



Figure 1: Personalized four-page newsletter containing variable document with only two variable pages

In System 10, FreeForm has been enhanced to give the user the flexibility to control the mapping between the variable and master documents. This provides several benefits. First, instead of adding blanks in the source variable document, the user can **map** a blank page to a master page. Second, the user can pick and choose which master page a given variable page uses. And finally, the user can define the length of the record, instead of having to use the entire length of the master document.

Enhanced FreeForm is supported in Command WorkStation 5.3 Job Properties, Virtual Printers and Presets, Hot Folders plus Windows and Mac drivers.

Users can choose Enhanced FreeForm from the Job Properties VDP tab by selecting a master document from the Use Master dropdown menu, then checking the box "Enable Enhanced FreeForm" and clicking the "Define Mapping" button.

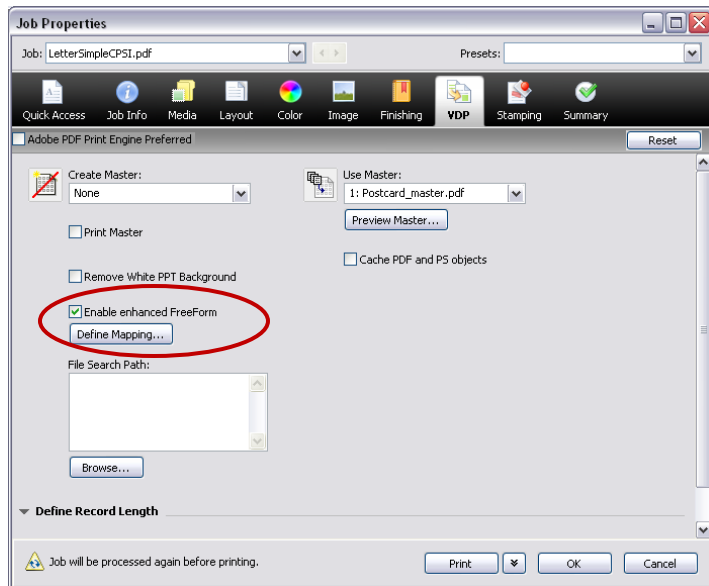


Figure 2: Users can choose Enhanced FreeForm from the Job Properties VDP tab

To define mapping, make the following selections:

- Variable pages per record: define the number of pages in the Variable Document used in each record.
- Total pages per record to be finished: define the total number of pages of the finished record.

Using the Define Mapping table, users can associate the variable pages with the corresponding page of the master document. In the example below, we are only using two pages of a four-page master document. Since we are using only two variable pages and there isn't a one-to-one variable-to-master correspondence, FreeForm has automatically created blank variable pages. Using the up and down arrows, the user can map which master page has no variable data.

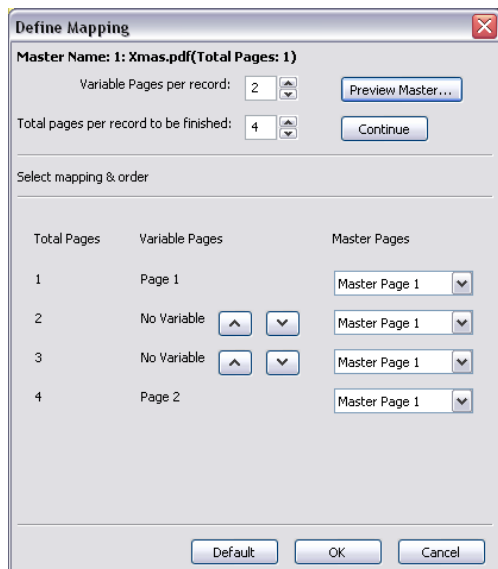


Figure 3: Using the Define Mapping table, users can associate the variable pages with the corresponding page of the master document

Fiery Advantage

- Powerful built-in VDP solution software with every Fiery server and controller.
- FreeForm is the third most popular VDP language (source: IDC).

Customer Benefits

- Enhanced FreeForm simplifies creating and using VDP documents by allowing users to map variable documents to master documents without modifying the source documents.
- Enhanced FreeForm offers the flexibility to pick only a subset of pages from a master document for use with the variable record in any order.
- Print shops can print jobs without returning to the customer to revise the variable document.

VDP Resource Manager Enhancements

The Fiery VDP Resource Manager allows repeatable elements (source and cached) to be stored and managed for future use. These resources are listed in the VDP Resource Manager tab of the Device Center Resource tab, under each format supported by VDP. Before System 10, the stored objects appeared only as a list and it was difficult to determine what the resources were, simply based on the name.

The VDP Resource Manager in Fiery System 10 provides the following enhancements:

- A choice of a list view or a thumbnail view. The thumbnail view provides a visual illustration of resources.



customers increase production efficiency with capabilities such as late-stage exchange of critical variable content.

The Fiery System 10 processes PDF/VT files the same way it handles other VDP files, by detecting the records defined in the PDF/VT job and caching reusable X-Objects in the job. The Fiery server displays an icon for PDF/VT jobs shown in the Fiery Command WorkStation.

Held (16)		Printed (10)		Archived (0)		
Job Title	Pages/Re Records	Pages	Copies	Document S	Date/Time	User
RealEstate3-106p_2_vt.pdf	2 54	108	1	12x18	Today 11:34:48 PM	Admini
rem_p192_2_vt.pdf	2 35	70	1	SRA3	Today 11:34:48 PM	Admini
SamsTown_2_vt.pdf	2 1037	2074	1	12x18	Today 11:34:48 PM	Admini
Pete1000LiveNoMetadata_VT1.pdf	2-3 1000	2276	1	101.60...	Today 11:34:44 PM	Admini
RealEstate1KPDFVT1.pdf	2 1000	2000	1	101.60...	Today 11:34:44 PM	Admini
NewTransp-PlanB...ned_VL_VT1.pdf	3-4 20	65	1	101.60...	Today 11:34:43 PM	Admini
04-gmc_sample-DPM.pdf	1-5 4	14	1	A4	Today 11:34:39 PM	Admini
MaiMergeVariable...1000rec.pdf.pdf		4000	1	8 1/2x11	Today 9:06:38 PM	Admini
MaiMergeVariable2Page-Record.pdf		800	1	8 1/2x11	Today 9:06:38 PM	Admini

Figure 5: The format icon, as well as the quantity of records and pages per record, identifies PDF/VT jobs in Command WorkStation

Additional background information about PDF/VT

PDF/VT uses the Portable Document Format (PDF) based on the existing ISO PDF/X-4 and PDF/X-5 standards. It provides for the specification of document structure and layout, content and interaction of graphical objects in an imaging model supporting live transparency, layers and full ICC-based color management. The standard provides for fully self-contained PDF/VT files (blind exchange for maximum reliability), as well as for PDF/VT files that reference external graphic objects and profiles. The rich metadata model enables robust, granular and dynamic production controls.

PDF/VT will enable high-performance rendering of graphically rich content for printing on high-speed digital presses by caching repeated text and graphics. A significant number of products that will create or consume PDF/VT are currently in active development, and will likely be introduced in the near future.

http://www.iso.org/iso/catalogue_detail.htm?csnumber=46428

<http://whattheythink.com/news/46831-new-iso-pdfvt-standard-improve-vdp-format/>

<http://www.pdf-tools.com/public/downloads/whitepapers/Whitepaper-PDFVT-Standard-ISO-16612-2-EN.pdf>

Fiery Advantage

- Fiery System 10 fully supports the new PDF/VT file format.
- EFI has a long-standing commitment to supporting industry standards.

Customer Benefits

- Workflows based on PDF/VT will deliver all the well-known benefits of PDF print production for VDP jobs. By folding seamlessly into existing PDF-based prepress operations, PDF/VT enables a single common PDF print production workflow for all job types.
- Increases productivity with support of user's existing workflow.

Processing Optimization for PDF and PostScript VDP Files

Some customers are still using PDF or PostScript (PS) formats for creating VDP jobs. PDF uses X-Objects and PostScript uses Forms to convey information about repeatable elements. Prior to System 10, Fiery servers supported the PDF X-Objects. Now with Fiery System 10, Fiery servers also support PostScript files with Forms. Users could gain a huge performance boost by using the information from PDF X-Objects and PostScript Forms to RIP the repeatable elements only once and then storing (caching) them. This saves time by not RIPing the repeatable elements over and over again for each page.

To enable this processing optimization for PDF and PS VDP files, check the “Cache PDF and PS objects” box in the VDP tab of Job Properties. This feature is available in both the CPSI and APPE processing paths.

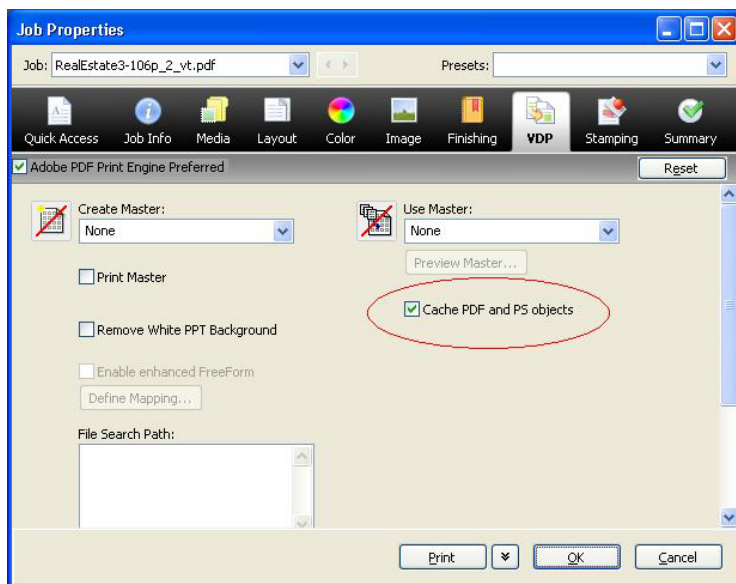


Figure 6: “Cache PDF and PS objects” box in the VDP tab of Job Properties

Customer Benefits

- Increases speed and performance when processing PDF and PostScript format files in VDP applications.



Job Presets

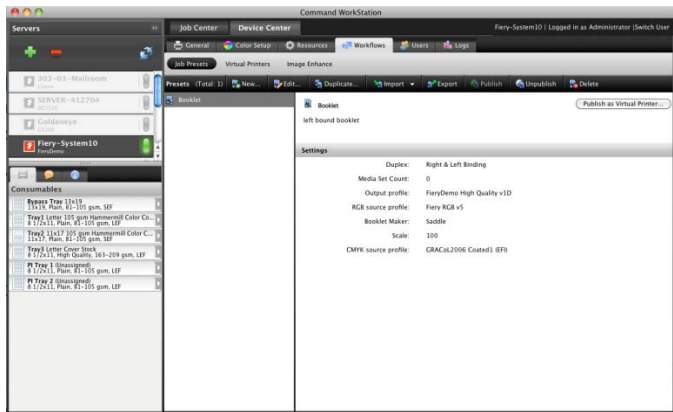
The Fiery System 10 Job Preset enhancements include:

- Server Job Presets
- Import and export Job Presets

Server Job Presets

Server Job Presets allow the administrator to save commonly used Job Properties centrally. They can then share these presets with all users of the Fiery server through all workflows such as Virtual Printers, Hot Folders, Job Properties and Print Drivers.

Previously, users could create local Job Presets, which were only available for use locally on the user's workstation. Now administrators can create and share server presets with everyone to save users' time when submitting jobs. Server Job Presets automate selecting and using Job Properties for commonly used applications, saving time and maximizing productivity.



Administrators can save, edit, publish and delete Server Presets from the Command WorkStation Device Center. They can also create server Presets from within Job Properties in Command WorkStation.

It's easy to create server Job Presets by providing a name and description.

Figure 7: Save, edit, publish and delete Server Presets from the Command WorkStation Device Center

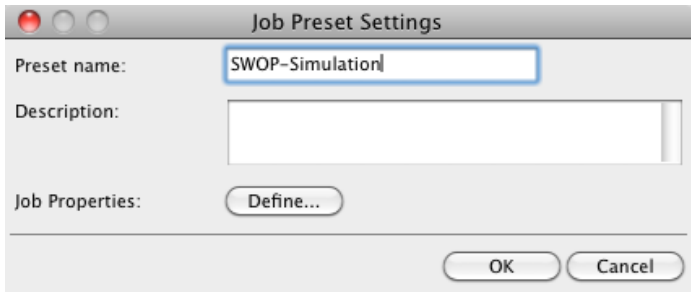


Figure 8: It's easy to create server Job Presets by providing a name and description.

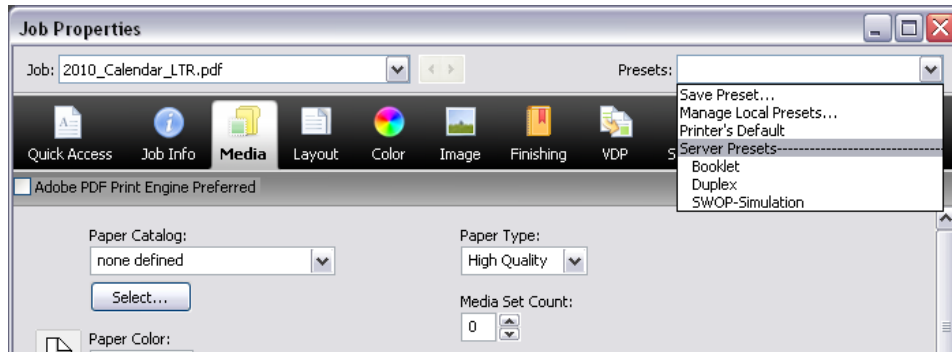


Figure 9: Select Job Preset from Job Properties

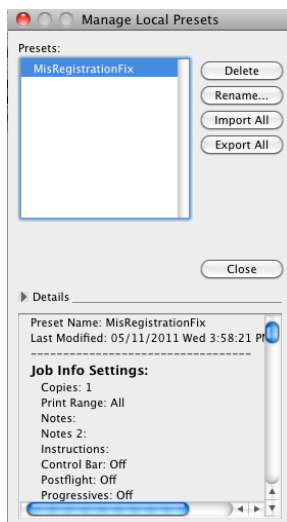
Fiery Advantage

- Fiery servers are the only RIP that offers administrator defined presets that can be used by any user through Job Properties, Hot Folders, Fiery Driver and Virtual Printers.

Customer Benefits

- Saves time, reduces errors and increases productivity by eliminating the need to select print options every time.
- Allows all users to access commonly used settings in all Fiery workflows.
- Lets administrators save and manage the most commonly used settings once and then publish them easily as Virtual Printers and Hot Folders.

Import and Export Job Presets



Another new feature is the ability to import and export both server and local Job Presets. Local Job Presets can be exported and shared between users. Only administrators can manage server presets.

Figure 10: Users can export and import Server Job Presets

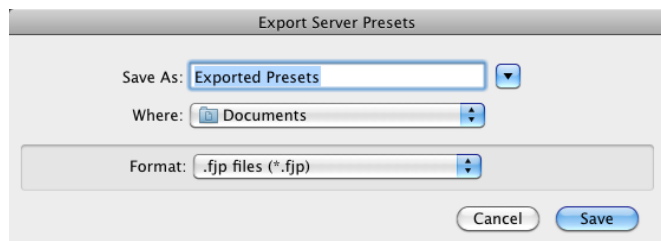
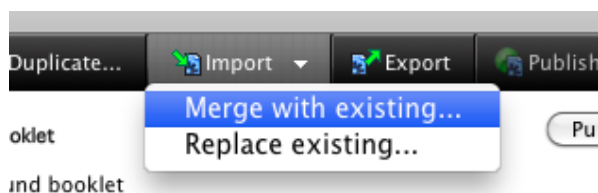


Figure 11: Exporting Server Job Presets

Server Job Presets can be exported and imported so they can be shared with other Fiery servers of the same model. This is a big time savings when trying to make multiple Fiery servers behave the same way.



Server Presets can be imported to “Merge with existing” — which adds a “-1” to an existing server preset with the same name — or “Replace existing” that will overwrite an existing server preset with the same name.

Figure 12: Merge or overwrite existing presets

Customer Benefits

- Share and back up local Job Presets for safekeeping.
- Easily and quickly make Server Job Presets available on multiple Fiery servers.
- Create automated workflows for any repetitive task and reduce number of times a job needs to be touched during printing.
- Provide pervasive availability of presets throughout a Fiery workflow.

Modify Default Queues

Customers frequently ask for a way to customize the default Job Properties of the Fiery server, so they can set options like Duplex as always on. Fiery System 10 provides the ability to change the default Job Properties of the Print and Hold Queues.

Customers can do this through the Edit function in the Virtual Printers panel in the Command WorkStation Device Center. Users may assign any function available in Job Properties to the Hold or Print Queues, and the lock the settings to prevent changes.

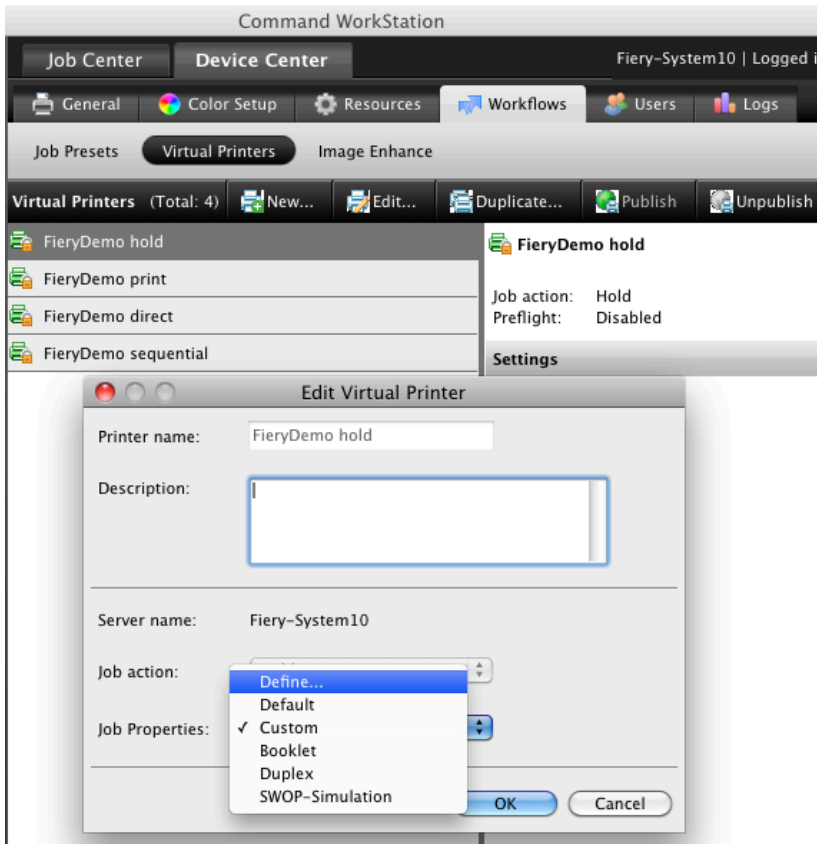


Figure 13: Change the default Job Properties of the Print and Hold Queues through the Edit function in the Virtual Printers panel

Customer Benefits

- Allows the administrator to define the default Job Properties of the Fiery server, increasing workflow efficiencies and productivity.

Auto Preflight

Prior to System 10, the operator was able to Preflight individual jobs they thought might have content problems such as missing fonts and low-resolution images that would cause the file to print incorrectly. Now, System 10 can automatically apply Preflight to any jobs submitted to the Fiery server using Hot Folders and Virtual Printers, and check files before processing. Files that fail the Preflight can be routed to the Hold Queue for an operator to check before printing. Automatically preflighting jobs saves time and increases productivity. Rerouting incorrect files before printing saves resources and money. Auto Preflight enhances the Preflight feature of the Fiery Graphic Arts Package, Premium Edition by making it automatic through Hot Folders and Virtual Printers.

Operators enable Auto Preflight when setting up Hot Folders and Virtual Printers by checking the Preflight box. The administrator can also define what constitutes a warning error and what to do with jobs that have these



errors. For example, they can be moved to the Hold Queue — preventing them from printing and wasting materials.

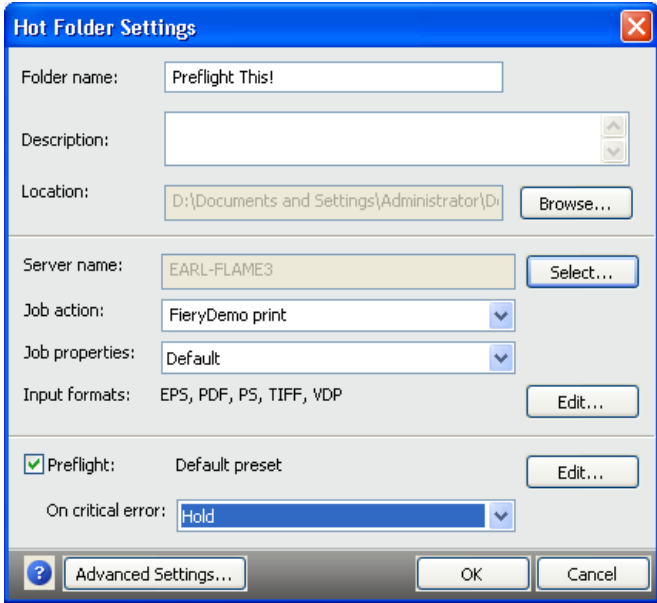


Figure 14: Enable Auto Preflight when setting up Hot Folders and Virtual Printers

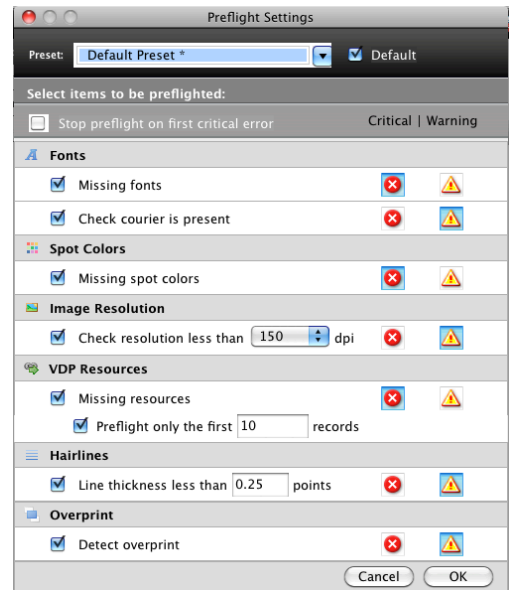


Figure 15: Customize the warning error tolerances in Preflight Settings

Customer Benefits

- Automatic Preflight can check all jobs before printing.
- Automatically preflighting jobs saves time and increases productivity.

- Operators make sure that all jobs arriving at the Fiery server are checked to minimize waste.
- Rerouting incorrect files from printing saves resources and money.

Proof Print

Proof Print, new on Command WorkStation 5.3, allows users to produce a single copy of any job in the Hold or Print Queue of the Fiery server with just one mouse click

Printing a Proof Print is quick and easy. Users don't need to open the job in Job Properties, modify the job ticket or change the copy count in the job to print a copy for proofing.

Targeted to Command WorkStation users, the Proof Print feature is particularly powerful in the Hot Folders workflow because Proof Print can be selected as a Job Action when setting up Hot Folders. After the Proof Print prints, the job moves into the Hold Queue. It can then be released for printing for the full copy count.

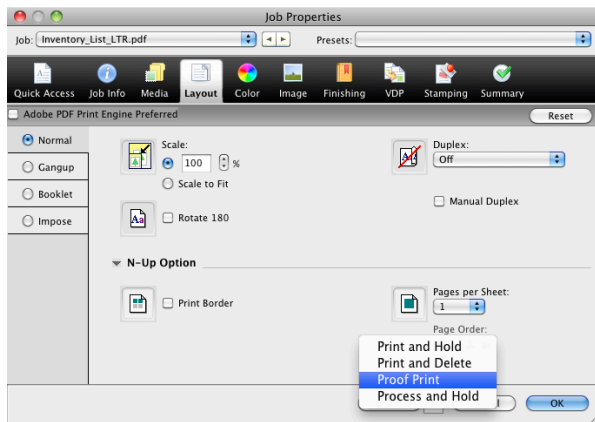


Figure 16: Request Proof Print from Job Properties

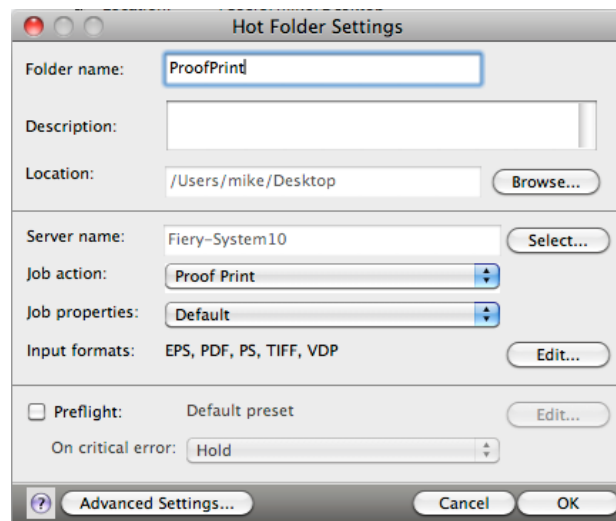



Figure 17: Request Proof Print from Hot Folders



Customers can even use Proof Print with VDP jobs. It prints one copy of the contents of the first record. If the VDP job wasn't RIPped, the raster is removed once Proof Print is completed, returning the job to the Hold Queue.

In the case of VDP imposed jobs, Proof Print prints a set associated with record number 1, printing all sheets that contain the first record.

Customer Benefits

- Saves time and increases productivity. Users and operators can check the Proof Print at the printer and release the job to be printed for the actual copy count, without modifying the copy count.

Pad Printing

Pads or notepad applications have an unlimited number of uses including memo or message pads, forms and personalized notepads as promotional advertising material.

The Fiery server can automate the production of pads with this new feature. Pad Printing minimizes manual collation of the printed output and makes it possible to produce large and small projects with as many sheets as you wish and as many sizes. From tiny pocket notepads to large desktop calendars, Pad Printing lets you quickly and easily create pads with any number of pages.

Turn on Pad printing by checking the box in the Pad Printing section of the Finishing Tab in Job Properties. Select the number of pads you want to print by changing the "Number of pads." You will have to select "Cycles Per Pad" to set the number of times a job repeats within a pad. For example, if you have a job with a 4-page form you want to repeat 100 times. "Offset pad" will automatically offset each pad for easy assembly. "Add back cover" allows you to select a tray containing the desired media be used for the back of each pad.

Customer Benefits

- Print additional applications such as notepads, prescription pads, receipt books, rebate pads or entry forms to optimize the use of existing print devices.
- There's no need to manually calculate the number of copies by multiplying the number of pages in a job by the number of jobs per pad. The Pad Printing feature will automatically calculate that for you, saving time and preventing mistakes.
- Save time separating pads and manually adding back covers by using "Offset pad" and "Add back cover" to automatically offset each pad with a back cover for easy assembly and finishing.

Color

Image Enhance Visual Editor

The new Image Enhance Visual Editor is an easy interactive Command WorkStation 5.3 plug-in tool for adjusting image colors in a job without the need to open the file in the originating application. This feature provides real-time image editing with visual feedback and eliminates the need for additional image editing software. Image Enhance Visual Editor works with both PostScript and PDF files. It supports X-Object editing for PDF files, so adjustments are applied to all instances of the image in the file.

Image Enhance Visual Editor presets allow novice users to apply expert image enhancement and even assign them to a range of pages in the file. The default preset for Automatic Correction from the Preset pull-down menu will analyze and automatically enhance the image quality. For more advanced users, Image Enhance Visual Editor offers manual controls to adjust tone, color and sharpness. Operators can see image adjustments before they save changes.

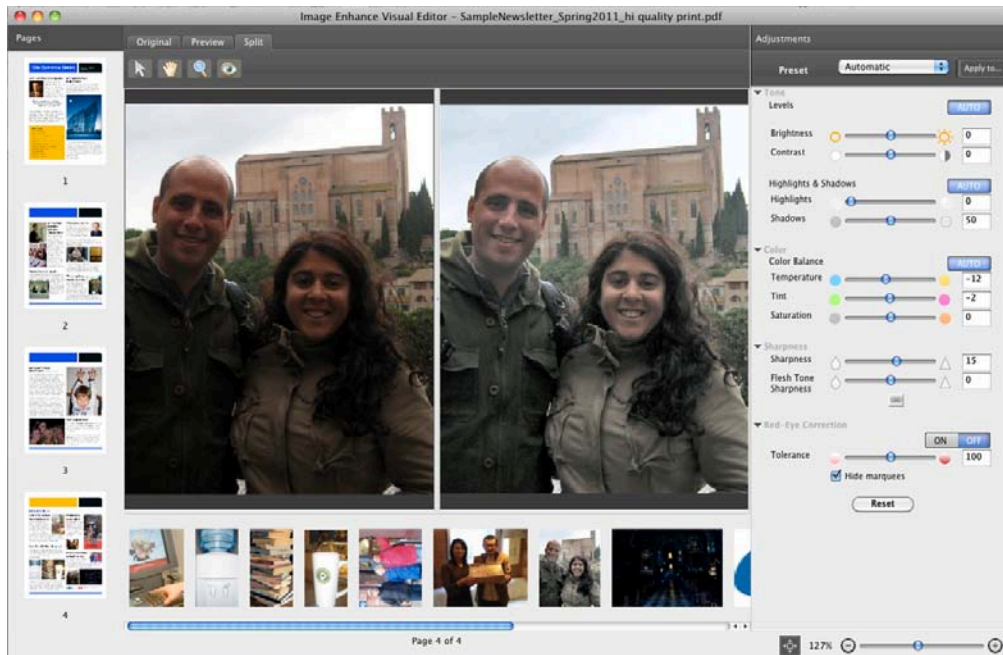


Figure 18: Image Enhance Visual Editor previews image correction results on the screen

Users may also save manual image correction settings as a preset and apply it to other images, pages or documents.

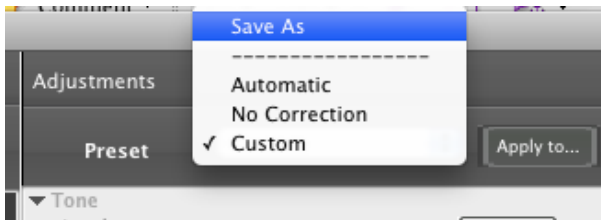


Figure 19: Users can save custom image correction settings to reuse in other images

Image Enhance Visual Editor corrects for red-eye too. When an operator has set red-eye correction for an image, marquees appear to show all instances of red-eye in that image. Users can select additional red-eye regions to correct or deselect areas that don't need correction. The user can make these adjustments using the onscreen preview, rather than wasting time and money on printing a sample.

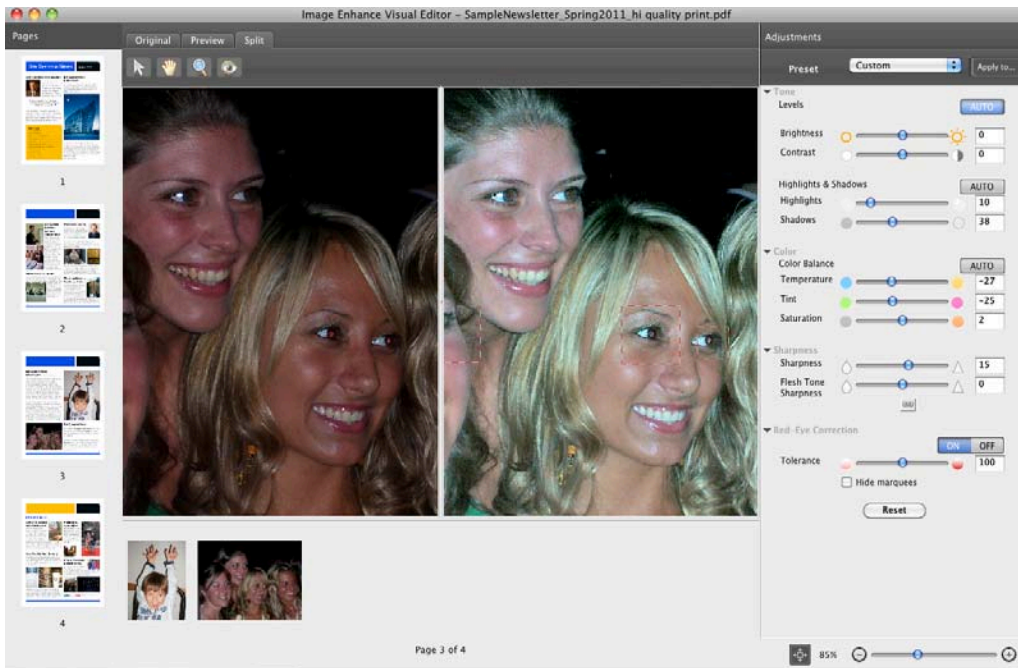


Figure 20: Users can select additional red-eye regions to correct or deselect areas that don't need correction

Once an operator saves image corrections settings from Image Enhance Visual Editor in PDF files, these are stored in the PDF so that the user can fine-tune corrections later. This way, PDF file adjustments are reversible.

Image Enhance Visual Editor works with file sizes under 2 GB, documents less than 100 pages and pages that contain fewer than 50 images. Also, Image Enhance Visual Editor is designed to detect and enhance natural images only, so as to be non-destructive to bitmap versions of graphics such as charts and graphs. Image Enhance Visual Editor supports RGB and CMYK input color. It does not preview spot colors and inter-object print settings such as overprint or transparency. These remain in the original file so that they will be honored when printing.



Visit the Demos section at the Fiery Command WorkStation website at www.efi.com/CWS5 to watch the Image Enhance Visual Editor video demonstration.

Fiery Advantages

- Fiery Image Enhance Visual Editor addresses the widest range of images and jobs by supporting RGB and CMYK color sources and the most commonly used file formats. This makes it the most complete toolset of this type in today's market.
- It can be used to improve image quality of many types of applications such as office documents, photobooks and professional publishing layouts.
- Fiery technology assembles mosaic images from Microsoft applications to ensure that image enhancement is applied to the total image instead of just to the mosaic segments these applications sometimes create.

Customer Benefits

- Service providers can increase revenues by offering image correction services.
- Service providers reduce turnaround time since operators do not need to return to the originating software application to correct the images.
- Service providers save money since they do not need expensive image retouching and layout software at every workstation.
- Customers are more satisfied.

New Calibrator Features

With System 10 many new features have been added to make the calibration process more effective, integrated and easier to use.

- Easier to calibrate
- Manage Calibration Sets
- Calibration Guard
- Job-based Calibration

Easier to Calibrate

In color printing, accurate color is critical. But maintaining consistent color over time, that is printing the same color repeatedly, is just as critical.

Calibration helps customers maintain color consistency over time.



Although the Fiery calibration technology has not changed, the redesigned Calibrator tool makes it so easy to use that customers are much more likely to use calibration and get the consistent color they want. A simplified user interface makes the calibration process easier to navigate. The calibration process now features a Wizard to guide users through. Contextual Help is available to explain every choice an administrator has to make. And administrators can grant calibration privileges to any and all users, making it more likely they will use it.

Simplified Calibrator User Interface

The Calibrator user interface is completely new and has been specifically redesigned to separate the different calibration functions in different windows:

- Calibrate — to perform the actual calibration process.
- Manage — for managing calibration sets.
- Preferences — for set-up functions.

This separation significantly simplifies the user interface, making the calibration process easier to navigate.

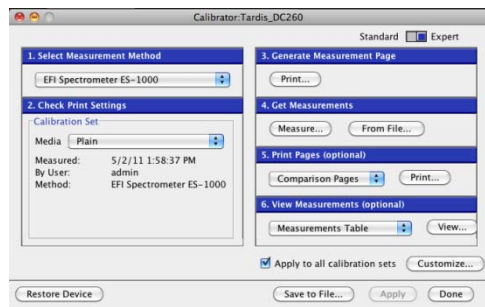


Figure 21: Calibration user interface before Fiery System 10

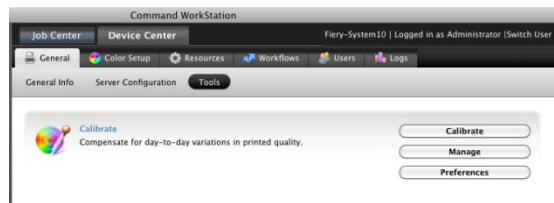


Figure 22: Calibration user interface with Fiery System 10

Guided Calibration

With Fiery System 10, the calibration process is extremely simple. The user only has to select the media. Once they have done that, the system automatically populates tray information for that media. Also it is now possible to calibrate using any paper type and size equal to or larger than letter/A4. Although some of the calibration targets choices in Preferences have been designed for tabloid/A3 paper sizes, if the larger paper size is not available, the target will be printed on a letter/A4 and the user will see a warning that not all the targets will fit on the smaller paper size.

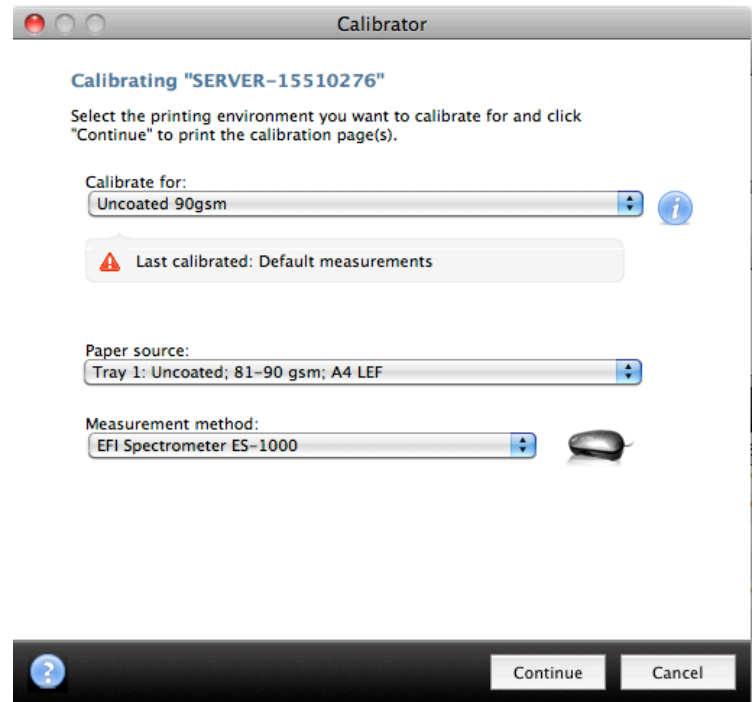


Figure 23: More flexibility setting up paper preferences

The Calibrate button now launches the Calibrator Wizard to guide users step by step through the calibration process.

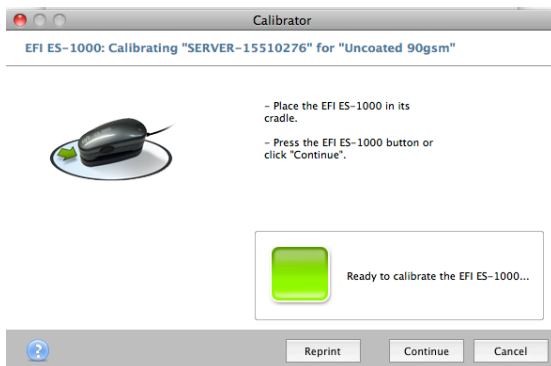


Figure 24: Calibrator Wizard guides operators through every step of the process

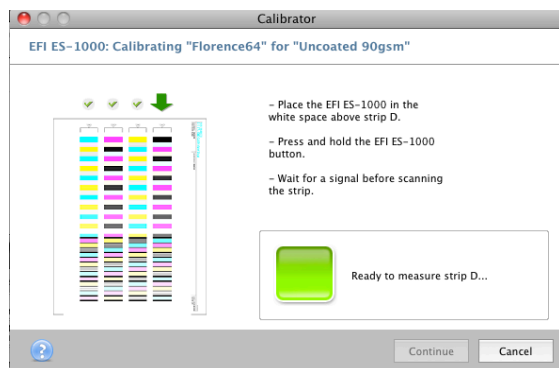


Figure 25: Calibrator Wizard guides operators through every step of the process

Contextual Help

System 10 provides comprehensive information for calibration functions. Each window displays a help icon that provides contextual help information that is specific to the content in that window.

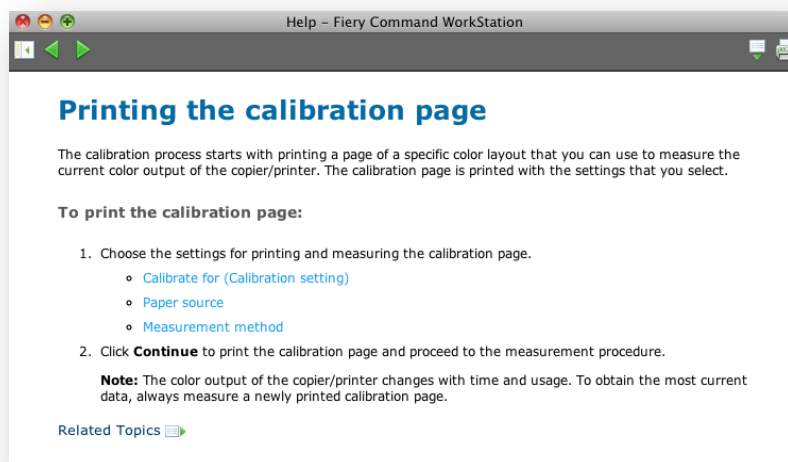


Figure 26: Help is specific to the content of that window

Any User Can Calibrate

With Fiery System 10, administrators can increase productivity by enabling any user to calibrate. Operators can set up their preferences in the Users and Groups window under the Users tab in Device Center. Calibration is now so easy and simple that operators really need no training to use it. Also, because calibration functions are now separate from management functions, administrators do not have to be concerned that users may accidentally change or modify any of the preferences or global settings.



Job Center		Device Center		Fiery-System10 Logged in as Administrator Switch User	
General	Color Setup	Resources	Workflows	Users	Logs
Users & Groups		Compare Rights			
Privileges	Administrators	Guests	Operators	Scan Users	Standard Users
Calibration	✓	✗	✓	✗	✗
Create Server Presets	✓	✗	✗	✗	✗
Fiery Mailbox	✗	✗	✗	✓	✓
Manage Workflows	✓	✗	✗	✗	✗
Print in B&W	✓	✗	✓	✗	✓
Print in Color and B&W	✓	✗	✓	✗	✓

Figure 27: Administrators can grant privileges to any and all users

Customer Benefits

- The Calibrator user interface has been simplified to make the calibration process easier to navigate.
- Calibration is very easy, it requires one decision, and the entire process is guided.
- Contextual help is available to explain every choice an administrator has to make.
- Easy calibration ensures it will be used regularly resulting in more consistent color output.

Manage Calibration Sets

Calibration Sets define a set of printing conditions that affect calibration results. A set contains information about the media, the engine's halftone screen capability and the profile being used. Calibration normalizes the tonal output of the device so that ICC profiles based on this normalization can deliver precision over time, simply by re-calibrating the engine back to the known state for the media and halftone settings.

System 10 makes it much easier for users to create new, edit existing and delete Calibration Sets. The ability to create and manage Calibration Sets increases the effectiveness of calibration because it ensures that calibration applies to a specific set of printing conditions.

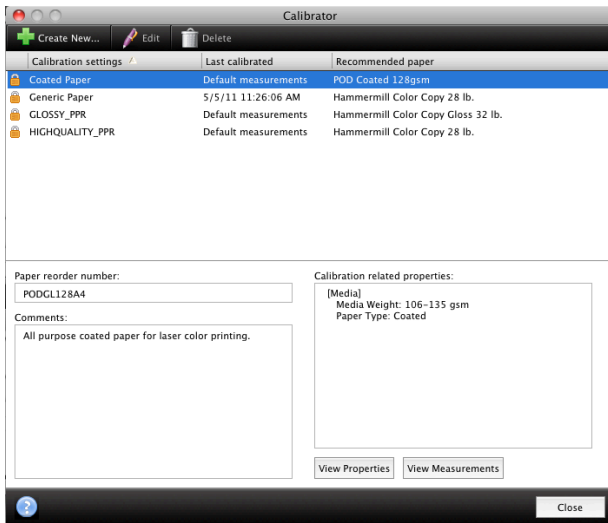


Figure 28: Manage Calibration Sets in Calibrator

In System 10, Color Profiler Suite is integrated directly with Manage Calibration Sets to create new profiles. Just click on “Create New” to create a new profile with the Color Profiler Suite Printer module.

Creating a new profile from this stage ensures the right Job Properties’ settings are in use since paper properties were already selected in Calibrator.

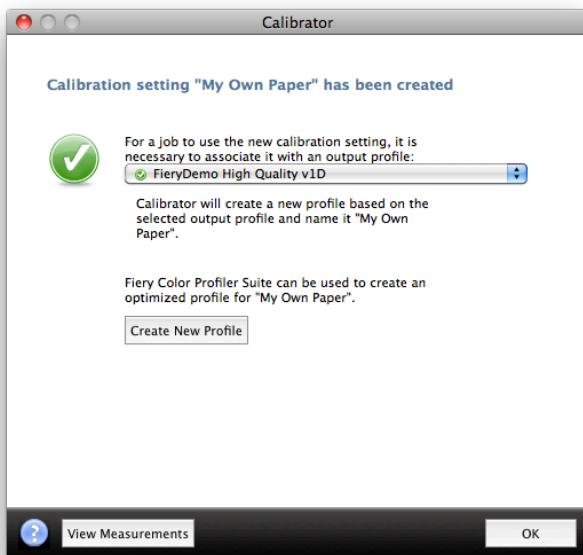


Figure 29: Create new profiles without leaving the Calibrator interface

Customer Benefits

- Manage Calibration Sets allows users to create new, edit existing and delete calibration settings.
- The ability to create and manage Calibration Sets increases the effectiveness of calibration because it ensures that calibration applies to a specific set of printing conditions.

Calibration Guard

Fiery System 10 has incorporated a “Calibration Guard” to provide calibration status, warnings and alerts to require the use of calibration tools. If calibration has expired, the Calibration Guard can prevent the jobs from printing, ensuring color consistency in every job at all times.

The new Calibrator Preferences allows for easy calibration set-up and includes the Calibration status settings to activate the Calibration Guard.

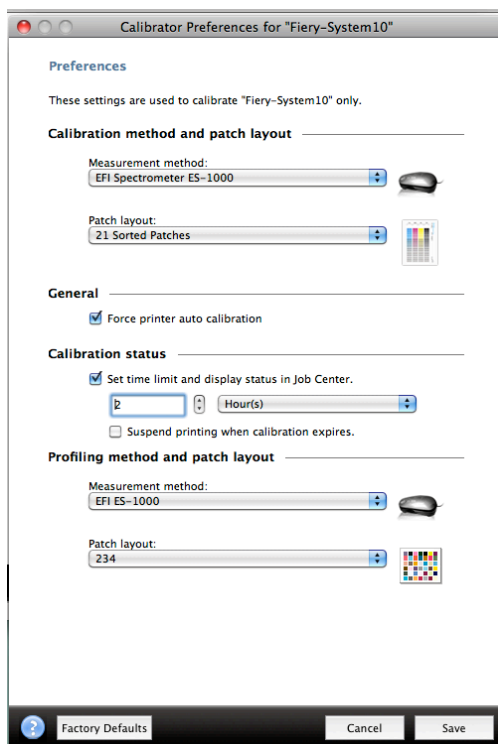


Figure 30: Calibrator Preferences

The Calibration Guard displays the Calibration Status in four areas:

- The Calibrator window.
- In the job-based Calibrator window.
- In the job summary for a selected job.

- Under Basic Settings for Color in Job Properties of a selected job.

The calibration status will also include a status icon; a green check signifies calibration is current, a yellow triangle warns the calibration time limit is near and a red triangle indicates that calibration has expired. Fiery System 10 makes it very easy to visually see and determine the calibration status of jobs at the Fiery server.

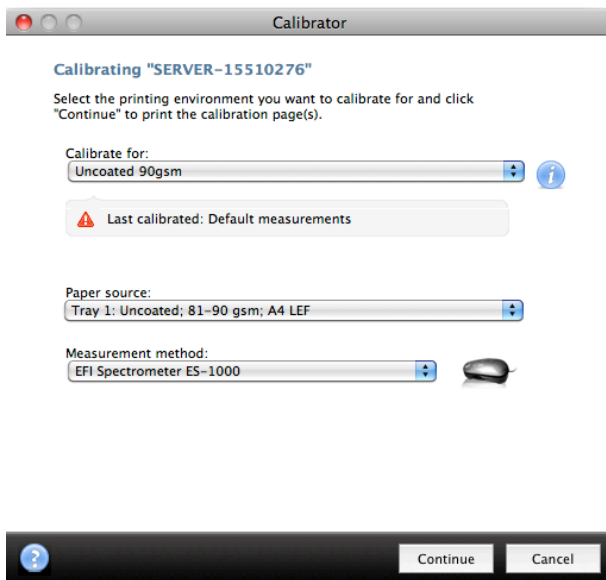


Figure 31: Calibration Guard in Calibrator interface

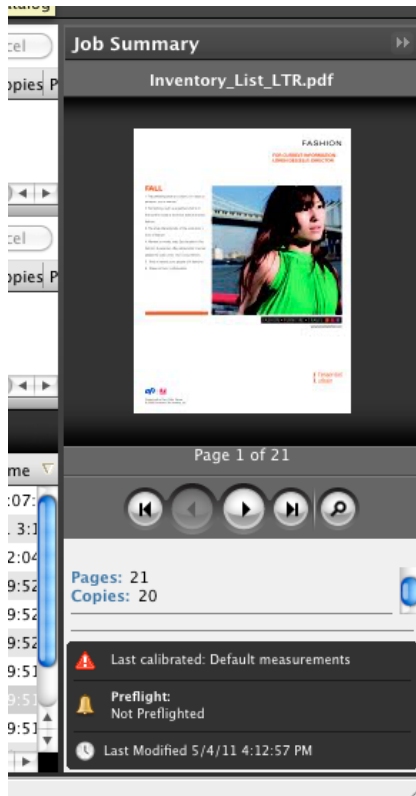


Figure 32: Calibration Guard in Job Summary interface

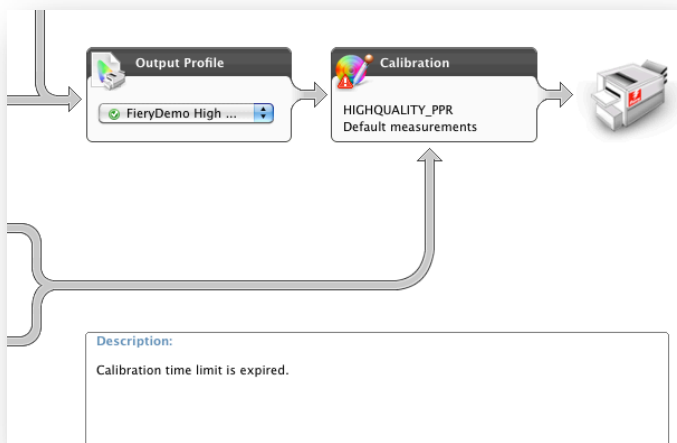
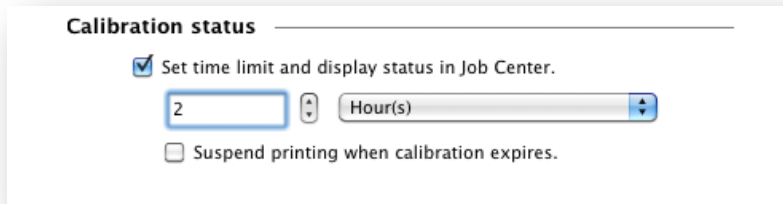


Figure 33: Calibration Guard in Job Properties interface

Administrators simply check the box “Set time limit and display status in Job Center” in the Calibration status section of the Calibrate window. They must also specify a calibration time limit the calibration is valid for. If calibration and color consistency are critical they should also check the “Suspend printing when calibration has

expired” preference box. Jobs sent to the Print Queue with an expired calibration date will move to the Hold Queue without printing. This saves money and resources by not printing jobs with expired calibration.



Calibration status

☒ Set time limit and display status in Job Center.

2 Hour(s)

☐ Suspend printing when calibration expires.

Figure 34: Calibration status settings

Integrated Color Profiler Suite Profiling Method and Patch Layout

If customers have Fiery Color Profiler Suite v3 installed, the profiling method and patch layout area is now integrated and displayed in the Calibrator Preferences window.

Fiery Advantages

- The ability to suspend jobs with expired calibration settings is a unique Fiery feature.

Customer Benefits

- Improves color consistency with status icons that remind operators to recalibrate.
- Saves time and minimizes waste by suspending jobs with expired calibration.
- Choosing calibration targets provides flexibility to suit customer paper inventories and requirements.

Job-based Calibration

Job-based Calibration increases accuracy and effectiveness because users customize calibration for a specific job and the associated media and profiles. This is extremely useful for jobs that use a non-standard media because most customers do not routinely calibrate special media. To calibrate for a specific job, users simply select the job in the Hold Queue and select Calibrate. A Calibrator Wizard will open to guide the user through the calibration process. With job-based Calibration, only the calibration setting(s) used by that job display automatically. When the job uses mixed media, the user can repeat the calibration process for all the media used in the job.

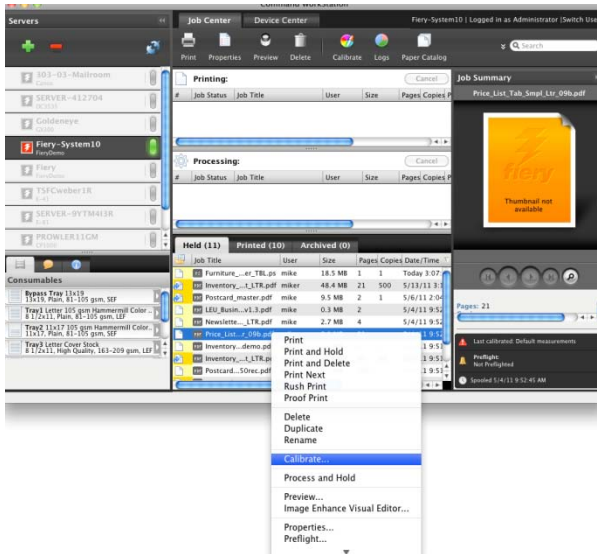


Figure 35: Starting job-based calibration from Job Center

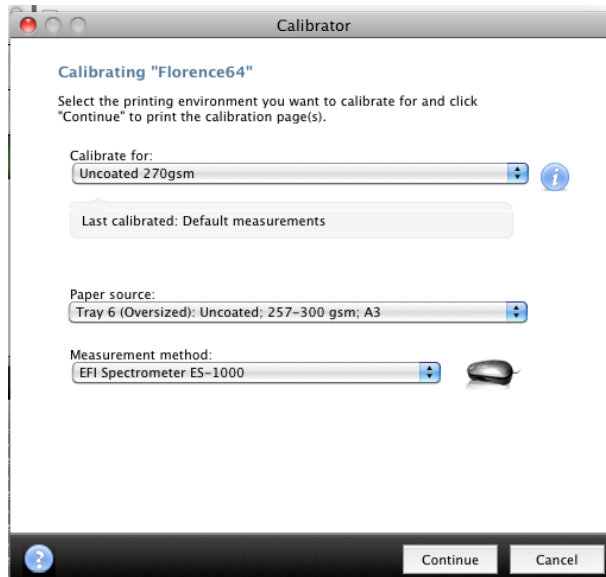


Figure 36: Job-based Calibration

Fiery Advantages

- Job-based Calibration is a unique Fiery feature.

Customer Benefits

- Increases color consistency by calibrating for specific media.
- Saves time by allowing customers to calibrate for the media they need at the time they need it.

Fiery Color Profiler Suite 3.0 Integration

The Color Profiler Suite for generating ICC output profiles is now integrated into the Fiery Command WorkStation 5.3 user interface. This integration gives users quick access to profiling tools, directly from the Command WorkStation interface, and improves the usability of Color Profiler Suite.

Tight integration of the Command WorkStation print job management interface with Color Profiler Suite enhances productivity for color-critical users. The ability to create profiles right where they are needed in Command WorkStation saves the user time and makes it more likely they will create new profiles when they need to.

Color Profiler Suite Integration with Profiles

Before System 10, users created, saved and exported profiles within Color Profiler Suite. To use the profiles, they had to import them into the Fiery server. Now users can create and edit profiles directly from Command WorkStation Profiles tab.

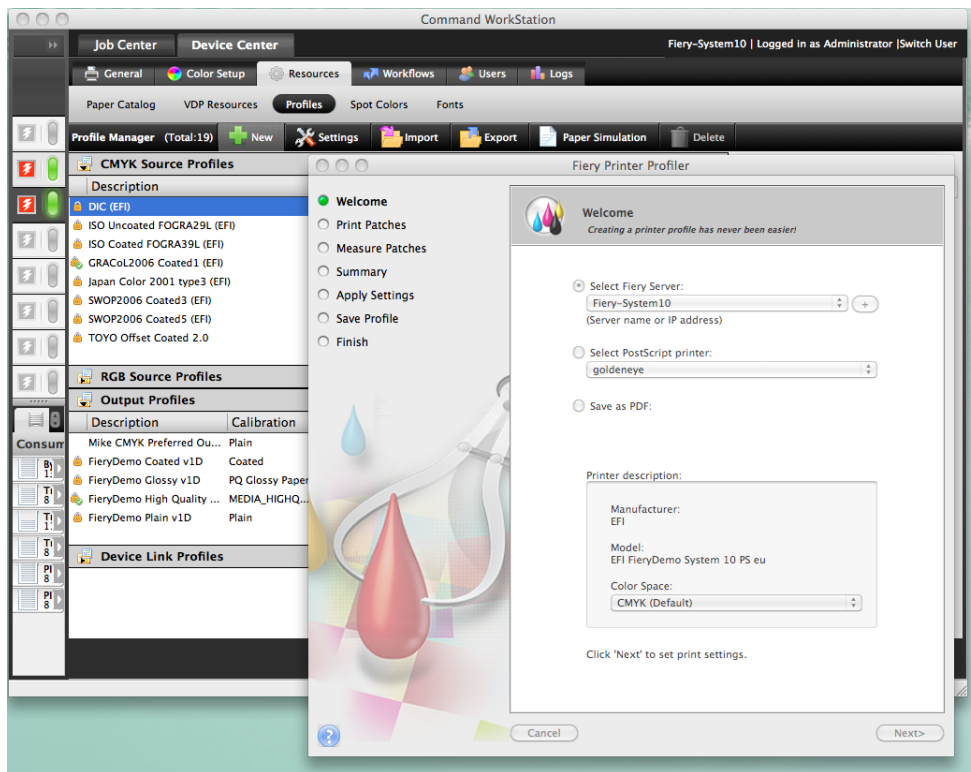


Figure 37: Selecting “New” launches the Color Profiler Suite printer module

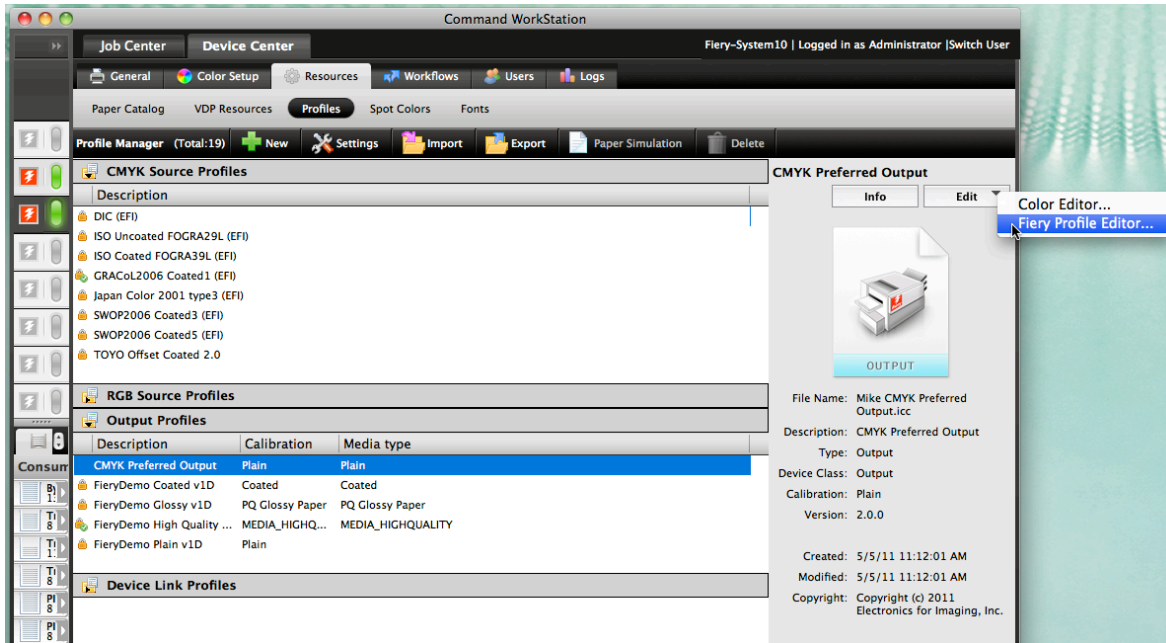


Figure 38: Selecting a profile and Fiery Profile Editor from the Edit pull down menu in the Command WorkStation Profiles tab launches the Edit module of Color Profiler Suite

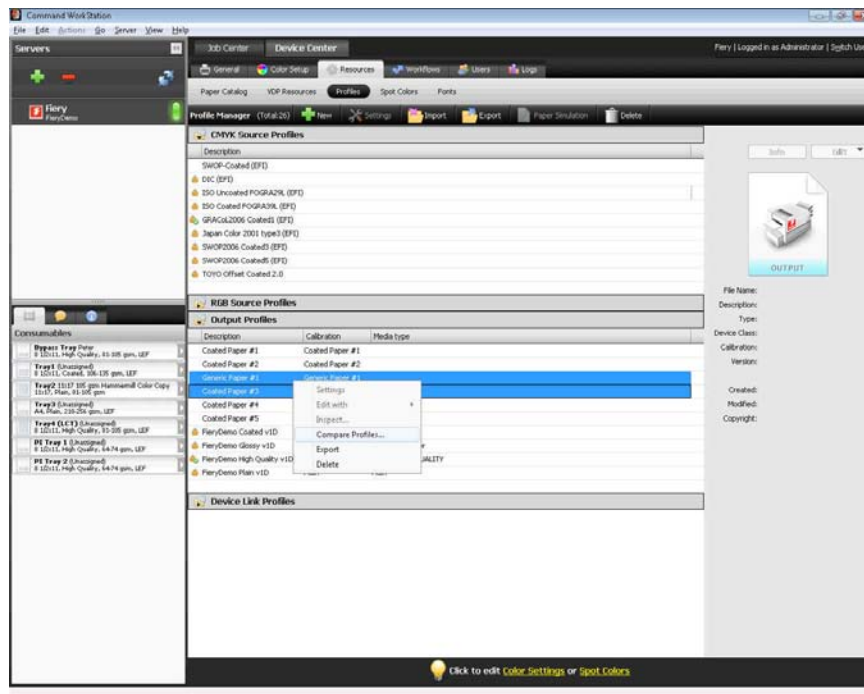
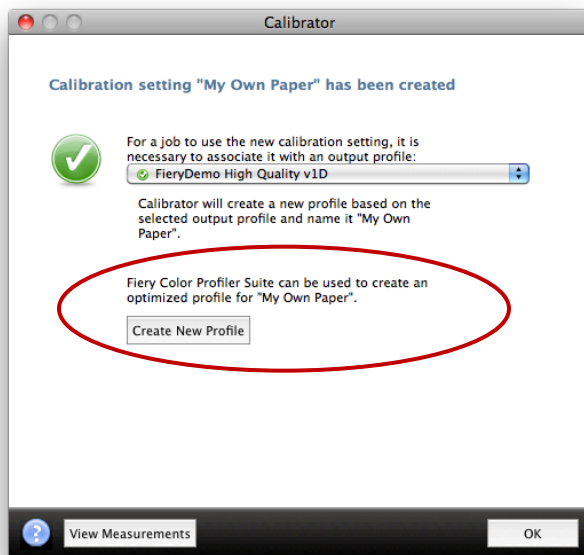


Figure 39: Preview and compare profiles using the Inspector module

Color Profiler Suite Integration with Calibrator

The Color Profiler Suite is now directly integrated into Manage Calibrator Sets to create new profiles. Just click on “Create New” to create a new profile in the Printer module.



Color Profiler Suite Integration with Spot-On

The newly added Inspect button in Spot-On launches the Profile Inspector module directly from Command WorkStation. This feature provides a comparison of the output profile with a spot color group. This comparison represents how closely spot colors can be printed using the selected output profile.

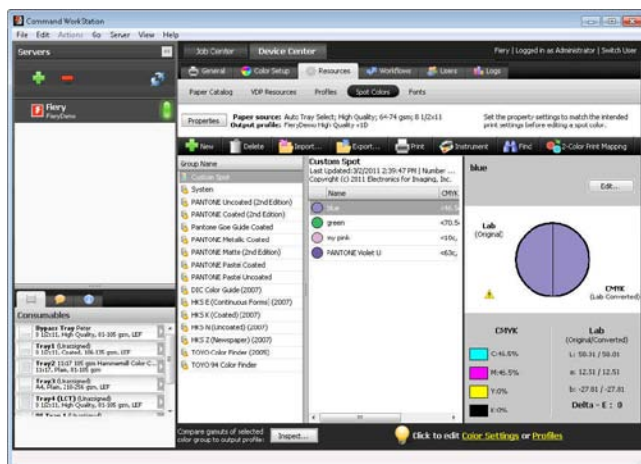


Figure 40: See how closely spot colors can be printed using the selected output profile

Color Profiler Suite Integration with Fiery ImageViewer

With the integrated Monitor Profiler in the Fiery Image Viewer preferences, users can create a custom monitor profile. A custom monitor profile allows for a more accurate onscreen softproof of the printed job.

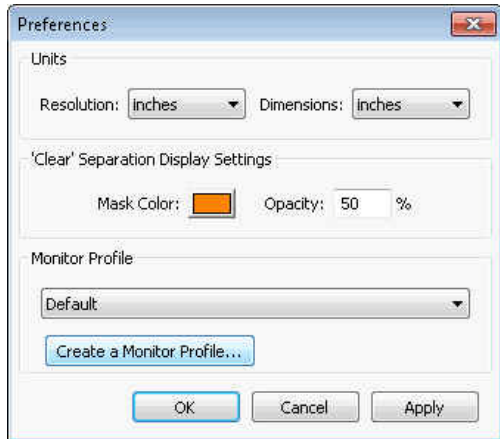


Figure 41: Create monitor profilers without leaving ImageViewer

The integrated Profile Inspector module provides a comparison of the monitor profile and output profile, visually representing the gamut of the display compared with that of the output color space being previewed.

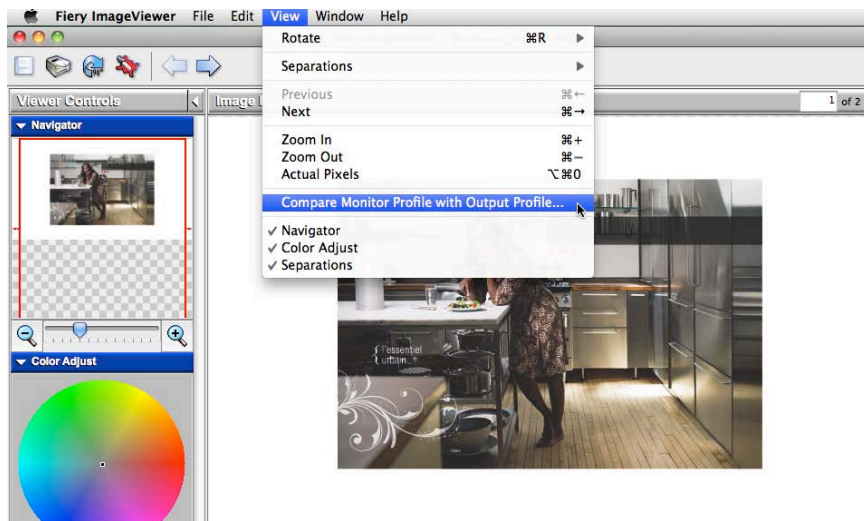


Figure 42: Compare monitor and output profiles

If Color Profiler Suite is not installed and integrated, the Fiery server will display a More Info link, making customers aware of Color Profiler Suite and its benefits.

Fiery Advantages

- The integration of the Inspector module helps users determine whether spot colors are in the gamut of the current output profile. It also allows them to compare display to output profiles to get a sense of the precision of the softproof.
- These features are unmatched by any competing RIP.

Customer Benefits

- Increases productivity and ease by enabling users to do all their work within one system.
- Lets users make new profiles as they are needed.
- Reminds the user that Color Profiler Suite is available to increase their color precision both when printing and when previewing work through Image Viewer.

Fiery Spot-On Enhancements

With Fiery System 10, the Spot-On Color Search Pattern can print on any paper size. Before System 10, printing was limited to letter/A4 and tabloid/A3.

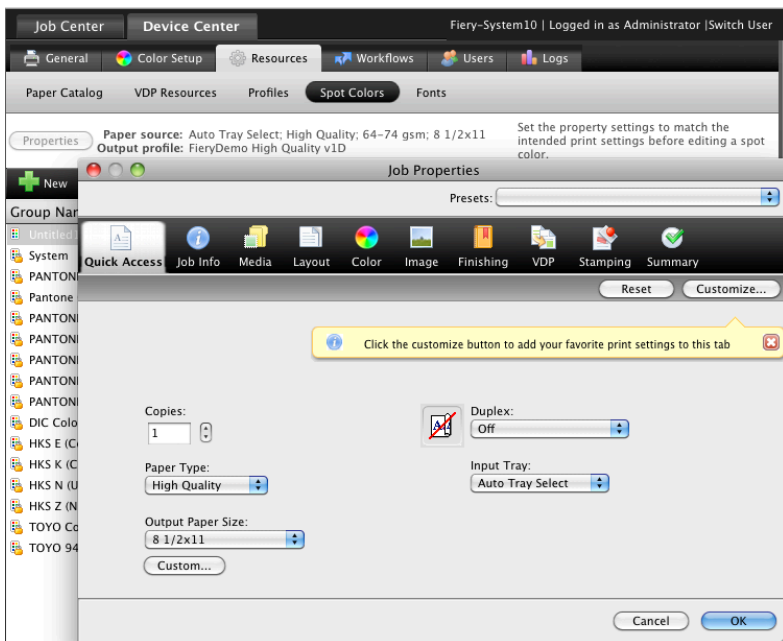


Figure 43: Use Job Properties to define the specific paper to use for printing the Color Search Pattern

Customer Benefits

- Increased color accuracy by using the same media used in the final run.

PANTONE PLUS SERIES libraries

Fiery System 10 servers include the new PANTONE® PLUS SERIES libraries.

The PLUS SERIES preserves all of the current PMS colors of the PANTONE MATCHING SYSTEM® – which it replaces – while adding a host of contemporary colors, for greater design flexibility. All of the new PLUS SERIES Solid Colors are printed using the existing 14 PANTONE MATCHING SYSTEM Basic Color Inks.



To know more about the PLUS SERIES follow this link

<http://www.pantone.com/pages/pantone/pantone.aspx?pg=20873&ca=1>

Customer Benefits

- Adds a host of contemporary colors, for greater design flexibility.

Optimize RGB Transparency

Transparencies are part of the PDF language. But PostScript does not recognize such definitions. Therefore, when using the CPSI print path, the Optimize RGB Transparency feature flattens multiple overlapped RGB transparencies in a PDF file into one CMYK element during the processing of the PDF.

This enhances the print quality of PDF files that include overlapping RGB elements defined with transparency by rendering and accurately printing the resulting colors. It only applies to PDF files printed through the CPSI print path.

To use this feature, operators check the “Optimize RGB transparency” box in the Color Tab of Job Properties.

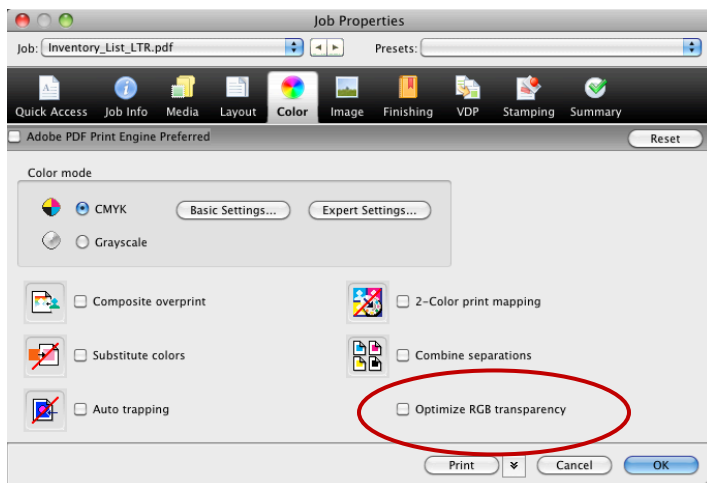


Figure 44: “Optimize RGB transparency” box in the Color Tab of Job Properties

Customer Benefits

- Increased color accuracy when printing PDF files through CPSI processing path.

Paper Simulation with ES-1000

Paper Simulation Editing enables more accurate simulation of special media such as newspaper, yellow pages and packaging. Prior to System 10, the L*a*b values defining the white point of the paper had to be entered manually. Fiery System 10 integrates the use of an ES-1000 into the user interface of the Paper Simulation feature. The ES-1000 spectrophotometer reads the white point value of the paper and automatically populates the L*a*b values. Paper Simulation eliminates the need to make a custom ICC profile for the source space, since reference values may not be available. This feature provides a quick way to simulate a proof for a printing process that uses colored or low-quality substrate.

The Paper Simulation Editing feature is part of the Fiery Graphic Arts Package, Premium Edition option.

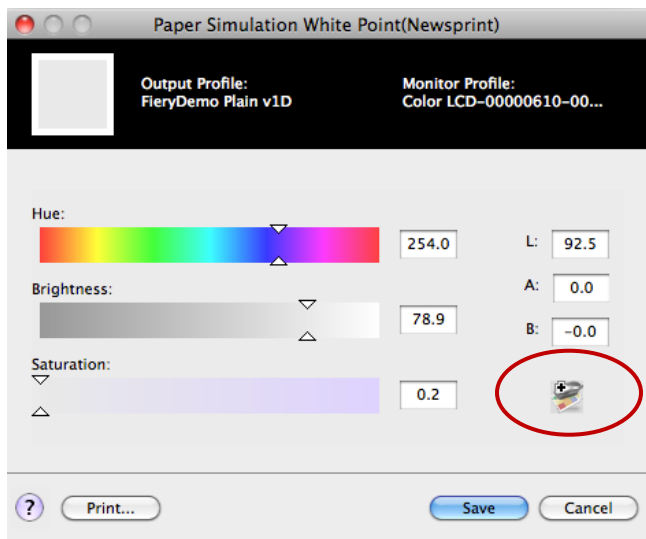



Figure 45: ES-1000 is used to measure the media white point

Customer Benefits

- Quickly simulates a proof for a printing process that uses colored or low-quality substrate.
- Reduces steps required in determining the white-point of paper to be simulated.
- Improves the accuracy of paper simulation when using an ES-1000.

Fiery Graphic Arts Package Standard with Fiery External Servers

These features from the optional Graphic Arts Package are now built in and available as standard features in Fiery external servers based on System 10.

- 
- Soft Proofing provides color-corrected previews of RIPped jobs.
 - Paper Simulation simulates the color of the paper to be used for final output and the effect that color has on inks.
 - Halftone Simulation prints in halftone mode to simulate the final dots that will be imaged on films or plates for offset printing.
 - Image Enhance Visual Editor is an easy interactive tool for adjusting image colors in a job.
 - TIFF/IT Hot Folder filter allows input of TIFF/IT files to the Fiery server through a Hot Folder.
 - Unlimited Separations combines pre-separated PostScript jobs into a composite color print. With support for unlimited separations, customers can incorporate multiple PANTONE® or custom colors into a job. For more information go to www.efi.com/gap.

Customer Benefits

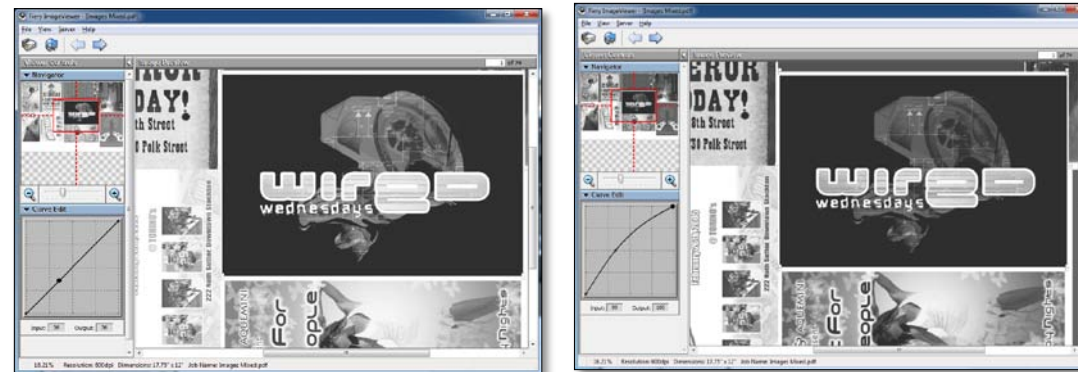
- More integrated graphic arts features provide higher color quality and increased productivity.

Fiery ImageViewer for Black and White

The ImageViewer for Black and White is an optional plug-in to Fiery Command WorkStation application for Fiery servers driving black and white printers. It lets operators preview full-resolution print data, so they can see exactly how the job will look before they print it — saving time and reducing waste and mistakes.

It also provides controls to adjust the black tone curve, and lets operators copy the same tone curve to other jobs or similarly equipped engines. This way, customers can split long runs between multiple engines with consistent output.

With it customers can match the output for their customer satisfaction and black tone curves can be stored and edited or reloaded over time to guarantee a consistent delivery of print results and accommodate changing print requirements.



Before

After

Customer Benefits

- Full resolution previews allow operators to review the content and check for missing fonts, images, PS errors and layout issues. All this without the need to print the job, saving clicks and minimizing waste.
- Black tone curve adjustments can be saved and applied to other jobs or Fiery driven engines to ensure consistency of the output at all times.



Usability

Fiery Command WorkStation 5.3

The latest version of Fiery® Command WorkStation includes all new features to improve usability, image quality and imposition workflows.

New features include:

- User Defined Finish Size: Fiery SeeQuence Impose honors the designer's intent by automatically detecting the trim box and bleed box defined in the source document. Operators gain greater control and get the job done faster with fewer errors. . *For more information on this feature refer to the Usability section of this document.*
- Fiery Image Enhance Visual Editor: Provides an interactive toolset for optimizing image appearance and creating custom corrections. Gives users the control to adjust brightness, contrast, highlights, shadows, color balance, sharpness and make red-eye corrections on any image. *For more information on this feature refer to the Color section of this document.*
- Color Profiler Suite v3.0 integration: This integration gives users quick access to profiling tools, directly from the Command WorkStation interface, and improves the usability of Color Profiler Suite. *For more information on this feature refer to the Color section of this document.*
- Undo/redo enhancements: The undo function works across the left-hand Page View pane and the right-hand Settings pane. *For more information on this feature refer to the Usability section of this document.*
- 3D Reader View: See all media information by page including type, weight, paper size and name. Users can also zoom and rotate 360 degrees for a better representation of the finished job. *For more information on this feature refer to the Usability section of this document.*
- Additional media information in Job Summary: The job summary pane now shows paper type and weight information. This additional information ensures continuous production and helps the operator identify paper requirements before sending to print.
- Remove Paper Catalog association: Provides an increased flexibility linking media with trays by easily unpublishing the current Paper Catalog association with a right-click command.
- Export custom view of Job Log: Customize the view of the Job Log and export just the data in that current view. Users get the exact amount of data they need within the selected date range.
- Job Properties Print Actions: Reduce the number of clicks to print a job. Complete additional print actions such as Print and Hold or Process and Hold directly in Job Properties.

- New message to customize Job Properties: First-time Fiery users will be productive from day one by taking full advantage of productivity tools like the Quick Access tab in Job Properties.
- Auto-login: CWS can now save your passwords and automatically login to all your Fiery servers at time of launch.

For additional information, free downloads, videos and training resources visit www.efi.com/cws5

CWS 5.3 New Feature Support and Requirements

New Features	System 6-8R2	System 9/9R2	System 10
Additional media information in Job Summary	Yes	Yes	Yes
Remove Paper Catalog association	Yes	Yes	Yes
Export custom view of Job Log	Yes	Yes	Yes
Job Properties Print Actions	Yes	Yes	Yes
Quick Access Tab Reminder	Yes	Yes	Yes
Save Password and Auto-login	Yes	Yes	Yes
Undo/Redo Enhancements	SI/SC/SS	SI/SC/SS	SI/SC/SS
3D Reader View	SI/SC/SS	SI/SC/SS	SI/SC/SS
User Defined Finish Size	N/S	SI	SI
Fiery Image Enhance Visual Editor	Not supported	GAP / PP	GAP / PP
Spot Colors: right click, Copy-Paste	Spot-On	Spot-On	Spot-On
CPS 3.0 integration	CPS v3	CPS v3	CPS v3
SeeSequence PostScript preview	N/S	N/S	SI/SC/SS
Mixed Finishing Sets	N/S	N/S	SC
Duplo support for barcode and registrations marks	N/S	N/S	SI
New Duplo imposition layout options	N/S	N/S	SI
25 x 25 Gangup	N/S	N/S	SI
Print marks on front surface only	N/S	N/S	SI

Table references: SI: SeeSequence Impose, SC: SeeSequence Compose, SS: SeeSequence Suite, GAP: Graphic Arts Package, PP: Fiery Productivity Package; N/S: not supported

Fiery SeeSequence Suite Enhancements

- 3D Reader View
- SeeSequence PostScript preview
- Undo/redo enhancements
- Fiery SeeSequence Compose enhancements
 - Mixed Finishing Sets
- Fiery SeeSequence Impose enhancements
 - User Defined Finish Size
 - Duplo support for barcode and registration marks
 - New Duplo imposition layout options
 - 25 x25 Gangup
 - Print marks on front surface only

3D Reader View

In Command WorkStation 5.3, the SeeSequence Impose and Compose Reader View now features 3D capability. The user can also zoom and rotate the three-dimensional representation of the finished job 360 degrees. The 3D Reader View also displays duplexing and paper size. This 3D Reader View is not only fun to use and demonstrate, but it minimizes printing errors and waste.

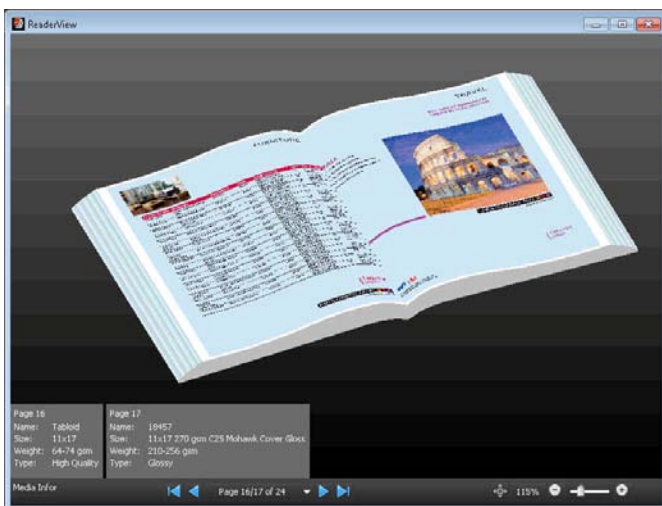


Figure 46: 3D Reader View

Fiery Advantages

- This feature is unique to Fiery servers.

Customer Benefits

- Increases usability with tools that preview a more accurate finished document.
- Saves money and increases productivity by minimizing printing errors and waste.

PostScript Previews

SeeSequence Impose and Compose will create and display thumbnails for PostScript files without the need to install Acrobat Distiller on the Command WorkStation client. This increases the usability of SeeSequence Suite by eliminating the need for any additional software. Letting users see thumbnails of PostScript files minimizes errors and waste, saving money and increasing productivity. Prior to System 10, users only saw wireframes if the system couldn't find Acrobat Distiller.

This feature is enabled by default and is located in Command WorkStation Preferences Paths.

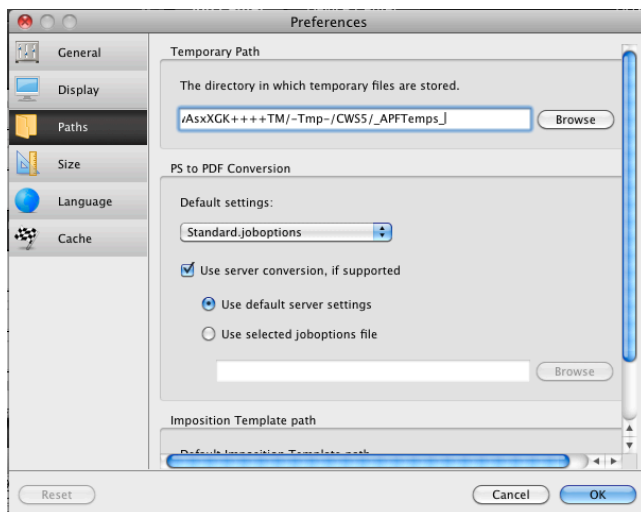


Figure 47: PS to PDF conversion is on by default

Customer Benefits

- Increases usability with the ability to preview any PostScript file from the Command WorkStation interface.
- Saves money by eliminating the need for additional software.
- Lets users see thumbnails of PostScript files to minimize errors and waste, save money and increase productivity.

Undo/Redo Enhancements

Prior to System 10, the undo and redo capabilities were available in the Page View only. Users can now access them in the SeeSequence Suite Settings panels as well, so they can more quickly undo and redo previous settings. Multiple levels of undo and redo are available now as well.

Undo/redo is enabled from the Edit menu.

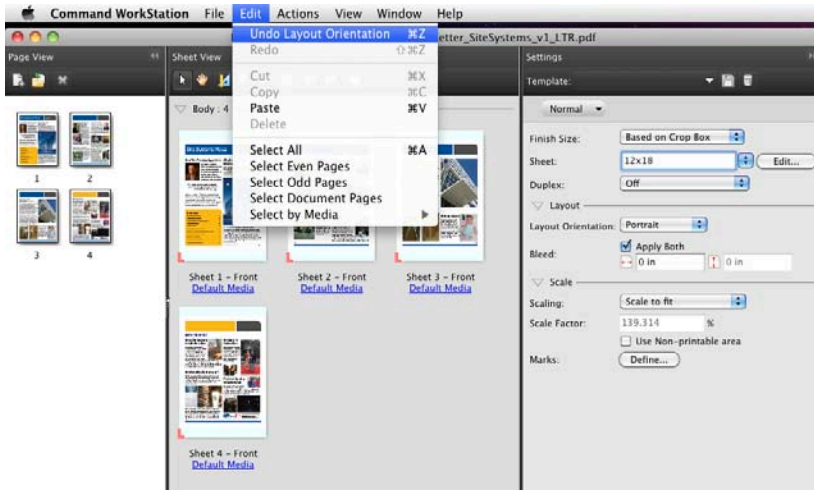


Figure 48: Multiple levels of Undo and Redo are now available

Customer Benefits

- Increased usability and productivity because of the ability to undo and redo settings multiple times.

Fiery SeeSequence Compose: Mixed Finishing Sets

In high-volume production environments producing multiple-page jobs including multiple chapters or sections like training manuals, business reports or business proposals, customers may often require special manual assembly due to specific requirements in some of their subsections. For example, some sections may need special processing like a z-fold for a tabloid insert, a hole-punch in addition to staple or other requirements.

In order to produce job like these, customers would have needed to print the chapters separately and manually assemble the output, making these very labor-intensive jobs

In System 10, Mixed Finishing Sets options are now available in SeeSequence Compose to streamline and automate the assembly process to produce a fully finished job. With an inline finisher attached to the print engine, customers can select multiple options and subsets in a single job. Mixed Finishing Sets also allows users to specify different finishing options among different subsets. These finishing options and associated terminology will vary based on the inline finisher and print engine.

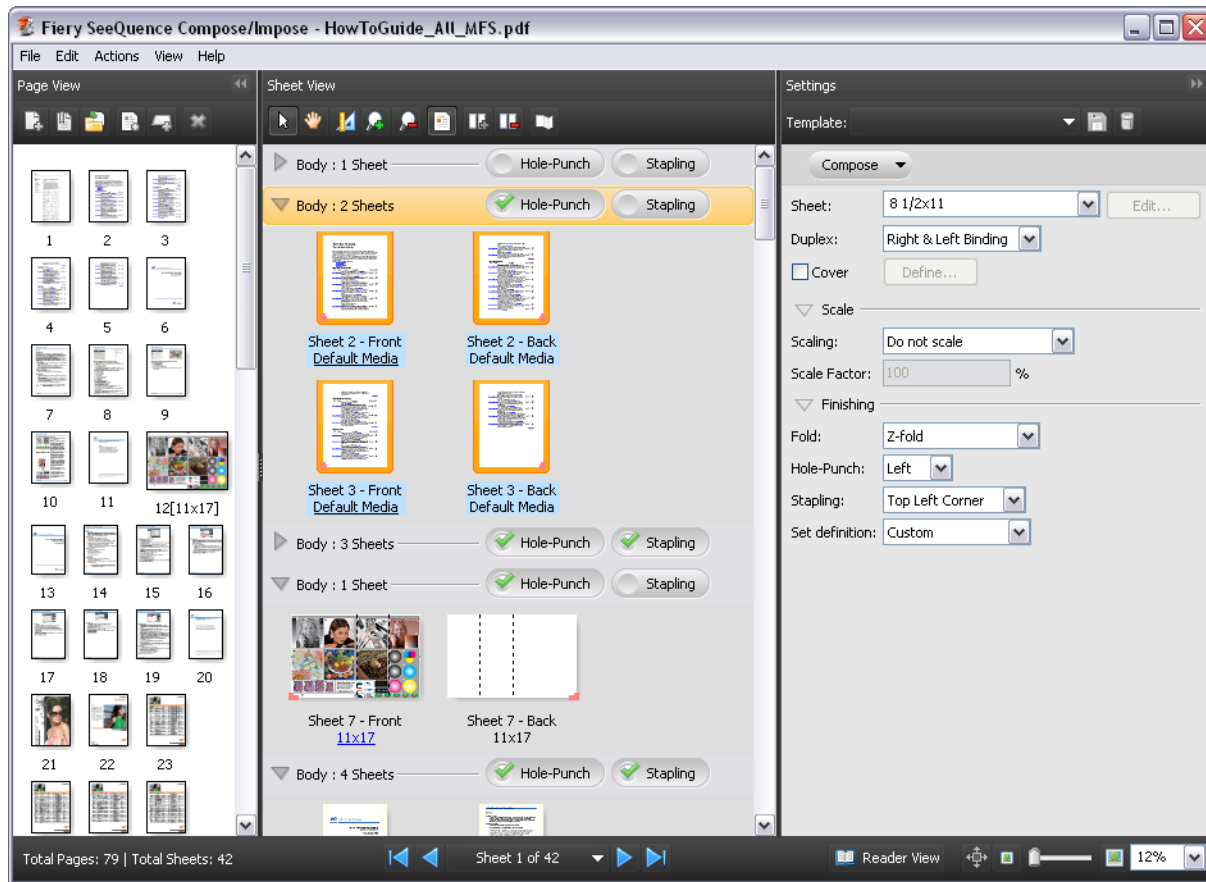


Figure 49: Mixed Finishing Sets in SeeSequence Compose

Customer Benefits

- Mixed Finishing Sets produces finished documents with minimal operator intervention.
- Increased productivity from the use of inline finishers with SeeSequence Compose.

Fiery SeeSequence Impose New Features

Five new features have been added to Fiery SeeSequence Impose:

- User Defined Finish Size
- Duplo support for barcode and registration marks
- New Duplo imposition layout options
- 25 x25 Gangup
- Print marks on front surface only

User Defined Finish Size

Designers typically design documents to be printed, based on their final “finished,” or trimmed, size. This finish size is often smaller than the sheet size on which they are printed. The PDF definition of the final finish size is the “trim box.” In addition, the designer may also define content to “bleed” beyond the final finished size. This “bleed box” value gives the operator and finishing equipment some latitude in finishing the document to prevent unexpected white space between the specified finish size and where the job may actually have been trimmed. The imposition of the job, including the placement of trim marks, is based on the finish size of the job.

Prior to Command WorkStation 5.3, operators had to set up the file for imposition by using SeeSequence Impose bleed values to set the finish size. Additionally, operators or designers sometimes needed to modify the original file and define a “custom page size” to be able to define a bleed, which affected the positioning of the content on the page.

With Command WorkStation 5.3, Fiery SeeSequence Impose takes advantage of the designer-defined trim box and bleed box information incorporated in the file. In Fiery SeeSequence Impose the operator can select “User Defined” as the “Finish Size” setting. This maps the trim box value in the file to the SeeSequence Impose Finish Size setting. The system also reads and applies the bleed values defined in the document.

Support of designer-defined trim and bleed definitions means that the print operator does not have to spend time determining the finish size and bleed size in SeeSequence Impose. They do not need to make modifications or changes to the original file to impose and print the file. With the User Defined Finish Size feature, SeeSequence automatically imposes the job based on the designers’ finish size definition.

Additionally, Fiery SeeSequence Impose can accurately impose and print jobs composed of several different PDF files with unique trim and bleed sizes, and page (media box) sizes.

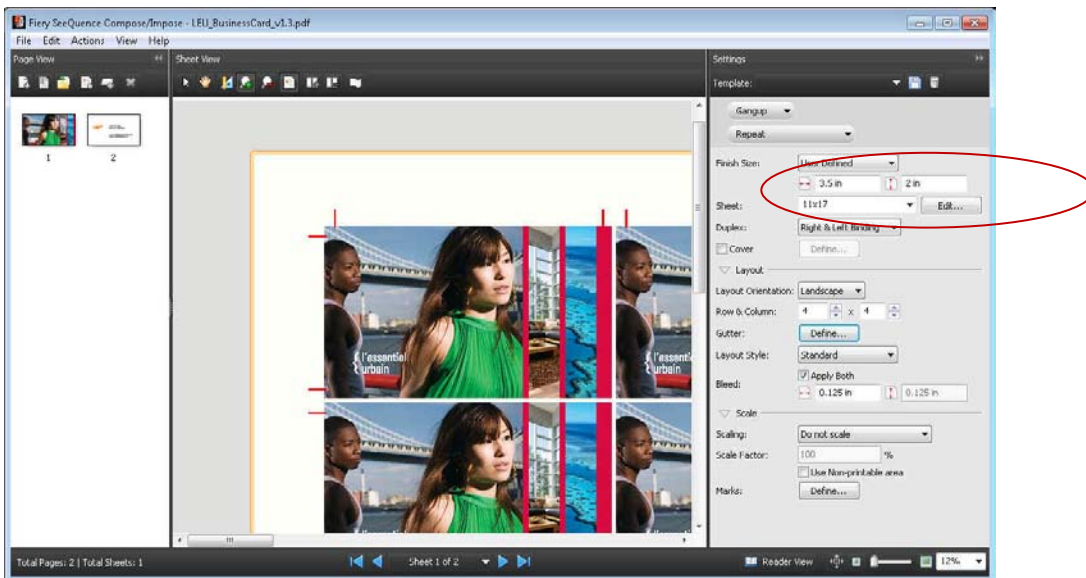


Figure 50: User Defined Finished Size controls

Background Information:

A PDF media box describes the size of a PDF page. Trim Box and Bleed Box are one of five PDF page box attributes. The Trim Box is important because it defines the final page size. Imposition programs and workflows use the Trim Box as the basis for positioning pages on a press sheet. The Bleed Box determines how much printed information should extend beyond the finished size of the page. When a bleed is defined, printing takes place on oversized paper and then cut down to its final exact size. This can give a final seamless appearance of the image "bleeding" off the edge.

Media Box: 11x8.5

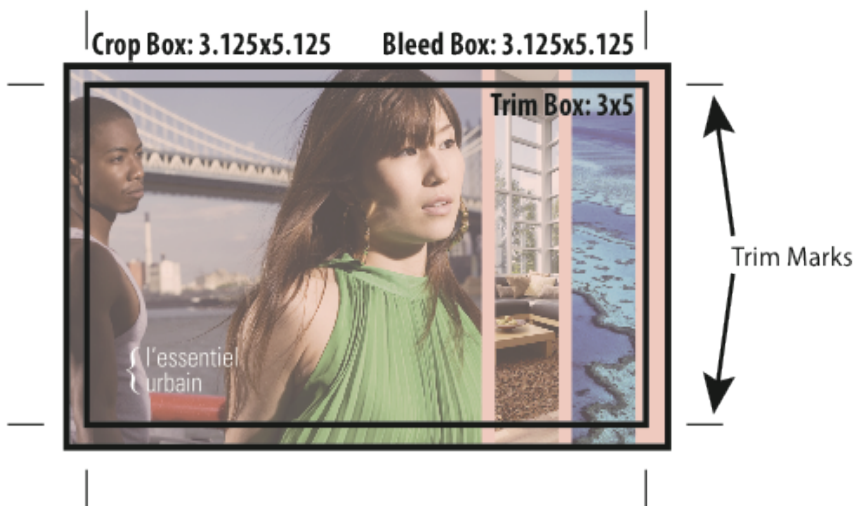


Figure 51: PDF definitions for bleeds and trim marks

Visit the Demos section at the Fiery Command WorkStation website at www.efi.com/CWS5 to watch the video demonstration.

Customer Benefits

- Improves usability as the designer defines the document with the desired trim and bleed sizes. Plus, imposition jobs can be done from files containing different trim and bleed sizes.
- Increases productivity because the operator can perform a faster imposition job setup and can focus on production, instead of having to guess the designer's intent and change the original document.
- Saves time and money with fewer print errors and miscommunication with the operator.

Duplo Support for Barcode and Registration Marks

Fiery System 10 supports Duplo USA's DC-615, DC645 and DC745 offline finishers. Fiery servers using System 10 can print preconfigured barcode and registration marks in the upper right corner of a sheet. The barcodes and registration marks instruct the Duplo finisher how to position its blades, cutters and creasers in order to finish the document appropriately.

Prior to System 10, the operator had to spend the time to manually program the finisher to move the cutters and creasers to the right position, and sometimes made mistakes. This feature also allows operators to offset the sheet contents away from the Duplo registration marks to prevent trimming of job content.



Figure 52: A Duplo DC-645 Slitter/Cutter/Creaser



Figure 53: Barcode reader automatically sets up pre-programmed jobs

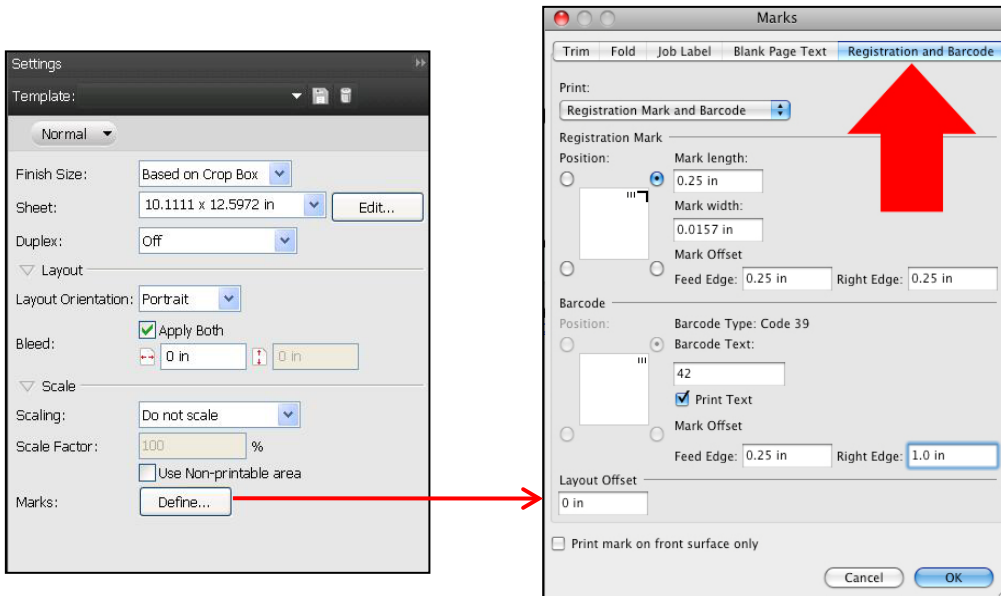


Figure 54: SeeSequence Impose settings include definition of Registration Mark and Barcode

Customer Benefits

- Increases productivity from working with industry-standard finishers.
- Saves times and minimizes waste when finishers can be automatically positioned.

Duplo Imposition Layout Options

The new Duplo imposition layouts are layout schemes intended for post-processing with a Duplo offline finisher. The imposition layouts available before System 10 have been limited to VDP file formats. In System 10, those layout formats are now available since research showed that the most common file type for printing to be finished with a Duplo offline finisher is in PDF format.

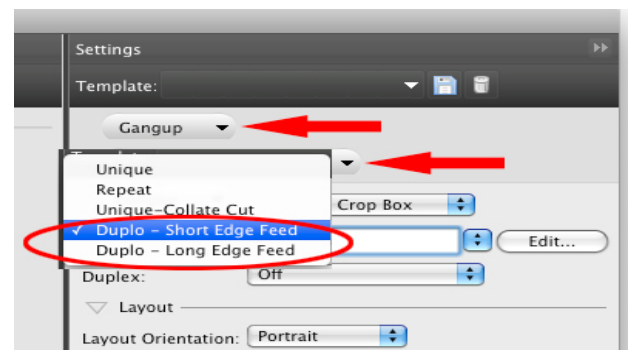
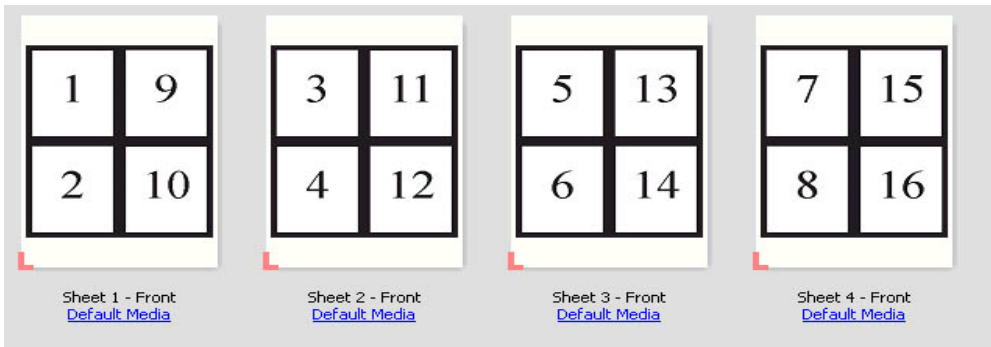


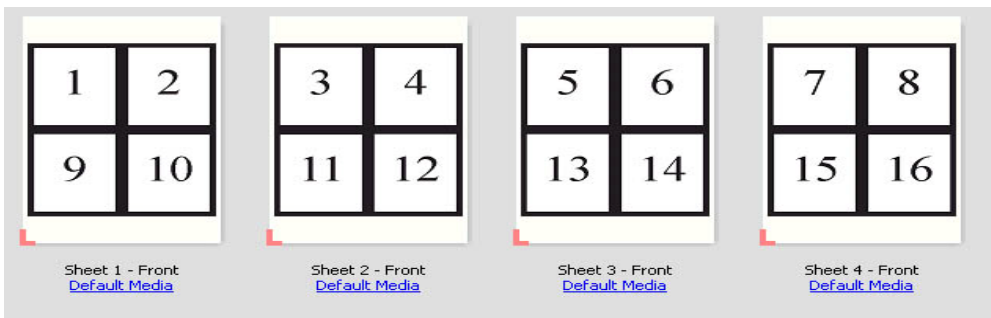
Figure 55 The new selections are: Duplo Long Edge and Duplo Short Edge impositions for non-VDP PDF and PS files.



The Duplo – Short Edge Feed Imposition Layout orders pages sheet wise in line with columns or rows arranged in direction perpendicular to the shortest sheet edge. This layout optimizes page layout to fill the rows and columns on a sheet.



The Duplo – Long Edge Feed Imposition Layout orders pages sheetwise in line with columns or rows arranged in direction perpendicular to the longest sheet edge. This layout optimizes page layout to fill the rows and columns on a sheet.



Customer Benefits

- Extends Duplo offline finisher support to non-VDP jobs.

25 x 25 Gangup

System 10 extends the Fiery SeeQuence Impose Gangup row and column repeat limit from 10 x10 to 25 x 25. An added wireframe preview provides fast previews for gang-ups over 10 x 10. Customers often request this feature, especially for printing stamps, tickets and thumbnails on one page.

Customer Benefits

- Saves paper and click count with higher gangup repeats on one larger sheet of paper.

Print Marks on Front Surface Only

The checkbox “Print mark on front surface only” at the bottom of the “Marks” window of SeeQuence Impose prevents the printing of trim and fold marks, job labels and blank page text on the back of a page when customers are using duplex printing. Trim marks are only needed on one side of a page and this prevents unwanted marks on the other side of a duplex page. This can be important if the marks don’t line up exactly on both sides of the sheet.

Customer Benefits

- Prevents unwanted marks in the event that the marks don’t line up exactly on both sides of a duplex page.

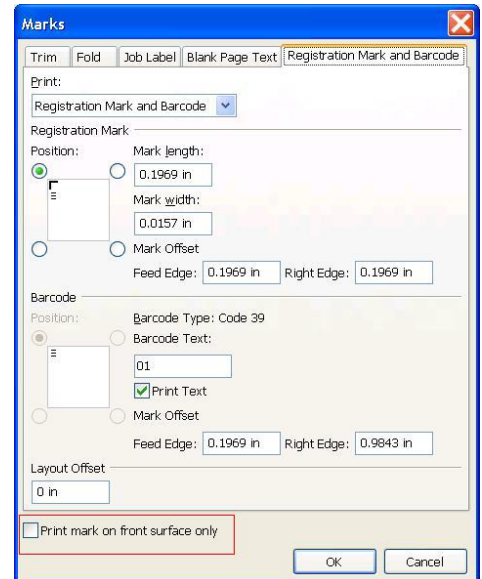


Figure 56: Setting up print marks for surface only

Job Properties Print Actions

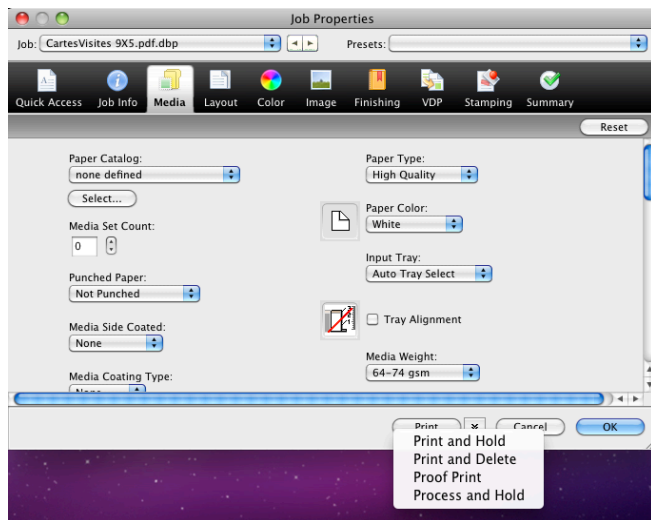


Figure 58: Print Actions extended

The Print Actions from Job Properties have been extended to include Print and Hold, Print and Delete, Process and Hold and Proof Print. This lets users do what they want with fewer clicks.

Customer Benefits

- Increases productivity and simplifies job submission with fewer steps in Command WorkStation.
- Saves time and clicks for actions performed every day in Command WorkStation.

Quick Access Tab Reminder

Customers often ask for a place to define their favorite settings. Since they can already do this in the Quick Access tab, they clearly didn't realize or remember it was there.

With Command WorkStation 5.3, a yellow Help balloon appears in the Quick Access tab to remind users to customize the tab. The yellow balloon disappears once users customize the tab or close the balloon box. By using the Quick Access tab in Job Properties, users can collect their most frequently used settings for fast and convenient printing with a click on one tab.

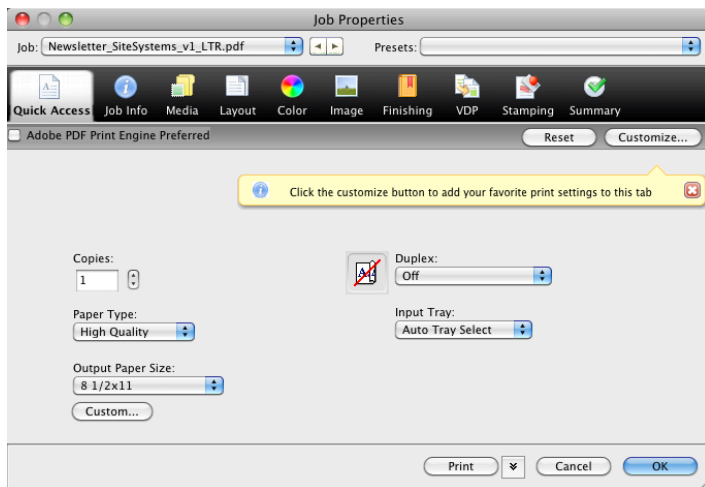


Figure 59: Quick Access Tab Reminder

Customer Benefits

- Increased productivity and usability by enabling users to collect and access frequently used Job Properties in one location.

Improved International Support

With System 10, users can change the language in Command WorkStation and Hot Folders — independent of the Fiery server. Each user can run Command WorkStation on their client workstation in the language they prefer by simply changing it in Preferences.

The Command WorkStation print job interface can also display the appropriate format for date, numbers, measurement units, default paper sizes and color profiles for European and Asian regions.

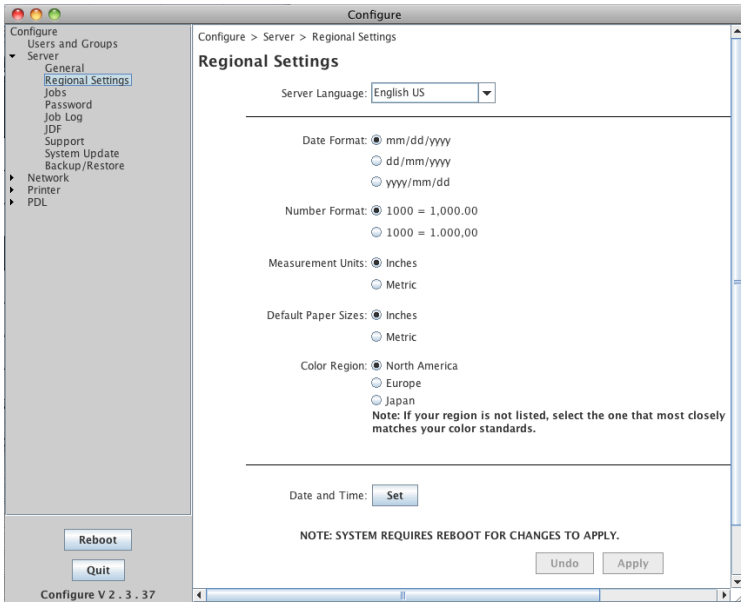


Figure 60: Configuring Regional Settings



Figure 61: Setting language preferences in Command WorkStation

In addition, System 10 now recognizes double-byte file names. Customers printing files with double-byte characters, such as those used in Chinese, Korean, Japanese, Hebrew, Turkish and Russian character sets, will now find their file names preserved correctly in Command WorkStation and the Job Log.

Held (6) Printed (10) Archived (2)						
	Job Title	User	Size	Pages	Copies	Date/Time
PDF	中国文件名.pdf	gretac	0.1 MB	1		Today 5:28:03 PM
PDF	Русский архив – имя.pdf	gretac	0.1 MB	1		Today 5:28:04 PM
PDF	보기가 만일 승인하기 위하여.pdf	gretac	0.1 MB	1		Today 5:28:04 PM
PDF	Если взгляд ОК.pdf	gretac	0.1 MB	1		Today 5:28:04 PM
PDF	Πρέττει να φωνείτε ΕΝΤΑΞΕΙ.pdf	gretac	0.1 MB	1		Today 5:28:04 PM
PDF	如果神色好.pdf	gretac	0.1 MB	1		Today 5:28:04 PM

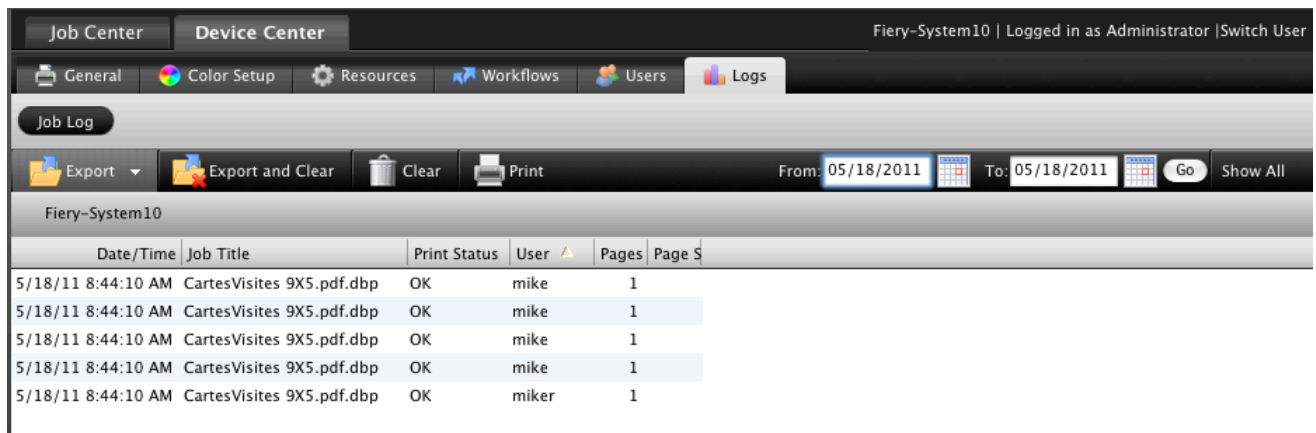
Figure 62: Double-byte file names on Command WorkStation

Customer Benefits

- Displays regional paper sizes and dates for a more user-friendly experience.
- Improves productivity during first-time language set up of server and Command WorkStation client.
- Provides flexibility to use Command WorkStation in the user's preferred language, regardless of Fiery server language.
- Improves usability in double-byte font environments.

Custom Job Log Export

With Command WorkStation 5.3, the Fiery server gained the capability to export data from a Custom Job Log. Users can customize the data in a Job Log by sorting the data by date, job title or user name. They can also filter data by a date range, and remove or add columns to show the information they want. Once a user creates a Custom Job Log, they now have the choice to export either the “Current View” or the “Complete Log.”



Job Center		Device Center		Fiery-System10 Logged in as Administrator Switch User	
General	Color Setup	Resources	Workflows	Users	Logs
Job Log					
Export	Export and Clear	Clear	Print	From: 05/18/2011	To: 05/18/2011 Go Show All
Fiery-System10					
Date/Time	Job Title	Print Status	User	Pages	Page S
5/18/11 8:44:10 AM	CartesVisites 9X5.pdf.dbp	OK	mike	1	
5/18/11 8:44:10 AM	CartesVisites 9X5.pdf.dbp	OK	mike	1	
5/18/11 8:44:10 AM	CartesVisites 9X5.pdf.dbp	OK	mike	1	
5/18/11 8:44:10 AM	CartesVisites 9X5.pdf.dbp	OK	mike	1	
5/18/11 8:44:10 AM	CartesVisites 9X5.pdf.dbp	OK	miker	1	

Figure 63: Custom Job Log view

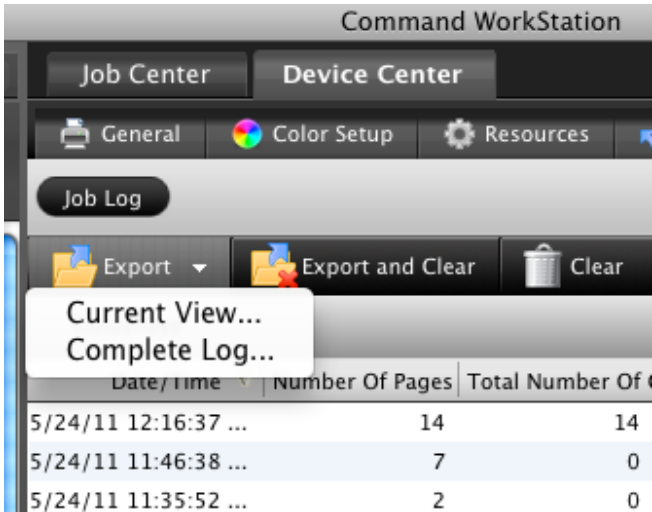


Figure 64: Export current view

Customer Benefits

- Easier and faster search for specific data in the Job Log.

Save Password and Auto Login

When connecting to the Fiery server, administrators and operators can save their password by checking the Save Password box. This way they can automatically login to the server from their client workstation, without having to type in their password every time — saving time and increasing productivity.



Figure 65: Login window

Additionally, users can enable “Auto Login” in Command WorkStation Preferences to allow the Command WorkStation to use saved passwords to automatically connect to all servers at launch. Auto Login delivers ease of use and saves time.

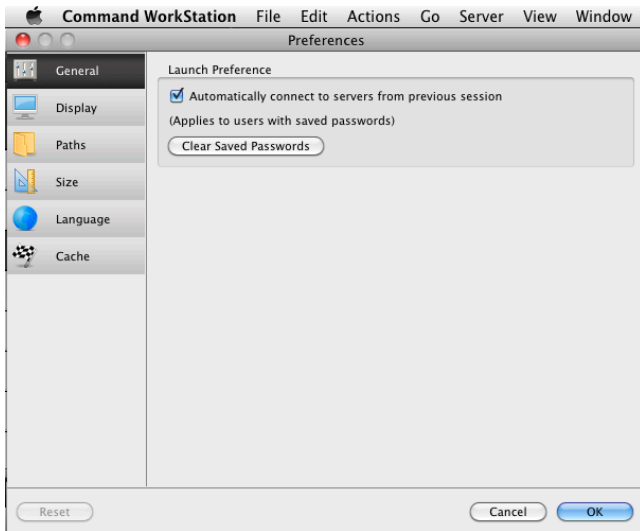


Figure 66: Selecting Auto Login in Command Workstation Preferences

Customer Benefits

- Command WorkStation Save Password prevents users from typing their passwords many times a day, providing improved usability.
- Auto Login saves time when Command WorkStation launches, by automatically connecting to all servers with saved passwords.

Improved Serviceability

Fiery System 10 greatly improves the speed of resolving technical issues by automating the transfer of all relevant information to technical support teams. It also reduces operation costs and speeds up installation and configuration processes with the following serviceability features:

- Improved server configuration sheet
- Job Error Report
- Backup and Restore enhancements

Improved Server Configuration Sheet

We've given the Fiery configuration sheet a makeover to improve readability and display more information.

At the top of the new configuration sheet, users now see commonly used items like server name, IP address and printer name (printer driver default name). If printing the configuration from a Windows® Fiery server, users will also see details of the Fiery applications and version numbers installed on the server — for example Fiery



Command WorkStation 5.3.0.54 or Fiery Hot Folders 3.3.0.29. This makes it easier for technical support staff to reproduce customer scenarios.

Users can print the Server configuration sheet or save it in a PDF or text format. When printing the server configuration sheet from the Command WorkStation Device Center, administrators can also choose Job Properties so they can print on whatever media is loaded in the trays.

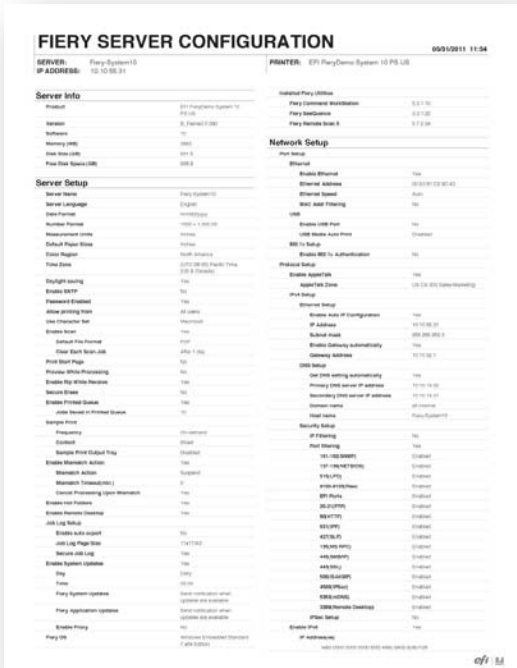


Figure 67: Improved server configuration sheet

Customer Benefits

- Improves usability by making it easy to access all necessary system information from one location or in one printed document.
- Lets administrators print the configuration sheet on any paper size or weight.

Job Error Report

The Job Error Report captures important troubleshooting information that EFI Technical Support personnel use to solve customer issues. This feature automates collection of the raster file, native file, color profiles, job logs, configuration sheet, job and job ticket, engineering logs and optional customer comments into a zip file users can save on the desktop with a simple click. By using this collected information, EFI Technical Support can provide faster problem resolution.

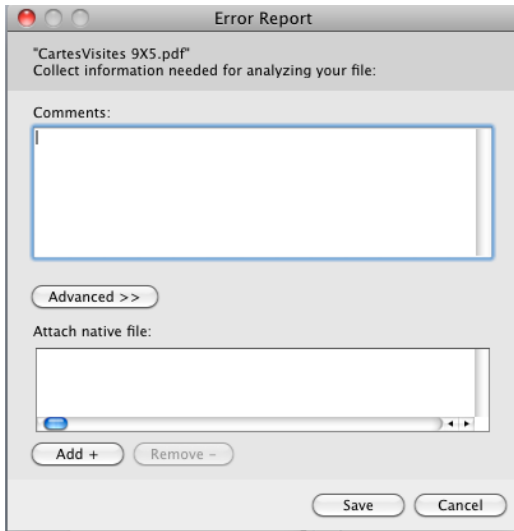


Figure 68: Creating a Job Error Report

Customer Benefits

- Easy communication of all necessary information to EFI Technical Support.
- Increased customer satisfaction from faster and easier resolution of problems.

Backup and Restore Enhancements

EFI has updated the Backup and Restore user interface to allow users to capture more settings. These include:

- Fiery System settings
- Color settings
- Preflight presets
- Scan settings
- Command WorkStation settings when backing up from Command WorkStation
- FreeForm/VDP resources
- Paper Catalog
- Virtual Printers
- Server Presets
- Fonts
- Job Log

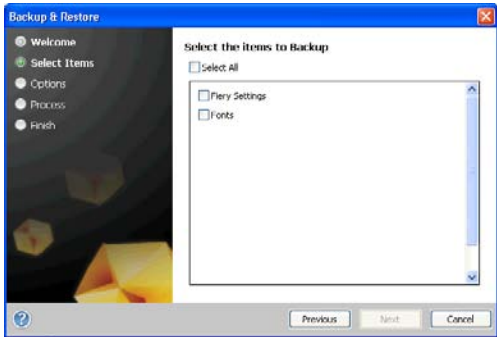


Figure 69: Server Backup functions before System 10

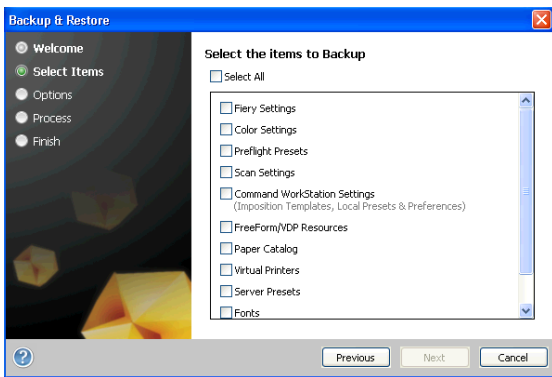


Figure 70: Increased server backup functionality in System 10

Backup and Restore in System 10 will accept backup files from earlier system versions back to System 8 Release 2. So, when clients upgrade their Fiery server to System 10, they can restore their settings later.

Customer Benefits

- Improved usability with a much more comprehensive and faster backup and restoration of a Fiery server.
- Faster and easier set-up. Administrators can back up individual items such as Virtual Printers, or Paper Catalog, and move them to other servers of the same model.
- When upgrading a Fiery server from System 8 Release 2 or higher, administrators can easily save and restore all the settings.

Integration

Microsoft Windows® 7 Professional for Embedded Systems (FES) x32/x64

Fiery System 10 servers are based on the Microsoft Windows 7 Professional FES x32/x64 operating system. This operating system complies with the latest corporate IT standards and provides more efficient administration and implementation of security patches.

Customer Benefits

- Satisfies with the latest IT and Government OS standards.
- Offers a more efficient administration and implementation of security patches since it supports automatic updates from Microsoft.
- Provides an extended support and maintenance life.

Paper Catalog Enhancements

Paper Catalog on the Fiery server is a saved collection of attributes associated with a specific media. Most frequently used attributes are paper type, paper weight, paper size and color profile.

JDF media specifications can have over 35 different attributes per media entry in the Paper Catalog. However, customers can now also use Paper Catalog with non-JDF workflows.

In this case, Fiery System10 provides users with the choice to create a Paper Catalog based on the engine's media attributes or PPD definitions. This means users see only a few choices that are specific to their printer when adding and viewing Paper Catalog entries. This new simple mode is designed to make Paper Catalog use faster and easier to use.

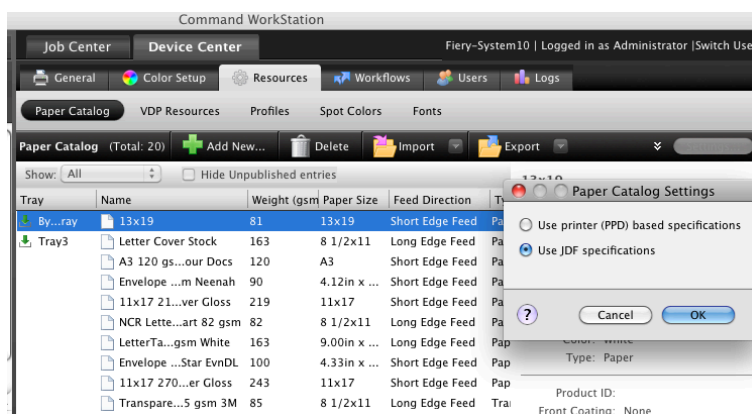


Figure 71: Operators have the option to chose a simplified mode to input new entries in Paper Catalog

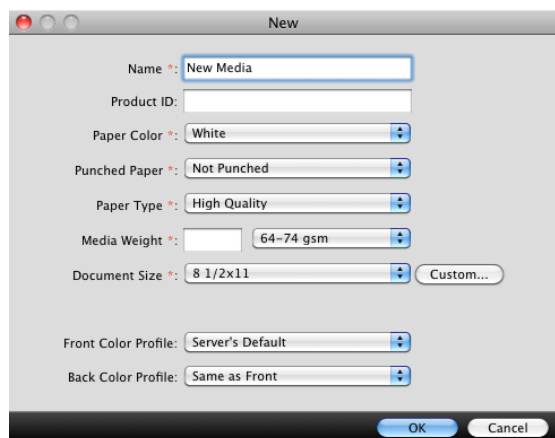


Figure 72: New Paper Catalog simple mode

With Fiery System 10, Paper Catalog functionality is now standard in embedded controllers for corporate and light production markets. It also features a simple mode to input new entries.

Customer Benefits

- Engine-driven media offers faster, easier setup.
- Setup is easier for non-JDF workflows.
- Paper Catalog for embedded controllers enhances productivity.
- Administrators can now define some options when adding entries in Paper catalog to enhance ease of use.
- Job Properties and bidirectional drivers can show which Paper Catalog entries are loaded in the printer trays.

Set Page Device Support

Set Page Device (SPD) refers to a group of PostScript commands that describe the printing characteristics of a file. They can include things like paper attributes, finishing options and the number of copies. SPDs are primarily used for specialized applications that require dynamic mixed-media or data-driven mixed media. One example is transactional applications that have a variable number of pages per document, and the media requirements can be different for each page.

SPD support enables Fiery servers to print files that have embedded SPD commands. The Fiery server can translate or map the paper attributes to specific trays and finishing options to specific output bins. This eliminates the need for human intervention, saves time, increases productivity and automates the customer's workflow.

Customers enable SPD in the Device Center, Configure, by selecting PDL and then SPD in the top left of the Configure window, and then checking the box "Enable Set Page Device Printing." For automation SPD can be



defined in Job Presets, Virtual Printers or Hot Folders. SPD commands are supported only in PostScript base languages (PS, VPS, VIPP) and are not device-dependent.

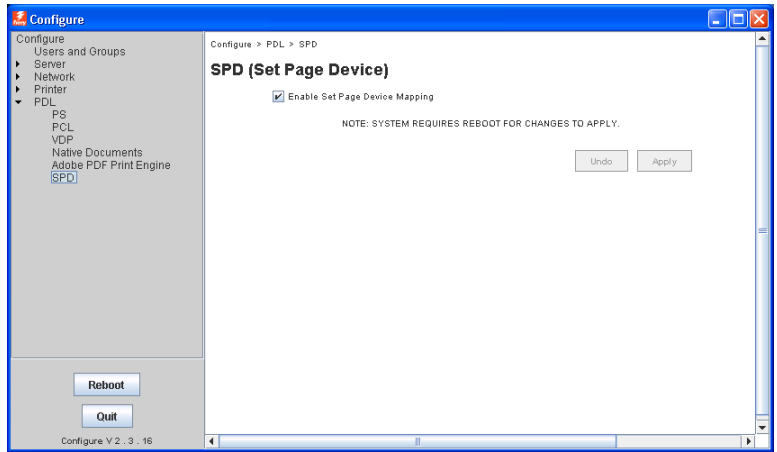
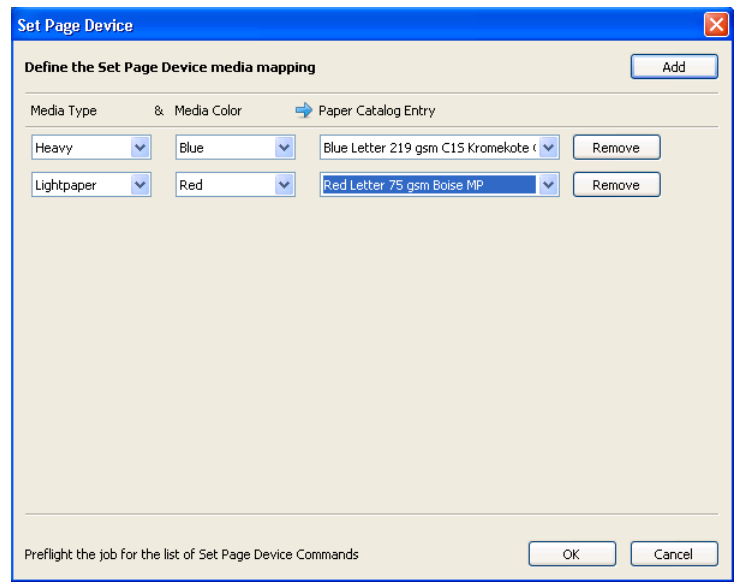


Figure 73: Enabling SPD in Configure

Once SPD Media Mapping is activated, operators need to define the actual Media Mapping and Finishing Mapping in Job Properties.



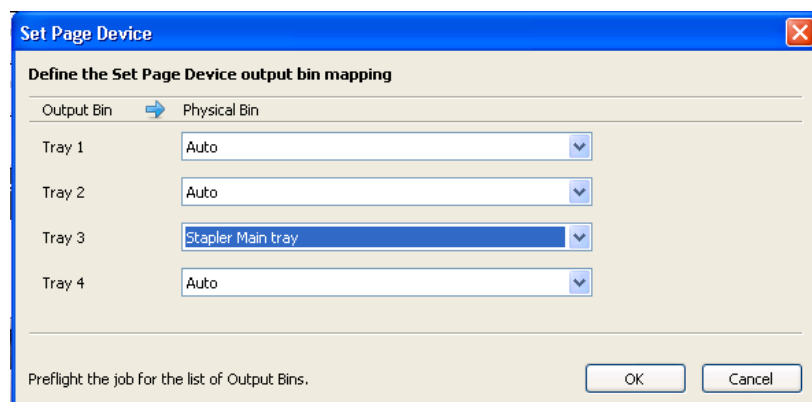


Figure 74: Defining media mapping and finishing mapping in Job Properties

If print operators want to see and verify the embedded SPD commands in the PDL file, they can use Fiery Preflight to generate a report of the SPD commands in the file.



Figure 75: Using Preflight to generate a report of the SPD commands in the file

Customer Benefits

- Increased productivity with support of user's existing workflow.
- Automatically prints SPD embedded files without operator intervention to save time and increase productivity.

Sequential Printing

Sequential Printing guarantees that jobs print following one another in first-in, first-out printing order — where the first job submitted is the first job printed. For example, in transactional printing, jobs need to be printed and mailed in a certain order. Another example is chapters in a book. Now, the Fiery server guarantees all jobs sent through the Sequential Print Queue print in the order submitted — with no smaller job that skips ahead of a larger job that is still spooling.

Users enable a Sequential Print Queue in the Configure Tool. In Configure, Sequential Print is listed under Printer, General settings, as shown in the screenshot below. The configuration of a Sequential Print Queue also requires the administrator to define a “time-out.” The time-out defines how long the Fiery server should wait for the next job in the sequential run before timing out and considering the run complete.

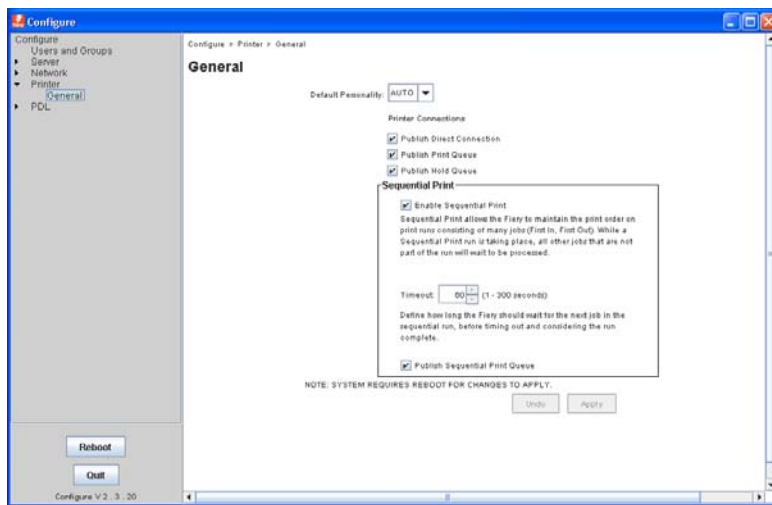


Figure 76: Enable the Sequential Print Queue in the Configure Tool

Once enabled, the system publishes a new default print queue called Sequential Print. Users can add new Virtual Printers and Hot Folders using the Sequential Print Queue, as shown in the screen shot below.

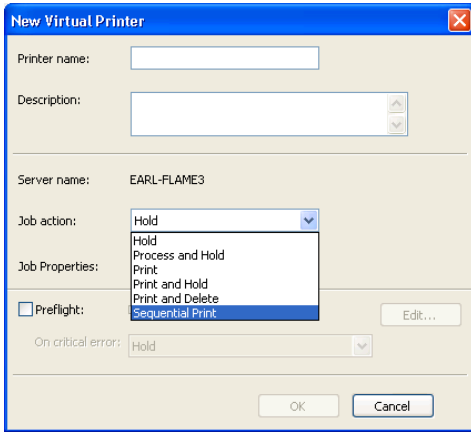


Figure 77: A new default print queue called Sequential Print is published

Sequential Print jobs can be submitted through Hot Folders, Virtual Printers, Command WorkStation (File Menu, Import Jobs) or directly through a network protocol such as SMB, LPR and Port 9100.

Sequential printing begins when the first file is spooled to the Sequential Print Queue. Each Sequential Print run will display a unique group ID icon. When a Sequential Print run starts, other print jobs will wait to process until the Sequential Print run is completed.

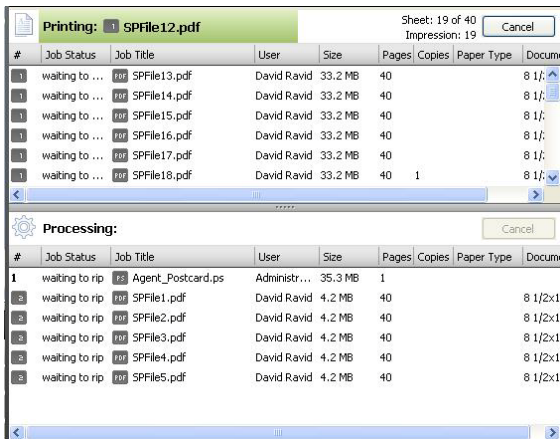


Figure 78: Identification of Sequential Print jobs in CWS

When a Sequential Print run is taking place, the Fiery server will still allow the operator to select actions such as Rush Print, Process Next, Print Next, Suspend on Mismatch, Preview, Hold and Cancel. These actions will override and disrupt the Sequential Print run.

Customer Benefits

- Increased productivity with support of user's existing workflow.
- Guaranteed printing of jobs that need to be printed in a specific sequence, such as variable printing applications for postal sort.

Direct Mobile Printing

All System 10 Fiery servers provide Direct Mobile Printing for Apple iOS devices. Wi-Fi enabled Apple iOS devices will automatically discover any System 10 Fiery Driven™ printer on the same network, inside the corporate firewall. Customers don't need to install any additional print driver or software for the iOS devices. Visitors and visiting remote employees can print using their Apple iOS device without looking for a printer or installing any print drivers. Local employees can print while moving around to different departments, conference rooms and other locations in the company on the same network.



Fiery Advantages

- Exclusive on Fiery servers running System 10.

Customer Benefits

- Visitors and visiting remote employees at a company with Apple iOS devices can easily print without any additional steps.
- Local employees with Apple iOS devices can move locations and easily print without any additional steps.
- Increased convenience of printing from Apple iOS devices.