



# Print a calendar booklet

Fiery FS600/FS600 Pro



## Feature overview

Fieri® Impose is a server-based imposition application option that streamlines and automates the imposition process, making production more efficient. Impose delivers imposition technology that is completely WYSIWYG and easy to use, with a full range of capabilities in one powerful package. By employing a workflow based on Adobe® Systems' Portable Document Format (PDF), Impose allows operators to create unlimited user-definable templates.

Documents with complex finishing requirements such as this calendar are good examples of applications with sophisticated layout preparation activities like changing the orientation of specific pages of a job.

## Objectives

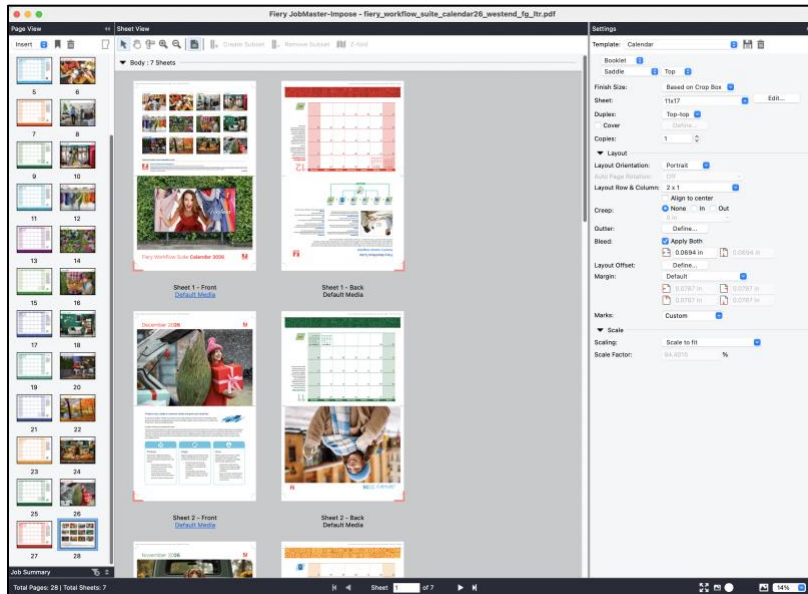
- Fieri Impose calendar
- Apply Job Properties including finishing to the imposed job

## Additional resources

For additional software downloads, training resources, and more, go to [Fieri Online Resources](#).

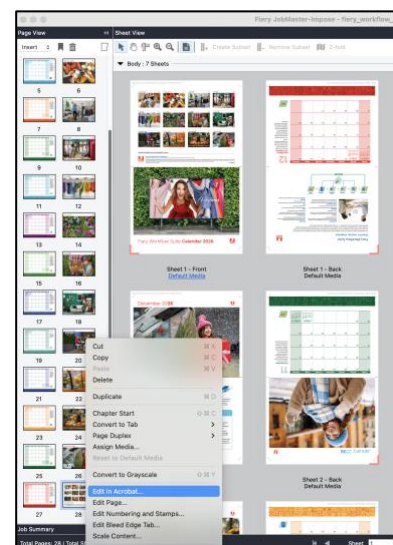
## Before you begin

- Open Fieri Command WorkStation® 6.8 or newer. Connect to a Fieri Driven™ printer running Fieri FS600 / FS600 Pro system software or newer.
  - Activate the Fieri Impose license on the computer running Command WorkStation. Fieri Impose can either be fully licensed or running in trial mode.
- To try out Fieri Impose, launch it from Command WorkStation and use Demo mode.
- Place the sample file, **fieri\_workflow\_suite\_calendar26\_westend\_fg\_itr.pdf** (or **A4** or **A4\_EU** versions), in the Fieri server HELD queue of Fieri Command WorkStation.
- Make sure that the printer and the Fieri server have been calibrated before printing any output.

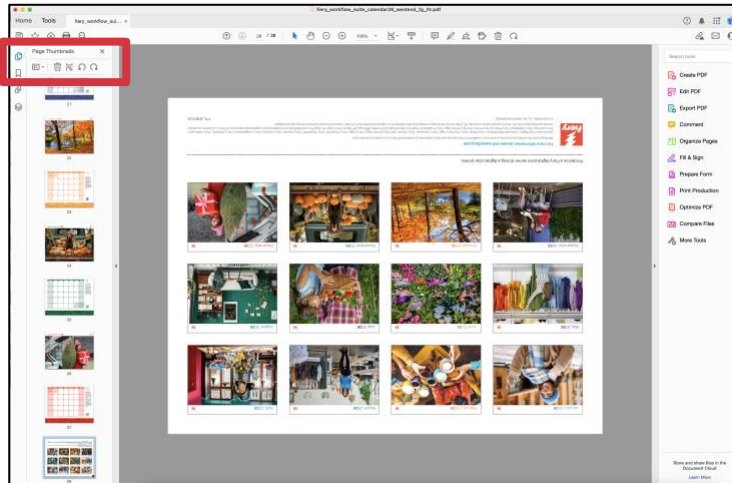


## Fiery Impose calendar

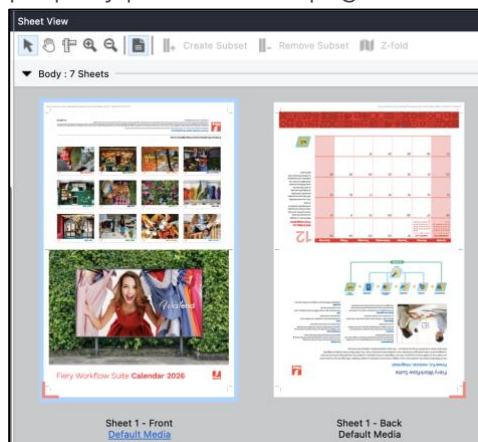
1. **Select** the **calendar booklet PDF file** of your choice in the Command WorkStation Held queue.
2. Then **right-click** and select **Impose**.
3. In the **Settings pane** at the right, select the **Template: 2-up saddle**.
4. Under the **Booklet** section, change **Left to Top**.
5. For **Sheet**, select **11x17 or A3**.
6. For **Layout Orientation**, select **Portrait**.
7. Next, to print the back page in the correct orientation when stapled and folded in half, we want to rotate it 180 degrees. **Right-click** the **last page 28** in the Page View panel, and click **Edit in Acrobat...**



8. In **Acrobat**, under the **Page Thumbnails**, rotate the last page **180 degrees**.

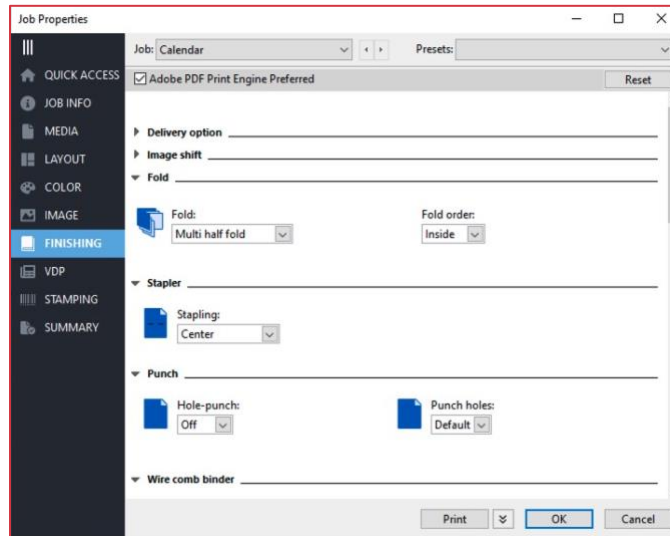


9. **Save** the PDF, and **close Acrobat**. The PDF preview has now updated inside Impose to properly print the back page.



10. The **remaining** settings in Impose can be left as the **default settings**.
11. Click the **Save** icon next to **Template** to save this new template for future use of similar jobs.
12. When the **Save Template** window opens, enter a name for this template. For this example, type **Calendar**, then click **OK** when done.
13. Then save it using the **File > Save** menu option and **name the job**, then click **OK** when done.

14. Click **File > Exit** or click the red **X** located in the corner to close Fiery Impose.
15. The new job will be saved in the Held list of Command WorkStation.



## Apply Job Properties including finishing to the imposed job

If your printer has a saddle-stitch finisher, use the steps below as a guideline for printing the calendar as a finished document.

Each printer will have specific settings to correctly print and finish the booklet. If you do not have a saddle-stitch finisher available, you can print the document can be printed to show the output and use an off-line finisher to complete the job.

1. Select the **imposed Calendar job** in the Held queue and **right-click** to select **Properties**.
2. When the Job Properties dialog opens, click the **Finishing** tab and assign the appropriate **Folding, Stapling, Page Order and Output tray** for your printer. Such as,
  - a. **Fold:** Multi half fold
  - b. **Stapling:** Center
3. Select **Print** to close the Job Properties and submit your job for printing.



For more information, please visit [fiery.com](https://fiery.com).



Nothing herein should be construed as a warranty in addition to the express warranty statement provided with Fiery, LLC products and services.

ColorGuard, ColorRight, Command WorkStation, ColorWise, Fiery, the Fiery logo, Fiery Compose, Fiery Driven, the Fiery Driven logo, Fiery Edge, Fiery Essential, Fiery HyperRIP, Fiery Impose, Fiery Impress, Fiery ImageViewer, Fiery Intensify, Fiery JobExpert, Fiery JobFlow, Fiery JobMaster, Fiery Prep-it, Fiery Prints, the Fiery Prints logo, Fiery TrueBrand, FreeForm, MicroPress, IQ, PrintMe, RIPChips, RIP-While-Print, Spot-On, Spot Pro, and WebTools are trademarks or registered trademarks of Fiery, LLC and/or its wholly owned subsidiaries in the U.S. and/or certain other countries. All other terms and product names may be trademarks or registered trademarks of their respective owners and are hereby acknowledged.

© 2026 FIERY, LLC. ALL RIGHTS RESERVED.