

# Fieri Command WorkStation

Make it your own!

---





# Welcome to today's webinar

## Housekeeping





# Today's team



**Joanna Portella**



Marketing Communications  
Manager



**Kerry Moloney**



Senior Product Marketing  
Manager



**Greta Conlon**

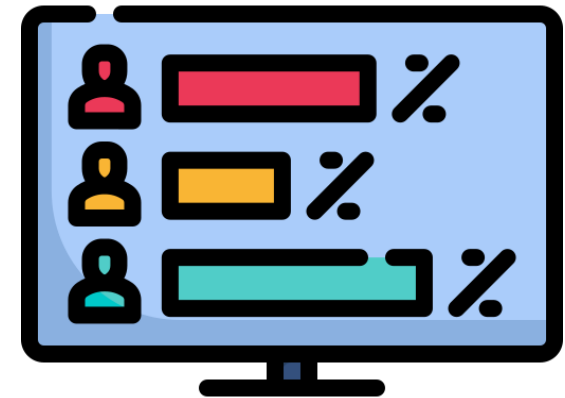


Product Owner:  
Fiery Command WorkStation

# Let's take a quick poll – #1



- What's your role in your organization?
  - Print Room Operator
  - Production Manager
  - Designer
  - Marketing
  - Shop Owner
  - Fiery Partner
  - Other
- How do you print to your Fiery Driven printer?
  - Driver
  - Command WorkStation
  - Hot Folder
  - Virtual Printer
  - Mixed



# Agenda

- Creating YOUR Fiery Command WorkStation
  - The basics
  - Your workspace
  - Job management and preparation
  - Server administration
- Learning more
- Q & A



# The basics

The vital things you really need to know to get the most out of Fiery Command WorkStation.

The screenshot displays the Fiery Command WorkStation interface. The top navigation bar includes the Fiery logo, a 'SERVERS' tab, and a clock icon. The main content area is divided into two sections, one for 'FieryColor1' and one for 'FieryDemo-Color'. Each section shows a summary of job counts and a progress bar for various job statuses. The 'FieryColor1' section shows 33 ALL JOBS, 28 HELD, 5 PRINTED, 0 PROCESSING, 0 PRINTING, and 15 COMPLETED. The 'FieryDemo-Color' section shows 50 ALL JOBS, 41 HELD, 9 PRINTED, 0 PROCESSING, 0 PRINTING, and 38 COMPLETED. The right sidebar shows the 'Idle' status and a list of job statuses, including 'Processed' and 'Spooled'.

Server	ALL JOBS	HELD	PRINTED	PROCESSING	PRINTING	COMPLETED
FieryColor1	33	28	5	0	0	15
FieryDemo-Color	50	41	9	0	0	38

Job Status Legend:

- Processed (Yellow icon)
- Spooled (White icon)

# Fiery Command WorkStation basics

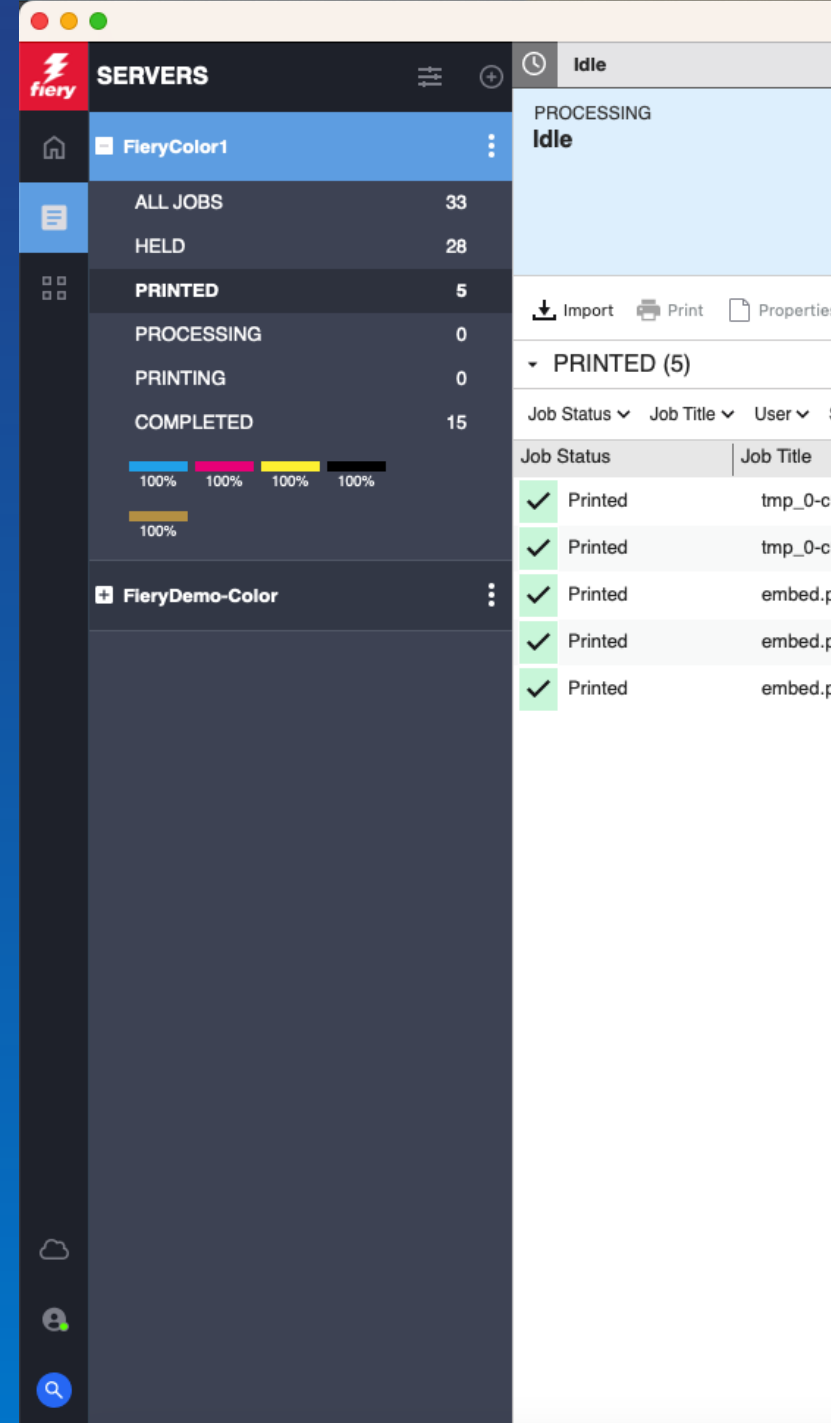


- It's free!
- Yearly, feature-rich upgrades
- Install as many times as you wish
- Cross-platform client
- Connect to multiple servers
- It's backwards compatible



# Your workspace

See exactly what you want to see, the way you want to see it.



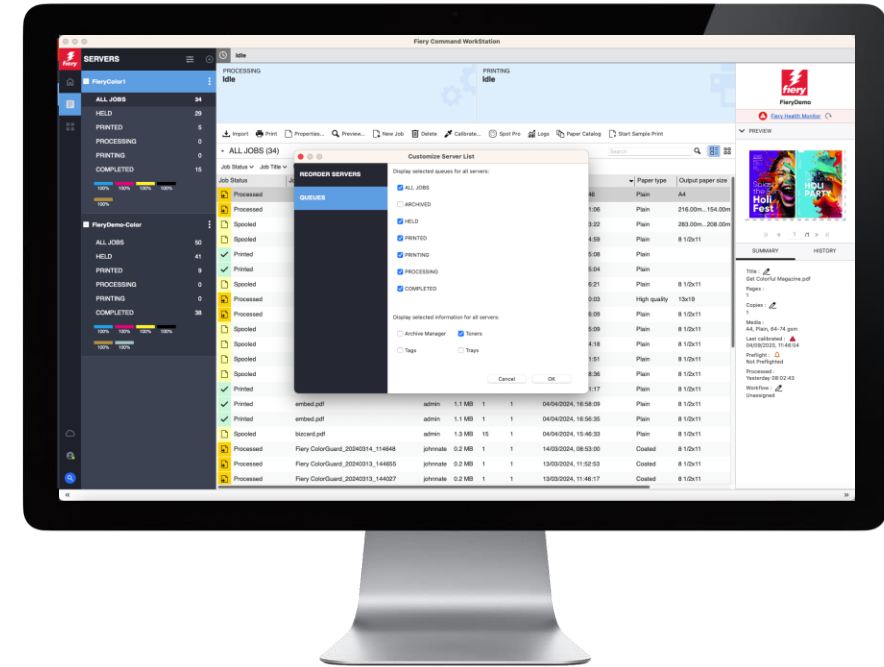
The screenshot displays the Fiery Servers application interface. The top bar shows the Fiery logo and the title "SERVERS". Below this, a sidebar on the left contains navigation icons for home, list, and grid views. The main content area is divided into two sections: "FleryColor1" and "FleryDemo-Color". The "FleryColor1" section shows a summary of job counts: ALL JOBS (33), HELD (28), PRINTED (5), PROCESSING (0), PRINTING (0), and COMPLETED (15). Below this, a color calibration bar is visible with four color patches (cyan, magenta, yellow, black) each labeled "100%". The "FleryDemo-Color" section is currently empty. On the right side, a panel titled "Idle" shows the status "PROCESSING Idle". Below this, there are buttons for "Import", "Print", and "Properties". A dropdown menu is open, showing "PRINTED (5)". Below the dropdown, a table lists job details with columns for "Job Status", "Job Title", and "User". The table contains five rows, all with a status of "Printed" and a job title of "tmp\_0-c" or "embed.p".

Job Status	Job Title	User
✓ Printed	tmp_0-c	
✓ Printed	tmp_0-c	
✓ Printed	embed.p	
✓ Printed	embed.p	
✓ Printed	embed.p	



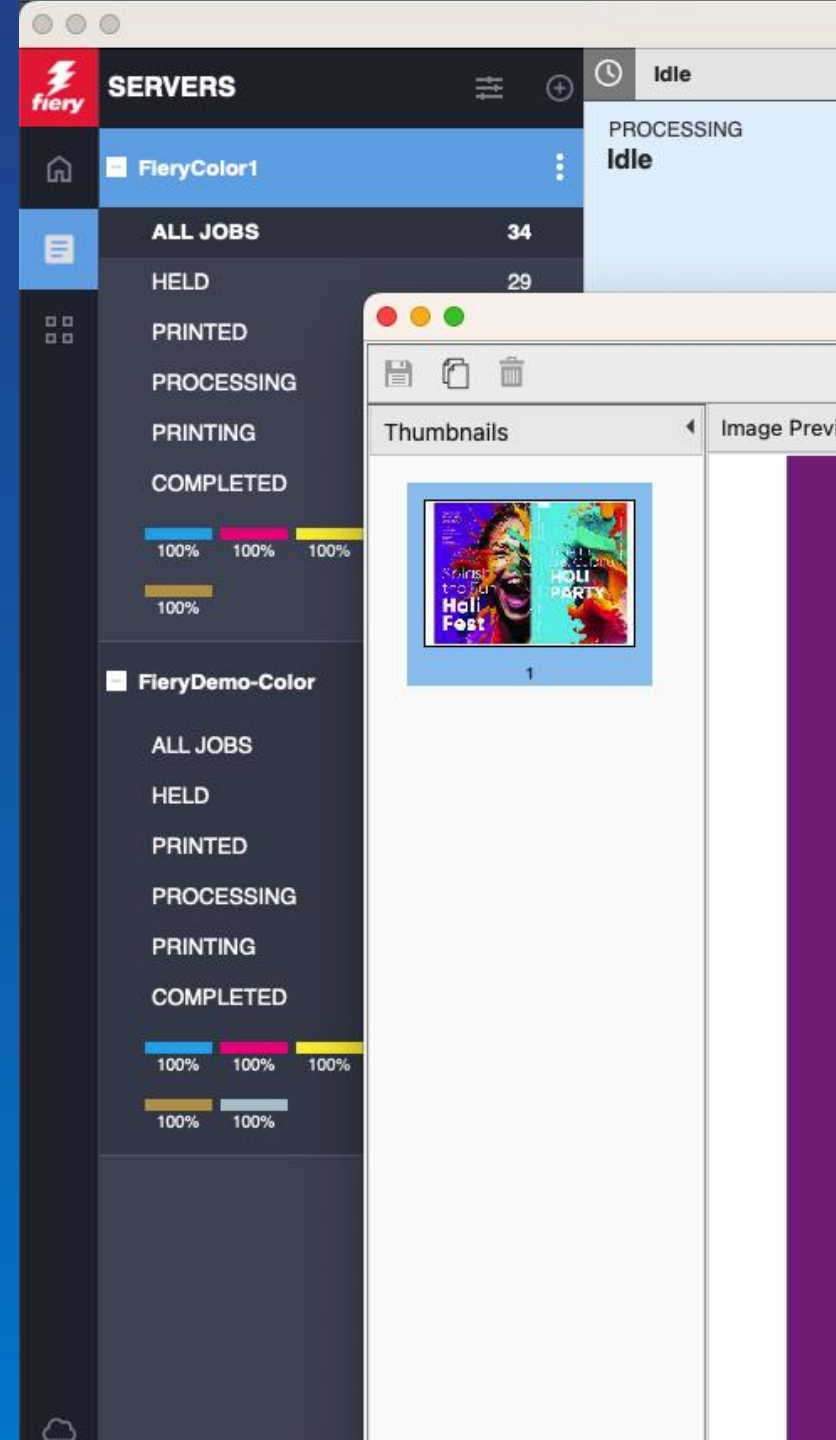
# Your workspace

- Customize server list
- Customize columns
- Customize toolbar
- Expand/collapse side panes
- View jobs by list or thumbnail
- Preferences
- Back up workspace settings



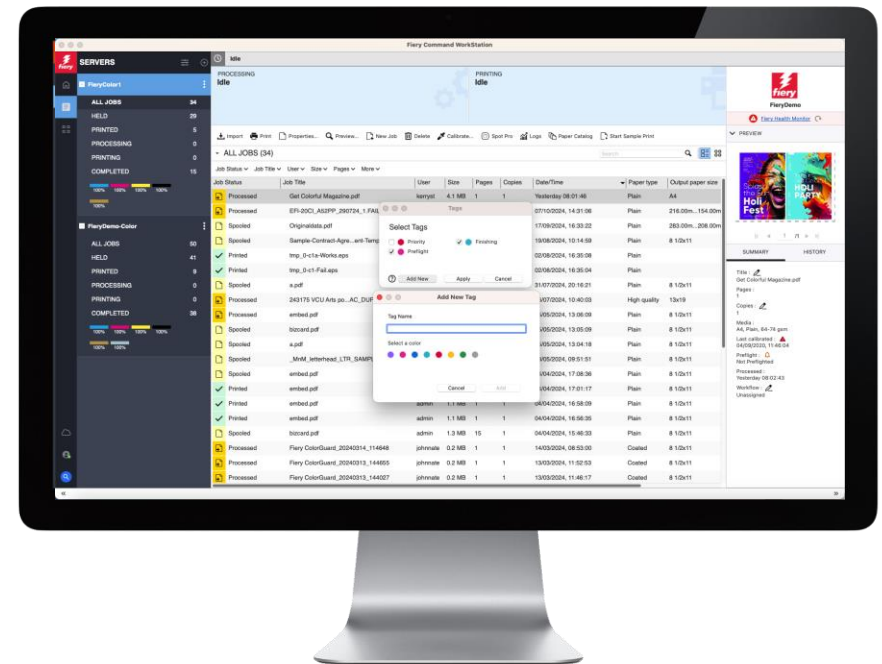
# Job management and preparation

Get jobs ready for print in the most efficient and reliable way.



# Job management and preparation

- Tags
- Setting up workflows
  - Presets, Hot Folders, and Virtual Printers
- Job Properties quick access
- Fiery Impose templates
- Customize Job Properties defaults

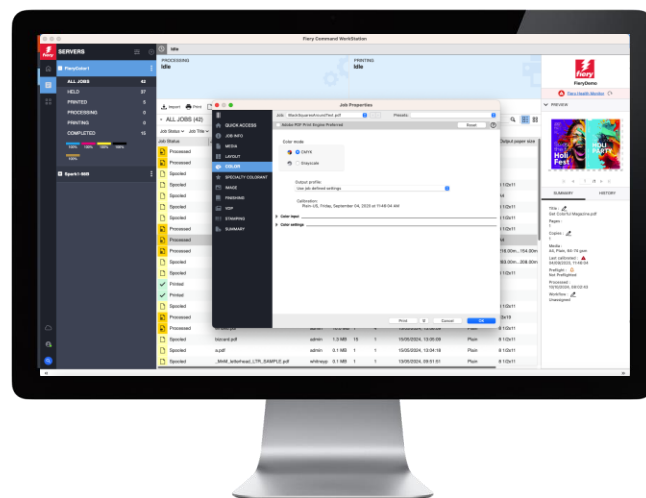




# Workflows

## Presets

- Job Properties settings



## Virtual Printers

- Job Properties settings
- Shared Printer

Optional:

- Fiery JobExpert\*
- Fiery Preflight\*
- Fiery JobFlow

## Hot Folders

- Job Properties settings
- File conversion
- Drag and drop files

Optional:

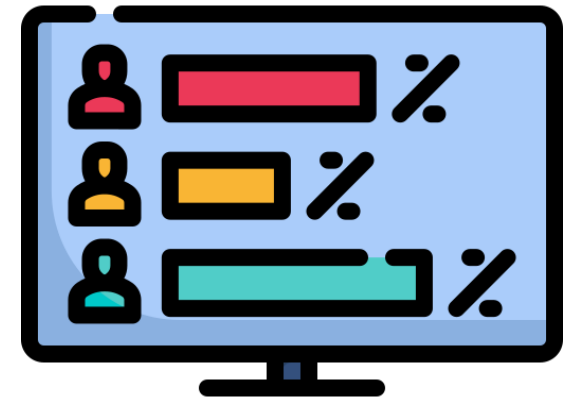
- Fiery JobExpert\*
- Fiery Preflight\*

\*On supported servers

# Let's take a quick poll – #2

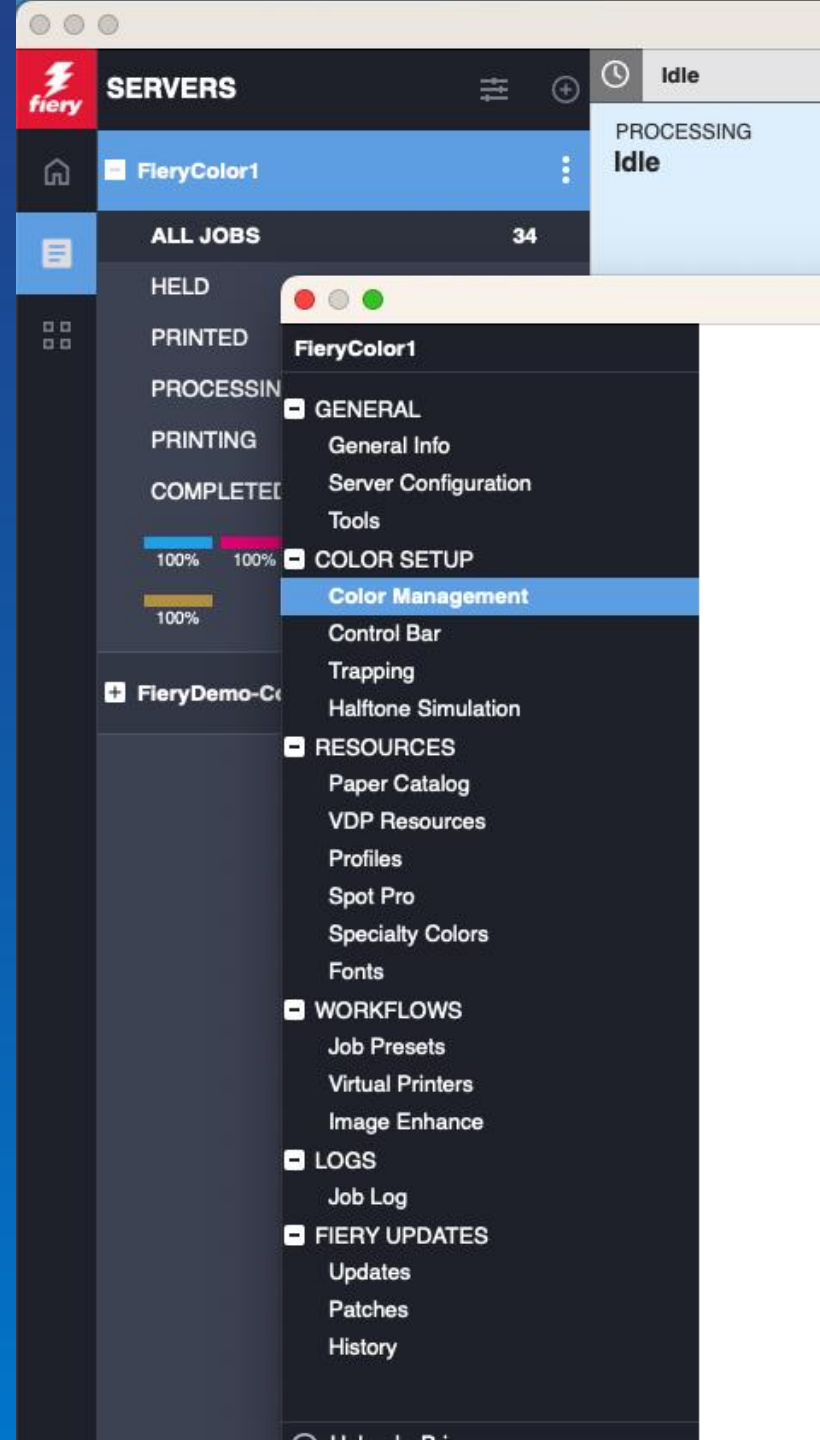


- How many Fiery servers do you have?
  - 1
  - 2-4
  - 5-10
  - 11+
- How do you automate print production?
  - We don't
  - Server Presets
  - Hot Folders/Virtual Printers
  - Fiery JobFlow
  - Another workflow solution



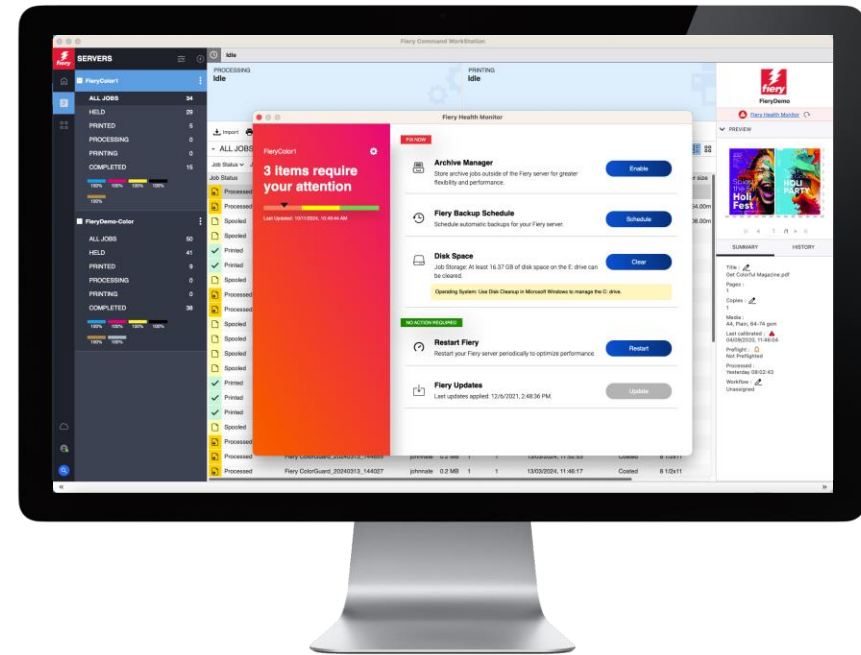
# Server administration

Manage servers effectively for maximum production uptime.



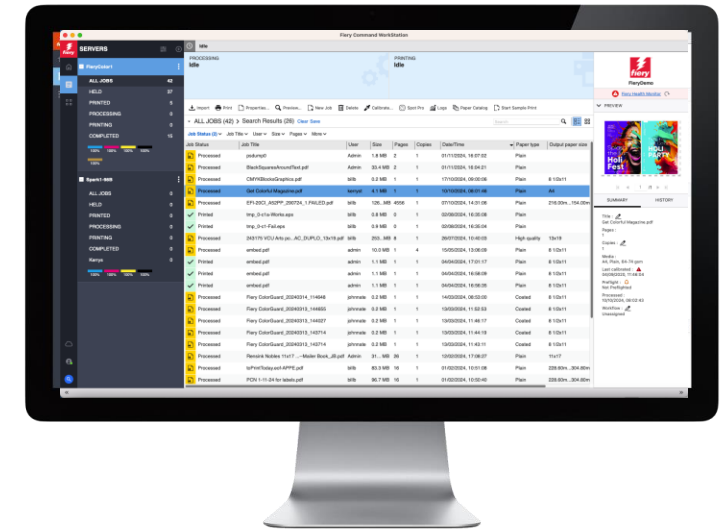
# Server administration

- Server settings
- Server backup & restore
- Client backup & restore
- Fiery Health Monitor



# Checklist

- Nail down your workflows
- Set auto backup on server (local HDD)\*
- Backup clients to cloud or local
- Store a backup image on an external USB drive





# Learning more

More than just an equipment investment.



Q Search for content

Fiery Products  
for Cutsheet

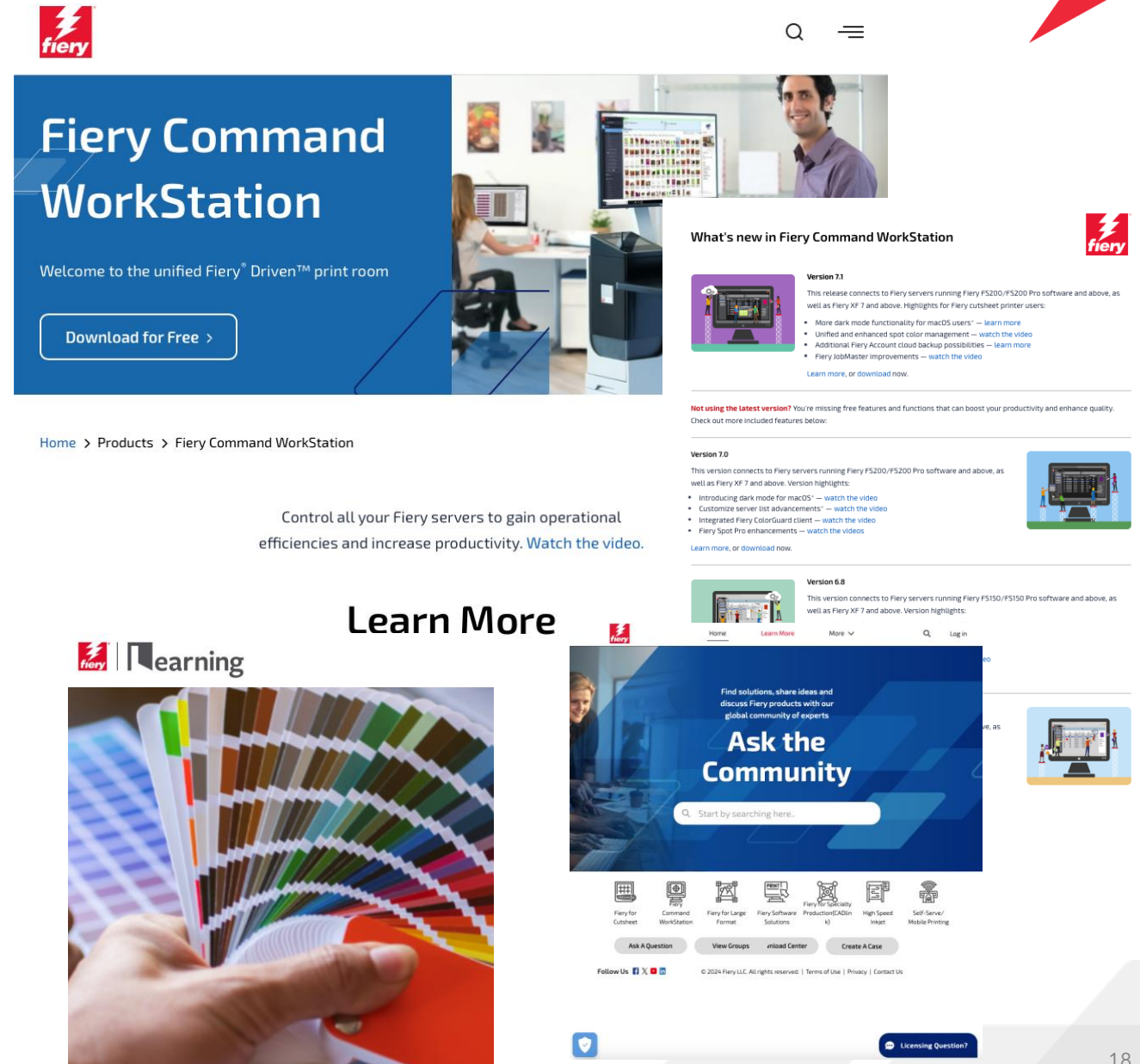
Learn More >

Fiery Products  
for Large Form

Learn More >

# Learning more

- [Fiery.com](https://fiery.com)
- [What's new page](#)
- Fiery eLearning courses
  - [Fiery 201](#): Introduction to Fiery Command WorkStation 7.1
  - [Fiery 202](#): Using Fiery Command WorkStation 7.1
- [Fiery Communities](#)
- [Fiery Command WorkStation keyboard shortcuts](#)



**Fiery Command WorkStation**

Welcome to the unified Fiery® Driven™ print room

[Download for Free >](#)

**What's new in Fiery Command WorkStation**

**Version 7.1**

This release connects to Fiery servers running Fiery FS200/FS200 Pro software and above, as well as Fiery XF 7 and above. Highlights for Fiery cutsheet printer users:

- More dark mode functionality for macOS users! — [watch the video](#)
- Unified and enhanced spot color management — [watch the video](#)
- Additional Fiery Account cloud backup possibilities — [watch the video](#)
- Fiery JobMaster improvements — [watch the video](#)

[Learn more, or download now.](#)

**Not using the latest version?** You're missing free features and functions that can boost your productivity and enhance quality. Check out more included features below:

**Version 7.0**

This version connects to Fiery servers running Fiery FS200/FS200 Pro software and above, as well as Fiery XF 7 and above. Version highlights:

- Introducing dark mode for macOS! — [watch the video](#)
- Customize server list advancements! — [watch the video](#)
- Integrated Fiery ColorGuard client — [watch the video](#)
- Fiery Spot Pro enhancements — [watch the video](#)

[Learn more, or download now.](#)

**Version 6.8**

This version connects to Fiery servers running Fiery FS150/FS150 Pro software and above, as well as Fiery XF 7 and above. Version highlights:

**Learn More**

**Fiery eLearning**

Find solutions, share ideas and discuss Fiery products with our global community of experts

**Ask the Community**

Start by searching here.

[Ask A Question](#) [View Groups](#) [Upload Center](#) [Create A Case](#)

Follow Us [Facebook](#) [Twitter](#) [LinkedIn](#)

© 2024 Fiery LLC. All rights reserved. | [Terms of Use](#) | [Privacy](#) | [Contact Us](#)

[Licensing Question?](#)

# Q & A

---

# Thank you for your time!

---