



# Digital Factory 12

Smarter color. Streamlined workflows.



Digital Factory

## Elevate colour. Simplify workflows.

Digital Factory 12 introduces the next generation of colour and control for DTF, DTG, and specialty print production. With new professional colour management tools, visual layout workflows, and intelligent automation, version 12 is designed to grow with the business—delivering superior output and future-ready support.

### FEATURE HIGHLIGHTS

#### FIERY COLOR PROFILER (ADD-ON)

Professional ICC profiling comes to Digital Factory. Powered by the same technology behind Fiery Edge™, this new add-on module enables precise printer calibration using supported spectrophotometers. Digital Factory 12 sets a new standard for colour management across the platform.



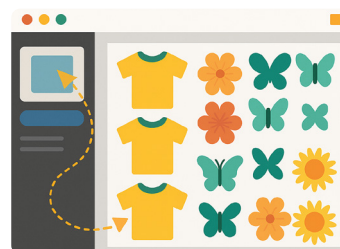
#### SATURATION RENDERING INTENT

A new rendering intent designed for the DTF and textile market. Enhances vibrancy—especially in mid-tones—while preserving natural detail in skin tones. This RIP-level improvement is selectable within the standard colour management controls.



#### GANG SHEET BUILDER

A redesigned layout experience built directly into version 12. The Gang Sheet Builder introduces a visual preview panel with drag-and-drop arrangement, auto-alignment, spacing controls, and automatic page closing. Ideal for fast-paced DTF workflows and replaces the previous auto-nesting method.





## ADDITIONAL UPDATES

- **New Printer Support:** Version 12 is the only version that will support newly released printers and cutters from 2026 onwards.
- **Print Length Marks:** Indicates how much of the roll a job used—helpful for cost tracking and identifying failures mid-print.
- **Pull Cut Mode:** Improved registration for thin films and complex shapes—especially near unsupported roll ends.
- **Screen Selector Tool:** Set screening method per queue to better match material and application needs.
- **Spot Color Management:** Includes up-to-date colour libraries with a new UI for spot color selection, including the latest PANTONE® definitions.
- **Mark System Rotation:** Support for additional mark orientations to suit a wider range of cutter and printer requirements.

### SMARTER COLOUR. STREAMLINED WORKFLOWS. BUILT FOR WHAT'S NEXT.

Digital Factory 12 redefines what's possible in specialty print production—now and into the future.

## System Requirements:

### RECOMMENDED SYSTEM REQUIREMENTS

Operating System	Windows 11
Memory	16GB RAM
Storage Space	SSD with 50GB of available space
CPU	Multicore Intel® or AMD processor, 3GHz or faster
Resolution	1080p

### MINIMUM SYSTEM REQUIREMENTS

Operating System	Windows 10
Memory	8GB RAM
Storage Space	HDD with 50GB of available space
CPU	Multicore Intel® or AMD processor, 1.7GHz or faster
Resolution	720p

### SMARTER COLOUR. STREAMLINED WORKFLOWS. BUILT FOR WHAT'S NEXT.

Fiery Digital Factory 12 redefines what's possible in specialty print production—now and into the future.



For more information, please visit [www.fiery.com](http://www.fiery.com)

Nothing herein should be construed as a warranty in addition to the express warranty statement provided with Fiery, LLC products and services.

ColorGuard, ColorRight, Command WorkStation, ColorWise, Fiery, the Fiery logo, Fiery Compose, Fiery Driven, the Fiery Driven logo, Fiery Edge, Fiery Essential, Fiery HyperRIP, Fiery Impose, Fiery Impress, Fiery ImageViewer, Fiery Intensify, Fiery JobExpert, Fiery JobFlow, Fiery JobMaster, Fiery Prep-it, Fiery Prints, the Fiery Prints logo, Fiery TrueBrand, FreeForm, MicroPress, IQ, PrintMe, RIPchips, RIP-While-Print, Spot-On, Spot Pro, and WebTools are trademarks or registered trademarks of Fiery, LLC and/or its wholly owned subsidiaries in the U.S. and/or certain other countries. All other terms and product names may be trademarks or registered trademarks of their respective owners and are hereby acknowledged.

© 2025 FIERY, LLC. ALL RIGHTS RESERVED.

FTL\_076.11.25