



# FIERY<sup>®</sup> JOBFLOW PRO

Print smarter. Automate everything.



AI-assisted workflow  
automation platform

# Smarter prepress automation starts here

Next-generation intelligent prepress automation for modern print shops.

## Manual prepress is a major bottleneck

When you're handling 50+ jobs a day, the real cost isn't ink or paper—it's the time skilled operators spend on repetitive tasks like checking files, inputting settings, routing jobs, and chasing status.

These manual touchpoints slow production, increase risk, and make it hard to scale without adding headcount, especially as skilled labor becomes harder to find.

### The challenges print shops face today:

- **Labor shortages:** Skilled operators are harder to hire and retain
- **Rising job volumes:** More jobs with shorter runs means more setup
- **Shrinking margins:** Every manual touchpoint eats into profitability
- **Pressure to scale:** Customers expect faster turnaround without higher prices

Automation isn't optional anymore, it's how you compete.



## Turn repetitive prepress into a competitive advantage

Workflow automation is now a top technology priority for print service providers because it's the only way to handle growing volumes without expanding teams or sacrificing quality.

The good news? Modern automation tools don't require IT expertise or complex programming—they're designed for print operators.

### What you can expect from prepress automation:

- **Cut setup time** from minutes to seconds for repeat jobs
- **Eliminate errors** that cause costly reprints and delays
- **Handle higher volumes** with the same team size
- **Free operators** to focus on quality, customers, and high-value work

With the right platform, automation becomes accessible, not intimidating.



# Introducing Fiery JobFlow Pro

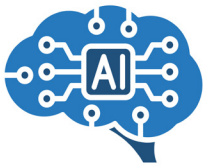
## AI-assisted automation that thinks like your best operator

Fiery JobFlow™ Pro is a next-generation workflow automation platform built for print shops that need to move faster with fewer touchpoints. Unlike static, rule-based systems, JobFlow Pro makes intelligent, real-time decisions based on actual job content, device status, and live production data.



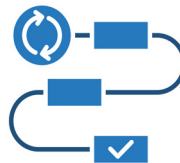
## What sets JobFlow Pro apart:

### AI that understands the job



Analyzes actual job content—not just filenames or metadata—to identify job type, route work correctly, and apply the right Fiery presets. It also translates complex preflight results into plain language operators can act on with confidence.

### Visual workflow design



Drag-and-drop workflow editor lets operators build and modify workflows without scripting knowledge or IT support. Add, remove, or reorder steps as your needs evolve

### Deep Fiery integration



Connects directly to Fiery servers, accessing presets, monitoring queue and device activity through Command WorkStation®, and integrating with Fiery makeready solutions to apply imposition and finishing steps consistently as part of the workflow.

### Built for speed and to scale



Engineered on a brand-new, high-performance architecture designed for speed, reliability, and scalability—from a single printer to multi-vendor fleets. Workflows adapt as your business changes without starting from scratch.

### Event-driven and Industry 4.0 ready



Goes beyond hot folders and static rules by responding in real time to Fiery server activity, barcode scans, IoT sensor input, time-based triggers, and shop-floor events. Built on open standards like MQTT, it supports connected, data-driven production environments.

# How Fiery JobFlow Pro works

## Automating job intake to press-ready output

Fiery JobFlow Pro automates the entire prepress workflow, from receiving files to submitting print-ready jobs. Here's how jobs flow through the system:

### 1. Job intake

Flexible submission and triggers

#### Jobs enter JobFlow Pro from multiple sources:

- Drop zones in the JobFlow Pro browser interface
- Hot folders monitored on your network
- Web-to-print storefronts and MIS/ERP systems
- Email attachments and cloud storage
- Job tickets from business systems

#### Workflow triggers beyond file submission:

- Fiery server activity monitoring (e.g., job completed, tray empty, queue status changes)
- Barcode scanning (e.g., scan to release next job in queue)
- MQTT messages from IoT sensors or devices (e.g., low paper indication, temperature changes, smart lighting alerts)
- Time-based schedules (e.g., release overnight work at the start of a shift, batch similar jobs during off-peak hours)

### 2. Analyze & classify

Identify job type

When a file arrives, JobFlow Pro's AI-assisted analysis inspects the actual content—not just the filename or job ticket metadata. It identifies job type (business cards, booklets, postcards, catalogs) and determines the appropriate workflow and Fiery preset settings to apply.

If no matching preset exists, JobFlow Pro prompts operators to create a new one for future reuse—helping streamline similar jobs and improve automation over time.

### 3. Preflight & correction

Catch issues early

Integrated callas pdfToolbox preflights PDFs checking for common print production errors such as low-resolution images, missing fonts, incorrect color spaces, and more. Issues are flagged and, where possible, corrected automatically.

**AI-assisted preflight explanations:** Technical preflight reports are translated into clear, plain-language summaries tailored to each operator's experience level, with actionable guidance on how to resolve issues.





## 4. Intelligent routing

Direct jobs automatically

Message-based logic and decision nodes route each job to the right workflow based on:

- Job category type
- Color requirements
- Priority level
- Device availability and queue status

Jobs are routed to the correct workflow, queue, or press without manual intervention.

## 5. Makeready & finishing

Automate layout and setup

Fiery JobFlow Pro integrates seamlessly with Fiery makeready tools to automatically apply imposition templates\*, barcodes, and finishing marks. Every job is prepared for print and finishing, delivering consistent, press-ready output.

## 6. Submission

Print jobs with confidence

Jobs are sent to the correct Fiery server or output destination with all job properties pre-configured, so every file is processed exactly as intended—without manual setup or operator intervention. From there, jobs can be:

- Printed immediately on the target press
- Held in a Fiery queue for controlled release
- Archived as a production-ready PDF
- Redirected if primary press is unavailable

## 7. Feedback & monitoring

Maintain visibility

Status and production data flow back into JobFlow Pro and integrated MIS systems, providing real-time visibility into:

- Job turnaround times
- Device utilization rates
- Workflow performance and bottlenecks
- Complete job history and audit trails







## Fiery JobFlow Pro awards and accolades



### 2025 PINNACLE PRODUCT AWARD WINNER

Fiery JobFlow Pro was recognized with the 2025 Pinnacle Product Award for Best Prepress & Premedia Software.



# Core workflow capabilities

## Automate every step from intake to output

Fiery JobFlow Pro delivers end-to-end prepress automation through a modular, visual workflow system that reduces manual touchpoints and ensures consistent output.



### File conversion & inspection

- Converts Microsoft Office documents, markdown strings, and images (JPEG, PNG, TIFF) into PDFs
- Uses AI-assisted analysis to inspect job content and categorize jobs



### Preflight & correction

- Inspect and troubleshoot jobs using callas pdfToolbox
- Clear, actionable preflight reports powered by AI



### Document assembly

- Combine multiple PDFs into a single document
- Split large jobs by page count or defined page ranges
- Extract, reorder, or duplicate pages



### Imposition & finishing

- Apply imposition templates such as booklet, N-up, gang-up (requires Fiery Impose license)
- Add finishing marks, barcodes, and job information



### Job routing & distribution

- Collect jobs based on specified criteria
- Route jobs based on content, customer, job properties, or preferred press
- Prioritize urgent jobs based on defined rules
- Automatically reroute jobs when devices are unavailable



### Color settings & image enhancement

- Apply accurate Fiery presets and color settings
- Define media assignments and mixed-stock layouts
- Correct job issues using callas pdfToolbox



### Output & archiving

- Submit jobs to Fiery print queues or hold them for controlled release
- Archive production-ready PDFs for fast reprints or reuse
- Export production data to MIS/ERP systems

# Build powerful automation without scripts or coding

Fiery JobFlow Pro workflows are designed and managed using JobFlow Pro Editor, a visual workspace that makes automation easy to build, understand, and scale.

## No advanced scripting required

Workflows are created by dragging modular building blocks—called nodes—onto a canvas and connecting them to define how jobs flow through production. Each node performs a specific task, such as watching a folder, converting files, running preflight, routing jobs, or submitting work to print. Configure the settings, connect the logic, and deploy—no programming knowledge required.

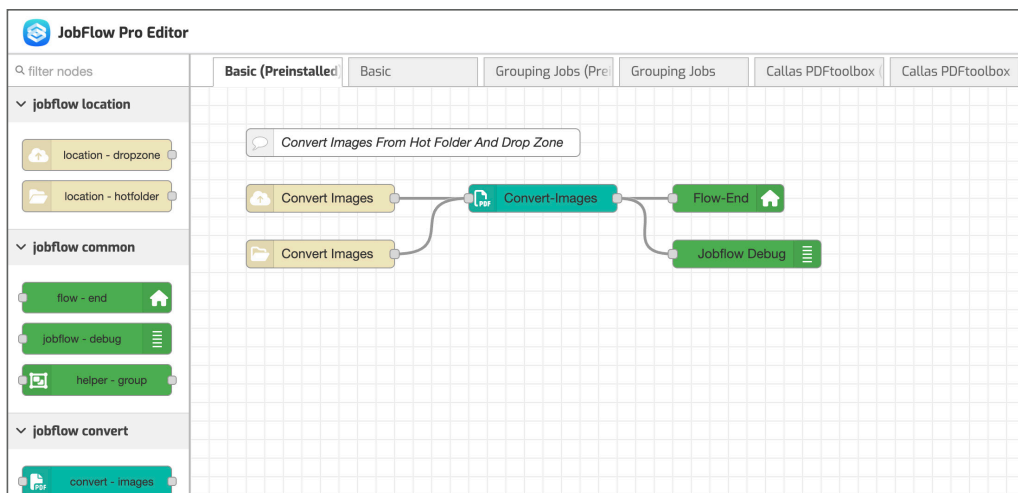
## Modular workflows that evolve with you

Workflows are built from independent nodes that pass structured messages between steps. This modular design lets you add, remove, or reorder steps without rebuilding the entire workflow. Need to insert an additional preflight check or update routing logic? Simply drop in a node and connect it, your workflow adapts instantly as requirements change.

## Empower your entire team

Clear, visual workflows and detailed job histories make it easy for operators, production managers, and technical staff to understand how jobs move through the system. Troubleshooting is faster, knowledge is shared more easily, and onboarding is no longer dependent on a single workflow expert.

Automation becomes a shared capability across your team, not something locked inside scripts or custom code.



Fiery JobFlow Pro Editor – Basic workflow





# Designed for real-world production

## Handle more jobs with the same team

Job volumes keep rising while run lengths shrink. JobFlow Pro transforms high-mix, short-run work into a repeatable, low-touch process.

Operators spend less time watching queues and fixing files, and more time on revenue-generating work. You grow production capacity without growing headcount.



## Keep production flowing when things change

Fiery JobFlow Pro monitors live Fiery server activity and shop-floor events and adapts as conditions change.

If a press goes offline, jobs are rerouted to available devices. If a paper tray runs low, operators are alerted. Scan a barcode, and the next job is released automatically—without manual intervention.



## Built for Industry 4.0 environments

Using open protocols like MQTT, JobFlow Pro connects Fiery DFEs, shop-floor sensors, cloud services, and business systems into a responsive automation framework.

It provides a strong foundation for smart-factory initiatives where live data, connected systems, and event-driven workflows are critical to staying competitive.



# AI-assisted intelligence—your data stays yours

## Smarter decisions, stronger privacy

Fiery JobFlow Pro uses AI to support intelligent prepress automation, helping your team work faster and more consistently. AI assistance is optional, privacy-focused, and designed for print production environments.



## How AI enhances JobFlow Pro:

### Content-aware job analysis

- AI evaluates actual job content, examining text, images, page layout, and structure, to accurately identify the job type, not just relying on filenames or metadata.

### Smart job routing and preset application

- Jobs are routed to the appropriate workflow and processed with the correct Fiery presets for consistent, repeatable results across your entire operation.

### Operator-friendly preflight explanations

- Complex preflight reports are translated into clear, plain language, with guidance tailored to each operator's experience level—from beginners to seasoned experts.

### Your data remains secure

- JobFlow Pro connects securely to your own private AI accounts, such as OpenAI or Claude, so you always retain full control of your data. Fiery never stores, accesses, or uses your customer files or proprietary production information. JobFlow Pro also prevents your data from being used to train external AI models, ensuring your workflows remain private, protected, and compliant.



# Get started with Fiery JobFlow Pro

## The impact you'll see

Shift from reactive file prep to proactive production—spend less time fixing problems, get more jobs right the first time, and drive stronger margins with Fiery JobFlow Pro.

- Cut manual job setup time
- Reduce prepress errors and costly rework
- Handle higher job volumes without adding staff
- Deliver consistent, print-ready jobs every time

## Ready to transform your prepress workflow?

### Request a personalized demo

See how JobFlow Pro works with your specific workflows and Fiery servers. Talk to a Fiery workflow expert.

### Start a free 30-day trial

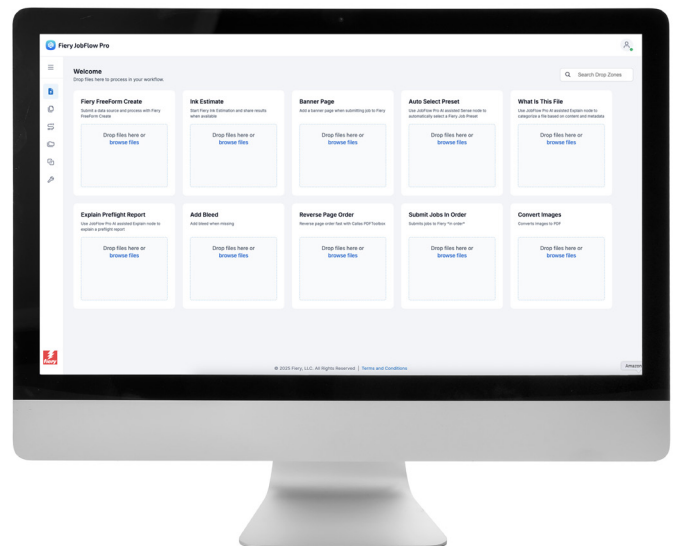
Experience JobFlow Pro in your own production environment. No commitment required.

### Contact your Fiery representative

Purchase JobFlow Pro through your authorized Fiery reseller.

### Learn more

Visit [fiery.com/jobflowpro](https://fiery.com/jobflowpro) for videos, how-to guides, technical documentation and more.





# Deployment, licensing, and support

---

## Minimum requirements

Check the latest requirements at [resources.fiery.com/jobflowpro/specs](https://resources.fiery.com/jobflowpro/specs).

## Supported printers

- Fiery JobFlow Pro can direct jobs to Windows-based Fiery servers running Fiery FS400 Pro and later, as well as Linux-based Fiery servers (requires Fiery Automation Package) running Fiery FS400 and later.

## Support and maintenance

- A one-year Software Maintenance and Support Agreement (SMSA) is included with the purchase of Fiery JobFlow Pro. The SMSA entitles you to the latest updates and upgrades. You can also access technical support by phone and email.

## Installation

- Download and install Fiery JobFlow Pro through the Fiery Software Manager. The application is installed on a Windows computer and acts as a Fiery JobFlow Pro server. After successful installation, you can access JobFlow Pro from a shortcut on your desktop or from your favorite browser.

## Licensing

- JobFlow Pro uses flexible subscription licensing with 1–5 year terms. A single license supports multiple Fiery servers across your operation.

---

## Learn more

Visit [fiery.com/jobflowpro](https://fiery.com/jobflowpro) to learn more.



For more information, please visit [www.fiery.com](https://www.fiery.com)

Nothing herein should be construed as a warranty in addition to the express warranty statement provided with Fiery, LLC products and services.

ColorGuard, ColorRight, Command WorkStation, ColorWise, Fiery, the Fiery logo, Fiery Compose, Fiery Driven, the Fiery Driven logo, Fiery Edge, Fiery Essential, Fiery HyperRIP, Fiery Impose, Fiery Impress, Fiery ImageViewer, Fiery Intensify, Fiery JobExpert, Fiery JobFlow, Fiery JobMaster, Fiery Prep-it, Fiery Prints, the Fiery Prints logo, Fiery TrueBrand, FreeForm, MicroPress, IQ, PrintMe, RIPChips, RIP-While-Print, Spot-On, Spot Pro, and WebTools are trademarks or registered trademarks of Fiery, LLC and/or its wholly owned subsidiaries in the U.S. and/or certain other countries. All other terms and product names may be trademarks or registered trademarks of their respective owners and are hereby acknowledged.

© 2026 FIERY, LLC. ALL RIGHTS RESERVED.

FTL\_006.01.26