

FIERY® XF



RIP, colour management, layout, and workflow
for large format print production



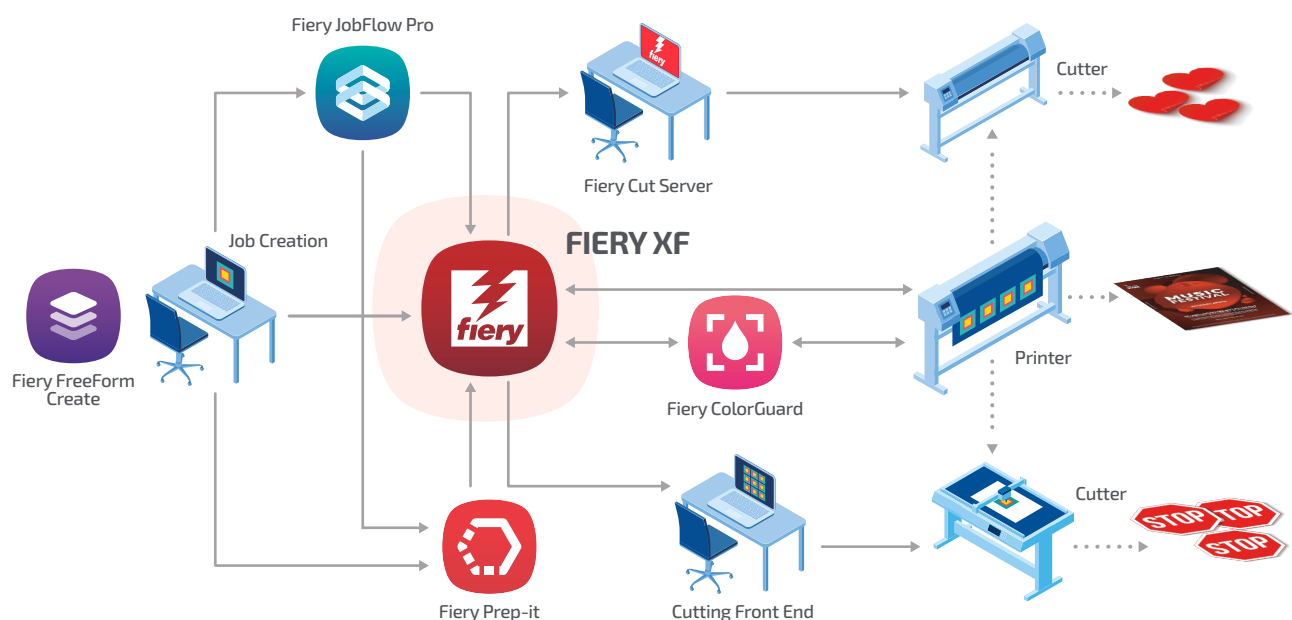
Precise,
productive,
profitable print
production

The hub of your large format print production

Fiery® XF is the only RIP solution on the market that serves both the professional proofing and production print markets from a single platform.

A RIP, and so much more

From built-in colour management and production tools to seamlessly integrated add-ons for print-and-cut preparation, variable data creation, prepress workflow, and more. Fiery XF is the central hub of the most complete end-to-end solution on the market for all types of large-format print production.



A scalable solution that can grow with your business

Start with the configuration that fits your print production today, and scale as you grow. Fiery XF can adapt to your evolving needs — whether you're adding larger printers, integrating the latest cutting technology, or introducing ink saving — everything can run seamlessly from a single, scalable Fiery XF server.

Configurations

Fiery XF Proofing (Includes 1-Year SMSA)
Fiery XF Production (Cut Marks) (Includes 1-Year SMSA)
Fiery XF Production (Cut Server) (Includes 1-Year SMSA)

Included Options:

&	Color Profiler & Color Verifier Option
&	Color Profiler & Cut Marks Option
&	Color Profiler & Cut Server Option

Printer Option:

+	Required (Minimum 1)
---	--------------------------------

All Fiery XF configurations include a Fiery XF Server license, spot colour support, FAST RIP technology, and unlimited installations of Fiery Command WorkStation, plus a 1-Year Software Maintenance and Support Agreement (SMSA).



Fiery XF fundamentals

Solid foundations that future-proof your investment



Fiery XF was recognised with the 2025 Pinnacle Product Award for Best RIP.

Fiery XF's modular architecture is built on a strong commitment to industry standards and standardisation. From the integrated Adobe PDF Print Engine (APPE) to support for the latest print industry specifications, Fiery XF ensures you stay compatible, compliant, and up to date.

BUILT-IN CAPABILITIES

Workflow:

- On-the-fly job edit
- Semi-automatic job processing
- Fully-automatic production

Productivity:

- FAST RIP technology
- Parallel and multi-processing

Production:

- Automatic and manual nesting
- Tiling
- Step and Repeat
- Variable data
- Barcode creation
- Late-colour editing
- Cropping, scaling, rotating, mirroring, inverting, alignment
- Crop marks and grommet marks
- Bleed generation

Colour:

- Calibration
- Profiling and optimisation
- Spot colour management

JOB INPUT

Source:

- Hot Folders
- Universal Driver
- Direct Import
- Fiery JobFlow
- Fiery Prep-it
- Job submission through JDF

FIERY XF PRODUCTION & PROOFING

- Client / server architecture
 - Windows server
- Cross platform client (macOS / Windows)

PRODUCTION OUTPUT

Printer support:

- Multi-printer support
- 2,600+ models

Cutter support:

- Multi-printer support
- 2,100+ models
- Roll-to-roll (Cut Server)
- Flatbed (Cut Marks)

Output types:

- Contone
- Halftone

FIERY XF OPTIONS

- Printer Options ((2-7) 1 required)
- Color Verifier Option*
- Cut Server Option**
- Cut Marks Option***
- FAST Processing Option
- One Bit Option
- Ink Saving Option

SOFTWARE ADD-ONS

Free:

- Fiery FreeForm™ Create

Chargeable:

- Fiery Prep-it™
- Fiery ColorGuard™
- Fiery JobFlow™

BEYOND TECHNOLOGY

Fiery helps you stay current with free, award-winning online learning, webinars, podcasts, blogs, Fiery Communities, and more — so your expertise evolves along with your workflow.

*Color Verifier is included with Fiery XF Proofing, and available as a chargeable option for Fiery XF Production configurations

**Cut Server Option is included with Fiery XF Production (Cut Server), and available as a chargeable option for Fiery XF Production (Cut Marks), and Fiery XF Proofing

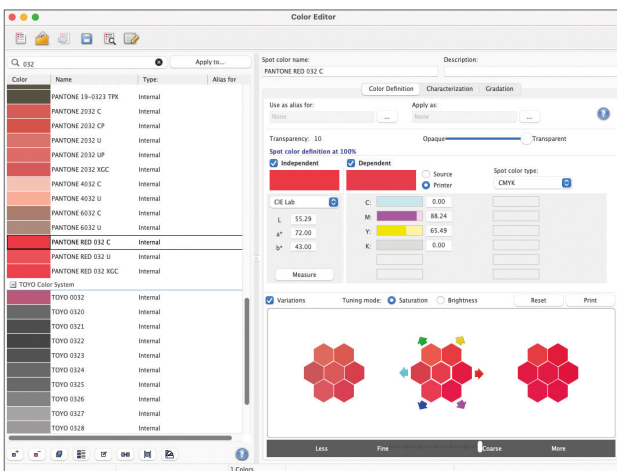
***Cut Marks Option is included with Fiery XF Production (Cut Marks), and available as a chargeable option for Fiery XF Production (Cut Server), and Fiery XF Proofing

Built-in colour capabilities

Fiery XF delivers the fastest path to exceptional colour. Proof-grade colour controls ensure industry-standard results across a wide range of applications. Fiery-developed ICC colour management, combined with advanced spot and process colour optimisation, provides superior colour accuracy, quality, and control — fast and accessible to users of all skill levels.

Calibration, profiling, and optimisation

Accurate calibration in just a few easy steps sets the the best baseline for a perfect profile. Based on Fiery Color Profiler Suite, Fiery XF's profiling capabilities are wizard-driven, making colour management with Fiery suitable for experts and novices alike. Profile optimisation is iterative and ICC-based, providing the best of both worlds — profile compatibility and advanced fine-tuning.



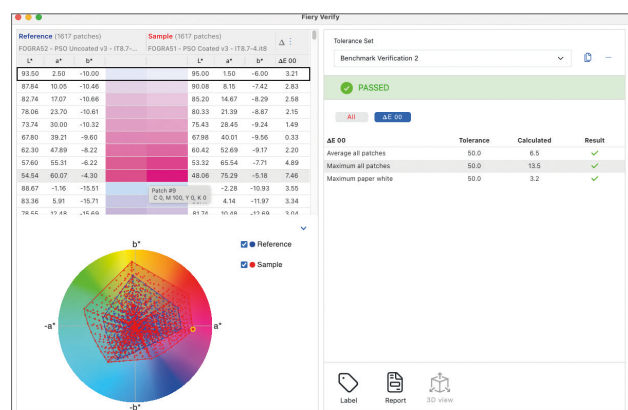
Spot colour management and control

Achieve precise, consistent brand colours with Fiery XF's advanced spot colour management, including access to the latest built-in PANTONE®, HKS®, HKS® 3000+, Toyo®, and DIC® libraries. Create unlimited custom colours, control transparency and gradations, and accurately characterise and optimise both spot colour solids and tints by measurement.

Print spot colour variations and swatch books to ensure your results meet both your and your customers' expectations. With customisable overprinting and print sequencing for spot and process colours, Fiery XF delivers maximum flexibility and professional-quality output.

Output verification*

Maintain precise colour accuracy and consistent results with Fiery XF's advanced colour verification tools. Use the latest ISO, G7, SWOP, and GRACoL®-compliant profiles with full support for Fogra, Idealliance®, and Japan Color® control strips. Dynamic Wedge™ enables job-specific control strips for easy verification of process and spot colours, ensuring compliance with standards such as ISO 12647-7, ISO 12647-8, and Fogra PSD, while supporting M0, M1, and M2 measurement conditions and the XGRA standard.

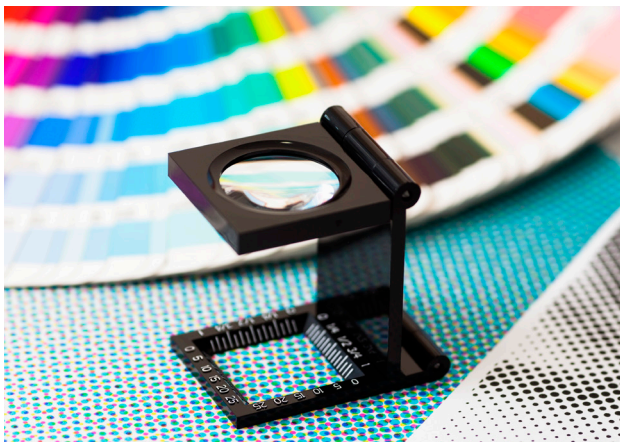


*Color Verifier is included with Fiery XF Proofing, and available as chargeable option for Fiery XF Production



Intelligent and dynamic colour

Achieve outstanding results with minimal effort using Fiery XF's advanced colour innovations. Dynamic Rendering Intent automatically selects the optimal gamut mapping for each image, while the Clean Colors feature intelligently "purifies" colours for maximum accuracy. Dynamic Smoothing ensures smooth process and spot colour gradations and reduces compression artifacts, delivering professional-quality output with ease.



Output simulation*

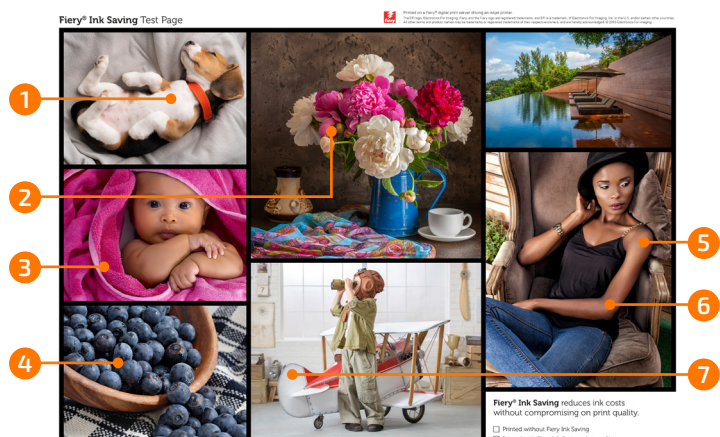
Simulate final print results with confidence using accurate halftone contract proofing based on OneBit data files with the OneBit Option*. Colour-accurate halftone proofs precisely predict screen dot geometry, allowing visualisation of moiré patterns, dot gain, trapping issues, and other critical print behaviors.

Output simulation also reveals final run characteristics such as missing dots, first printable dot, and output noise, while enabling reliable content and imposition layout checks before plates or film are imaged — helping prevent costly errors before production.

Ink saving**

Save costs and increase profits by intelligently reducing ink usage — without compromising image quality. Advanced ink-saving profiles can deliver up to 40% ink reduction while preserving the optimal visual standards required for every job. Highlights and shadow details remain intact, colours stay vibrant and accurate with no hue shifts, and contrast and dynamic range are fully maintained. Smooth gradations, natural-looking skin tones, and clean, grain-free images ensure professional, high-quality results that look just as good as they perform.

- 1 No reduction in highlight or shadow details
- 2 No loss of saturation or vividity
- 3 No hue shift of colours
- 4 No loss of contrast or dynamic range
- 5 No gradation artefacts
- 6 No unnatural-looking skin tones
- 7 No introduction of image graininess



*The OneBit Option is a chargeable option for Fiery XF
**The Ink Saving Option is a chargeable option for Fiery XF

Complete production toolset

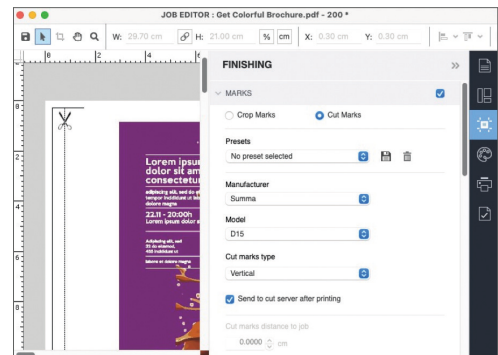
From built-in visual tools for essentials like cropping and scaling to advanced nesting and tiling, everything you need to prepare and execute a print job is available within the Fiery production workspace — no need to switch applications.

Production essentials

Fiery XF's in-RIP production tools eliminate the need for upstream job layout. From within the Fiery workspace, you can manage comprehensive tiling, manual or automatic nesting, late-stage image and colour adjustments, advanced step-and-repeat — including textile patterns — barcode creation, and crop or grommet mark setup, all from a single, intuitive platform.

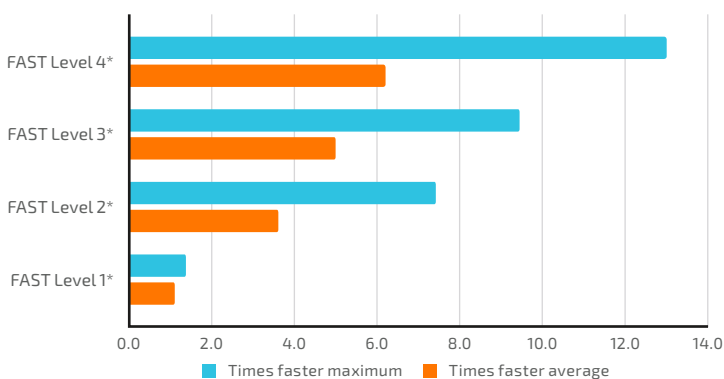
Cut Server Option*

The Cut Server Option for roll-to-roll cutters increases your productivity by seamlessly connecting your job output and your finishing processes. It lets you drive up to two cutting engines in parallel to meet those tight turnaround times. In addition, this automated solution standardises your cutting workflow for all supported cutter types and models.



Cut Marks Option**

The Cut Marks Option for flatbed cutters generates and places marks, extracts multiple cut paths, and connects seamlessly to the ZündCut Center for an automated, error-free workflow. It supports i-cut output for flexible third-party cutting and can automatically create Code 39 and QR barcodes for cutters like Kongsberg, Summa, and Zünd.



FAST Processing Option***

The FAST Processing Option accelerates job processing by an average of 6 times and up to 13 times to keep printers running at capacity to maximise printer investments. Performance gains are dependent on the FAST Processing level used.

Flexible workflow possibilities

Fiery XF lets you prepare jobs for print manually, semi-automatically, or fully automatically, catering for all job types, workflow needs and preferences.

*The Cut Server Option is a chargeable option for Fiery XF Production (Cut Marks) and Fiery XF Proofing

**The Cut Marks Option is a chargeable option for Fiery XF Production (Cut Server) and Fiery XF Proofing

***The FAST Processing Option is a chargeable option for Fiery XF



Fiery software add-ons for large format



Fiery Prep-it Print-for-cut preparation

Fiery Prep-it™ is a powerful, easy-to-use software solution for the preparation, layout, and automated production of print-for-cut jobs. It can both save you hours of prepress time and dramatically decrease your media usage. From true shape nesting and cut path editing, through to double-sided printing and automation, it can maximise the use of your existing printing and cutting equipment.



Fiery ColorGuard Cloud-based colour control

Fiery ColorGuard™ lets you streamline and schedule recalibration and colour verification tasks so colour control is never missed. It works alongside colour management tools to keep results on target as printer and environmental conditions change. It automatically notifies operators when colour tasks are due and provides alerts if results fall outside tolerance – allowing corrective action to be taken quickly, keeping your colour on point and production on track.



Fiery JobFlow Prepress workflow automation

Fiery JobFlow™ automates job preparation steps in prepress workflows to produce ready-to-print files. Perform essential job processing tasks such as PDF conversion, image enhancement, scaling, and job inspection and correction with Enfocus PitStop technology. By eliminating repetitive manual setup and reducing the risk of human error, Fiery JobFlow ensures files are efficiently processed and delivered ready to print with minimal touchpoints.



Fiery FreeForm Create Variable data creation

Fiery FreeForm™ Create is a free, stand-alone application that makes it easy to add personalisation to any print job – no design skills required. Add variable text, images, and barcodes to files in minutes to create impactful, customised pieces that connect with your customers. Seamlessly integrated with Fiery servers, it's the fast, free way to add value to every print.

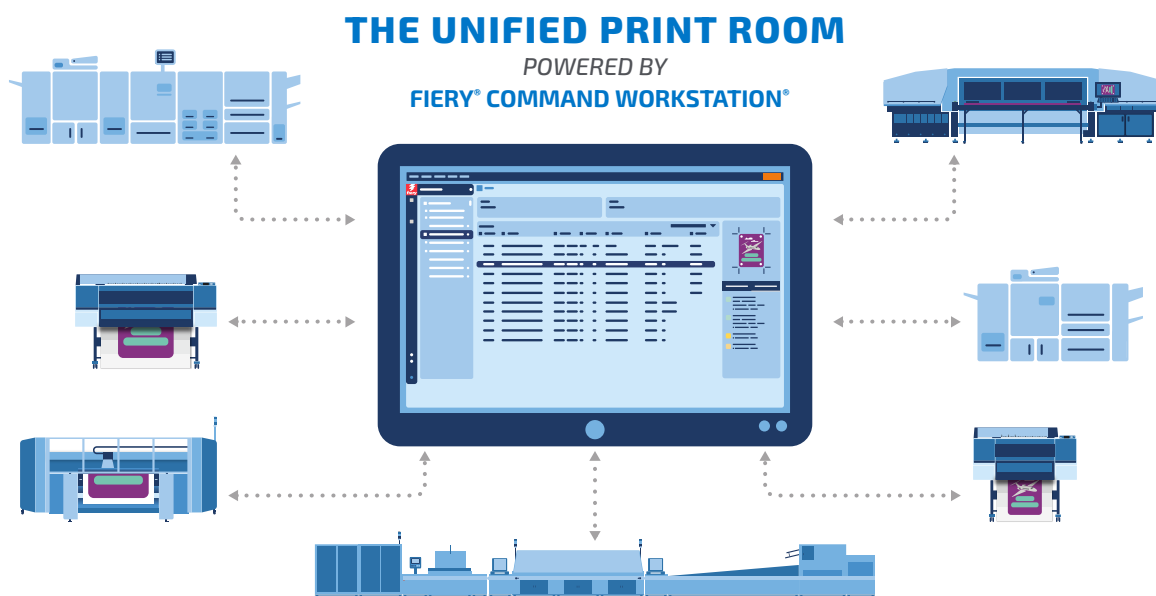




Unified Fiery-driven print room

Fiery Command WorkStation® — the world's most widely used digital print job management interface—is the client for Fiery XF, enabling centralised production across multiple printers and Fiery servers. The visual Fiery Job Editor allows real-time job adjustments, while Fiery Job Center provides intuitive, powerful job management for both Windows® and macOS® users.

Command WorkStation is the heart of the unified Fiery Driven™ print room, connecting seamlessly to cutsheet, large-format, and high-speed inkjet printers. A single, shared job management interface across all printer technologies reduces training time, simplifies software maintenance, and increases staff flexibility. Fiery Command WorkStation can be installed as many times as needed at no charge and receives regular feature updates to keep your operation performing at its best.



Software maintenance and support

Your Fiery XF configuration and all its product options are future-proofed with a 1-year Software Maintenance and Support Agreement (SMSA). This includes all major and minor version releases, all newly released printer drivers and fixes, plus remote support directly from Fiery, LLC at no charge for the first year. Subsequent years can be purchased from your Fiery provider or the [Fiery Shop](#) to ensure you continue to stay up to date and fully covered.



For more information, please visit www.fiery.com

Nothing herein should be construed as a warranty in addition to the express warranty statement provided with Fiery, LLC products and services.

ColorGuard, ColorRight, Command WorkStation, Fiery, the Fiery logo, Fiery Compose, Fiery Driven, the Fiery Driven logo, Fiery Edge, Fiery Essential, Fiery HyperRIP, Fiery Impose, Fiery Impress, Fiery ImageViewer, Fiery Intensify, Fiery JobExpert, Fiery JobFlow, Fiery JobMaster, Fiery Prep-it, Fiery Prints, the Fiery Prints logo, Fiery TrueBrand, FreeForm, Fiery IQ, PrintMe, RIPChips, RIP-While-Print, Spot-On, Spot Pro, WebTools, are trademarks or registered trademarks of Fiery, LLC and/or its wholly owned subsidiaries in the U.S. and/or certain other countries. All other terms and product names may be trademarks or registered trademarks of their respective owners and are hereby acknowledged.

© 2000-2026 FIERY, LLC. ALL RIGHTS RESERVED.

FTL_014.02.26_UK