

# Digital Factory 12

Smarter color. Streamlined workflows.



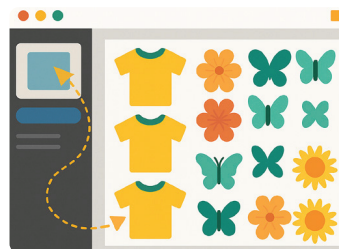
## Why upgrade to version 12

Digital Factory 12 adds new capabilities that help accelerate production, reduce costs, and deliver high-quality results. Upgrade to version 12 to take advantage of enhanced workflows and new tools built to scale with your business and support every stage of production, from small print shops to high-volume environments.

### FEATURE HIGHLIGHTS

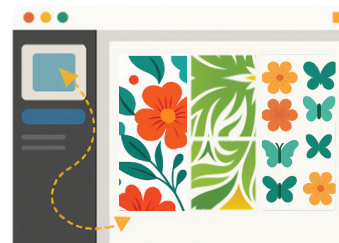
#### GANG SHEET BUILDER - ENHANCED IN 12.1

Create your gang sheets directly within Digital Factory—no extra tools, no extra costs. Designed for workflows of any size, it enables bulk import of designs, layout organization using nesting or free-form, and automatic cropping. Add labels and notes, and preview designs in real time. Once created, gang sheets can be sent directly to the queue or saved for recurring orders—all within a single, fully integrated workflow.



#### MULTI-LANE PRINTING - NEW IN 12.1

Optimize media usage and boost productivity with multi-lane printing. Divide wide-format media into independent lanes to allow multiple jobs to run in parallel. Define the number of lanes, their size, and the spacing between them to efficiently process multiple customer orders simultaneously.



#### FLUORESCENTS AS PROCESS COLORS - NEW IN 12.1

Achieve vibrant, eye-catching prints with natural blends and consistent color results using fluorescent inks fully integrated into the printer's color gamut—no manual spot color setup required.





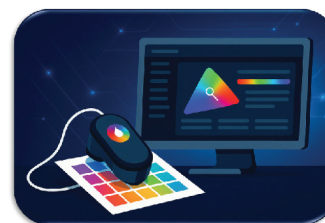
## SATURATION RENDERING INTENT

A new rendering intent designed for the DTF and textile market. Enhances vibrancy—especially in mid-tones—while preserving natural detail in skin tones. This RIP-level improvement is selectable within the standard color management controls.



## FIERY COLOR PROFILER (ADD-ON)

Professional ICC profiling comes to Digital Factory. Powered by the same technology behind Fiery Edge™, this new add-on module enables precise printer calibration using supported spectrophotometers. Digital Factory 12 sets a new standard for color management across the platform.



## ADDITIONAL UPDATES

- **New printers and cutters support\*:** Support for Epson SureColor G9000 (DTF), Epson V2000 and V4000 (UV), as well as cutters including Summa Class 3 DTF, Mimaki CFX Flatbed, and F-Mark 2 System.
- **Optimized image loading\*:** Faster image loading for a smoother, more responsive experience when printing.
- **Software update notifications\*:** Keep your software always up to date. New, clear visual indicators when updates are available.
- **Full language support\*:** Language support added for Polish, Dutch, and Czech.
- **License self-reset\*:** Starting with version 12.1, users can reset their licenses themselves—no need to contact technical support when moving to a new computer or printer.
- **Print length marks:** Indicates how much of the roll a job used—helpful for cost tracking and identifying failures mid-print.

- **Pull cut mode:** Improved registration for thin films and complex shapes—especially near unsupported roll ends.
- **Screen selector tool:** Set screening method per queue to better match material and application needs.
- **Mark system rotation:** Support for additional mark orientations to suit a wider range of cutter and printer requirements.

### SMARTER COLORS WITH FIERY COLOR PROFILER

- **Individual ink limit\*:** Define the maximum ink limit for each individual channel, helping prevent ink waste and reduce the risk of bleeding.
- **Spot color management:** Includes up-to-date color libraries with a new interface for spot color selection, including the latest PANTONE® definitions.

**SMARTER COLOR. STREAMLINED WORKFLOWS. BUILT FOR WHAT'S NEXT.**

\*New features in version 12.1

### Supported printers:

Visit the list of all supported printers.



### Compatible with:



### System requirements:

	Minimum	Recommended
CPU	Multicore Intel® or AMD (1.7GHz or faster)	Multicore Intel® or AMD (3.0 Ghz or faster)
HDD	500 GB	750 GB
RAM	8 GB	16 GB



For more information, please visit [www.fiery.com](http://www.fiery.com)

Nothing herein should be construed as a warranty in addition to the express warranty statement provided with Fiery, LLC products and services.

ColorGuard, ColorRight, Command WorkStation, ColorWise, Fiery, the Fiery logo, Fiery Compose, Fiery Driven, the Fiery Driven logo, Fiery Edge, Fiery Essential, Fiery HyperRIP, Fiery Impose, Fiery Impress, Fiery ImageViewer, Fiery Intensify, Fiery JobExpert, Fiery JobFlow, Fiery JobMaster, Fiery Prep-it, Fiery Prints, the Fiery Prints logo, Fiery TrueBrand, FreeForm, MicroPress, IQ, PrintMe, RIPChips, RIP-While-Print, Spot-On, Spot Pro, and WebTools are trademarks or registered trademarks of Fiery, LLC and/or its wholly owned subsidiaries in the U.S. and/or certain other countries. All other terms and product names may be trademarks or registered trademarks of their respective owners and are hereby acknowledged.

© 2026 FIERY, LLC. ALL RIGHTS RESERVED.