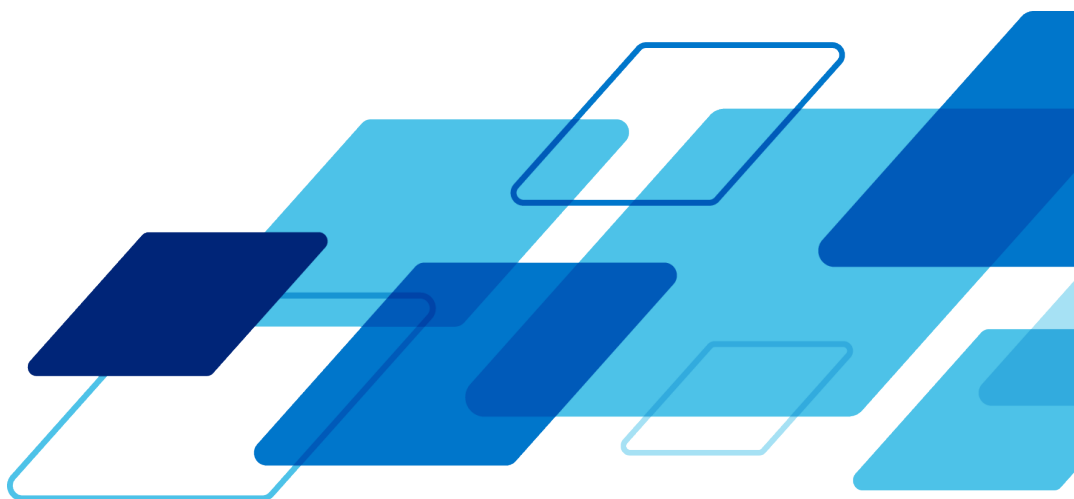




Fiery JobFlow

Installation Guide





Where to install Fiery JobFlow:

Options for Fiery® JobFlow™ software installation vary by the type of Fiery server you own.

- **For Fiery FS200 Pro** or newer external servers, install Fiery JobFlow software directly on the Fiery server.
 - You may also choose to install Fiery JobFlow on a **separate Windows computer** instead of directly on the Fiery server.
 - **Most Fiery FS200 Pro and newer servers** come with JobFlow Base (the free version) pre-installed. If this is the case, please proceed to step 4 below.
- **For older Fiery external servers (FS150 Pro, FS100 Pro, System 10, or System 9R2)**, install Fiery JobFlow on a separate Windows computer.
- **For Fiery XF 7 or newer servers**, install Fiery JobFlow on a separate Windows computer.
- **For all embedded Fiery servers**, install Fiery JobFlow software on a separate Windows computer.

You must have the optional [Fiery Productivity Package](#) (Fiery FS350 and prior) or the [Fiery Automation Package](#) (Fiery FS400 and above) installed and enabled for the Fiery server to connect to Fiery JobFlow.



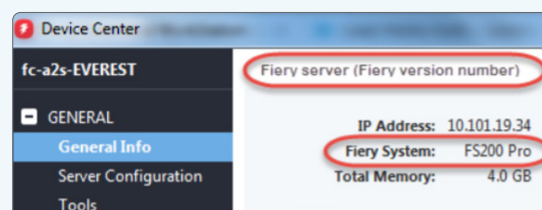
Note: When JobFlow is installed on a separate Windows computer or on a Fiery server, you must also install Fiery Command WorkStation® on the same computer/server. To make full use of the Impose module in Fiery JobFlow, Fiery Impose must be installed and licenced on the same Windows computer or Fiery server.

How to check which Fiery server you have in the Device Center:

Command WorkStation 5:



Command WorkStation 6 and 7:





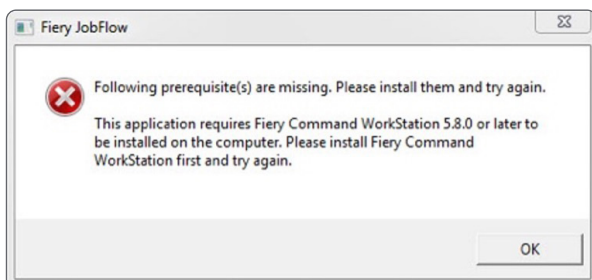
How to install Fiery JobFlow:

1. To be able to download and install Fiery JobFlow, you need **Fiery Software Manager**. If you don't already have it, you can [download it here](#).

Once Fiery Software Manager is installed, open it and click on the **Fiery JobFlow Download button**.

2. Once the download is completed, click on the **Install button**, and follow the instructions. Upon successful installation, Fiery JobFlow will create a shortcut on your desktop.

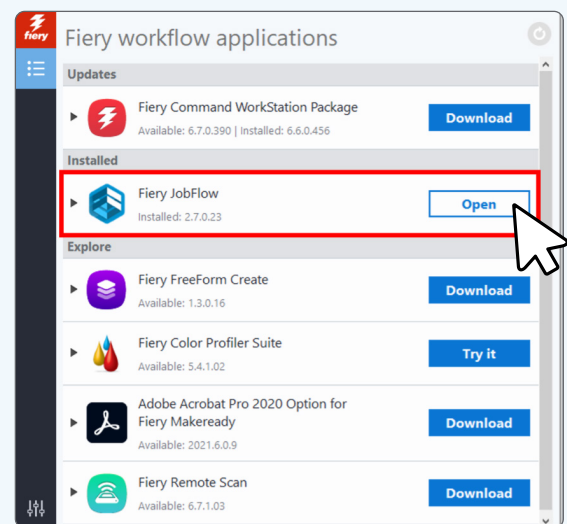
IMPORTANT: Fiery Command WorkStation must be installed prior to installing Fiery JobFlow. Otherwise, you will get this error message:



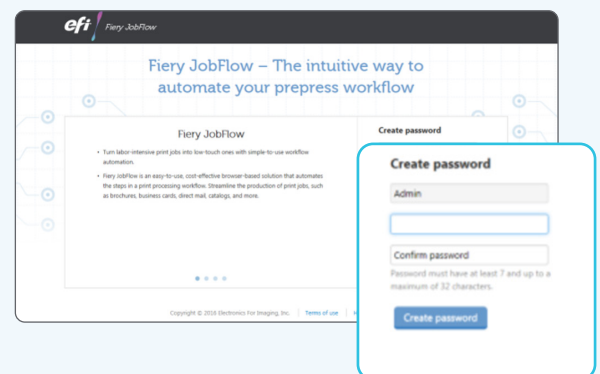
3. Double-click on the **Fiery JobFlow shortcut** on your desktop and create your login for Fiery JobFlow. The default username is Admin.

Create a password that meets the requirements and click on **Create password**.

You will have to install Fiery Software Manager before installing Fiery JobFlow:



Install and create your login for Fiery JobFlow:





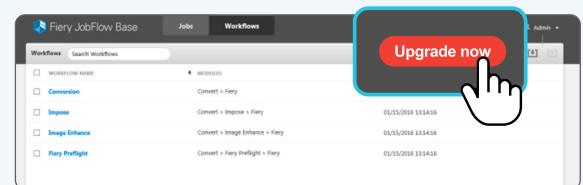
4. Enter the IP address or server name of your **Fiery Central Server** to connect it as the default output device.

Connect to Fiery Central Server:

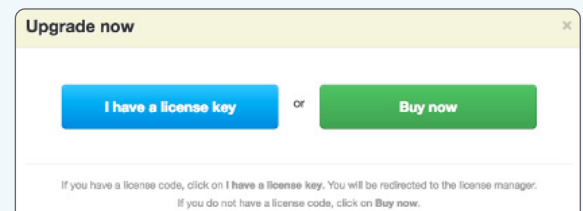


5. You are now logged in to the free version, Fiery JobFlow Base. If you have a licence code for the paid version or for a 30-day free trial, **click on the Upgrade now button.**

Enter licence code or start your 30 day trial



6. Click on the "I have a licence key" button. Follow the instructions to enter your licence activation code.





Start building your workflow library:

Start building your own workflows or download and import ready-to-use workflows from the Fiery JobFlow Library at resources.fiery.com/jobflow-library.



**Enfocus
PitStop Pro**

The Fiery JobFlow [30-day free trial](#) also includes a default library of **Enfocus PitStop Pro** resources.

Optional

If you would like to create your own Enfocus PitStop Pro resources, download the **Enfocus PitStop Pro installer** from the links below and follow the activation process:

Mac:

download.fiery.com/jobflow/enfocuspitstop/mac

Windows:

download.fiery.com/jobflow/enfocuspitstop/windows



Note: If you purchase the full version of Fiery JobFlow, you will also get a licence for Enfocus PitStop Pro.

Overview	Benefits	Library	Spec
Library			
Fiery JobFlow Base and Fiery JobFlow sample workflows			
You can build your own workflows or download and import any of the pre-configured sample workflows below to start using Fiery JobFlow Base or Fiery JobFlow for automation. The workflows include all resources required to work. To find out more about each workflow, open the workflow summary.			
Jump to JobFlow Connect packages.			
Workflow name	Supported by	Workflow description	Download
Collect Exact Match – 24-UP business cards	JobFlow Base, JobFlow	This workflow collects business cards to satisfy requirements for 24-UP, 250 sheet runs. Requires JobFlow Base 2.5.	Workflow
Collect and fix 3 business cards and impose (12x18)	JobFlow	Collects 3 duplex business cards, adds bleed if needed and imposes them in 3 rows of 8 cards. Stack size can be set by setting copies on Fiery. Requires JobFlow 2.3 or newer, CWS 6.1 or newer and Fiery Impose	Workflow
		Imposes jobs using Fiery Impose Trim Box Auto Gangup on a 12x18	



For more information, please visit www.fiery.com

Nothing herein should be construed as a warranty in addition to the express warranty statement provided with Fiery, LLC products and services.

ColorGuard, ColorRight, Command WorkStation, ColorWise, Fiery, the Fiery logo, Fiery Compose, Fiery Driven, the Fiery Driven logo, Fiery Edge, Fiery Essential, Fiery HyperRIP, Fiery Impose, Fiery Impress, Fiery ImageViewer, Fiery Intensify, Fiery JobExpert, Fiery JobFlow, Fiery JobMaster, Fiery Prep-it, Fiery Prints, the Fiery Prints logo, Fiery TrueBrand, FreeForm, MicroPress, IQ, PrintMe, RIPChips, RIP-While-Print, Spot-On, Spot Pro, and WebTools are trademarks or registered trademarks of Fiery, LLC and/or its wholly owned subsidiaries in the U.S. and/or certain other countries. All other terms and product names may be trademarks or registered trademarks of their respective owners and are hereby acknowledged.

© 2025 FIERY, LLC. ALL RIGHTS RESERVED.

FTL_051.05.25