

Fiery Extended Applications v4.3

Featuring Fiery Command WorkStation v5.7

What's New Guide



What's inside:

Overview of Fiery Command WorkStation	4
New Features in Fiery Extended Applications v4.3	5
Fiery Software Manager 3.0	6
Incremental updates	6
Fiery Command WorkStation 5.7	6
Filtered View Tabs	6
Define date range in Filtered Views	7
Fiery makeready tools	7
Imposition automation based on User Defined Finish Size for Fiery Hot Folders in Fiery Impose	7
Convert to Grayscale – Fiery Compose and Fiery JobMaster	7
Auto Tabs – Fiery JobMaster	8
Advanced Page Numbering – Fiery JobMaster	8
Fiery JobFlow 2.0	9
Fiery Dashboard enhancements	10
Fiery JDF v1.4	10
Fiery API availability	11
Extended language support	11

Introduction

Overview of Fiery Command WorkStation

Fiery® Command WorkStation®, the print job management interface for Fiery servers, makes printing more productive, powerful and intuitive. It centralises job management, connects to all Fiery servers on the network and improves productivity. The intuitive interface simplifies complex jobs, regardless of the level of experience of the operators. Full cross-platform Apple® Mac® and Microsoft™ Windows® support maintains the functionality, look and feel.

The intuitive interface offers a fully functional remote connection, so users get the same quality results as when they use a local connection to a Fiery server. The backward-compatible Fiery Command WorkStation also allows print providers to update and provide usability enhancements for current Fiery servers at no additional cost.

To download the latest version of Command WorkStation, visit www.efi.com/CWS5.

The Fiery Extended Applications Package 4.3 includes the latest versions of Fiery Command WorkStation and additional applications:

- **Fiery Software Manager 3.0 – new version!**
Automatically checks and downloads updates to all of the Fiery Extended Applications and other additional applications in the background.
- **Fiery Command WorkStation 5.7 – new version!**
Centralises job management and connects to all Fiery servers on the network for improved real-time productivity.
 - Makeready software included in the Fiery Command WorkStation download: Fiery Impose, Fiery Compose and Fiery JobMaster 4.7 – new version!
- **Fiery Hot Folders 3.7 – new version!**
Automates job submission processes for repetitive tasks, saving time and reducing print errors with a simple drag-and-drop operation.
- **Fiery Remote Scan 6.3**
Fiery Remote Scan is a TWAIN-compatible application that runs on Windows and Macintosh, allows clients to retrieve scans from a copier and save them to your computer, or import them directly into compatible applications.
- **Fiery Printer Delete Utility 3.3**
Easily removes Fiery applications, Fiery printers and associated print drivers/files on Mac clients.

The Fiery Extended Applications Package 4.3 enables the installation of the following Fiery applications after installing the Fiery Software Manager on Windows clients or Windows-based Fiery servers:

- **Fiery Integration Package 1.1 – new!**
Fiery Integration Package includes the latest version of Fiery JDF and the Fiery Integration Manager application that automatically updates the Fiery JDF version and Fiery API version on compatible Fiery servers. Administrators can configure the functionality of the Fiery JDF installed on the Fiery server. Users must select “Show additional features” in Fiery Software Manager Preferences to see the Fiery Integrated Package listed for download.
- **Fiery JobFlow 2.0 – new!**
Fiery JobFlow™ enables prepress workflow automation for streamlined job processing and printing. Start with Fiery JobFlow Base that comes free and manages workflows including PDF conversion, Fiery Preflight, image enhancement, document imposition, and flexible options for job submission, archiving and output. Upgrade to the paid Fiery JobFlow version to add more intelligence with rules-based workflows, advanced preflight and PDF editing, powered by Enfocus Pitstop, and cloud-based JobFlow approval process for maximum efficiency.

New Features in Fiery Extended Applications v4.3

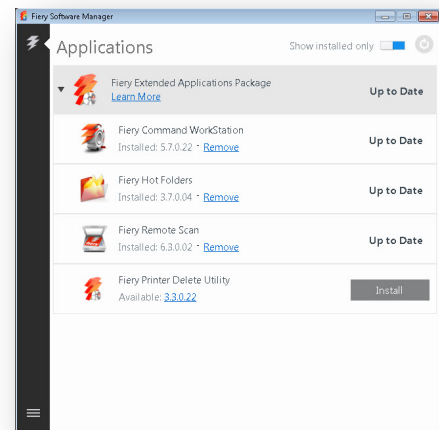
- Fiery Software Manager v3.0
 - Incremental updates
- Fiery Command WorkStation v5.7
 - Filtered View Tabs
 - Define date range in Filtered Views
 - Fiery makeready tools
 - Fiery Impose
 - Imposition automation based on User Defined Finish Size for Hot Folders
 - Fiery Compose and Fiery JobMaster
 - Convert to Grayscale
 - Fiery JobMaster
 - Auto Tabs
 - Advanced Page Numbering
- Fiery JobFlow 2.0
- Fiery Dashboard enhancements
- Fiery JDF v1.4
- Fiery API availability
- Extended language support
 - Korean
 - Traditional Chinese

Fiery Software Manager 3.0

Version 3.0 presents a new user interface for easy, independent administration of applications.

Incremental updates

Fiery Software Manager will install individual Fiery applications in future software updates. Incremental updates of the Fiery applications enable faster and more frequent delivery of new software features, resulting in faster installation of updates and the ability to select which applications to install.



Fiery Software Manager allows independent administration of applications.

Fiery Command WorkStation 5.7

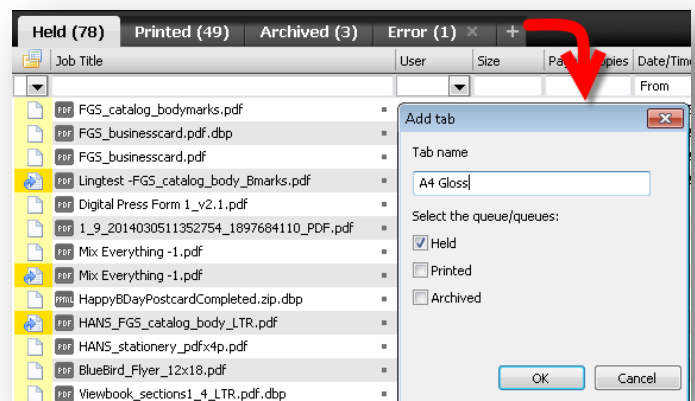
Filtered View Tabs

Filtered View Tabs, a new productivity-boosting feature, increases production throughput.

Operators save Filtered View Tabs as additional tabs from the standard Held, Printed and Archived tabs. This helps operators plan and prioritise print production by grouping jobs with similar characteristics and viewing Held and Printed jobs in a single tab.

With Filtered View Tabs, operators store their favorite search criteria in a separate tab that is dynamically refreshed as new jobs come into the Fiery server.

Users can create up to 10 tabs in addition to the standard tabs of Held, Printed and Archived.



Filtered View Tabs are added to plan and prioritise print production.

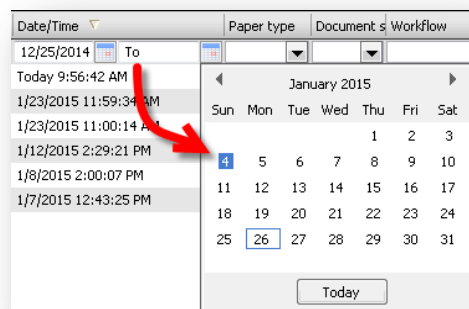
Useful scenarios:

- Create an "Error" tab to list all the jobs with an error Job Status instead of displaying them mixed in with the printed jobs in the Printed tab.
- Create a tab called "Hammermill 105gsm Coated" to filter just jobs that are ready to print, matching the media the operator has just loaded.
- An operator has a tab called 'Mike' that shows only the jobs under his username in both Held and Printed tabs.

Define date range in Filtered Views

Filtered Views allows users to select a date range in the Date/Time field so they can find print jobs faster and define new Filtered View Tabs.

Select a date range to find jobs quicker

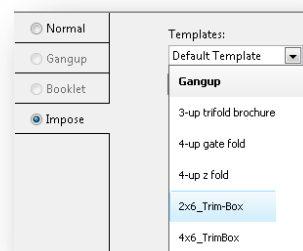


Fiery makeready tools

Imposition automation based on User Defined Finish Size for Fiery Hot Folders in Fiery Impose

The User Defined Finished Size imposition in Fiery Impose honors the trim box finish option in PDF files. With this enhancement, Fiery users can use Fiery Impose templates created with User Defined Finished Size settings in Fiery Hot Folders.

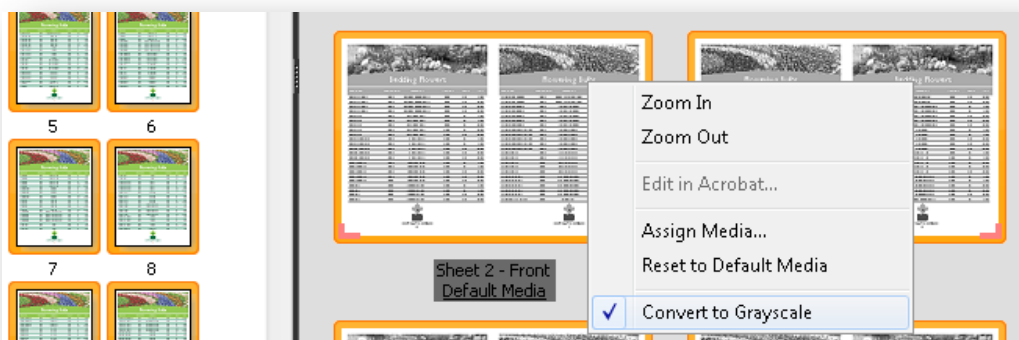
Select imposition based on trim box from Fiery Hot Folders



Convert to Grayscale – Fiery Compose and Fiery JobMaster

Operators can easily specify any page or sheet surface to print in black and white during the makeready stage.

The Convert to Grayscale feature saves on click charges and easily fulfills the designer's intent for a printed piece. Applying grayscale conversion at the sheet level ensures click savings for imposed documents such as booklets or gangups.



Convert to Grayscale takes place either in the Page View or Sheet View panels. Once the selected pages or sheet surfaces are converted, changes are reflected in the Sheet View panel.

The conversion is non-destructive. This means that once the job has been saved back to the Held queue, operators can apply further edits to reverse the conversion if necessary.

Useful scenarios:

- A long manual that is heavy on text has blue hyperlinks throughout the document. The operator can turn all body sheets into grayscale in Sheet View after laying out the booklet to save on clicks.
- A customer wants the back of her business card printed in black and white. The operator selects the back page in Page View panel and converts it to grayscale.

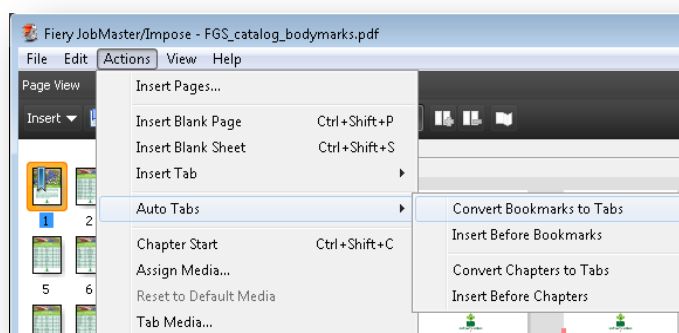
Auto Tabs – Fiery JobMaster

The Auto Tabs feature creates tab sheets, places them in the right location and populates the tab ear content automatically by using bookmark links from PDF documents.

It streamlines makeready and reduces errors that can happen during manual assembly of tab jobs.

With Auto Tabs, users can also reduce the time to prepare a tab job from 20 to 50 minutes, to less than 5 minutes.

Auto Tabs is especially valuable for long documents that require well-defined chapters or sections, such as training manuals, reports or course packs.



Auto Tabs uses bookmark links in the PDF or places tabs automatically at the Chapter Start page

Useful scenarios

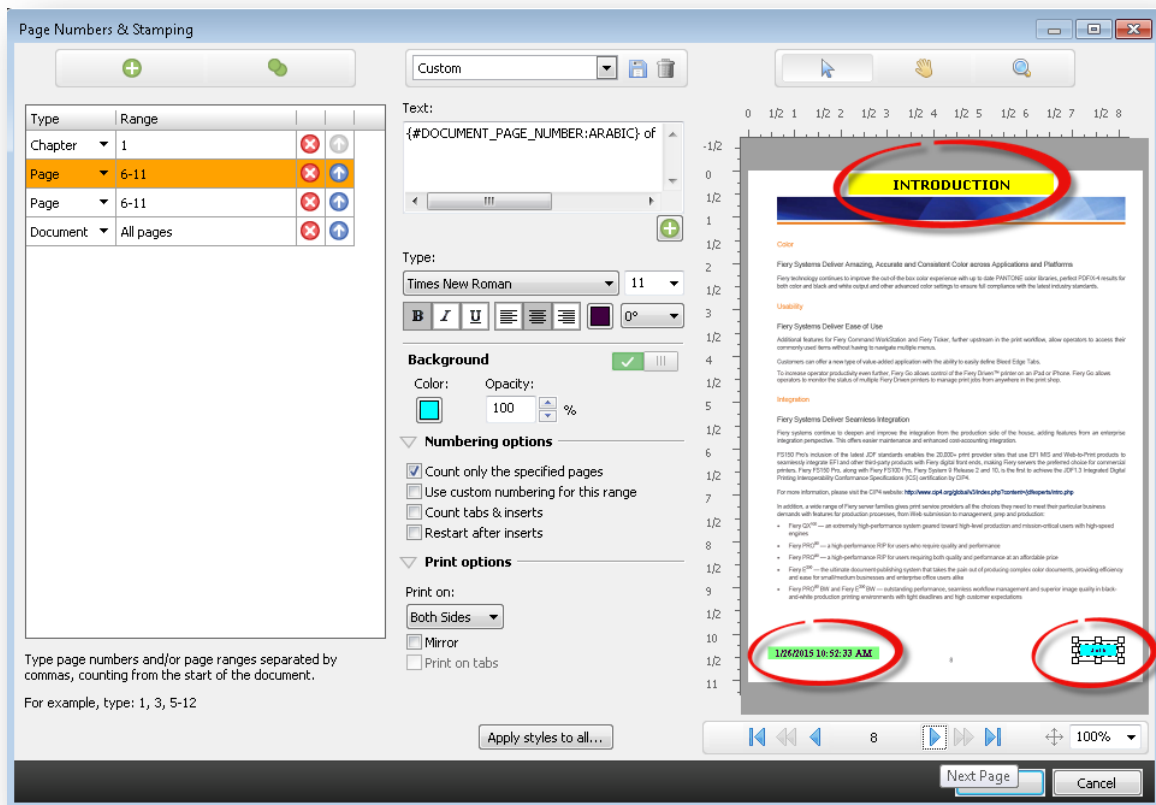
- The print buyer provides a PDF file for each section of a training manual. The operator combines those files into one document using Adobe Acrobat, which merges each section into a single PDF file and automatically creates bookmarks at the beginning of each section. Bookmarks retain the names of their PDF files.
- The print buyer includes all tab information in the PDF print file, rather than creating tab instructions and tab ear content in a separate document.

Advanced Page Numbering – Fiery JobMaster

Makeready of long, complex jobs requires the ability to apply different page number sequences or formats to the multiple sections within a document. The expanded page numbering tool in JobMaster includes advanced capabilities to cater to these demands.

Advanced Page Numbering allows operators to create unique numbering sequences for one or multiple sections, using a combination of custom text, formats and macros.

Advanced Page Numbering offers ease of use and flexibility to meet various document numbering requirements in long documents.



More than one page-numbering sequence can be applied to a single page.

Useful scenarios

- A technical manual contains an appendix and a main section, each requiring a different format. An appendix might call for Roman numerals (i, ii, iii), while the main section uses Arabic numerals (1, 2, 3). With Advanced Page Numbering all page numbering formats can be defined at once.
- A job requires restarting page numbering because of inserts and dividers that should not be numbered. Advanced Page Numbering can detect chapter starts automatically to skip and restart numbering.
- Another job needs all pages to display the chapter name on top and the page number on the bottom. Advanced Page Numbering can add both macros to the same page without returning to the native files to add chapter names.

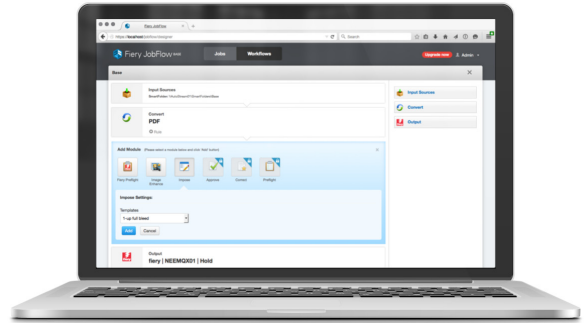
Fiery JobFlow 2.0

Fiery JobFlow offers automated prepress processes that are easy to set up and use, to minimise rework and boost overall efficiency at the print floor.

The Fiery JobFlow installer is included in the list of applications to download from the Fiery Software Manager on Windows workstations. Users can access the browser-based Fiery JobFlow application from Mac or Windows clients.

After installing the Fiery JobFlow application, the free version, Fiery JobFlow Base, is enabled. Users need a paid upgrade license to unlock the full functionality of Fiery JobFlow. Fiery JobFlow Base is used to configure automated workflows that consist of:

- Job submission from multiple locations (Dropbox, shared folders and FTP)
- PDF conversion
- Fiery Preflight (requires Fiery Graphic Arts Package, Premium Edition)
- Image enhancement
- Document imposition (requires Fiery Impose)
- Job ticketing
- Archiving and output to multiple locations (Dropbox, shared folders, FTP and Fiery external servers)



Fiery JobFlow is accessed through a web browser on Mac or Windows clients.

The full version of Fiery JobFlow 2.0 contains additional features:

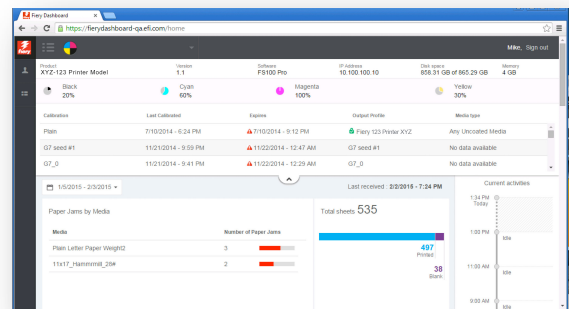
- Rules-based workflows
- Advanced preflight (powered by Enfocus Pitstop)
- PDF correction (powered by Enfocus Pitstop)
- Cloud-based approval workflows

For more information on 2.0 visit the Fiery JobFlow webpage at efi.com/fieryjobflow.

Fiery Dashboard enhancements

Fiery Dashboard is a cloud-based service that tracks and reports production data to provide an instant overview of operational efficiency and engine utilization. This release includes the following new features:

- Paper jam tracking: monitor paper jams by media as identified through Paper Catalog settings.
- Toner status: view current toner levels with low-toner and no-toner icons.
- Calibration monitor: track last calibrated time, calibration expiration dates, assigned output profiles and media types.



Visit the Fiery Dashboard webpage at www.efi.com/fierydashboard to learn more and register.

Fiery JDF v1.4

Fiery JDF enables built-in JDF-based integration support to automate processes from job submission to output by integrating print workflow and business management systems. So job information flows through the systems with fewer touch points and errors

Fiery JDF, available in the [Fiery Productivity Package](#) option for Fiery embedded servers, allows users to integrate print workflow and business management systems. Visit the [Fiery JDF supported printers webpage](#) to see the list of Fiery embedded servers that offer Fiery JDF support.

Version 1.4 now allows users to:

- Automatically eject unused tabs to a default or specified tray
- Produce saddle-stitched booklets that require different media for the cover page and the body pages

Fiery API availability

Fiery API is a service that enables the support for Fiery Go and custom application development through services from developer.efi.com. All Fiery external servers running Fiery System 9R2 or later software and Fiery embedded servers running Fiery FS150 software have Fiery API if Fiery Command WorkStation v5.5 or later is installed.

The new version of the Fiery Integration Manager included in the Fiery Integration Package 1.1 enables the installation of Fiery API to Fiery embedded and external servers running Fiery System 9R2 / 9eR2 or later.

Detailed instructions for adding the Fiery API to existing Fiery servers are available at help.efi.com/fip.

Extended language support

Fiery Command WorkStation 5.7 comes localised into two new languages: Korean and Traditional Chinese.

If the Command WorkStation client is running in one of these languages, and connects to one of the servers that does not support the same language, the client prompts the user to install the server language pack to the Fiery server automatically.

This new feature has been made available to a selected list of Fiery servers. Visit the Fiery Language Package release notes Web page at help.efi.com/flp to get the list of supported Fiery servers and access to the installation procedures.



EFI fuels success.

From Fiery to super wide inkjet, from the lowest cost per label to the most automated business processes, EFI has everything your company needs to succeed. Visit www.efi.com for more information.



The APPS logo, AutoCal, Auto-Count, Balance, Best, the Best logo, BESTColor, BioVu, BioWare, ColorPASS, Colorproof, ColorWise, Command WorkStation, CopyNet, Cretachrom, Cretaprint, the Cretaprint logo, Cretaprinter, Cretaroller, DockNet, Digital StoreFront, DocBuilder, DocBuilder Pro, DocStream, DSFdesign Studio, Dynamic Wedge, EDOX, EFI, the EFI logo, Electronics For Imaging, Entrac, EPCount, EPPPhoto, EPRegister, EPStatus, Estimate, ExpressPay, Fabrividu, Fast-4, Fiery, the Fiery logo, Fiery Driven, the Fiery Driven logo, Fiery JobFlow, Fiery JobMaster, Fiery Link, Fiery Prints, the Fiery Prints logo, Fiery Spark, FreeForm, Hagen, Inkintensity, Inkware, Jetrion, the Jetrion logo, LapNet, Logic, MiniNet, Monarch, MicroPress, OneFlow, Pace, PhotoXposure, Printcafe, PressVu, PrinterSite, PrintFlow, PrintMe, the PrintMe logo, PrintSmith, PrintSmith Site, Printstream, Print to Win, Prograph, PSI, PSI Flexo, Radius, Rastek, the Rastek logo, Remoteproof, RIPChips, RIP-While-Print, Screenproof, SendMe, Sincolor, Splash, Spot-On, TrackNet, UltraPress, UltraTex, UltraVu, UV Series 50, VisualCal, VUTEk, the VUTEk logo, and WebTools are trademarks of Electronics For Imaging, Inc. and/or its wholly owned subsidiaries in the U.S. and/or certain other countries.