

Fiery[®] Command WorkStation[®] 6

What's New Guide



What's inside:

Overview of Fiery Command WorkStation.....	3
Fiery Command WorkStation Package 6	3
Value Proposition.....	5
New Features.....	6
New Features in Fiery Command WorkStation 6	8
Easy transition	8
More intuitive and easy to use	9
More efficient and productive	11
New tools for production managers	14
New features in Fiery makeready products	17
Usability enhancements	17
Fiery Impose new features	21
Fiery JobMaster new features	24
Integration enhancements	26
Fiery API v4.....	26
Fiery JDF v1.5	26
Additional resources	27

EFI fuels success.

We develop breakthrough technologies for the manufacturing of signage, packaging, textiles, ceramic tiles, and personalised documents, with a wide range of printers, inks, digital front ends, and a comprehensive business and production workflow suite that transforms and streamlines the entire production process, increasing your competitiveness and boosting productivity. Visit www.efi.com for more information.



Nothing herein should be construed as a warranty in addition to the express warranty statement provided with EFI products and services.

The APPS logo, AutoCal, Auto-Count, Balance, BESTColor, BioVu, BioWare, ColorPASS, Colorproof, ColorWise, Command WorkStation, CopyNet, Cretachrom, Cretaprint, the Cretaprint logo, Cretaprinter, Cretaroller, Digital StoreFront, DirectSmile, DocBuilder, DocBuilder Pro, DockNet, DocStream, DSFdesign Studio, Dynamic Wedge, EDOX, EFI, the EFI logo, Electronics For Imaging, Entrac, EPCount, EPPhoto, EPRegister, EPStatus, Estimate, ExpressPay, FabriVU, Fast-4, Fiery, the Fiery logo, Fiery Driven, the Fiery Driven logo, Fiery JobFlow, Fiery JobMaster, Fiery Link, Fiery Navigator, Fiery Prints, the Fiery Prints logo, Fiery Spark, FreeForm, Hagen, Inkintensity, Inkware, Jetrion, the Jetrion logo, LapNet, Logic, Metrix, MicroPress, MiniNet, Monarch, OneFlow, Pace, Pecas, Pecas Vision, PhotoXposure, PressVu, Printcafe, PrinterSite, PrintFlow, PrintMe, the PrintMe logo, PrintSmith, PrintSmith Site, PrintStream, Print to Win, Prograph, PSI, PSI Flexo, Radius, Remoteproof, RIPChips, RIP-While-Print, Screenproof, SendMe, Sinclorol, Splash, Spot-On, TrackNet, UltraPress, UltraVu, UV Series 50, VisualCal, VUTEK, the VUTEK logo, and WebTools are trademarks of Electronics For Imaging, Inc. and/or its wholly owned subsidiaries in the U.S. and/or certain other countries.

All other terms and product names may be trademarks or registered trademarks of their respective owners, and are hereby acknowledged.

© 2017 ELECTRONICS FOR IMAGING, INC. ALL RIGHTS RESERVED. | WWW.EFI.COM

Overview of Fiery Command WorkStation

Fiery Command WorkStation, the print job management interface for Fiery cutsheet servers, makes printing more productive, powerful and intuitive. It centralises job management, connects to all Fiery cutsheet servers on the network, and improves productivity. The intuitive interface simplifies job management, regardless of the user's level of experience.

Full cross-platform Apple® Mac® and Microsoft™ Windows® support provides consistent functionality, look, and feel. The intuitive interface offers a fully functional remote connection, so users get the same quality results as they do with a local connection to a Fiery server. The Fiery Command WorkStation also allows print providers to update and provide usability enhancements for current Fiery servers (Fiery System 10/10e and above) at no additional cost.



This What's New Guide offers information about the exciting new features and functionality in Fiery Command WorkStation 6.

Download version 6 of Command WorkStation at www.efi.com/CWS.

Fiery Command WorkStation Package 6

Fiery Command WorkStation 6 is part of the Fiery Command WorkStation Package. The download and installation process for this package is handled by the Fiery Software Manager.

Use the latest version of the Fiery Software Manager to uninstall the Fiery Extended Applications Package and replace it with Fiery Command WorkStation Package. The new package includes the following software for download:

Fiery Command WorkStation 6

Centralises job management and connects to all Fiery cutsheet servers on the network for improved real-time productivity. Fiery Command WorkStation 6 includes the following licensed makeready software: Fiery Impose, Fiery Compose, and Fiery JobMaster.

Version 6 of Command WorkStation offers a new user interface to provide a more engaging and intuitive printing experience that allows users to manage print jobs faster and boost print production.

Fiery Hot Folders

Automates job submission processes for repetitive tasks, saving time and reducing print errors with a simple drag-and-drop operation.

Fiery Software Uninstaller

Easily removes Fiery applications, Fiery printers and associated print drivers/files on Mac clients.

Fiery Software Manager

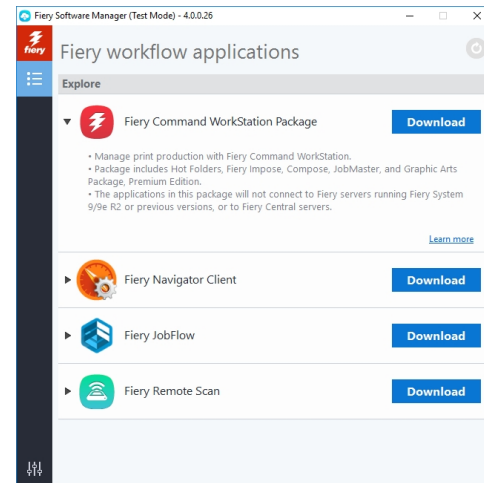
In addition to the Command WorkStation Package, the Fiery Software Manager also enables the installation of the following Fiery applications:

Fiery Remote Scan

This TWAIN-compatible application allows users to retrieve scans from a copier and save them, or import them directly into a compatible application. This application is now a standalone application, offering users the choice to download and install the application on their clients.

Fiery JobFlow – Windows only

Fiery JobFlow™ enables prepress workflow automation for streamlined job processing and printing. Start with the free Fiery JobFlow Base to manage workflows including PDF conversion, Fiery Preflight, image enhancement, document imposition; plus flexible options for job submission, archiving, and output. Upgrade to the paid Fiery JobFlow version to add more intelligence with rules-based workflows; advanced preflight and PDF editing, powered by Enfocus Pitstop; and cloud-based JobFlow approval process for maximum efficiency.



Fiery Software Manager

To use Command WorkStation 6 and JobFlow you need to update JobFlow to version 2.2.3 or later.

Fiery Navigator

Fiery Navigator is a service for proactive print operation control and device management that captures key production metrics and enables the propagation of configurations across the same Fiery Driven™ devices.

Fiery Integration Package – Windows only

Fiery Integration Package includes Fiery JDF 1.5.1 and Fiery API 4.0. Users must select "Show additional features" in Fiery Software Manager Preferences to see the Fiery Integrated Package listed for download.

Value Proposition

Fiery Command WorkStation 6 will help users manage print jobs faster and boost print production with:

1. Easy transition from version 5

A smooth and quick upgrade process means existing customers can start seeing new benefits right away because the upgrade process will keep their client settings.

A welcome tour of less than 5 minutes is all that's necessary to get started.

2. More intuitive and easy to use

The new user interface looks clean and similar to many popular interfaces. It also offers a more engaging interaction to make it more intuitive for current and new users.

3. Includes more efficient and productive ways to manage and prepare jobs

Users can find jobs faster by creating custom job views and using the flexible search and filter functions — so they can take quick action. It also offers faster access to tools by eliminating the need to open additional windows to perform common tasks.

The new features in makeready solutions offer faster ways to print complex jobs.

4. New tools for production managers

Managers can be more efficient and proactive at managing a print site with better visibility through key print production statistics. The new version also makes it easier to keep Fiery servers up to date with the latest patches and updates.

5. Ready for the future

Fiery Command WorkStation 6 provides the platform to efficiently manage production printing today and into the future. As businesses expand to new print engines or new inkjet opportunities, future versions of Command WorkStation 6 will provide a unified interface for all Fiery Driven devices that remains easy and intuitive, plus offers tools to efficiently manage print jobs and engines.



This guide groups new features and most important changes by the following categories.

New Features

Easy transition from version 5

- Smooth and quick upgrade process
- Welcome tour

More intuitive and easy to use

- Modern and clean user interface

More efficient and productive

- Job search functions
 - Simple search
 - Advanced search
 - Custom views
 - Custom filters
- Colour settings in Job Properties
- Set Defaults
 - Colour management defaults
- Inline editing

New tools for production managers

- Home view
 - Server status
 - Quick production metrics
- Fiery Updates
- Set Defaults

Specifications for Fiery Command WorkStation Package

These applications can connect and be installed on:

- Fiery servers running Fiery software: Fiery System 10 or 10e, FS100/100 Pro, FS150/150 Pro, and FS200/FS200 Pro servers.
- Mac® OS clients:
 - Processor: Multicore Intel® processor
 - Mac OS X® 10.9 and newer
 - 4 GB of RAM or more recommended
 - 7 GB of available hard drive space
 - 1280 x 1024 display
- Windows® clients:
 - Processor: Pentium 4, 1 GHz or faster processor
 - Microsoft® Windows 7 and newer
 - Microsoft Windows Server 2012 and newer
 - 1 GB or more of RAM
 - 16 GB of available hard drive space
 - 1280 x 1024 display

The above specifications are the same for Fiery Remote Scan.

Please note that Fiery Command WorkStation, Fiery Hot Folders, and Fiery Remote Scan do not connect to Fiery servers running Fiery System 9 R2 and earlier, or Fiery Central servers. To connect to those systems, users should install Fiery Command WorkStation 5.8. Find out how to downgrade from version 6 to version 5.8 at www.efi.com/cws.

New Features in Fiery Command WorkStation 6

Easy transition

Smooth and quick upgrade process

The upgrade process from Fiery Command WorkStation 5 to 6 offers a smooth and quick transition that guarantees users they can start operating with version 6 in just a few minutes, after an easy installation process.

If users have Command WorkStation 5.6, 5.7, or 5.8, they will be notified about version 6 in Fiery Software Manager. Upon choosing to install version 6, the earlier version will be automatically uninstalled.

If users are using Command WorkStation 5.0 through 5.5, they can download the Fiery Software Manager from the web at www.efi.com/cws. When they run it, users will see the option to install version 6, which will automatically uninstall the existing package and install version 6.

The Fiery Software Manager needs to be updated to the latest version to offer a guided process of the upgrade that:

- Uninstalls previous versions of Command WorkStation 5.
- Replaces Fiery Extended Applications with Fiery Command WorkStation Package. This new package includes Command WorkStation and Fiery Hot Folders. Fiery Remote Scan is now a standalone application, and users will be offered a choice to download and install the application on client computers

Retention of settings

The upgrade from any version of Command WorkStation 5 to version 6 will retain the following settings so users can quickly resume operations.

For Fiery Command WorkStation:

- Preference settings such as units, language, etc.
- The list of connected servers, so when version 6 launches, it will automatically log in to those servers and display them in the server list
- Local presets from Job Properties
- Fiery Impose templates
- Archive locations
- Job list columns

For Fiery Hot Folders:

- Hot Folders with different Job Properties settings, filter settings, Fiery Impose options

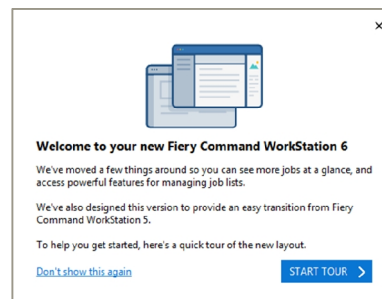
For Fiery Remote Scan:

- Folder mapping
- Previously connected servers

Welcome tour

Command WorkStation 6 offers a welcome tour that walks users through the main changes in the new interface, so they get acquainted quickly and can navigate through the new Command WorkStation with confidence.

The tour starts automatically in Job Center the first time Command WorkStation opens, and is always available from the Help menu for quick review.



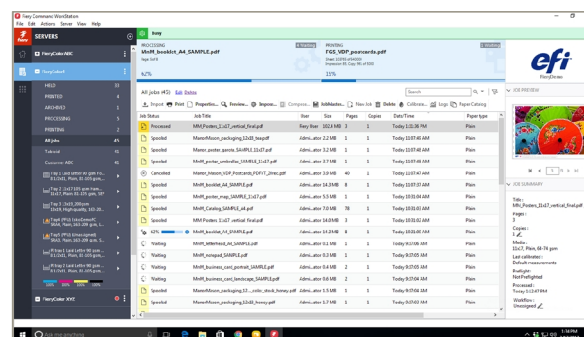
Welcome tour

More intuitive and easy to use

Modern and clean user interface

Command WorkStation 6 offers a new user interface that looks cleaner and is consistent with many modern applications. It offers a navigation flow that goes from left to right, starting from the list of connected servers, to the job list, to job-specific information on the far right. This provides a more engaging interaction, and makes it intuitive for current and new users.

All plug-in applications in Command WorkStation, Fiery Hot Folders, and Fiery Remote Scan have been updated to be consistent with the new design and navigation flow.



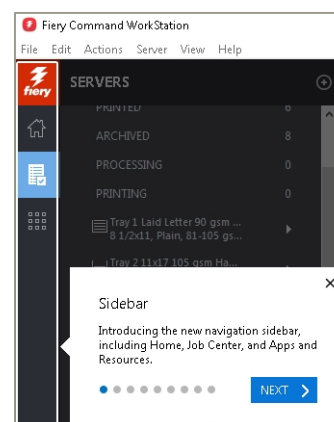
Job Center view

Sidebar

Command WorkStation introduces a new navigation sidebar, and offers users access to new screens including Home, Job Center, plus Apps and Resources. The new screens help increase product knowledge, simplify access to additional tools and resources, and increase visibility into key productivity metrics.

Home view

Command WorkStation 6 offers new ways to gain quick insight and better visibility into current print operations. Visit the [New tools for production managers section](#) below to learn more about Home view.



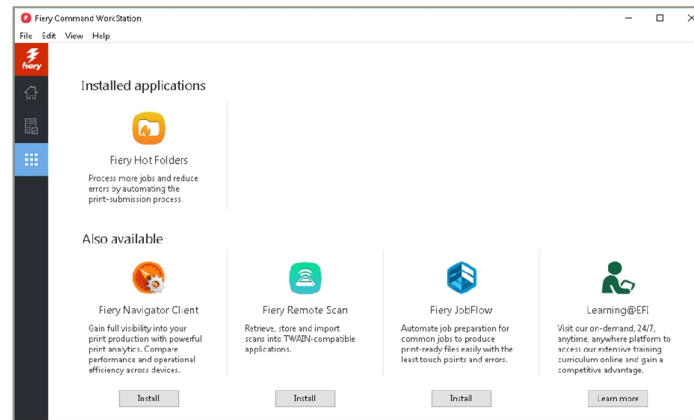
Sidebar

Apps and Resources view

The Apps and Resources view facilitates access and knowledge about new Fiery tools. It lets users easily see Fiery tools already available that can make a difference in their day-to-day operations.

Apps and Resources provides one-click access to currently installed Fiery applications such as Fiery Hot Folders, Fiery Remote Scan, and Fiery Color Profiler Suite. It also adds awareness of available applications, and

access to educational resources located at Learning@EFI, the on-demand, 24/7, anytime, anywhere platform to access EFI's extensive training curriculum online.

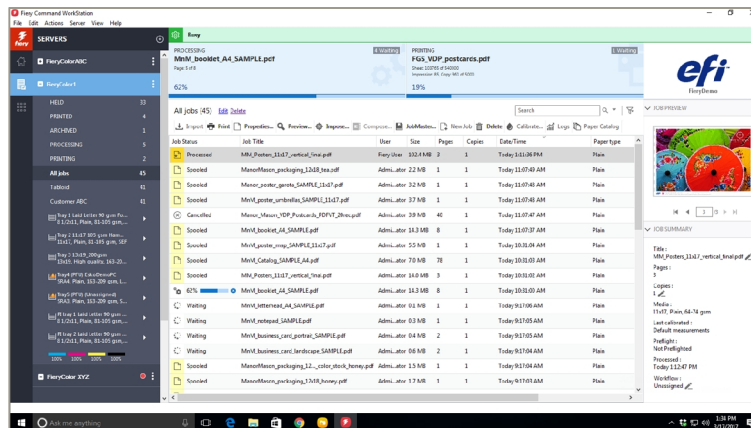


Apps and Resources view

Job Center view

The Job Center is the main work area of Command WorkStation and a centralised place to access jobs before going to print. It allows users to view all connected Fiery servers and manage all jobs.

In the new Job Center, the queues (for example, hold, printed, or archived) are now listed under the server name. This opens up more space for the main job list, so that more jobs can be displayed at one time, and users can find jobs more quickly.



Job Center view

More efficient and productive

Job search functions

Command WorkStation offers more ways to search jobs. This helps users find jobs faster to take quicker action. They can also customise job views to specific needs such as prioritisation and print production planning. The four search functions are:

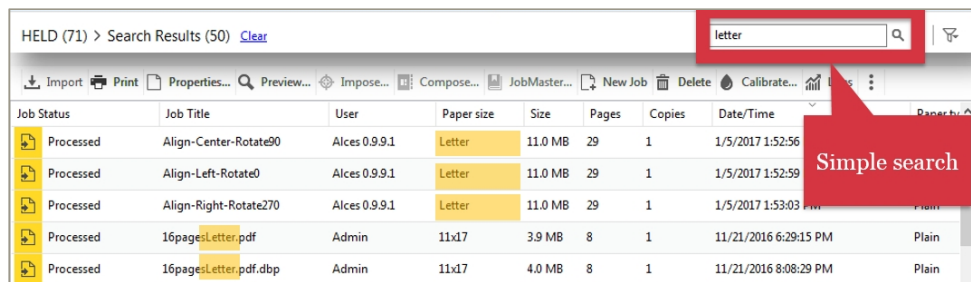
1. Simple search
2. Advanced search
3. Custom filters
4. Custom views



Watch video
fiery.efi.com/CWS6-express-videos/job-search

Simple search

Simple search lets users find jobs containing the search text in any of the columns they've selected for the current view. For example, if the user types "Letter," the search finds jobs that have the word "Letter" in the job title, and also jobs that have "Letter" in the paper-size column.

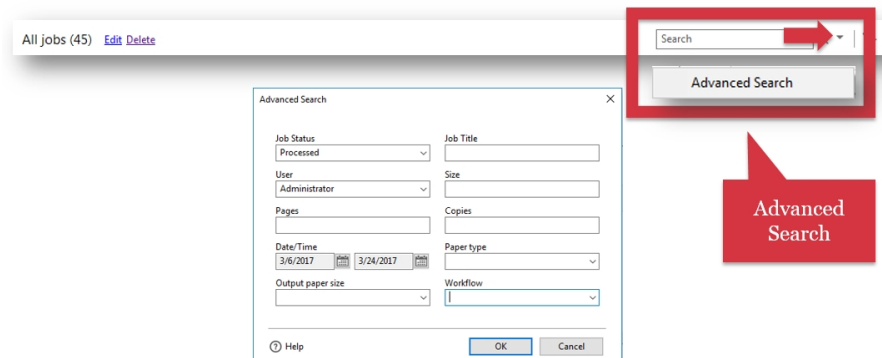


Simple search

Advanced search

Users access Advanced Search by clicking on the arrow next to the simple search section. They can search using multiple criteria (columns) simultaneously. The columns listed in the Advanced Search window are the same as the columns listed on the current job list.

If users want to retain that search criteria for their daily operations, they have the option to save the results of an advanced search as filters, and as a view.

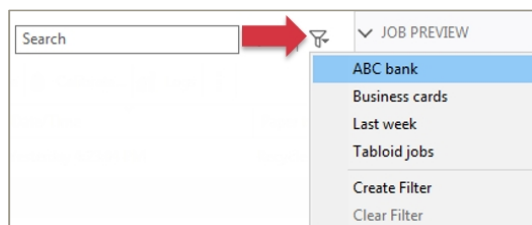


Advanced search

Custom filters

Users can create custom filters when they need to find jobs in the currently selected queue (Held, Print, or others), that comply with an advanced search criteria. All existing filters are available by clicking the filter icon near the search bar.

As an example, a user can apply a filter for a list of incoming jobs (Held queue) with a specific paper size, so they can prioritise production.

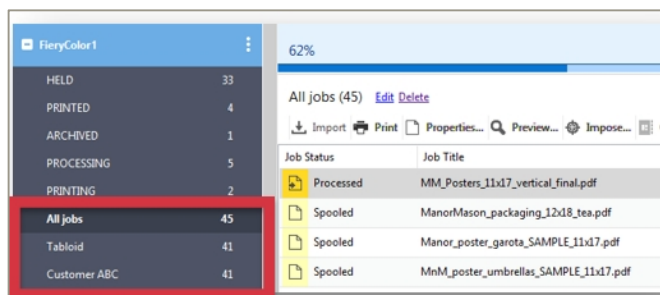


List of filters

Custom views

In addition to filters, users can create views to find jobs that comply with specific advanced search criteria and consider jobs in all queues. All custom views are listed under the default queues on the server list. Users can create up to 10 custom views.

Views are a great way to create a job list of all jobs in all queues, so users can see dynamic changes in job status in the same job list. They do this by simply opening Advanced Search and clicking OK without entering any search parameter, and then saving the search as a view.



List of custom views

Set Defaults

Command WorkStation offers administrators an easy way to change the default Job Properties settings for a specific server.

Administrators can access Set Defaults from the Server menu.



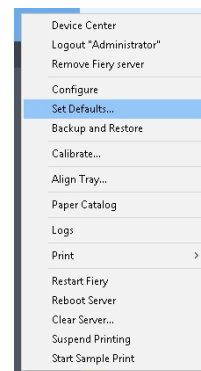
Watch video

fiery.efi.com/CWS6-express-videos/server-defaults

Set Defaults uses the same interface as Job Properties, and settings are applied to jobs waiting to print on the Print and Held queues. These settings then act as the defaults for future job presets or Virtual Printers.

Administrators can lock settings to ensure that users don't modify those settings when using Virtual Printers and jobs follow standard procedures.

With the Set Default feature, administrators have easy control of default settings and can guarantee that all jobs use consistent settings to comply with standard print requirements.

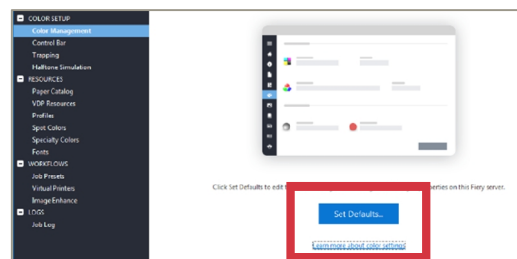


Access to Set Defaults

Colour management defaults

Set Defaults is the new place to edit colour management defaults. This way all job settings use the same familiar Job Properties user interface.

To facilitate the transition to this new change, Command WorkStation 6 keeps the Color Management tab under the COLOR SETUP in Device Center, which now offers an access point to the Set Defaults feature from that tab. There, users can also find easy access to Help documentation about colour settings and other learning resources.



Color Management tab in Device Center

Colour settings in Job Properties

The COLOR tab in Fiery Command WorkStation 6 now presents all the colour settings in one location for faster setup without having to open additional windows.



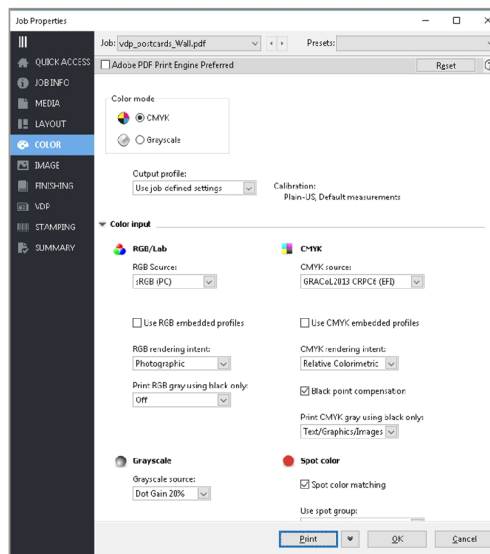
Watch video

fiery.efi.com/CWS6-express-videos/color-settings

The new COLOR tab presents all settings on the main screen, grouped in three areas, in order of importance.

The first area shows the colour mode selection and the output profile. The output profile shows the date when the calibration was done for the paper associated with the output profile, so operators can decide whether they need to do a new calibration.

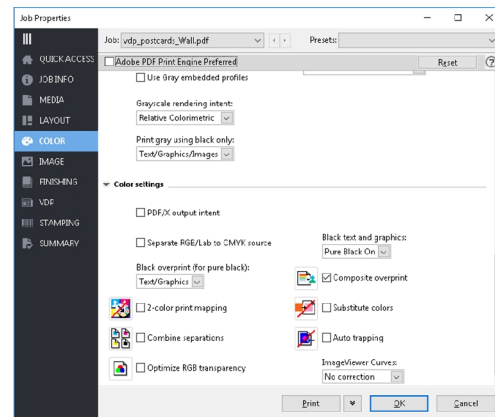
After this, the "Color input" area displays the settings for the RGB/LAB, CMYK and Spot colour input sources.



COLOR tab in Job Properties – Color input

The third area is for the "Color settings" with features for advanced users or very specific colour rendering needs. These are available in fewer clicks, with no need to go to additional screens.

The COLOR tab offers access to Help content about colour settings, where users can find access to educational resources to learn more about the new layout for colour settings.



COLOR tab in Job Properties – Color settings

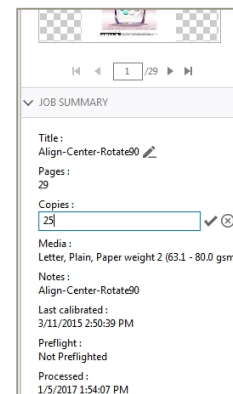
In-line editing

Users can change key job settings without opening Job Properties. In Command WorkStation 6, this function is now in the Job Summary pane to improve the speed and precision of edits.

This allows users to quickly edit job settings such as job name or number of copies, and to apply an automated workflow. The check and X icons provide more precise editing, avoiding errors and waste due to entering the wrong print settings.



Watch video
fiery.efi.com/CWS6-express-videos/inline-editing



In-line editing

New tools for production managers

Home view

Home view is a new interface in Command WorkStation 6 that offers at-a-glance status of all connected Fiery servers and a snapshot of key print production statistics.

Server status

Users in a multiple-printer environment can monitor their printers from a single view and can see:

- A fast, high-level view of the current state of printers
- The status of what's being printed on every printer in the shop
- An alert if a printer requires immediate attention

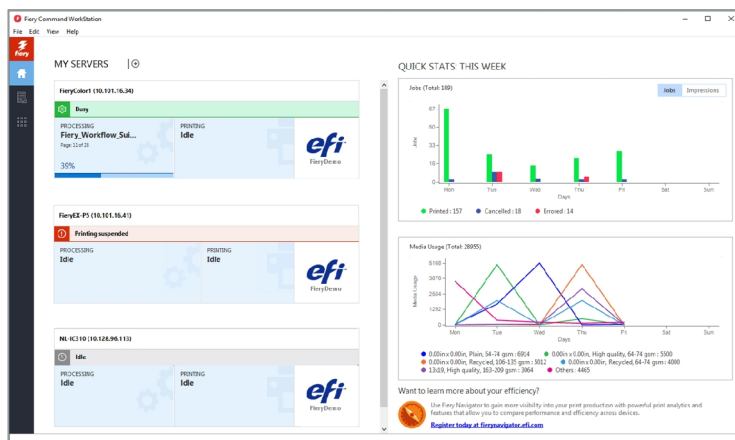
Quick production metrics

Home view also offers a snapshot of key print production statistics during the last week. The production statistics are presented in two charts.

In the first chart, users can toggle between jobs and impressions. The jobs chart tracks the number of jobs printed and cancelled per day. The impressions chart represents the number of pages produced each day, and displays colour and black-and-white impressions in different colours to show variations in the click combination.

The second chart tracks media usage per day. It reports the first five most commonly used media in the week, using different colours for easy identification.

If users want to gain even more visibility into print operations, they can use Fiery Navigator, a cloud-based platform, for powerful print analytics and features that allow them to compare performance and efficiency across devices. Fiery Navigator is free for the first three Fiery servers. Get started by downloading the agent from Fiery Software Manager.



Home view

These key production statistics can help managers:

- Identify at a glance when any of the printers needs attention due to print errors or paper jams
- Gain visibility into key production metrics to make proactive management decisions
- Gain better operational control over multiple engines, with a quick overview of all Fiery servers
- Quickly see printer performance over the last week

Fiery Updates

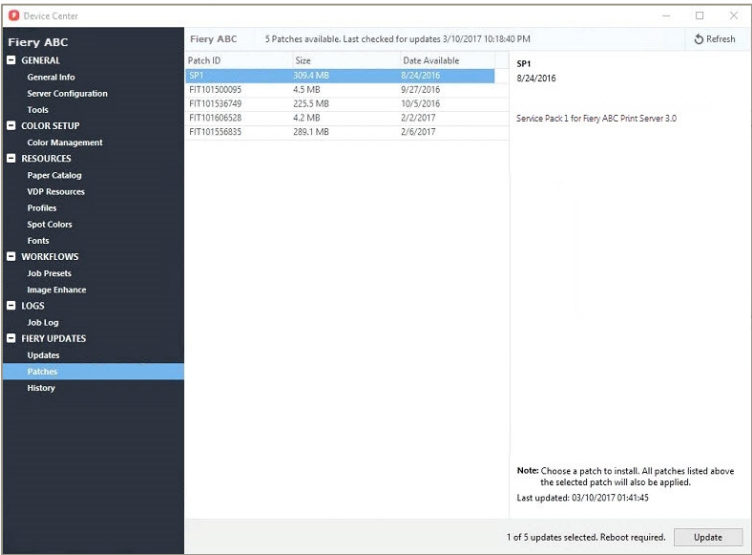
Timely software updates are critical for optimal operation of Fiery servers. Command WorkStation offers administrators a way to get notifications, downloads, and installation of approved and released Fiery system updates.

Administrators access Fiery Updates through the Device Center and can perform updates, even from remote client computers. This way, even Fiery servers that may not be connected to the internet can still be updated. At the Fiery Updates screen, users can also see all the patches and service packs available and waiting to be installed for external or embedded servers

Fiery Updates ensures the right sequence of patch updates to guarantee effective installation and avoid incompatibilities.

In addition, Fiery Updates provides an easy way to update Fiery API software.

To determine if a Fiery server can receive updates using Fiery Updates in Command WorkStation, users need to simply check the Fiery Updates tab on a client connected to the internet to see the list of updates available.



Fiery Updates

Set Defaults

Please [see above](#) for information about this feature

New features in Fiery makeready products

New versions of Fiery Impose, Compose, and JobMaster are included in the Command WorkStation 6 download. These new versions of Fiery makeready products will enable users to produce high-value print products more profitably, in less time, and with fewer clicks.

There are features that help simplify imposition layout creation and automation setup, making it easier for users to create new layout templates and automate job imposition.

Users also gain more control over late-stage edits, without the need to go back to designers for content modification. This will speed up turnaround time and help print shops achieve higher profitability.

New features include:

- Usability enhancements
- Fiery Impose
 - Gangup automation by media size
 - Auto page rotation
 - Presets for marks
 - Mixed Media for VDP booklet covers
 - 30-day free trials
- Fiery JobMaster
 - Image stamping
 - Import scanned pages
 - Page offset



Usability enhancements

There are six great new features that improve the ease of use in all Fiery makeready solutions:

1. Easier preference setting
2. Ability to preserve window and pane size
3. Show media colour
4. Enhanced page insertion
5. Faster job saves
6. Quicker sheet size selection

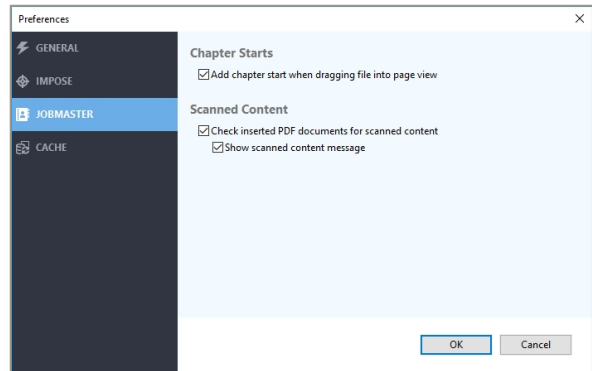
Easier preference setting

User preferences for Impose, Compose, and JobMaster can now be managed from within those applications. This way, users can control their preferences without leaving the makeready application.

Fiery Impose adds a barcode format preference, specifically for Duplo finishers with 3-digit barcode support.

The new Fiery JobMaster preferences include options that help speed up job assembly:

- Add chapter start when dropping files into page view — Many times, users insert entire chapters or sections into a job. If this preference is checked, JobMaster will automatically add a chapter start to the first page of each dropped file, saving clicks and time.
- Check inserted PDF document for scanned content — For users who frequently need to clean up scanned PDF documents using Fiery JobMaster, the application will pop up the Preview and Edit window when JobMaster detects scanned images in an imported PDF.
- Show scanned content message — This preference gives users an option to review and clean up scanned images when they are detected in the imported files. This is useful to review and edit scanned files occasionally, rather than all the time, and helps speed up the import process when no preview is required.



Preferences in Impose, Compose and JobMaster

Preserve window and pane size

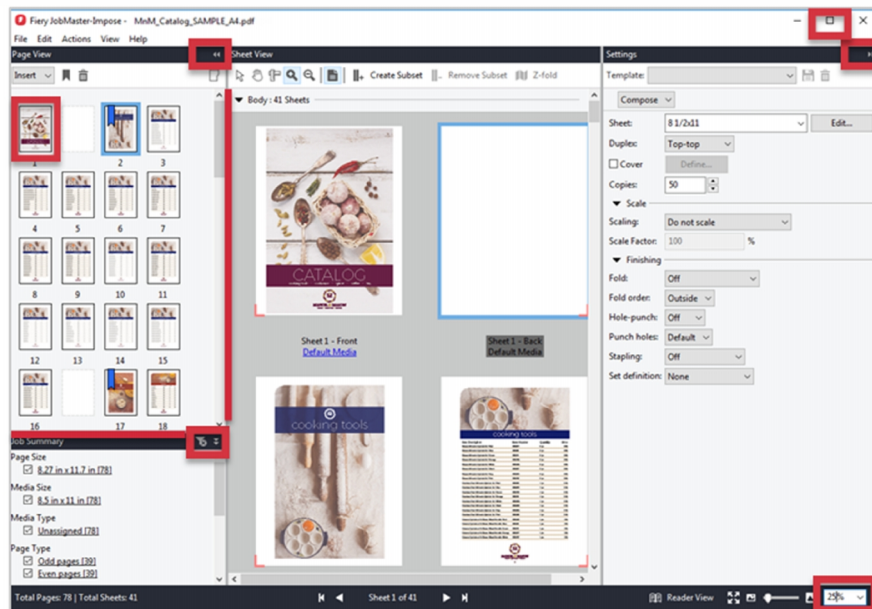
Different users have different ways they prefer to preview jobs and to access makeready tools.

Now Fiery Impose, Compose, JobMaster, Preview, and Raster Preview preserve the window size and layout of the different panes so that users have a consistent experience when re-opening the Command WorkStation application.

Users can preserve:

- Size and location of the main window
- Separation bar positions
- State of collapsible panes
- Zoom levels, including thumbnail-size levels

Preserving preferences in the interface layout not only makes Command WorkStation easier to use, it also saves time because users don't have to set up their preferred view repeatedly.

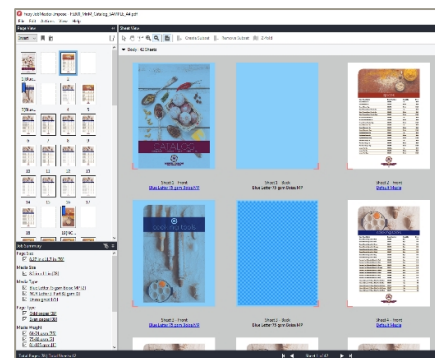


Preserve window and pane size

Show media colour

This feature displays the colour of the media in the Sheet View pane, for a visual confirmation of the media selection and a reference for fast media identification in long documents. It also gives a quick preview reference of the printed output. This gives users:

- Fast media identification
- Fewer errors in media assignments, with better visual confirmation
- A way to easily spot different media colours set for sheet(s) in a job

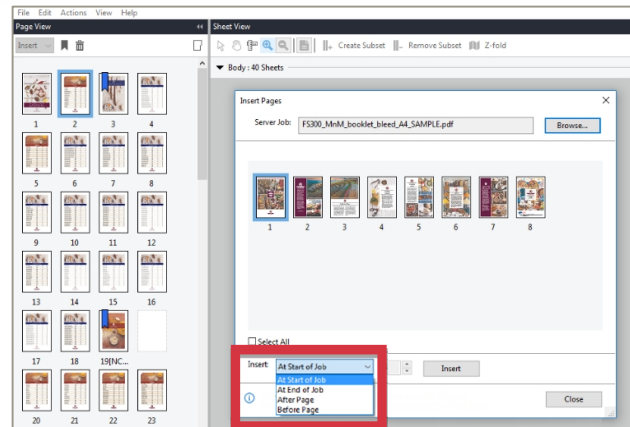


Show media colour

Page insertion enhancements

When assembling a long document, it is sometimes hard to insert new pages by dragging and dropping them into the exact location by scrolling in the Page View.

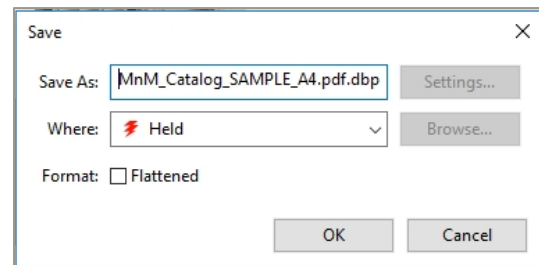
The Insert Page interface provides users with a way to specify where to insert the selected page(s) in addition to drag and drop. So, inserting a page into an exact location in a hundred-page document becomes a breeze.



Page insertion options

Faster job saves

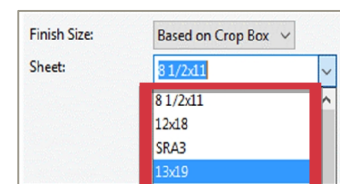
The save job interface is now streamlined. The save dialog also now remembers the last settings used when saving a job, making future selections faster.



Save options

Faster sheet size selection

It can be a time-consuming and tedious task to scroll through the long list of sheet sizes to pick out the right size, and repeat it for every job a user sets up. This new feature speeds up the sheet size selection by remembering the last five sheet sizes you have used. For each layout mode, (compose, normal, booklet, gangup layout), users have a separate last-used sheet-size list.



Sheet size selection

Fiery Impose new features

Gangup automation by media size

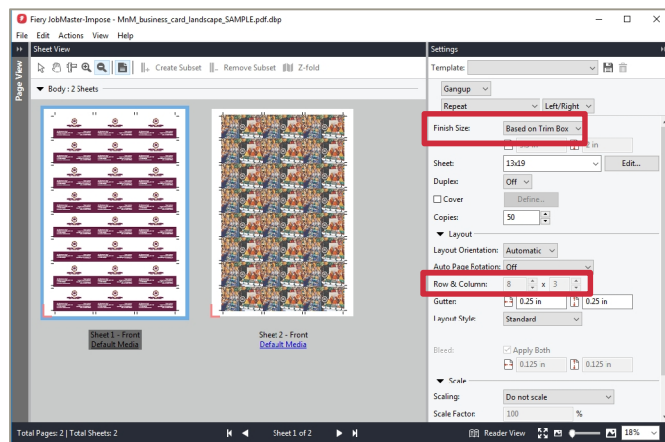
Gangup imposition templates can use the new Based on Trim Box finish size that uses the trim box defined in the document. Fiery Impose calculates the best layout (n-up and orientation) on the fly, considering the desired media size to print on.

Based on Trim Box finish size reads the trim box of the first page of the document and disables the row and column fields. When the user selects the sheet size, the row and column values are automatically calculated to maximise the sheet surface.

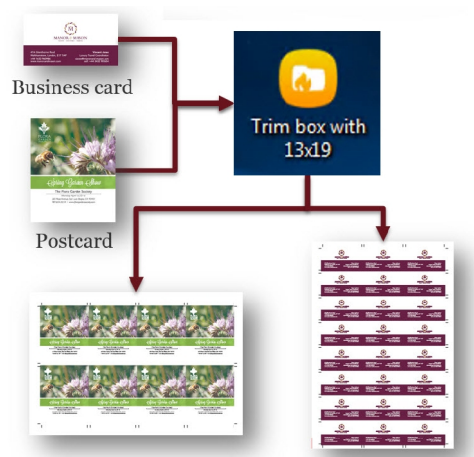
In other words, the best-fit for gangup feature can be saved as a template to automate layout. Bear in mind that gangup unique and repeat are different layout types. Each of them require a separate template per media size. Users then have fewer gangup templates to manage, with only one imposition template per gangup type and sheet size.

Imposition templates created with the Based on Trim Box finish size setting can be used in Fiery Hot Folders and Fiery JobFlow* workflows.

For example, users can set up a single Hot Folder for 13x19-inch media to process business cards and post cards. Fiery Impose will produce the best-fit layout based on each product size, while maximizing the paper usage. This type of workflow will greatly reduce the time and effort required to set up gangup automation.



Based on Trim Box finished size



Auto page rotation

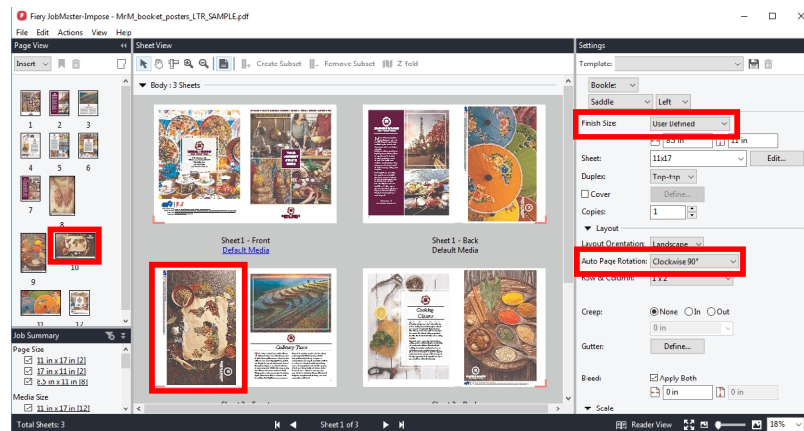
When jobs come in, pages are sometimes created with a different page orientation than the document orientation. This requires users to pick out those pages, and rotate them to print with the right orientation and paper size.

With Auto Page Rotation, Fiery Impose can automatically detect and rotate pages in a job to ensure that all pages have the same orientation. Users can also include the rotation requirements in a Fiery Impose template, and apply it to automation workflows using User Defined or Based on Trim Box finish sizes.

This capability is especially important for transactional printing where a job contains hundreds or thousands of pages, and some pages need to be rotated 90 degrees before the job can be imposed.

Auto Page Rotation can be automated with Imposition templates using Fiery Hot Folders and Fiery JobFlow* workflows.

* Requires Fiery JobFlow v2.2.4 or later. Refer to the table in Automation workflow support section below for other supported workflows in Fiery FS200 Pro servers.



Auto page rotation

Automation workflow support

Fiery Command WorkStation 6 does not change any of the license requirements for Fiery Impose. This section clarifies licensing requirements by Fiery system software and automation workflow type.

A Fiery Impose license is always required wherever the imposition template is created. Licensing requirements differ when using imposition templates depending on the type of Finish Size chosen for the template.

Requirements for "User Defined" and "Based on Trim Box" Finish Size

- Fiery Hot Folders and Fiery JobFlow require a Fiery Impose license on the client
- Virtual Printers, Server Presets and Job Properties require a Fiery Impose license on the Fiery server (FS200 Pro and above only)

Fiery system version	To use Impose templates				
	Requires Impose license installed on the <u>client</u>		Requires Impose license installed on the <u>server</u>		
	Hot Folders	JobFlow	Job Properties	Server Presets	Virtual Printers
FS200 Pro	✓	✓	✓	✓	✓
FS200, FS150 Pro / FS150 FS100 Pro /FS100 System 10 / 10e	✓	✓	Not supported	Not supported	Not supported

Starting with Fiery FS200 Pro system software, users no longer need to upgrade their Fiery server to benefit from new imposition capabilities, specially imposition automation with "User Defined" and "Based on Trim Box" finish size templates through Job Properties, Server Preset and Virtual Printers. Fiery users can get new capabilities built for these finish sizes, simply by:

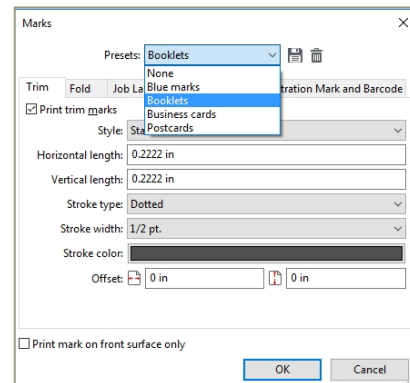
- Installing the latest Fiery Command WorkStation version on the Fiery server
- Activating a Fiery Impose license on the Fiery server for server-based workflows

Requirements for "Based on Crop Box" Finish Size

There are no additional requirements for the Fiery Impose license when using imposition templates based on this finish size. New capabilities built using the "Based on Crop Box" finish size are offered through Fiery Command WorkStation or Fiery server upgrades.

Presets for marks

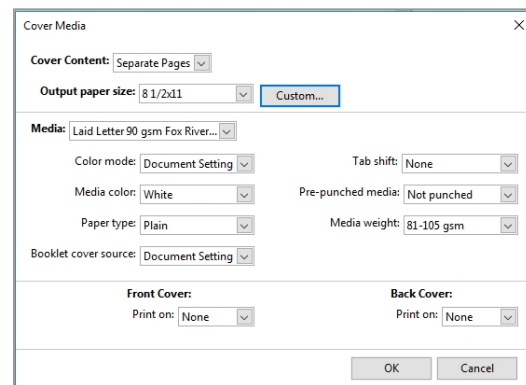
Users tend to use the same printer marks repeatedly. Now they can save their preferred mark settings as presets on a client machine and reuse it for future jobs. Having the ability to reuse mark settings with one click will help users speed up their imposition setup.



Presets for marks

Mixed Media for VDP booklet covers

Variable data printing is becoming more popular. Users like the Fiery Impose capability to define a booklet layout for VDP jobs. This new feature will allow users to set media for the covers of VDP booklets that is different than the body pages. It's supported in external Fiery servers running Fiery FS150 Pro software and above.



Cover Media definition for VDP jobs

* Requires Fiery JobFlow v2.2.4 or later

Free 30-day trials

Similar to Fiery JobMaster, Fiery JobFlow and Fiery Graphic Arts Package, Premium Edition, users have a chance to experience the benefits of Fiery Impose for free during 30 days. Users can request a 30-day trial license at efi.com/impose.

A Fiery Impose trial license will not give users access to Acrobat Pro or Enfocus PitStop Edit. Those additional tools are available in the full Fiery Impose or Fiery JobMaster licensed products.



Fiery JobMaster new features

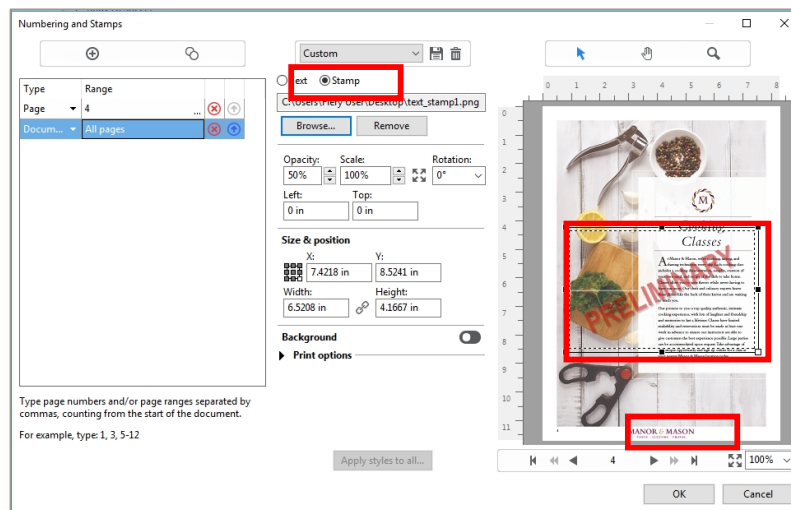
Image stamping

Users now have an easy way to add company logos, watermarks, and graphic illustrations to documents in the makeready process. This allows operators to customise a job quickly without requiring a designer to go back to the native application.

They can add images to a page or a range of pages with just a couple of clicks. There is no limit to the quantity of images users can add, and pages can have more than one image on them.

The Image Stamping feature offers a wide variety of adjustments that provide finer control of stamp placements, and give users more confidence that they can comply with a customer's job requirements and deliver a more polished job.

Users can preview all image adjustments with instant visual feedback. Some of the adjustments include image location, opacity, size, rotation, offset, and background colour.



Stamp options

Import scanned images

In addition to scanning documents directly into JobMaster, users can now insert previously scanned documents into the job assembly process with enhanced cleanup tools.

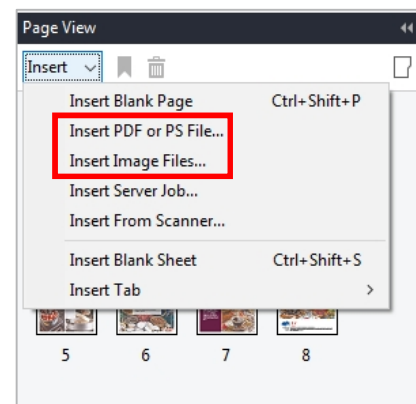
Users can insert scanned documents in PDF or all commonly used image file formats (bmp, gif, jpg, jpeg, pdf, tif, png, and tiff).

When users insert PDF files, JobMaster automatically detects scanned pages in the document and will display only the scanned pages in the Preview & Edit window for cleanup.

Poorly scanned documents may need additional manual de-skewing. New fine rotation controls in the Preview & Edit interface let users apply up to 15 degrees of rotation to the selected pages.

With this feature there are now three ways users can insert scanned documents:

- Inserting PDF files — JobMaster can automatically detect if there are scanned pages in the document and will display only the scanned pages in the Preview & Edit window for cleanup before inserting the file.



Insert options in JobMaster

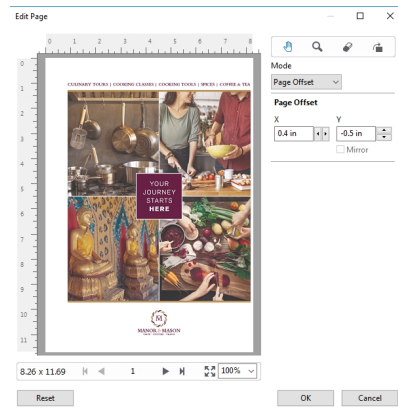
- Inserting an image file — Users select one or multiple image files, and JobMaster will display the scanned pages in the Preview & Edit window for cleanup before inserting the files.
- Inserting from scanner — JobMaster performs the scanning process and presents the Preview & Edit window before importing the file.

Page offset

This type of fast page content adjustment helps users deliver professional-looking print products

Now users can easily move page content to accommodate various finishing requirements in the Page Edit interface.

They can move the page placement up and down vertically, and left and right horizontally to make room for finishing such as hole punch, bleed-edge tabs, staples, or coil binding. They can also mirror the new page placement in duplex jobs.



Page Offset mode in Edit Page window

Integration enhancements

Fiery API v4

Shops with custom tools and applications need a way to integrate them with the Fiery DFE. They can download the latest Fiery API using the Fiery Integration Package or Fiery Updates. Version 4.0 adds new APIs and usability improvements to easily integrate in-house tools and applications to Fiery servers for unique business needs such as:

- Job submission with Paper Catalog ID — Submitting jobs from custom applications now becomes much simpler, allowing developers to specify media with a unique Paper Catalog ID.
- Partial search for jobs — This allows in-house applications to filter and search jobs on the Fiery server by the exact value or partial value, and based on desired job attributes such as job titles and job status. For example, applications can search "efijob" to see "efijob01" and "efijob02", instead of calling the exact 2 names.
- WebSockets API support — WebSockets API enables live-event-based connectivity with custom applications. Developers can open an interactive live communication session between a custom application and the Fiery server. With this API, they can send messages to a server and receive event-driven responses (such as job status: spooling, printing, printed, error; or press status: printing, paper jam, toner low, etc.) without having to constantly poll the server for a reply. So the events are 100% live without delay and give a fast response with efficient data traffic (uses less computational power and data than polling).

Fiery JDF v1.5

Fiery Integration Package provides the easiest way to install and configure the latest Fiery JDF. The latest Fiery JDF provides numerous enhancements for integrated workflows with EFI Productivity Software, third-party prepress workflows, as well as in-house custom integrations. The enhancements include memory usage optimisation and stability improvements, plus new JDF-enabled Fiery features:

- Define chapter — This feature provides an easy way to automate chapter creation for long documents and submit batch tasks with multiple documents included in one job with separators or chapters. It allows integrated upstream software to specify chapter starts by entering the document's page number using JDF. The functionality is equivalent to the Fiery Chapters feature from Job Properties.
- Rotate content layout — Provides the JDF interface to specify automatic 180-degree rotation for layout adjustments. The functionality is equivalent to the Fiery server's Rotate 180 feature from Job Properties.

Additional resources

The following is a list of sales, training and technical resources to help you broaden your knowledge in Fiery Command WorkStation 6 and related products and applications.

Fiery Command WorkStation 6 main webpage	efi.com/cws
Fiery Command WorkStation 6 download	fiery.efi.com/cws6-download
Fiery Impose 30-day free trial request	efi.com/impose
Fiery JobMaster 30-day free trial request	efi.com/jobmaster
Fiery Graphic Arts Package, Premium Edition 30-day free trial request	efi.com/gappe
Fiery JobFlow 30-day free trial request	efi.com/jobflow
Fiery makeready solutions comparison	fiery.efi.com/makeready-comparison
Training resources at Learning@EFI	learning.efi.com
Fiery Forums	fieryforums.efi.com
Fiery Command WorkStation 6 Help documentation	http://help.efi.com/cwspackage/index.html