

# Top reasons to buy the MX-PE13 Fiery print server

Because the investment horizon for a new digital printing system is from three to five years, it's always good to consider both current and future needs of your print environment when deciding on a new digital printing system. EFI® offers two Fiery® server platforms for the Sharp Pro Series MX-7090N and MX-8090N Colour Document Systems — the external MX-PE13 Fiery Print Server and embedded MX-PE14 Fiery Print Server. These two server platforms vary by the level of PDF processing controls, automation, productivity, workflow integration and expandability they offer.

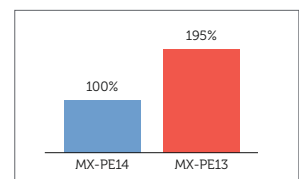
This document helps you understand the benefits of an external Fiery server, how it meets your current needs, and how it offers built-in flexibility for future growth.

## MX-PE13 Fiery Print Server only: Standard features

The MX-PE13 Fiery Print Server comes with standard features that add productivity, quality and new services to your production environment. These features are not available on the MX-PE14 Fiery Print Server.

### 1. Faster turnaround times

To maximise your engine capacity, you need a high-powered digital front end to process and drive data fast enough to minimise engine idle time. More robust and powerful hardware specifications make the MX-PE13 Fiery Print Server twice as fast compared to the MX-PE14 Fiery Print Server, making it the best choice for production environments.



### 2. Flexible variable data printing (VDP) services

The robust, open, flexible, and scalable Fiery solution supports all leading VDP formats including PDF-VT, Creo VPS, PPML, and works with all leading VDP composition software and formats for seamless workflows. The faster processing speed also makes offering VDP services more profitable.



## MX-PE13 Fiery Print Server only: Standard features (continued)

### 3. Perfect PDF printing in a pure PDF workflow

Fiery external servers include the Adobe® PDF Print Engine (APPE) interpreter for end-to-end native PDF workflows. This allows consistency and flexibility from design to output in hybrid digital and offset print environments, and also ensures correct representation of colour spaces and transparencies.



### 4. A way to offer pad printing

With external Fiery servers, operators can print pads with ease from a single-page job, and with minimal manual collation of the printed output.



### 5. Fiery QuickTouch™ software

The MX-PE13 Fiery Print Server features the new Fiery NX Pro hardware. The NX Pro includes [Fiery QuickTouch](#) software on the touchscreen display, which gives faster views of job status information and access to server management. With just a tap, the touchscreen display gives operators easy access to intuitive system installation, backup and restore, plus system diagnostics.



### 6. Windows® 10 OS security

Fiery external servers comply with the latest corporate IT standards and provides more efficient administration and implementation of security patches. You can also easily implement standard industry practices such as running anti-virus software.



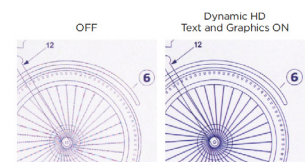
### 7. Control panel integration with Fiery Command WorkStation

Easily manage jobs with Fiery Command WorkStation fully integrated at the Sharp touch-screen for unmatched control and ease of use.



### 8. Dynamic HD Text and Graphics

Dynamic HD Text and Graphics and Reverse Text and Graphics Growth are EFI exclusive features that reproduces accurately ultra-thin lines, small text, and fine details in the printed output.



## MX-PE13 Fiery Print Server: Optional features

External Fiery servers offer optional software and hardware solutions that add advanced prepress, makeready, automation and workflow integration for high-production print facilities. These features are not available on the MX-PE14 Fiery Print Server.

### 1. A powerful makeready option to produce differentiated output

Add [Fiery JobMaster™](#) to offer advanced PDF makeready capabilities such as insertion of tab pages without the need to design them in the native application, multi-bank and bleed-edge tab setup, page merging, media assignment, finishing, page numbering, plus hard-copy scanning and cleanup. This allows you to produce jobs completely inline and reduce labour costs on manual tab insertion.



### 2. The ability to identify and troubleshoot file problems before it's too late

Fiery Preflight, a feature in the [Fiery Graphic Arts Package, Premium Edition](#), quickly checks for missing spot colours, VDP elements, or low resolution images. It prevents problem jobs from printing and helps troubleshoot issues faster.



### 3. Secure storage for print files

The optional removable hard disk drive kit allows you to lock the server drive into the system for normal operation and remove it to a secure location after powering down the server.



### 4. A centralised production workspace for operators

Operators can make pre-production changes from the [Fiery NX Station LS or GL](#), a higher-efficiency, ergonomically designed work area. The monitor displays the Fiery Ticker for an at-a-glance view of the printing status at a distance.



## MX-PE14 Fiery Print Server: Optional features

While these features are standard on the MX-PE13 Fiery Print Server, you may add them as options to the MX-PE14 Fiery Print Server by purchasing the [Fiery Productivity Package](#) or stand-alone software tools. Be sure to compare the cost of the MX-PE14 Fiery Print Server with the additional software added for a more accurate comparison to the MX-PE13 Fiery Print Server.

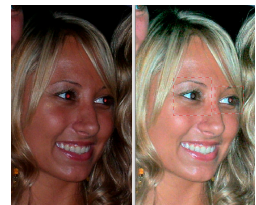
### 1. Automated Web-to-Print submission, and integration with EFI MIS systems

Fiery servers were the first DFEs certified by CIP4 job definition format (JDF) IDP-ICS. By adhering to this standard, Fiery servers integrate seamlessly with EFI MIS and Web-to-Print systems as well as with industry-leading third-party prepress workflow solutions such as Agfa Apogee, Heidelberg Prinect and Kodak Prinergy. This helps you more efficiently deliver job specifications, update job status in real time, track job costing data and validate equipment usage.



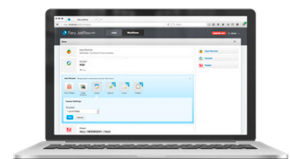
### 2. Superior photographic prints

[Image Enhance Visual Editor](#), a Command WorkStation plug-in, allows operators to make last-minute edits to a selected image without having to open the image in applications such as Adobe Photoshop®.



### 3. Don't touch what you can automate

Use [Fiery JobFlow™ Base](#) to build easy-to-use workflows. Perform essential job processing tasks, submit files to the proper location or just drag and drop right on to the workflow, and archive jobs at various processing stages for later reuse. Receive email notifications on the job processing steps, as well as manage workflows for maximum productivity.



## Server comparison

FIERY SERVER	EXTERNAL MX-PE13 FIERY PRINT SERVER	EMBEDDED MX-PE14 FIERY PRINT SERVER
Fiery System Software	Fiery FS300 Pro	Fiery FS300
Fiery Platform	NX Pro	E <sup>100</sup>
CPU	Intel® Core™ i5-6500 Processor, 3.2 up to 3.6 GHz with Turbo, Quad Core	Intel® Celeron® Processor G1820, 2.7 GHz, Dual Core
Operating System	Microsoft® Windows® 10 IoT Enterprise 2016 LTSB	Linux
RAM / Hard Disk Drive (HDD)	8 GB / 1 TB SATA	2 GB / 500 GB SATA
Removable HDD	OPTIONAL	Not available
Removable Storage	OPTIONAL	Not available
VDP Formats	PPML 3.0, PDF/VT-1, PDF/VT-2, VPS, Fiery FreeForm™	Fiery FreeForm
Adobe® PDF Print Engine (APPE)	INCLUDED	Not available
Set Page Device, Sequential Print	INCLUDED	Not available
PDF/X Output Intent	INCLUDED	Not available
Pad Printing	INCLUDED	Not available
Control panel integration with Fiery Command WorkStation	INCLUDED	Not available
Dynamic HD Text and Graphics, and Reverse Text and Graphics Growth	INCLUDED	Not available
FEATURES AVAILABLE IN OPTIONAL FIERY PACKAGES		
Fiery JDF, Integration to EFI MIS and Web-to-Print systems	INCLUDED	OPTIONAL with Fiery Productivity Package
Image Enhance Visual Editor	INCLUDED	OPTIONAL with Fiery Productivity Package
Print Next, Process Next, and Schedule Printing	INCLUDED	OPTIONAL with Fiery Productivity Package
ImageViewer, Configurable Auto Trapping, Control Bar, Graphic Arts Filters for Hot Folders, Postflight	OPTIONAL with Fiery Graphic Arts Package, Premium Edition	OPTIONAL with Fiery Productivity Package
Fiery JobFlow Base	INCLUDED	OPTIONAL with Fiery Productivity Package
Fiery JobFlow *	OPTIONAL	OPTIONAL, requires Fiery Productivity Package
Fiery Preflight	OPTIONAL with Fiery Graphic Arts Package, Premium Edition	Not available
Fiery NX Station LS (Adjustable Fiery work stand, proximity sensor, Fiery Ticker, 27" monitor, wireless keyboard and mouse)	OPTIONAL	Not available
Fiery NX Station GL (Fiery work stand, Fiery Ticker, 22" monitor, wireless keyboard and mouse)	OPTIONAL	Not available
Fiery Impose*	OPTIONAL	OPTIONAL
Fiery Compose	OPTIONAL	OPTIONAL
Fiery JobMaster*	OPTIONAL	Not available
Fiery Graphic Arts Package, Premium Edition*	OPTIONAL	Not available
Fiery Productivity Package	Not Available	OPTIONAL
Fiery Color Profiler Suite **	OPTIONAL	OPTIONAL
For more information on all of the features, see the MX-PE13 and MX-PE14 Fiery Print Server datasheets on the <a href="#">engine webpage</a> .		

\* Free 30-day trial available

\*\* Free trial in demo mode

Visit the [Fiery Graphic Arts Package, Premium Edition](#) and [Fiery Productivity Package](#) web pages for more information on features included in each package.

## EFI fuels success.

We develop breakthrough technologies for the manufacturing of signage, packaging, textiles, ceramic tiles, and personalised documents, with a wide range of printers, inks, digital front ends, and a comprehensive business and production workflow suite that transforms and streamlines the entire production process, increasing your competitiveness and boosting productivity. Visit [www.efi.com](http://www.efi.com) or call 0808 101 3484 (UK only) or +44 (0)1246 298000 for more information.



Nothing herein should be construed as a warranty in addition to the express warranty statement provided with EFI products and services.

The APPS logo, AutoCal, Auto-Count, Balance, BESTColor, BioVu, BioWare, ColorPASS, Colorproof, ColorWise, Command WorkStation, CopyNet, Cretachrom, Cretaprint, the Cretaprint logo, Cretaprinter, Cretaroller, Digital StoreFront, DirectSmile, DocBuilder, DocBuilder Pro, DockNet, DocStream, DSFdesign Studio, Dynamic Wedge, EDOX, EFI, the EFI logo, Electronics For Imaging, Entrac, EPCount, EPPhoto, EPRegister, EPStatus, Estimate, ExpressPay, FabriVU, Fast-4, Fiery, the Fiery logo, Fiery Driven, the Fiery Driven logo, Fiery JobFlow, Fiery JobMaster, Fiery Link, Fiery Navigator, Fiery Prints, the Fiery Prints logo, Fiery Spark, FreeForm, Hagen, InktenSity, Inkware, Jetrion, the Jetrion logo, LapNet, Logic, Metrix, MicroPress, MiniNet, Monarch, OneFlow, Pace, Pecas, Pecas Vision, PhotoXposure, PressVu, Printcafe, PrinterSite, PrintFlow, PrintMe, the PrintMe logo, PrintSmith, PrintSmith Site, PrintStream, Print to Win, Prograph, PSI, PSI Flexo, Radius, Remoteproof, RIPChips, RIP-While-Print, Screenproof, SendMe, Sincolor, Splash, Spot-On, TrackNet, UltraPress, UltraTex, UltraVu, UV Series 50, VisualCal, VUTEk, the VUTEk logo, and WebTools are trademarks of Electronics For Imaging, Inc. and/or its wholly owned subsidiaries in the U.S. and/or certain other countries.

All other terms and product names may be trademarks or registered trademarks of their respective owners, and are hereby acknowledged.