

# Fiery<sup>®</sup> FS350 Pro and Fiery FS350

What's New Product Guide



# What's inside:

|  |    |
|--|----|
| New features in Fiery FS350/FS350 Pro print servers.....                     | 3  |
| Color & Imaging.....   | 4  |
| APPE 4.4.....  | 4  |
| Inline measurement device support for calibration .....                      | 4  |
| Fiery Smart Estimator in Command WorkStation.....                            | 5  |
| Smart white .....  | 6  |
| Fiery Graphic Arts Package, Premium Edition/Fiery Productivity Package ..... | 7  |
| Fiery ImageViewer new features .....   | 7  |
| Productivity.....  | 10 |
| HyperRIP support for record range .....                                      | 10 |
| Fiery FreeForm master on top.....  | 10 |
| Fiery Impose – Duplo finisher layout import .....                            | 11 |
| Management .....   | 13 |
| Fiery Command WorkStation 6.3.....   | 13 |
| Fiery driver 6.3.....  | 15 |
| Copy numbering.....  | 16 |
| Scale to fit sheet size.....   | 17 |
| Raster preview from back.....  | 17 |
| New features in Fiery Impose.....  | 18 |
| New features in Fiery JobMaster .....  | 18 |
| Connection .....   | 20 |
| Native 64-bit applications .....   | 20 |
| Archive Manager.....   | 20 |
| Fiery JDF 1.6.....   | 21 |
| Fiery Installer Builder .....  | 21 |
| Security updates .....   | 22 |
| Debian 8.....  | 22 |
| Learning@EFI On-demand learning platform .....                               | 22 |
| EFI Communities .....  | 23 |
| Discontinued features.....   | 25 |
| Additional resources.....  | 25 |

## EFI fuels success.

We develop breakthrough technologies for the manufacturing of signage, packaging, textiles, ceramic tiles, and personalized documents, with a wide range of printers, inks, digital front ends, and a comprehensive business and production workflow suite that transforms and streamlines the entire production process, increasing your competitiveness and boosting productivity. Visit [www.efi.com](http://www.efi.com) or call XXX-XXX-XXX-XXX for more information.



Nothing herein should be construed as a warranty in addition to the express warranty statement provided with EFI products and services.

The APPS logo, AutoCal, Auto-Count, Balance, BESTColor, BioVu, BioWare, ColorPASS, Colorproof, ColorWise, Command WorkStation, CopyNet, Cretachrom, Cretaprint, the Cretaprint logo, Cretaprinter, Cretaroller, Digital StoreFront, DocBuilder, DocBuilder Pro, DockNet, DocStream, DSFdesign Studio, Dynamic Wedge, EDOX, EFI, the EFI logo, Electronics For Imaging, Entrac, EPCount, EPPhoto, EPRegister, EPStatus, Estimate, ExpressPay, FabriVu, Fast-4, Fiery, the Fiery logo, Fiery Driven, the Fiery Driven logo, Fiery JobFlow, Fiery JobMaster, Fiery Link, Fiery Navigator, Fiery Prints, the Fiery Prints logo, Fiery Spark, FreeForm, Hagen, InkIntesity, Inkware, LapNet, Logic, Metrix, MicroPress, MiniNet, Monarch, OneFlow, Pace, Pecas, Pecas Vision, PhotoXposure, PressVu, Printcafe, PrinterSite, PrintFlow, PrintMe, the PrintMe logo, PrintSmith, PrintSmith Site, PrintStream, Print to Win, Prograph, PSI, PSI Flexo, Radius, Remoteproof, RIPChips, RIP-While-Print, Screenproof, SendMe, Sincolor, Splash, Spot-On, TrackNet, UltraPress, UltraTex, UltraVu, UV Series 50, VisualCal, VUTEK, the VUTEK logo, and WebTools are trademarks of Electronics For Imaging, Inc. and/or its wholly owned subsidiaries in the U.S. and/or certain other countries.

All other terms and product names may be trademarks or registered trademarks of their respective owners, and are hereby acknowledged.

# Introduction

The Fiery® FS350/FS350 Pro system is the most innovative, scalable, and integrated digital front end (DFE) for digital print engines, ensuring customers get the highest return on their investment. New features in the latest release:

- Provide substantial gains in productivity
- Deliver accurate and amazing color
- Include impressive improvements in ease of use
- Enhance integration that will help commercial and digital printers reduce costs and improve service

Fiery FS350 is available for embedded Fiery servers, and Fiery FS350 Pro is for external Fiery servers.

## ***New features in Fiery FS350/FS350 Pro print servers***

| Color & Imaging  | Productivity   | Management   | Connection   |
|--|--|--|--|
| <ul style="list-style-type: none"> <li>• APPE 4.4</li> <li>• Inline measurement device support                             <ul style="list-style-type: none"> <li>• Automatic calibration updates</li> </ul> </li> <li>• Fiery Smart Estimator in Fiery Command WorkStation®</li> <li>• Smart white</li> <li>• Fiery ImageViewer                             <ul style="list-style-type: none"> <li>• Color replacement</li> <li>• Split view**</li> </ul> </li> </ul> | <ul style="list-style-type: none"> <li>• HyperRIP support for record range*</li> <li>• Fiery FreeForm master on top</li> <li>• Duplo finisher layout import**</li> </ul> | <ul style="list-style-type: none"> <li>• Fiery Command WorkStation 6.3**                             <ul style="list-style-type: none"> <li>• Unified print room</li> <li>• Thumbnail view</li> <li>• HiDPI monitor support</li> <li>• Export current view</li> <li>• Link to EFI Smart Support</li> </ul> </li> <li>• Fiery driver 6.3</li> <li>• Copy numbering</li> <li>• Scale to fit sheet size</li> <li>• Raster preview from back</li> <li>• Fiery Impose new features</li> <li>• Fiery JobMaster new features</li> </ul> | <ul style="list-style-type: none"> <li>• Native 64-bit applications**</li> <li>• Archive Manager**</li> <li>• Fiery JDF 1.6**</li> <li>• Fiery Installer Builder</li> <li>• Security updates</li> <li>• Debian 8</li> <li>• Learning@EFI learning platform</li> <li>• EFI Communities</li> </ul> |

\* Only available on Fiery NX Premium external servers

\*\* Features that are also supported by Fiery servers compatible with Fiery Command WorkStation 6.x. For more information visit [this webpage](#).

Note: Features vary by print engine model. Please refer to the individual product datasheet or feature matrix to find out exactly which features are available.

## Color & Imaging

### APPE 4.4

Fiery FS350 *Pro servers include* version 4.4 of the Adobe PDF Print Engine (APPE) interpreter. Version 4.4 adds support for the following features:

- Overprinting of up to 123 spot colors
- A fix for an Adobe defect on CMYK+ transparency rendering
- Multi-threaded transparency blending: improves processing performance for jobs with transparencies

For additional information on APPE 4.4 visit this [web page](#).

### **Inline measurement device support for calibration**

Many cutsheet print engines include built-in inline measuring devices that can automatically measure color patches, rather than manually measuring them after printing.

Fiery Command WorkStation supports these inline measurement devices for calibration and, in some cases, for profiling purposes making the routine calibration process much faster and easier.

This guide covers inline measurement for calibration. To learn more about profiling support, visit the Fiery Color Profiler Suite web page at [www.efi.com/cps](http://www.efi.com/cps).

There are three types of inline measuring devices:

1. **Inline spectrophotometers** read color patches on paper, return spectral measurements, and can be used for both calibration and profiling purposes.
2. **Inline scanners** and colorimeters read color patches on paper and can be used for calibration purposes. In contrast to spectrophotometers, inline scanners can only return RGB values and therefore are not recommended for profiling or color verification.
3. **Belt sensors** read color patches on the belt, provide density measurements, and can perform automatic calibration updates that don't necessarily replace a recalibration process, but can maintain system calibration for a longer time.

Inline measurement devices can be used to:

#### 1. Recalibrate

These calibration sets are also compatible with the EFI™ ES-2000 spectrophotometer or other instruments supported by Fiery Color Profiler Suite.

The recalibration process doesn't require the user to measure the calibration patches manually, making the calibration process much faster and simpler.

#### 2. Create new calibration sets

The calibration process with inline measurement devices offers a faster calibration process that doesn't require much operator training or skilled knowledge and reduces errors. In the case of inline spectrophotometers, it also doesn't require investment in additional measuring devices.

#### 3. Automatic calibration updates (new in Fiery FS350 Pro)

Some print engines without an inline spectrophotometer or an inline scanner can take advantage of their belt sensors to automatically update calibration sets with the current state of the engine, without

any operator intervention. The update process is performed every time the engine requires self-adjustment. These automatic updates only affect the factory calibration settings (coated and uncoated).

All print engines have belt sensors that are used by the engine during warm-up, and for periodic self-adjustment procedures to bring engines back to a stable stage. Some belt sensors can retrieve and send measurement data to the Fiery server. With this data, the server updates its own calibration.

Automatic calibration updates offer the following benefits:

- Produces consistent output for a longer time without the need to recalibrate as often
- Print environments such as offices can rely on more consistent output without calibrating as frequently

The support of inline spectrophotometers and scanners for calibration is also available in Fiery Color Profiler Suite and doesn't require software licensing.

Consult your Fiery server user manual to learn the instrument support and capabilities for a specific Fiery server and print engine combination.

**Inline measurement device support table**

| Inline measurement device  | Recalibration | Create new calibration sets | Profiling                       | Automatic calibration updates  |
|--|---------------|-----------------------------|---------------------------------|--|
| <b>Inline spectrophotometers</b>   | Yes           | Yes                         | Yes                             | N/A. Only by engine  |
| <b>Inline scanners</b><br>Some models require a spectrophotometer such as ES-2000 to calibrate the RGB scanner for each paper type on first use and periodically thereafter. | Yes           | Yes                         | Yes, but with limited precision | N/A. Only by engine  |
| <b>Belt sensors</b>  | N/A           | N/A                         | N/A                             | Yes. Done by engine and synchronized with Fiery calibration measurements |

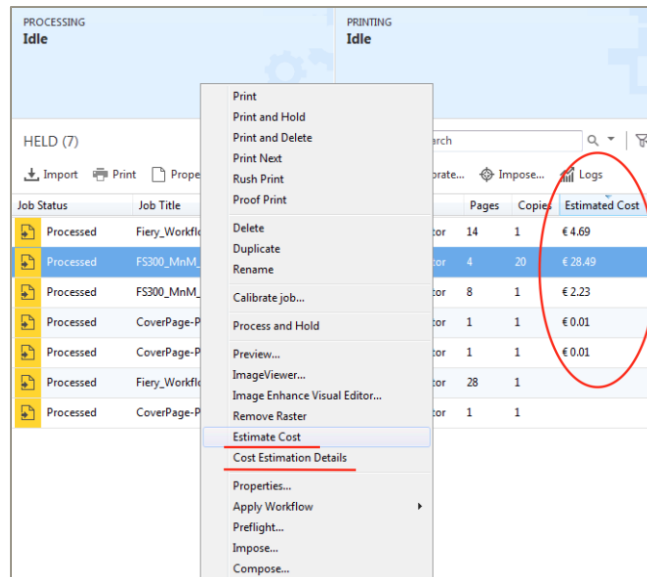
**Fiery Smart Estimator in Command WorkStation**

Accessible from Command WorkStation, the Fiery Smart Estimator provides a cost estimate for toner or ink usage before printing a job.

The estimate is done by the Fiery server and is based on the raster data of the RIPped jobs.

This feature is most useful for specialty colors, such as clear, white, gold, silver, neon colors, etc. Since ink/toner for specialty colors is purchased separately and not part of the base CMYK click charge, users can customize Fiery Smart Estimator by selecting the local currency and entering the cost per bottle, cartridge, or liter. Once the calculation is performed, the estimated cost can be displayed on a job list column, job summary pane, and cost estimation details window.

The Fiery Smart Estimator is available on a product-specific basis. Refer to your Fiery server documentation for more information.



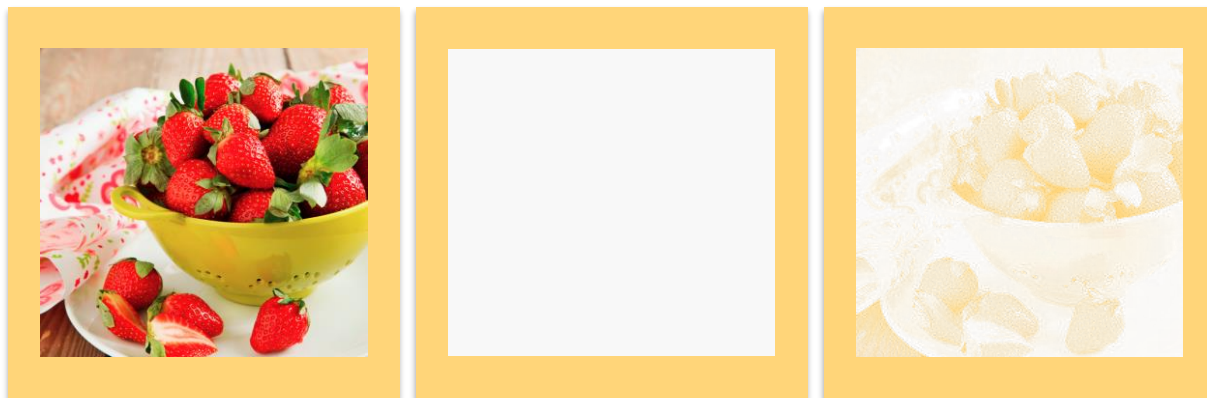
*Fiery Smart Estimator accessible from Command WorkStation*

### Smart white

The smart white feature works on Fiery servers driving print engines that carry white toner or ink.

White ink is usually necessary when printing on colored media. Applying white ink underneath translucent CMYK colorants blocks the colored surface to lighten the resulting color.

With the smart white feature, white toner/ink is used selectively, rather than as a flood fill. The feature calculates the lightness of the color being printed and, if necessary, it adds white ink to achieve the targeted lightness. White is added in any amount from 0 to 100% as determined by reading the white point L\* value in the output profile.



*Image on colored stock, white fill, and smart white fill*

Overall, smart white saves white ink/toner from being used where it is not needed.

The feature can be found in Command WorkStation Job Properties under the Specialty Color tab.

White ink/toner consumption can be previewed and verified by looking at the white ink/toner values in Fiery Smart Estimator (if supported) and Fiery ImageViewer.

The implementation of this feature may vary on different Fiery server models. For additional information, refer to your Fiery server documentation.

## ***Fiery Graphic Arts Package, Premium Edition/Fiery Productivity Package***

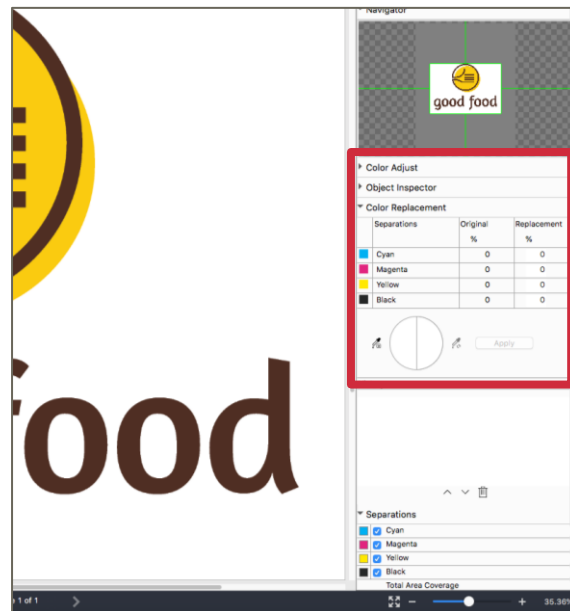
### ***Fiery ImageViewer new features***

The following new features are only applicable to Fiery servers driving full-color print engines.

#### ***Color replacement***

With ImageViewer color replacement, users can replace up to 5 specific color tints in an output raster. This enables users to perform late-stage color replacements without needing to go back to the original file or using the Substitute Colors feature in Fiery Spot-On™. With it, users can:

- Replace color on any object type (text, graphics, spot colors or solid colors). Color replacements are global and apply to any instance of the original color throughout the job.
- Enter specific CMYK, CMYK+ or grayscale replacement values (if known) or sample another tint in the raster to use as the replacement color – no need to know original color values.
- Re-order color replacements. As color replacements happen sequentially, users may desire changing the order of the replacements and have better control of how a color change may affect previous color replacements.
- Use it with CMYK, CMYK+, specialty colors (such as clear or white), and grayscale.



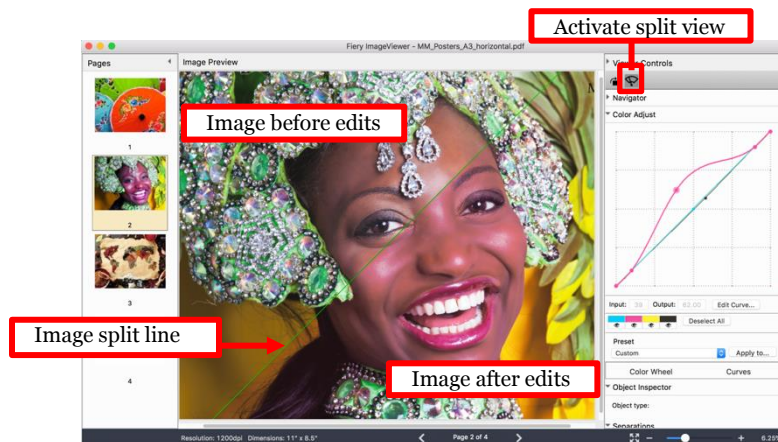
*Color replacement options in Fiery ImageViewer*



Color replacement example

### Split view

ImageViewer split view allows users to see color curve edits in a side-by-side, before-and-after view.



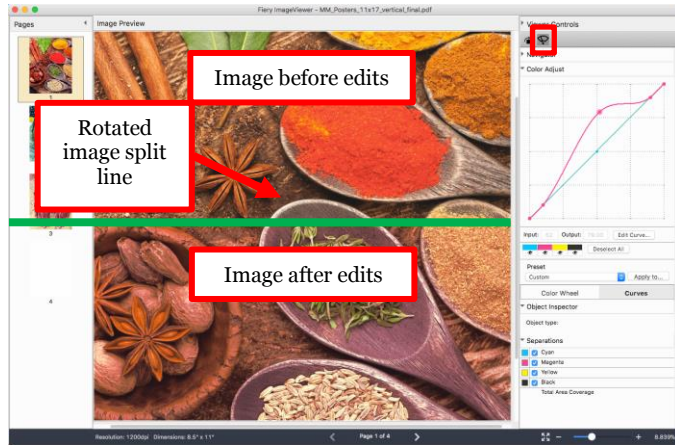
Split view in Fiery ImageViewer

Please note: Fiery ImageViewer 4.0 only works on systems with OpenGL version 3.2 and above with a minimum of 750 MB of memory available to the graphics card. Without these, the previous version of Fiery ImageViewer 3.0 will launch. Fiery ImageViewer 3.0 will launch if you try to log on remotely to the client computer running Fiery ImageViewer 4.0. Users can check the OpenGL version using third-party software, such as OpenGL extension viewer.



Users can also rotate the split view:

1. Activate the split view
2. Hold down Command and Option keys (macOS) or Control and Alt key (Windows), then scroll with your mouse wheel or two-finger swipe on a MacBook
3. The image split line will rotate around the page, enabling a side-by-side view of other areas on the page



*Rotation of split view line*

## Productivity

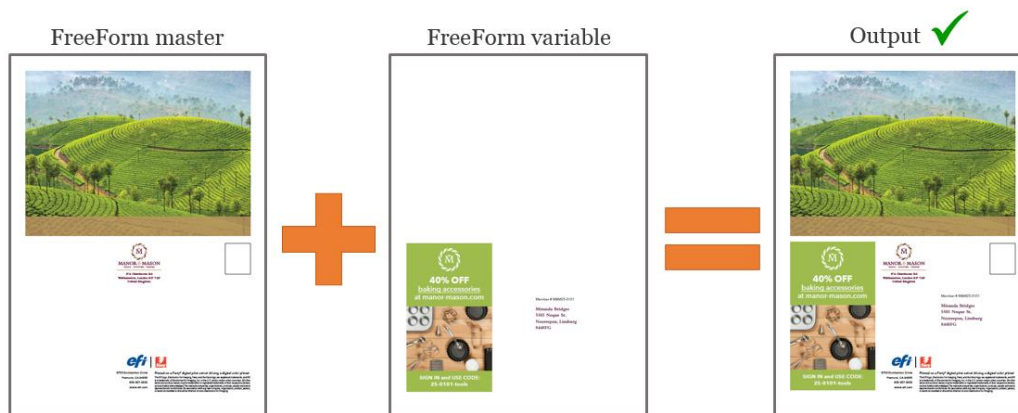
### HyperRIP support for record range

This feature expands the uses of HyperRIP by enabling its use in single-job mode when printing a range of records in a VDP job. This provides faster processing to both CPSI and APPE processing paths.

### Fiery FreeForm master on top

This feature provides the option of merging content from a FreeForm master on top of variable content during job processing, preventing the variable content from obscuring master content in some designs for personalized jobs.

Most common FreeForm uses expect the master content to be a background layer for the variable content. An example is the use of a FreeForm master file as a document letterhead, with the FreeForm variable file as the content of the letter. In this workflow, none of the variable elements overlap any of the master file elements, and the job prints as expected as shown below.



Personalized output looks correct regardless the order the master is processed

Some applications may have a FreeForm variable file with background elements such as a picture that would overlap and obscure the master data.



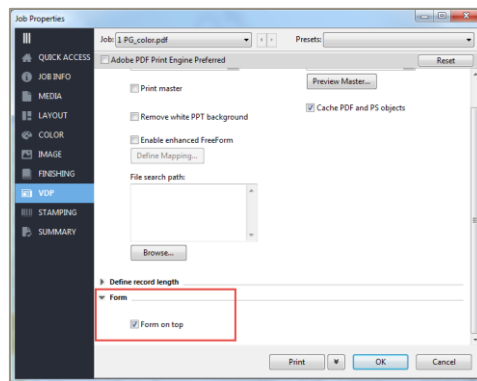
Variable content obscures the master content due to processing the master as a background layer

The FreeForm master on top feature gives users extended flexibility in the design for variable data applications. It is also useful when using specialty colors such as clear, white or neon.



Correct output using the FreeForm master on top feature

The setting is a check box that can be found inside the VDP tab in Job Properties.



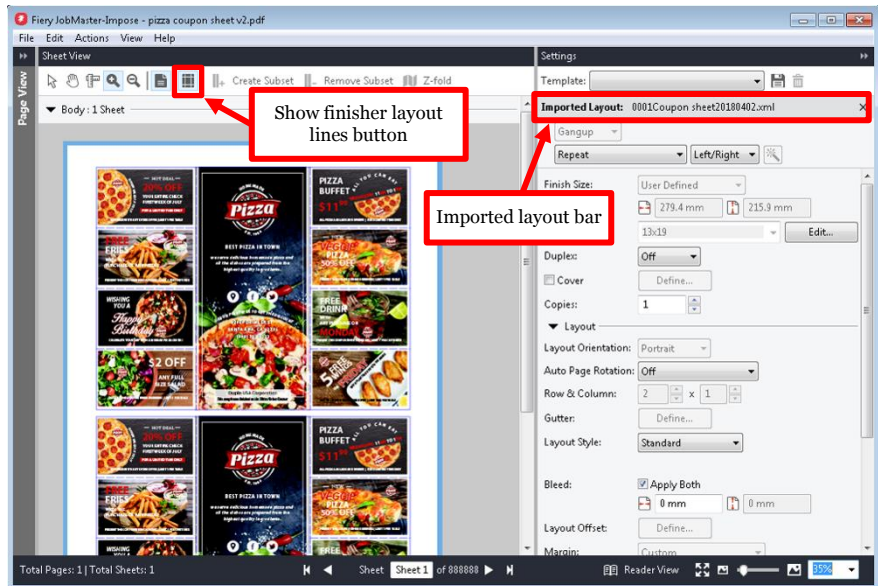
### Fiery Impose – Duplo finisher layout import

Fiery Impose has been introducing significant improvements to the integration between Fiery Impose and Duplo finishers since Fiery System 10 software. The improvements first introduced in Fiery Command WorkStation 6.2 bring increased automation of offline finishing for custom layouts. With this feature, users can import the layout file for the Duplo finisher into Fiery Impose to set up imposition in seconds and automate future jobs to eliminate manual setup on the Duplo finisher.

When users create the layout file on the Duplo finisher, they can import this file into Fiery Impose. This will automatically set up the imposition layout as defined by the Duplo layout file, which ensures a perfect match with the finisher's settings and minimizes user errors and rework.

While working on the layout in Impose, users have the option to apply additional Impose settings, such as duplex, that will affect only the settings that aren't grayed out. Settings that are grayed out, or not enabled, are ones controlled by the layout file and necessary to guarantee precise finishing by the Duplo finisher. For additional flexibility, Fiery Impose offers users the option to unlock those disabled features by closing the Imported Layout bar in the Settings panel.

When applying the Duplo layout file to a job with Fiery Impose, users can preview the alignment of the page content with finishing lines set up on the



*Duplo finisher layout import*

Duplo finisher, such as fold and perforation lines. Just click on the new "Show finisher layout lines" button on the toolbar.

Users can create a template to automate future jobs. These templates save all the layout settings and let users preview the finishing lines. Templates can then be used in all automation workflows including Fiery Hot Folders, Virtual Printers, server presets, and Fiery JobFlow™.

Before the first use, turn on the import feature for the Duplo finisher layout in the Fiery Impose Preferences section.

Supported Duplo finishers include the Duplo DC-646 / DC-746 Slitter/Cutter/Creaser.

Learn more about this feature by watching [this Express Video](#), following the easy set up procedures in [this how-to guide](#), or visiting [www.efi.com/impose](http://www.efi.com/impose).

## Management

### **Fiery Command WorkStation 6.3**

Fiery Command WorkStation 6.3 offers, among various other new features covered in this guide, a single shared interface for all Fiery Driven printers.

As print businesses expand to new print technologies and commercial opportunities, Command WorkStation 6.3 allows Fiery users to enjoy the same unified job management interface whether driving cutsheet, wide-or superwide-format, or high-speed inkjet printers from various manufacturers. A single shared interface for all Fiery Driven printers delivers production efficiencies such as:



- Reduced learning curves
  - Fiery Command WorkStation is an easy-to-learn interface for new users. It offers free online educational resources to start managing print production the first day.
  - Operators expanding their knowledge to operate different print technologies will need less time than if they have to learn a different print management application.
- Expands in-house expertise for operational flexibility and more productivity
  - Users only need to learn one interface, so they can more easily switch to other tasks in deadline situations, even if it's not their primary function.
  - Print production on multiple printers can be managed from virtually anywhere. Command WorkStation keeps users informed with live status updates on an engine's production status, minimizing walks to the printers.
- Reduced IT overhead and investment
  - Fiery Command WorkStation simplifies installation and setup procedures with a single application that works for both macOS and Windows client computers.
  - Fiery Software Manager groups all the installers to ensure all Fiery applications are accessible, and sends notifications of new releases to keep them up to date.

[Watch a video](#) to see a unified print room in action.

For additional information on new features, supported clients and Fiery servers visit [efi.com/cws](http://efi.com/cws).

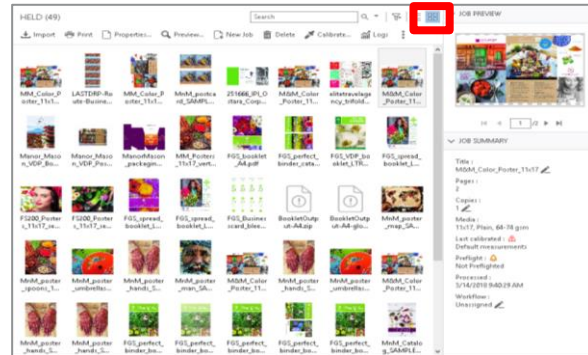
#### **Thumbnail view**

In addition to displaying jobs as a list in the Job Center, Fiery Command WorkStation offers a new way to display jobs within queues or views. The thumbnail view gives users the option to visually identify jobs by the first page preview.

Users can quickly toggle between the job list and the thumbnail view by clicking on the two new buttons on the upper right corner.

With the thumbnail view, users have a quick preview of the content of the job to find jobs faster. They can sort jobs by the same column category displayed in the list view, and see additional information such as complete file name, job status, user name, date, and time by hovering the mouse over the job.

Other available functions include selecting multiple jobs, and dragging and dropping files to other queues or Fiery servers.



Thumbnail view

The thumbnail view is the same as the Job Preview view of the first page of the job. This means that:

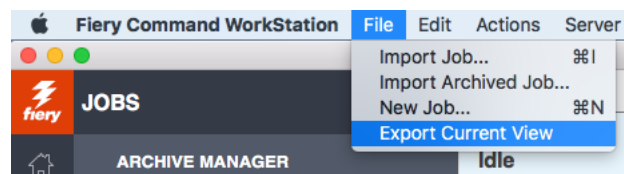
- All processed jobs display a preview.
- Spooled jobs display a preview on external Fiery servers running Fiery FS300 Pro and above.
  - You can see previews in spooled jobs for PS, PDF, TIFF, or EPS formats.
  - Other job formats that aren't supported by spooled Job Preview will display a generic thumbnail.
  - Changes in Job Properties are not reflected in the thumbnail preview. Examples are:
    - Imposed jobs don't display a sheet layout unless they are processed.
    - Color management changes only show in processed jobs.

### HiDPI monitor support

Fiery Command WorkStation fully supports HiDPI monitors, following the Microsoft Windows display scale and layout settings, so fonts and other items can be scaled at a different size to the overall display resolution.

### Export current view

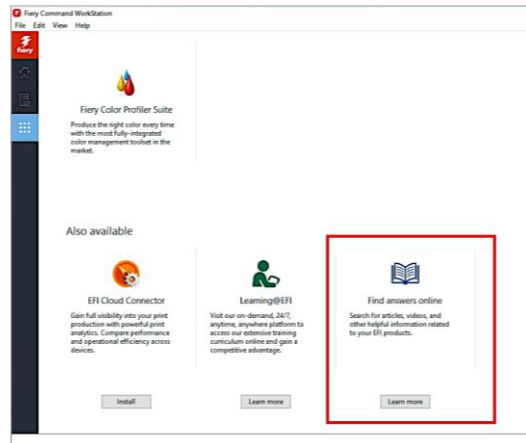
Users can export the information contained in their current Fiery Command WorkStation view to a text file. The view consists of whatever the user is viewing at that time; for example, the Printed queue or a saved search/filtered view, and all columns contained within. The text file can be imported into Microsoft Excel (or similar applications) for data analysis. The user can then import that information into their MIS or other accounting system.



The export current view feature is especially useful for products that support the Fiery Smart Estimator, as users can export cost or ink estimation data back into their appropriate software.

***In-software link to EFI Smart Support***

A link is now available from Apps and Resources within Fiery Command WorkStation to take users directly to EFI's online knowledge base. Thousands of self-help articles, videos, and other resources on EFI products are available and easy to locate with just a few clicks.



*Access to EFI Smart Support*

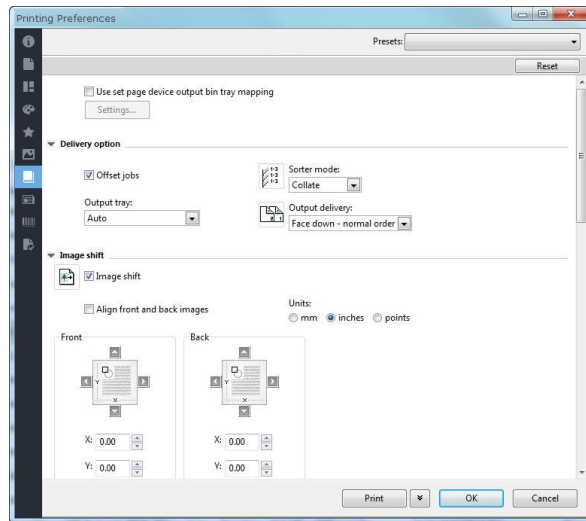
***Fiery driver 6.3***

The Fiery driver in Fiery FS350 Pro servers has been upgraded to version 6.3 that offers a highly improved user experience with a modern design that is consistent with Fiery Command WorkStation 6.

Print settings' sections are presented vertically with sidebar navigation tabs that take less space and expand the print settings area to minimize scrolling down to find settings.

Fiery driver 6.3 also complies with:

- EV Signature, Microsoft's more stringent code signing certificate requirement
- Command line installation that enables the use of enterprise deployment tools



*Fiery driver 6.3 modern design*

For Windows clients, users no longer need to access print properties to find the duplex or "Print of both sides" selection. The duplex setting can be found in the application's print dialog.

Fiery driver 6.3 fully supports HiDPI monitors, following the Microsoft Windows display scale and layout settings, so fonts and other items can be scaled at a different size to the overall display resolution.

Supported operating systems include Windows 7, 8.1, 10, Windows server 2008 R2 and higher and Mac 10.11 and higher.

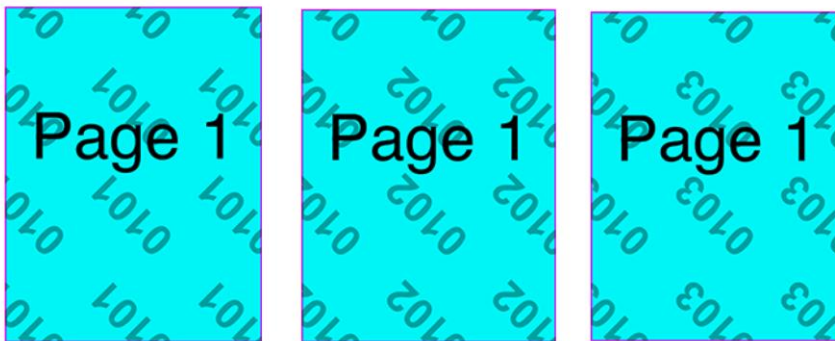
To download the latest Fiery drivers for your print engine visit [this web page](#).

## Copy numbering

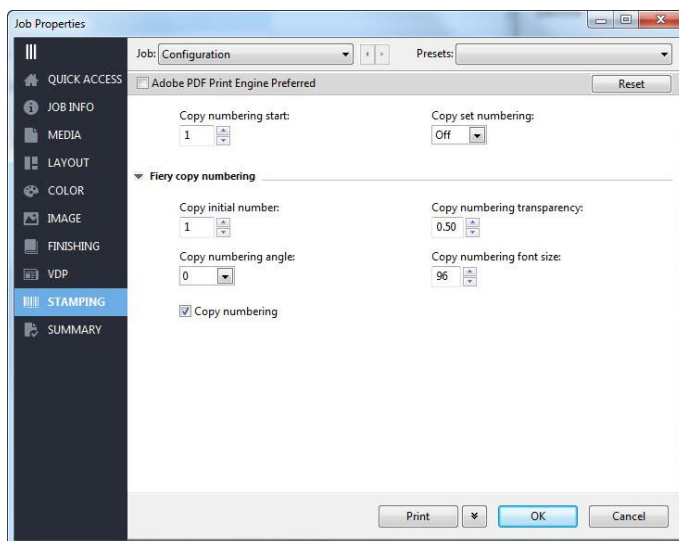
This feature provides the option of adding a simple copy number watermark that repeats over the pages of a job. It is useful for legal and government documents to provide identification, copy protection, and automatic consecutive numbering of pages.

The copy numbering feature is only available in external Fiery servers and is an entry-level version of the advanced numbering capabilities offered in Fiery JobMaster™.

Users can access the feature in Job Properties under the Stamping tab and save settings for future automated workflows using Fiery Hot Folders, job presets, and Fiery JobFlow™. Users can configure the angle, transparency, font size, and starting number of the watermark.



Three copies of a page with copy numbering:  
Start number: 101, font: 100 pt., transparency: 35%, angle: 135°



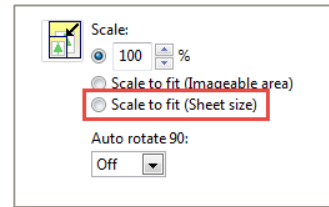
Copy numbering settings in Stamping tab



### Scale to fit sheet size

The Fiery driver and Job Properties include a setting to scale the page layout to fit the sheet size, in addition to the imageable area.

This new setting allows printing full bleed when supported by the printer or maximizes the printed surface when the design has white background.



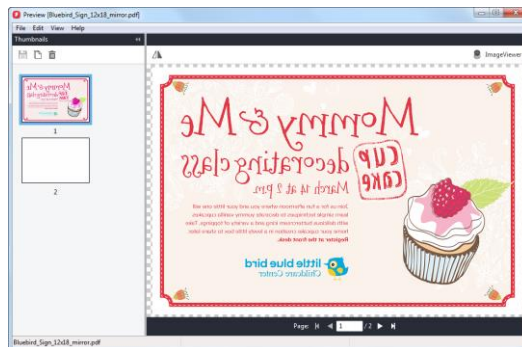
*Setting in job properties and Fiery driver*

### Raster preview from back

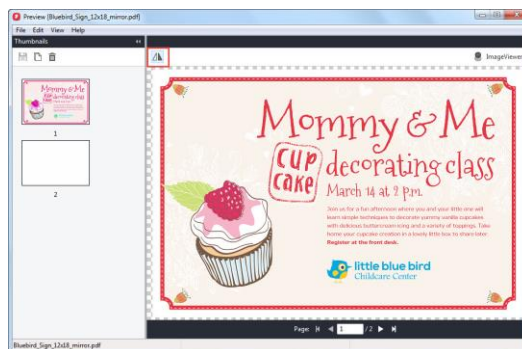
This feature is only available for printers that carry the white specialty color and is useful when printing on a transparent media. In some printing scenarios, the white toner lays on top of the CMYK elements, blocking the preview of the output. If the transparent media is placed on a window display, the resulting printout needs to be viewed from the back.

Raster preview from back provides users with a way to show a flopped preview when printed on a backlit media.

The feature is only applicable for some engines that are capable of printing white on CMYK. Check your Fiery sever documentation for the availability of this feature.



*Raster preview*



*Raster preview from back*

## New features in Fiery Impose

### Modify PS to PDF conversion option

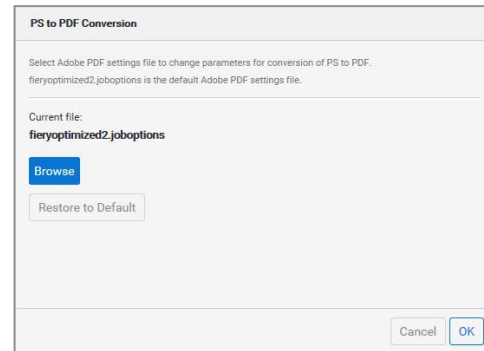
The PS to PDF conversion occurs every time a PostScript (PS) file requires the use of imposition functions in the print driver, Job Properties, or a server preset.

These imposition functions are found at the Layout tab in Job Properties and include booklet, gangup, and Impose settings.

The conversion of PS to PDF is defined by a jobOptions file created with Acrobat Distiller. A variety of settings control how the conversion occurs. The factory jobOptions file is "Fieryoptimized2" and users can see all settings using Acrobat Distiller.

In some specific scenarios, users may need to change some of the settings in Fieryoptimized2 to adapt the PDF conversion to their workflow needs. For example, a user could use a jobOptions file that ensures all pages print with black toner only, preventing a color click charges, or use a jobOptions file that reduces the file size, therefore speeding up the RIP time. Any setting that Distiller offers could potentially be set in a jobOptions file to help solve a specific workflow problem.

This new feature provides users with the flexibility to customize the Adobe Distiller jobOptions file by uploading the new file to the Job Management section in Fiery Configure.

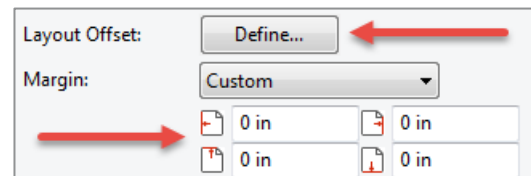


Select a different jobOptions file in Fiery Configure

### Automation for layout offset and margin settings

This feature enables users to save the layout offset and sheet margin settings in Fiery Impose to a template. With this template, they can then automate the offset using Fiery workflows through Fiery Hot Folders, virtual printers, server presets, and Fiery JobFlow.

For more information on the layout offset and margin settings features visit the [Fiery Command WorkStation 6.1 what's new document](#).



Layout offset and margin settings in Fiery Impose

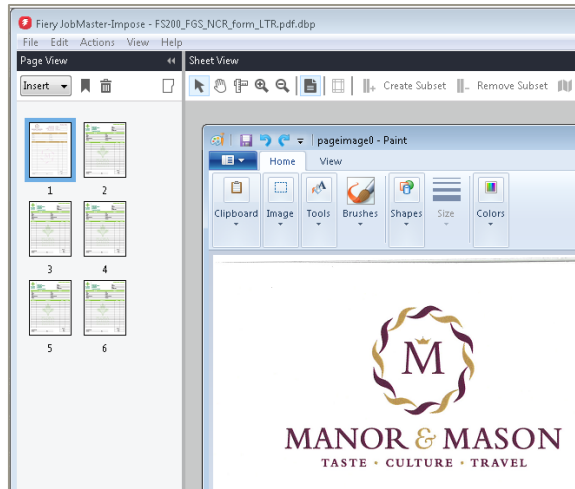
## New features in Fiery JobMaster

### Image editing

The image editing feature enables users to touch up scanned pages without leaving Fiery JobMaster. With it, users can open any third-party image editor installed on a client computer. This might include Microsoft Paint, GIMP, Adobe® Photoshop®, and Preview for macOS.

Then users can apply image-editing functions offered by user-preferred third party image editor. Commonly used image editing functions include adding content, deleting content, pasting or moving content on the page or between pages, and more.

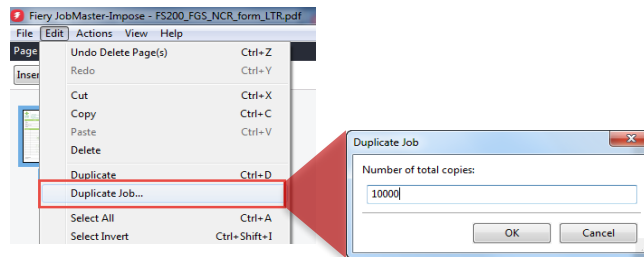
Once the user saves the edits and closes the image-editing application, the edits are instantly available to preview in Fiery JobMaster to make editing a seamless and error-free task.



*Image editing in Fiery JobMaster*

**Reduce file size for duplicate pages**

Fiery JobMaster significantly reduces the file size after assembling a job that requires page duplication. The improvement is clear when producing jobs such as tickets, coupons, forms, or postcards that require a large number of duplicate pages. Users will notice much faster times for saving and job RIPPING.



*Duplicate Job in Fiery JobMaster*

**Fiery Remote Scan updates**

The Fiery JobMaster version included with Fiery Command WorkStation 6.3 only supports 64-bit macOS and Windows operating systems. While previous versions of JobMaster supported the 32-bit TWAIN driver, this version of JobMaster no longer supports it. Most scanner manufacturers don't provide a 64-bit version of their TWAIN driver. Instead, they use the native OS scanning protocols, WIA for Windows computers and ICA for macOS computers. This version of JobMaster adds support for WIA and ICA drivers as well as support for the new Fiery Remote Scan plug-in released as part of Command WorkStation 6.3.

These protocol changes don't affect the scanning functionality offered by Fiery JobMaster.

## Connection

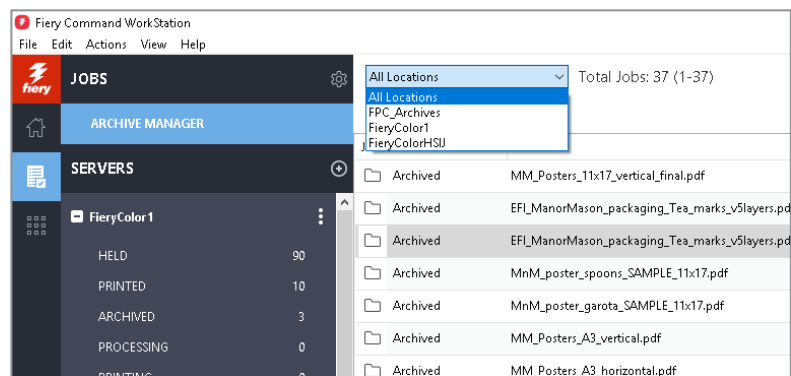
### Native 64-bit applications

Fiery Command WorkStation 6.3 and all related plug-ins are native 64-bit applications for both macOS and Windows platforms. Apple plans to terminate 32-bit support for the operating system release after macOS 10.14 (Mojave). Microsoft does not have immediate plans to retire their 32-bit support; however, the increasing popularity of Microsoft 64-bit operating systems due to benefits such as increased security, means that native 64-bit support is important to our Fiery users.

### Archive Manager

Fiery Command WorkStation 6.2 and above includes a new, simple, and safe storage solution for all Fiery jobs.

To start using the Archive Manager, users are guided through a simple process to migrate all currently archived jobs on a Fiery server, for all connected Fiery servers, to an independent location. Users with administrator rights can set up archive folders on the network, cloud, and external storage device, or their own computer.



*Archive manager job list*

Archive Manager offers a much more flexible solution for job storage:

- Job archives can follow the same IT backup procedures as any other digital asset
- Job archives can be easily shared across all connected Fiery servers
- Users can find archived jobs faster using the basic search function, and find jobs even when the Fiery server is disconnected, or is being upgraded or reloaded
- Users can list all archived jobs in one view where jobs can be previewed and searched

If users have archived jobs on the Fiery server, the migration process moves those files to the chosen location through the Archive Manager. This resolves previous issues such as:

- Losing archived jobs during Fiery software reload or upgrade processes
- Not being able to archive additional jobs after reaching 10,000 jobs per Fiery server in all queues
- Risk of locking up your Fiery server from lack of hard drive memory

Archive Manager is only available for cutsheet and high-speed inkjet engines.

For more details on Archive Manager, watch the [overview](#) and [migration](#) videos or visit the [Help documentation](#).

## **Fiery JDF 1.6**

Fiery JDF has been updated to version 1.6, adding the following new features:

### **Sequential Print Queue support**

The Sequential Print feature allows integrated upstream software to send jobs to the Fiery server sequentially so that jobs sent in a batch maintain an order of "first in, first out." The feature needs to be enabled first in Configure on the Fiery server.

### **Specify media for JDF banner page**

You can specify custom media for the Fiery JDF Banner Page. A banner page can be printed before a job, after a job, or before and after a job. The content of the banner page is printed based on the content URL of a PDF file specified in the JDF ticket (such as the location of MIS Crystal Reports) or can be automatically generated based on the job information. The behavior is the same as the Cover page feature in Job Properties.

### **APPE support at a job level**

This new feature allows integrated upstream software, such as MIS or a prepress workflow, to remotely turn on or off the Adobe PDF Print Engine Preferred setting in the Job Properties window at the job level.

### **Media level reporting**

The Media level reporting feature allows integrated upstream software to query the media level in each tray.

For more information on the new features visit the [Fiery JDF webpage](#).

## **Fiery Installer Builder**

The Fiery Installer Builder manages the download of a complete Fiery software and operating system image to reinstall software on the Fiery server using the USB port or a network installation. This feature is supported on embedded and black and white Fiery servers and eliminates the need for DVDs.

The Fiery Installer Builder downloads software from an EFI cloud location, and allows users to prepare a bootable USB flash drive to install the software on a Fiery server. Users can also install the image from their computer to a replacement Fiery hard disk drive using a USB to SATA adapter cable.

The image will include:

- Operating system
- Fiery software
- User software
- Any other Fiery software that is pre-installed for that particular Fiery configuration

The Fiery Installer Builder is a tool for analysts and service technicians of Fiery partners, who will find it [on the EFI Sales Portal](#). Login to Fiery Installer Builder requires valid EFI Sales Portal credentials.

For full instructions, see the [Fiery Installer Builder User Guide](#) and check the [Frequently Asked Questions](#) for more information.

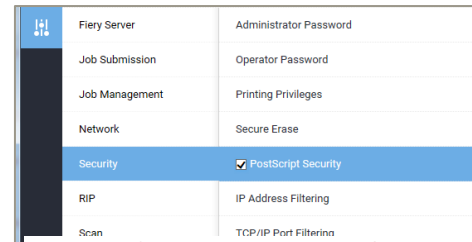
## Security updates

### PostScript Security

This feature prevents the Fiery server software from being modified through a malicious PostScript file.

PostScript Security is activated by default in Configure and can be disabled by administrators to allow downloading fonts with third-party font download applications.

PostScript Security doesn't affect processing and printing of PostScript files.



*Postscript Security check box in Configure*

### Disable SMBv1

The SMBv1 protocol is disabled on Fiery servers. This protocol has been declared obsolete by most popular software vendors, and its removal makes Fiery servers less vulnerable to malicious security attacks.

### SMB signing

Server Message Block (SMB) is the file protocol most commonly used by Windows. SMB signing is a feature through which communications using SMB can be digitally signed at the packet level. Digitally signing packets enables the packet recipient to confirm their point of origin and their authenticity. This security mechanism in the SMB protocol helps avoid issues like tampering of packets and "man-in-the-middle" attacks.

Fiery servers support SMB signing to enable all SMB communications to the Fiery server, and to protect Fiery SMB features such as PnP and SMB printing.

Find a copy of the Fiery FS350/350 Pro Security whitepaper on efi.com. (pending)

## Debian 8

Fiery embedded servers with Fiery FS350 system software run on Debian 8, one of the latest Linux-based operating systems. The update from Debian 7 to 8 offers the following enhancements:

- More secure system
- Better performance
- Upgrade to the latest tool chains
- Updated Linux kernel
- Latest OS-supported functionality such as file system

For detailed information on Debian 8 visit this [web page](#).

## Learning@EFI On-demand learning platform

At EFI, we are committed to fueling your success. [Learning@EFI](#) is the On-demand, 24/7 anytime, anywhere learning platform that helps you expand your staff's expertise on Fiery technology to take full advantage of your Fiery investment and make the most of your production capacity.

Whether you want to learn new skills or simply get credentialed for skills you already have, our learning options will enable you to master the latest Fiery features and functionality to give you a competitive advantage.



## Free training resources

Choose the EFI training resources that best fit your needs from a variety of free self-paced Web-based courses, videos or hands-on practical guides that make it easy to fit training into busy schedules.

- eLearning courses: interactive online learning sessions
- Simulation learning: learning solution that offers the opportunity to practice techniques and procedures in a realistic, immersive environment
- Express videos: short videos on key topics delivered by EFI subject-matter experts
- Webinars: access to recordings of World of Fiery Webinars, an on-going program of educational, and free webinars that feature valuable information for color professionals and for owners and managers of print businesses and in-plant/CRD operations.
- Podcasts: engaging audio shows on variety of topics
- How-to guides: step-by-step instructions with sample files

## Fiery certification programs

In today's fast-changing world, you need a convenient and affordable way to gain new skills and credentials quickly—so you can do more, be more, and take your career to the next level. Be a step ahead of the others. Our certification programs will help you stand out in your workplace or your business.

- Fiery Professional Certification

The Fiery Professional Certification teaches print professionals the necessary skills to optimize the performance of EFI technology solutions. Developed by EFI subject-matter experts, it provides the latest information on Fiery technology to develop employee skills, enhance professional development and transform print businesses.

- Fiery Expert Certification

The Fiery Expert Certification builds on the Fiery Professional Certification to develop more in-depth expertise. The expert courses help students master the advanced Fiery toolsets and learn to use the full range of features.

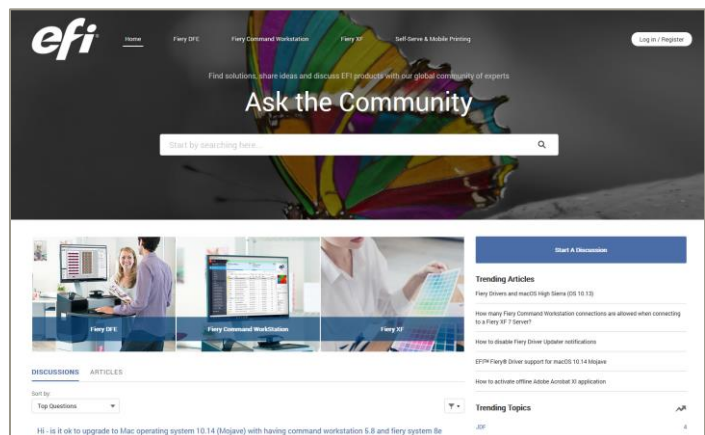
For more information on the Fiery certification programs and to enroll visit [this web page](#) on Learning@EFI.

## EFI Communities


EFI launched a new customer engagement platform, EFI Communities at [communities.efi.com](http://communities.efi.com) where Fiery users have a place to find solutions, share ideas and discuss EFI products with our global community of experts.

Everything you can do in Fiery Forums, you can now do in EFI Communities. In fact, EFI Communities also offers additional great features:

- A searchable knowledge base of technical articles created by the Fiery Technical Support team, for solutions to common or known issues



EFI Communities landing page

- 
- The ability to “follow” topics that interest you, or specific areas of focus
  - A personalized “feed” which is created dynamically based on your previous activities on the site
  - The ability to select the “best” answer from multiple provided solutions
  - New web design which is compatible with mobile devices

EFI Communities will eventually replace Fiery Forums, and we look forward to your interest and contribution. Fiery Forum usernames and passwords are not compatible with EFI Communities. Registration is quick and easy.



## Discontinued features

### Fiery Remote Scan TWAIN plug-in

The TWAIN communication protocol plug-in has been removed from Fiery Remote Scan which disables the ability to scan pages from 3rd party applications such as Adobe Acrobat or Adobe Photoshop.

The Fiery Remote Scan application remains fully supported to retrieve scan jobs and automatically synchronize scan mailboxes on supported Fiery servers with a client computer.

### Fiery Hot Folders filters

The following file formats are no longer supported for conversion by Hot Folders:

- Filters included in Fiery Graphic Arts Package, Premium Edition and Fiery Productivity Package:
  - o PDF2GO
  - o ExportPS
  - o CT-LW
  - o DCS 2.0
  - o TIFF-IT
  - o Conversion from PDF to PS output file types

### PrintMe cloud printing

EFI included a free cloud printing service, PrintMe on Fiery, on many Fiery servers since 2008. This service allows users to send a print job to the EFI PrintMe cloud service and retrieve the job for printing by entering a release code at the printer display panel. The service also includes the ability to automatically convert Microsoft Office documents to PDF. Total customer usage of this feature worldwide was extremely low and EFI will not be extending the free service to Fiery servers on FS350/FS350Pro.

Alternatively, EFI offers the PrintMe Web Release subscription service that runs on a client computer connected to a printer. More information on this product can be found at [EFI PrintMe Web Release](#).

## Additional resources

Use this list of sales, training, and technical resources to help you broaden your knowledge of Fiery print servers plus related products and applications.

|   |  |
|---|--|
| Fiery servers main page                                     | <a href="http://fiery.efi.com">fiery.efi.com</a>   |
| Fiery online resources                                      | <a href="http://resources.efi.com">resources.efi.com</a>                                   |
| Explore the Fiery digital front ends sold by Fiery partners | <a href="http://efi.com/fierydfe">efi.com/fierydfe</a>                                     |
| Fiery production solutions                                  | <a href="http://fiery.efi.com/production-solutions">fiery.efi.com/production-solutions</a> |
| Fiery Workflow Suite  | <a href="http://fiery.efi.com/fws">fiery.efi.com/fws</a>                                   |
| Fiery driver downloads                                      | <a href="http://efi.com/fierydrivers">efi.com/fierydrivers</a>                             |
| Fiery Command WorkStation main webpage                      | <a href="http://efi.com/cws">efi.com/cws</a>   |
| Fiery Command WorkStation download                          | <a href="http://fiery.efi.com/cws">fiery.efi.com/cws</a>                                   |
| Fiery software free trial request                           | <a href="http://fiery.efi.com/free-trials">fiery.efi.com/free-trials</a>                   |
| Training resources at Learning@EFI                          | <a href="http://learning.efi.com">learning.efi.com</a>                                     |
| EFI Communities   | <a href="http://communities.efi.com">communities.efi.com</a>                               |