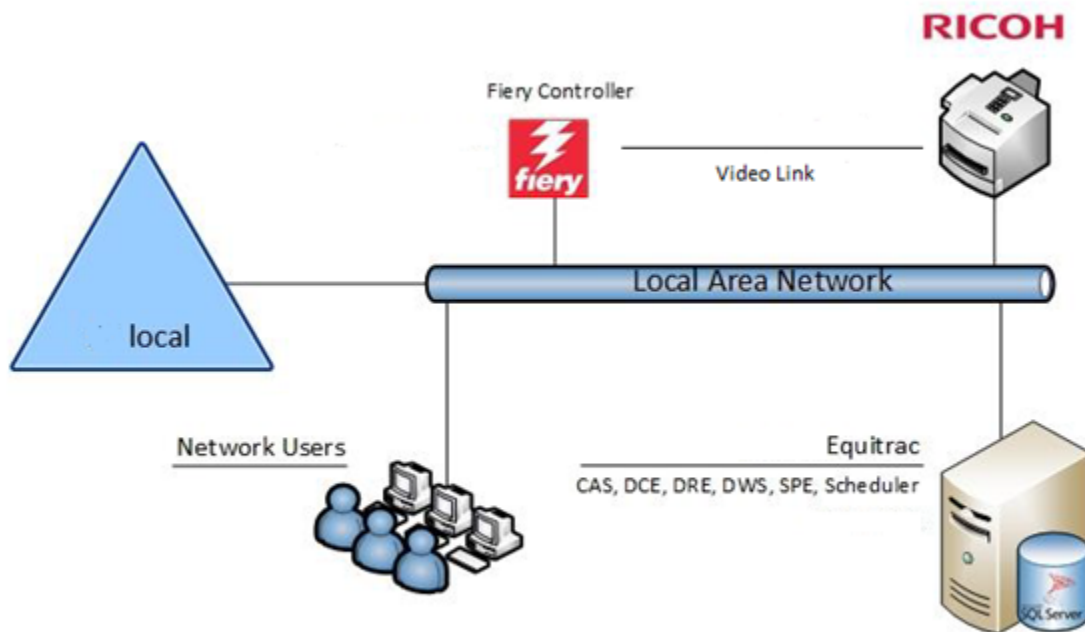


Network/hub configuration setup

Compatible servers: Fiery servers driving Ricoh printers

This guide was created for analysts and technicians setting up Equitrac with a Fiery Driven Ricoh MFP. Basic knowledge of Equitrac setup is recommended. The configuration is shown below.

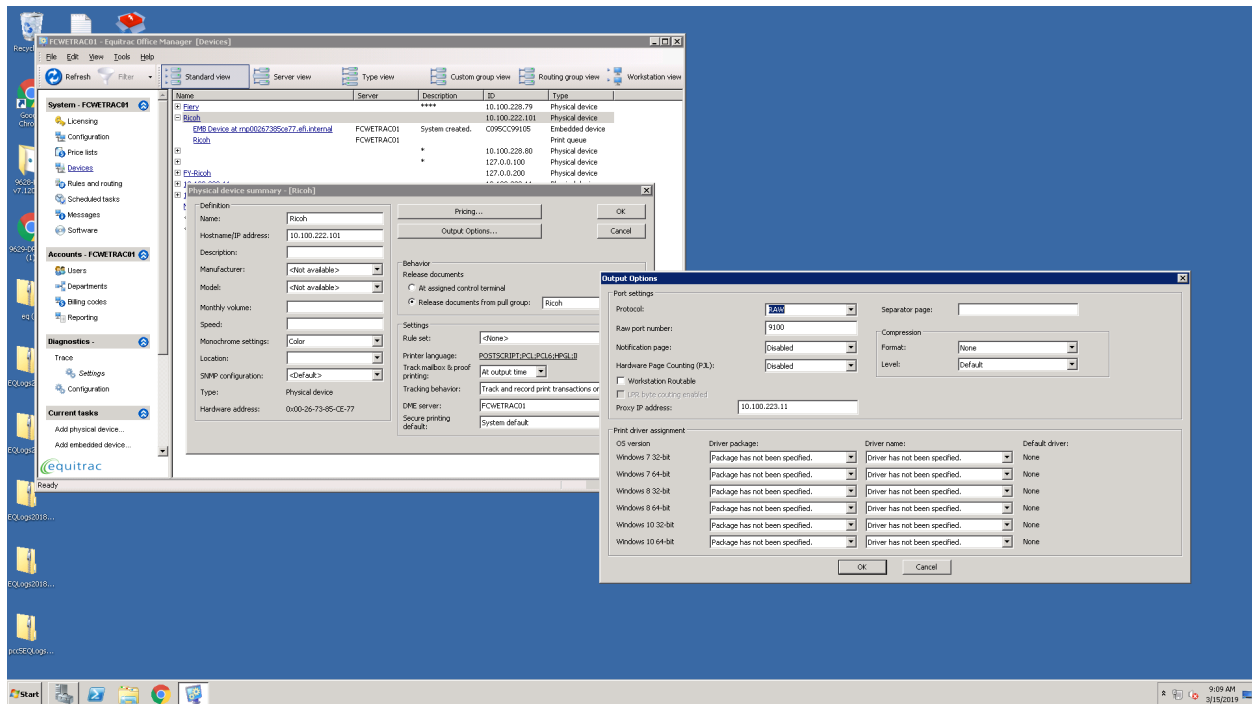


Installation

1. Follow Equitrac administrator guide to create the physical device and install the embedded client
2. Log into the Equitrac print server and create the following:
 - a. MFP print queue (non-Fiery)
 - b. Follow-You print queue and define the pull group
 - c. Fiery print queue
 - d. Fiery print driver is recommended for the above queues
3. Once the queues are created submit a print job and make sure queues shows up within the system manager
4. Secure the ports under Follow-You queue within the system manager

(Continued on Page 2)

5. At the physical device level of MFP, define the print proxy as such:
 - a. Click on the physical device
 - b. Click on the Output Options
 - c. In the field marked "Proxy IP address", populate the Fiery IP address



6. Upon loading the embedded client on the device, it will auto populate in system manager under the MFP IP
7. Now, perform the following steps:
 - a. Select the embedded device and configure it for secure release
 - b. Define the pull group at the physical device level of MFP
 - c. Define the pull group at the Fiery queue's physical device level
 - d. Confirm all devices are using the same pull group as the Follow-You queue
8. Submit a print job to the Ricoh print queue – verify print
9. Submit a print job to the Fiery print queue – verify print
10. Submit a print job to the Follow-You print queue
11. Walk up to the MFP and login
12. Upon a successful login select your submitted print job from Follow-You queue and release it