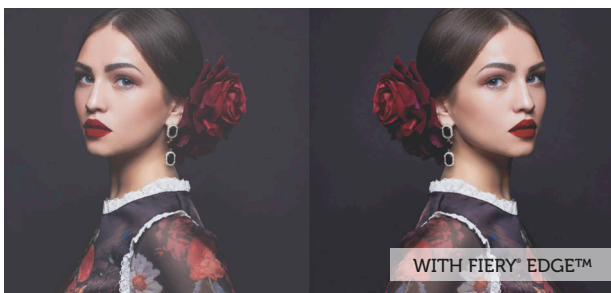


# Give your prints the Fiery Edge.

Whether you're seeking to produce smooth gradations, detailed and accurate results, colourful and vivid prints, to easily work with CMYK+ printers or all of the above — EFI's latest colour profiling technology will deliver the results you need to give your digital prints, products, and your company the competitive Fiery Edge they deserve.



EFI<sup>™</sup> Fiery<sup>®</sup> Edge colour profiling technology is at the heart of Fiery Color Profiler Suite\* — EFI's integrated colour management solution for Fiery Driven<sup>™</sup> printers and presses.

Fiery Edge technology delivers superior out-of-the-box colour and quality for Fiery-driven printers that have Fiery Edge profiles built in. Plus, it offers more user controls with Fiery Color Profiler Suite to get the very best from Fiery Edge compatible printers.

## ***Out-of-the-box results***

Built in Fiery Edge profiles deliver:

- Smoother colour transitions and blends
- Enhanced shadow detail in neutral and chromatic areas
- Better blacks for more dynamic range
- More image definition, depth, and clarity
- Superior rendering of RGB images containing blues and reds
- Support for up to 8 colour channels

## ***More user controls***

Custom Fiery Edge profiles\* provide control of:

- Colour saturation
- Gamut maximisation
- Shadow levels for maximum details
- Black introduction for smooth colour-to-black transitions
- Black point characteristics for maximum dynamic range and image depth

\*Requires Fiery Color Profiler Suite 5.3 or above

# Fiery Edge technology compatibility

FIERY DRIVEN PRINT TECHNOLOGY:	COMPATIBLE PRINTERS:	NOTES:
Cutsheet	Visit: <a href="http://fiery.efi.com/FieryEdgePrintersCS">fiery.efi.com/ FieryEdgePrintersCS</a>	Choose the printer brand then model to check Fiery Edge profile compatibility.
Wide and superwide	Visit: <a href="http://fiery.efi.com/FieryEdgePrintersWF">fiery.efi.com/ FieryEdgePrintersWF</a>	All EFI and non-EFI printers driven by Fiery proServer and Fiery XF are compatible with Fiery Edge profiles with the exception of RGB contone profiles.

## Learn more about Fiery Edge colour profiling technology

Visit the Fiery Edge landing page for more information on the benefits of this latest technology.



## EFI fuels success.

We develop breakthrough technologies for the manufacturing of signage, packaging, textiles, ceramic tiles, and personalised documents, with a wide range of printers, inks, digital front ends, and a comprehensive business and production workflow suite that transforms and streamlines the entire production process, increasing your competitiveness and boosting productivity. Visit [www.efi.com](http://www.efi.com) or call 0808 101 3484 (UK only) or +44 (0)1246 298000 (UK), or +61 (0) 7 3625 9200 (ANZ and Asia Pacific) for more information.



Nothing herein should be construed as a warranty in addition to the express warranty statement provided with EFI products and services.

The APPS logo, AutoCal, Auto-Count, Balance, BESTColor, BioVu, BioWare, ColorPASS, Colorproof, ColorWise, Command WorkStation, CopyNet, Cretachrom, Cretaprint, the Cretaprint logo, Cretaprinter, Cretaroller, Digital StoreFront, DocBuilder, DocBuilder Pro, DockNet, DocStream, DSFdesign Studio, Dynamic Wedge, EDOX, EFI, the EFI logo, Electronics For Imaging, Entrac, EPCount, EPPPhoto, EPRegister, EPStatus, Estimate, ExpressPay, FabriVU, Fast-4, Fiery, the Fiery logo, Fiery Driven, the Fiery Driven logo, Fiery JobFlow, Fiery JobMaster, Fiery Link, Fiery Navigator, Fiery Prints, the Fiery Prints logo, Fiery Spark, FreeForm, Hagen, Inkintensity, Inkware, LapNet, Logic, Metrix, MicroPress, MiniNet, Monarch, OneFlow, Pace, Pecas, Pecas Vision, PhotoXposure, PressVu, Printcafe, PrinterSite, PrintFlow, PrintMe, the PrintMe logo, PrintSmith, PrintSmith Site, PrintStream, Print to Win, Prograph, PSI, PSI Flexo, Radius, Remoteproof, RIPChips, RIP-While-Print, Screenproof, SendMe, Sincolor, Splash, Spot-On, TrackNet, UltraPress, UltraTex, UltraVu, UV Series 50, VisualCal, VUTEK, the VUTEK logo, and WebTools are trademarks of Electronics For Imaging, Inc. and/or its wholly owned subsidiaries in the U.S. and/or certain other countries.

All other terms and product names may be trademarks or registered trademarks of their respective owners, and are hereby acknowledged.