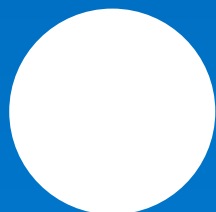




Fiery[®] JobExpert

Your built-in expert for optimal print output

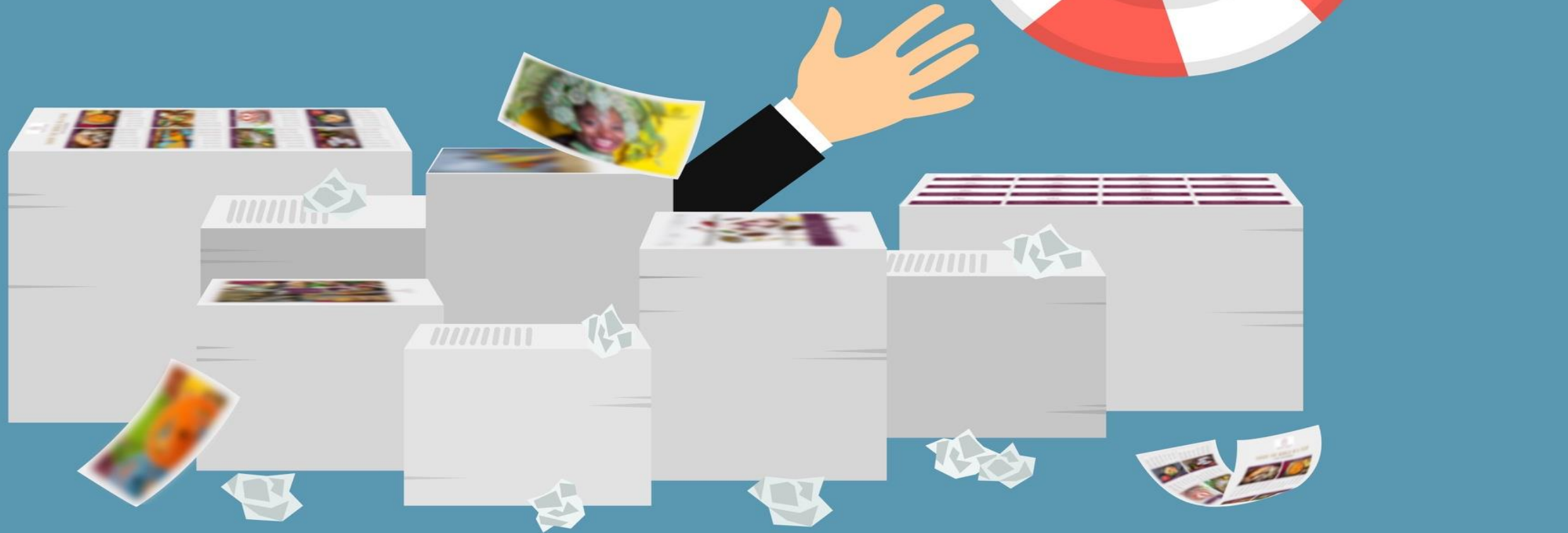
Available on new Fiery external servers with FS400 Pro software



Challenges operators face today



Fiery JobExpert comes to the rescue



What is Fiery JobExpert?



Your built-in expert for optimal print output

Fiery JobExpert is a **breakthrough new technology** that analyzes incoming PDF files and dynamically chooses the optimal print settings **to achieve the highest quality while optimizing production time.**

How does it work?

- Analyze each PDF print job in detail
- Automatically set the optimal Fiery Job Settings
- Efficiently process each job to achieve the best possible print quality



Benefits of using Fiery JobExpert

- Highest print quality
- Faster processing
- Enables less-experienced operators to run jobs correctly the first time
- Reduces setup time
- Cuts waste
- Undo if needed



Fiery JobExpert Report

See a summary of settings optimized for the job

The screenshot displays the Fiery Command WorkStation interface. On the left, the 'SERVERS' panel shows a list of servers and their status (HELD, PRINTED, ARCHIVED, PROCESSING, PRINTING, COMPLETED). The main window shows the 'Fiery JobExpert' report for the file 'efi_fiery_home_furniture_sale_poster_fg_en_uk.pdf'. The report lists several optimized settings:

- Image smoothing - On**: Applied to 16 instances. Image smoothing has been enabled to minimize jaggy output when printing low resolution images.
- Spot color matching - On**: Applied to 2 instances. Spot color matching has been enabled. The Fiery server uses a built-in table to generate the closest CMYK match to spot colors that the copier/printer can produce.
- Cache PDF and PS objects - On**: Applied to 25 instances. Cache PDF and PS objects have been enabled to process the job faster.
- Use RGB embedded profiles - On**: Applied to 16 instances. Objects with embedded RGB profiles have been found. Use RGB embedded profiles has been enabled to process objects correctly.
- Composite overprint - On**: Applied to 116 instances. Composite overprint has been enabled so objects set to overprint are processed correctly.
- Optimize RGB transparency - On**: Applied to 8 instances.

On the right, the 'JOB PREVIEW' section shows a warning icon and the text 'Preview not available!'. Below it, the 'JOB SUMMARY' section provides details about the job, including the title, pages, copies, media, last calibrated date, default measurements, preflight status, spooled date, job expert status, workflow, and spot colors.

Visualize job optimizations

Visualize elements that require specific settings to be enabled

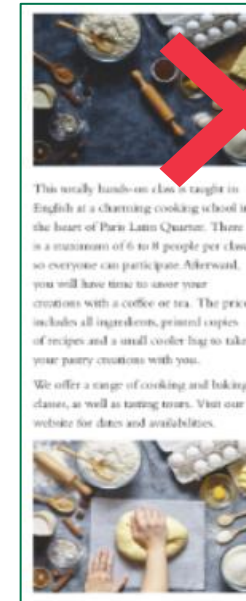




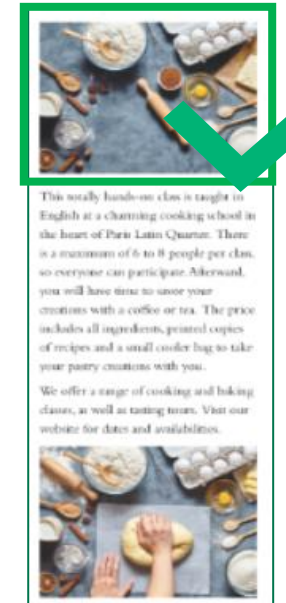
Examples

Honor embedded ICC profiles

- **Fiery JobExpert detects:**
 - Embedded ICC profiles and PDF Output Intent
- **Potential issue:**
 - Color shifts for elements with embedded profiles
- **Fiery JobExpert enables:**
 - The use of source RGB and CMYK embedded profiles



Without JobExpert



With JobExpert

Correctly print transparencies

- **Fiery JobExpert detects:**
 - Transparency objects or drop shadows
- **Potential issue:**
 - Transparent objects become opaque
- **Fiery JobExpert enables:**
 - APPE to ensure correct output

Without
JobExpert



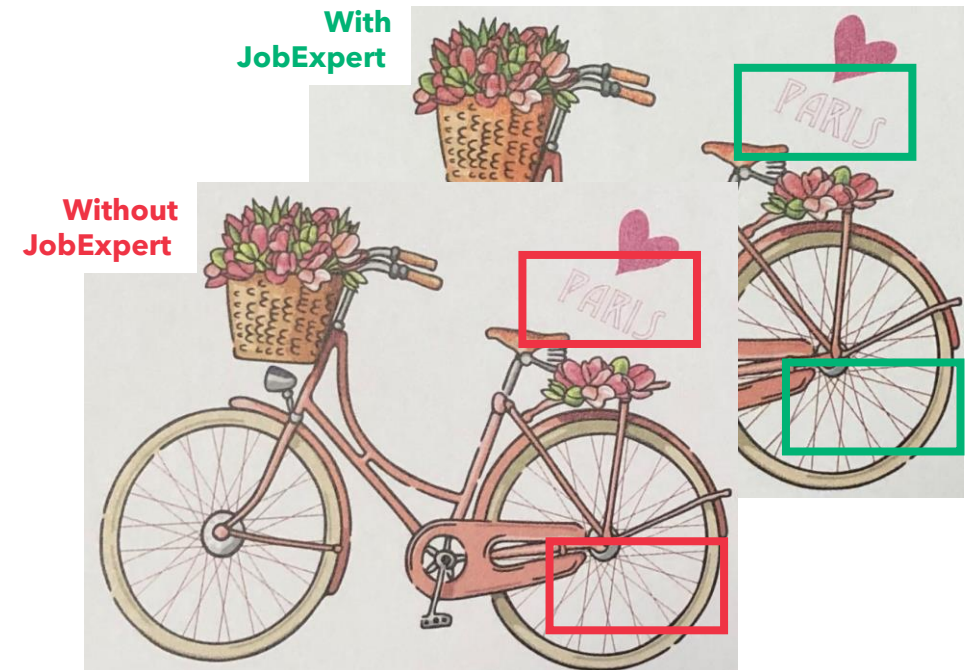
With JobExpert



Produce fluent ultra-thin lines



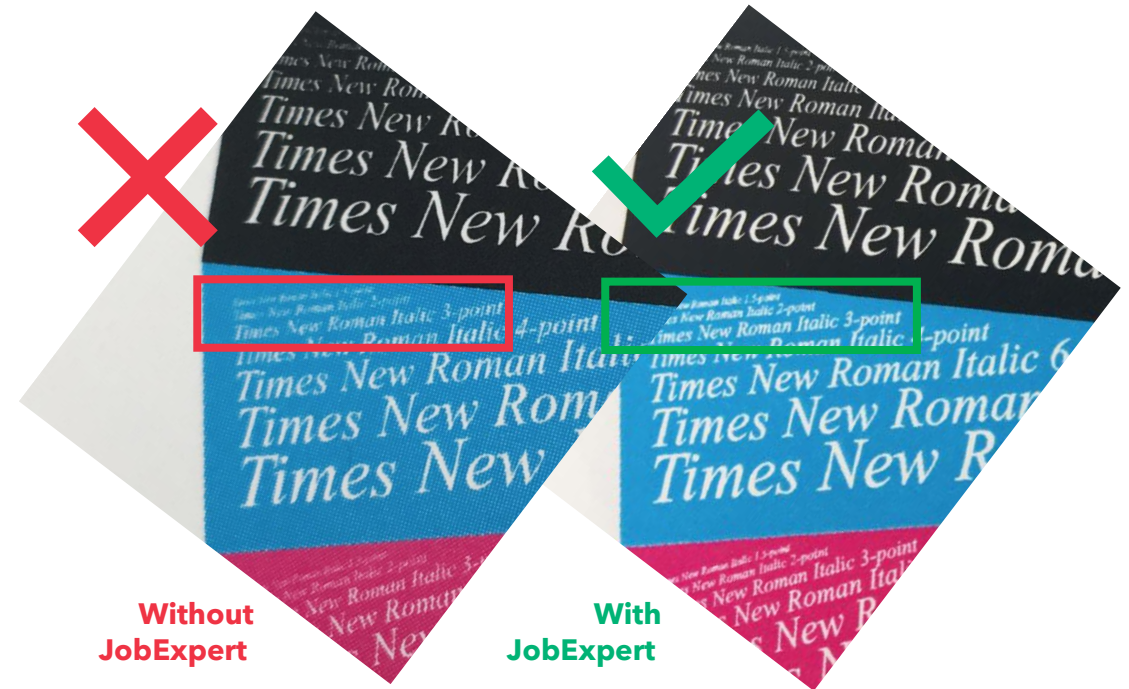
- **Fiery JobExpert detects:**
 - Ultra-thin lines
- **Potential issue:**
 - Distorted or interrupted fine lines
- **Fiery JobExpert enables:**
 - Image quality settings to ensure thin lines are printed without interruptions



Accurately reproduce small text



- **Fiery JobExpert detects:**
 - Very small text
- **Potential issue:**
 - Blurry edges and unreadable text
- **Fiery JobExpert enables:**
 - Dynamic HD Text and Graphics*





Resources

Fiery JobExpert resources

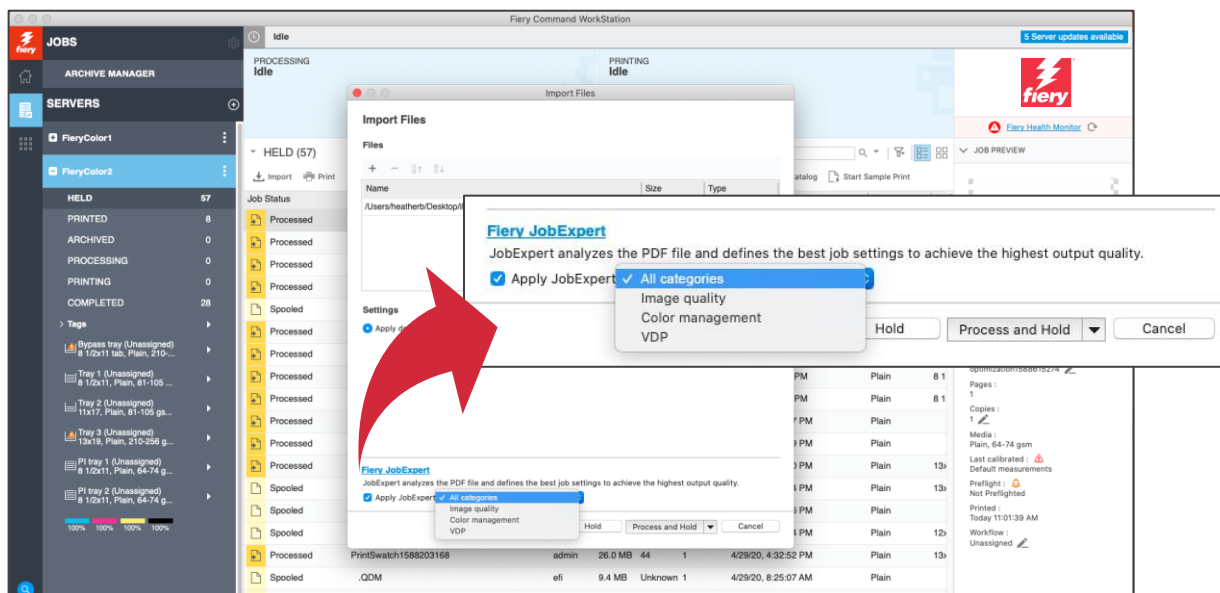
- [Fiery JobExpert web page](#)
 - [Overview video](#)
 - [How-to guide with sample](#)
 - [Express video](#)
- Included in Fiery FS400 Pro:
 - What's new overview presentation
 - What's new guide



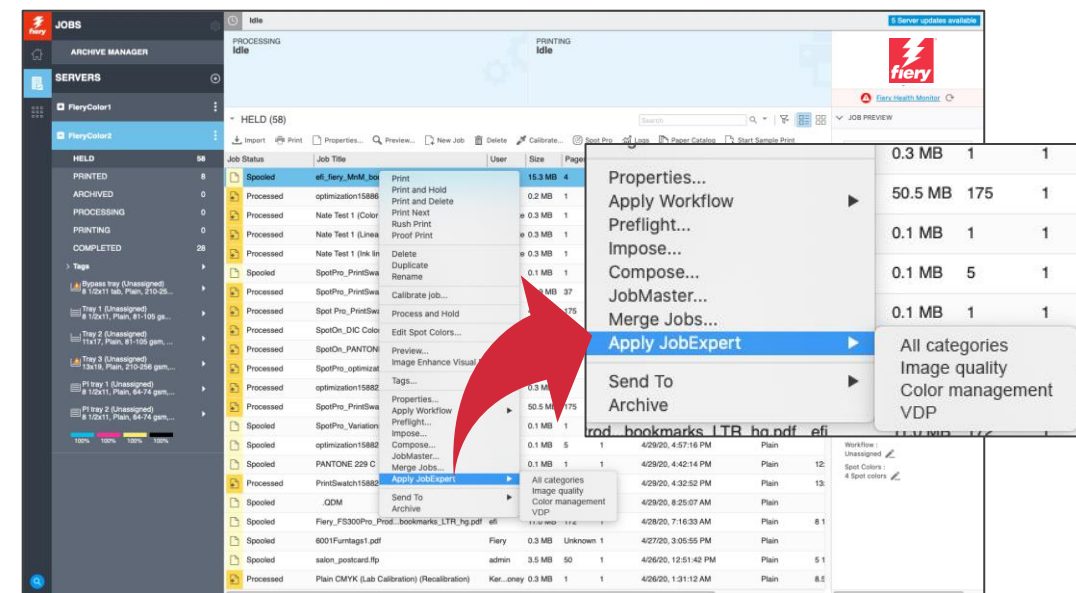


Enable Fiery JobExpert

Click “Apply JobExpert” and select a preset when importing a file



Or right-click on a job in the Held queue and select “Apply JobExpert”





see the difference