

Top reasons to buy the Xerox EX 280 Print Server v2.0

Because the investment horizon for a new digital printing system is from three to five years, it's always good to consider both current and future needs of your print environment when deciding on a new digital printing system. EFI™ offers two Fiery® server platforms for the Xerox® Versant® 280 Press— the external EX 280 Print Server v2.0 and embedded EX-i 280 Print Server v1.0. These two server platforms vary by the level of PDF processing controls, automation, productivity, workflow integration and expandability they offer.

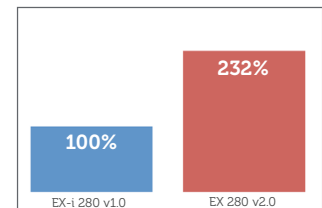
This document helps you understand the benefits of an external Fiery server, how it meets your current needs and how it offers built-in flexibility for future growth.

Xerox EX 280 Print Server v2.0: Standard features

The Xerox EX 280 Print Server comes with standard features that add productivity, quality and new services to your production environment. These features are not available on the Xerox EX-i 280 Print Server.

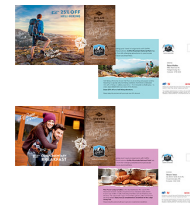
1. Faster turnaround times

To maximize your engine capacity, you need a high-powered digital front end to process and drive data fast enough to minimize engine idle time. More robust and powerful hardware specifications make the EX 280 Print Server v2.0 more than twice as fast compared to the EX-i 280 Print Server, making it the best choice for demanding production environments.



2. Supports all industry standard VDP formats

The robust, open, flexible, and scalable Fiery solution supports all leading VDP formats including PDF/VT, Creo® VPS®, PPML, and Xerox® VIPP® and works with all leading VDP composition software and formats for seamless workflows. The faster processing speed also makes offering VDP services more profitable.



3. Perfect PDF printing in a pure PDF workflow

The Xerox EX 280 Print Server v2.0 includes the latest Adobe® PDF Print Engine interpreter for end-to-end native PDF workflows. This allows consistency and flexibility from design to output in hybrid digital and offset print environments, and also ensures correct representation of color spaces and transparencies.



Xerox EX 280 Print Server v2.0: Standard features (continued)

4. Automated Web-to-Print submission, and integration with EFI MIS systems

The Xerox EX 280 Print Server is certified by CIP4 job definition format (JDF) IDP-ICS. By adhering to this standard, Fiery servers integrate seamlessly with EFI MIS and Web-to-Print systems as well as with industry-leading third-party prepress workflow solutions such as Agfa® Apogee, Kodak® Prinergy, Heidelberg® Prinect, SCREEN EQUIOS®, and Xerox® FreeFlow® Workflow Collection. This helps you more efficiently deliver job specifications, update job status in real time, track job costing data and validate equipment usage.



5. Inline tab insertions

Create and insert tab sheets directly into documents in [Fiery Command WorkStation®](#) by entering the text for each tab and specifying the location of the tab at the last possible stage in the print submission process.



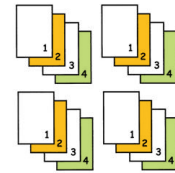
6. A way to offer pad printing

With the Xerox EX 280 Print Server, operators can print pads with ease from a single-page job, and with minimal manual collation of the printed output.



7. Integration with transactional printing workflows

The Xerox EX 280 Print Server can adapt to legacy transactional printing workflows with features such as Set Page Device to define media pulls and map the output destination, and Sequential Print to ensure the order of the final output is correct.



8. Microsoft Windows® 10 IoT Enterprise 2019 LTSC

The Xerox EX 280 Print Server uses the Windows 10 IoT Enterprise 2019 LTSC operating system. This Windows edition contains the latest security protections and includes the cumulative feature enhancements provided in Windows 10 versions 1703, 1709, 1803, and 1809.



9. On-the-fly image enhancement

[Fiery Image Enhance Visual Editor](#) enables quick, automatic adjustment of image colors in a job (including red-eye correction) without the need to open the file in the originating application.



10. Fiery QuickTouch™ software

The EX 280 Print Server features the new Fiery NX Pro hardware. The NX Pro includes [Fiery QuickTouch software](#) on the touchscreen display, which gives faster views of job status information and access to server management. With just a tap, the touchscreen display gives operators easy access to intuitive system installation, backup and restore, plus system diagnostics.



Xerox EX 280 Print Server v2.0: Standard features (continued)

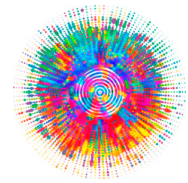
11. Fiery JobExpert

Reduce setup time and cut waste with Fiery JobExpert™ — a built-in feature in Fiery Command WorkStation® — that automatically analyzes each PDF print job in detail and sets the best Fiery job settings for color management, image quality, VDP settings, and engine specific properties.



12. Fiery Edge next-generation color profiling technology

Out of the box, [Fiery Edge™](#) output profiles deliver stunning color with the smoothest color blends, maximum shadow details, and superb image definition. Also, with additional user controls, Fiery Edge can produce more saturated, pleasing colors while maintaining gray balance and skin tones.



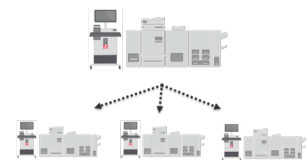
13. More powerful VDP with Fiery FreeForm Plus

Take advantage of the full power of [Fiery FreeForm™ Create](#) with the Xerox EX 280 Print Server v2.0. It's compatible with **Fiery FreeForm Plus, an exclusive proprietary VDP output format from FreeForm Create**. Now, users can choose their file submission method (such as dragging and dropping files into Command WorkStation or using Hot Folders), enjoy compatibility with Adobe PDF Print Engine, and reduce potential file mismatch errors.



14. Fiery deployable image

Service technicians can save time when installing multiple Windows-based Fiery servers in a single organization. The Fiery deployable image captures a distributable image of a fully configured Fiery server, including Fiery patches, Windows security updates, and user configurations



15. USB security

Maintain a secure print environment. Fiery external servers prevent connection of USB storage devices and disable Fiery features that require USB mass storage functionality, such as Backup and Restore.



Xerox EX 280 Print Server v2.0: Optional features

The Xerox EX 280 Print Server v2.0 offers optional software and hardware solutions that add advanced prepress, makeready, automation and color correction for high-production print facilities. These features are not available on the Xerox EX-i 280 Print Server v1.0.

1. Fiery Graphic Arts Pro Package

The Xerox EX 280 Print Server v2.0 offers the option to add [Fiery Graphic Arts Pro Package](#), a redesigned set of features to identify and correct print problems before they result in rejected jobs waste. With Fiery Graphic Arts Pro Package, users have access to a **powerful spot color management tool** (Fiery Spot Pro) as well as the **latest advancements** in Fiery ImageViewer.

Fiery Spot Pro

The most advanced tool for managing spot colors, [Fiery Spot Pro](#) ensures that brand colors are reproduced correctly, every time. With Fiery Spot Pro, users get powerful new capabilities, like the ability to create a spot color alias, import/export spot color libraries in Adobe Swatch Exchange, create more customized swatch books, edit spot colors in L*a*b, edit spot color tints, and more.

Fiery ImageViewer

With Fiery ImageViewer, the user has the ability to make more powerful late-state color edits right at the DFE. Choose to edit colors in a specific area of the page, including replacing specific color, or adjusting the color curves.



2. A powerful makeready option to produce differentiated output

Add [Fiery JobMaster](#) to offer advanced PDF makeready capabilities such as insertion of tab pages without the need to design them in the native application, multi-bank and bleed-edge tab setup, page merging, media assignment, finishing, page numbering, plus hard-copy scanning and cleanup. This allows you to produce jobs completely inline and reduce labor costs on manual tab insertion.



3. Accelerated production with prepress workflow automation

Add [Fiery JobFlow](#) for cost-effective, advanced prepress capabilities. You can easily configure automated job workflows including PDF conversion, preflight, correction and editing of PDF files, image enhancement, document imposition, plus approval and job ticketing.



4. Secure storage for print files

The optional removable hard disk drive allows you to lock the server drive into the system for normal operation and remove it to a secure location after powering down the server.



Xerox EX 280 Print Server v2.0: Performance Package

The Performance Package option for the EX 280 Print Server, a fully integrated combination of EFI and Xerox software and hardware, integrates powerful tools designed for professional production environments to achieve the highest color consistency and precision, streamline job preparation, and achieve maximum productivity.

Order all components listed on this page from Xerox to get the Performance Package feature set.

1. Fiery Color Profiler Suite with EFI ES-3000 spectrophotometer

Creates ICC profiles with a complete color management solution for more accurate color transformations and corrections. Users can perform color quality assurance and match color across multiple presses, as well as calibrate Fiery Driven™ print systems to G7. The ES-3000 accurately measures color patches for print-engine calibration and captures spot colors from a physical swatch for inclusion in a Fiery spot color library. Combined with Fiery Color Profiler Suite, it creates CMYK and RGB profiles for input and output devices. Learn more [here](#).



2. Fiery Compose

Provides an advanced preview and editing environment to simplify media assignments, tab printing, chapterization and document finishing. Learn more [here](#).



3. Fiery NX Station GL

A compact, centralized workstation for Fiery external servers. It features a 22" display, Fiery Ticker, work stand, and a wireless keyboard and mouse. Learn more [here](#).



4. Xerox options for automatic calibration

Xerox Interface Decurler Module (IDM/ILS) hardware includes All Stocks Rated Speed, X-Rite® Inline Spectrophotometer, and Xerox Automated Color Quality Suite software (ACQS) for automated calibration / profile creation to achieve accurate and predictable color with the minimum of time and labor.



Server comparison

Feature	External - Xerox EX 280 Print Server v2.0	Embedded - Xerox EX-i 280 Print Server v1.0
Fiery software	Fiery FS400 Pro	Fiery FS200
Fiery platform	NX Pro	E ³⁰⁰
CPU	Intel® Core™ i5-6500 Processor, up to 3.60 GHz with Turbo	Intel Celeron® Processor G1820, 2.7 GHz, Dual Core
Operating System	Windows 10 IoT Enterprise 2019 LTSC	Linux
RAM/Hard Disk Drive (HDD)	8 GB / 1 TB SATA	2 GB / 500 GB SATA
Removable HDD	OPTIONAL	Not Available
Removable Storage	DVD-RW/CD-RW	Not Available
VDP formats	PPML 2.0/2.2/3.0, PDF/VT-1, PDF/VT-2, VPS, Xerox VIPP, Fiery FreeForm™ Plus	Fiery FreeForm
Fiery FreeForm™ Create	INCLUDED	INCLUDED
Adobe® PDF Print Engine	INCLUDED	Not Available
Fiery JobExpert	INCLUDED	Not Available
Fiery Edge factory profiles	INCLUDED	Not Available
Fiery JDF	INCLUDED	Not Available
Integration to EFI MIS and Web-to-Print systems	INCLUDED	Not Available
Set Page Device, Sequential Print	INCLUDED	Not Available
PDF/X Output Intent	INCLUDED	Not Available
Pad Printing	INCLUDED	Not Available
Insert Tab	INCLUDED	Not Available
Fiery Deployable Image	INCLUDED	Not Available
USB security	INCLUDED	Not Available
Fiery auto-recovery	INCLUDED	Not Available
Fiery Graphic Arts Pro Package (includes Fiery Spot Pro, Fiery ImageViewer, Fiery Preflight, Fiery Postflight, and Fiery Control Bar Builder)	OPTIONAL*	Not Available
Fiery Image Enhance Visual Editor	INCLUDED	Not Available
Fiery Impose	INCLUDED	OPTIONAL*
Fiery Compose	OPTIONAL*	Not Available
Fiery JobMaster	OPTIONAL*	Not Available
Fiery JobFlow Base	INCLUDED	Not Available
Fiery JobFlow	OPTIONAL*	Not Available
Fiery NX Station GL	OPTIONAL	Not Available
Fiery Color Profiler Suite w/ES-3000 spectrophotometer	OPTIONAL	OPTIONAL
EFI IQ	Includes access to free cloud applications	Includes access to free cloud applications
Xerox hardware and software options		
Xerox Performance Package: Fiery Color Profiler Suite w/ES-3000, Fiery Compose, Fiery NX Station GL, Xerox ILS, Xerox ASRS, Xerox ACQS	OPTIONAL	Not Available
ASRS	OPTIONAL	OPTIONAL
For more information on all of the features, see the EX 280 and EX-i 280 datasheets on the Versant 280 engine page .		



EFI fuels success.

We develop breakthrough technologies for the manufacturing of signage, packaging, textiles, ceramic tiles, and personalized documents, with a wide range of printers, inks, digital front ends, and a comprehensive business and production workflow suite that transforms and streamlines the entire production process, increasing your competitiveness and boosting productivity. Visit www.efi.com or call 650-357-3500 for more information.



Nothing herein should be construed as a warranty in addition to the express warranty statement provided with EFI products and services.

AutoCal, Auto-Count, Best Eye, ColorGuard, ColorPASS, ColorRight, ColorWise, Command WorkStation, Cretachrom, Cretaprint, the Cretaprint logo, Cretaprinter, Cretaroller, Digital StoreFront, Distancing Graphics, Divisional Graphics, DocBuilder, Dynamic Wedge, EDOX, EFI, the EFI logo, Electronics For Imaging, EPCount, EPPhoto, EPRegister, EPStatus, Estimate, FabriVU, Fast-4, FASTRIP, FASTDRIVE, Fiery, the Fiery logo, Fiery Compose, Fiery Driven, the Fiery Driven logo, Fiery DesignPro, Fiery Edge, Fiery Impose, Fiery ImageViewer, Fiery Intensify, Fiery JobExpert, Fiery JobFlow, Fiery JobMaster, Fiery Navigator, Fiery Prints, the Fiery Prints logo, FreeForm, GameSys, Hagen, InkIntensity, Inkware, IQ, iQuote, LapNet, Lector, Logic, MarketDirect StoreFront, MarketDirect VDP, MarketDirect Cross Media, Metrics, Metrix, MicroPress, Monarch, Monarch Planner, OneFlow, Optima, Optitex, Organizing Print, Pace, Pecas, Pecas Vision, PC-Topp, PressVu, PrinterSite, PrintFlow, PrintMe, the PrintMe logo, PrintSmith, PrintSmith Site, PrintSmith Vision, PrintStream, Profile, Process Shipper, Prograph, ProGraphics, PSI, PSI Flexo, Radius, RIPChips, RIP-While-Print, SafeGuard Graphics, Spot-On, Spot Pro, Synchro 7, Technique, UltraDrop, UltraPress, UltraTex, UltraVu, UV Series 50, VisualCal, VUTEK, the VUTEK logo, and WebTools are trademarks or registered trademarks of Electronics For Imaging, Inc. and/or its wholly owned subsidiaries in the U.S. and/or certain other countries.

All other terms and product names may be trademarks or registered trademarks of their respective owners and are hereby acknowledged.