

# Top reasons to buy the Fiery IC-317

Because the investment horizon for a new digital printing system is from three to five years, it's always good to consider both current and future needs of your print environment when deciding on a new digital printing system.

EFI™ offers two Fiery® server platforms for the Konica Minolta AccurioPress C4080/C4070 — the external server Fiery IC-317 and the embedded server Fiery IC-419. These two server platforms vary in the level of PDF processing controls, automation, productivity, workflow integration, and expandability they offer.

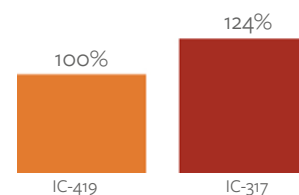
This document helps you understand the benefits of an external Fiery server, how it meets your current needs and how it offers built-in flexibility for future growth.

## Fiery IC-317 server only: Standard features

The Fiery IC-317 server comes with standard features that add productivity, quality, and new services to your production environment. These features are not available on the Fiery IC-419 server.

### 1. Faster turnaround times

To maximise your engine capacity, you need a high-powered digital front end to process and drive data fast enough to minimise engine idle time. More robust and powerful hardware specifications make the Fiery IC-317 server 24% faster rather than the Fiery IC-419 server, making it the best choice for production environments.



### 2. Flexible variable data printing services

The robust, open, flexible, and scalable variable data printing (VDP) solution supports all leading VDP formats including PDF-VT 1 and 2, VPS, and PPML; and works with all leading VDP composition software and formats for seamless workflows. The faster processing speed also makes offering VDP services more profitable.



## Fiery IC-317 server only: Standard features (continued)

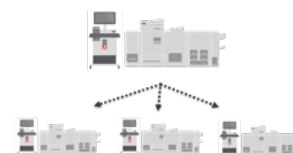
### 3. Fiery QuickTouch software

The Fiery IC-317 features the Fiery NX Pro hardware. The NX Pro includes [Fiery QuickTouch™](#) software on the touchscreen display, which gives faster views of job status information and access to server management. With just a tap, the touchscreen display gives operators easy access to intuitive system installation, backup and restore, plus system diagnostics.



### 4. Fiery deployable image

Service technicians can save time when installing multiple Windows-based Fiery servers in a single organisation. The Fiery deployable image captures a distributable image of a fully configured Fiery server, including Fiery patches, Windows security updates, and user configurations.



### 5. Microsoft Windows 10 IoT Enterprise 2019 LTSC

Fiery FS500 Pro external servers use Microsoft Windows® 10 IoT Enterprise 2019 LTSC as their operating system. This Windows edition contains the latest security protections and includes the cumulative feature enhancements provided in Windows 10 versions 1703, 1709, 1803, and 1809.



### 6. USB security

Maintain a secure print environment. Fiery external servers prevent connection of USB storage devices by disabling Fiery features that require USB mass storage functions, such as backup and restore.



## Fiery IC-317 server only: Optional features

The Fiery IC-317 server offers optional software and hardware solutions that add advanced prepress, makeready, automation, and workflow integration for high-production print facilities. These features are not available on the Fiery IC-419 server.

### 1. Secure storage for print files

The optional Fiery disk drive security kits allow you to lock the server drive into the system for normal operation and remove it to a secure location after powering down the server.



### 2. A centralised production workspace for operators

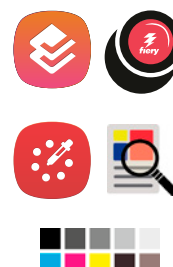
The Fiery NX Station is a compact, centralised workstation for Fiery external servers that adapts to different print production environments. It comes in two models: NX Station GL, which features a 22" display, or the NX Station LS, which features a 27" display, 6" adjustable-height workspace, proximity sensor, and cable routing.



### 3. Operators need the ability to make late-stage edits and corrections to files

In demanding print environments, operators need to be able to easily perform late-stage edits to adjust colours, impose documents into booklets, and preview full raster files. This ensures the highest quality when printing, for minimal waste and rework.

The Fiery Graphic Arts Pro Package, a powerful toolset, lets you identify and correct production problems before printing a single page. This eliminates wasted prints and keeps print engines producing profitably.



## Fiery IC-419 server: Optional features

While these features are standard on Fiery IC-317 server, you may add them as options to the Fiery IC-419 server by purchasing the Fiery ColorRight Package, Fiery Automation Package, or standalone software options. Be sure to compare the cost of the Fiery IC-419 server with the additional software added for a more accurate comparison to the Fiery IC-317 server.

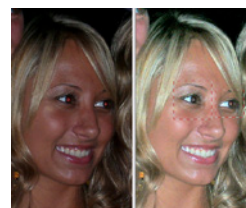
### 1. Automated Web-to-Print submission, and integration with EFI MIS systems

Fiery servers are certified by CIP4 as fully compliant with the job definition format (JDF) IDP-ICS. By adhering to this standard, Fiery servers integrate seamlessly with leading MIS and Web-to-Print systems as well as with industry-leading third-party prepress workflow solutions such as Agfa® APOGEE™, Kodak® Prinergy®, Heidelberg® Prinect®, and SCREEN Equios. This helps you more efficiently deliver job specifications, update job status in real time, track job costing data, and validate equipment usage.



### 2. Superior photographic prints

Fiery Image Enhance Visual Editor, a Fiery Command WorkStation® plug-in, allows operators to make last-minute edits to a selected image without having to open the image in applications such as Adobe® Photoshop®.



### 3. Automated job submission that eliminates touch points

Automate job-submission workflows with Fiery Hot Folders and Virtual Printers to reduce errors and save time. This also allows operators to give more attention to other jobs that require specific finishing and colour settings.



### 4. Accelerated production with prepress workflow automation

Add the free Fiery JobFlow™ Base on an embedded Fiery server with Fiery Automation Package and start building ready-to-use workflows. Once Fiery JobFlow Base is enabled, upgrade to a paid license for the full version, Fiery JobFlow, for advanced prepress capabilities. You can easily configure automated job workflows including correction and editing of PDF files, plus approval, scripting, and job ticketing.



### 5. Reduce waste by catching potential file errors before printing

Fiery Preflight checks jobs for problems before they are printed. It identifies potential errors like lo-res images or overprint and checks for missing elements, like spot colours, before they result in rejected prints that must be reprinted. Fiery Preflight can be automated through a Fiery Hot Folder workflow or with Fiery JobFlow.



## Key comparative features

Fiery Server	External - Fiery IC-317 v2	Embedded - Fiery IC-419 v2
<b>Fiery software</b>	Fiery FS500 Pro	Fiery FS500
<b>Fiery platform</b>	NX Pro Gen III	E500
<b>CPU</b>	Intel® Core™ i5-8500 processor	Intel® Pentium® G5400 processor
<b>Operating system</b>	Microsoft Windows 10 IoT Enterprise 2019 LTSC	Linux
<b>RAM</b>	8 GB	8 GB
<b>Disk drive(s)</b>	SSD boot drive for OS and Fiery software + 1 TB HD SATA	500 GB SATA
<b>Fiery disk drive security kit</b>	OPTIONAL	Not Available
<b>VDP formats</b>	PPML 2.0/2.2/3.0, PDF/VT-1, PDF/VT-2, VPS, Fiery FreeForm™ Plus	PDF/VT-1, Fiery FreeForm Plus
<b>FreeForm Create</b>	INCLUDED	INCLUDED
<b>Fiery JobExpert™</b>	INCLUDED	INCLUDED
<b>Fiery Spot-On™</b>	INCLUDED	INCLUDED
<b>Adobe® PDF Print Engine***</b>	INCLUDED	INCLUDED
<b>PDF/X Output Intent</b>	INCLUDED	INCLUDED
<b>Pad printing</b>	INCLUDED	INCLUDED
<b>Fiery Hot Folders/Virtual Printers</b>	INCLUDED	OPTIONAL with Fiery Automation Package*
<b>Integration to MIS and Web-to-Print systems</b>	INCLUDED	OPTIONAL with Fiery Automation Package*
<b>Fiery Image Enhance Visual Editor</b>	INCLUDED	OPTIONAL with Fiery ColorRight Package*
<b>Fiery JDF</b>	INCLUDED	OPTIONAL with Fiery Automation Package*
<b>Fiery ImageViewer, Fiery Spot Pro, Fiery Postflight, Fiery Control Bar</b>	OPTIONAL with Fiery Graphic Arts Pro Package*	OPTIONAL with Fiery ColorRight Package*
<b>Fiery Preflight</b>	INCLUDED	OPTIONAL with Fiery Automation Package*
<b>Fiery Preflight Pro</b>	OPTIONAL with Fiery Graphic Arts Pro Package*	Not Available
<b>Fiery JobFlow Base</b>	INCLUDED	INCLUDED (requires Fiery Automation Package*)
<b>Fiery JobFlow*</b>	OPTIONAL	OPTIONAL (requires Fiery Automation Package*)
<b>Fiery Impose*</b>	OPTIONAL	OPTIONAL
<b>Fiery Compose*</b>	OPTIONAL	OPTIONAL
<b>Fiery JobMaster*</b>	OPTIONAL	OPTIONAL
<b>EFI ColorGuard</b>	INCLUDED (3-year license)	INCLUDED (1-year license)
<b>EFI Manage</b>	OPTIONAL	OPTIONAL
<b>Fiery Color Profiler Suite** with ES-3000 spectrophotometer</b>	OPTIONAL	OPTIONAL
<b>Fiery NX Station (GL and LS)</b>	OPTIONAL	Not Available

Visit the [Fiery Graphic Arts Pro Package](#), [Fiery ColorRight Package](#) and [Fiery Automation Package](#) web pages for more information on features included in each package.

\* Free 30-day trial available at [efi.com](http://efi.com)

\*\* Free trial in demo mode available

\*\*\* Updated with enhancements and service releases on an ongoing basis

We develop breakthrough technologies for the manufacturing of signage, packaging, textiles, ceramic tiles, building materials and personalised documents, with a wide range of printers, inks, digital front ends, and a comprehensive business and production workflow suite that transforms and streamlines the entire production process, increasing your competitiveness and boosting productivity. Visit [www.efi.com](http://www.efi.com) or call 0808 101 3484 (UK only) or +44 (0)1246 298000 for more information.



Nothing herein should be construed as a warranty in addition to the express warranty statement provided with EFI products and services.

AutoCal, Best Eye, ColorGuard, ColorPASS, ColorRight, ColorWise, Command WorkStation, Cretachrom, Cretaprint, the Cretaprint logo, Cretaprinter, Cretaroller, Divisional Graphics, Distancing Graphics, DocBuilder, Dynamic Wedge, EDOX, EFI, the EFI logo, Electronics For Imaging, FabriVU, Fast-4, FASTRIP, FASTDRIVE, Fiery, the Fiery logo, Fiery Compose, Fiery Driven, the Fiery Driven logo, , Fiery Edge, Fiery Essential, Fiery HyperRIP, Fiery Impose, Fiery Impress, Fiery ImageViewer, Fiery Intensify, Fiery JobExpert, Fiery JobFlow, Fiery JobMaster, Fiery Navigator, Fiery Prep-it, Fiery Prints, the Fiery Prints logo, Fiery TrueBrand, FreeForm, InkIntensity, Inkware, IQ, MicroPress, OneFlow, PressVu, PrintMe, the PrintMe logo, Prograph, ProGraphics, RIPChips, RIP-While-Print, SafeGuard Graphics, Spot-On, Spot Pro, UltraDrop, UltraPress, UltraTex, UltraVu, UV Series 50, VUTEK, the VUTEK logo, and WebTools are trademarks or registered trademarks of Electronics For Imaging, Inc. and/or its wholly owned subsidiaries in the U.S. and/or certain other countries.

All other terms and product names may be trademarks or registered trademarks of their respective owners and are hereby acknowledged.