

# FIERY® GRAPHIC ARTS PRO PACKAGE

Fiery FS500 Pro and newer servers



Reduce the cost of  
producing print

# Are your profits going in the trash?

## Do these scenarios sound familiar?

- Holding up production to return a job to prepress for a fix
- Wasting clicks trying to determine color correctness
- Preflight software that doesn't catch all potential issues
- Jobs rejected for color or quality issues
- Press time wasted for print quality troubleshooting
- Time-consuming preparation of client soft proofs



Turnaround times are always tight, and margins are narrow. Rework essentially eliminates any profit from the job. So what tools do you need to eliminate wasted prints and maximize shop profitability?

### Stop wasting clicks

Eliminate wasted prints and keep your print engines producing profitably with Fiery® Graphic Arts Pro Package. View your print jobs exactly as they will print, right at the Fiery server, without printing a single page — allowing you to proactively fix issues before more profits end up in the recycle bin.

### How does waste affect your workflow?

Waste is more than just physical prints. Inefficient processes lead to wasted employee time, and wasted time means fewer employee hours available for profit-generating production tasks. Some of the most common reasons for waste can be caught and fixed by Fiery Graphic Arts Pro Package, having the potential to decrease cost and increase profit<sup>1</sup>.

Rejected jobs are a major source of waste. About 25%<sup>1</sup> of print service providers experience spoilage from a lack of preflight checks. Fiery Graphic Arts Pro Package enables key preflight checks, reducing waste and eliminating job rejections due to preventable errors.

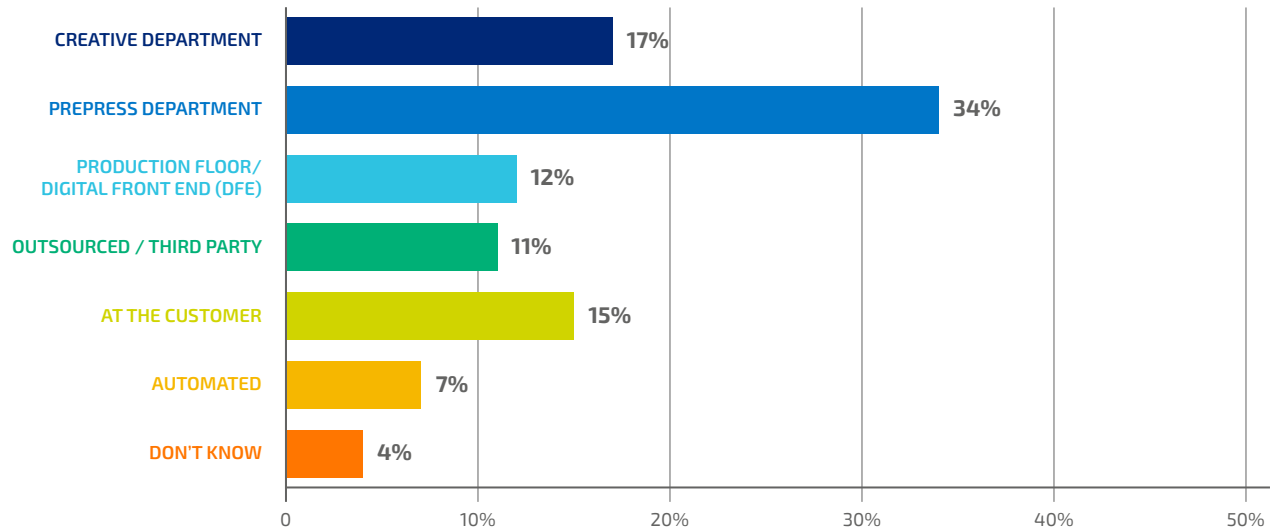
Another way to eliminate wasted prints is to provide clients an accurate soft proof. Approximately 50%<sup>1</sup> of all print volume consists of jobs that require a soft proof to the customer for content or color approval, with the majority of print service providers taking five minutes to create a soft proof<sup>1</sup>. With Fiery Graphic Arts Pro Package, you can easily generate a color-accurate soft proof from the post-RIP raster file simply with one click of the mouse — saving time and getting jobs to the customer and subsequently into production faster.

<sup>1</sup> Workflow ROI Study, InfoTrends



## For digital, custom jobs, where are color corrections typically performed?<sup>1</sup>

Does your prepress or creative department have to correct color on over half of the jobs you run? Not only does this take time, but if they're experimenting with changes and making proof prints, it's costing you press time and click charges. Correcting color at the Fiery DFE with the post-RIP raster ensures a faster, more precise process.



“Soft proofing files to preview how jobs are exactly going to print helps me reduce print errors and reduce waste dramatically.”

CINDY LEY, PRODUCTION SPECIALIST  
ALLIED RELIABILITY GROUP

# Reduce the cost of producing print

Fiery Graphic Arts Pro Package provides the most powerful, comprehensive toolset to identify and correct print production problems before they result in rejected jobs and wasted clicks. Complete integration of these tools with the Fiery digital front end (DFE) makes it quick and easy to troubleshoot problems to minimize both employee and engine idle time.

## Fiery Preflight Pro



With Fiery Preflight Pro, users get the ultimate set of PDF quality control checks to ensure files will print as expected, providing more precise methods for troubleshooting print problems that impact bottom line profits.

- Verify file compliance against industry standards, like ISO (PDF/X, PDF/VT, PDF 2.0, etc), or Ghent Workgroup
- Identify potential errors like low-resolution images, overprint, or missing spot colors
- View errors and warnings in the interactive Fiery Preflight Pro report
- Automate through Fiery Hot Folders



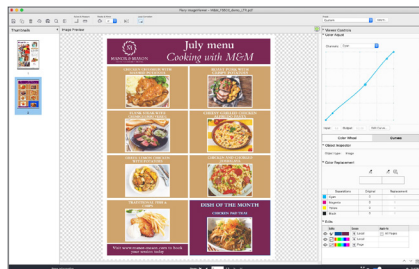
Combine with Fiery JobExpert™ to verify that a PDF meets compliance standards, then automatically configure the right color and imaging settings.

## Fiery ImageViewer

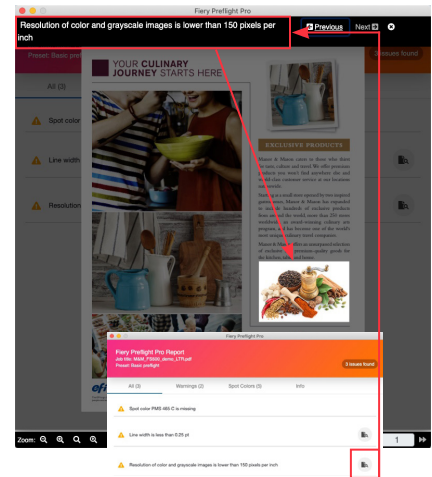


With Fiery ImageViewer, what you see is what you print. Examine post-RIP raster files at full resolution and measure actual output color values. Eliminate wasted prints by seeing exactly what will print and quickly export soft proofs.

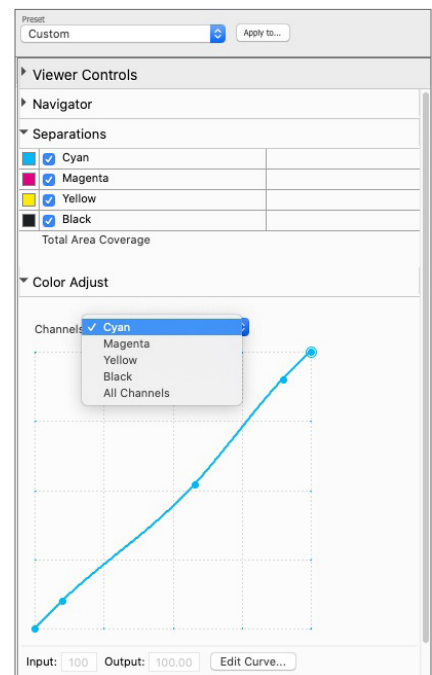
- Make color corrections on the fly, right at the Fiery DFE or any Fiery Command WorkStation® client — no need to re-RIP the file or send it back to prepress for edits. You can even replace color throughout a document or in a specific area.
- Use intuitive tone curves to adjust color. Save custom curves for use with other jobs or in automated workflows that make color edits fast and accurate.
- Use page-level controls to reorder or duplicate pages, move pages between jobs, and preview VDP finishing sets.



Fiery ImageViewer provides a visual interface for color edits.



The interactive Fiery Preflight Pro report.



Simply drag the curves to adjust the color. You can also save as a preset for repeated use.



## Fiery Postflight



Visually identify and diagnose problematic page elements in raster files. Postflight provides an additional level of analysis to complement Fiery Preflight Pro.

- Color-coded reports illustrate potential color management errors
- Availability of spot color elements on the Fiery DFE is easily identified
- Postflight includes a print sample to confirm color and image quality



A color-coded report helps determine potential color management errors.

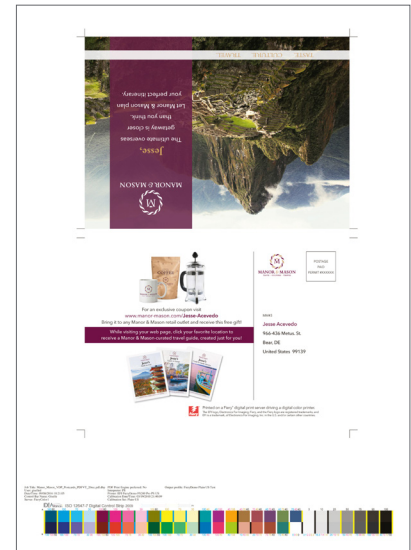
## Fiery Control Bar

Fiery Control Bar is a process control tool integrated with the Fiery DFE. Monitor print quality over time to deliver the most consistent print production and eliminate color matching failures.

- Choose from factory-standard color bars from Idealliance or Fogra, or upload your own color bar
- Flexible page placement to fit a wide range of sheet sizes
- Customize job information to include production variables such as press name, halftone screen, resolution, profile, and more
- Easily design custom control bars with Fiery Control Bar Builder



Integrates with Fiery Verify (part of Fiery Color Profiler Suite) to measure color against industry standards.

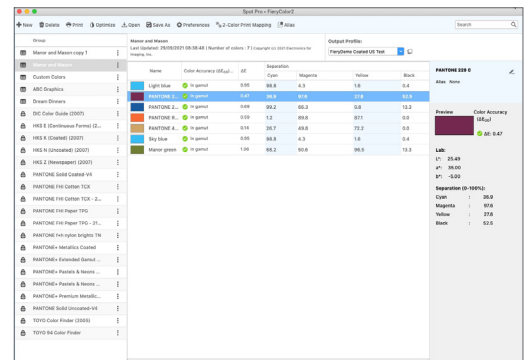


Including a control bar on printed pages helps ensure color process control.

## Fiery Spot Pro

Fiery Spot Pro provides powerful spot color management tools that deliver consistent, accurate brand colors.

- Quickly and easily create custom colors, groups, and swatch books
- Work seamlessly with designers to ensure brand color consistency; export/import libraries in ASE or CXF format and map one spot color to another using the alias function
- Optimize all spot colors in just one step. And, get one-click access to edit specific spot colors in a job.
- Easily conform to industry standards with configurable gamut warnings



Fiery Spot Pro provides powerful tools for complete brand color management.

# Build a more profitable print workflow

Use the components in Fiery Graphic Arts Pro Package to implement a simple, production workflow so that every print is sellable. Or, use individual components for standalone troubleshooting.

Learn how you can try Fiery Graphic Arts Pro Package on external Fiery FS500 Pro and newer servers for free at [fiery.com/gapro](https://fiery.com/gapro).

Start with **Fiery Preflight Pro** to spot potential issues at the earliest possible point.

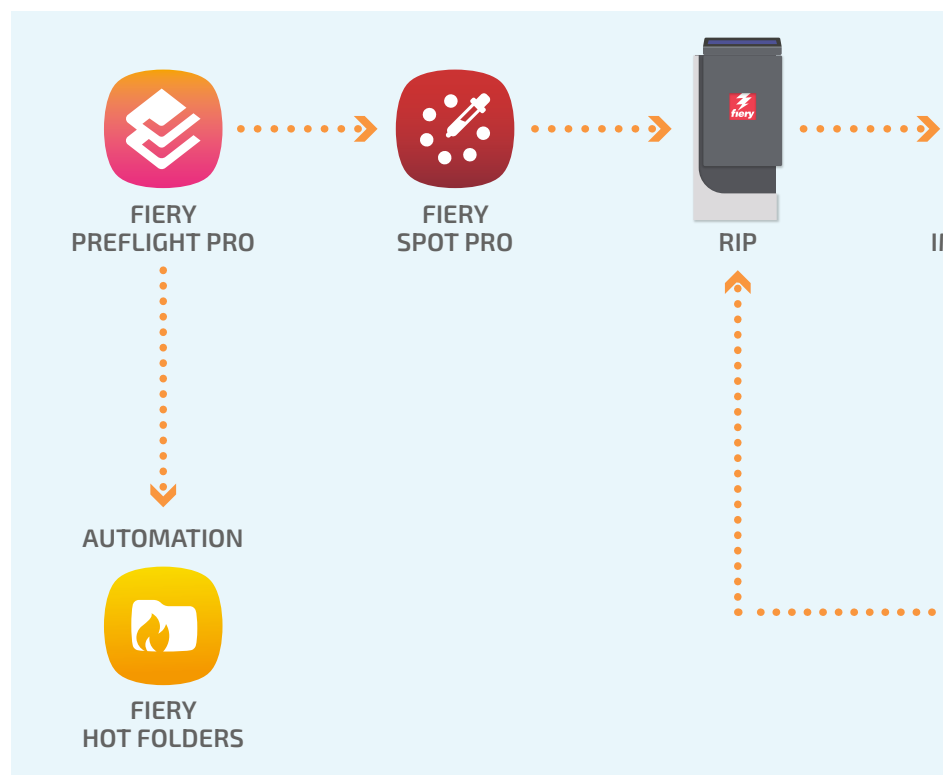
## Scenario:

The **Fiery Preflight Pro report** indicates that a file has a missing spot color. This could result in prints with inaccurate brand colors.

## Solution:

Add the missing spot color in **Fiery Spot Pro**.

**Fiery Preflight Pro works seamlessly with Fiery Hot Folders to automate the preflight process.**



**Fiery Spot Pro** helps ensure seamless communication with designers to ensure the most accurate brand color reproduction.

## Scenario:

Missing spot colors frequently show up in the **Fiery Preflight Pro report**. Different designers use different spot color names for the same corporate brand color, which can create production bottlenecks.

## Solution:

Create an alias in **Fiery Spot Pro** that maps the different spot color names to the correct corporate brand color.



View the post-RIP raster files in **Fiery ImageViewer** to see exactly what is about to be printed. If the file looks good in Fiery ImageViewer, you can confidently send the job to the print engine.

### Scenario:

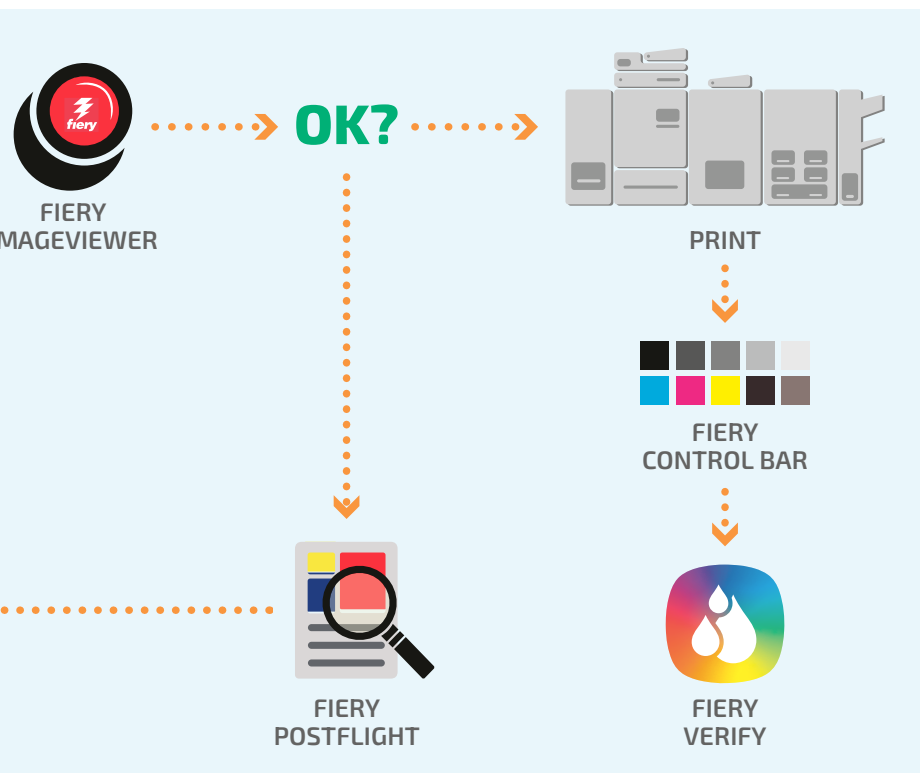
A photo in a brochure has a magenta cast. Sending it back to prepress for correction will delay production.

### Solution:

Adjust the magenta curve in Fiery ImageViewer, then print the brochure (no need to re-RIP the file).

### Soft proof:

A soft proof is just one click away to send to the print buyer for color and/or content proofing and approval.



Use the **Fiery Control Bar** to measure and monitor color throughout the print run. Ensure conformance to standards such as Fogra, ISO, or Idealliance by measuring color bars with **Fiery Verify** (part of **Fiery Color Profiler Suite**).

If the color quality of the job in ImageViewer is still not acceptable, turn on **Fiery Postflight** for an additional level of analysis.

### Scenario:

One photo on a flyer looks dark and posterized, which would not be acceptable to the print buyer.

### Solution:

Use the Postflight report to identify the profile associated with the image. Change color setting in Job Properties to properly color manage the image.



## How to buy

Fiery Graphic Arts Pro Package is available to purchase from Fiery resellers.

### Requirements:

- External Fiery server running FS500 Pro or newer software
- Fiery Command WorkStation version 6.7 or newer

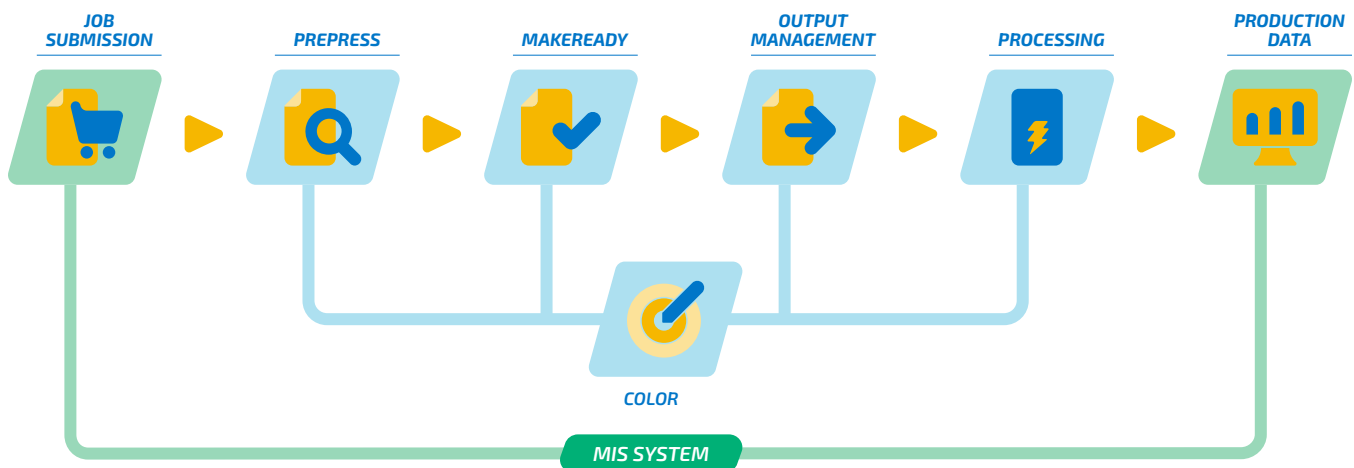
### Request your free trial



Learn how you can try Fiery Graphic Arts Pro Package for **FREE** at [fiery.com/gapro](https://fiery.com/gapro)

## Fiery Workflow Suite

Fiery Graphic Arts Pro Package is part of the Fiery Workflow Suite, a comprehensive set of advanced tools that streamline and automate print processes for a new level of productivity from job submission to output. For more information, go to [fiery.com/fieryworkflowsuite](https://fiery.com/fieryworkflowsuite).



For more information, please visit [www.fieri.com](https://www.fieri.com)

Nothing herein should be construed as a warranty in addition to the express warranty statement provided with Fiery, LLC products and services.

ColorGuard, ColorRight, Command WorkStation, ColorWise, Fiery, the Fiery logo, Fiery Compose, Fiery Driven, the Fiery Driven logo, Fiery Edge, Fiery Essential, Fiery HyperRIP, Fiery Impose, Fiery Impress, Fiery ImageViewer, Fiery Intensify, Fiery JobExpert, Fiery JobFlow, Fiery JobMaster, Fiery Prep-it, Fiery Prints, the Fiery Prints logo, Fiery TrueBrand, FreeForm, MicroPress, IQ, PrintMe, RIPChips, RIP-While-Print, Spot-On, Spot Pro, and WebTools are trademarks or registered trademarks of Fiery, LLC and/or its wholly owned subsidiaries in the U.S. and/or certain other countries. All other terms and product names may be trademarks or registered trademarks of their respective owners and are hereby acknowledged.

© 2023 FIERY, LLC. ALL RIGHTS RESERVED.

FTL\_045.09.23\_US