



## Fiery® Color Profiler Suite

Profiling & Imaging Solutions

# Professional colour management for all

Fiery® Color Profiler Suite's comprehensive set of tools are fully integrated into Fiery digital front ends to provide the best ease of use and optimal colour quality for every stage of the printing workflow. From simple wizard-driven calibration, profile creation, optimisation, and verification, through to expert-level profiling control, editing, and enhancement — this market-leading solution has tools to suit all expertise levels, and all colour management tasks.



Using Color Profiler Suite with Fiery Driven™ printers ensures colour reproduction is always accurate, consistent, and reliable — as well as stunning. This complete colour management solution lets users achieve and maintain industry standards with procedures such as the G7 method.

## Profile making

### Printer



- Fiery Edge profiling technology\*
- Create CMYK or RGB output profiles
- Create output profiles with up to eight channels (CMYK+4 flexible channels)
- Create a brand-new calibration or start with an existing one
- Match up to five Fiery Driven printers
- Choose from 46 – 4028 patches
- Bi-directional measurements
- Re-measure strips or individual patches
- Average multiple measurement sets
- Benefit from profiling presets that have been created by Fiery experts for your printer (through factory default profiles)
- Black controls with dynamic GCR
- PDF workflow for conventional presses or any non-Fiery digital print system
- Automatically install profiles on Fiery Driven printers
- Custom media size support
- Profile for specific lighting conditions
- Support for ICC v2 and ICC v4 profiles

### Monitor



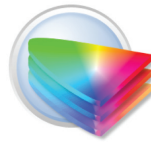
- Create profiles for any display
- Easy and advanced mode
- Grey balance optimisation
- User definable luminance settings
- Profile summary report

### Express profile



- Fiery Edge profiling technology\*
- Intuitive workflow allows even novices to create a profile, fast
- Automatically create new calibration set for new media
- Create a new output profile linked to a calibration set in five simple steps
- Server preset created for easy selection of linked calibration and profile
- Print test page to evaluate results upon completion

### Optimize



- Match proofing and production output
- Iterative device link profile optimisation for highest accuracy
- Pick best iteration for device link creation
- Direct update of device link on Fiery servers
- Insert up to two intermediate profiles
- User-defined separation options
- Black channel preservation
- Optional black point compensation
- Spot colour optimisation
- G7 optimised device link iteration target

## Profile inspection and editing

### Inspect

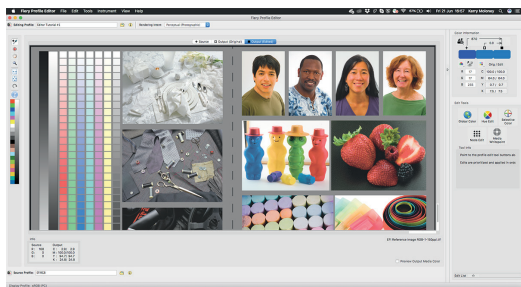


- 2D and 3D gamut viewer
- View CMYK and RGB profiles
- View spot colour profiles
- Compare multiple profiles
- Plot gamut as points or surface
- Analyse colour at specific L\*a\*b\* values

### Edit



- Edit CMYK and RGB profiles
- Soft proof profile edits
- View reference before and after edit
- Edit multiple rendering intents
- Apply single or multiple edits
- Edit in CMYK, RGB, XYZ, or L\*a\*b\*
- Sample point selection
- Measure source colour for comparison
- Global and selective colour controls
- Hue, lightness, contrast, and saturation editing
- Node editing



## Color process control

### Verify



- Intuitive workflow allows even novices to verify profiles
- Measurement based verification tool to check compliance with industry standards or references
- 2D visualization of colour gamuts
- Support for industry-standard control strips:
  - Ugra/Fogra Media Wedge 2.2a and 3.0a
  - Idealliance 2009 and 2013
  - Japan Color control strip
- Verification against:
  - Contract Proof (ISO 12647-7), Validation Print (ISO 12647-8)
  - Fogra PSD Media-Relative, Side-by-Side, Spot Colors
  - G7 ColorSpace Press with, and without SCCA (media-relative)
  - G7 ColorSpace Proof with, and without SCCA (media-relative)
  - G7 ColorSpace Targeted with and without SCCA (media-relative)
  - G7 Grayscale
  - Japan Color Contract Proof
  - In-house fully customizable standards and tolerances

### Calibrator



- Recalibrate Fiery server with any supported spectrophotometer
- Create new Fiery calibration set
- G7 Grayscale calibration built-in



\* EFI™ Fiery® Edge™ technology delivers excellent out-of-the-box colour and quality, as well as comprehensive user controls to fine-tune printed output for the best possible colour results. Fiery Edge is available for cutsheet Fiery servers running FS400 software and above, plus wide to superwide printers driven by Fiery XF 7.2 and above. Watch the video: <https://fiery.efi.com/FieryEdgevideo>

## System requirements

- Memory:
  - Minimum 4 GB
  - Recommended 8 GB
- Hard drive space: 3 GB of available HDD
- USB: 1 x version 2.0 USB port
- Minimum CPU:
  - Intel® Core™ i5 processor or higher
  - AMD Ryzen™ 5 processor or higher
- Monitor resolution:
  - Minimum 1280 x 1024
  - Maximum: 2560 x 1600
- OS support:
  - Windows 10 (64-bit only) and 11
  - Windows 2022
  - macOS 10.15, 11, 12, 13

## Foundations

- Fully integrated into Fiery servers
- Languages:  
English, French, Italian, German, Spanish, Brazilian Portuguese, Dutch, Japanese, Simplified Chinese, Russian, Polish, Turkish, Czech, Korean, Traditional Chinese
- Cross platform
- High-level of automation with supported inline measurement instruments
- Automatic online updates

## Hardware support

- EFI™ Spectrophotometers:
  - ES-1000 spectrophotometer
  - ES-2000 spectrophotometers
  - ES-3000 spectrophotometers
  - ES-6000 scanning network spectrophotometer
- Fiery Color Profiler Suite also supports non-EFI spectrophotometers, spectrodensitometers, scanning devices, and inline measurement instruments.  
See a full list at: <https://fiery.efi.com/CPSspectros>

## Learning and support

- Includes a 1, 3, or 5-year of EFI Software Maintenance & Support Agreement, learn more at: <https://fiery.efi.com/CPSmsa>
- Free eLearning courses, enroll at: <https://fiery.efi.com/CPSlearning>
- Demo: Create, edit, optimise, and inspect locked sample profiles, calibrate, and recalibrate: <https://fiery.efi.com/CPSdemo>
- Why and how to upgrade: <https://fiery.efi.com/CPSupgrade>

We develop breakthrough technologies for the manufacturing of signage, packaging, textiles, ceramic tiles, building materials and personalised documents, with a wide range of printers, inks, digital front ends, and a comprehensive business and production workflow suite that transforms and streamlines the entire production process, increasing your competitiveness and boosting productivity. Visit [www.efi.com](http://www.efi.com) or call 0808 101 3484 (UK only) or +44 (0)1246 298000 (UK), or +61 (0) 7 3625 9200 (ANZ and Asia Pacific) for more information.



Nothing herein should be construed as a warranty in addition to the express warranty statement provided with EFI products and services.

AutoCal, Auto-Count, Best Eye, ColorGuard, ColorPASS, ColorRight, ColorWise, Command WorkStation, Cretachrom, Cretaprint, the Cretaprint logo, Cretaprinter, Cretaroller, Digital StoreFront, Divisional Graphics, Distancing Graphics, DocBuilder, Dynamic Wedge, EDOX, EFI, the EFI logo, Electronics For Imaging, EPCount, EPPhoto, EPRegister, EPStatus, Estimate, FabriVu, Fast-4, FASTRIP, FASTDRIVE, Fiery, the Fiery logo, Fiery Compose, Fiery Driven, the Fiery Driven logo, Fiery DesignPro, Fiery Edge, Fiery Impose, Fiery ImageViewer, Fiery Intensify, Fiery JobExpert, Fiery JobFlow, Fiery JobMaster, Fiery Navigator, Fiery Prints, the Fiery Prints logo, FreeForm, GameSys, Hagen, Inkintensity, Inkware, IQ, iQuote, LapNet, Lector, Logic, MarketDirect StoreFront, MarketDirect VDP, MarketDirect Cross Media, Metrics, Metrix, MicroPress, Monarch, Monarch Planner, OneFlow, Optima, Optitex, Organizing Print, Pace, Pecas, Pecas Vision, PC-Topp, PressVu, PrinterSite, PrintFlow, PrintMe, the PrintMe logo, PrintSmith, PrintSmith Site, PrintSmith Vision, PrintStream, Profile®, Process Shipper, Prograph, ProGraphics, PSI, PSI Flexo, Radius, RIPChips, RIP-While-Print, SafeGuard Graphics, Spot-On, Spot Pro, Synchro 7, Technique, UltraDrop, UltraPress, UltraTex, UltraVu, UV Series 50, VisualCal, VUTEK, the VUTEK logo, and WebTools are trademarks or registered trademarks of Electronics For Imaging, Inc. and/or its wholly owned subsidiaries in the U.S. and/or certain other countries.

All other terms and product names may be trademarks or registered trademarks of their respective owners and are hereby acknowledged.

© 2021 ELECTRONICS FOR IMAGING, INC. ALL RIGHTS RESERVED. | [WWW.EFI.COM](http://WWW.EFI.COM)

FT043.10.21\_UKc