

What's new?

Fiery Color Profiler Suite 5.5.1



About Fiery Color Profiler Suite

Integrated color management solution

- Only tool in the industry that can create profiles and configure color management directly on the Fiery® DFE
- It extends Fiery server color capabilities for:
 - ICC profile creation, inspection, and editing
 - Color quality assurance
 - Output enhancement
- Bundles can include an ES-3000 or ES-6000 spectrophotometer



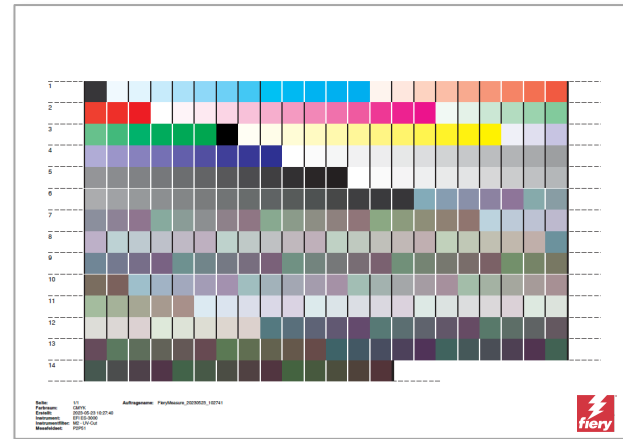
Contents

- New features:
 - Faster G7 calibration pass results
 - Fully-automated G7 calibration for inline measurement instruments
 - Improved Fiery Edge profiling chart
 - Fiery Verify enhancements
 - Full demo mode
- Technical information
- Resources



Faster G7 calibration pass result

- Based on a sorted patch layout, this new method is a faster way to achieve a G7 Grayscale pass result
 - Achieve a pass in as little as a quarter of the time and number of iterations versus previous versions



Fully-automated G7 calibration for inline measurement instruments

- G7 Grayscale calibration is now a fully automated process
- Operators do not need to attend to each step, the process is unattended after initiation
 - Provides hands-free, automated G7 calibration for users of printers with inline measurement instruments
 - Works with G7 calibration in Fieri Color Profiler Suite
 - Works with 1-step color management in Fieri Command WorkStation for Fieri servers with this feature



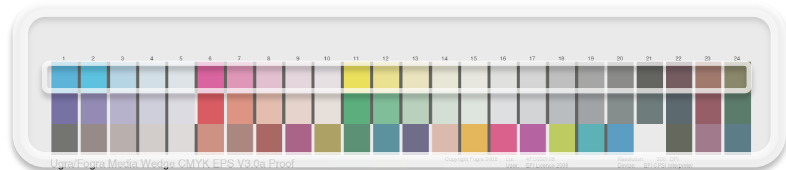
Improved Fiery Edge profiling chart

- The new Fiery Edge™ Exclusive v2 1902-patch profiling chart
 - Gets to near-4028 patch set accuracy in less than half of the measurement time
 - Results in faster high-quality results for Fiery Edge technology users



Fiery Verify enhancements

- Fiery XF and Fiery proServer users can re-measure verification wedges that were verified as part of a workflow
 - Provides the flexibility for operators to re-measure wedges to reconfirm results



Fiery Verify enhancements cont.

- The verification label data is now contained on a single page
- The verification measurement mode is now detailed on the verification label

ISO 12647-7 Contract Proof "Media Wedge"

Approved by:	-	Proof profile:	-
Reference data:	-	Proofing system:	-
Reference profile:	-	Measuring device:	EFI ES-3000 - M1
Printer:	-	Date/Time:	09.24.2021 3:46:19 PM

Criteria	Measured	Tolerance	Status
Average all patches	13 dE	3	Not OK
Maximum all patches	41 dE	6	Not OK
Paper white	2 dE	3	OK
Cyan	17 dE	5	Not OK
Magenta	23 dE	5	Not OK
Yellow	24 dE	5	Not OK
Black	17 dE	5	Not OK
Hue difference - CMYK	6.6 dH	2.5	Not OK
Hue diff. average gray	1.5 dH	1.5	OK

**NOT
PASSED**



Full demo mode

- Allows the use of Color Profiler Suite in full demo mode using pre-defined measurement data, enabling:
 - Profile creation
 - Profile optimization
 - Calibration
 - Profile editing and inspection
 - Verification
- No measurement device or printer is needed as both are simulated live in full demo mode
- Access to a Fiery is recommended
 - Allows the full use of Color Profiler Suite for demonstration and training purposes
 - Shows the full benefits of Fiery and Fiery Color Profiler Suite integration



Technical information



Operating system support

- Windows 10 (64-bit only), and 11
- Windows Server 2022
- macOS 10.15, 11, 12, and 13



System requirements

- Memory:
 - Minimum 4 GB
 - Recommended 8 GB
- Hard drive space:
 - 4 GB of available HDD
- USB:
 - 1 x version 2.0 USB port
- Minimum CPU:
 - Intel® Core™ i5 processor or higher
 - AMD Ryzen™ 5 processor or higher
- Monitor resolution:
 - Minimum 1280 x 1024
 - Maximum: 2560 x 1600



Resources



Resources

- [Why upgrade](#)
- Express [eLearning video](#)
- Color Profiler Suite [datasheet](#)
- Updates to [efi.com](#) product page



Thank you for your time!

