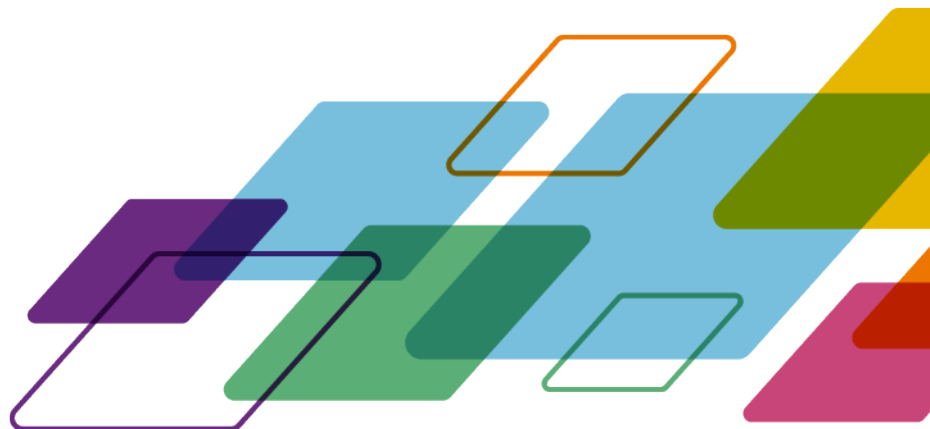




Fiery Command WorkStation 7.0

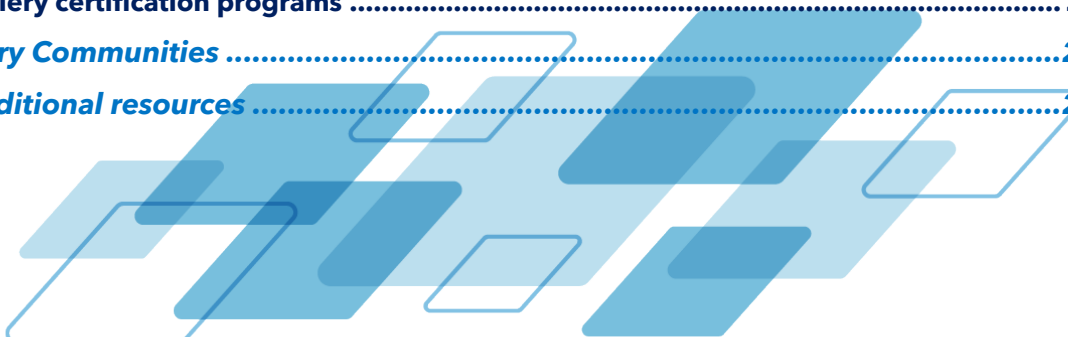
What's new guide for
Fiery Command WorkStation
Package 7.0





WHAT'S INSIDE

Overview of Fiery Command WorkStation	3
Fiery Command WorkStation Package 7.0	3
Fiery workflow software in Fiery Software Manager	4
Specifications for the Fiery Command WorkStation Package	6
New features by innovation areas	7
Color & Imaging	8
Fiery Spot Pro enhancements	8
Spot Pro variations	8
Spot color checkup	11
Job-based spot color editing enhancements	12
Automated spot color optimization.....	14
Integrated Fiery ColorGuard client	16
Productivity	17
Job Properties enhancements	17
Expanded Quick Access.....	17
Hidden finisher options.....	17
Other enhancements	18
Delete multiple presets at once	18
WebTools access via the Server menu	18
Management	19
Customize Server List enhancements	19
Dark Mode for macOS	20
Job History	20
Fiery Makeready enhancements	21
Fiery Makeready Solutions subscription licensing.....	21
Page-level scaling and offset	21
Custom imposition for Duplo DC-648 finisher.....	22
Connection	23
Fiery Account	23
Overview	23
Account creation	23
Fiery Software Manager	24
Fiery IQ applications for users of Fiery Driven cutsheet printers	24
Fiery IQ applications for supported large format printers.....	25
Workspace backup	25
License backup	26
Fiery Learning	27
Free learning resources	27
Fiery certification programs	27
Fiery Communities	28
Additional resources	29





Overview of Fiery Command WorkStation

Fiery® Command WorkStation®, the print job management interface for Fiery servers, makes printing more productive and powerful. It centralizes job management, connects to all Fiery servers on the network, and improves productivity. The intuitive interface simplifies job management, regardless of the user's level of experience.

Full cross-platform Apple® macOS® and Microsoft® Windows® support provides a consistent look and feel, plus the same functionality across computing platforms. Plus, a fully functional remote connection to a Fiery server provides the same quality results for server administration as with a local connection. Fiery Command WorkStation 7.0 supports Fiery servers running FS200/FS200 Pro and above, Fiery Central 2.9 and above, and Fiery XF 7 and above.



Download version 7.0 of Command WorkStation at www.fiery.com/CWS.

High-speed inkjet printer users should contact their printer manufacturer for information on how to upgrade to the latest version of Fiery Command WorkStation available to them.

Fiery Command WorkStation Package 7.0

Fiery Command WorkStation 7.0 is part of the Fiery Command WorkStation Package. The download and installation process for this package is handled by the Fiery Software Manager.

The package includes, Fiery Command WorkStation, Fiery Hot Folders (cutsheet and high-speed inkjet only) and Fiery Software Uninstaller (macOS only).



Fiery workflow software in Fiery Software Manager

In addition to the Command WorkStation Package, Fiery Software Manager also facilitates the installation of important Fiery software. To install or update software using Fiery Software Manager, a [Fiery Account](#) is required.

The following Fiery applications can be installed:

Fiery FreeForm Create - cutsheet and high-speed inkjet

A free, stand-alone application to create personalized jobs. Easily add variable elements such as text, images, and barcodes to existing files.

Fiery Remote Scan - cutsheet only

This application allows users to retrieve scan jobs and automatically synchronize scan mailboxes on supported Fiery servers with a user's desktop computer.

Fiery JobFlow - Windows only

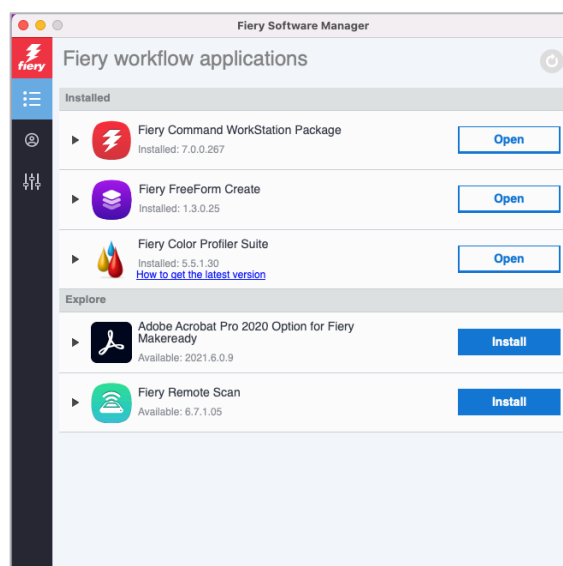
Fiery JobFlow™ enables prepress workflow automation for streamlined job processing and printing. Start with the free Fiery JobFlow Base to manage workflows including PDF conversion, Fiery Preflight¹, image enhancement², document imposition³; plus flexible options for job submission, archiving, and output. Upgrade to the paid Fiery JobFlow version to add more intelligence with rules-based workflows; advanced preflight and PDF editing, powered by Enfocus PitStop technology; and cloud-based JobFlow approval processes for maximum efficiency.

Fiery Color Profiler Suite

This software provides integrated color management functions and quality control for print systems. It extends the color capabilities of Fiery Driven™ printers with the most advanced color management tools available for profile creation, inspection, editing, and color quality assurance. Modular functions ensure color accuracy and consistency across design, print production, and office applications for all types of substrates – while increasing productivity and return on investment.

Adobe Acrobat Pro kit

To use Fiery Impose, Compose, and JobMaster™ makeready applications with Adobe® Acrobat® Pro; users need an activated license installed on the same computer. As of Fiery Command WorkStation version 6.5.0.292 and above, they can use their own software subscription for Adobe Acrobat DC with Fiery makeready applications. Or they can buy the Adobe Acrobat Pro software option kit, to use with Fiery Command WorkStation 6.7 and above, from a Fiery reseller or the [eStore](#).



Fiery Software Manager



Fiery Integration Package - Windows client only, for cutsheet

The Fiery Integration Package includes Fiery JDF and Fiery API. The Windows application can update both Windows and Linux-based Fiery servers. Users must select "Show additional features" in Fiery Software Manager Preferences to see the Fiery Integration Package and download it.

¹ Requires Fiery Graphic Arts Package, Premium Edition, Fiery Graphic Arts Pro Package, or the Fiery Automation Package. Standard on external FS500 Pro and newer servers.

² Requires Fiery Image Enhance Visual Editor

³ Requires Fiery Impose



Specifications for the Fiery Command WorkStation Package

Fiery Command WorkStation 7.0 and Fiery Hot Folders can connect to:

Fiery servers running Fiery system software:

- FS200/FS200 Pro and later
- Fiery Central 2.9 and above
- Fiery XF 7 and above

For client computers, the requirements to install Fiery Command WorkStation and Fiery Hot Folders are:

macOS clients:

- macOS 10.15 and newer
- 4 GB of RAM or more recommended
- 7 GB of available hard drive space
- Minimum display resolution:
 - For cutsheet users: 1280 x 1024
 - For wide and superwide users: 1600 x 900

Windows clients:

- Microsoft Windows 10, 64-bit, and newer
- Microsoft Windows Server 2016 – 64-bit
- Microsoft Windows Server 2019 and 2022
- Intel® Core™ i3 processor or above
- 4 GB or more of RAM
- 16 GB of available hard drive space
- Minimum display resolution:
 - For cutsheet users: 1280 x 1024
 - For wide and superwide users: 1600 x 900

To connect to earlier Fiery system software versions, users should install Fiery Command WorkStation 5.8 (for Fiery System 9), 6.4 (for Fiery System 10), 6.5 (for FS100/100 Pro) or 6.8 (for FS150/150 Pro). Find earlier versions of Fiery Command WorkStation [here](#).

Learn how to downgrade from version 6.x to version 5.8 at <http://solutions.fiery.com/cws58-reinstall-help>.







New features by innovation areas

Continuing the tradition of delivering new value to Fiery users, version 7.0 delivers a range of new features in all Fiery innovation areas including productivity, color & imaging, management, and connection.

New features in this release provide:

- New tools that help evaluate color performance and keep it accurate and consistent
- Improved functions to accelerate job setup and manage server settings
- Extended cloud services to share and restore Fiery settings, manage client licenses, and access Fiery IQ applications with the Fiery Account

New features in Fiery Command WorkStation Package 7.0

 Color & imaging	 Productivity	 Management	 Connection
<ul style="list-style-type: none"> • Fiery Spot Pro <ul style="list-style-type: none"> ○ Spot Pro variations¹ ○ Spot color checkup¹ ○ Job-based spot color editing enhancements² ○ Automated spot color optimization³ • Integrated Fiery ColorGuard client 	<ul style="list-style-type: none"> • Customize Server List* enhancements • Dark mode for macOS users* • Job History • Fiery Makeready <ul style="list-style-type: none"> ○ Fiery Makeready subscription licensing ○ Page-level scaling and offset ○ Custom imposition for Duplo DC-648 	<ul style="list-style-type: none"> • Job Properties enhancements: <ul style="list-style-type: none"> ○ Expanded Quick Access ○ Hidden finisher options • Other enhancements: <ul style="list-style-type: none"> ○ WebTools access via the server menu ○ Delete multiple presets at once 	<ul style="list-style-type: none"> • Fiery Account* <ul style="list-style-type: none"> ○ Fiery Account overview* ○ Fiery Software Manager* ○ Fiery IQ access ○ Workspace backup ○ License backup

* Also available for users of Fiery Driven large format printers.

Note: Features vary by print engine model. Please refer to the individual product datasheet or feature matrix to find out exactly which features are available.

¹ Available as part of Fiery Graphic Arts Package, Premium Edition, Fiery Graphic Arts Pro Package, and Fiery ColorRight Package

² Available as part of Fiery Graphic Arts Pro Package or Fiery ColorRight Package

³ Engine-specific feature. Check Fiery server materials to determine compatibility.

Color & Imaging

Fiery Spot Pro enhancements

Fiery Spot Pro introduces numerous new features that significantly bolster capabilities for managing and reproducing spot colors. These enhancements ensure high-quality, accurate, and consistent color output, while improving the spot color editing workflow for operators. The new features are:

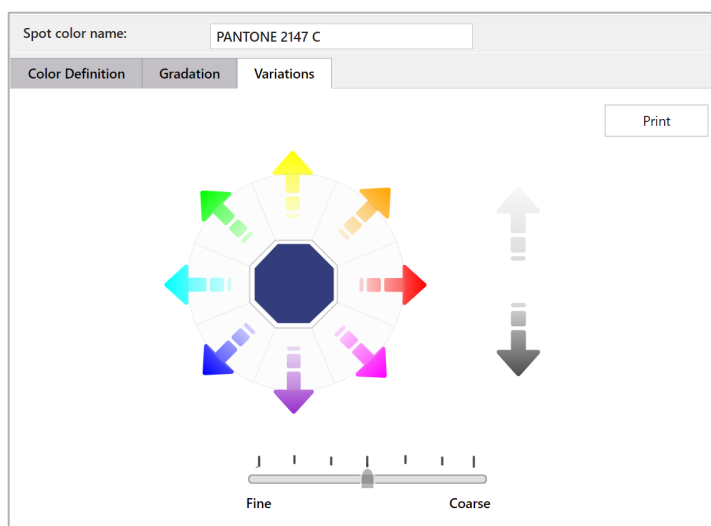
- Spot Pro variations
- Spot color checkup
- Job-based spot color editing enhancements
- Automated spot color optimization

Spot Pro variations

Spot Pro offers a variety of ways to manage how spot colors are reproduced. One of the more popular ways is to use variations, where an operator can visually choose the right option from similar variations of that spot color. Spot Pro works by converting the device-independent L*a*b color definition of a spot color into the ideal device CMYK (or CMYK+) recipe suitable for a printer based on the output profile. With variations, operators can pick from a variety of device recipes and pick the one they visually prefer.

Now, the Spot Pro variations workflow has been enhanced to include new features that improve the usability and functionality of the workflow. These new features are not available in Fiery Spot-On™.

New color adjustment interface



Operators can fine-tune color in the following ways:

- Adjust the hue by clicking on any of the colored arrows around the color
- Adjust the brightness/darkness levels by clicking on the light and dark vertical arrows
- Adjust the Fine or Coarse slider to select the increment of edits that will occur per click



Once the operator is satisfied with the visual appearance of the spot color, it's easy to print variations of this individual color.

Note that Spot Pro variations supports both CMYK and extended gamut/CMYK+ color recipes.

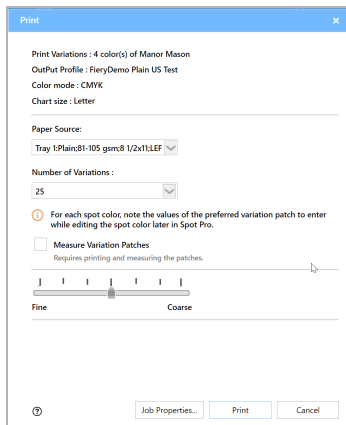
Print multiple variations/new variations patch features

If operators don't need to manually edit individual colors, they can print variations pages for a single color or multiple spot colors at the same time, right from the Spot Pro toolbar. Operators can also print variations pages after manually editing a spot color's values.

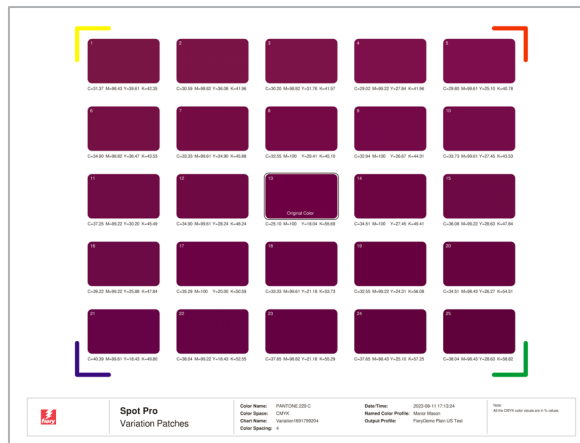
The variations pages consist of a series of patches similar in color to the selected color. When printing, operators can choose how fine or coarse the similarity of the patches is to the selected color.

If they want to, operators can measure the printed pages with a spectrophotometer. This will add the measured delta E to the printed variations pages to help guide the selection of the preferred color swatch.

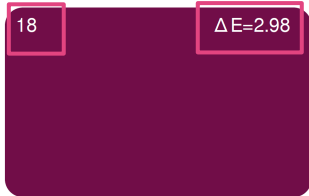
And finally, Spot Pro makes it easy to use the preferred variations color. Operators can read the patch ID number (or device recipe) from the patch they want and enter that into the Spot Pro interface.



Print options for variations pages

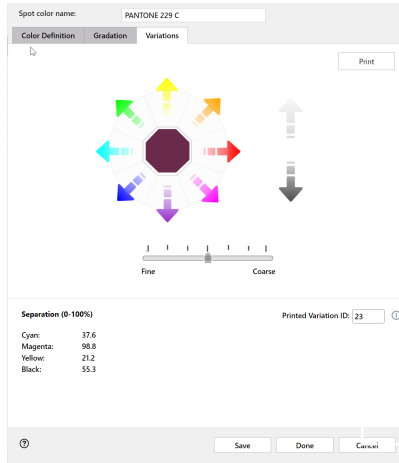


The new variations page layout



C=12.16 M=89.80 Y=9.80 K=58.43

Close up of a patch showing the patch ID number and the dE (available after measuring the page)

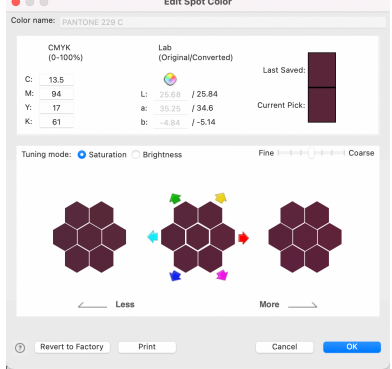
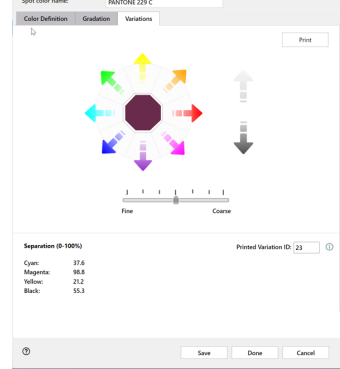


Variations interface with the chosen patch ID number entered



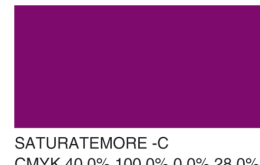





[Watch the video](#)

Comparison: Variations in Spot Pro versus Spot-On

Feature	Spot-On/Spot Pro prior to Command WorkStation 7.0	Spot Pro in Command WorkStation 7.0
Interface		 <p>Enhanced visual interface that provides more intuitive color editing Supports CMYK+/extended gamut</p>

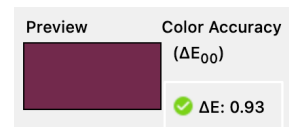


<p>Variations page</p>	 <p>Spot On Color Neighbors</p> <p>Color search</p>  <p>Spot Color Search</p> <p>Color neighbors</p> 	 <p>Spot Pro Variation Patches</p> <p>Single variations page Can print variations for multiple patches in one action</p>
<p>Patch close-up example</p>	 <p>SATURATEMORE -C CMYK 40.0% 100.0% 0.0% 28.0%</p>	 <p>18 $\Delta E=2.98$</p> <p>C=12.16 M=89.80 Y=9.80 K=58.43</p> <p>Provides a number for easy reference Can show dE if patch has been measured</p>

Spot color checkup

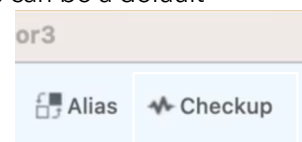
The spot color checkup in Spot Pro generates a report that shows how well the Fiery server is reproducing a set of spot colors.

In most cases, Fiery servers drive presses that print using process colors (C, M, Y, K). For each spot color, the Fiery server creates a process color recipe to match the spot color's original definition as accurately as possible, based on the press' current calibration and output profile. Now, there's a difference between what the Fiery server can print based on the press capabilities, and the original ink value of a particular spot color. That difference is measured as a numeric value in delta E 2000 and shown in Spot Pro.



With spot color checkup, operators have a way to know how any spot color is being reproduced at any given time, on their specific press. It measures the current reproducibility (based on the current behavior of the press) as compared to the Fiery server's calculation of a given spot color recipe.

To use the spot color checkup, first select a group of colors in Spot Pro. This can be a default group, like the PANTONE® Coated library, or it can be a custom group, which - for example - could include a group of colors most printed by a shop's customers. Then by clicking the Checkup button in the toolbar, the Fiery server initiates the measurement process by printing spot color





swatches, which can then be measured using a spectrophotometer (including engines with supported inline spectrophotometers).

At the end of the spot color checkup, Spot Pro presents a report that shows a health score of how well the spot colors are printing compared to the optimal recipe using a scale of 1 to 10, where 10 is the best score and 1 is the lowest. The delta E value in the spot color checkup report shows how closely the printed spot color matches the Fiery server's calculation of the recipe of that spot color. The report also summarizes the overall percentage of spot colors that printed in good health.

Low health scores can be improved by recalibrating or making a new profile. Regular use of this feature can give the operator confidence that important spot colors will consistently print to the best of their press' capability. Spot color checkup reports can be saved and referenced to compare color accuracy over time.

Fiery server: FieryColor3
Print engine: FieryDemo
Spot Color library: Manor and Mason
Spot Colors: 7
Output profile: FieryDemo Plain US Test

0.00% of spot colors indicate good health (indicated in the Health score column with a highest possible score of 10).

Color	Name	L*a*b*			Measured L*a*b*			Separation				ΔE ₀₀	Health score	
		L*	a*	b*	L*	a*	b*	Cyan	Magenta	Yellow	Black			
	Light blue	53.82	-36.37	-48.95	72.30	-10.92	-25.92	96.9	0.8	8.9	0.4	20.07	2	●
	PANTONE 229 C	25.49	35.00	-5.00	63.67	10.95	-5.45	10.6	89.0	14.9	56.1	38.19	2	●
	PANTONE 287 C	31.30	0.06	-44.63	63.97	-0.62	-20.55	96.9	59.2	2.0	12.5	33.43	2	●
	PANTONE Red 032 C	57.77	51.71	53.58	70.39	26.88	21.87	0.4	74.1	93.7	0.0	16.07	3	●
	PANTONE 465 C	64.79	9.72	36.34	74.66	5.30	19.77	16.1	37.6	69.4	5.9	10.69	3	●
	Sky blue	53.82	-36.37	-48.95	64.83	-16.69	-33.09	96.9	0.8	8.6	0.4	13.14	3	●
	Manor green	44.64	-12.92	34.83	59.40	-6.66	17.59	45.1	25.5	96.5	33.3	16.71	3	●

The low scores in the Health score column indicate that the Fiery server needs to either recalibrate or make a new profile.

Fiery server: FieryColor3
Print engine: FieryDemo
Spot Color library: Manor and Mason
Spot Colors: 7
Output profile: FieryDemo Plain US Test

100.00% of spot colors indicate good health (indicated in the Health score column with a highest possible score of 10).

Color	Name	L*a*b*			Measured L*a*b*			Separation				ΔE ₀₀	Health score	
		L*	a*	b*	L*	a*	b*	Cyan	Magenta	Yellow	Black			
	Light blue	53.82	-36.37	-48.95	51.28	-32.70	-46.73	96.9	0.8	8.6	0.4	2.83	8	●
	PANTONE 229 C	25.49	35.00	-5.00	25.83	30.98	-3.24	10.6	89.0	14.9	56.1	1.87	8	●
	PANTONE 287 C	31.30	0.06	-44.63	31.88	-0.78	-43.38	96.9	59.2	2.0	12.5	0.44	10	●
	PANTONE Red 032 C	57.77	51.71	53.58	56.16	48.35	53.12	0.4	74.1	93.7	0.0	2.02	10	●
	PANTONE 465 C	64.79	9.72	36.34	64.09	9.15	39.00	16.1	37.6	69.4	5.9	1.40	8	●
	Sky blue	53.82	-36.37	-48.95	51.46	-31.94	-46.08	96.9	0.6	8.6	0.4	2.81	8	●
	Manor green	44.64	-12.92	34.83	43.38	-12.22	32.58	45.1	25.5	96.5	33.3	1.48	9	●

After calibrating the Fiery server and re-running the spot color checkup, the health scores have improved significantly.



[Watch the video](#)

Job-based spot color editing enhancements

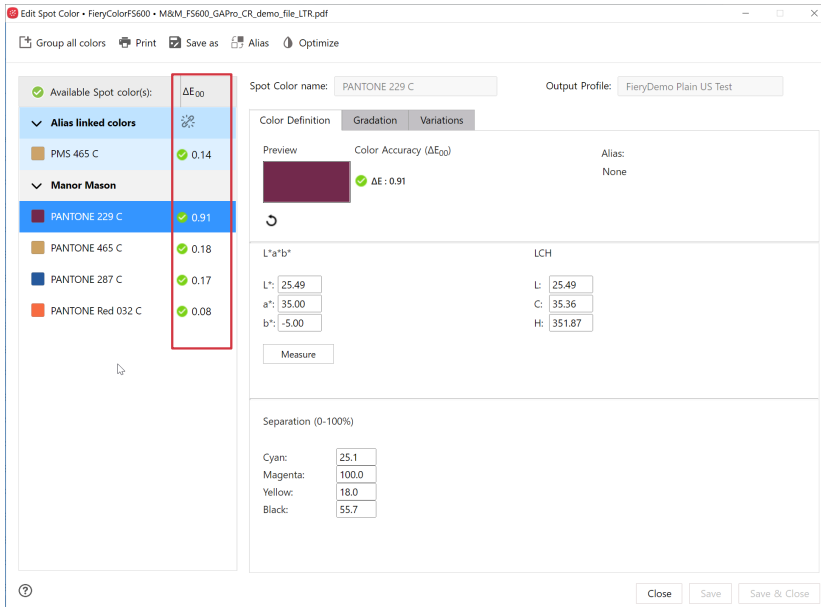
Operators may run into situations where they need to edit the spot colors in any given job. Fiery Spot Pro provides a quick, easy way to edit the spot colors in a PDF, right from Command WorkStation - with no need to even open the Spot Pro application. In addition to editing specific spot color values, job-based spot color editing allows operators to perform other functions, like creating a spot color alias, or printing swatch books.

Fiery Command WorkStation 7.0 offers the following enhancements to job-based spot color editing.



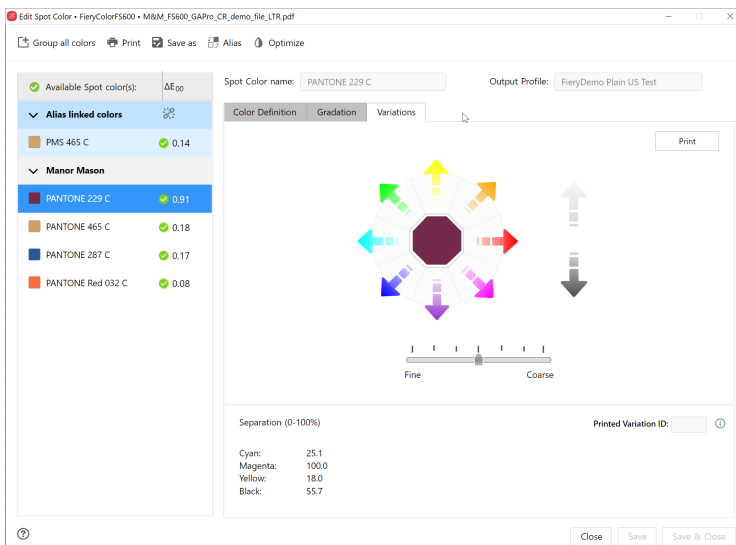
Gamut check

Operators can get an at-a-glance view of whether the spot colors in a job are in (with a green check) or out (with a yellow triangle) of a printer's gamut.



Variations

The updated Spot Pro variations workflow is now available in job-based spot color editing. Operators can even choose to print variations pages for a selected spot color, right from this interface.



The new Spot Pro variations workflow is available for job-based spot color editing, including printing variations pages.

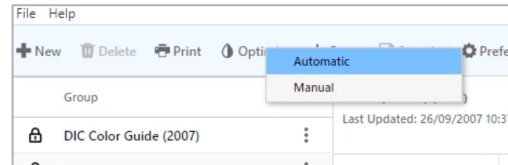


[Watch the video](#)

*Job-based spot color editing is available for Fiery FS400 Pro/FS400 and newer servers only

Automated spot color optimization

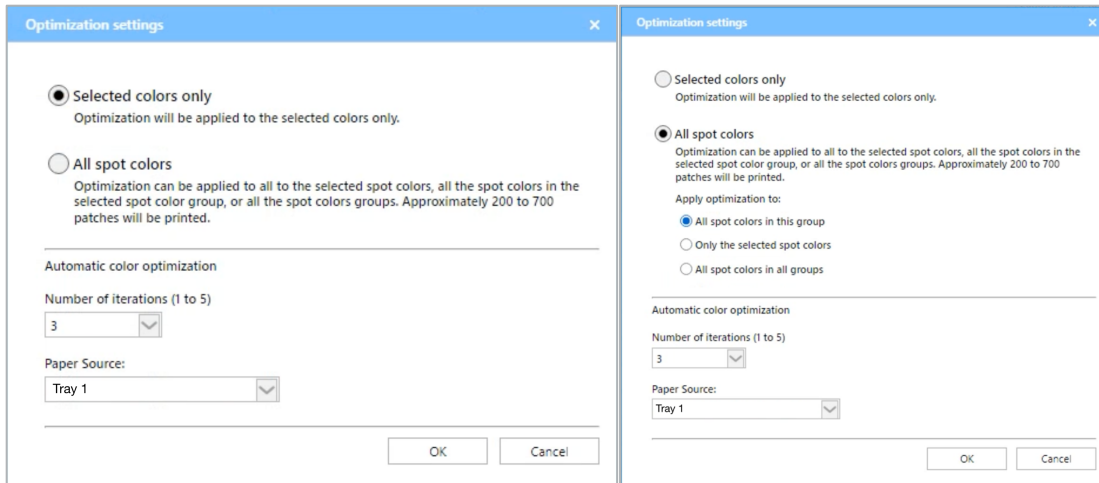
Specific Fiery servers driving print engines with compatible inline spectrophotometers can optimize an entire spot color library, or just a handful of selected colors, using this spectrophotometer. This helps improve efficiency by providing a streamlined, hands-free way to ensure spot color accuracy, leaving operators free to concentrate on other tasks.



Option to choose manual optimization or the new automatic optimization in Spot Pro

Now, these Fiery servers can automatically measure and optimize spot colors using the same inline spectrophotometer. Operators now have a fully automated spot color optimization workflow from start to finish, ensuring the most accurate spot color output, with no specialized color expertise required.

Refer to the specific materials for your Fiery server to determine support.



Choose to optimize selected spot colors, or all spot colors



Fiery Spot Color Report												
Fiery server : FieryColor1 Print engine : Color Printer Spot Color library : HKS K (Coated) (2007) Spot Colors : 8 Output profile : FieryColor1-FieryEdge-coated1						Average ΔE_{00} : 8.42 Maximum ΔE_{00} : 13.91(7) $\Delta E_{00} < 1.0$: 0.0% $\Delta E_{00} < 2.0$: 0.0% $\Delta E_{00} > 2.0$: 100.0%						
Color	Name	L*a*b*			Measured L*a*b*			Separation				ΔE_{00}
		L*	a*	b*	L*	a*	b*	Cyan	Magenta	Yellow	Black	
1		87.24	3.00	58.22	84.07	1.28	52.28	0.0	12.2	66.3	0.0	2.87
2		86.07	-2.13	95.46	85.58	-4.19	73.17	0.4	5.9	98.4	0.0	4.91
3		88.14	1.80	110.06	88.05	-6.30	76.30	0.0	2.4	95.7	0.0	8.04
4		82.76	13.91	94.42	80.59	5.81	66.77	0.0	19.2	95.7	0.0	6.87
5		80.75	21.46	100.14	78.14	9.92	64.86	0.0	23.5	95.7	0.0	8.39
6		72.80	43.01	93.53	67.62	28.81	50.45	0.0	48.2	93.3	0.0	11.20
7		66.02	57.02	90.51	59.92	42.17	44.58	0.0	64.7	93.3	0.0	13.91
8		62.64	61.66	73.62	56.69	48.20	41.83	0.0	74.9	91.4	0.0	11.13

[View the optimization report for complete details](#)



Integrated Fiery ColorGuard client

Fiery ColorGuard client functionality such as verification and recalibration notifications are fully integrated into Fiery Command WorkStation 7. ColorGuard uses the Notifications feature of Command WorkStation to show pending schedules, with the ability to choose to "Verify Now" or "Recalibrate Now" without leaving the Command WorkStation production environment.

Choosing an action takes users to the ColorGuard dialog for one of its two components; the client functions that are now built into Command WorkStation. Fiery ColorGuard also has a web application.

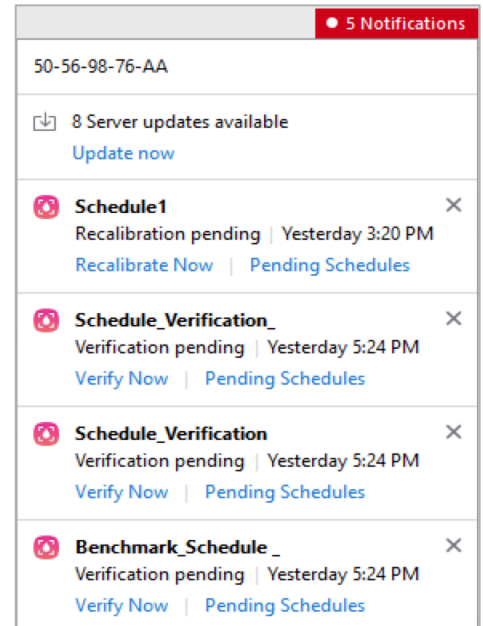
ColorGuard client functions in Fiery Command WorkStation include:

- View schedule notifications
- Action verification or recalibration

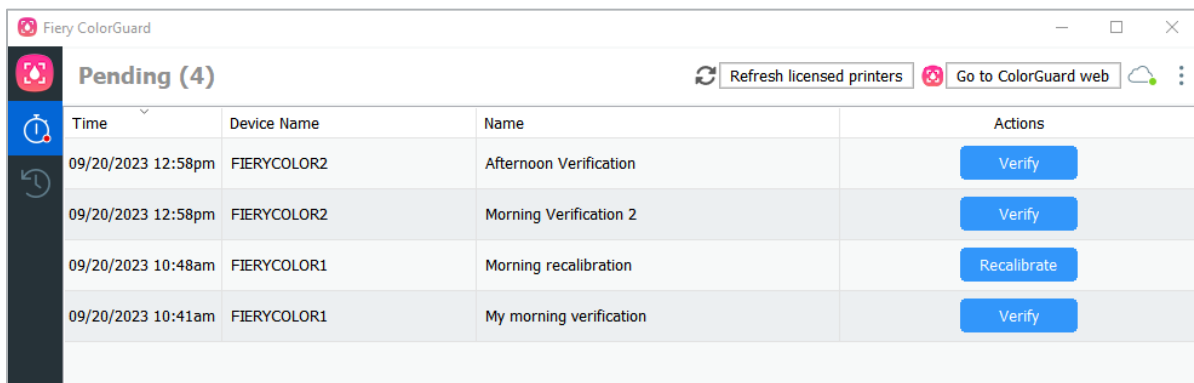
ColorGuard web application functions are:

- Schedule creation
- Verification Preset, Color Reference, Tolerance Set, and Patch Set management
- Color performance history and trends
- Color performance reporting
- License management

Users can access the Fiery ColorGuard dialog from the Server menu in Command WorkStation when at least one Fiery cutsheet server is connected to Fiery IQ.



Fiery ColorGuard notifications



Fiery ColorGuard dialog where users can take verification and recalibration actions



[Watch the video](#)



[Visit the webpage](#)

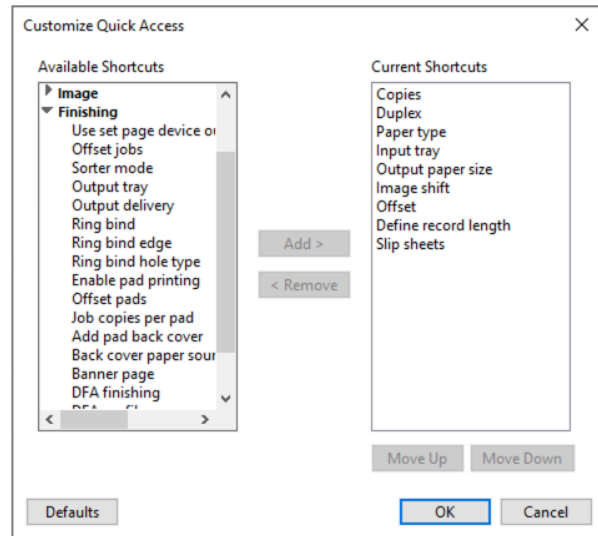


Productivity

Job Properties enhancements

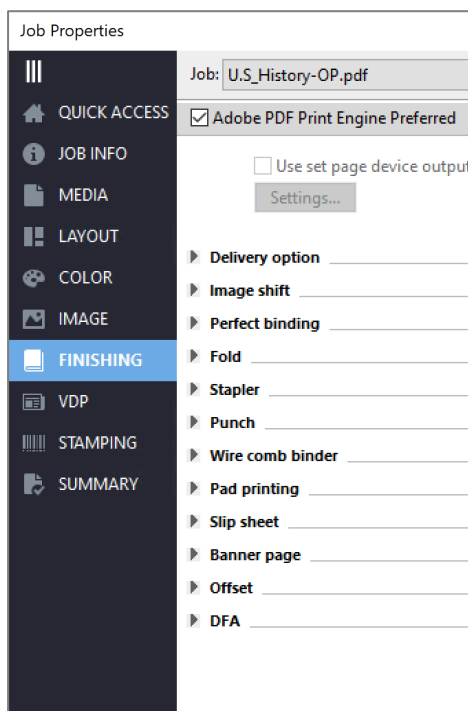
Expanded Quick Access

Users can now add more settings to the Job Properties Quick Access pane. This makes it faster to set jobs up for print.

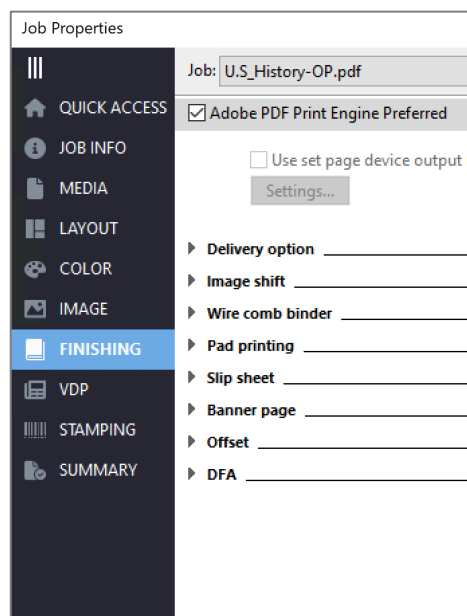


Hidden finisher options

Finishing options that are not installed are hidden in Job Properties. This provides faster navigation for operators due to less cluttered windows.



Fiery Command WorkStation 6.8



Fiery Command WorkStation 7.0

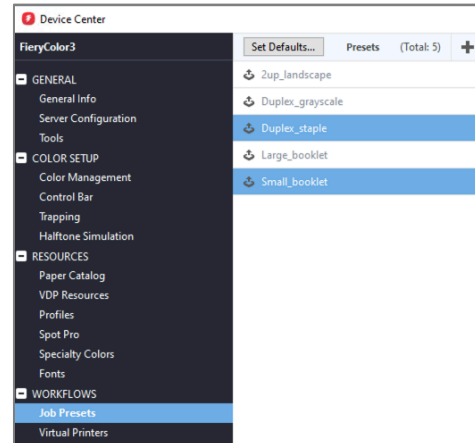


Other enhancements

Delete multiple presets at once

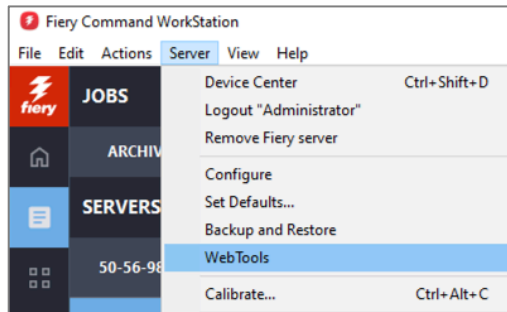
Operators can now select multiple presets to delete in a single action. This provides faster administration of server presets. Use standard operating system keyboard controls such as:

- Select all
- Shift+Click
- Control+Click



WebTools access via the Server menu

Operators can get access to Fiery WebTools from the Server menu. This speeds up access to the utility as they no longer need to know the IP address of the server and to enter it into a browser.

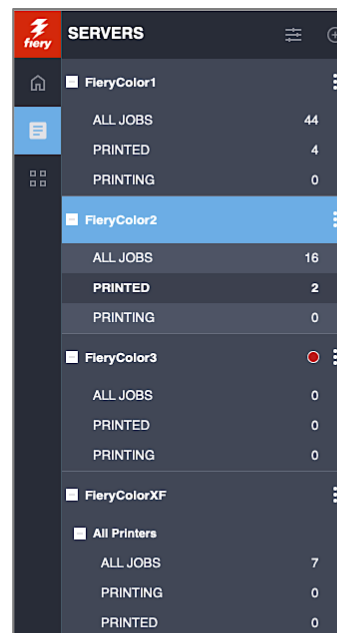
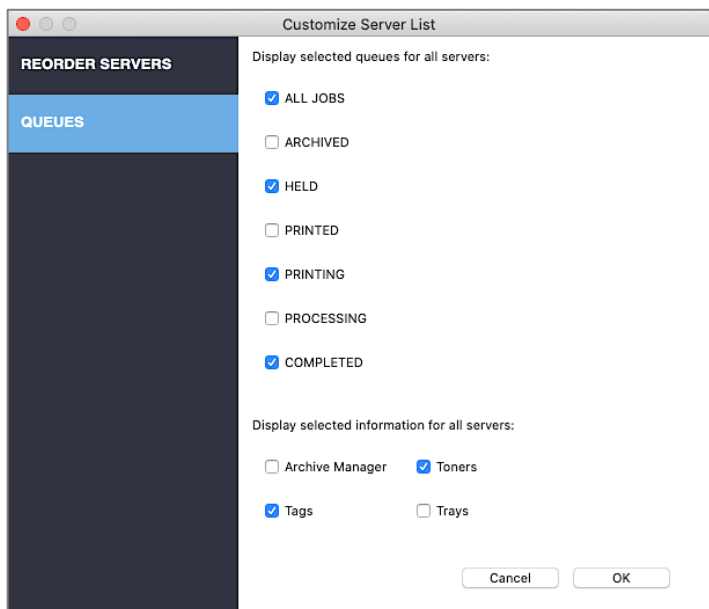




Management

Customize Server List enhancements

Operators can choose which Fiery server queues and information are displayed in the server pane. In the Customize Server List dialog, accessed from the slider bars icon at the top of the server list, users can choose which items show in the server pane for all Fiery servers. This lets them better use the server pane space to show only the things they really need.



Customize Server List Dialog with custom selections made

Two types of information can be hidden or displayed:

- Default job queues:*
 - All Jobs, Archived, Held, Printed, Printing, Processing, Completed
- Additional information:*
 - Archive Manager, Tags, Toners/Inks, Trays/Feeder

* Available queues and information depend on the server type(s) connected

Hiding less-used queues such as ARCHIVED and COMPLETED allows more servers to be shown in the pane, resulting in less scrolling.

Customization choices are saved as part of WORKSPACE settings and can be backed up to the Fiery IQ cloud for easy deployment to other users.



[Watch the video](#)



Dark Mode for macOS

For users of macOS, Dark Mode is available for the most frequently used Fiery Command WorkStation windows and tools, including:

- Job Center
- Job Properties
- Preview
- ImageViewer
- Impose/Compose/JobMaster
- Spot Pro
- Apps and Resources
- Home
- Job log



Operators can set to System, Dark, or Light, in Command WorkStation preferences.

- System – honors the mode at time of launch
- Dark – selects Dark Mode
- Light: – selects Light Mode

This popular display setting reduces glare and eye strain, and increases readability for users. It also conserves battery life for laptops with OLED or AMOLED displays.



[Watch the video](#)

Job History

Users can more easily locate the correct version of a job for further printing or work with the Job History feature. Available in the right pane in Job Center when connected to a Fiery cutsheet server, users can see the full history of a job. The actions of a job captured are:

- Created
- Processed
- Printed
- Cancelled
- Errored
- And more

Users can toggle between the Server and History pane to show up to 100 actions per job, with the most recent actions showing at the top.

Note that if the Job Log for a Fiery server is cleared, all job history information will be lost.

SUMMARY	HISTORY
<p> Processed 6/26/2023 12:32:52 PM</p> <p> Printing cancelled Copies: 18, Pages: 28 Sheets: 524 11.93in x 8.50in, Plain, 64-74 gsm 6/26/2023 12:29:54 PM</p> <p> Processed 6/26/2023 12:28:46 PM</p> <p> Printed Copies: 1, Pages: 28 Sheets: 28 11.93in x 8.50in, Plain, 64-74 gsm 6/26/2023 12:28:07 PM</p> <p> Created 6/7/2023 11:46:13 AM</p>	

Fiery Makeready enhancements

Fiery Makeready Solutions subscription licensing

Fiery Makeready Solutions – comprised of Fiery Impose, Compose, Impose-Compose, and JobMaster – are now available as subscription licensed products. The new subscription licenses come in 1-, 3-, and 5-year increments instead of an ongoing perpetual license. This provides a lower cost of entry for Fiery Makeready products, and the subscription license length can be matched to the printer lease terms.

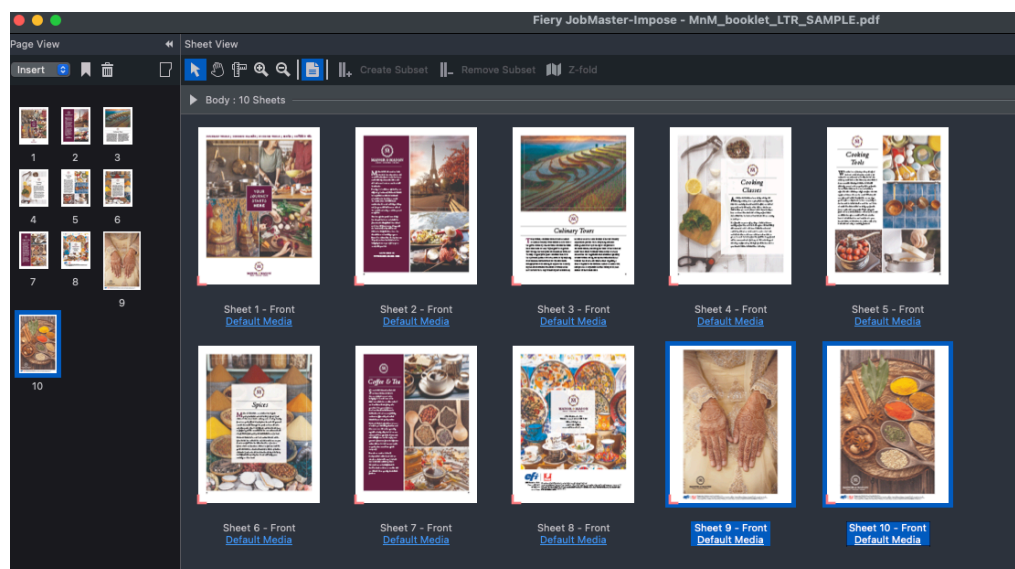
All future Fiery Makeready Solutions features are reserved exclusively for users with a subscription license. Customers with perpetual licenses can continue to access Fiery Makeready Solutions with the features available to them today, but will not have access to new features in future releases of Fiery Command WorkStation.

Page-level scaling and offset

Scale individual pages after merging files from different sources within Fiery JobMaster to ensure the document looks uniform and polished. Building on the capability to scale the entire document, users can now select specific pages or page ranges within a document and adjust individual scaling factors as needed. For example, merge A4 and letter-sized documents and scale to fit the finish size, or reposition content to add page numbers or bleed.

For each page or page range, users can adjust the finish size, page orientation, bleed, page rotation angle, scale factor, alignment, and offset settings to move the page content.

These page-level scaling and offset setting adjustments can be saved as a preset and used for future job preparation, saving time and rework.

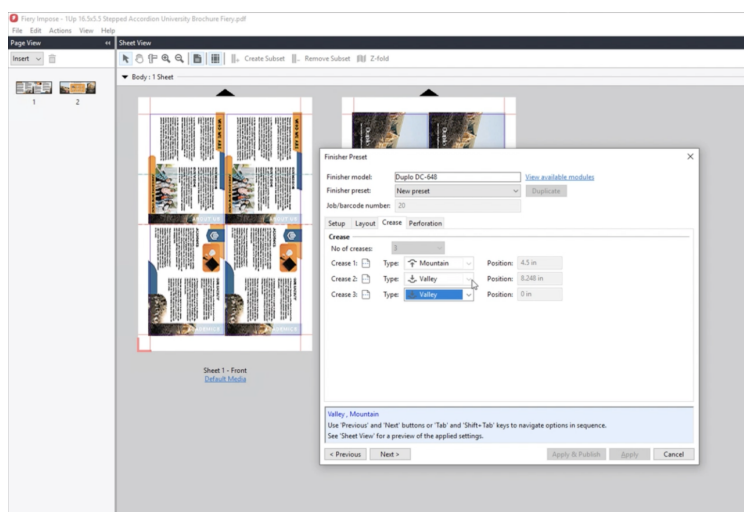


[Watch the video](#)

Custom imposition for Duplo DC-648 finisher

The advanced Fiery Impose integration with the Duplo DC-648 automatic slitter/cutter/creaser, simplifies setup from prepress to post press for high-value jobs that need customized finishing. Operators can save up to 80% in setup time by automating job preparation, eliminating manual data entry, and reducing the potential for errors.

The Fiery Impose integration offers time-saving workflows for jobs with custom layouts. With this seamless integration, an operator receives the artwork file, and can then use existing templates or create custom imposition layouts with slit, cut, crease, and/or perforation finishing marks for the Duplo DC-648 – all within Fiery Impose.



Fiery Impose supports the DC-648's unique ability to finish a job with up to 20 mountain (up) and 20 valley (down) creases in a single pass, totaling an impressive 40 creases. Additionally, Fiery Impose easily manages the increased number of slits capable with the DC-648, enabling more columns per job.

Save the custom imposition layout as a preset and use it for future jobs with the same layout.

Fiery Impose communicates directly with the Duplo DC-648 controller software so that the custom layout can be verified and stored in the Duplo controller software. When the printed job is fed through the finisher, the DC-648 will match the printed job with the correct set of finishing instructions. This integrated workflow eliminates duplicate setup between the imposition software and the finisher controller software. Operators can be confident that their complex, custom jobs will be finished correctly on the DC-648.



[Watch the video](#)



Connection

Fiery Account

Overview

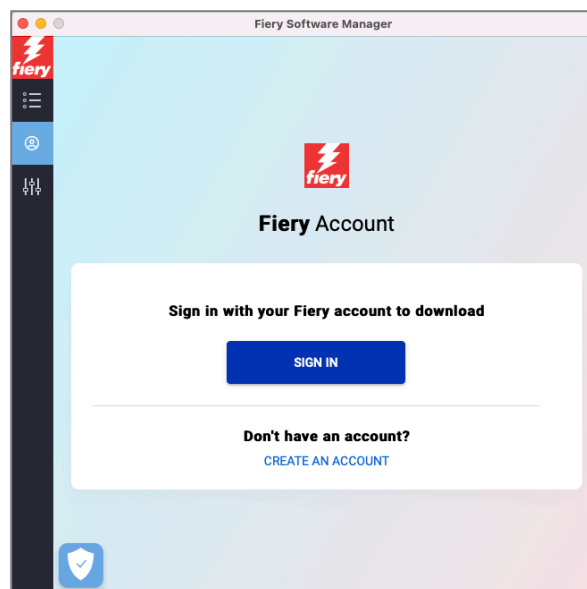
A Fiery Account brings convenient and efficient ways to work, as well as business insights from the Fiery IQ suite of applications. It lets users:

- Quickly download Fiery software*
- Use the free Fiery IQ applications**
- Try the paid Fiery IQ applications at no cost for 30 days**
- Back up and share Command WorkStation workspace settings
- Back up Fiery makeready software licenses

Each user should have their own unique Fiery Account. In order to share resources, and monitor the same printers, the Fiery Account needs to be associated with a company.

* Also available for users of Fiery Driven large format printers.

** [Learn more](#) about Fiery IQ costs and availability for large format printer users.



[Watch the video](#)



[Take the eLearning course](#)



[Visit the webpage](#)

Account creation

There are several places where users can create a Fiery Account:

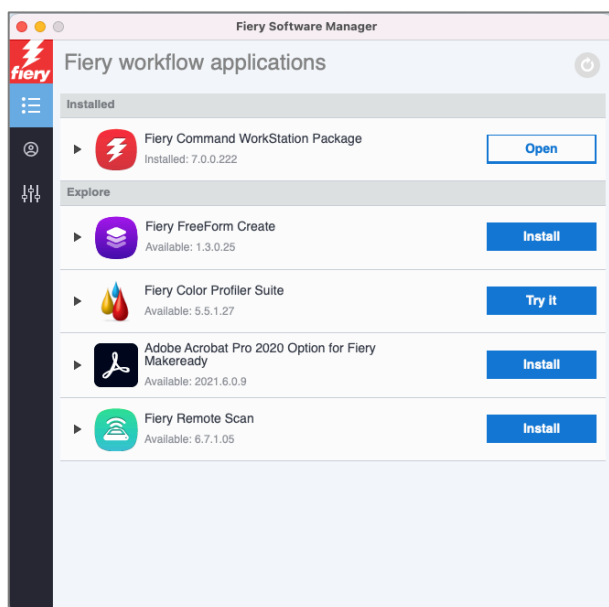
- In Fiery Software Manager
- From within [Fiery IQ](#) at iq.fiery.com
- Within Fiery Command WorkStation 7.0 and later

The most convenient place to create a Fiery Account is within Fiery Software Manager. From there, users can start and complete the process to create a Fiery Account. Creating an account is required before users can download Command WorkStation 7.0 and later from Fiery Software Manager*.

* Fiery servers that ship with Fiery Command WorkStation 7.0 and later do not need users to set up a Fiery Account for installation.



Fiery Software Manager



Fiery Software Manager is the easiest way for users to download and keep Fiery software up to date.

With Fiery Software Manager, there is no need to visit the Download Center and re-register each time to download important Fiery software.

If users are signed into Fiery Software Manager with their Fiery Account credentials, they are automatically logged into their account in Command WorkStation too.

With Fiery Software Manager 7 and later, all listed software requires a user to be signed into their account to proceed with any updates or downloads.

Fiery IQ applications for users of Fiery Driven cutsheet printers

Fiery IQ is a suite of applications that helps users optimize production. Operators can use IQ cloud and mobile apps to gain visibility, capture and transform production data into valuable analytics, and take decisive action to improve production results. This suite of applications consists of both free and paid applications.

With a Fiery Account associated with a company, users can take advantage of:

- **Fiery Dashboard – free**
 - To get a quick overview of today's key production metrics in near real-time
- **Fiery Insight – free**
 - To turn production data into actionable analytics to boost ROI, increase productivity, and make data-driven decisions
- **Fiery Notify – free**
 - To receive alerts on production-blocking events and production reports on a daily, weekly, or monthly basis
- **EFI Go – free**
 - To stay connected with print production systems in real time using a smart phone or tablet, so you can make informed decisions to achieve higher productivity

Fiery Account holders can also try the paid Fiery IQ applications at no cost for 30 days:

- **Fiery ColorGuard – paid**



- A cloud application to monitor and track the color performance of Fiery Driven printers; plus, schedule recalibrations and verifications to always print the expected color results
- **Fiery Manage – paid**
 - A cloud application that lets users remotely standardize the server configuration for same-model print devices, check system compliance, and see printer status at a glance

Fiery IQ applications for supported large format printers

Fiery IQ is a suite of applications designed to optimize production processes. With IQ, users can achieve enhanced visibility by converting production data into actionable analytics. The suite unveils the potential of production data by delivering near-time insights on performance, ink costs and usage, blocking events, and much more.

With a Fiery Account associated with a company, users can take advantage of:

- **Fiery Dashboard**
 - To get a quick overview of today's key production metrics in near real-time
- **Fiery Insight**
 - To turn production data into actionable analytics to boost ROI, increase productivity, and make data-driven decisions
- **Fiery Notify**
 - To receive alerts on production-blocking events and production reports on a daily, weekly, or monthly basis
- **EFI Go**
 - To stay connected with print production systems in real time using a smart phone or tablet, so you can make informed decisions to achieve higher productivity

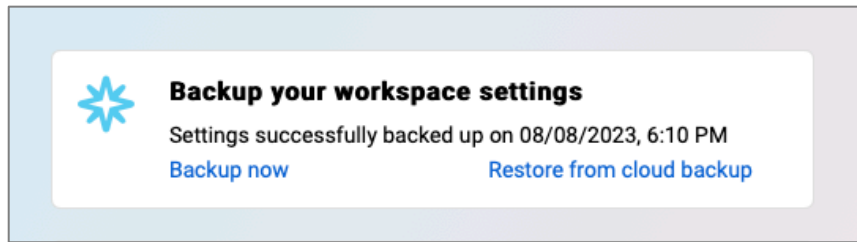
Note that Fiery IQ for large format printers is a paid suite of applications that is bundled into many EFI Superwide printers. Please contact your supplier for details.

Workspace backup

A feature of Fiery IQ cloud services is the ability to back up, restore, and share Fiery Command WorkStation client workspace settings. Users of Fiery Driven cutsheet printers can back up the following settings when signed into a Fiery Account:

- The Fiery server list, including any customizations
- Job Center columns, toolbar choices, and save views
- Job Properties Quick Access settings and local presets
- Fiery Impose templates
- Fiery Image Enhance Visual Presets

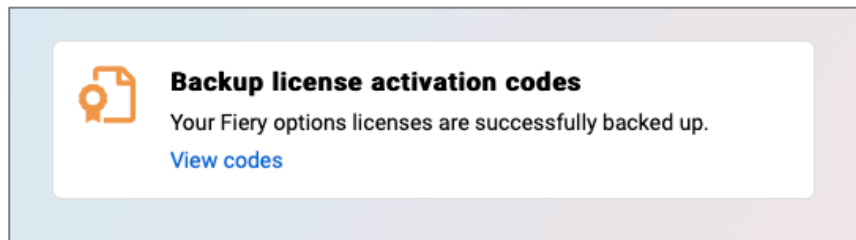
Users can perform a workspace backup or restore for the first time during the connection of Fiery servers to a Fiery Account, and can subsequently do them in in Command WorkStation Preferences. They can also perform cloud sharing of workspace settings in Preferences.



Workspace backup option during Fiery server connection

License backup

Users of Fiery Impose, Fiery Compose, and Fiery JobMaster (Fiery Makeready Solutions software); and Adobe Acrobat Pro kit; can back up their licenses to keep them safe and convenient in the Fiery IQ cloud.



License backup option during Fiery server connection



Fiery Learning



Free learning resources

[Fiery Learning](#) delivers learning resources that best fit users' with, using a variety of free, self-paced, web-based courses; videos; or hands-on, practical guides that make it easy to fit training into busy schedules.

- eLearning courses: interactive online learning sessions
- Simulation learning: learning solution that offers the opportunity to practice techniques and procedures in a realistic, immersive environment
- Express videos: short videos on key topics, delivered by Fiery subject-matter experts
- Webinars: access to recordings of World of Fiery webinars, an on-going program of educational, free webinars that feature valuable information for color professionals, and owners or managers of print businesses or in-plant/CRD operations
- How-to guides: step-by-step instructions with sample files

Fiery certification programs

In today's fast-changing world, print professionals need a convenient and affordable way to gain new skills and credentials quickly – so they can do more, be more, and take their careers to the next level. Be a step ahead of the others. Our paid certification programs will help print professionals stand out in the workplace.

Fiery Professional Certification

The Fiery Professional Certification teaches print professionals the necessary skills to optimize the performance of Fiery technology solutions. Developed by Fiery subject-matter experts, it provides the latest information on Fiery technology to develop employee skills, enhance professional development, and transform print businesses.

Fiery Expert Certification

The Fiery Expert Certification builds on the Fiery Professional Certification to develop more in-depth expertise. The expert courses help students master advanced Fiery toolsets and learn to use the full range of features.

Fiery Technician Certification

The Fiery Technician Certification program equips service technicians with the knowledge and skills required to optimize performance and maintain Fiery technology solutions.

Ghent PDF Output Suite 5.0 Conformance Certification

Having Ghent PDF Output Suite 5.0 conformance for your Fiery Driven print system is not only a way to achieve PDF/X-4 standards compliance, but also a very valuable marketing tool to show your customers that they are in safe hands when it comes to their printed products.

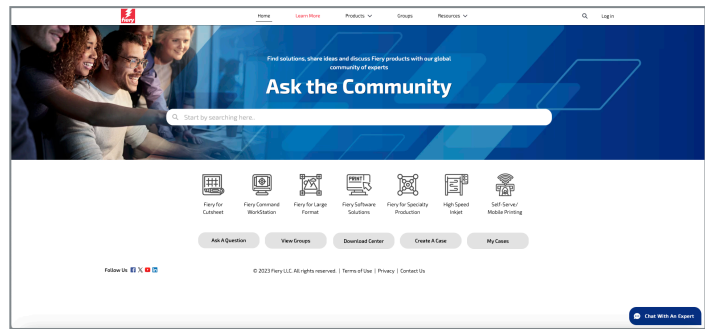
For more information on the Fiery certification programs and to enroll, visit [this web page](#).



Fiery Communities

Fiery hosts a customer engagement platform, [Fiery Communities](#). Here, Fiery users have a place to find solutions, share ideas, and discuss Fiery products with our global community of experts.

Fiery Communities also offers additional great features:



Fiery Communities landing page

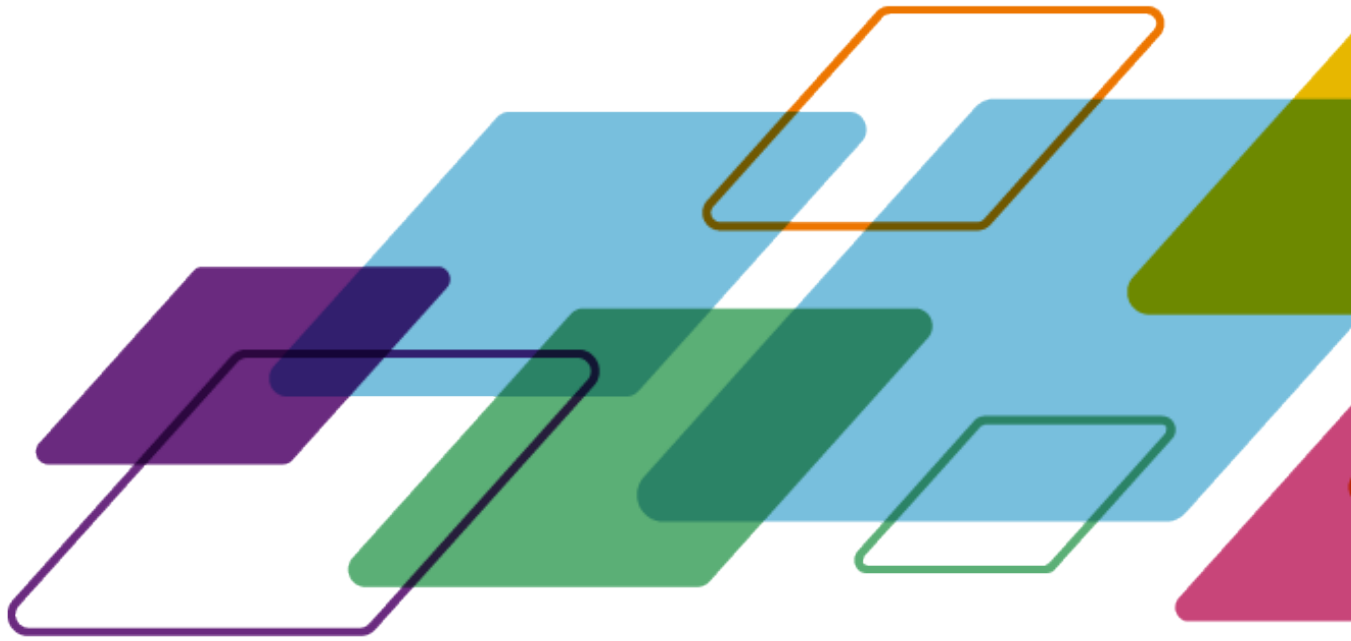
- A searchable knowledge base of technical articles created by the Fiery Technical Support team, for solutions to common or known issues
- The ability to “follow” topics that interest you, or on specific areas of focus
- A personalized feed which is created dynamically, based on your previous activities on the site
- The ability to select the “best” answer from multiple solutions
- Mobile-friendly design
- Fiery Licensing Assistant, an automated chat option designed to quickly help with licensing-related questions



Additional resources

Use this list of sales, training, and technical resources to help you broaden your knowledge of Fiery Command WorkStation, plus related products and applications.

Fiery Command WorkStation main webpage	fiery.com/cws
Fiery Command WorkStation download	solutions.fiery.com/cws
Fiery Impose 30-day free trial request	fiery.com/impose
Fiery JobMaster 30-day free trial request	fiery.com/jobmaster
Fiery Compose 30-day free trial request	fiery.com/compose
Fiery Graphic Arts Package, Premium Edition 30-day free trial request (FS200 Pro/FS300 Pro/FS350 Pro external Fiery servers)	fiery.com/gappe
Fiery Graphic Arts Pro Package 30-day free trial request (FS400 Pro and above external Fiery servers)	fiery.com/gapro
Fiery ColorRight Package 30-day free trial request (FS400 Pro and above embedded Fiery servers)	fiery.com/colorright
Fiery Automation Package 30-day free trial request (FS400 Pro and above embedded Fiery servers)	fiery.com/fieryautomation
Fiery JobFlow 30-day free trial request	fiery.com/jobflow
Fiery makeready solutions comparison (Fiery Impose, Compose, and JobMaster)	solutions.fiery.com/makeready-comparison
Fiery FreeForm Create page (download Fiery FreeForm Kit, access product information and demo videos)	fiery.com/freeformcreate
Training resources at Fiery Learning	learning.fiery.com
Fiery Communities	https://communities.fiery.com/
Fiery Command WorkStation Help documentation	http://help.fiery.com/cwspackage/index.html



For more information, please visit fiery.com.

Nothing herein should be construed as a warranty in addition to the express warranty statement provided with Fiery, LLC products and services.

ColorGuard, ColorRight, Command WorkStation, ColorWise, Fiery, the Fiery logo, Fiery Compose, Fiery Driven, the Fiery Driven logo, Fiery Edge, Fiery Essential, Fiery HyperRIP, Fiery Impose, Fiery Impress, Fiery ImageViewer, Fiery Intensify, Fiery JobExpert, Fiery JobFlow, Fiery JobMaster, Fiery Prep-it, Fiery Prints, the Fiery Prints logo, Fiery TrueBrand, FreeForm, MicroPress, IQ, PrintMe, RIPChips, RIP-While-Print, Spot-On, Spot Pro, and WebTools are trademarks or registered trademarks of Fiery, LLC and/or its wholly owned subsidiaries in the U.S. and/or certain other countries. All other terms and product names may be trademarks or registered trademarks of their respective owners and are hereby acknowledged.

© 2023 FIERY, LLC. ALL RIGHTS RESERVED.

FTL_056.09.23