

Fiery FS150/FS150 Pro

New Features Product Guide



This document represents the feature set typically included in Fiery® print servers. Actual feature set included may vary by specific Fiery models, as some features may not be supported due to specific project implementation characteristics or regional requirements. For information on a specific Fiery model's feature set, refer to that model's feature matrix or ask your Fiery vendor. Nothing herein should be construed as a warranty in addition to the express warranty statements provided with EFI products and services.

Table of Contents



Introduction.....	2
<i>New Features</i>	2
Productivity.....	3
<i>Fiery HyperRIP Enhancements</i>	3
<i>APPE 3.0</i>	4
<i>CPSI 3020</i>	4
<i>Fiery Server Automated Workflows</i>	4
<i>VDP Multi-Up Booklet</i>	6
Color and Image Quality	7
<i>Grayscale Composite Overprint</i>	7
<i>CMYK Black Point Compensation</i>	8
<i>PANTONE 336 New Colors</i>	9
<i>Custom Curve Presets</i>	10
<i>Specialty Colors Support</i>	10
Usability.....	11
<i>Fiery Ticker Enhancements</i>	11
<i>Fiery Command WorkStation 5.5</i>	12
<i>Fiery Software Manager</i>	12
<i>Bleed Edge Tabs</i>	13
<i>Fiery Remote Scan Improvements</i>	13
<i>Fiery Command WorkStation 5.6</i>	15
<i>Fiery Go</i>	15
<i>Fiery Configuration Tool</i>	16
<i>Product Specific Presets</i>	16
<i>Fiery Clone Tool for Embedded Servers</i>	17
Integration	18
<i>Fiery JDF Enhancements</i>	18
<i>Fiery Dashboard Integration</i>	18
<i>Cost-Accounting Integration</i>	18

Introduction

The Fiery® FS150/FS150 Pro system is the most innovative, scalable and integrated digital front end for digital print engines, ensuring customers get the highest return on their investment. The new features provide substantial gains in productivity, deliver accurate and amazing color, include impressive improvements in ease of use, and enhance integration that will help commercial and digital printers reduce costs and improve service.

Fiery FS150 is available for embedded Fiery servers, and Fiery FS150 Pro for external Fiery servers.

New Features

Productivity	Color/Image Quality	Usability	Integration
Fiery HyperRIP enhancements***	Grayscale Composite Overprint	Fiery Ticker enhancements**	Fiery JDF enhancements*
APPE 3.0**	CMYK Black Point Compensation*	Fiery Command WorkStation® 5.5	Fiery Dashboard integration*
CPSI 3020	PANTONE 336 new colors	Fiery Software Manager	Cost Accounting Integration
Fiery Server Automated Workflows <ul style="list-style-type: none"> Drop zones In-line selection of Server Presets and Virtual Printers 	Custom Curve Presets*	Bleed Edge Tabs	
	Specialty Colors support	Fiery Remote Scan improvements	
		Fiery Command WorkStation 5.6*	
		Fiery Go	
		Fiery Configuration Tool	
VDP Multi-Up Booklet		Fiery Clone Tool for embedded servers	
		Product Specific Presets	

* Requires Fiery Command WorkStation 5.6 / Fiery Extended Applications 4.2 available by June 2014 through online download. For more information on the full list of Fiery Command WorkStation 5.6 new features, go to the Fiery Command WorkStation 5.6 New Features Guide or visit www.efi.com/cws5.

** Features are not available on embedded Fiery servers running Fiery FS150.

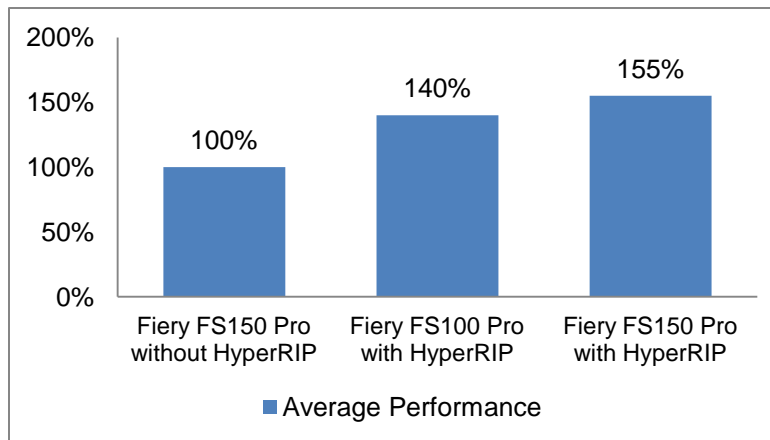
*** Only available on Fiery QX¹⁰⁰ servers

Note: Features vary by print engine model; please refer to the individual product feature matrix to find out exactly which features are available.

Productivity

Fiery HyperRIP Enhancements

Fiery HyperRIP in FS150 Pro systems is even more powerful than in previous versions. Now HyperRIP splits the job into four logical parts for parallel job processing, instead of two. This means the Fiery server processes a job an average of 15% faster than with earlier versions of HyperRIP, and an average of 55% faster than a Fiery server without the HyperRIP feature.



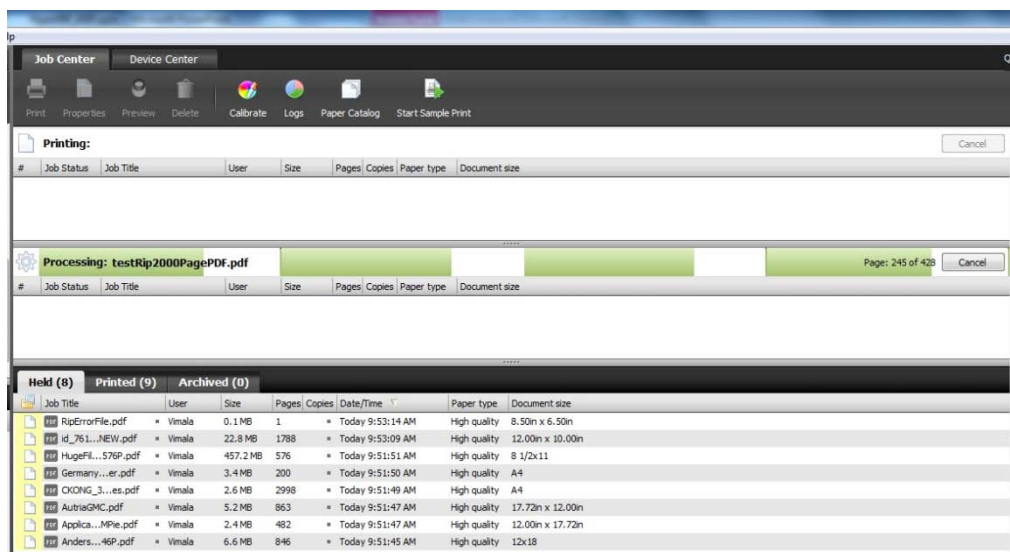
Minimum Fiery hardware requirements:

- 8 CPU cores
- 16 GB of RAM memory
- FS150 Pro system software

Fiery HyperRIP is only available for Fiery QX¹⁰⁰ server platforms.

Fiery FS150 Pro systems automatically detect hardware resources to apply HyperRIP to jobs by using two or four RIPs. It uses four RIPs when the Fiery server has at least 16 GB of RAM or more, and two RIPs when the Fiery server has more than 8 GB.

The processing bar in Command WorkStation Job Center is split, showing two or four progress bars side by side — updating simultaneously and independently to track HyperRIP progress.



A job split by HyperRIP to RIP on four processors.

Customer Benefits

- Dramatic performance improvements by processing multiple pages of the job simultaneously.
- Progress bars show multiple processors in action.
- Faster throughput means less waiting for operators and faster throughput.

APPE 3.0

Fieri FS150 Pro servers provide support for the latest PDF-native rendering platform from Adobe®.

The v3.0 enhancements announced by Adobe can be found at <http://www.adobe.com/products/pdfprintengine.html>.

Customer Benefits

- Fieri servers keep customers up to date with support for the latest industry standards.

CPSI 3020

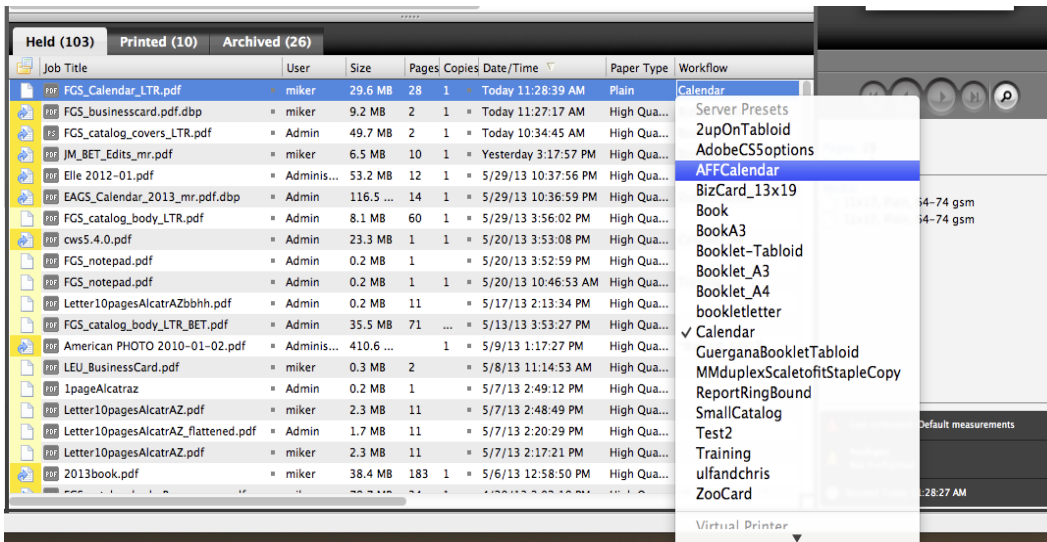
Fieri FS150 Pro servers provide support for the latest PostScript® interpreter from Adobe.

Customer Benefits

- Fieri servers keep customers up to date with support for the latest industry standards.

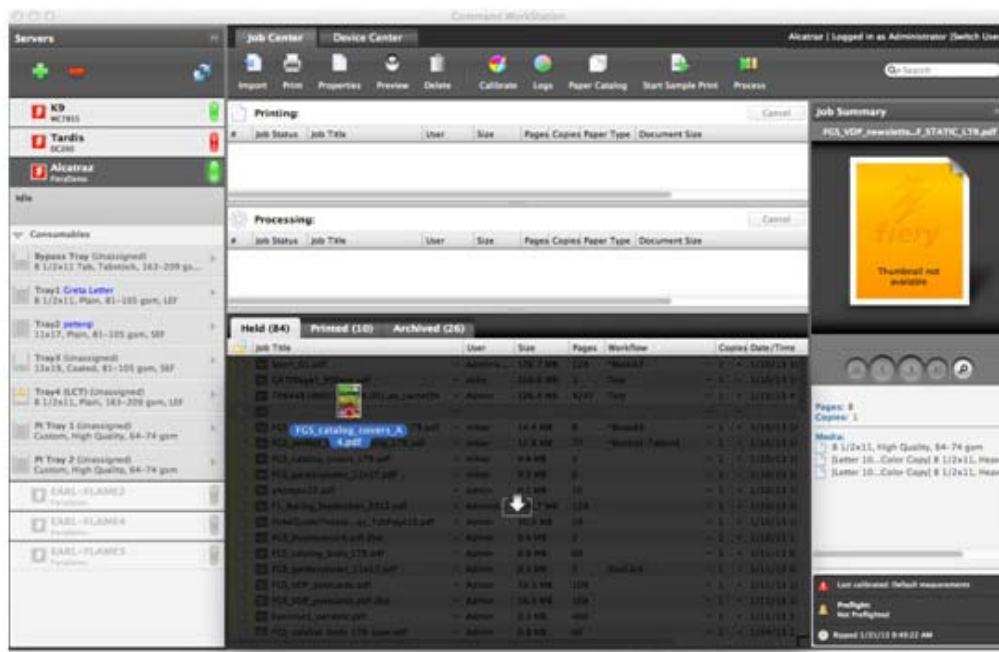
Fieri Server Automated Workflows

The Fieri Command WorkStation interface has a way to quickly select Server Presets by simply selecting one after right clicking on a job. Fieri administrators can create and publish the workflows as easily as they can create a new Virtual Printer, and can publish the workflows to make them available to all operators accessing that Fieri server. The automated workflows require a Fieri server with Virtual Printers or Server Presets. Virtual Printers come standard with external servers and are an optional feature for embedded servers. Server Presets are standard for both external and embedded servers, starting with Fieri System 10 and 10e.



Server Preset selection after a right click on a job

The new Drop Zones feature gives a new look and feel to the Fiery Command WorkStation by clearly indicating the areas open to drop files for printing. It also enhances the server list view by displaying an easy way of associating Server Presets and Virtual Printers while downloading the job onto the Fiery server; an enhanced view of the server list; and server information such as consumables, toners, alerts and more.



Drop zone indicated on the Held queue

Customer Benefits

- Easy way of associating Server Presets and Virtual Printers while downloading the job onto the Fiery server
- Enhanced view of the server list and server information such as consumables, toners, alerts and more.

VDP Multi-Up Booklet

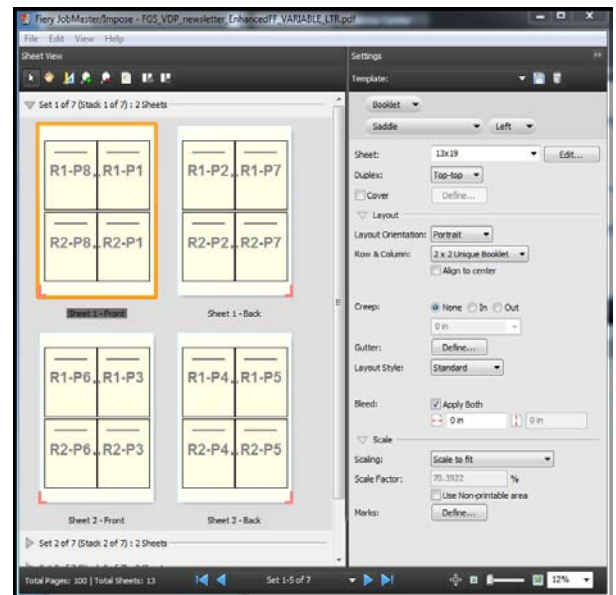
The VDP Multi-Up Booklet is a Fiery Impose feature that allows two records to be printed on a sheet, reducing costs by printing on a larger sheet size for a single click charge. It is accessed via Fiery Impose, and users can save settings as an Impose preset that can be selected from Virtual Printers or Hot Folders for automated job submission.

For records of different lengths, blank pages will be positioned automatically — based on pagination requirements. If covers are not enabled, the blank pages should fall at the end of the job. Otherwise, with covers enabled, the blank pages could fall somewhere in the middle after the job is folded during offline finishing.

The VDP Multi-Up Booklet feature is available only for variable data jobs.

Customer Benefits

- Allows faster throughput by producing a job using fewer sheets and fewer clicks.
- Reduces costs by printing two records on a larger sheet size.

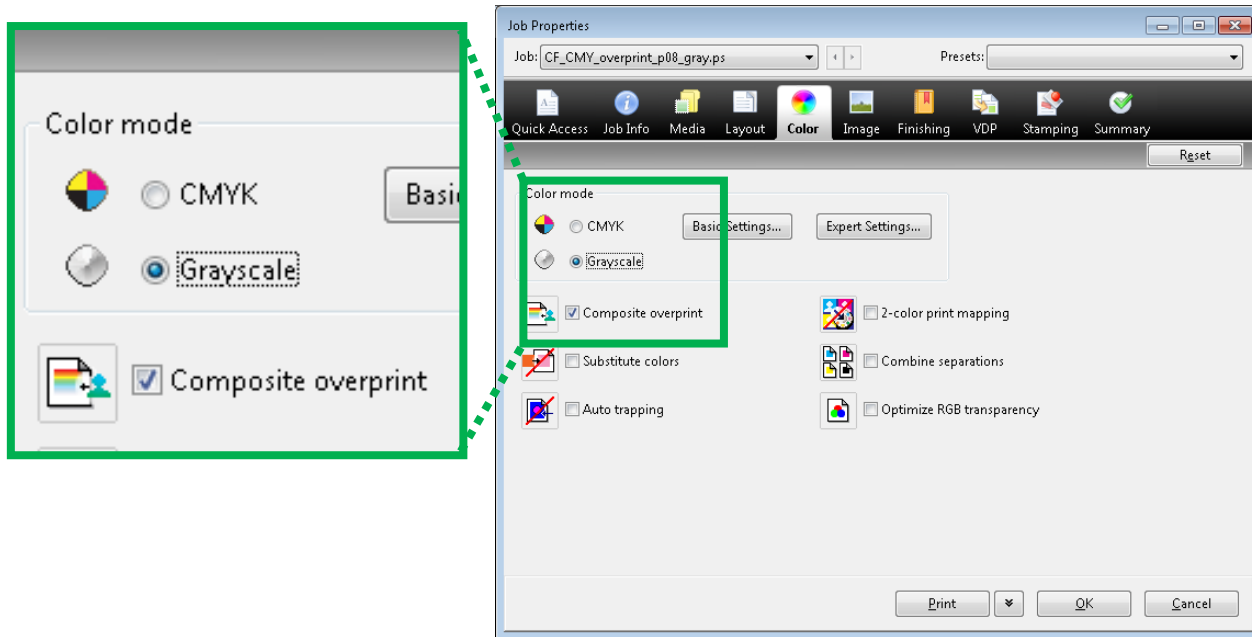


Color and Image Quality

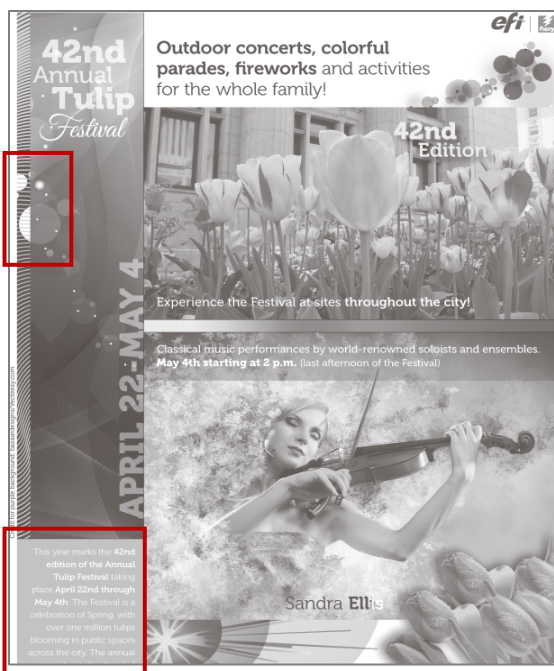
Grayscale Composite Overprint

The Grayscale Composite Overprint feature allows overprints, drop shadows and transparencies in color print jobs to render accurately even when printing in grayscale mode.

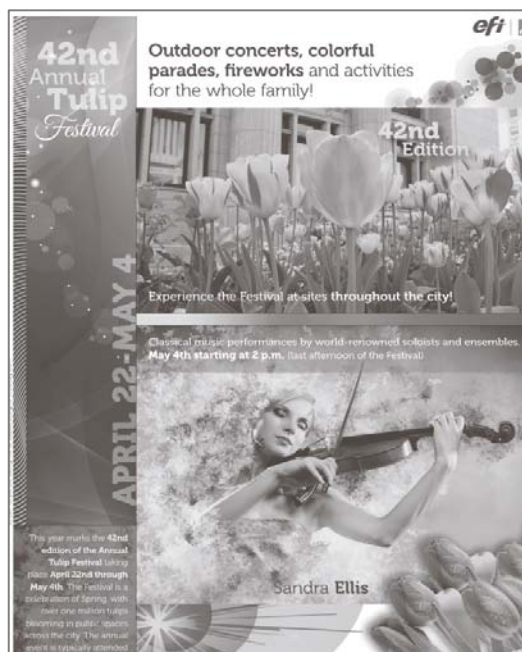
This unique Fiery feature works when printing in grayscale mode with Composite Overprint enabled and works for both CPSI and APPE interpreters.



Grayscale and Composite Overprint settings need to be selected in Job Properties to guarantee correct representation of overprints in black and white output



Red boxes indicate where errors occur because overprint is not applied



With Grayscale Composite Overprint enabled

Customer Benefits

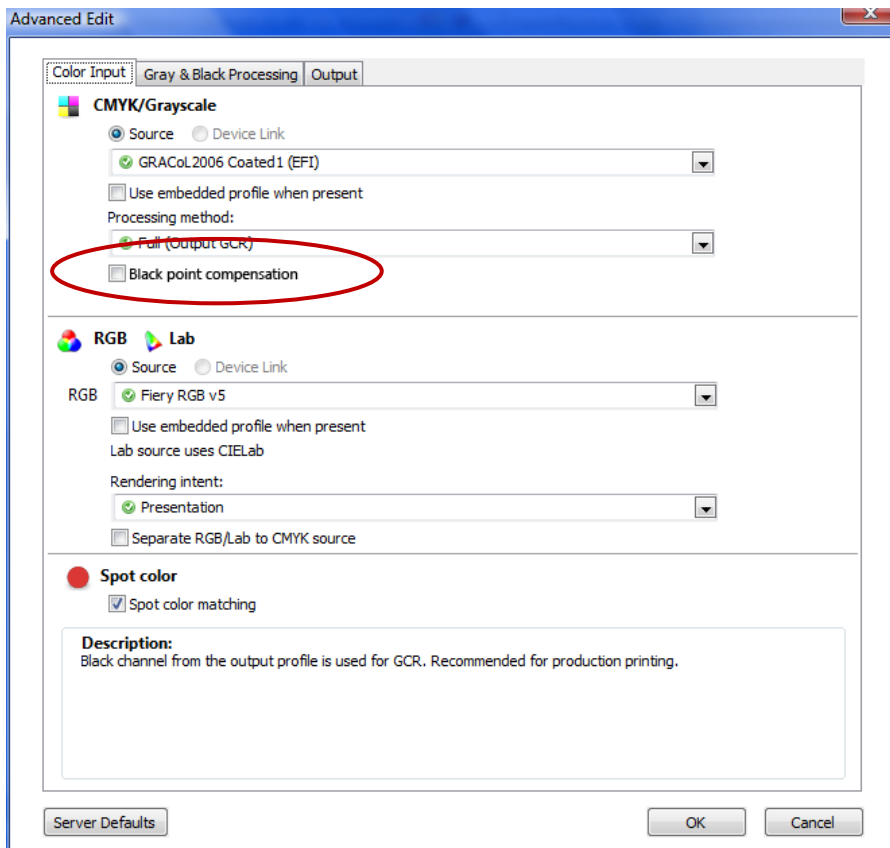
- Guarantees black-and-white output that matches the design on the first print, even if the designer has used techniques such as overprinting.
- Saves cost while producing black-and-white output and preserves the appearance of complex design elements.

CMYK Black Point Compensation

CMYK Black Point Compensation uses Fiery color management to control shadow detail when converting CMYK colors. This is especially useful for images with standard CMYK gamut sources such as ISO Coated V.2 or GRACoL, which are printed on low-quality media that deliver a smaller CMYK gamut, such as plain, uncoated paper.

CMYK Black Point Compensation is one of the features that must be enabled for perfect PDF/X-4 output or to pass the Altona and Ghent test suites. When proofing small-gamut CMYK sources such as newsprint, the feature can be disabled to more accurately render colors as they would appear on the newsprint press. Black Point Compensation is always enabled for RGB sources being converted using the Relative Colorimetric rendering intent.

The feature requires Fiery FS150 system software and Fiery Command WorkStation v5.6. See the Fiery Command WorkStation new features guide.



Black Point Compensation setting in Job Properties

Customer Benefits

- Guarantees perfect PDF/X-4 output or to pass the Altona and Ghent test suites.

PANTONE 336 New Colors

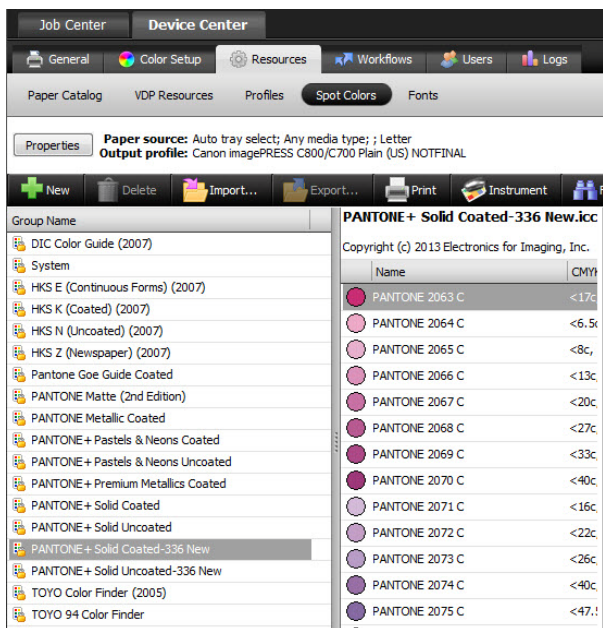
Up-to-date PANTONE® library support allows users to reproduce even more PANTONE colors accurately with the addition of the PANTONE 336 new colors on their Fiery server.

The library is located in the Device Center > Resources > Spot Colors in Command WorkStation.

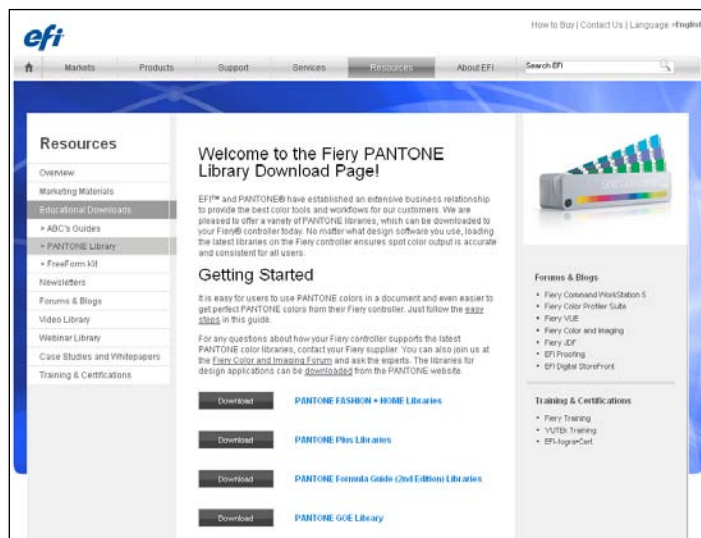
Customer Benefits

- Meets the expectations of demanding color customers.
- Properly matches the latest PANTONE colors, including new colorimetric definitions.

The full array of PANTONE libraries, including the updated PLUS SERIES of the PANTONE MATCHING SYSTEM® with 84 new colors, can also be downloaded from download.efi.com/FieryPantone.



PANTONE libraries available on the Fiery server



The latest PANTONE libraries are always available for download from efi.com

Custom Curve Presets

Custom Curve Presets is a feature in Fiery ImageViewer that provides the ability to save custom color curve edits and apply them through job-submission methods such as Fiery Driver, Job Properties, Hot Folders or Virtual Printers.

The feature requires Fiery Command WorkStation v5.6. See Fiery Command WorkStation new features guide.

Customer Benefits

- Allows automation of last-minute color adjustments for jobs that require the same type of color correction.

Specialty Colors Support

The Specialty Color feature enables output device colorants beyond CMYK to be used for special effects. This includes transparent coating for a gloss effect, white colorant for brighter output on matte paper, and various spot colors such as red or metallics.

Specialty Colors are supported from the following user interfaces:

- ImageViewer – shows up as additional color plates or curves beyond CMYK.
- Job Properties in Fiery Driver and Command WorkStation – shows up as a new Specialty Color tab for job options specific to the specialty colors.
- Fiery Driver – shows up in the Watermark tab (for clear), in the Installable Options tab, and in Consumables.
- Command WorkStation – shows up in the Consumables area and in a Specialty Color section under the Resources tab.

The automatic generation of watermark features and ImageViewer support are unique to Fiery servers.

Customer Benefits

- Printers create can higher-value output with higher profit margin.
- Graphic designers can create documents that stand out from others, using special effects for highlighting.
- Marketers can create eye-catching pieces that attract and hold consumers' attention.

Usability

Fiery Ticker Enhancements

Fiery Ticker is a visual screensaver-type application that runs locally on the Fiery external server.

The Fiery Ticker 2.0 integrates with the traditional Fiery blue bar on the top of the screen, adding the following new features to the bar:

- Access to shortcuts to Fiery applications such as Command WorkStation, Hot Folders, Fiery Remote Scan, Fiery Color Profiler Suite and Fiery Notes.
- Ability to change the color theme.
- Capability to apply job and server management actions such as to cancel processing or printing, or server actions such as restarting the server.

The Fiery Ticker v2.0 provides not only an at-a-glance view of the activity status of Fiery systems, but also quick access to the main Fiery applications and operator actions.



New Fiery Ticker bar showing Fiery server status at a glance



Fiery Ticker displays shortcuts to key Fiery applications and quick access to job management and server actions

Customer Benefits

- Increases operator's productivity, offering quick access to the most frequently used Fiery applications.

Fiery Command WorkStation 5.5

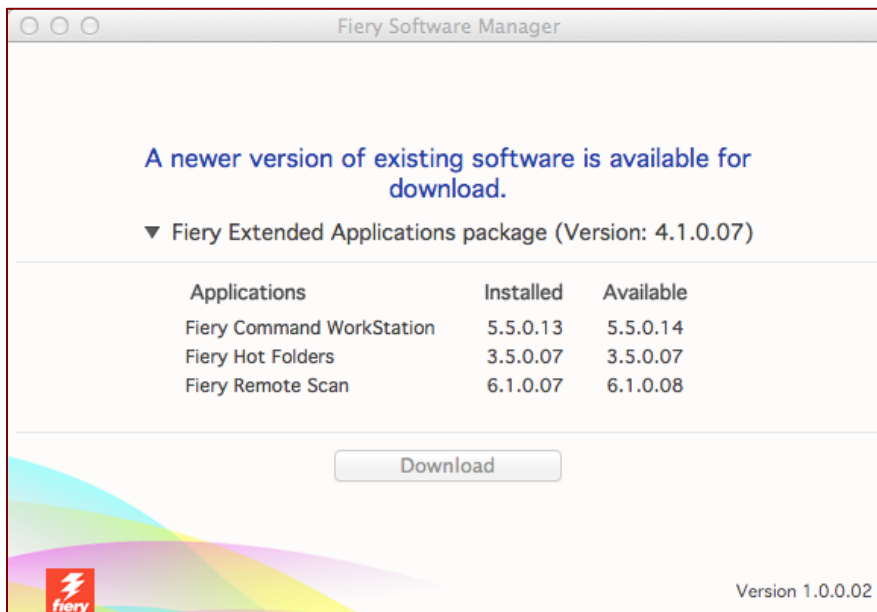
Fiery Command WorkStation v5.5 includes the following new features: *(click on the features below to know more about the feature)*

- [Fiery server automated workflows](#)
 - Drop zones
 - In-line selection of Server Presets and Virtual Printers
- [Bleed Edge Tabs in Fiery JobMaster](#)
- [VDP Multi-Up Booklet](#)
- [Fiery Software Manager](#)
- [Fiery Remote Scan improvements](#)

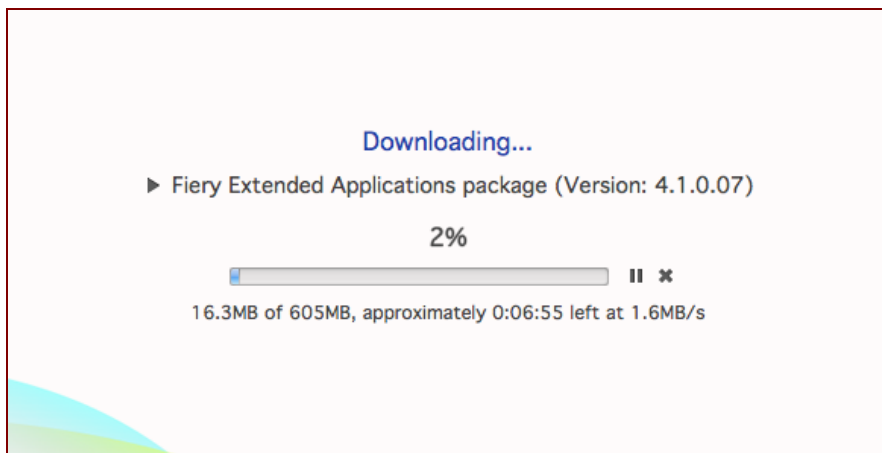
Version 5.6 of Command WorkStation will be available via download at www.efi.com/cws5 since June 2014. For more information on the Fiery Command WorkStation 5.6 new features, go to the Fiery Command WorkStation 5.6 New Features Guide or visit www.efi.com/cws5.

Fiery Software Manager

The Fiery Software Manager is a cross-platform manager for the applications included in the Fiery Extended Applications Package. It identifies and downloads the correct package to install and manages installation and uninstall processes for the applications. Users can pause or resume software downloads and can set the Fiery Software Manager to automatically download future updates in the background.



Fiery Software Manages notifies users when new versions are available in the Fiery Extended Applications Package



Users can pause or stop the download at any time during the downloading process

Customer Benefits

- Notifies when new software versions are available to download.
- Offers the ability to pause and resume the software download to avoid losing data and starting the process all over again.

Bleed Edge Tabs

The Bleed Edge Tabs feature in Fiery JobMaster allows users to produce fully finished long documents with well-defined sections without the need to use special tab media.

This feature automatically applies bleed-edge tab settings to all pages in the chapter, incrementing the tab position for each successive chapter. In order for the tab ears to show the color at the edge of the page, the finished job needs to be trimmed at the edge of the book.



Customer Benefits

- Helps produce fully finished jobs with well-defined sections without the use of special tab media.
- Offers printers a new and different type of value-add application to produce.

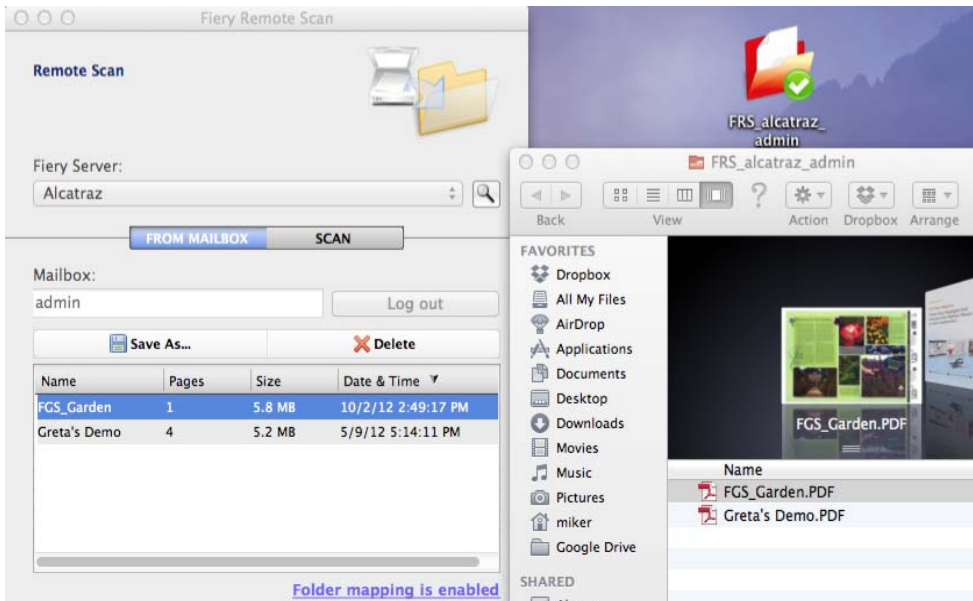
Fiery Remote Scan Improvements

The Fiery Remote Scan application offers the following improvements:

- Folder Mapping
- Auto Login

Folder Mapping

This replaces the Fiery Bridge application that was only available for Windows clients. Folder Mapping allows users who scan from the Fiery server to synchronize the Fiery mailbox contents with a local folder. Folder mapping is available on both Windows and Mac clients. With this feature, the scan jobs going to a mailbox automatically appear in a folder on the user's computer.



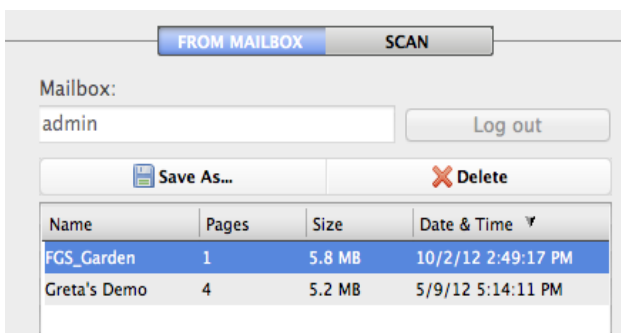
Fiery mailbox contents are displayed on the Mac client

Customer Benefits

- Faster retrieval of scanned jobs.
- Windows and Mac support without the need to install additional applications in the Fiery Extended Applications package.

Auto Login

The Auto Login feature remembers the mailbox name and password of Fiery users so they only have to enter mailbox login information once.



User login is automatically recognized

Customer Benefits

- Helps speed up the overall scanning process.

Fiery Command WorkStation 5.6

Fiery Command WorkStation v5.6 will be available in June of 2014 by online download at www.efi.com/cws5 and will include the following new features:

- *Job List Filtered Views*
- *Fiery JDF v1.3 with Fiery Integration Manager*
- *Online Help*
- *Access to Fiery Online Resources web page*
- *Fiery Dashboard integration*
- *Fiery ImageViewer 2.0*
 - New user interface
 - Custom Curve presets
 - Specialty Color support
 - Improved PDF softproof export
- *Fiery JobMaster improvements*
 - Multi-bank tabs
 - Page numbering enhancements
- *Create New Job*
- *Expanded localization (Russian, Turkish, Polish, Czech)*

For more information on the Fiery Command WorkStation 5.6 new features, go to the Fiery Command WorkStation 5.6 New Features Guide or visit www.efi.com/cws5.

Fiery Go

Fiery Go allows operators to manage Fiery Driven printers from their iPads and iPhone devices. It allows monitoring of the status of multiple Fiery Driven printers to manage print jobs from anywhere in the print shop. Using Fiery Go, operators can perform multiple job actions such as printing, deleting, previewing and defining job attributes. The app sends alerts about consumable status, errors in the print job, paper jams and more — so that operators can take immediate action.

Fiery Go provides more flexibility and allows operators to multi-task for a more efficient workplace and higher productivity. The app is simple to use, takes just minutes to deploy and is free.

To download Fiery Go and get additional information visit Apple iTunes store at <https://itunes.apple.com/us/app/fiery-go/id672206364?ls=1&mt=8>

For additional information on technical requirements and a video tour refer to <http://fiery.efi.com/fierygo>

Benefits:

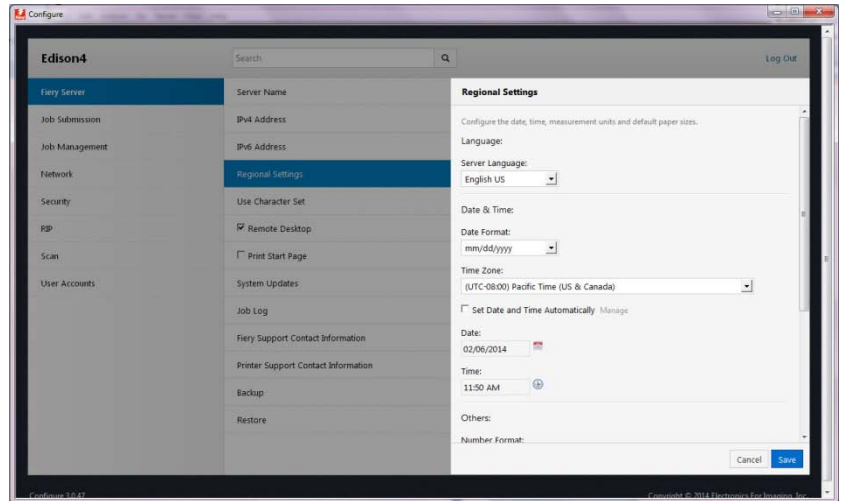
- Allows to manage the jobs on Fiery servers from anywhere in the print shop
- Offers the flexibility to multi-task for a more efficient workplace



Fiery Configuration Tool

The Fiery Configuration Tool allows the Fiery administrator to configure the Fiery server for a specific print environment. It replaces the tool available after selecting the Configure button in the Fiery Command WorkStation Device Center under General/ Server Configuration. When the Configure button is selected, the Fiery Configuration Tool displays a browser-based user interface with the following:

- The current Fiery configuration and access to the Edit button to enter modifications.
- A check for the Product Updates button to open a list of available software updates for that Fiery server (these updates are the same as those found using the old System Update page in Configure).



The Fiery Configuration Tool provides the following:

- Support of all current Web browsers without the need for special plug-ins.
- Three menu levels to allow users to glide between settings easily.
- Inline guidance to minimize mistakes.
- Search function to access relevant settings more quickly.
- Support for constraints to guide users when selecting conflicting settings.
- Usability improvements that allow settings used in multiple places, such as email or proxy, to be linked for easy access.
- Restart handling: the tool is aware of which settings can be applied instantly and which require a restart or reboot. If the settings chosen require a restart/reboot, the tool notifies the user at the top of the screen. Settings that can be applied instantly are saved immediately.
- Data transfer over HTTPS for additional security.
- Updated config sheet to reflect the categories displayed in the current Fiery configuration view.

Customer Benefits

- Helps administrators get the Fiery server ready for production in shorter time.
- Minimizes service calls.

Product Specific Presets

Fiery servers include five server presets to help users quickly set up jobs with some frequently used print settings, and also to promote the use of server presets and workflows.

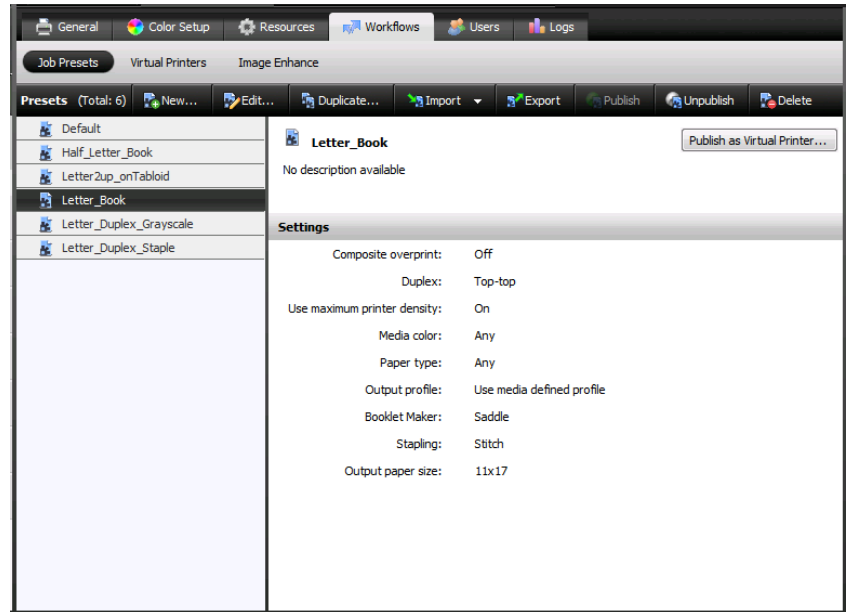
The server presets include the following:

U.S. Presets

1. Half-letter booklet
2. Letter booklet
3. Letter duplex grayscale
4. Letter duplex staple
5. Letter 2-up tabloid

Metric Presets

1. A5 booklet
2. A4 booklet
3. A4 duplex grayscale
4. A4 duplex staple
5. A4 2-up A3



Product-specific presets available to all Fiery users

Fiery Clone Tool for Embedded Servers

The Fiery Clone Tool for Embedded Servers creates an identical copy of the entire Fiery server to an image file, which can then be used for a fast and easy system recovery. This feature is intended for use by Technical Service Representatives only. The Fiery Clone Tool for Embedded Servers can be used on any identical Fiery server model. There are no restrictions on the Fiery options included on the clone.

The Fiery Clone Tool for Embedded Servers supports System 8eR2 and later, on Linux operating systems only. The tool will display an error if used on an unsupported Fiery server. For more information, refer to the User Guide available in the [EFI Download Center](#).

This tool is booted and launched from a USB drive prepared by the USB Prep Tool version 1.3.4 or later. The minimum size for the USB drive is 4 GB.

The Fiery Clone Tool for Embedded Servers software can also be downloaded from the [Download Drivers](#) page of efi.com. Click the Application Software and Tools tab to select Fiery Clone Tool for Embedded Servers.

Customer Benefits

- It achieves an effective cloning process with simple and intuitive steps.
- Delivers easy and fast recovery of the Fiery embedded server. Restores the system to production mode in minutes. .

Integration

Fiery JDF Enhancements

Requires Fiery Command WorkStation 5.6 / Fiery Extended Applications 4.2 available by June 2014 through online download. For more information on the Fiery Command WorkStation 5.6 new features, go to the Fiery Command WorkStation 5.6 New Features Guide or visit www.efi.com/cws5.

Fiery Dashboard Integration

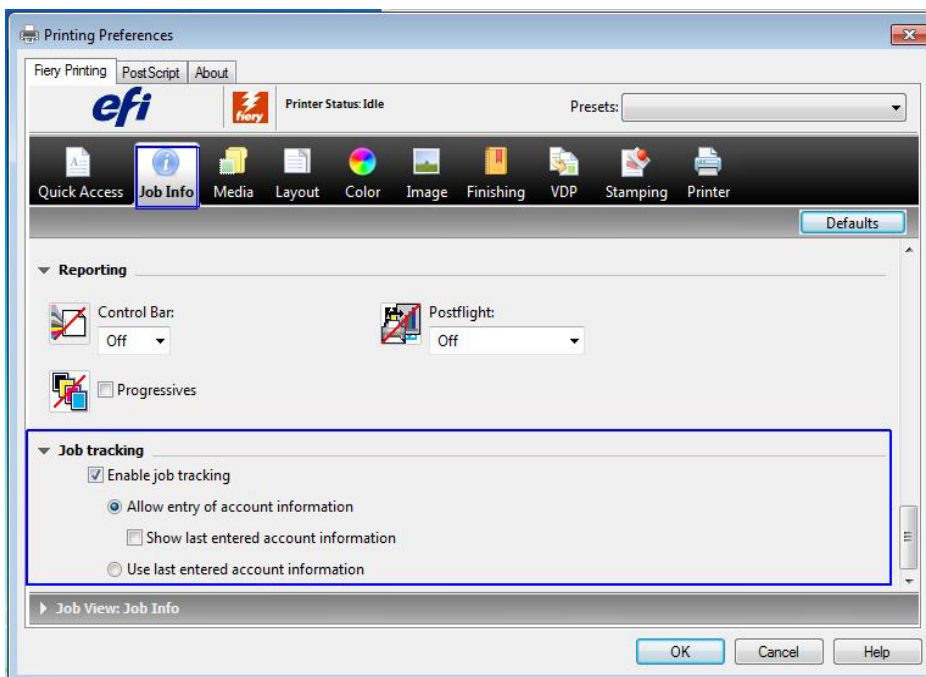
Requires Fiery Command WorkStation 5.6 / Fiery Extended Applications 4.2 available by June 2014 through online download. For more information on the Fiery Command WorkStation 5.6 new features, go to the Fiery Command WorkStation 5.6 New Features Guide or visit www.efi.com/cws5.

Cost-Accounting Integration

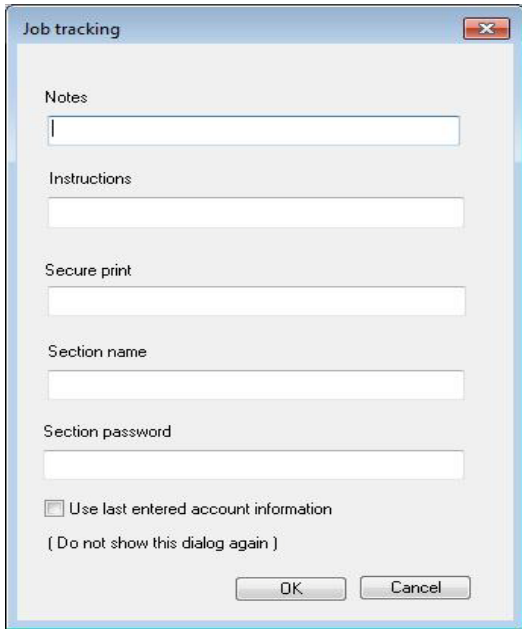
Fiery FS150 systems include version 4.5 of the Fiery Driver which has implemented Job Cost Tracking as its new feature. Job Cost Tracking configures the print driver to record the accounting information included in the print job allowing integration with cost accounting solutions. The account code assigned is associated with a specific department or client project and provides accurate printing costs that can be allocated back to the internal department or client project.

A pop-up dialog box comes up immediately after users click Print to remind them to enter the data.

No validation is performed on the data entered in the pop-up dialog box. Any required validation is done by the print engine.



Job Tracking setting in Fiery Driver v4.5



A screenshot of a 'Job tracking' dialog box. The dialog has a title bar with a close button. It contains several input fields: 'Notes', 'Instructions', 'Secure print', 'Section name', and 'Section password'. Below these fields is a checkbox labeled 'Use last entered account information' and a text label '(Do not show this dialog again)'. At the bottom are 'OK' and 'Cancel' buttons.

Job tracking

Notes

Instructions

Secure print

Section name

Section password

☐ Use last entered account information

(Do not show this dialog again)

OK Cancel

Job Tracking account information required