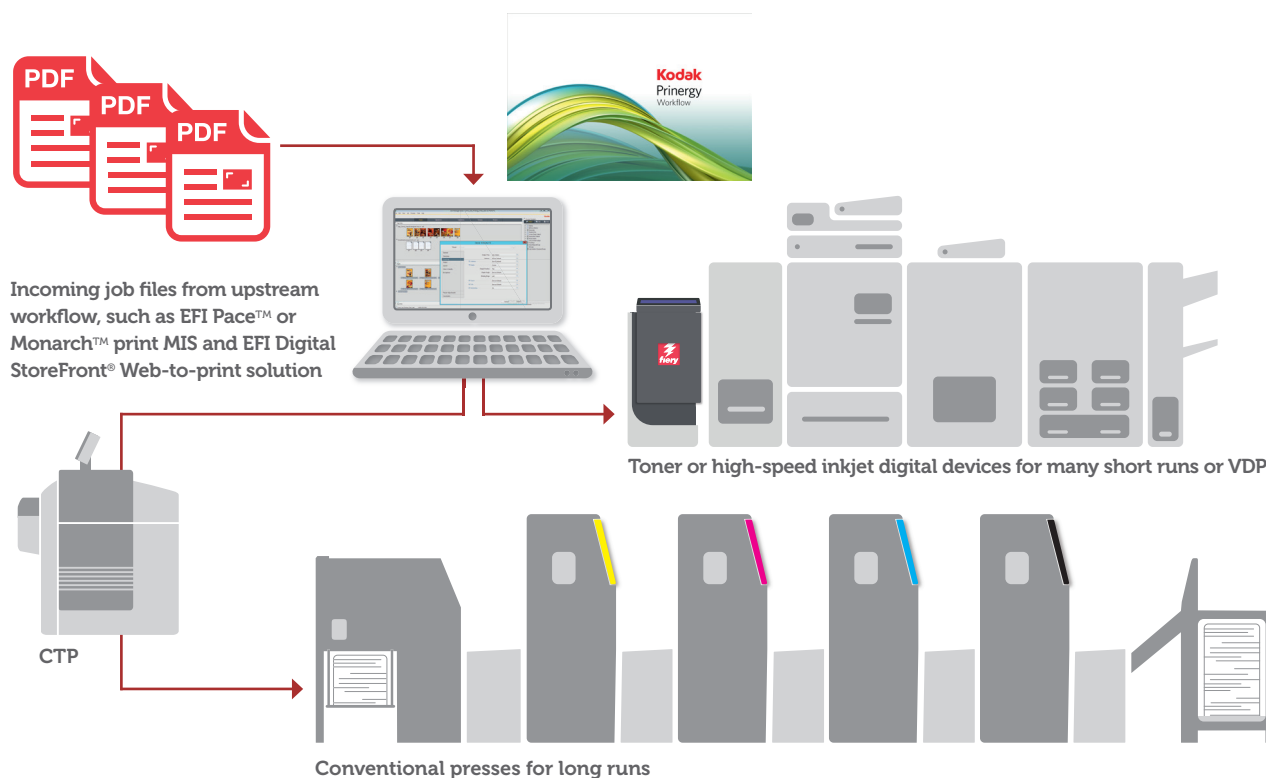


# Kodak Prinergy with Fiery digital print servers

Bring the best of both worlds together — digital and offset — with your favorite prepress workflow.



Kodak Prinergy® workflow integration with EFI™ Fiery® digital print servers provides flexibility and efficiency, with centralised control to let you easily direct jobs to the appropriate digital or conventional presses. Manage jobs for multiple devices and leverage your favorite prepress workflows to automate production for all job sizes and run lengths — all from a single

operator station and without ever leaving the Prinergy user interface, allowing you to reduce training and touch points. Most important, the integration helps you meet the increasing demand for short-run jobs, faster turnaround times, and value-added services that only digital presses in integrated workflows can achieve.

## Integration highlights

INTEGRATION FEATURES		DESCRIPTION
<b>Integrated workflows with Fiery servers</b>		
<b>EFI Fiery Driven™ digital presses</b>	The best performance, usability, colour, and integration for digital presses	<ul style="list-style-type: none"> <li>The widest selection of digital engines with industry-leading Fiery technology</li> <li>CIP4 JDF-certified to maximise interoperability</li> <li>Integration ready for EFI Productivity Suites (EFI Web-to-print and print MISs)</li> </ul>
<b>Hybrid workflow</b>	Control digital and conventional from a single user interface	<ul style="list-style-type: none"> <li>Ability to route jobs to the most cost-effective devices</li> <li>Shares the same job ticket and content for multiple devices, ensuring prepress consistency</li> </ul>
<b>Digital applications</b>	Benefit more from hybrid workflow with digital presses	<ul style="list-style-type: none"> <li>Quick initial short run</li> <li>Short-run reprints for long-run jobs</li> <li>Variable data printing</li> <li>Quick digital proofs</li> </ul>
<b>Automate with easy setup and base integration</b>		
<b>Configuration wizard and template-based automation</b>	Easy setup and powerful automation template creation	<ul style="list-style-type: none"> <li>Automatically acquire printer capabilities for Prinergy to submit jobs to Fiery servers with colour, layout, and finishing options</li> <li>Select Fiery Server Presets or Fiery Virtual Printers directly from Prinergy with complete Fiery feature access</li> </ul>
<b>Dynamic job submission</b>	Flexible and convenient way to route jobs to digital presses	<ul style="list-style-type: none"> <li>Simply convert conventional jobs from Prinergy Workshop for Fiery Driven digital presses with number of copies, specified media, and more*</li> </ul>
<b>Optimise cost and production tracking</b>		
<b>Job and device status tracking</b>	Bidirectional job and production status update visibility	<ul style="list-style-type: none"> <li>Bidirectional communication between Prinergy and Fiery Driven presses to check job progress and device status in real time for efficient production with the browser-based Prinergy Device Track*</li> </ul>
<b>Job rerouting and resubmission</b>	Production scenario changes to optimise cost	<ul style="list-style-type: none"> <li>Reroute jobs to a different digital press after submission</li> <li>Resubmit or change settings of jobs already submitted to Fiery servers right from Prinergy*</li> </ul>
<b>Enable advanced production automation</b>		
<b>Makeready automation</b>	Integrated media, colour, and layout workflows	<ul style="list-style-type: none"> <li>Dynamically define mixed media, mixed colour mode, and mixed plexing with page range, inserts, and covers, directly from the Prinergy* interface</li> <li>Specify collation and slip sheets from Prinergy to streamline postproduction processes*</li> </ul>
<b>Inline finishing automation</b>	Eliminate touch points by utilising inline finishing capabilities	<ul style="list-style-type: none"> <li>Prinergy automatically recognises what inline finishing devices are attached to Fiery Driven presses*</li> <li>Configure binding, stapling, punching, and folding options at from the Prinergy* interface</li> </ul>

\*Supported with Prinergy 8.1. With Prinergy 6, 7, or 8.0, partially supported or requires template-based automation.

## Hardware and software requirements and compatibility

### EFI Fiery digital print servers

- Supported Fiery Driven digital presses:
  - Fiery System 9R2 or higher
  - Fiery JDF-enabled digital presses listed at [www.efi.com/fjdf](http://www.efi.com/fjdf)

### Kodak Prinergy

- Prinergy Workflow 5.2, 6, 7, 8, and 8.1
- Prinergy Digital Press Management
- Optional: Digital Managed Connection (for additional digital printer connection)

## EFI fuels success.

We develop breakthrough technologies for the manufacturing of signage, packaging, textiles, ceramic tiles, and personalised documents, with a wide range of printers, inks, digital front ends, and a comprehensive business and production workflow suite that transforms and streamlines the entire production process, increasing your competitiveness and boosting productivity. Visit [www.efi.com](http://www.efi.com) or call 0808 101 3484 (UK only) or +44 (0)1246 298000 for more information.



Nothing herein should be construed as a warranty in addition to the express warranty statement provided with EFI products and services.

The APPS logo, AutoCal, Auto-Count, Balance, BESTColor, BioVu, BioWare, ColorPASS, Colorproof, ColorWise, Command WorkStation, CopyNet, Cretachrom, Cretaprint, the Cretaprint logo, Cretaprinter, Cretaroller, Digital StoreFront, DirectSmile, DocBuilder, DocBuilder Pro, DockNet, DocStream, DSFdesign Studio, Dynamic Wedge, EDOX, EFI, the EFI logo, Electronics For Imaging, Entrac, EPCount, EPPhoto, EPRegister, EPStatus, Estimate, ExpressPay, FabriVU, Fast-4, Fiery, the Fiery logo, Fiery Driven, the Fiery Driven logo, Fiery JobFlow, Fiery JobMaster, Fiery Link, Fiery Navigator, Fiery Prints, the Fiery Prints logo, Fiery Spark, FreeForm, Hagen, InkIntensity, Inkware, Jetrion, the Jetrion logo, LapNet, Logic, Metrix, MicroPress, MiniNet, Monarch, OneFlow, Pace, Pegasus, Pegasus Vision, PhotoXposure, PressVu, PrintCafe, PrinterSite, PrintFlow, PrintMe, the PrintMe logo, PrintSmith, PrintSmith Site, PrintStream, Print to Win, Prograph, PSI, PSI Flexo, Radius, Remoteproof, RIPchips, RIP-While-Print, Screenproof, SendMe, Sincolor, Splash, Spot-On, TrackNet, UltraPress, UltraTex, UltraVu, UV Series 50, VisualCal, VUTEK, the VUTEK logo, and WebTools are trademarks of Electronics For Imaging, Inc. and/or its wholly owned subsidiaries in the U.S. and/or certain other countries.

All other terms and product names may be trademarks or registered trademarks of their respective owners, and are hereby acknowledged.