

# How-To:

## Imposition of a Personalized Postcard



# How-To: Imposition of a Personalized Postcard

## Feature Overview

Efficiently driving complex VDP jobs in a digital print requires support for multiple records to ensure interoperability.

Fiery Impose reduces the complexity associated with variable data printing (VDP) jobs for one-to-one communications. With Fiery Impose, variable data jobs can be easily imposed in specific sequences to produce a variety of applications and materials, including booklets, books, postcards, coupons and business cards.

## Customer Benefits

- Folds seamlessly into existing PDF-based prepress operations, enabling a single common PDF print production workflow for all job types.
- Easier to use with a visual illustration of cached, reusable elements and easy identification of VDP jobs.
- Increases productivity with support of user's existing workflow.
- Reduces training costs. With Fiery Impose a VDP job is handled as if it were a regular job.
- Reduces waste by including raster preview and sample proof printing.

## Objectives of Exercise

- Use Fiery Impose to prepare a postcard file with a 2-up multi-record layout.

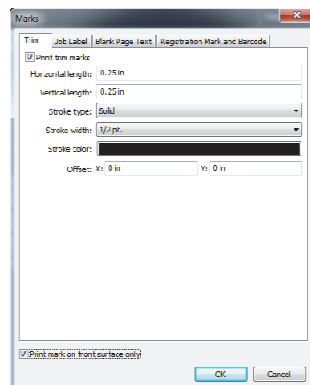
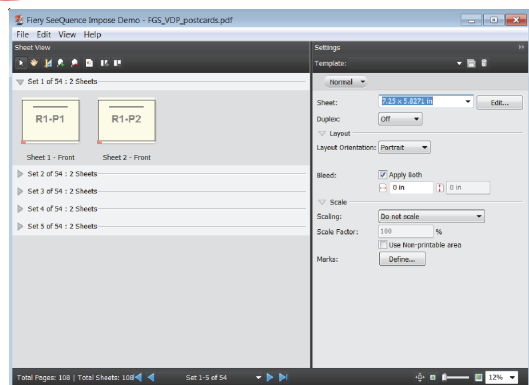
## Additional Resources

If you would like to learn more about Fiery product features, EFI has created interactive online courses designed to enhance Fiery product knowledge and help increase performance. For a complete list of the online courses we offer, go to the [Fiery eLearning](#) web page.

## Before you begin

- Have Fiery Command WorkStation 5.5 or above opened and connected to at least one Fiery server, running Fiery System Fiery FS150 Pro or above.
- Activate the Fiery Impose license on the Command WorkStation client or attach the Fiery Impose Dongle to the Command WorkStation client.
- Place the sample file folder: **VDP\_postcards** in the Fiery Held queue. Drag and drop the file to the Command WorkStation Held queue or use the Command WorkStation Import menu option.
- Ensure the printer and Fiery have been calibrated before printing any output.

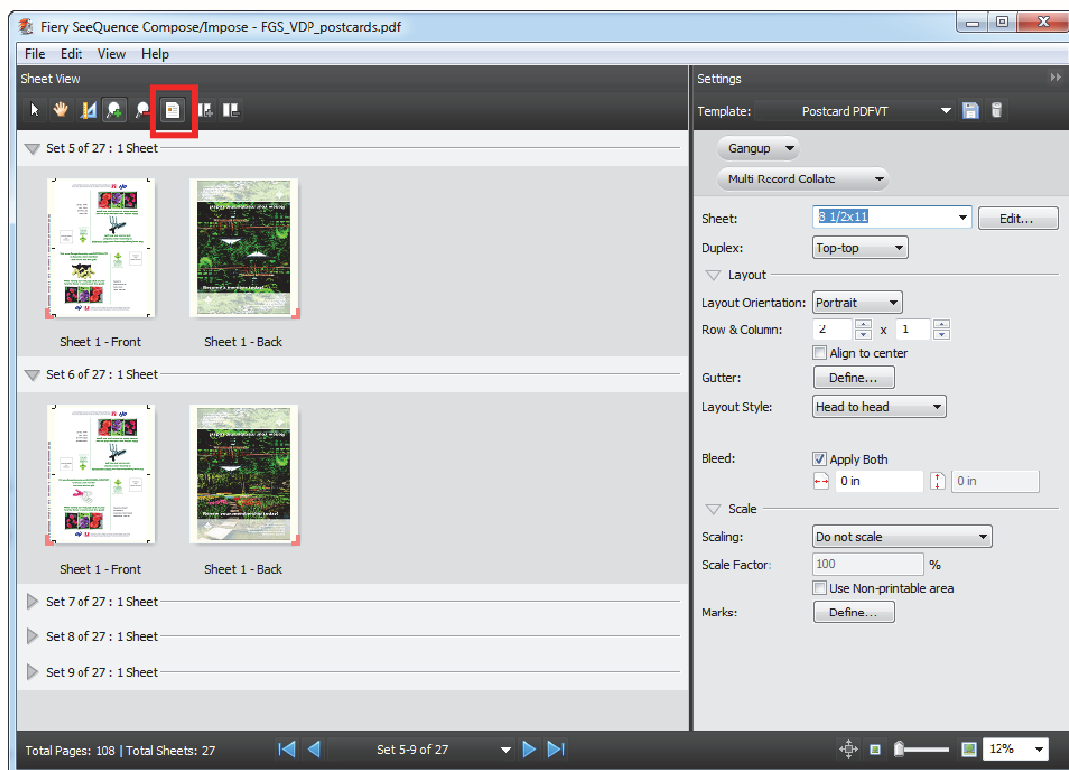
## How-To: Imposition of a Personalized Postcard



### Imposing the Variable document

1. Select the file **FGS\_VDP\_postcards\_Global\_Graphics\_process\_first.zip** in the Held queue, right click and select Process and Hold.
2. In the Device Center under the Resources tab select the VDP Resources, and click on the arrow next to Interpreter. Your VDP images are stored for your document.
3. Select the file **FGS\_VDP\_postcards\_output.zip** in the Command WorkStation Held queue, right-click and select **Impose** from the pop-out menu or select the **Impose** icon from the Command WorkStation toolbar if it was previously added.
4. By default the pages will be displayed as wireframe previews when imposing a variable data job.
5. In the Settings pane, select **Gangup** for the product intent.
6. Below Gangup, select **Multi-Record Collate** from the dropdown menu.
7. Select **8 1/2x11** or **A4** for the **Sheet**.
8. Select **Top-top** for **Duplex** (Note the Duplex options will vary with device).
9. Select **Portrait** for **Layout Orientation**.
10. Set the **Row & Column** to **2 Rows** and **1 Column**.
11. Select **Head to head** for the **Layout Style**.
12. In the Marks section, Select the **Define...** button.
13. On the **Trim** tab, set the following options.
  - a. Check **Print trim Marks** Box.
  - b. Horizontal and Vertical length: **0.25 inches** or **6.35 mm**
  - c. Stroke Type: **Solid**
  - d. Stroke width: **1/2 Pt**
  - e. Stroke Color: **Black**
14. Select the **Job Label** tab and set the following options.
  - a. Check Print Job Label. This will automatically enable Job Name, Sheet Info and Date & Time.
  - b. Position: **Bottom Left**
  - c. Orientation: **Vertical**
15. Check to enable **Print mark on front surface only** and **OK** to close.

## How-To: Imposition of a Personalized Postcard



## Viewing the records in EFI Impose

1. Select the **Toggle Sheet Content** icon in the Toolbar to preview the VDP Imposition. The **Imposition** preview will process the first 5 records to generate the preview.
2. In the layout area, scroll through Sets and expand each of the first five sets to preview the results. Each set represents the gangup output of two records.
3. Select the save icon next to **Template** to save this new template for future use.
4. Enter a name for the Imposition layout. This will enable it to be applied quickly to other jobs. It can also be selected and used within Job Properties, Hot Folders and Virtual Printers. Select **OK**.
5. Select **Exit** from the File menu or select the red **X** located in the upper right corner.
6. Select **Save as a regular impose job**, accept the default name or enter a new name. Select **Yes**.
7. Right-click on the job and select **Print** icon print the imposed document.



# EFI fuels success.

From Fiery to super wide inkjet, from the lowest cost per label to the most automated business processes, EFI has everything your company needs to succeed. Visit [www.efi.com](http://www.efi.com) or call 650-357-3500 for more information.



The APPS logo, AutoCal, Auto-Count, Balance, Best, the Best logo, BESTColor, BioVu, BioWare, ColorPASS, Colorproof, ColorWise, Command WorkStation, CopyNet, Cretachrom, Cretaprint, the Cretaprint logo, Cretaprinter, Cretaroller, DockNet, Digital StoreFront, DocBuilder, DocBuilder Pro, DocStream, DSFdesign Studio, Dynamic Wedge, EDOX, EFI, the EFI logo, Electronics For Imaging, Entrac, EPCount, EPPPhoto, EPRegister, EPStatus, Estimate, ExpressPay, Fabrivu, Fast-4, Fiery, the Fiery logo, Fiery Driven, the Fiery Driven logo, Fiery JobFlow, Fiery JobMaster, Fiery Link, Fiery Prints, the Fiery Prints logo, Fiery Spark, FreeForm, Hagen, Inkintensity, Inkware, Jetrion, the Jetrion logo, LapNet, Logic, MiniNet, Monarch, MicroPress, OneFlow, Pace, PhotoXposure, Printcafe, PressVu, PrinterSite, PrintFlow, PrintMe, the PrintMe logo, PrintSmith, PrintSmith Site, Printstream, Print to Win, Prograph, PSI, PSI Flexo, Radius, Rastek, the Rastek logo, Remoteproof, RIPChips, RIP-While-Print, Screenproof, SendMe, Sincolor, Splash, Spot-On, TrackNet, UltraPress, Ultraflex, UltraVu, UV Series 50, VisualCal, VUTEK, the VUTEK logo, and WebTools are trademarks of Electronics For Imaging, Inc. and/or its wholly owned subsidiaries in the U.S. and/or certain other countries.