

Fiery FS200 Pro & Fiery FS200

What's New Product Guide



This document represents the feature set typically included in Fiery® print servers. Actual feature set included may vary by specific Fiery models, as some features may not be supported due to specific project implementation characteristics or regional requirements. For information on a specific Fiery model's feature set, refer to that model's feature matrix or ask your Fiery vendor. Nothing herein should be construed as a warranty in addition to the express warranty statements provided with EFI products and services.

LAST UPDATED:
July 10, 2015

Table of Contents

Introduction	5
New Features	5
Productivity	6
HyperRIP enhancements	6
Auto-detect Composite Overprint	9
Enhanced support for offline finishing	10
Print range support for Mixed Media	11
Fiery JobFlow Base	11
Increased maximum number of jobs in Printed queue	12
Color	13
Enhanced gradient smoothing	13
PANTONE PLUS library updates	13
Fiery Graphic Arts Package, Premium Edition and Fiery Productivity Package enhancements	13
Usability	18
Fiery Command WorkStation v5.7	18
Shrink to fit enhancement	19
Fiery Impose enhancements	19
Fiery JobMaster enhancements	21
Extended language support	24
Integration	25
Fiery JDF v1.4	25
Fiery API	25
Windows 8.1 operating system for external Fiery servers	26
Debian 7 operating system for embedded Fiery servers	26

Introduction

The Fiery® FS200/FS200 Pro system is the most innovative, scalable and integrated digital front end (DFE) for digital print engines, ensuring customers get the highest return on their investment. The new features provide substantial gains in productivity, deliver accurate and amazing color, include impressive improvements in ease of use, and enhance integration that will help commercial and digital printers reduce costs and improve service.

Fiery FS200 is available for embedded Fiery servers, and Fiery FS200 Pro is for external Fiery servers.

New Features

Productivity	Color/Image Quality	Usability	Integration
<p>HyperRIP enhancements:</p> <ul style="list-style-type: none"> • HyperRIP Mode for Multiple Jobs • Rush RIP • PDF/VT support in single job mode <p>Auto-detect Composite Overprint</p> <p>Enhanced support for offline finishing</p> <p>Print range support for Mixed Media</p> <p>Fiery JobFlow Base</p> <p>Increased maximum number of jobs in Printed queue</p>	<p>Enhanced gradient smoothing</p> <p>PANTONE® PLUS library updates</p> <p>Fiery Graphic Arts Package, Premium Edition and Fiery Productivity Package enhancements</p> <ul style="list-style-type: none"> • ImageViewer enhancements • Control Bar Builder • APPE Postflight report 	<p>Fiery Command WorkStation® 5.7</p> <ul style="list-style-type: none"> • Filtered View Tabs • Define date range • Job Number <p>Fiery Impose 4.7</p> <ul style="list-style-type: none"> • User Defined Finish • Size workflow automation • Gangup finish-edge selection <p>Fiery JobMaster™ 4.7</p> <ul style="list-style-type: none"> • Convert to Grayscale • Auto Tabs • Advance Page Numbering <p>Fiery Compose 4.7</p> <ul style="list-style-type: none"> • Convert to Grayscale <p>Shrink to Fit enhancement</p> <p>Expanded language support</p>	<p>Fiery job description format (JDF) enhancements</p> <p>Fiery API</p> <p>Windows® 8.1 OS for external Fiery servers</p> <p>Debian 7 OS for embedded Fiery servers</p>

* Only available on Fiery QX¹⁰⁰ external servers

Note: Features vary by print engine model; please refer to the individual product datasheet or feature matrix to find out exactly which features are available.

Productivity

HyperRIP enhancements

Fiery servers are known for being the fastest RIPs in the market. Fiery HyperRIP in Fiery FS200 Pro makes Fiery QX¹⁰⁰ servers even faster.

With this new HyperRIP technology, the print engine starts printing as soon as possible. The Fiery DFE keeps up with feeding data to the engine for maximum engine utilization and profit.

Enhancements in FS200 Pro include:

- HyperRIP Mode for Multiple Jobs
- Rush RIP
- PDF/VT support in single job mode

HyperRIP Mode for Multiple Jobs

Fiery HyperRIP on Fiery QX¹⁰⁰ external servers, based on the Fiery FS200 Pro system software, helps achieve uninterrupted production and expands its performance benefits to more print environments by offering a new mode of parallel job processing. When customers select the mode that best fits their environment, HyperRIP can process jobs up to 55% faster compared to a Fiery server without HyperRIP. The two modes available are:

1. Single job

This is the traditional HyperRIP functionality introduced in Fiery FS100 Pro software. It allows the Fiery server to partition a single job into up to four logical parts for parallel processing of pages in that job.

If the server is primarily printing long jobs, this mode provides the best performance.

Single job mode is ideal when printing long, multiple-page jobs because HyperRIP processes those jobs faster to make the Fiery server available to process upcoming jobs.

The screenshot shows a software interface titled "Fiery Configure module". Below the title is a section labeled "HyperRIP Mode". There are two radio button options. The first option is "Multiple jobs (best for short jobs)" with a description: "Choose this setting to process the maximum amount of jobs simultaneously. This mode is optimized towards printing many small jobs in the fastest possible time, while maintaining job order." The second option is "Single job (best for longer jobs)" which is selected by default, indicated by a filled radio button. Its description is: "Choose this setting to process individual jobs as fast as possible, by processing multiple pages of the same job in parallel. If the server is primarily printing long jobs or RIPping jobs one at a time, this mode provides the best performance."

HyperRIP modes are server settings found in the Fiery Configure module under the RIP selection. The single-job mode is selected by default.

File formats supported by HyperRIP in single job mode

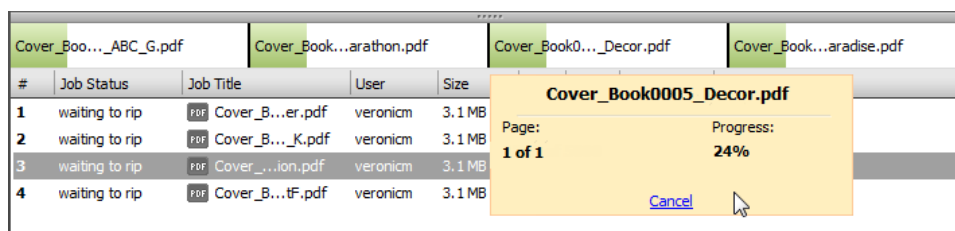
This table lists the file formats supported by single job mode and limitations with some workflows and print settings. Once the Fiery server determines a file is not eligible for HyperRIP, it will route the job through the single RIP path.

PDF Type	Plain	Duplex	XObjects / Form Caching	Mixed Media	Control Bar	Post-flight	Print range	Imposition	Define Record Length	Direct Queue
CPSI workflow										
PDF	Yes	Yes	Yes	Yes	Yes	No	No	No	No	Yes
PS	Yes	Yes	Yes	Yes	Yes	No	No	No	No	No
QuickDoc Merge	Yes	Yes	Yes	No	Yes	No	No	No	No	No
PDF/VT	Yes	Yes	Yes	Yes	Yes	No	No	No	No	No
PPML	Yes	Yes	Yes	No	Yes	No	No	No	No	No
VPS	No	No	No	No	No	No	No	No	No	No
VIPP	No	No	No	No	No	No	No	No	No	No
FreeForm	No	No	No	No	No	No	No	No	No	No
TIF	No	No	No	No	No	No	No	No	No	No
EPS	No	No	No	No	No	No	No	No	No	No
APPE workflow										
PDF	Yes	Yes	Yes	Yes	No	No	Yes	No	No	Yes
PDF/VT	Yes	Yes	Yes	Yes	No	No	No	No	No	No
PCL Workflow										
PCL	No	No	No	No	No	No	No	No	No	No

2. Multiple jobs

This new mode allows the server to RIP up to four jobs at the same time to print many jobs in the fastest possible time.

The multiple jobs mode is ideal when dealing with numerous short jobs such as book covers or flyers or when a long job is being processed while other shorter jobs need to start printing.



The Fiery Command WorkStation shows multiple jobs processing in parallel, with individual process indicators and the ability to individually cancel RIPping jobs if necessary.


Jobs processed in this mode will print in the order they finished RIPping, meaning that smaller or shorter jobs will print before longer or bigger ones. If maintaining the print job order is important, this mode is compatible with the Sequential Print feature that requires jobs to output in the same order they were submitted to the print queue. Sequential Print is a server setting that is enabled in the Fiery Configure module.

Some file formats are not supported under this mode and will be processed using a single RIP path. Those are: PPML, VDP, VIPP, PCL and Freeform.

Rush RIP

Rush RIP is a unique Fiery feature that works in combination with the Fiery HyperRIP multiple jobs mode and therefore it is only available for Fiery QX¹⁰⁰ servers based on Fiery FS200 Pro system software.

Rush RIP offers the ability to immediately RIP a single job without interrupting other currently RIPping jobs. This happens when all four Fiery RIPs are busy processing jobs. The Fiery server makes a fifth RIP available immediately upon request to process the rush job at the same time other jobs are processing. If yet another job is sent to RIP as a Rush RIP job, and all five RIPs are busy, the job will be processed as soon as any of the five RIPs is available.

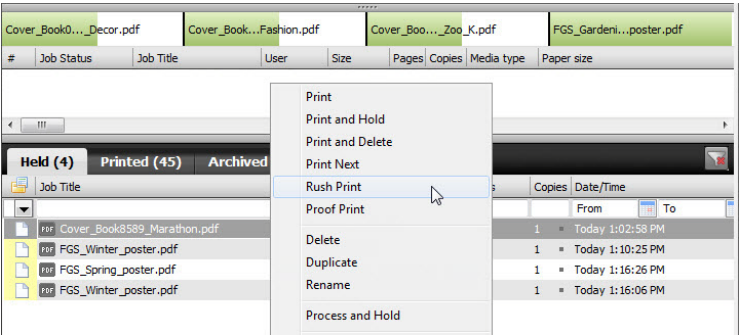
Cover_B...ecor.pdf		Cover_Bo...ion.pdf	Cover_B...oo_K.pdf	Cover_Boo...nter.pdf	Cover_B...BC_G.pdf			
#	Job Status	Job Title	User	Size	Pages	Copies	Media type	Paper size
1	waiting to rip	 FGS_Gar...er.pdf	veronim	2.5 MB	1	1	Plain	11x17 SEF

The Fiery server makes a fifth RIP available immediately upon request to process the rush job at the same time other jobs are processing.

Operators activate Rush RIP when selecting the following actions from the right-click menu on Held Jobs:

- Rush Print**

When selecting Rush Print, the rushed job is sent to the top of the "waiting to RIP" queue. Once a Rush Print job finishes RIPping, it will interrupt a currently printing job and start printing.



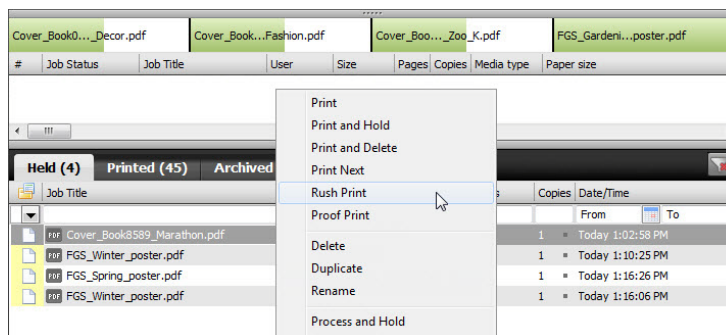
Rush RIP activates when selecting the Rush Print action from the right-click menu on held jobs

• Rush Process and Hold

When selecting “Rush Process and Hold,” the job goes back to the Held queue as a processed job.

Rush RIP is a great print management tool for high-end production environments since operators gain even more control at the print queue by:

- Starting to process an urgent job without cancelling jobs currently being processed or having to wait for those jobs to finish processing
- Being able to preview jobs quickly while other jobs are processing



Rush RIP activates when selecting the Rush Print action selection from the right-click menu on held jobs.

PDF/VT support

HyperRIP in single job mode now supports PDF/VT file format in both CPSI and APPE processing paths enabling variable data printing files to take advantage of the blazing processing speeds offered by Fiery QX¹⁰⁰ servers.

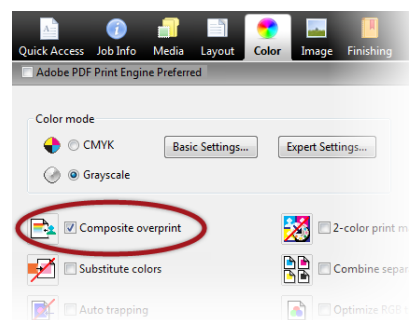
HyperRIP can process PDF/VT jobs 55% faster than Fiery servers without HyperRIP.

Auto-detect Composite Overprint

A smart way to ensure that all jobs print with the correct overprinting and transparency effects is to enable Composite Overprint in Job Properties for all jobs going to print. With this selected, all pages are processed for overprinting and all jobs print correctly.

This processing mode can slow down the RIP performance for jobs that don't require this extra treatment. A unique Fiery feature called Auto-detect Composite Overprint resolves this issue and keeps the performance of the Fiery server high.

Auto-detect Composite Overprint automatically detects whether or not a job needs composite overprinting and processes only those jobs that contain overprints with the extra processing. With this new feature, users don't have to worry about whether or not Composite Overprint is turned on or not. They can just leave it on all the time without slowing down the DFE performance because it speeds up the throughput of jobs that don't contain overprint elements — even when Composite Overprint is enabled.



Composite overprint setting in Job Properties

Documents that are RGB-only PDFs, commonly used in the photobook industry, and CMYK documents that don't contain overprints, can gain up to 15% in processing performance. This performance improvement is guaranteed in Fiery external servers since Composite Overprint is enabled as a default setting. For Fiery embedded servers, the Composite Overprint setting is available and turned off by default.

Enhanced support for offline finishing

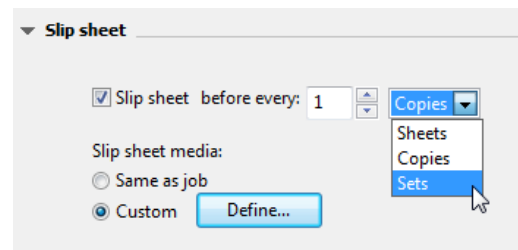
Fiery FS200 and FS200 Pro servers offer more flexibility in printing environments by adding three settings in Job Properties that define online finishing options on a per-job basis.

Slip sheet

The slip sheet setting enables users to inject blank or preprinted sheets in between sets, or within sets as separator sheets. The slip sheet is typically pulled from a tray loaded with different media to make it easier for operators to see the desired breaks in the job. This feature also handles interleaving of various media including transparencies.

Operators can choose from these slip sheet boundary options:

- **Sheets** – inserts a sheet before N sheets
- **Copies** – inserts a sheet before N copies
- **Sets** – inserts a sheet before every N variable data printing (VDP) records, subsets, chapters or uncollated copies (e.g. 10 copies of page 1) of a job

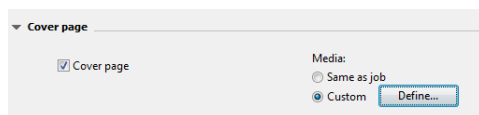


Slip Sheet setting in the Finishing tab of Job Properties.

Job cover page

The job cover page prints a cover page containing job information after the last sheet of the job. This gives users another way to better identify the boundaries of the job and additional job details.

This feature is also available in Fiery Configure in case administrators require all jobs to print with a cover page.



Cover page setting in the Finishing tab of Job Properties.

The job information in the cover page is predefined cannot be modified by the administrator.

Cover Page	
User:	Admin
Document:	4748 pages.pdf
Server:	SERVER-HF1K7UF
Time:	06/08/2015 12:14:47
Pages requested:	42
Sheet Size:	12x18 SEF
Number of Records:	7
Number of Pages per Record:	6
Number of Copies:	1
Number of Printed Sheets:	42
Status:	OK
Notes 1:	
Notes 2:	
Instructions:	

Cover page including useful job information for better identification of the final output.

Offset by sheets, copies or sets

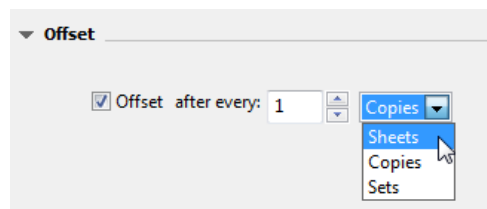
The Offset feature shifts the placement of the output of a job during printing so that the job may be separated into multiple parts more easily after printing.

The output can be offset for copies, sheets or sets:

- **Sheets** – offsets after every N sheets
- **Copies** – offsets after every N copies
- **Sets** – offsets after every N VDP records, subsets, chapters, or uncollated copies (e.g. 10 copies of page 1) of a job

This feature is also available in Fiery Configure in case administrators require all jobs to be offset between jobs.

This feature is only available for print engines that have an offset option at the inline finisher,



Offset setting in the Job Properties' Finishing tab.

Print range support for Mixed Media

Print range support for Mixed Media allows a specified page range to print when Mixed Media has been previously defined. Now customers can use the Print range and Mixed Media features together for more convenience.

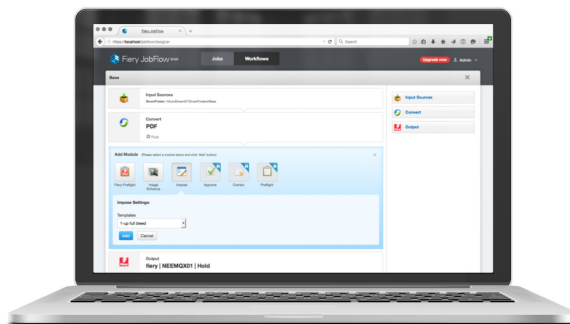
Fiery JobFlow Base

Fiery JobFlow offers automated prepress processes that are easy to set up and use, to minimize rework and boost overall efficiency at the print floor.

The Fiery JobFlow installer is supported for installation on Windows-based Fiery servers running Fiery FS200 Pro software. In addition, Fiery JobFlow can be installed on a supported Windows or Mac client.

After installing the Fiery JobFlow application, the free version, Fiery JobFlow Base, is enabled to configure automated workflows that consist of:

- Job submission from multiple locations (Dropbox, shared folders and FTP)
- PDF conversion
- Fiery Preflight (requires Fiery Graphic Arts Package, Premium Edition)
- Image enhancement
- Document imposition (requires Fiery Impose)



Fiery JobFlow is accessed through a web browser on Mac or Windows clients.

- Job ticketing
- Archiving and output to multiple locations (Dropbox, shared folders, FTP and Fiery external servers)

Users need a paid upgrade license to unlock the full functionality of Fiery JobFlow. The full version of Fiery JobFlow 2.0 contains additional features:

- Rules-based workflows
- Advanced preflight (powered by Enfocus Pitstop)
- PDF correction (powered by Enfocus Pitstop)
- Cloud-based approval workflows

For more information on Fiery JobFlow visit the webpage at efi.com/fieryjobflow.

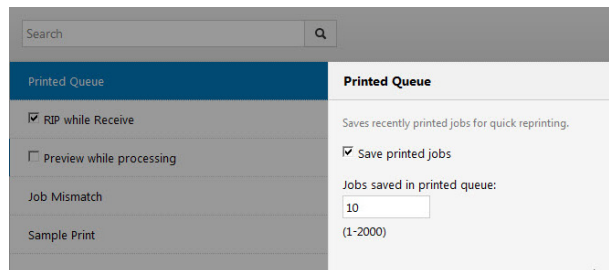
Increased maximum number of jobs in Printed queue

The maximum number of jobs stored in the Printed queue has been increased for easier and faster access of jobs to reprint. The maximum number to jobs varies between embedded and external servers:

- Fiery embedded servers running FS200 software increased from 99 to 1000 jobs
- Fiery external servers running FS200 Pro software increased from 99 to 2000 jobs

The default number of saved jobs is 10 and can be modified using Fiery Configure and Fiery Webtools.

Once the amount of stored jobs reaches the number defined above, the Fiery server starts deleting the jobs in FIFO (first in first out) order.



Printed Queue	Printed Queue
<input checked="" type="checkbox"/> RIP while Receive	Saves recently printed jobs for quick reprinting.
<input type="checkbox"/> Preview while processing	<input checked="" type="checkbox"/> Save printed jobs
Job Mismatch	Jobs saved in printed queue:
Sample Print	10
	(1-2000)

The default number of saved jobs is 10 and can be modified by the administrator

Color

Enhanced gradient smoothing

The Image Smoothing feature uses proprietary Fiery processing for enhanced gradient smoothing. This ensures the highest quality print appearance for color transitions found in design elements such as vignettes or vector gradients by removing objectionable stepping in the print output.

Vignettes and vector gradients are common design elements that typically transition from a dark to a light color in the same hue.

The color transition in these elements may look smooth on the screen but it can present visible bands when printed.

Gradient smoothing is applied when enabling the "Image smoothing" setting in the Fiery driver and Job Properties.

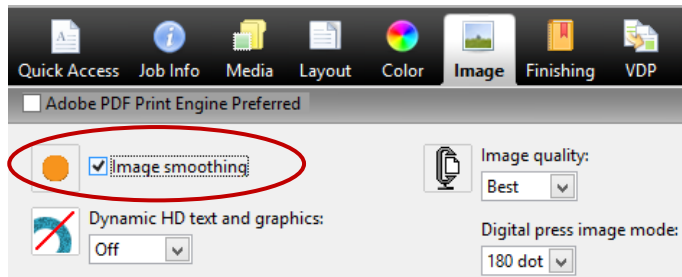
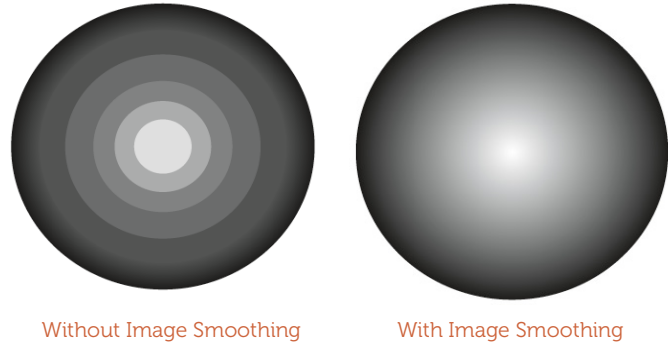


Image smoothing setting in Job Properties and Fiery driver

PANTONE PLUS library updates

Fiery servers deliver up-to-date PANTONE® library support to meet the expectations of demanding color customers. The addition of the PANTONE PLUS SERIES allows users to reproduce even more PANTONE colors accurately including new colorimetric definitions.

The library is located in the Device Center > Resources > Spot Colors in Fiery Command WorkStation.

The full array of PANTONE libraries can be downloaded from <http://download.efi.com/FieryPantone>



Fiery Graphic Arts Package, Premium Edition and Fiery Productivity Package enhancements

The Fiery Graphic Arts Package, Premium Edition for Fiery FS200 Pro systems and the Fiery Productivity Package for the Fiery FS200 systems include enhancements in ImageViewer, Postflight and the new Control Bar Builder.

Fiery ImageViewer enhancements

New features in Fiery ImageViewer deliver more precise control over color curve creation and application while enhancing overall usability.

- Tabular curve edit

This feature is accessible through the new "Edit Curve" button in the Color Adjust window. Tabular curve edit allows to define curves using custom values, or choose pre-populated control points, such as 10% or P2P targets.

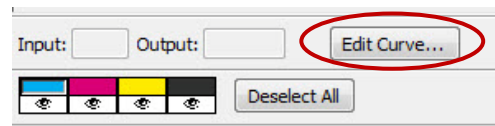
The Import Curve function is within the Tabular curve edit feature. This offers the ability to import third-party curves from applications such as IDEAlliance Curve2™ and newer software.

This enhancement provides a more precise editing of color curves and better control of color edits. It also helps G7 certified environments match G7 tone and gray balance targets using Curve software.

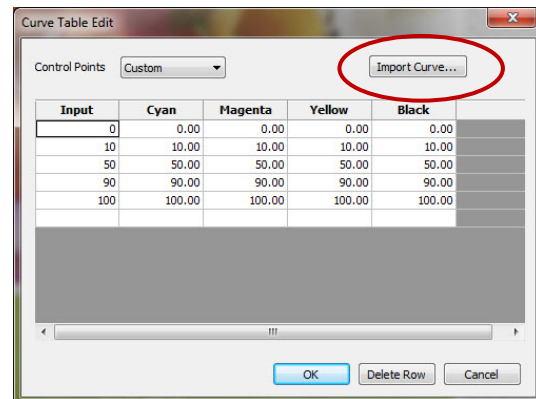
- Apply custom curves per page

ImageViewer enables users to save custom curves as presets, then apply them to a single page, a specific range of pages, or to the entire job.

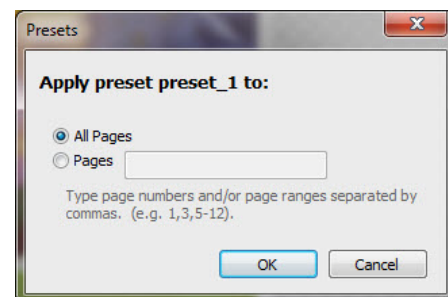
This allows color adjustments for individual pages or an entire job and gives better control over custom settings throughout a job.



The new Edit Curve button in ImageViewer



Edit curves more precisely with tabular curve edit



Choose to apply custom curve presets to desired pages within a job

- Apply ImageViewer curves in Job Properties and Fiery driver

Users can choose to apply custom curves to a job within Job Properties in Fiery Command WorkStation or Fiery driver (accessible in the Color tab). If a user has already saved a custom curve in ImageViewer, it will automatically be populated in the ImageViewer Curves dropdown menu.

A set of predefined curve adjustments are also available for use and don't require the existence of a Fiery Graphic Arts Package, Premium Edition or Fiery Productivity Package license:

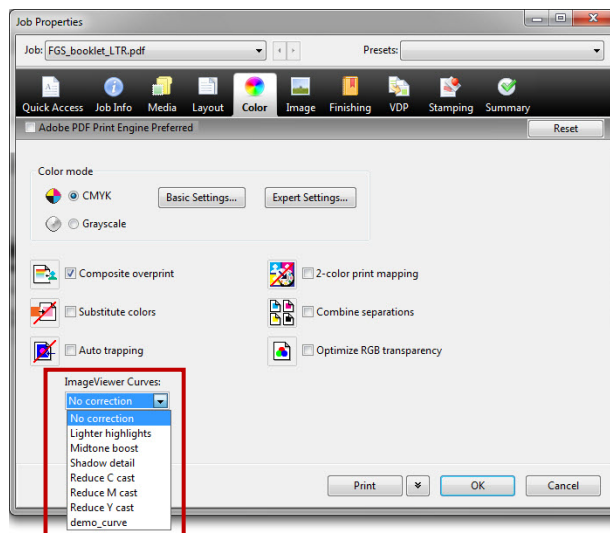
- Lighter highlights
- Midtone boost
- Shadow detail
- Reduce C cast
- Reduce M cast
- Reduce Y cast

This new feature facilitates color matching between similar jobs and allows custom or factory default curve corrections to be applied without needing to open ImageViewer.

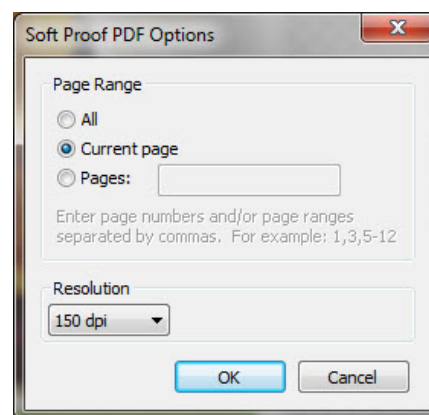
- Simplified softproof

ImageViewer now provides a simplified set of options to create a softproof. Simply specify the resolution (150 or 300dpi) and the specific pages within the job that should be exported as a softproof.

This offers a more efficient creation of softproofs.



Choose from pre-populated curve adjustments or use a custom curve



Simplified options make creating soft proofs more efficient

Control Bar Builder

A control bar is commonly used on press forms and contract proofs to enable color process control.

The Fiery Control Bar is comprised of a color bar and job information to monitor color quality on every printed page.

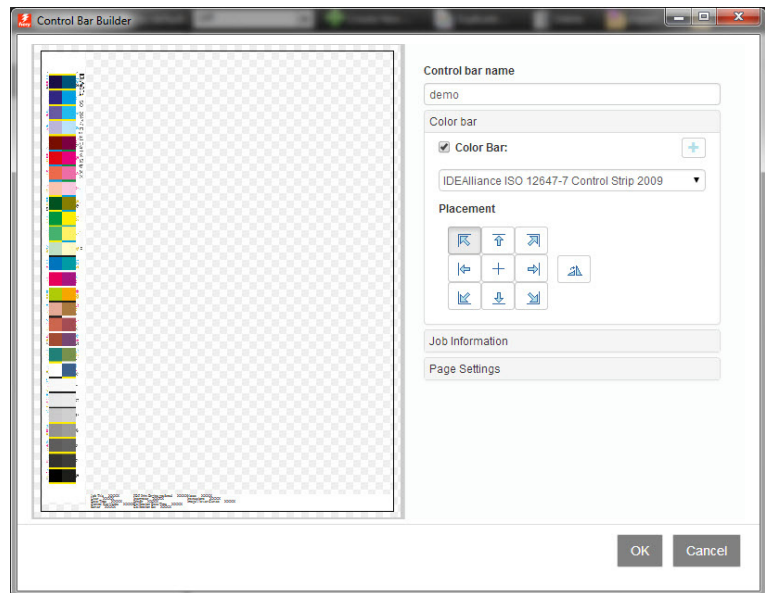
Fiery Control Bar is selected from Job Properties or the Fiery driver, and will print on every sheet of a job.

The new Control Bar Builder has a WYSIWYG interface to design custom control bars. This allows for different color bars or job information depending on the application or intended audience. Each custom control bar can be used across all media sizes, reducing setup time and simplifying the operator's ability to use custom control bars.

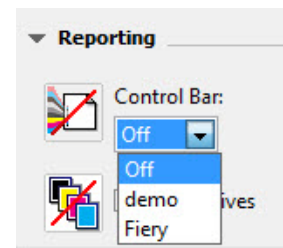
Users can upload a custom color control bar, or customize a control bar from predefined color bars, such as those included with Control Bar Builder: Ugra Fogra-Media Wedge V2.2x, Ugra Fogra-Media Wedge V3.0a, IDEAlliance ISO 12647-7 Control Strip 2009, and the IDEAlliance ISO 12647-7 Control Wedge 2013.

Users can customize font, text size, color, as well as the order of information contained in the bar. The control bar can be placed vertically or horizontally on the sheet and at different locations. The Fiery driver and Job Properties provide a selection of the default and custom control bars created with the Control Bar Builder.

The Control Bar Builder offers more flexibility on control bar placement and content that work across media sizes. Users can design custom control bars for color consistency and quality control of specific jobs or complete production workflows.



Control Bar Builder user interface



Control Bar selection in Job Properties and Fiery driver

APPE Postflight report

The Postflight report lets users produce a color-coded version of the job to indicate the source color space of each element for color print troubleshooting.

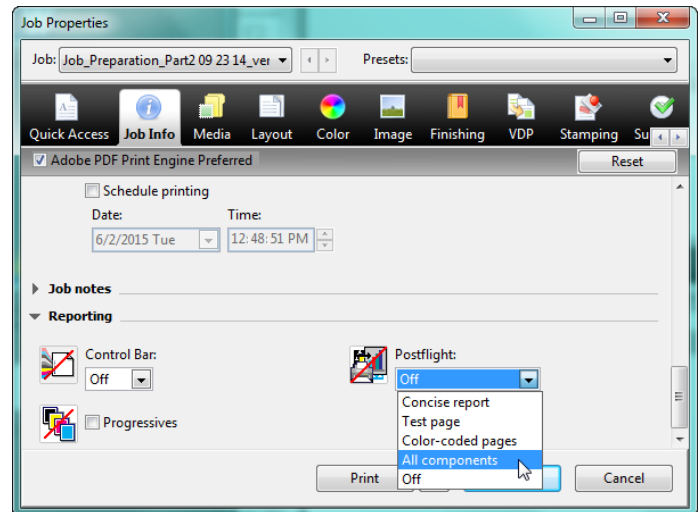
Before Fiery FS200 Pro, the Postflight report always processed PostScript and PDF files through the CPSI processing path. In this workflow, Postflight's color-coded pages worked for a CPSI processing path. But when processing a PDF with the APPE interpreter, the file can include color information that is translated differently for CPSI. For that reason, it is necessary to have a

Postflight feature that supports the native PDF printing path without converting the PDF file to PostScript for CPSI.

APPE Postflight reports the source-color spaces in a PDF that are sent to APPE for processing. APPE Postflight also improves the reporting of missing spot colors by color coding known spot colors in Fiery Spot-On™ differently than the missing spots.

This feature only works on Fiery external servers running FS200 Pro and requires:

- APPE to be enabled in Fiery Configure
- Check the "Use Adobe PDF Print Engine Preferred as default for PDF Jobs"
- Or check the "Adobe PDF Print Engine Preferred" selection in Job Properties



Select Postflight from the Job Info tab in Job Properties and Fiery driver

Usability

Fiery Command WorkStation v5.7

Fiery Command WorkStation v5.7 is part of Fiery Extended Applications v4.3 and was released in April 2015 for free online download at www.efi.com/cws5. It includes the following new features:

- Filtered View Tabs
- Define date range in Filtered Views
- Job Number

Filtered View Tabs

Filtered View Tabs, a new productivity-boosting feature, increases production throughput.

Operators save Filtered View Tabs as additional tabs from the standard Held, Printed and Archived tabs. This helps operators plan and prioritize print production by grouping jobs with similar characteristics and viewing Held and Printed jobs in a single tab.

With Filtered View Tabs, operators store their favorite search criteria in a separate tab that is dynamically refreshed as new jobs come into the Fiery server.

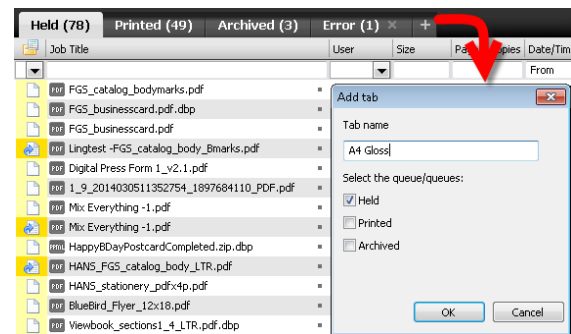
Users can create up to 10 tabs in addition to the standard Held, Printed and Archived tabs.

The feature can be useful in these and other scenarios:

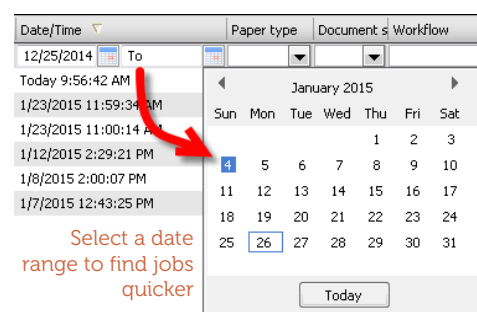
- Create an "Error" tab to list all the jobs with an error Job Status instead of displaying them mixed in with the printed jobs in the Printed tab.
- Create a tab called "Hammermill 105gsm coated" to filter just jobs that are ready to print, matching the media the operator has just loaded.
- An operator has a tab called "Mike" that shows only the jobs under his username in both Held and Printed tabs.

Define date range in Filtered Views

Filtered Views allows users to select a date range in the Date/Time field so they can find print jobs faster and define new Filtered View Tabs.



Filtered View Tabs are added to plan and prioritize print production.



Select a date range to find jobs quicker

Job number

The job number feature assigns a distinct number to jobs on the Fiery server for a quick job identification. The job number can be displayed on the columns of Held, Printed or Archived queues or in the Job Log.

The number assigned is a result of an abbreviation from a unique Job-ID value.

This feature helps distinguish between jobs with the same name.

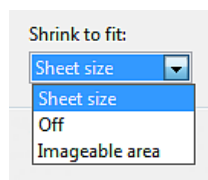
Job Number assigns a distinct number to easily differentiate jobs with the same job title

Held (0)	Printed (97)	Archived (0)	+
Job Title	Job Number	Size	
✓ PS Font Tests	1409	2.1 MB	
✓ PS Font Tests	1408	2.1 MB	
✓ PS Font Tests	1406	2.0 MB	
✓ PS Photo Print Test Job	1404	4.1 MB	
✓ PS Photo Print Test Job	1403	4.0 MB	
✓ PS Photo Print Test Job	1402	4.0 MB	

Shrink to fit enhancement

The “Shrink to fit” setting in the Layout tab of the Fiery driver and Job Properties is used to make sure the entire image on a page fits on the printed sheet. In the past, when selecting this setting for the Gangup and Booklet layout, the image was shrunk to the sheet size, which is usually a larger surface than the printable area because most printers don't print edge-to-edge. As a result, some documents would have image data fall into the non-printable area and the image was lost at the edges of the printed sheet.

Shrink to fit setting options found in the Fiery driver and Job Properties under the Layout tab for Gangup and Booklet styles



This enhancement offers users a choice when selecting “Shrink to fit” from the Fiery driver and Job Properties.

- Sheet size: scales the image to the sheet size of the selected media
- Imageable area: scales the image to the printable area of the sheet

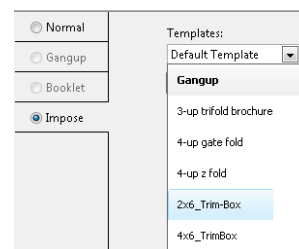
This added flexibility helps users better define Shrink to fit parameters and avoids missing image data from printed output.

Fiery Impose enhancements

User Defined Finish Size workflow automation

The User Defined Finished Size imposition in Fiery Impose honors the trim-box finish option in PDF files. With this enhancement, Fiery FS200 Pro users can create Fiery Impose templates with User Defined Finished Size settings, and use those templates in any job submission method or workflows including Fiery Hot Folders, Virtual Printers, Job Properties and Server Presets.

The Fiery Impose license must be activated at the client and/or at the Fiery FS200 Pro (Windows-based) server when setting up a workflow



Select imposition based on trim box from Fiery Job Properties

with User Defined Finish Size.

The following table explains where the Fiery license (LAC) needs to be activated:

Fiery system version	License Activation		Supported Workflow			
	Server license	Client license	Job Properties	Server Presets	Virtual Printers	Hot Folders
FS200 Pro	✓	✓	S (*1) (*3)	S (*3)	S (*2)	S (*3)
	✓		S (*1)	S	S	N/S
		✓	N/S	N/S	N/S	S (*3)
			N/S	N/S	N/S	N/S
FS200, FS150 Pro and earlier Fiery servers	✓	✓	N/S	N/S	N/S	S (*3)
	✓		N/S	N/S	N/S	N/S
		✓	N/S	N/S	N/S	S (*3)
			N/S	N/S	N/S	N/S
✓ = License required			S = Supported - N/S= Not supported			

(*1): When the User Defined Finished Size template is created on the Fiery server then a Server Preset must be created in order to have access from Job Properties.

(*2): Virtual Printer workflow is only available if the User Defined Finish Size template is created on the Fiery server.

(*3): When Job Properties, Server Presets and Hot Folders workflows based on User Defined Finish Size is set up on a client, these workflows can only be accessed on that client.

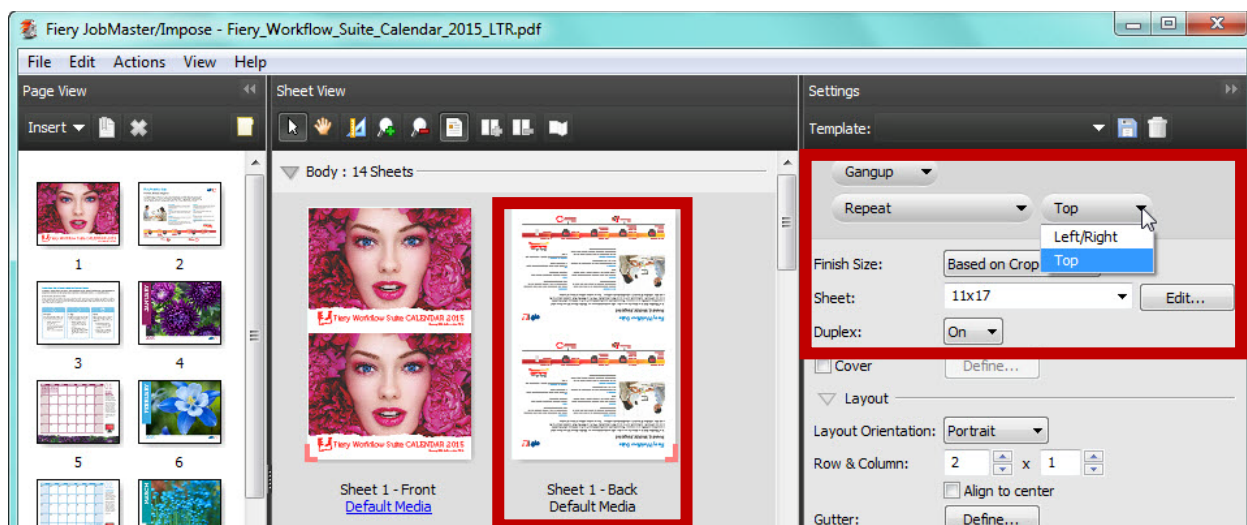
Gangup finish-edge selection

Applications such as wall calendars and some financial statements that are imposed with a top binding finishing, require all back pages of the sheet to rotate 180 degrees in order to show correct page orientation for the finished spread.

Designers could only manually rotate the back page for individual sheets when producing the file to print and this new feature makes this rotation automatic for all back pages in a gangup imposition. Just choose the new "Top" binding edge selection when imposing a job with a duplex gangup-repeat, unique-collate cut or Duplo styles.



Calendars using gangup repeat imposition style and top binding edge



Gangup finish-edge selection is enabled when choosing Gangup, Repeat, and Duplex: On settings. See how the pages in the back of sheet 1 were rotated 180 degrees.

These imposition settings improve operator productivity and throughput when using preset-based workflows such as Hot Folders or Virtual Printers. The settings can be saved as a Fiery Impose template so that operators can automate page rotations for upcoming regular or VDP jobs that require duplex with top finished edge.

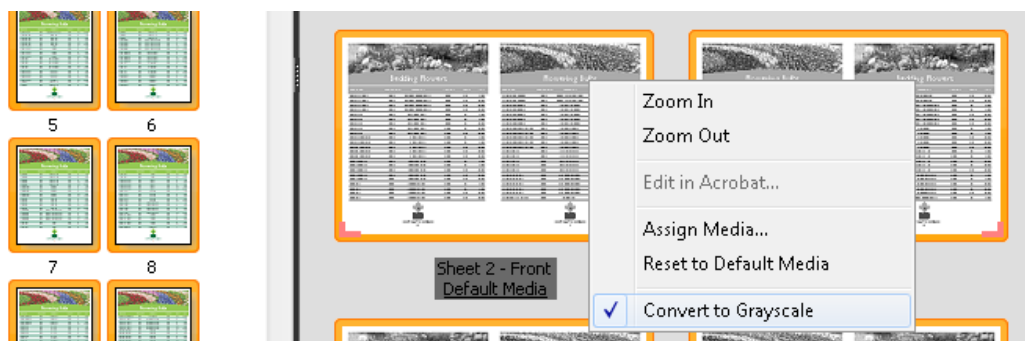
Fiery JobMaster enhancements

Convert to Grayscale

This feature is available on both Fiery Compose and Fiery JobMaster.

Operators can easily specify any page or sheet surface to print in black and white during the makeready stage.

The Convert to Grayscale feature saves on click charges and easily fulfills the designer's intent for a printed piece. Applying grayscale conversion at the sheet level ensures click savings for imposed documents such as booklets or gangups.



Convert to Grayscale takes place either in the Page View or Sheet View panels. Once the selected pages or sheet surfaces are converted, changes are reflected in the Sheet View panel.

The conversion is non-destructive. This means that once the job has been saved back to the Held queue, operators can apply further edits to reverse the conversion if necessary.

This feature is useful in these example scenarios:

- A long manual that is heavy on text has blue hyperlinks throughout the document. The operator can turn all body sheets into grayscale in Sheet View after laying out the booklet to save on clicks.
- A customer wants the back of her business card printed in black and white. The operator selects the back page in Page View panel and converts it to grayscale.

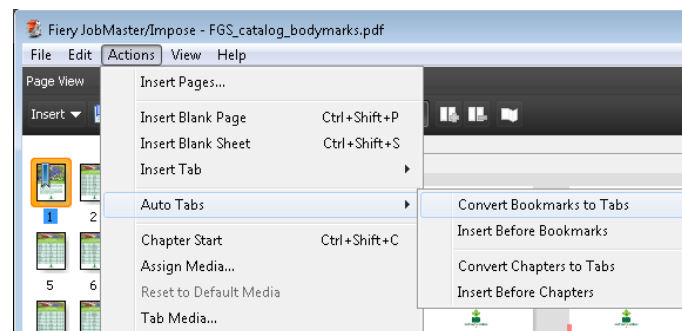
Auto Tabs

The Auto Tabs feature creates tab sheets, places them in the right location and populates the tab ear content automatically by using text from the bookmark links of PDF documents.

It streamlines makeready and reduces errors that can happen during manual assembly of tab jobs.

With Auto Tabs, users can also reduce the time to prepare a tab job from 20 to 50 minutes to less than 5 minutes.

Auto Tabs is especially valuable for long documents that require well-defined chapters or sections, such as training manuals, reports or course packs.



Auto Tabs uses text from bookmark links in the PDF or places tabs automatically at the chapter start page

This feature is useful in these scenarios and more:

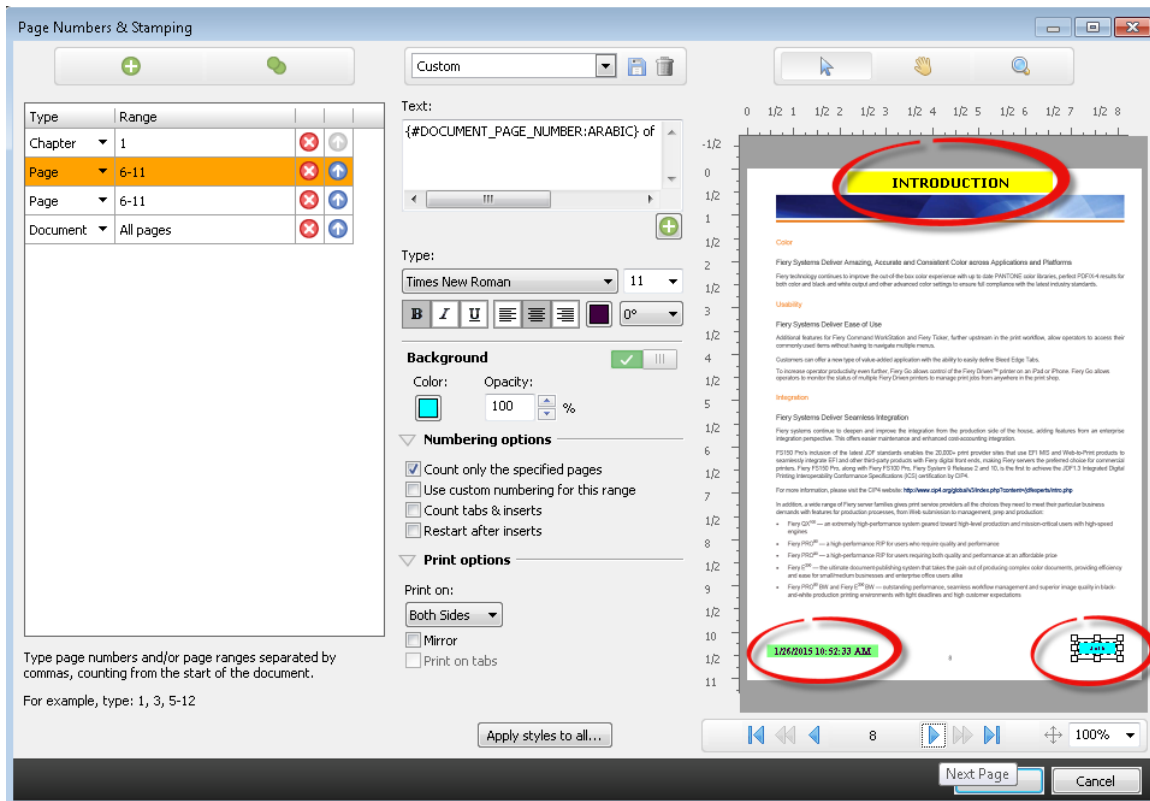
- The print buyer provides a PDF file for each section of a training manual. The operator combines those files into one document using Adobe Acrobat, which merges each section into a single PDF file and automatically creates bookmarks at the beginning of each section. Bookmarks retain the names of their PDF files.
- The print buyer includes all tab information in the PDF print file, rather than creating tab instructions and tab ear content in a separate document.

Advanced Page Numbering

Makeready of long, complex jobs requires the ability to apply different page number sequences or formats to the multiple sections within a document. The expanded page numbering tool in JobMaster includes advanced capabilities to cater to these demands.

Advanced Page Numbering allows operators to create unique numbering sequences for one or multiple sections, using a combination of custom text, formats and macros.

Advanced Page Numbering offers ease of use and flexibility to meet various document numbering requirements in long documents.



More than one page-numbering sequence can be applied to a single page.

Useful scenarios for this feature include:

- A technical manual contains an appendix and a main section, each requiring a different format. An appendix might call for Roman numerals (i, ii, iii), while the main section uses Arabic numerals (1, 2, 3). With Advanced Page Numbering all page numbering formats can be defined at once.
- A job requires restarting page numbering because of inserts and dividers that should not be numbered. Advanced Page Numbering can detect chapter starts automatically to skip and restart numbering.
- Another job needs all pages to display the chapter name on top and the page number on the bottom. Advanced Page Numbering can add both macros to the same page without returning to the native files to add chapter names.

Extended language support

Fiery servers running Fiery FS200 and FS200 Pro system software come localized into two new languages: Korean and Traditional Chinese. These new languages are supported throughout all Fiery user applications and interfaces.

Integration

Fiery JDF v1.4

Fiery JDF allows process automation from job submission to output by integrating print workflow and business management systems. With built-in JDF-based integration support, job information flows through the systems with fewer touchpoints and errors.



Version 1.4 now allows integrated systems to:

- Automatically eject unused tabs to a default or specified tray: this allows an upstream system to specify an output tray for tab kick-out through JDF, enabling advanced tab workflow automation from Web-to-Print or Print MIS systems such as EFI Digital StoreFront and Pace MIS.
- Produce saddle-stitched booklets that require different media for the cover page and the body pages: this provides more control of booklet attributes from upstream systems for automation.
 - Specify media for front and back cover
 - Specify to print both sides, only outside or only inside
 - Color or black and white can be specified separately for cover and body pages



In addition, Fiery JDF is now available for Fiery embedded systems through the [Fiery Productivity Package](#) option for selected Fiery products. This lets more users integrate print workflow and business management systems. Visit the [Fiery JDF supported printers webpage](#) to see the list of Fiery embedded servers that offer Fiery JDF support through the Productivity Package option.

Fiery API

Print workflows are unique to every print business. Fiery application programming interface (API) allows customers and inside developers for print shops to rapidly develop unique apps and tools for specific business needs on a variety of desktop or mobile platforms; including Windows®, Mac OS, iOS and Android — using the development environment of their choice. The RESTful API exposes the Fiery interface and establishes a secure bi-directional connection with Fiery servers, allowing developers to extract job data for custom usage such as cost analysis and optimized scheduling, and submit jobs with basic settings from the customer's existing applications.

- Request job log data on Fiery servers, such as the number of sheets used, media size, and media type for custom accounting and supply tracking needs
- Control certain job actions, such as process, print, and delete a specific job or all jobs on the Fiery servers
- Submit jobs to Fiery servers from an app with a simple command

- Retrieve current status for actions such as printing and errors, and gather real-time printer reports with simple commands
- Access previews of a processed job generated by the Fiery servers for softproofing

Users can find the resources they need to get started at developer.efi.com, including sample codes, API documentation, and how to get an evaluation license for their project.

Fiery Go, the free app for smart phones and tablets, takes advantage of Fiery API and lets users access Fiery servers remotely from their iOS or Android devices. Fiery FS200 and Fiery FS200 Pro servers come with Fiery API, so they're ready to communicate with mobile devices out of the box.



Windows 8.1 operating system for external Fiery servers

Fiery external servers running Fiery FS200 Pro system software keeps customers up to date with support for the latest industry standards and are now based on Windows Embedded 8.1 Pro 64-bit operating system.

Debian 7 operating system for embedded Fiery servers

Fiery embedded servers running Fiery FS200 system software keep support for its operating system up to date and are now based on Linux Debian 7. This updated version of the Linux operating system provides a 64-bit operating system with improved support for security updates.

EFI fuels success.

From Fiery to super wide inkjet, from the lowest cost per label to the most automated business processes, EFI has everything your company needs to succeed. Visit www.efi.com for more information.



The APPS logo, AutoCal, Auto-Count, Balance, Best, the Best logo, BESTColor, BioVu, BioWare, ColorPASS, Colorproof, ColorWise, Command WorkStation, CopyNet, Cretachrom, Cretaprint, the Cretaprint logo, Cretaprinter, Cretaroller, DockNet, Digital StoreFront, DocBuilder, DocBuilder Pro, DocStream, DSFdesign Studio, Dynamic Wedge, EDOX, EFI, the EFI logo, Electronics For Imaging, Entrac, EPCount, EPPhoto, EPRegister, EPStatus, Estimate, ExpressPay, Fabrivid, Fast-4, Fiery, the Fiery logo, Fiery Driven, the Fiery Driven logo, Fiery JobFlow, Fiery JobMaster, Fiery Link, Fiery Prints, the Fiery Prints logo, Fiery Spark, FreeForm, Hagen, Inkintensity, Inkware, Jettrion, the Jettrion logo, LapNet, Logic, MiniNet, Monarch, MicroPress, OneFlow, Pace, PhotoXposure, Printcafe, PressVu, PrinterSite, PrintFlow, PrintMe, the PrintMe logo, PrintSmith, PrintSmith Site, Printstream, Print to Win, Prograph, PSI, PSI Flexo, Radius, Rastek, the Rastek logo, Remoteproof, RIPChips, RIP-While-Print, Screenproof, SendMe, Sincolor, Splash, Spot-On, TrackNet, UltraPress, UltraTex, UltraVu, UV Series 50, VisualCal, VUTEK, the VUTEK logo, and WebTools are trademarks of Electronics For Imaging, Inc. and/or its wholly owned subsidiaries in the U.S. and/or certain other countries.