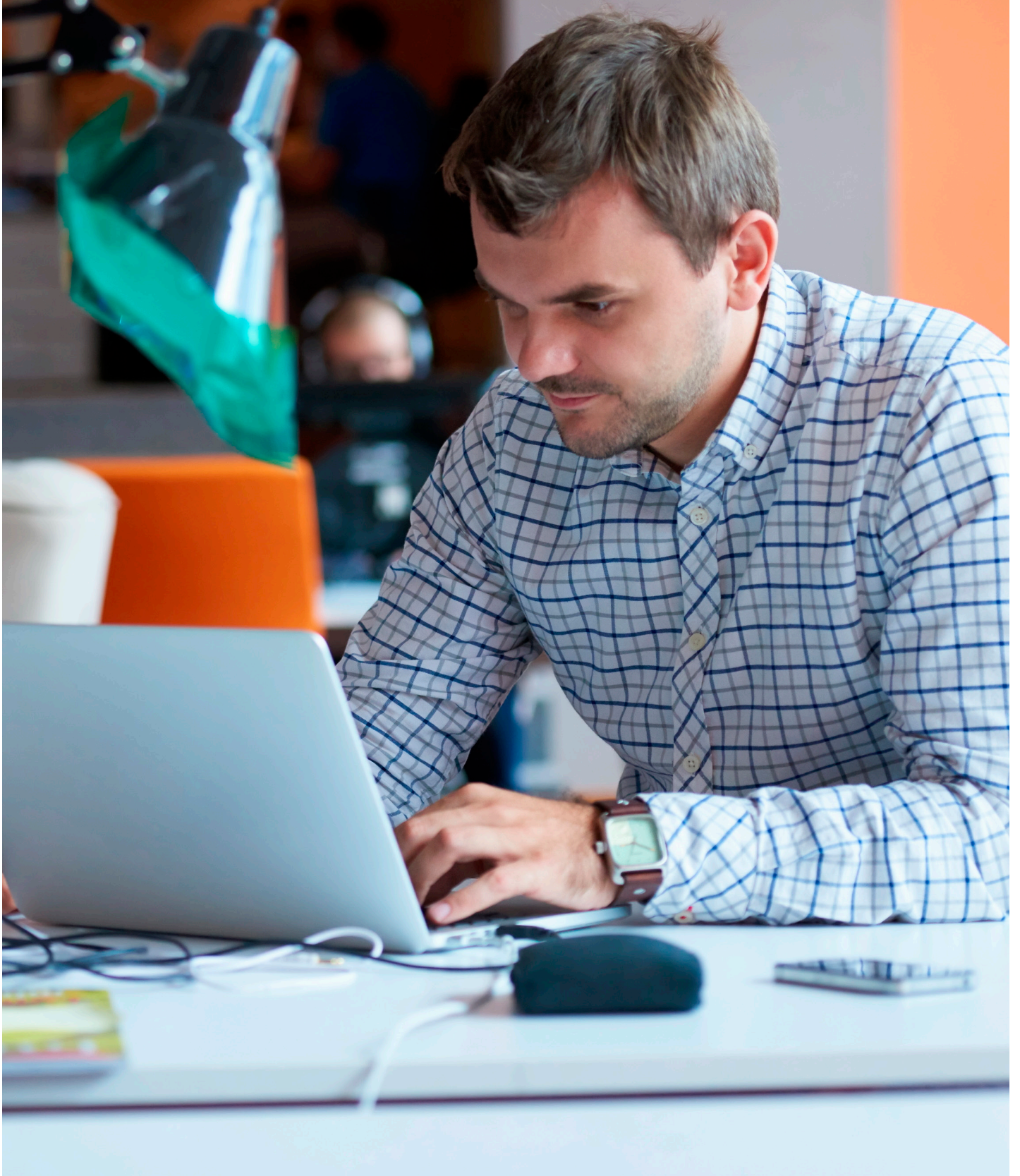


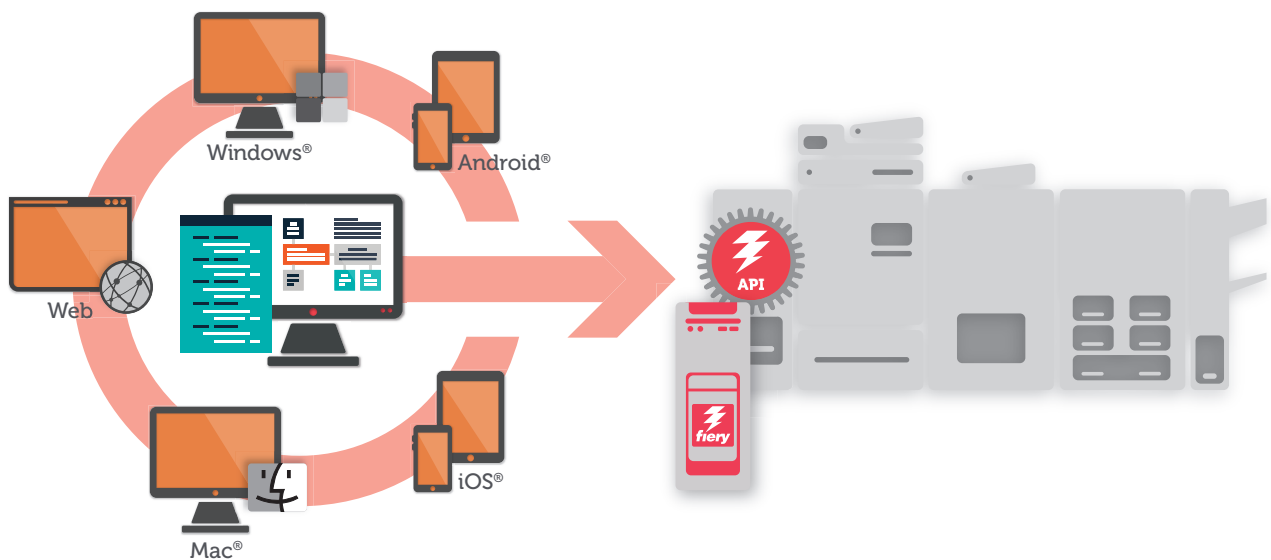
Build your solution just the  
way your business needs it.



## Fiery API opens the door to new, custom applications for digital print management

Fiery® API (application programming interface) allows you to easily interact with your Fiery servers from your own applications. Rapidly develop unique apps for a Web browser, Windows®, Mac®, Linux®, iOS®, Android®, and other platforms using familiar programming languages and development tools of your choice. Built on modern Web-based technologies such as WebSocket, Fiery API enables live, bidirectional interaction, and adheres to the popular REST (Representational State Transfer) architectural style, allowing developers to conduct API calls with simple HTTP methods.

- Retrieve job log data from Fiery server for cost accounting and supply tracking, with just a single line of code.
- Control job actions including process, print, and delete for a specific job or all jobs on your Fiery servers.
- Submit jobs to your Fiery servers from your apps with a simple command.
- Retrieve the current status of printer consumables and job progress to build your own real-time printer reports.
- Access preview images of a processed job to run basic proofing from your custom apps and tools.



## Fiery API feature highlights

### SERVER LOGIN, ADMINISTRATION, AND STATUS

FEATURE	API CALLS	DESCRIPTION
Login or logout	POST login or logout	A POST request that establishes or terminates secure, authorised user access to the Fiery API features from your application with a Fiery API access key.
Info	GET info	A GET request to list a Fiery server's basic information such as hardware info, serial number, language settings, and time zone.
Consumables	GET consumables	A GET request to report information about the tray and supply of paper and toner on the print engine.
Server	POST server	A POST request for actions on the Fiery server such as start or stop server, restart or reboot server, and cancel RIPPING or printing.
Devices	GET devices	A GET request to retrieve information about the connected printer and current job progress on printing or RIPPING.
Print system pages	POST printpages	A POST request to print system pages such as the system configuration page, PostScript® or PCL test page, and font list.

### JOB AND QUEUE MANAGEMENT

Jobs	GET jobs	A GET request to list all jobs presently in the job list on the Fiery server, including printed jobs. <ul style="list-style-type: none"><li>• Specify job attributes to be shown for each job</li><li>• Filter jobs by username or job status such as held jobs, RIPPed jobs, or printed jobs</li></ul>
	GET jobs/ID	A GET request to retrieve job info with a specific job ID.
Job preview	GET preview	A GET request to retrieve preview images of the job. <ul style="list-style-type: none"><li>• Specify job with job ID</li><li>• Specify page number of the job</li><li>• Specify the size of the preview image: thumbnail, screen size, or full size</li></ul>
Job submission	POST jobs	A POST request to submit job with a file, a Fiery Preset or Virtual Printer setting, and basic job attributes.
Job actions	PUT jobs/ID/method	A PUT request to perform job actions for existing jobs in a queue with a specific job ID. Available actions include: <ul style="list-style-type: none"><li>• Print, print and hold, rush print</li><li>• RIP (process job), re-RIP</li><li>• Cancel, remove raster data</li></ul>
Job reorder	PUT jobs/ID/move	A PUT request to reorder a specific job to be a first or last in a queue, or put in before or after a referenced job.
List queues	GET queues	A GET request to list the printer queues (logical printers) including Fiery Virtual Printers configured on the Fiery server.
Create queues	POST queues	A POST request to create a new printer queue (logical printers) with a name, print action, and basic job attributes.

### COST ACCOUNTING AND JOB LOG

Cost	GET cost	A GET request to retrieve Fiery job logs containing selected accounting information such as number of sheets used, media size, and media type for each printed job.
	GET cost/ID	A GET request to list selected accounting information with a specific job ID.

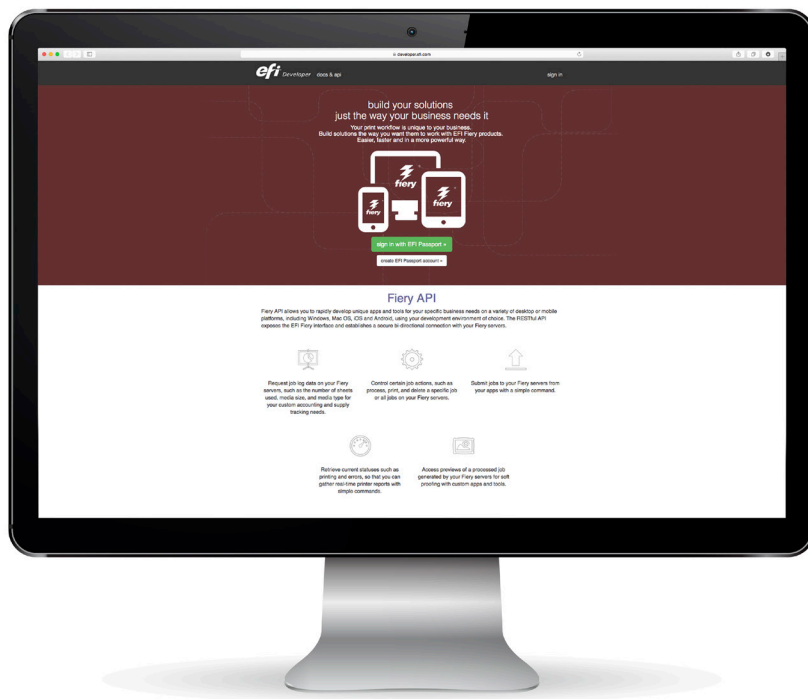
### HARDWARE AND SOFTWARE REQUIREMENTS AND COMPATIBILITY

EFI™ Fiery digital print servers	<ul style="list-style-type: none"><li>• Fiery System 9R2 or higher</li><li>• Command WorkStation® 5.4 and Fiery Extended Application Package 4.3 or higher installed</li></ul>
----------------------------------	--

“Fiery API is a thing of beauty. Using it, we had a demonstration app up and running within a couple of days. Now the orders are submitted to the Fiery print queue in a 100% automatic process. We went from 11 processes steps to one.”

PATRIC FARRY  
APPLICATION ARCHITECT  
ENDICIA

Sign up now



Fiery API is free to use within your own print shop. To learn more about Fiery API and full licensing terms, visit [developer.efi.com](http://developer.efi.com). Start your development right away with a free evaluation key, documentation, sample codes, and more!

## EFI fuels success.

We develop breakthrough technologies for the manufacturing of signage, packaging, textiles, ceramic tiles, and personalised documents, with a wide range of printers, inks, digital front ends, and a comprehensive business and production workflow suite that transforms and streamlines the entire production process, increasing your competitiveness and boosting productivity. Visit [www.efi.com](http://www.efi.com) or call 0808 101 3484 (UK only) or +44 (0)1246 298000 for more information.



Nothing herein should be construed as a warranty in addition to the express warranty statement provided with EFI products and services.

The APPS logo, AutoCal, Auto-Count, Balance, Best, the Best logo, BESTColor, BioVu, BioWare, ColorPASS, Colorproof, ColorWise, Command WorkStation, CopyNet, Cretachrom, Cretaprint, the Cretaprint logo, Cretaprinter, Cretaroller, DockNet, Digital StoreFront, DirectSmile, DocBuilder, DocBuilder Pro, DocStream, DSFdesign Studio, Dynamic Wedge, EDOX, EFI, the EFI logo, Electronics For Imaging, Entrac, EPCount, EPPhoto, EPRegister, EPStatus, Estimate, ExpressPay, Fabrivu, Fast-4, Fiery, the Fiery logo, Fiery Driven, the Fiery Driven logo, Fiery JobFlow, Fiery JobMaster, Fiery Link, Fiery Prints, the Fiery Prints logo, Fiery Spark, FreeForm, Hagen, Inkintensity, Inkware, Jettrion, the Jettrion logo, LapNet, Logic, MiniNet, Monarch, MicroPress, OneFlow, Pace, PhotoXposure, Printcafe, PressVu, PrinterSite, PrintFlow, PrintMe, the PrintMe logo, PrintSmith, PrintSmith Site, PrintStream, Print to Win, Prograph, PSI, PSI Flexo, Radius, Rastek, the Rastek logo, Remoteproof, RIPchips, RIP-While-Print, Screenproof, SendMe, Sincolor, Splash, Spot-On, TrackNet, UltraPress, UltraTex, UltraVu, UV Series 50, VisualCal, VUTEK, the VUTEK logo, and WebTools are trademarks of Electronics For Imaging, Inc. and/or its wholly owned subsidiaries in the U.S. and/or certain other countries.