

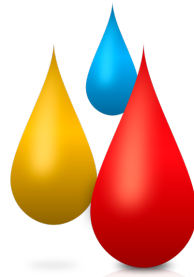
Fiery® Color Profiler Suite v4.9

G7 calibration and verification



New features in version 4.9

- Fiery Color Profiler Suite G7 calibration
 - Calibration
 - Verification
 - Optimization (optional)
- Multichannel profiling and calibration for next generation high-speed inkjet presses
- Mac OS support for Konica Minolta FD-9
- ISO 12647-7:2016 support



Fiery G7 calibration – IDEAlliance System Certification

- IDEAlliance awarded Color Profiler Suite 4.9 a [G7 System Certification](#) in May 2016 to be used with a Fiery Driven™ digital print system

See [Application Datasheet](#)



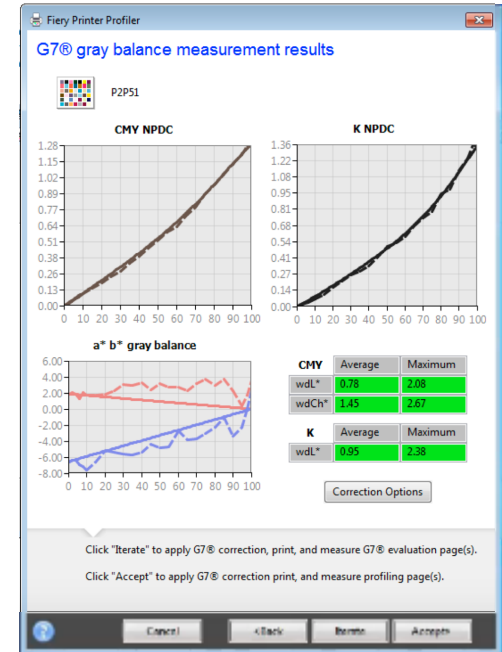
Fieri G7 calibration

- First and only DFE-integrated G7 calibration, profiling, and re-calibration solution for digital presses
 - Operators of any skill level can calibrate Fieri Driven print systems to G7
 - Calculates the G7 correction curves and writes them directly into a calibration set on the Fieri server



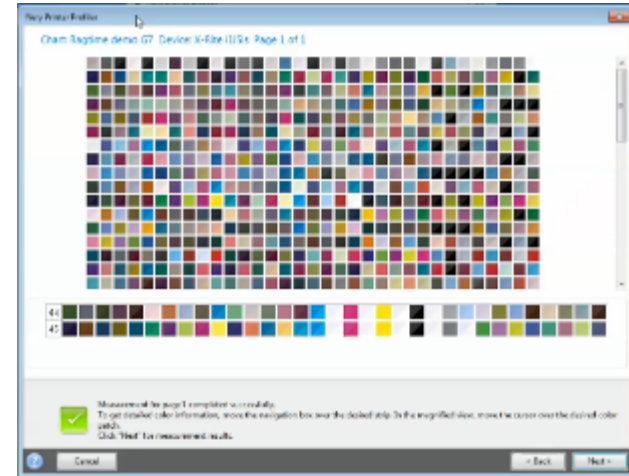
G7 verification and optimization

- Validates results against G7 grayscale specification
 - Confirms G7 grayscale compliance has been achieved
 - If G7 compliance is not achieved on the first try, calibration can be optimized by printing and measuring additional P2P color targets



Profile creation

- The workflow includes creation of a printer profile for use with the G7 calibration
 - To achieve higher levels of G7 compliance such as G7 Targeted and G7 Color space



Achieving highest level of G7 compliance



Three levels of G7 compliance:

- **G7 Grayscale**
 - A printing process calibrated to the G7 definitions of constant neutral Grayscale appearance as defined in ANSI/CGATS TR015
- **G7 Targeted**
 - A printing process is in ‘G7 Targeted’ compliance when it is G7 Grayscale calibrated and matches the color appearance of primaries and overprints described in ISO 12647-2
- **G7 Color space**
 - A printing process is in ‘G7 Color space’ compliance when it meets ‘G7 Targeted’ requirements and achieves colorimetric appearance matching based on IT8.7/4 test chart to an industry press reference such as GRACoL

Benefits of Fiery G7 Implementation

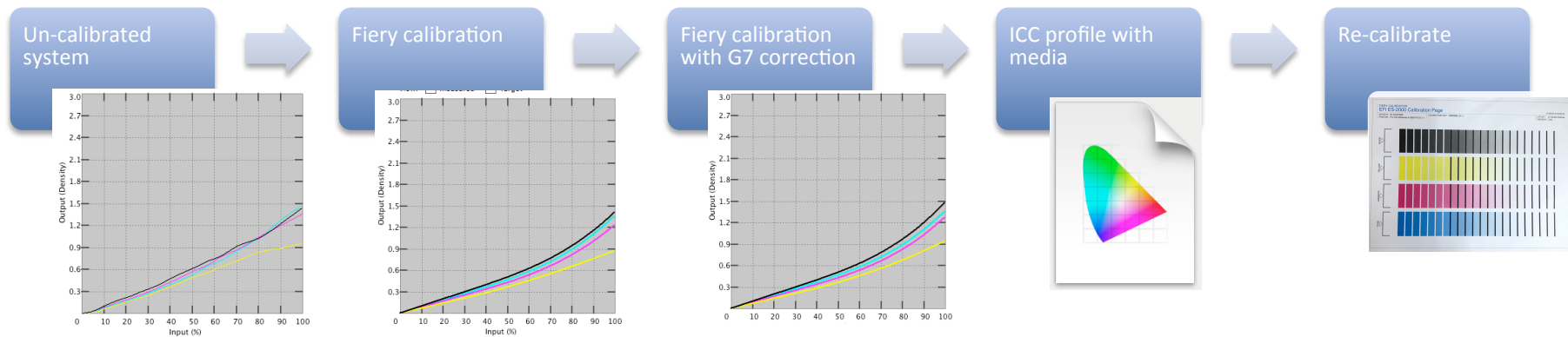


- Makes re-calibration twice as fast
 - Re-calibration from Command WorkStation using standard procedure
- Eliminates time-intensive and error prone manual loading/entry of correction curves or values
- Because it includes creating an output profile, the Fiery method results in not only correct tonality and gray balance, but also higher quality saturated colors
- Gives easy, visual verification of G7 grayscale compliance

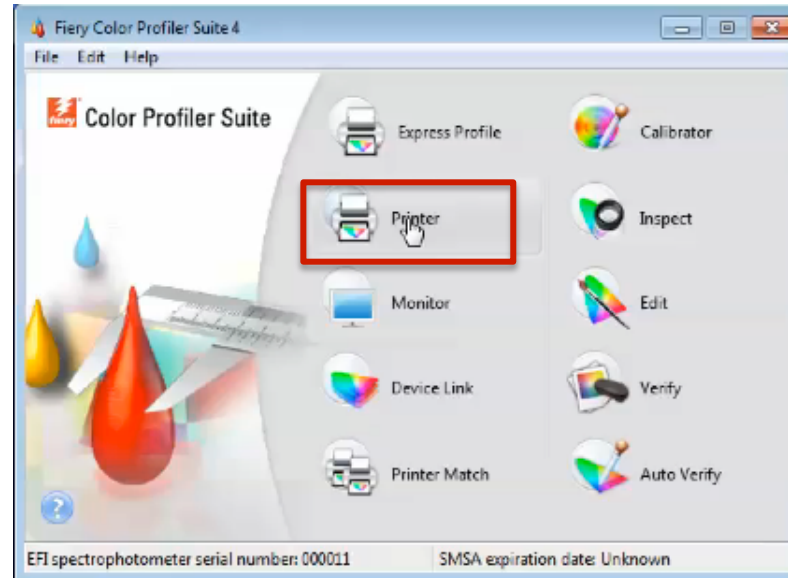
Fiery G7 calibration demo



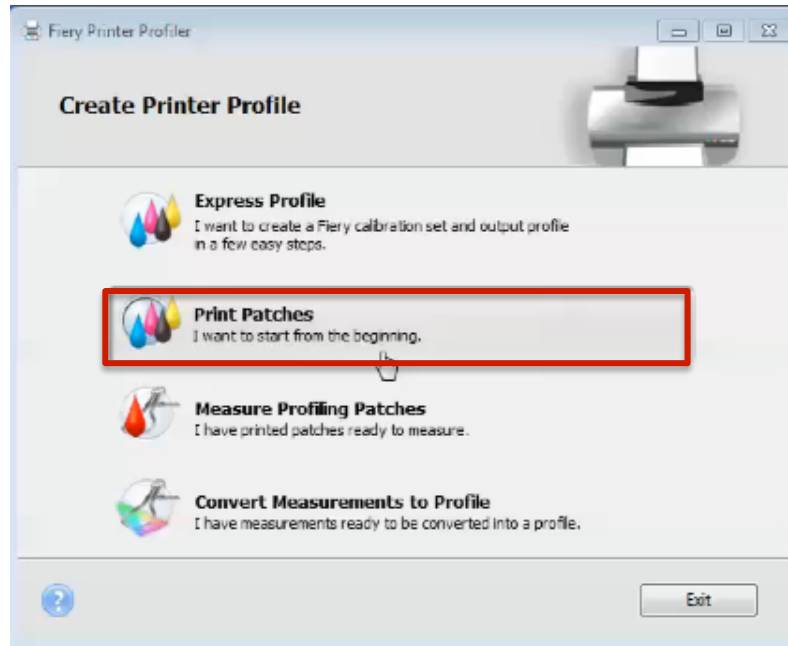
Fiery G7 calibration workflow



Color Profiler Suite G7 calibration – Printer Profiler

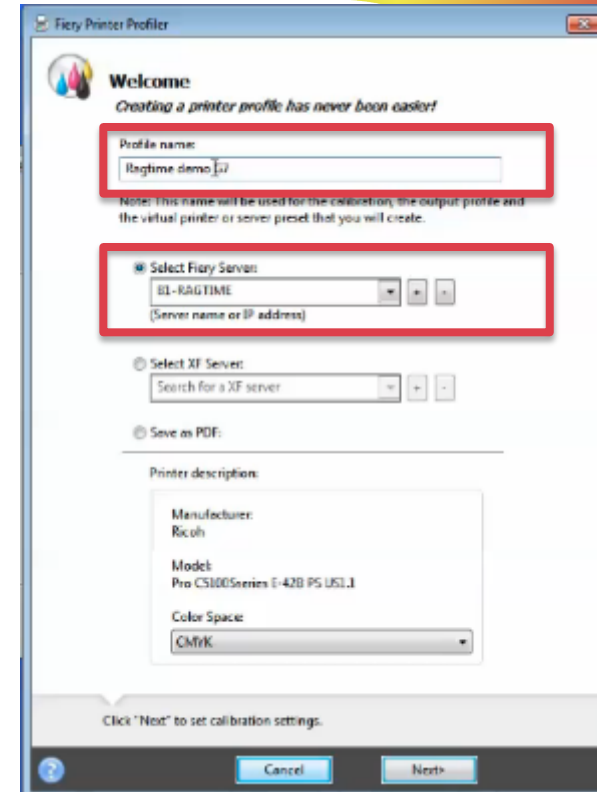


Color Profiler Suite G7 calibration – Print Patches



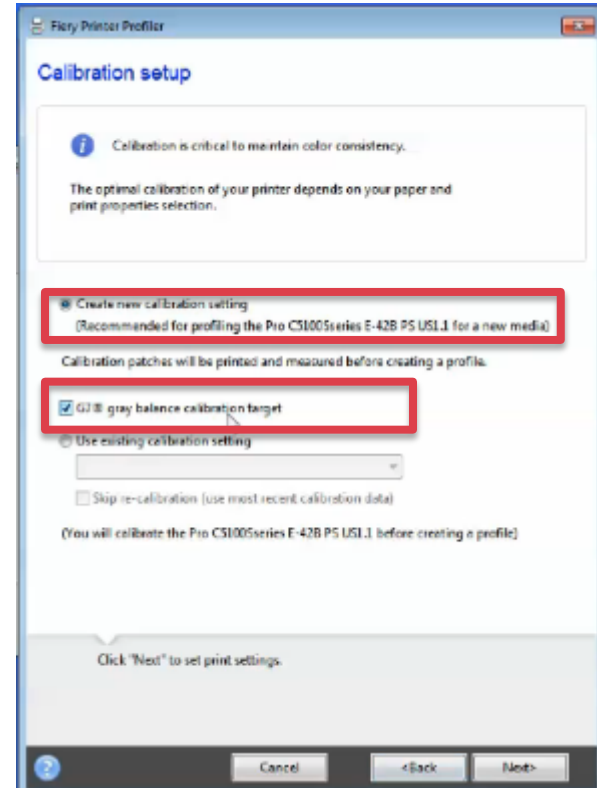
Color Profiler Suite G7 calibration – Choose Fiery server

- Name session
- Select Fiery server



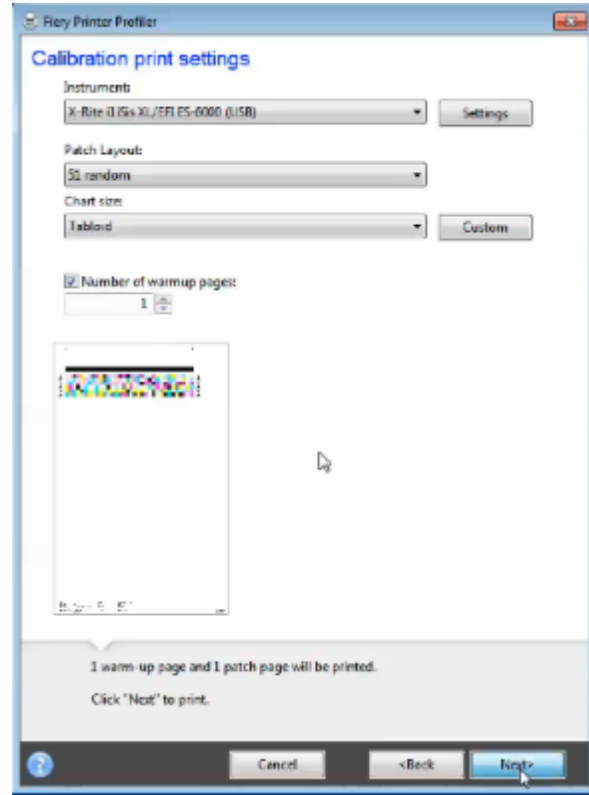
Color Profiler Suite G7 calibration – Select new G7 calibration

- In Calibration setup
 - Click create new calibration setting
 - Select G7 gray balance

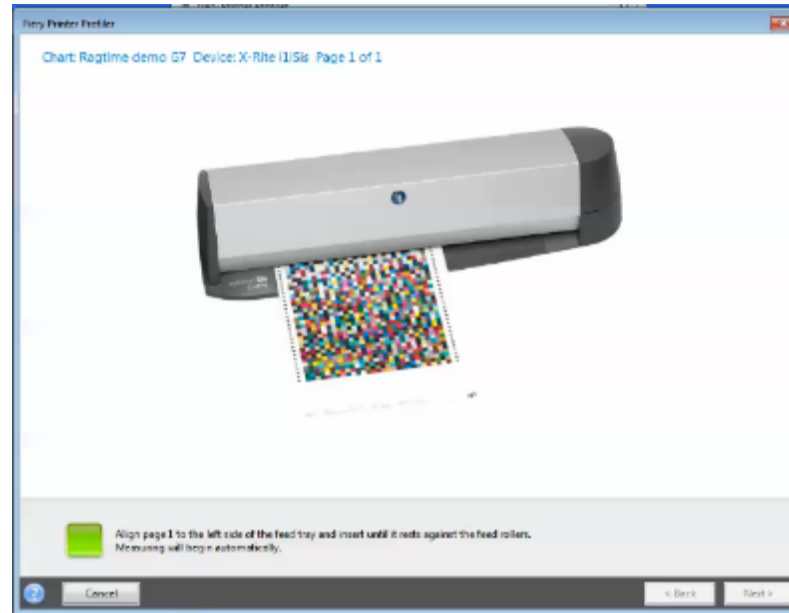


Color Profiler Suite G7 calibration – Print Fiery calibration chart

- Select:
 - Measuring device
 - 51 Random patch layout
 - Paper size
 - Number of warmup pages (5 recommended)

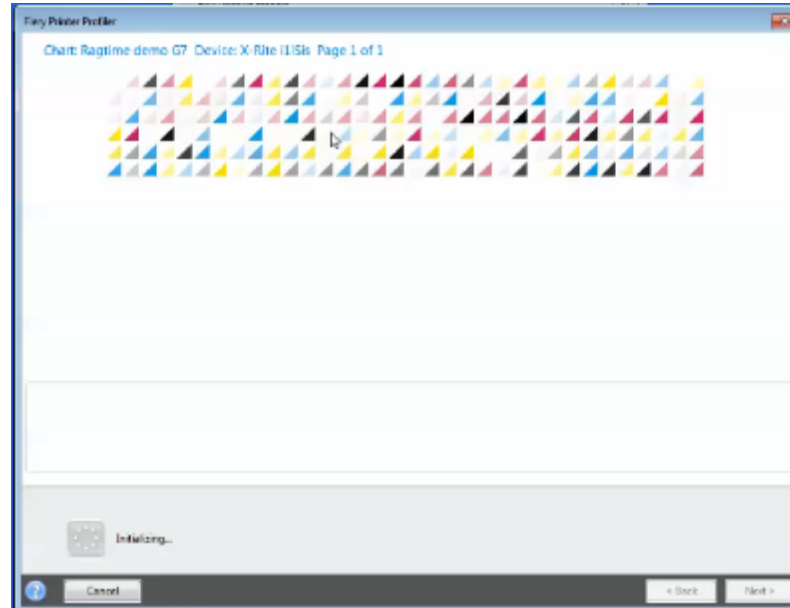


Color Profiler Suite G7 calibration – Measure Fiery calibration chart

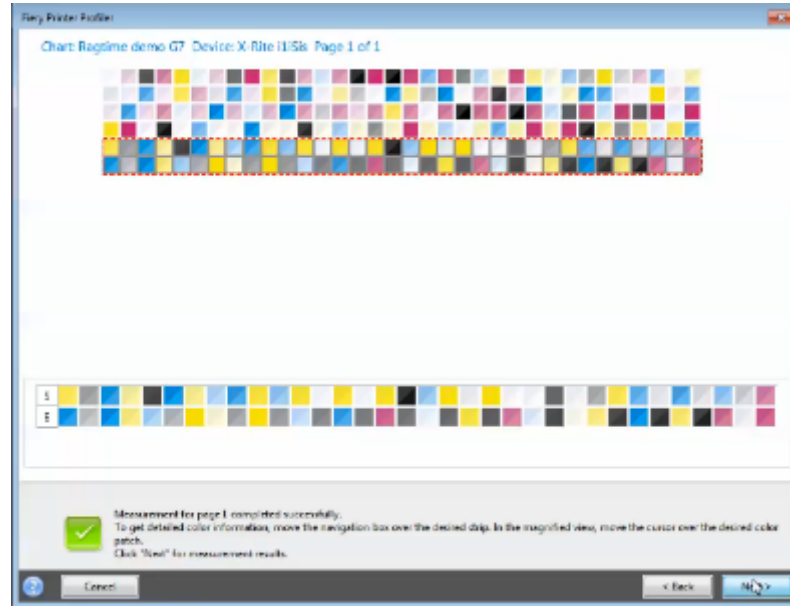


EFI ES-6000 spectrophotometer shown measuring patches

Color Profiler Suite G7 calibration – Measure Fiery calibration chart

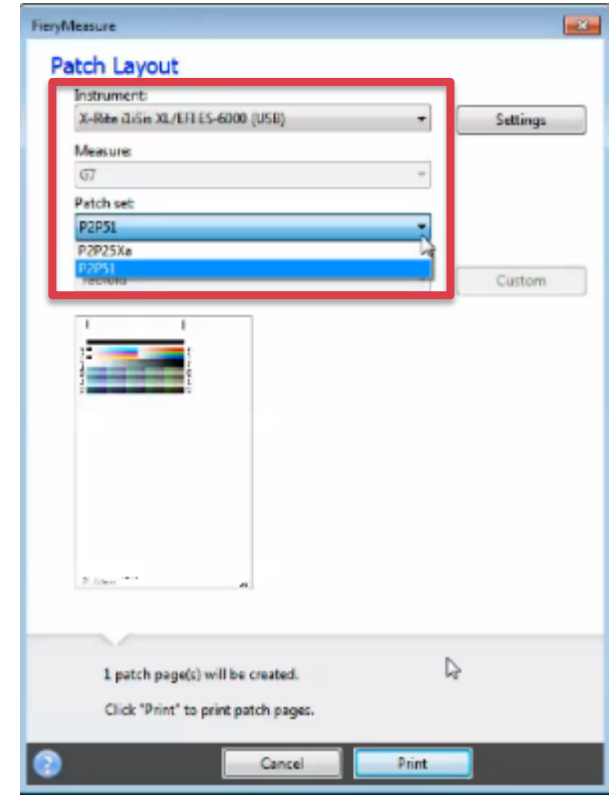


Color Profiler Suite G7 calibration – Measure Fiery calibration chart

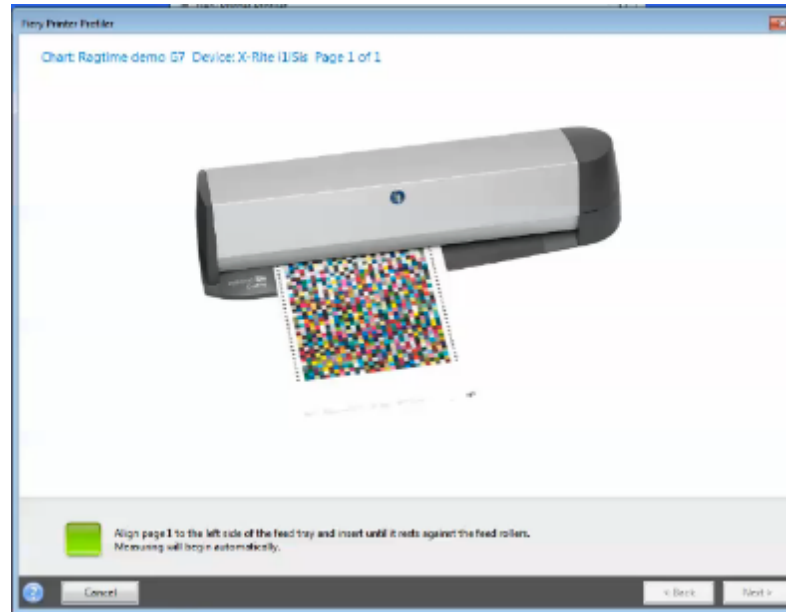


Color Profiler Suite G7 calibration – Print P2P with Fiery calibration only

- Next, select settings to print and measure P2P for G7 calibration

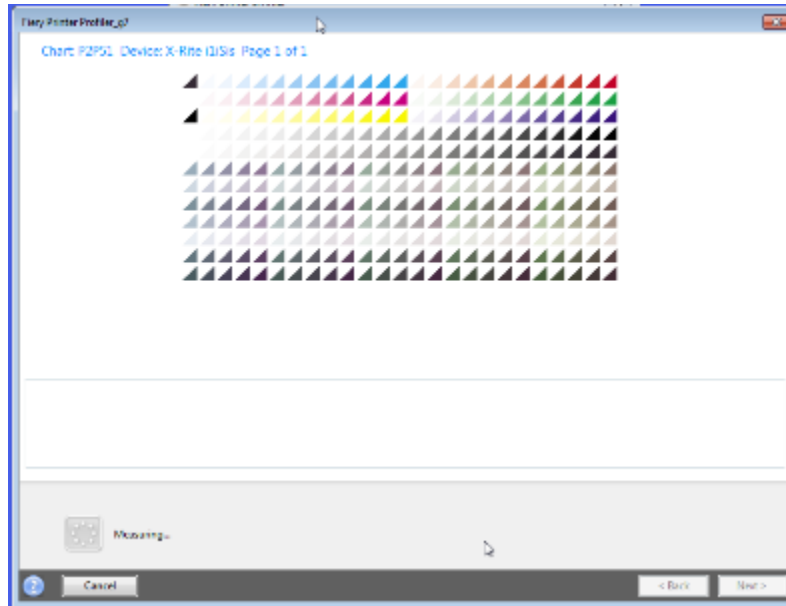


Color Profiler Suite G7 calibration – Measure P2P with Fiery calibration only

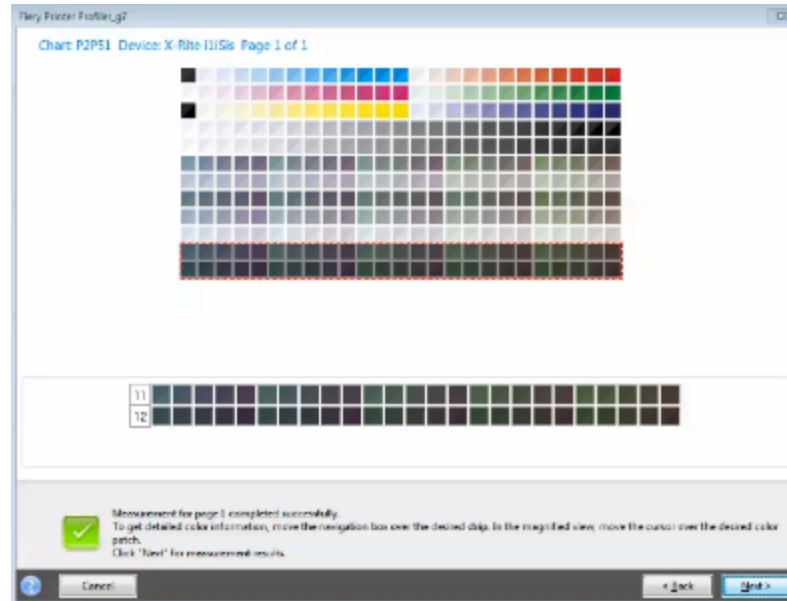


EFI ES-6000 spectrophotometer shown measuring patches

Color Profiler Suite G7 calibration – Measure P2P with Fiery calibration only

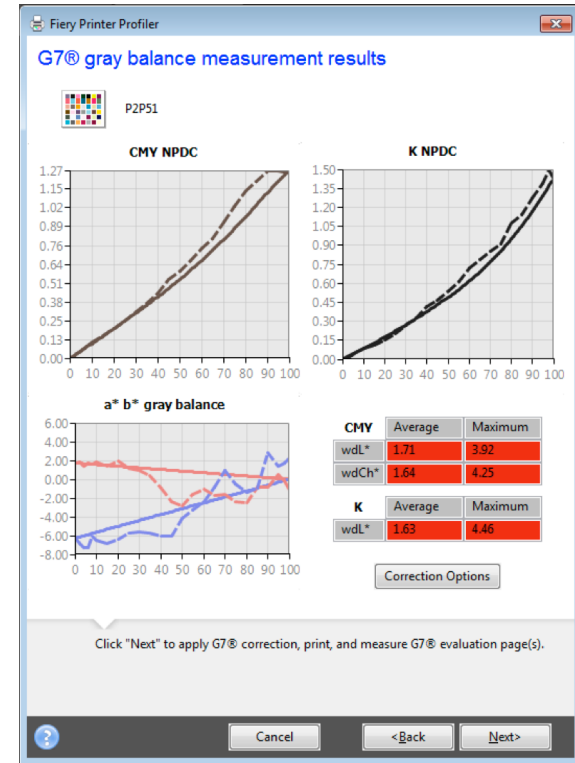


Color Profiler Suite G7 calibration – Measure P2P with Fiery calibration only

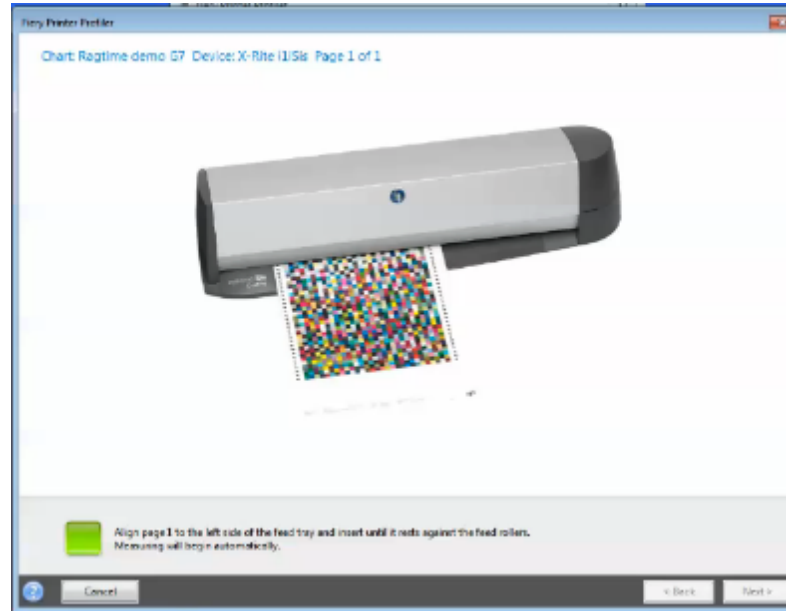


Color Profiler Suite G7 calibration – Fiery calibration only results

- Compliance failures shown in red
 - Failure expected: only Fiery calibration is currently loaded
- Click next to calculate and verify G7 calibration

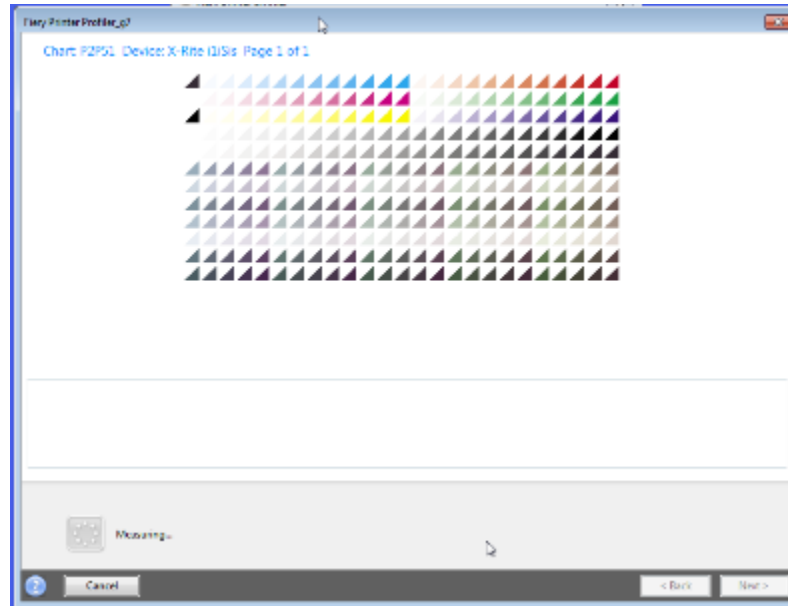


Color Profiler Suite G7 calibration – Measure P2P with G7 calibration

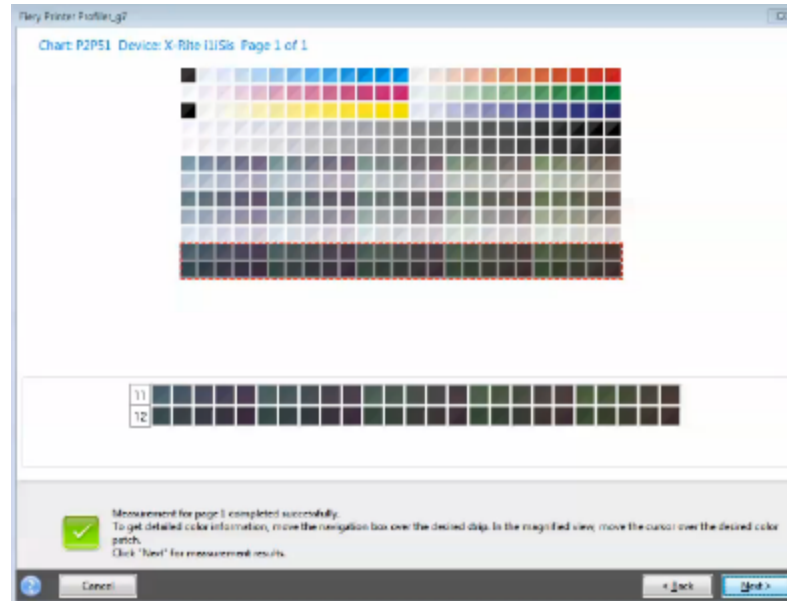


EFI ES-6000 spectrophotometer shown measuring patches

Color Profiler Suite G7 calibration – Measure P2P with G7 calibration

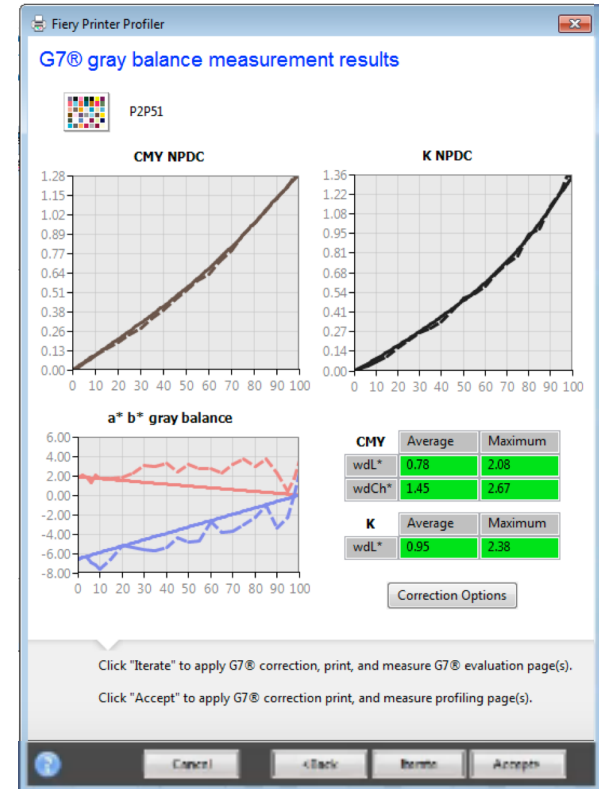


Color Profiler Suite G7 calibration – Measure P2P with G7 calibration

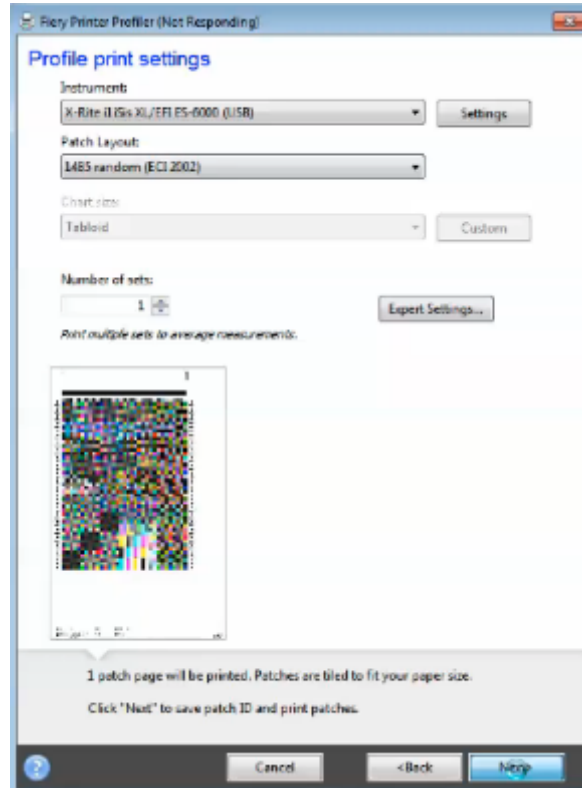


Color Profiler Suite G7 calibration – Verify G7 calibration

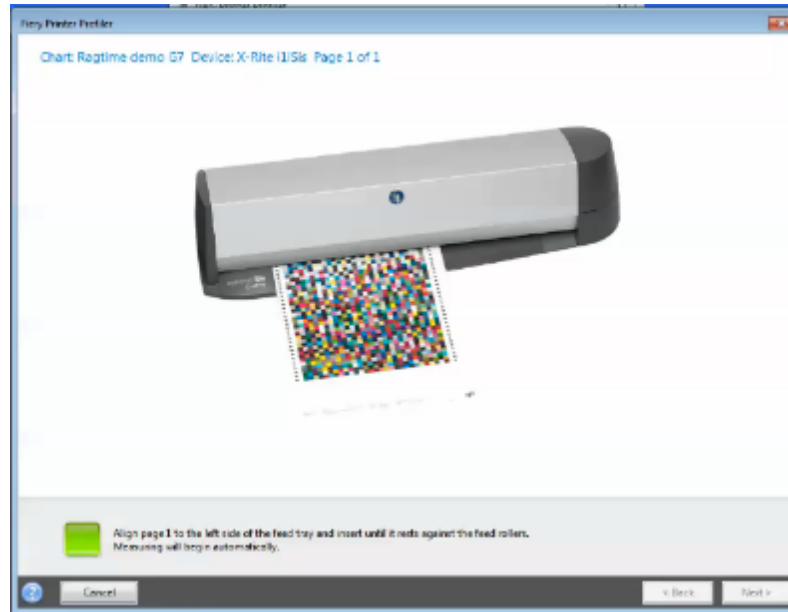
- G7 calibrated results displayed
 - If not passing, click Iterate to optimize G7 calibration
- This result is achieved by combining G7 calibration with the initial Fiery calibration so that Fiery re-calibration maintains G7 compliance



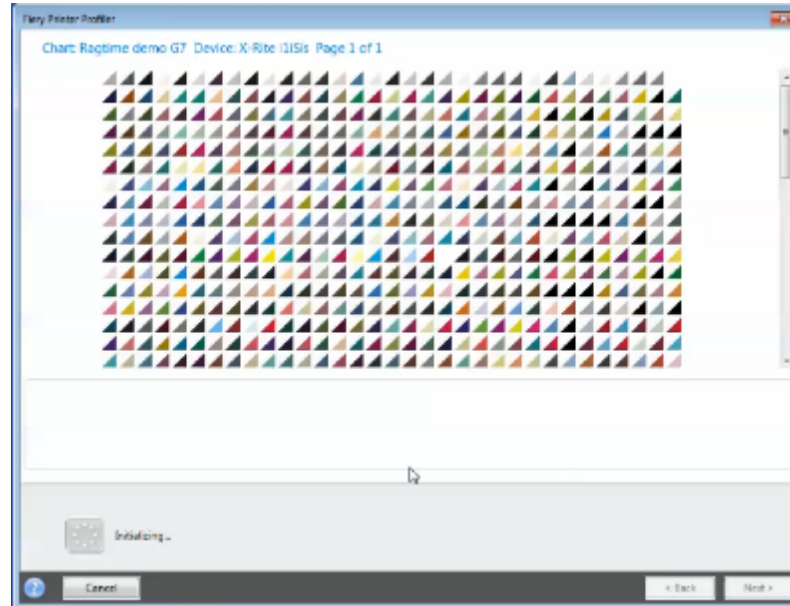
Color Profiler Suite G7 calibration – Create Printer Profile



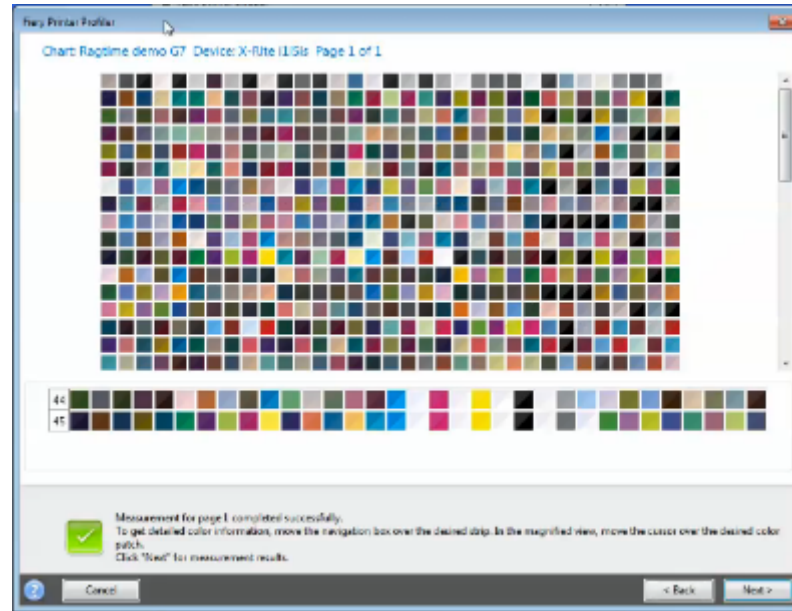
Color Profiler Suite G7 calibration – Measure profiling chart



Color Profiler Suite G7 calibration – Measure profiling chart

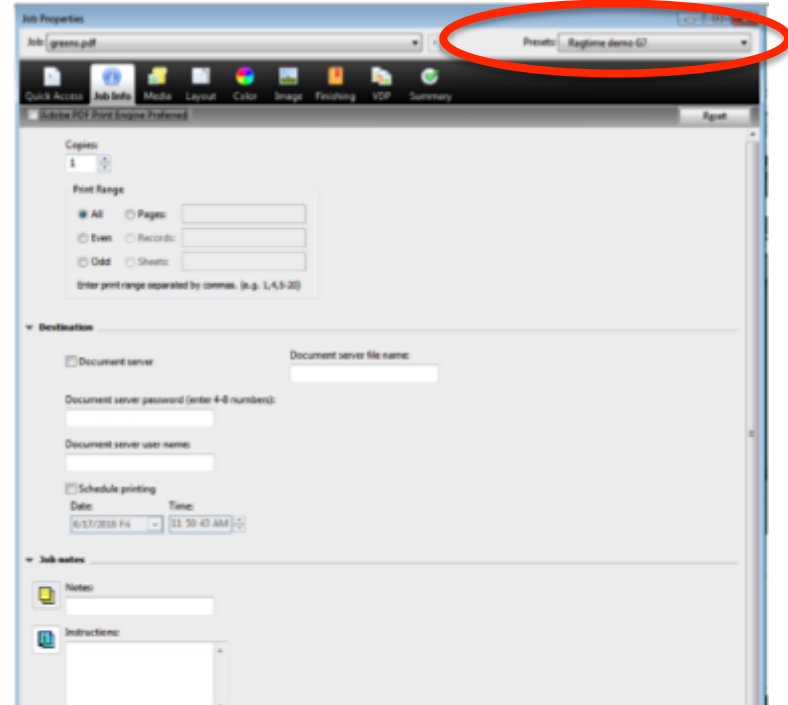


Color Profiler Suite G7 calibration – Measure profiling chart

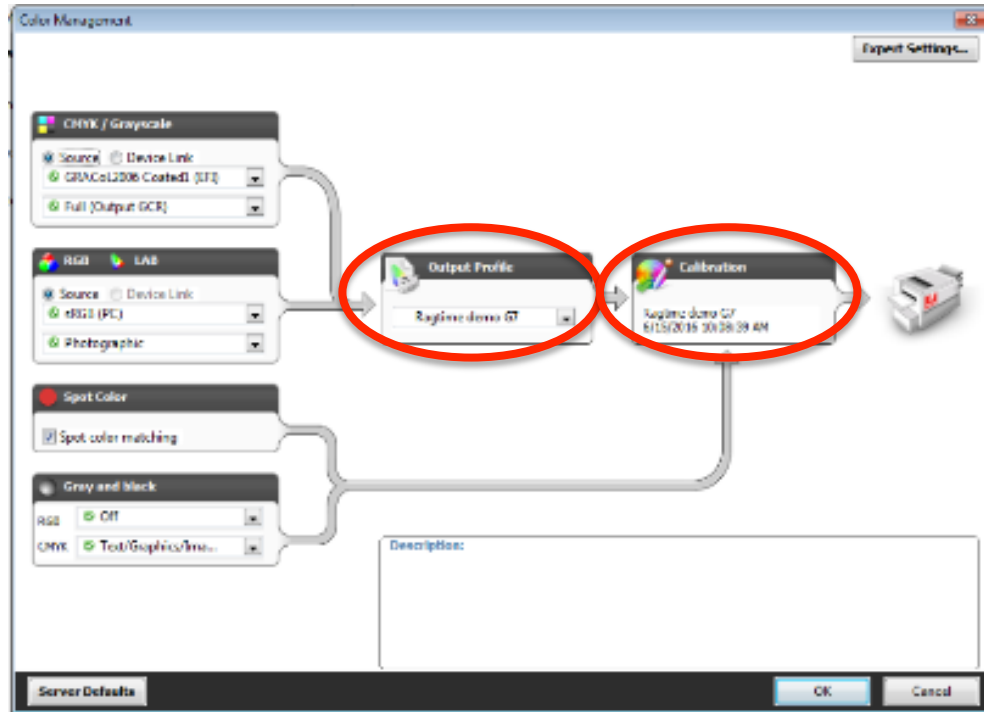


Color Profiler Suite G7 calibration – Using the preset

- G7 calibration and new printer profile are ready to be applied to print jobs
- Access new calibration and profile via server preset in Fiery Command WorkStation



Color Profiler Suite G7 calibration – Color settings from preset



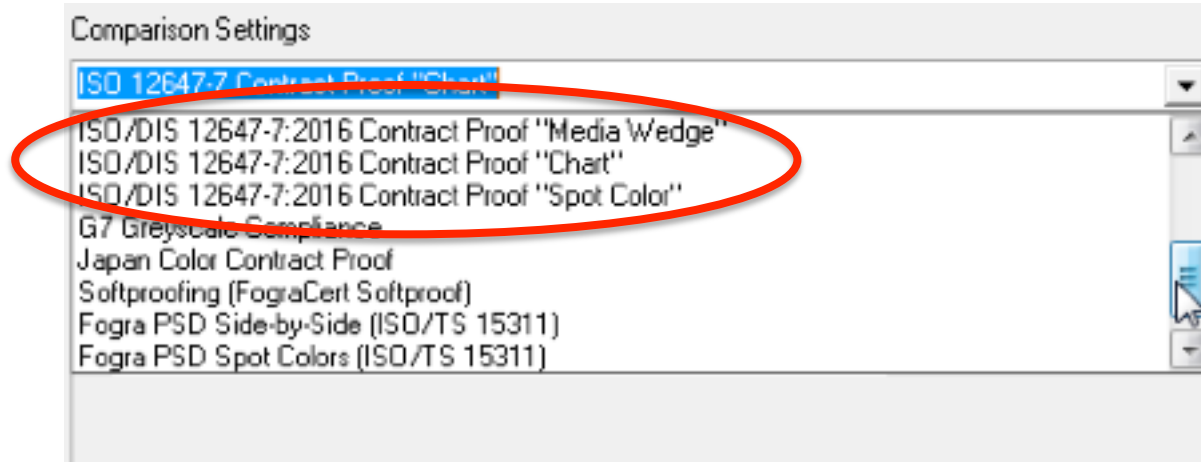
Konica Minolta FD-9 Mac support

- Mac OS support for Konica Minolta FD-9 spectrophotometer in all Color Profiler Suite modules



ISO 12647-7:2016 support

- Support for the newest ISO proof verification tolerances



Additional resources

- For more information visit: efi.com/cps
 - [Download](#) the latest version
 - Sign-up for a free 30-day trial
 - Access to the [latest features](#)
 - Access to brochures, training and technical [resources](#)
 - Download [How-to](#) guides
 - Access to technical support and [user forums](#)



Additional resources

- Watch World of Fiery education webinars on color
 - [3 Key Steps to Getting the Right Color](#)
 - [ABC's of Producing the Best Match for Spot Colors](#)
 - [Best Practices for Matching Industry Color Standards](#)
 - [Achieving Great Output Quality with your Paper](#)
 - [Best Practices for Producing Outstanding Image Quality Results](#)
- [Register for future](#) World of Fiery webinar series



